

F

Information for Local Government Comprehensive Plans

The SFWMD prepares water supply plans for each of its four planning areas to effectively support planning initiatives and address local issues. The regional water supply plans encompass a 20-year future planning horizon and are updated every five years. All local governments are required by statute to update their water supply facilities work plan, and adopt revisions to their comprehensive plan, within 18 months following the approval of this plan update.

This appendix contains water supply planning information useful to local governments for preparing and amending comprehensive plans. In addition to this appendix, the following chapters and appendices are particularly relevant for local governments:

Water Sources	Chapters 4 and 6; Appendix G
Utility Service Areas (2010 and 2030)	Chapter 6; Appendices D and F
Population Projections (2010–2030)	Chapter 2; Appendix A
Demand Projections (2010–2030)	Chapter 2; Appendix A
Water Supply Projects (2005–2030)	Chapter 6; Appendix G

This appendix includes the following information useful for the review and revision of local government comprehensive plans:

1. The SFWMD Checklist of Needed Comprehensive Plan Data
2. Relevant portions of cited statutory provisions
3. Tables identifying which utilities serve each LEC Planning Area jurisdiction
4. Maps of utility areas currently served (2010) and future utility service areas expected to be served (2030)

1. CHECKLIST OF NEEDED COMPREHENSIVE PLAN DATA

Local governments are required to plan for their water and wastewater needs along with other infrastructure and public service elements in their comprehensive plan. This section provides a general checklist of the type of data and information the SFWMD water supply planning staff look for during their review of the water supply element, policies, and other topics in local government comprehensive plans. This checklist is not all inclusive, but provides a broad, general framework for use with the more detailed Florida Department of Economic Opportunity related guidelines and SFWMD comments on specific water supply topics.

Checklist guidance is given for three water supply-related aspects of comprehensive plans:

- A. Work plans and other potable water sub-element revisions
- B. Evaluation and appraisal of comprehensive plan requirements
- C. Plan amendments (future land use change)

A. Work Plan and Other Potable Water Sub-Element Revisions *(To be completed within 18 months following final publication of this plan update)*

Overall Guidance

For consistency in the water supply planning process, the SFWMD, local governments, and utilities work closely with the Florida Department of Economic Opportunity projecting demands and proposing water supply projects for the future. This plan update provides water demand estimates, water source options, and water supply development projects to ensure adequate water supplies to support the region. Local governments should demonstrate consistency with the regional water supply plan and updates when developing or updating their work plans. The following guidance is provided to local governments for updating their work plans.

Review This Plan Update and Confirm Major PWS Entities Providing Service within Local Government's Jurisdiction

To be consistent with the regional water supply plan and updates, the local government's work plan should be in agreement with the major PWS entities serving most of the urban population. This plan update identifies PWS entities with projected average pumpage greater than 0.1 MGD serving most of the urban population. Smaller communities or municipalities may not be identified. The Florida Department of Economic Opportunity guidance for work plans recommends including all small community systems and DSS users on private wells. Information on these small in-community systems and DSS can be found on the FDEP website at <http://www.dep.state.fl.us/water/drinkingwater/flow.htm>.

This plan update provides information about PWS entities and urban water use by PWS service area. To be consistent with the regional water supply plan and updates, at a minimum, the work plan should identify the urban water demand and adequacy of PWS water sources within the municipal boundary to meet such water demand. If appropriate, the sale or purchase of water from PWS entities with service areas outside of the municipal boundary should also be identified. Municipal boundaries and land use are not primary determinants of water use.

Review PWS Utility Summaries Provided in Chapter 6 of This Plan Update

The SFWMD worked with the staff from PWS entities to identify water supply development projects for this plan update. Utility summaries were compiled using information from various sources, including input from PWS entities (utility summaries are provided in **Chapter 6**). The utility summaries provide baseline information about finished water demands, existing permitted sources and allocations, and recently constructed and proposed projects that create water capacity, as well as other related information. Multiple sources of water supply may be needed to accommodate projected water demand in future years. PWS entity staff should confirm the information provided in the utility summaries in this plan update. Subsequent to adoption of the plan update, PWS entities must respond within 12 months to the SFWMD with their intentions to develop and implement the projects identified by this plan update, or provide a list of other projects or methods to meet water demands.

To be consistent with the regional water supply plan, the local government's work plan should be in general agreement with this plan update's utility summaries' water sources and schedule of water sources to be made available to meet projected water demands. However, it is not necessary to use the same population projections or PCURs used by the regional water supply plan to project water demand. Generally accepted professional planning methods and more recent sources of data may be used as input to the local planning process. This may result in differences between the population and demand estimates provided in this plan update's utility summaries. In such cases, the work plan should identify and explain the basis for any differences.

Furthermore, consistency between a work plan and regional water supply plan does not require the same planning periods. The minimum planning period for regional water supply plans is 20 years (referred to as the 20-year planning horizon). However, a minimum 10-year planning period is required for local government work plans (Paragraph 163.3177(6)(c)3, F.S.) and a 20-year planning period is preferred.

Additional information about developing a work plan including guidelines is available on the Florida Department of Economic Opportunity website at the following link: <http://www.floridajobs.org/community-planning-and-development/programs/technical-assistance/planning-initiatives/natural-resource-planning/water-supply-planning>.

Checklist of Key Considerations

Water Supply Demand Projections

- Review this plan update and revise the local government's adopted work plan to be consistent with the water demand estimates and population projections cited in this plan update. The objective is to provide best available data. If the local government can provide data that improves data in this plan, then the local government data should be used in the work plan. All differences in water demand estimates and population projections used in the work plan should be identified and explained.
 - Plan for both gross (raw) and finished (i.e., water volume after any losses due to water treatment) water supply demands within the city or county jurisdiction for each supplier.
 - The projections should cover at least a 10-year planning period, but projections for the entire established local government comprehensive plan's planning period are preferred.
 - The projections should plan for the building of all public, private, and regional water supply facilities and bulk sales of water that will be necessary to provide water supply service within the local government's jurisdiction.

Water Source Identification

- Review the water supply sources identified by the local government or its water suppliers as necessary to meet and achieve the existing and projected water use demand for the established planning period.
 - Compare this information with the available sources in this plan update.
- Provide separate projections for existing and future DSS.
 - Identify the general areas served by DSS.

Water Supply Project Identification

- Either incorporate water supply project(s) selected by the local government's utility or utilities providing PWS to the local government, as identified in the regional water supply plan, or propose alternatives for inclusion in the work plan.
 - All other public and private water supply capital improvements, including wells, treatment plants, distribution systems, etc., necessary to maintain level-of-service standards within the jurisdiction should also be included in the work plan.
- Coordinate the work plan water supply projects with the SFWMD water supply plan update and the water supplier(s) annual progress reports.
 - Update the work plan accordingly.

- Identify sufficient water conservation, reclaimed water, and water supply projects necessary to meet projected demands.
- Update the capital improvements element as required.

Water Supply Intergovernmental Coordination

- The work plan should address ongoing and future coordination with existing and future water supply and reclaimed water providers for meeting future demands. This should occur before, during, and after the water supply plan update process.
- Review existing and future utility service areas for each provider within the jurisdiction. Refer to the maps provided in this appendix. Compare and update the work plan as needed.
 - Identify existing or potential service area conflicts and solutions. Include a conflict resolution policy.
 - Ensure all areas of the local government are accounted for by the local government's own utility or other providers.
- Review and update the work plan language concerning needed coordination with water supplier(s), other local governments and entities, and others.
 - Include updates to agreements (e.g., bulk service agreements and interconnect agreements).

Related Comprehensive Plan Amendments

- If additional revisions are needed for coordination with this water supply plan update, but are not listed here, incorporate changes into the comprehensive plan and work plan, as appropriate.
- This water supply plan update will require changes to the work plan and possibly other elements within the comprehensive plan. Revisions may include population projections, established planning period, existing and future water resource projects, intergovernmental coordination activities, conservation and reclaimed water measures, and the capital improvements element.
 - Review the comprehensive plan for consistency between all elements of the work plan and other comprehensive plan elements in consideration of all proposed modifications to the comprehensive plan. Other comprehensive plan elements include, but may not be limited to, future land use, potable water, sanitary sewer, conservation, intergovernmental coordination, and capital improvements.

B. Evaluation and Appraisal of Comprehensive Plans

Paragraphs 163.3191(1) – (3), F.S.

(Evaluation of the comprehensive plan after the adoption of a work plan)

Water Supply Project Identification and Selection

At least every seven years, local governments must evaluate whether the need exists to amend their comprehensive plan since the last comprehensive plan update. The evaluation should address changes in state requirements since the last update of the comprehensive plan.

While an evaluation and appraisal report is not required, local governments are encouraged to comprehensively evaluate, and as necessary, update comprehensive plans to reflect changes in local conditions. The evaluation could address the issues below related to their work plans.

- Identify the extent to which the local government has been successful in identifying water supply projects, including water conservation and reclaimed water, necessary to meet projected demands.
- Evaluate the degree to which the work plan has been implemented for building all public, private, and regional water supply facilities within the jurisdiction necessary to meet projected demands.
- Include recommendations for revising the work plan and the applicable comprehensive plan elements to address the conclusions of the evaluation, as necessary.

C. Plan Amendments (Future Land Use Change)

Water Supply Demand Projections

- Address both gross (raw) and finished (i.e., after any losses due to water treatment) water supply needs for both potable and nonpotable (i.e., irrigation) demands, using professionally acceptable methodologies for population projections and PCURs.
- Address existing and future water conservation and reclaimed water commitments, and levels of service (i.e., PCURs), for both the proposed future land use change and the comprehensive plan.
- Address both the build-out timeframe for a proposed future land use change, and the established planning timeframe for the comprehensive plan.

Water Source Identification

- For existing demands, reflect water source(s) from supplier's CUP.
- For future demands covered by a supplier's commitment to provide service under remaining available capacity of an existing CUP, reflect the source(s) from the supplier's CUP, including bulk supply contracted quantities, duration, and provider.

- For future demands not covered by an existing CUP, provide sufficient planning-level data and analysis to demonstrate the availability of a sustainable water source as identified in this plan update.

Availability of Water Supply and Public Facilities

- Demonstrate an availability of gross (raw) water supply from the proposed source(s) of gross (raw) supply for the future land use change, given all other approved land use commitments within the local government's jurisdiction over both the proposed amendment's build-out and the established planning period of the comprehensive plan (see Paragraphs 163.3167(9) and 163.3177(6)(a), F.S.).
- Demonstrate an availability of both treatment facility capacity and permitted, available, finished water supply for the future land use change, given all other commitments for that capacity and supply over the proposed build-out time frame.
- If the availability of either water supply and/or public facilities is not currently demonstrable, either phasing of the future land use (see Paragraph 163.3177(6)(h)1, F.S.), and/or appropriate amendments to the capital improvements element/potable water sub-element will be required, to ensure the necessary capital planning and timely availability of the needed infrastructure and water supply (see Paragraphs 163.3177(3)(a), 163.3177(6)(c), and 163.3177(6)(h)3.b., F.S.).
- If the water provider is an entity other than the local government responsible for the comprehensive plan amendment, demonstrate that coordination of the plan amendment has occurred between the water provider and the local government (see 163.3177(6)(h)3.b., F.S.).

Related Comprehensive Plan Amendments

- A future land use change may also require amendments to other specific elements within the comprehensive plan if it requires an adjustment to either the plan's future population or demand projections, the comprehensive plan's established planning period, the water supply sources, or water providers required to be addressed in the comprehensive plan (see Subsections 163.3167(9), 163.3177(4)(a), 163.3177(5)(a), 163.3177(6)(a), 163.3177(6)(c), and 163.3177(6)(d), F.S., and Section 163.3180, F.S.).

2. CITED FLORIDA STATUTE PROVISIONS (RELEVANT PORTIONS)

163.3167(9): Each local government shall address in its comprehensive plan, as enumerated in this chapter, the water supply sources necessary to meet and achieve the existing and projected water use demand for the established planning period, considering the applicable plan developed pursuant to s. 373.709.

163.3177(3)(a): The comprehensive plan shall contain a capital improvements element designed to consider the need for and the location of public facilities in order to encourage the efficient use of such facilities and set forth:

1. A component that outlines principles for construction, extension, or increase in capacity of public facilities, as well as a component that outlines principles for correcting existing public facility deficiencies, which are necessary to implement the comprehensive plan. The components shall cover at least a 5-year period.
2. Estimated public facility costs, including a delineation of when facilities will be needed, the general location of the facilities, and projected revenue sources to fund the facilities.
3. Standards to ensure the availability of public facilities and the adequacy of those facilities including acceptable levels of service.
4. A schedule of capital improvements which includes any publicly funded project of federal, state or local government, and which may include privately funded projects for which the local government has no fiscal responsibility. Projects necessary to ensure that any adopted level-of-service standards are achieved and maintained for the 5-year period must be identified as either funded or unfunded and given a level of priority for funding.

163.3177(4)(a): Coordination of the local comprehensive plan with the comprehensive plans of adjacent municipalities, the county, adjacent counties, or the region; with the appropriate water management district's regional water supply plans approved pursuant to s. 373.709; and with adopted rules pertaining to designated areas of critical state concern shall be a major objective of the local comprehensive planning process. To that end, in the preparation of a comprehensive plan or element thereof, and in the comprehensive plan or element as adopted, the governing body shall include a specific policy statement indicating the relationship of the proposed development of the area to the comprehensive plans of adjacent municipalities, the county, adjacent counties, or the region, as the case may require and as such adopted plans or plans in preparation may exist.

163.3177(5)(a): Each local government comprehensive plan must include at least two planning periods, one covering at least the first 5-year period occurring after the plan's adoption and one covering at least a 10-year period. Additional planning periods for specific components, elements, land use amendments, or projects shall be permissible and accepted as part of the planning process.

163.3177(6)(a): A future land use plan element designating proposed future general distribution, location, and extent of the uses of land for residential uses, commercial uses, industry, agriculture, recreation, conservation, education public facilities, and other categories of the public and private uses of land. The approximate acreage and the general range of density or intensity of use shall be provided for the gross land area included in each existing land use category. The element shall establish the long-term end toward which land use programs and activities are ultimately directed.

163.3177(6)(a)2.: The future land use plan and plan amendments shall be based upon surveys, studies, and data regarding the area, as applicable including:

- a. The amount of land required to accommodate anticipated growth.
- b. The projected permanent and seasonal population of the area.
- c. The character of undeveloped land.
- d. The availability of water supplies, public facilities, and services.
- e. The need for redevelopment, including the renewal of blighted areas and the elimination of nonconforming uses which are inconsistent with the character of the community.

163.3177(6)(c): A general sanitary sewer, solid waste, drainage, potable water, and natural groundwater aquifer recharge element correlated to principles and guidelines for future land use, indicating ways to provide for future potable water, drainage, sanitary sewer, solid waste, and aquifer recharge protection requirements for the area. The element may be a detailed engineering plan including a topographic map depicting areas of prime groundwater recharge.

1. Each local government shall address in the data and analyses required by this section those facilities that provide service within the local government's jurisdiction. Local governments that provide facilities to serve areas within other local government jurisdictions shall also address those facilities in the data and analyses required by this section, using data from the comprehensive plan for those areas for the purpose of projecting facility needs as required in this subsection. For shared facilities, each local government shall indicate the proportional capacity of the systems allocated to serve its jurisdiction.

2. The element shall describe the problems and needs and the general facilities that will be required for solution of the problems and needs including correcting existing facility deficiencies. The element shall address coordinating the extension of, or increase in the capacity of, facilities to meet future needs while maximizing the use of existing facilities and discouraging urban sprawl; conserving potable water resources; and protecting the functions of natural groundwater recharge areas and natural drainage features.
3. Within 18 months after the governing board approves an updated regional water supply plan, the element must incorporate the alternative water supply project or projects selected by the local government from those identified in the regional water supply plan pursuant to s. 373.709(2)(a) or proposed by the local government under s. 373.709(8)(b). If a local government is located within two water management districts, the local government shall adopt its comprehensive plan amendment within 18 months after the later updated regional water supply plan. The element must identify such alternative water supply projects and traditional water supply projects and conservation and reuse necessary to meet the water needs identified in s. 373.709(2)(a) within the local government's jurisdiction and include a work plan, covering at least a 10-year planning period, for building public, private, and regional water supply facilities, including development of alternative water supplies, which are identified in the element as necessary to serve existing and new development. The work plan shall be updated, at a minimum, every five years within 18 months after the governing board of a water management district approves an updated regional water supply plan. Local governments, public and private utilities, regional water supply authorities, special districts, and water management districts are encouraged to cooperatively plan for the development of multijurisdictional water supply facilities that are sufficient to meet projected demands for established planning periods, including the development of alternative water sources to supplement traditional sources of groundwater and surface water supplies.

163.3177(6)(d): A conservation element for the conservation, use, and protection of natural resources in the area, including air, water, water recharge areas, wetlands, waterwells, estuarine marshes, soils, beaches, shores, flood plains, rivers, bays, lakes, harbors, forests, fisheries and wildlife, marine habitat, minerals, and other natural and environmental resources, including factors that affect energy conservation.

1. The following natural resources, where present within the local government's boundaries, shall be identified and analyzed and existing recreational or conservation uses, known pollution problems, including hazardous wastes, and the potential for conservation, recreation, use, or protection shall also be identified:

- a. Rivers, bays, lakes, wetlands including estuarine marshes, groundwaters, and springs, including information on quality of the resource available.
 - b. Floodplains.
2. The element must contain principles, guidelines, and standards for conservation that provide long-term goals and which:
 - b. Conserves, appropriately uses, and protects the quality and quantity of current and projected water sources and waters that flow into estuarine waters or oceanic waters and protect from activities and land uses known to affect adversely the quality and quantity of identified water sources, including natural groundwater recharge areas, wellhead protection areas, and surface waters used as a source of public water supply.
 - c. Provides for the emergency conservation of water sources in accordance with the plans of the regional water management district.
 3. Current and projected needs and sources for at least a 10-year period based on the demands for industrial, agricultural, and potable water use and the quality and quantity of water available to meet these demands shall be analyzed. The analysis shall consider the existing levels of water conservation, use, and protection and applicable policies of the regional water management district and further must consider the appropriate regional water supply plan approved pursuant to s. 373.709, or, in the absence of an approved regional water supply plan, the district water management plan approved pursuant to s. 373.036(2). This information shall be submitted to the appropriate agencies...

163.3177(6)(h)1.: An intergovernmental coordination element showing relationships and stating principles and guidelines to be used in coordinating the adopted comprehensive plan with the plans of school boards, regional water supply authorities, and other units of local government providing services but not having regulatory authority over the use of land, with the comprehensive plans of adjacent municipalities, the county, adjacent counties, or the region, with the state comprehensive plan and with the applicable regional water supply plan approved pursuant to s. 373.709, as the case may require and as such adopted plans or plans in preparation may exist...

- a. The intergovernmental coordination element must provide procedures for identifying and implementing joint planning areas, especially for the purpose of annexation, municipal incorporation, and joint infrastructure service areas.

163.3177(6)(h)3.b.: Ensure coordination in establishing level of service standards for public facilities with any state, regional, or local entity having operational and maintenance responsibility for such facilities.

163.3180: Concurrency.—

163.3180(1)(a): Sanitary sewer, solid waste, drainage, and potable water are the only public facilities and services subject to the concurrency requirement on a statewide basis...

163.3180(1)(b): The local government comprehensive plan must demonstrate, for required or optional concurrency requirements, that the levels of service adopted can be reasonably met. Infrastructure needed to ensure that adopted level-of-service standards are achieved and maintained for the 5-year period of the capital improvement schedule must be identified pursuant to the requirements of s. 163.3177(3). The comprehensive plan must include principles, guidelines, standards, and strategies for the establishment of a concurrency management system.

163.3180(2): Consistent with public health and safety, sanitary sewer, solid waste, drainage, adequate water supplies, and potable water facilities shall be in place and available to serve new development no later than the issuance by the local government of a certificate of occupancy or its functional equivalent. Prior to approval of a building permit or its functional equivalent, the local government shall consult with the applicable water supplier to determine whether adequate water supplies to serve the new development will be available no later than the anticipated date of issuance by the local government of a certificate of occupancy or its functional equivalent...

163.3180(3): Governmental entities that are not responsible for providing, financing, operating, or regulating public facilities needed to serve development may not establish binding level-of-service standards on governmental entities that do bear those responsibilities.

163.3191: Evaluation and appraisal of comprehensive plan.—

163.3191(1): At least once every 7 years, each local government shall evaluate its comprehensive plan to determine if plan amendments are necessary to reflect changes in state requirements in this part since the last update of the comprehensive plan, and notify the state land planning agency as to its determination.

163.3191(2): If the local government determines amendments to its comprehensive plan are necessary to reflect changes in state requirements, the local government shall prepare and transmit within 1 year such plan amendment or amendments for review pursuant to s. 163.3184.

163.3191(3): Local governments are encouraged to comprehensively evaluate and, as necessary, update comprehensive plans to reflect changes in local conditions.

DRAFT

3. UTILITIES AND JURISDICTIONS SERVED

This section contains two tables showing local government jurisdictions and utilities that provide gross (raw) or finished water to local governments. The utilities listed have treatment capacity and water use greater than 0.1 MGD.

Table F-1 identifies the local governments within the jurisdiction of the LEC Planning Area and the PWS utilities serving those local governments. The first column in **Table F-1** lists the name of the local government. The second column identifies the local government, private PWS utility, or utilities providing raw or finished water to the local government.

Table F-1. Utilities and local governments serving local governments in the LEC Planning Area.

Local Government	Utility/Entity Serving Local Government
Palm Beach County	
Palm Beach County (unincorporated)	Palm Beach County Water Utilities Department; City of Boynton Beach; Village of Golf; Town of Jupiter; Maralago Cay; Village of Palm Springs; Seacoast Utility Authority; Seminole Improvement District; Tropical Breeze Estates; Village of Wellington
Atlantis, City of	Palm Beach County Water Utilities Department
Belle Glade, City of	Glades Utility Authority
Boca Raton, City of	City of Boca Raton
Boynton Beach, City of	City of Boynton Beach, Palm Beach County Water Utilities Department
Briny Breezes, Town of	City of Boynton Beach
Cloud Lake, Town of	Palm Beach County Water Utilities Department
Delray Beach, City of	City of Delray Beach
Glen Ridge, Town of	Palm Beach County Water Utilities Department
Golf, Village of	Village of Golf
Greenacres, City of	Palm Beach County Water Utilities Department
Gulf Stream, Town of	City of Delray Beach
Haverhill, Town of	Palm Beach County Water Utilities Department
Highland Beach, Town of	Town of Highland Beach
Hypoluxo, Town of	City of Boynton Beach; Town of Manalapan
Juno Beach, Town of	Town of Jupiter; Seacoast Utility Authority
Jupiter, Town of	Town of Jupiter
Jupiter Inlet Colony, Town of	Village of Tequesta
Lake Clarke Shores, Town of	Palm Beach County Water Utilities Department; Town of Lake Worth; Village of Palm Springs
Lake Park, Town of	Seacoast Utility Authority
Lake Worth, City of	City of Lake Worth, Palm Beach County Water Utilities Department
Lantana, Town of	Town of Lantana
Loxahatchee Groves, Town of	Unincorporated Palm Beach County
Manalapan, Town of	Town of Manalapan
Mangonia Park, Town of	Town of Mangonia Park
North Palm Beach, Village of	Seacoast Utility Authority
Ocean Ridge, Town of	City of Boynton Beach
Pahokee, City of	Glades Utility Authority

Table F-1. Continued.

Local Government	Utility/Entity Serving Local Government
Palm Beach, Town of	City of West Palm Beach Public Utilities
Palm Beach Gardens, City of	Seacoast Utility Authority
Palm Beach Shores, Town of	City of Riviera Beach
Palm Springs, Village of	Village of Palm Springs
Riviera Beach, City of	City of Riviera Beach
Royal Palm Beach, Village of	Palm Beach County Water Utilities Department; Wellington Public Utilities Department
South Bay, City of	Glades Utility Authority
South Palm Beach, Town of	City of West Palm Beach Public Utilities
Tequesta, Village of	Village of Tequesta
Wellington, Village of	Village of Wellington ; Palm Beach County Water Utilities Department
West Palm Beach, City of	City of West Palm Beach Public Utilities; Palm Beach County Water Utilities Department
Broward County	
Broward County (unincorporated)	Broward County Water & Wastewater Services; City of Hollywood; Sunrise Utilities Department
Coconut Creek, City of	Broward County Water & Wastewater Services; City of Margate
Cooper City, City of	Cooper City Utilities Department
Coral Springs, City of	City of Coral Springs; Coral Springs Improvement District; North Springs Improvement District; Royal Utility Company
Dania Beach, City of	City of Dania Beach; City of Hollywood; Broward County Water & Wastewater Services
Davie, Town of	City of Hollywood; Town of Davie; City of Fort Lauderdale; Sunrise Utilities Dept; Tindell Hammock; Broward County Water & Wastewater Services
Deerfield Beach, City of	City of Deerfield Beach; Broward County Water & Wastewater Services
Fort Lauderdale, City of	City of Fort Lauderdale
Hallandale Beach, City of	City of Hallandale Beach; Broward County Water & Wastewater Services
Hillsboro Beach, Town of	Town of Hillsboro Beach
Hollywood, City of	City of Fort Lauderdale; City of Hollywood; Broward County Water & Wastewater Services
Lauderdale-by-the-Sea, Town of	City of Fort Lauderdale; City of Pompano Beach Utilities Department
Lauderdale Lakes, City of	Broward County Water & Wastewater Services
Lauderhill, City of	City of Lauderhill
Lazy Lake, Village of	City of Fort Lauderdale
Lighthouse Point, City of	City of Pompano Beach Utilities Department; Broward County Water & Wastewater Services
Margate, City of	City of Margate
Miramar, City of	City of Miramar
North Lauderdale, City of	City of North Lauderdale; Broward County Water & Wastewater Services
Oakland Park, City of	City of Fort Lauderdale; Broward County Water & Wastewater Services
Parkland, City of	Parkland Utilities, Inc.; North Springs Improvement District; Broward County Water & Wastewater Services
Pembroke Park, Town of	Broward County Water & Wastewater Services
Pembroke Pines, City of	City of Pembroke Pines; Broward County Water & Wastewater Services
Plantation, City of	City of Plantation
Pompano Beach, City of	City of Pompano Beach Utilities Department; Broward County Water & Wastewater Services
Sea Ranch Lakes, Village of	City of Fort Lauderdale
Seminole Tribe of Florida	Seminole Hollywood Reservation
Southwest Ranches, Town of	City of Pembroke Pines; Sunrise Utilities Department
Sunrise, City of	Sunrise Utilities Department

Table F-1. Continued.

Local Government	Utility/Entity Serving Local Government
Tamarac, City of	City of Tamarac; City of Fort Lauderdale; Broward County Water & Wastewater Services
Weston	Sunrise Utilities Department
West Park	Broward County Water & Wastewater Services
Wilton Manors	City of Fort Lauderdale
Miami-Dade County	
Miami-Dade County (unincorporated)	City of Homestead; City of North Miami Beach; City of North Miami; Miami-Dade Water & Sewer Department
Aventura	City of North Miami Beach; Miami-Dade Water & Sewer Department
Bal Harbour Village, City of	Miami-Dade Water & Sewer Department
Bay Harbor Islands, Town of	Miami-Dade Water & Sewer Department
Biscayne Park, Village of	City of North Miami
Coral Gables, City of	Miami-Dade Water & Sewer Department
Cutler Bay, Town of	Miami-Dade Water & Sewer Department
Doral, City of	Miami-Dade Water & Sewer Department
El Portal, Village of	Miami-Dade Water & Sewer Department
Florida City, City of	Florida City Water and Sewer Department; City of Homestead
Golden Beach, Town of	City of North Miami Beach
Hialeah, City of	Miami-Dade Water & Sewer Department
Hialeah Gardens, City of	Miami-Dade Water & Sewer Department
Homestead, City of	City of Homestead; Miami-Dade Water & Sewer Department
Indian Creek, Village of	Miami-Dade Water & Sewer Department
Key Biscayne, Village of	Miami-Dade Water & Sewer Department
Medley, Town of	Miami-Dade Water & Sewer Department
Miami, City of	Miami-Dade Water & Sewer Department
Miami Beach, City of	Miami-Dade Water & Sewer Department
Miami Gardens, City of	City of North Miami Beach; Miami-Dade Water & Sewer Dept
Miami Lakes, Town of	Miami-Dade Water & Sewer Department
Miami Shores, Village of	City of North Miami; Miami-Dade Water & Sewer Department
Miami Springs, City of	Miami-Dade Water & Sewer Department
North Bay Village, City of	Miami-Dade Water & Sewer Department
North Miami, City of	City of North Miami; Miami-Dade Water & Sewer Department
North Miami Beach, City of	City of North Miami Beach
Opa-Locka, City of	Miami-Dade Water & Sewer Department
Palmetto Bay, Village of	Miami-Dade Water & Sewer Department
Pinecrest, Village of	Miami-Dade Water & Sewer Department
South Miami, City of	Miami-Dade Water & Sewer Department
Sunny Isles Beach, City of	City of North Miami Beach
Surfside, Town of	Miami-Dade Water & Sewer Department
Sweetwater, City of	Miami-Dade Water & Sewer Department
Virginia Gardens, Village of	Miami-Dade Water & Sewer Department
West Miami, City of	Miami-Dade Water & Sewer Department
Monroe County	
Monroe County (unincorporated)	Florida Keys Aqueduct Authority
Islamorada, Village of	Florida Keys Aqueduct Authority
Key Colony Beach, City of	Florida Keys Aqueduct Authority
Key West, City of	Florida Keys Aqueduct Authority
Layton, City of	Florida Keys Aqueduct Authority
Marathon, City of	Florida Keys Aqueduct Authority

Conversely, **Table F-2** identifies the local government utilities providing raw or finished water. The first column of **Table F-2** lists the name of the local government. The second column identifies whether the utility is part of a special district such as 298, privately owned, or part of the local government. The third column identifies the incorporated and unincorporated areas of the LEC Planning Area within that PWS utility's service area. In addition to the PWS utilities that serve communities, the AG Holley State Hospital in the Town of Lantana in Palm Beach County, has its own utility; however, the hospital and its utility are expected to be closed soon.

Table F-2. Utilities and local governments that serve the LEC Planning Area.

Utility/Entity Name	Utility Type	Local Governments Served (Raw or Finished)
Palm Beach County		
Boca Raton, City of	local government	City of Boca Raton
Boynton Beach, City of	local government	City of Boynton Beach; Town of Briny Breezes; Town of Hypoluxo; Town of Ocean Ridge; Unincorporated Palm Beach County
Delray Beach, City of	local government	City of Delray Beach; Town of Gulf Stream; Unincorporated Palm Beach County
Glades Utility Authority	local government	City of Belle Glade; City of Pahokee; City of South Bay
Golf, Village of	local government	Village of Golf; Unincorporated Palm Beach County
Highland Beach, Town of	local government	Town of Highland Beach
Jupiter, Town of	local government	Town of Jupiter; Town of Juno Beach; Portions of Unincorporated Martin County; Unincorporated Palm Beach County
Lake Worth, City of	local government	City of Lake Worth; Town of Lake Clarke Shores; Unincorporated Palm Beach County
Lantana, Town of	local government	Town of Lantana
Manalapan, Town of	local government	Town of Manalapan; Town of Hypoluxo
Mangonia Park, Town of	local government	Town of Mangonia Park
Maralago Cay	privately owned	Unincorporated Palm Beach County
Palm Beach County Water Utilities Department	local government	City of Atlantis; City of Boynton Beach; Town of Cloud Lake; Town of Glen Ridge; City of Greenacres; Town of Haverhill; Town of Lake Clarke Shores; City of Lake Worth; Town of Loxahatchee Groves; Unincorporated Palm Beach County; Village of Palm Springs; Village of Royal Palm Beach; Village of Wellington; City of West Palm Beach
Palm Springs, Village of	local government	Village of Palm Springs; Town of Lake Clarke Shores; Unincorporated Palm Beach County
Riviera Beach, City of	local government	City of Riviera Beach; Town of Palm Beach Shores
Seacoast Utility Authority	special district	Town of Juno Beach; Town of Lake Park; Village of North Palm Beach; City of Palm Beach Gardens; Unincorporated Palm Beach County
Seminole Improvement District	special district	Unincorporated Palm Beach County
Tequesta, Village of	local government	Village of Tequesta; Town of Jupiter Inlet Colony
Tropical Breeze Estates	privately owned	Unincorporated Palm Beach County
Wellington, Village of	local government	Village of Royal Palm Beach; Village of Wellington; Unincorporated Palm Beach County
West Palm Beach Public Utilities, City of	local government	City of West Palm Beach; Town of Palm Beach; Town of South Palm Beach

Table F-2. Continued.

Utility/Entity Name	Utility Type	Local Governments Served (raw & finished)
Broward County		
Broward County Water & Wastewater Services	local government	Unincorporated Broward County; City of Coconut Creek (Coconut Creek distributes to the City of Parkland and Seminole Tribe Coconut Creek Reservation); City of Dania Beach; Town of Davie; City of Deerfield Beach; City of Hallandale Beach; City of Hollywood; City of Lauderdale Lakes; City of Lighthouse Point; City of North Lauderdale; City of Oakland Park; City of Parkland; City of Pembroke Park; City of Pembroke Pines; City of Pompano Beach; City of Tamarac; West Park
Cooper City Utilities Department	local government	City of Cooper City
Coral Springs, City of	local government	City of Coral Springs
Coral Springs Improvement District	special district	City of Coral Springs
Dania Beach, City of	local government	City of Dania Beach
Davie, Town of	local government	Town of Davie; Seminole Reservation (Hard Rock Casino)
Deerfield Beach, City of	local government	City of Deerfield Beach
Fort Lauderdale, City of	local government	City of Davie; City of Fort Lauderdale; City of Hollywood; Town of Lauderdale-by-the-Sea; Village of Lazy Lake; City of Oakland Park; Village of Sea Ranch Lakes; City of Tamarac; City of Wilton Manors
Hallandale Beach, City of	local government	City of Hallandale Beach
Hillsboro Beach, Town of	local government	Town of Hillsboro Beach
Hollywood, City of	local government	City of Hollywood; City of Dania Beach; Seminole Hollywood Reservation; City of West Park; Unincorporated Broward County
Lauderhill, City of	local government	City of Lauderhill
Margate, City of	local government	City of Margate; City of Coconut Creek
Miramar City of	local government	City of Miramar
North Lauderdale, City of	local government	City of North Lauderdale
North Springs Improvement District	special district	City of Parkland; City of Coral Springs
Parkland Utilities, Inc.	privately owned	City of Parkland
Pembroke Pines, City of	local government	City of Pembroke Pines; Town of Southwest Ranches
Plantation, City of	local government	City of Plantation
Pompano Beach Utilities Department, City of	local government	City of Pompano Beach; City of Lighthouse Point; Town of Lauderdale-By-The-Sea
Royal Utility Company	privately owned	City of Coral Springs
Seminole Tribe of Florida Utility		Seminole Hollywood Reservation
Sunrise Utilities Department	local government	City of Sunrise, Town of Davie, Town of Southwest Ranches, City of Weston, Unincorporated Broward County
Tamarac, City of	local government	City of Tamarac
Tindall Hammock	special district	Town of Davie
Miami-Dade County		
Americana Village	privately owned	Unincorporated Miami-Dade County
Florida City Water and Sewer Department	local government	City of Florida City
Homestead, City of	local government	City of Florida City; City of Homestead; Unincorporated Miami-Dade County

Table F-2. Continued.

Utility/Entity Name	Utility Type	Local Governments Served (raw & finished)
Miami-Dade Water & Sewer Department	local government	Aventura; Village of Bal Harbour; Town of Bay Harbour Islands; City of Coral Gables; Town of Cutler Bay, City of Doral; Village of El Portal; City of Hialeah Gardens; City of Hialeah; City of Homestead; Village of Indian Creek; Village of Key Biscayne; Town of Medley; City of Miami Beach; City of Miami Gardens; Town of Miami Lakes; Village of Miami Shores; City of Miami; City of Miami Springs; Unincorporated Miami-Dade County; City of North Bay Village; City of North Miami; City of Opa-Locka; Village of Palmetto Bay; Village of Pinecrest; City of South Miami; Town of Surfside; City of Sweetwater; Village of Virginia Gardens; City of West Miami
North Miami, City of	local government	City of North Miami; Village of Biscayne Park; Village of Miami Shores; Unincorporated Miami-Dade County
North Miami Beach, City of	local government	City of North Miami Beach; City of Aventura; Town of Golden Beach; City of Miami Gardens; City of Sunny Isles Beach; Unincorporated Miami-Dade County
Monroe County		
Florida Keys Aqueduct Authority	special district	Village of Islamorada; City of Key Colony Beach; City of Key West; City of Layton; City of Marathon; Unincorporated Monroe County

DRAFT

4. MAPS OF UTILITY AREAS CURRENTLY SERVED (2010) AND FUTURE UTILITY AREA SERVICE (2030)

Figure F-1 is a map of the 2010 utility service areas in Palm Beach County. **Figure F-2** is a map of the projected 2030 utility service area maps in Palm Beach County. **Figure F-3** and **Figure F-4** provide this same information for Broward County and **Figure F-5** and **Figure F-6** provide this information for Miami-Dade County. Monroe County has only one PWS utility, Florida Keys Aqueduct Authority, so no service area map is provided. The portion of Hendry County within the LEC Planning Area is not served by any PWS utility.

DRAFT

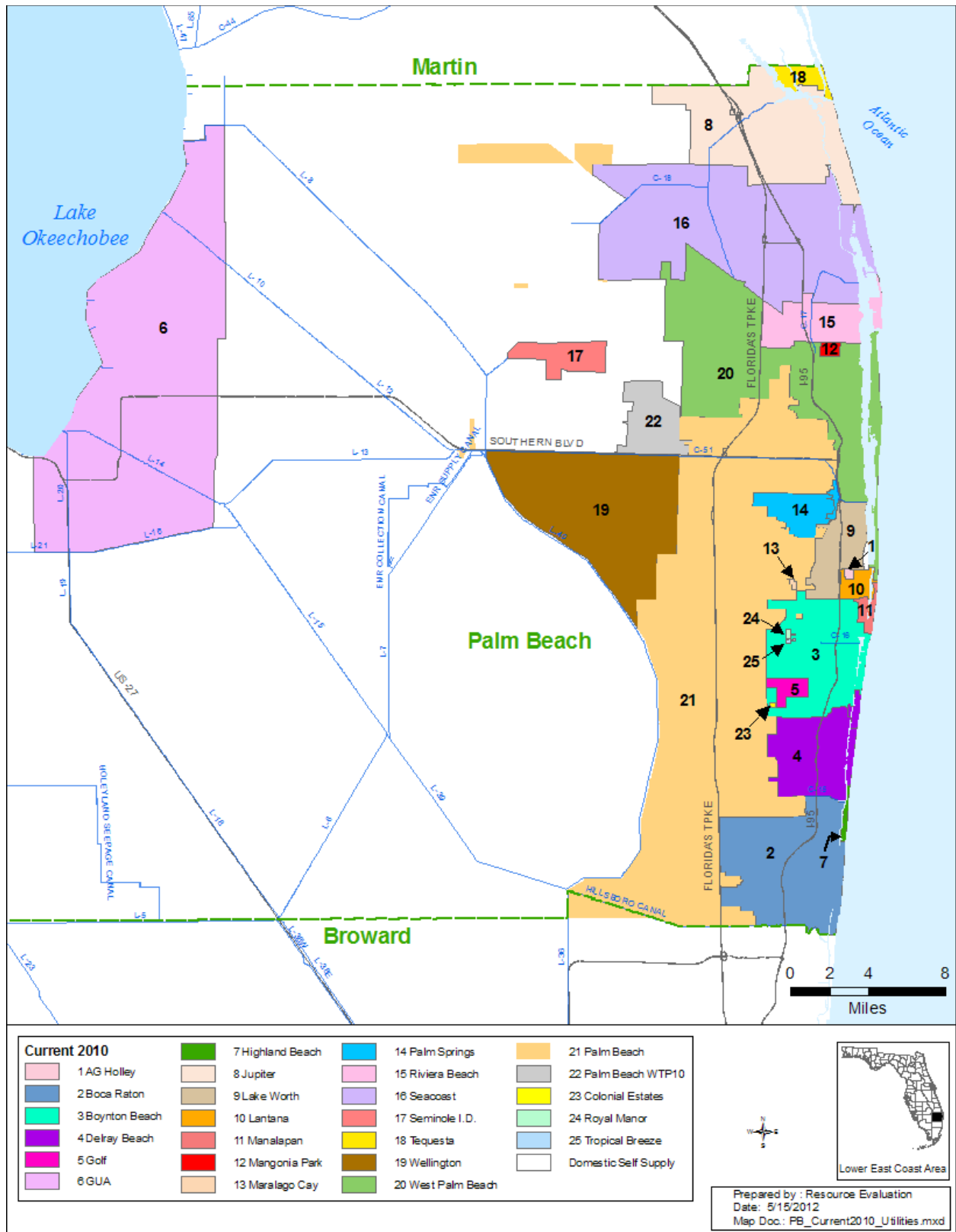


Figure F-1. 2010 utility service areas in Palm Beach County.

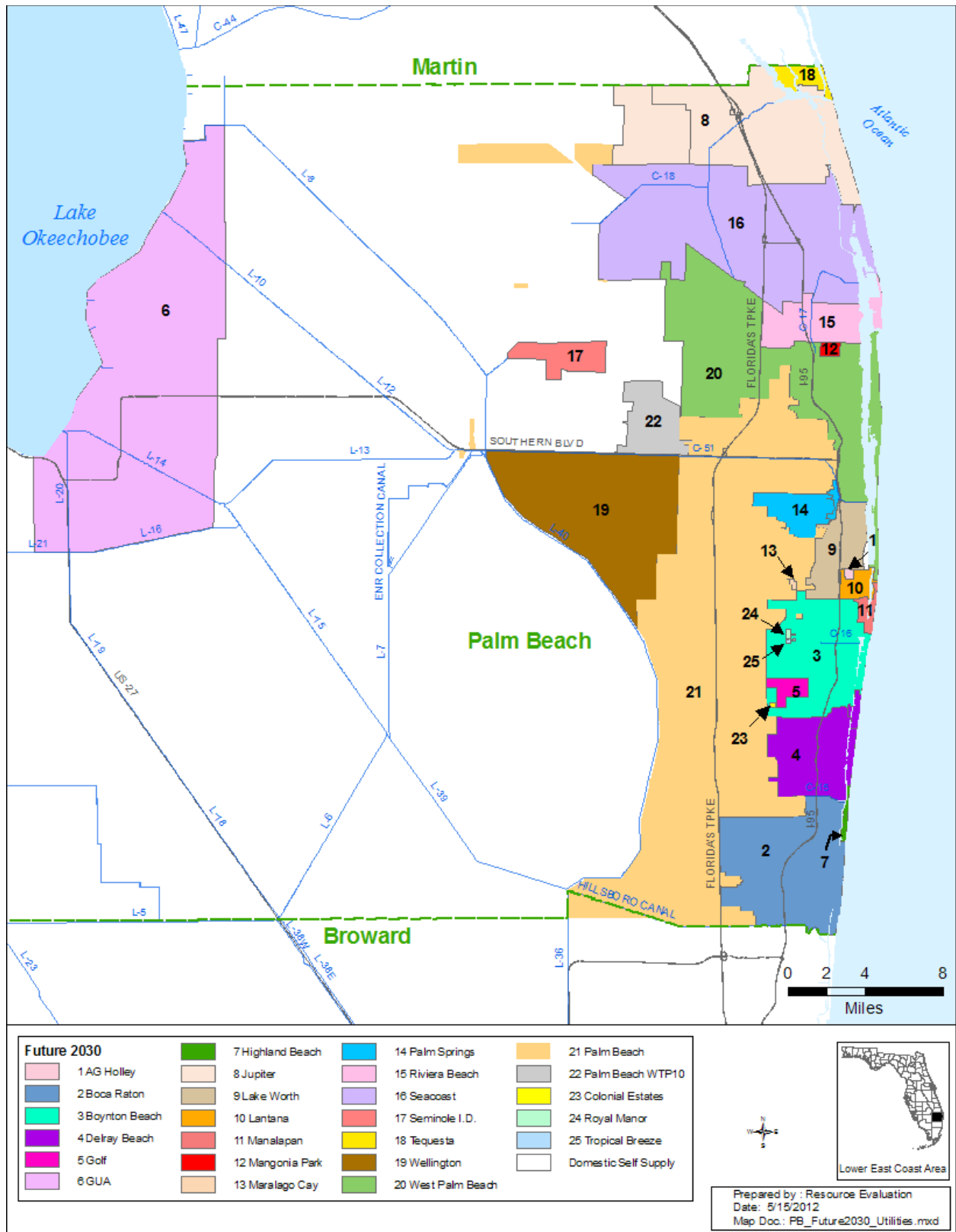


Figure F-2. Projected 2030 utility service areas in Palm Beach County.

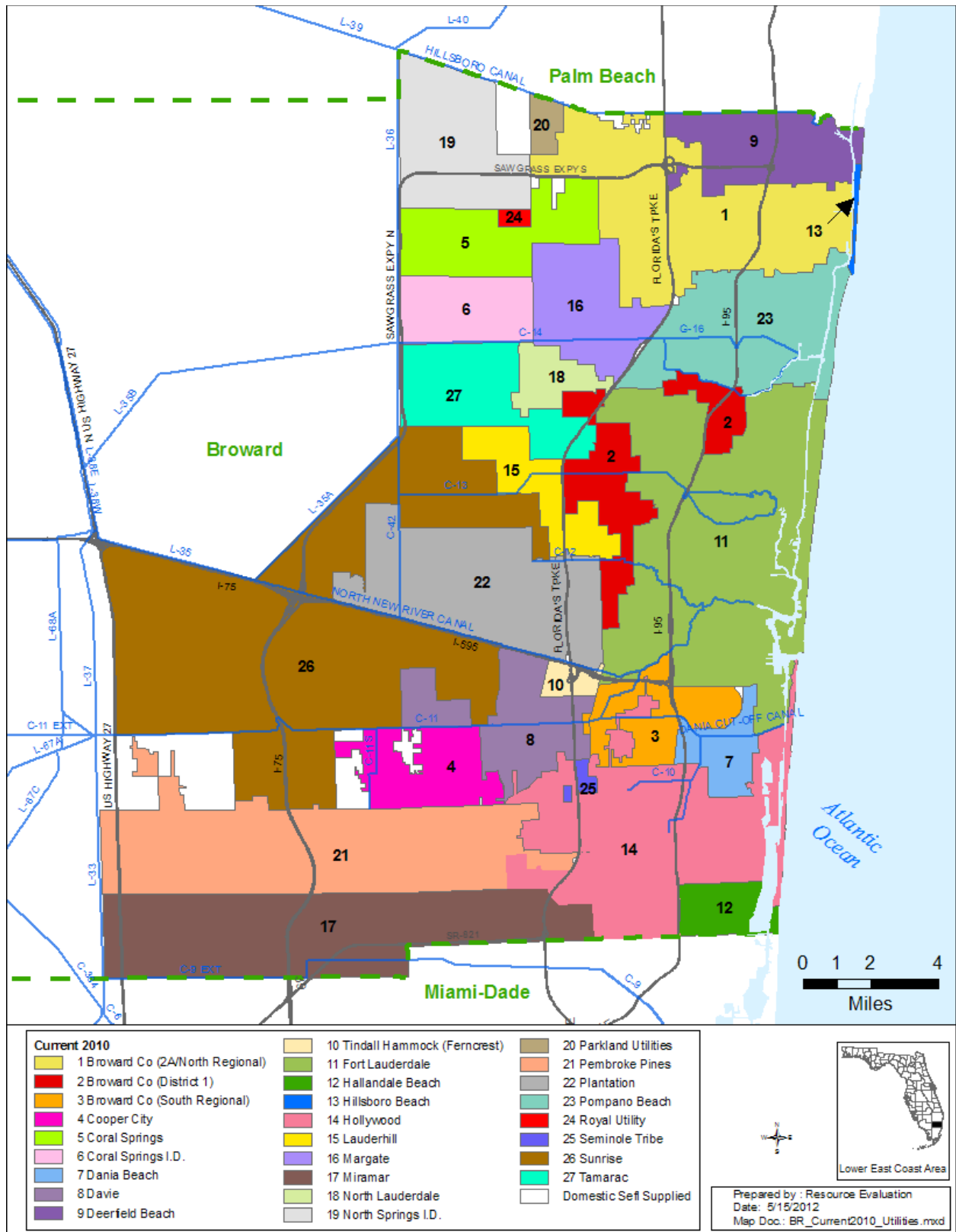


Figure F-3. 2010 utility service areas in Broward County.

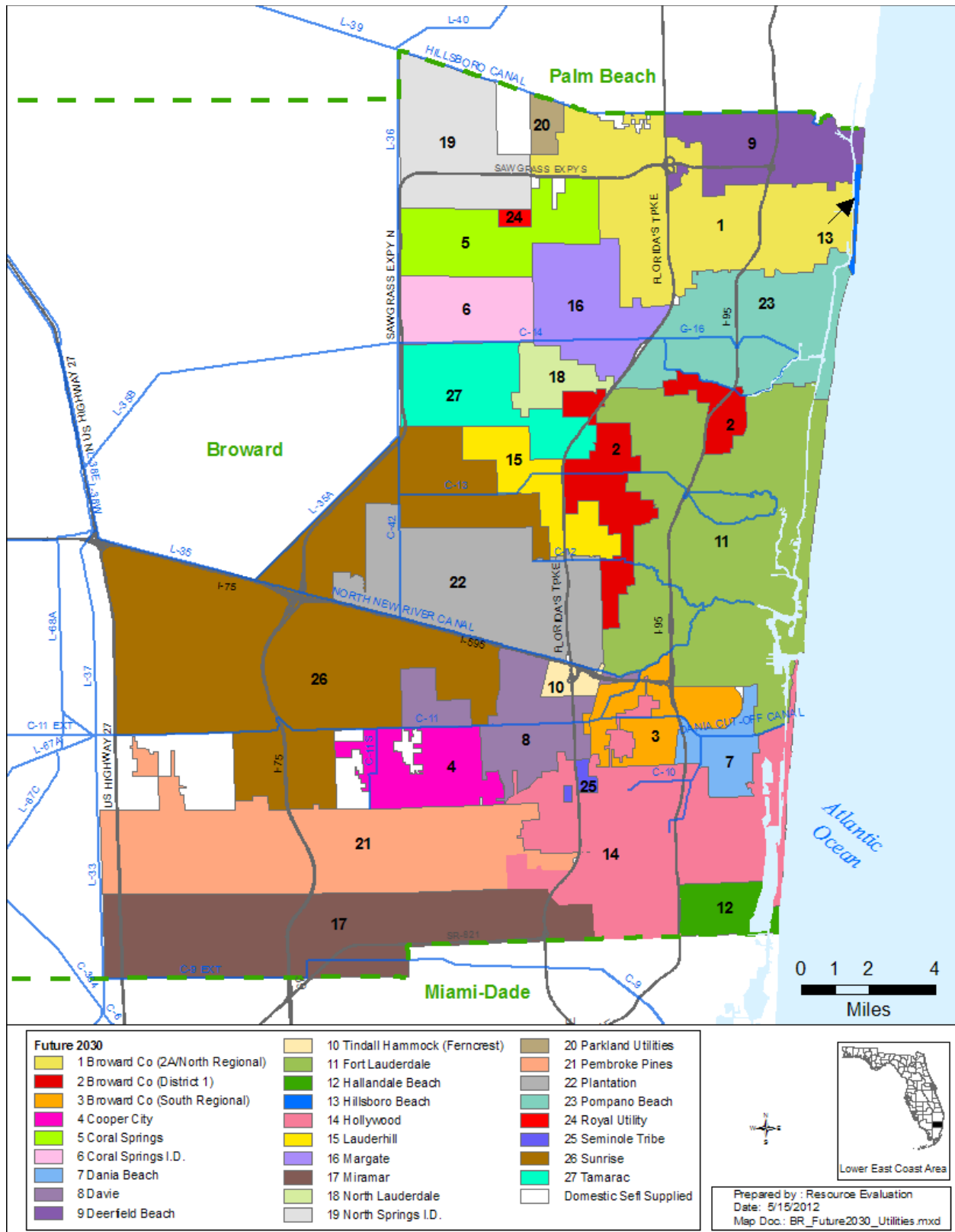


Figure F-4. Projected 2030 utility service areas in Broward County.

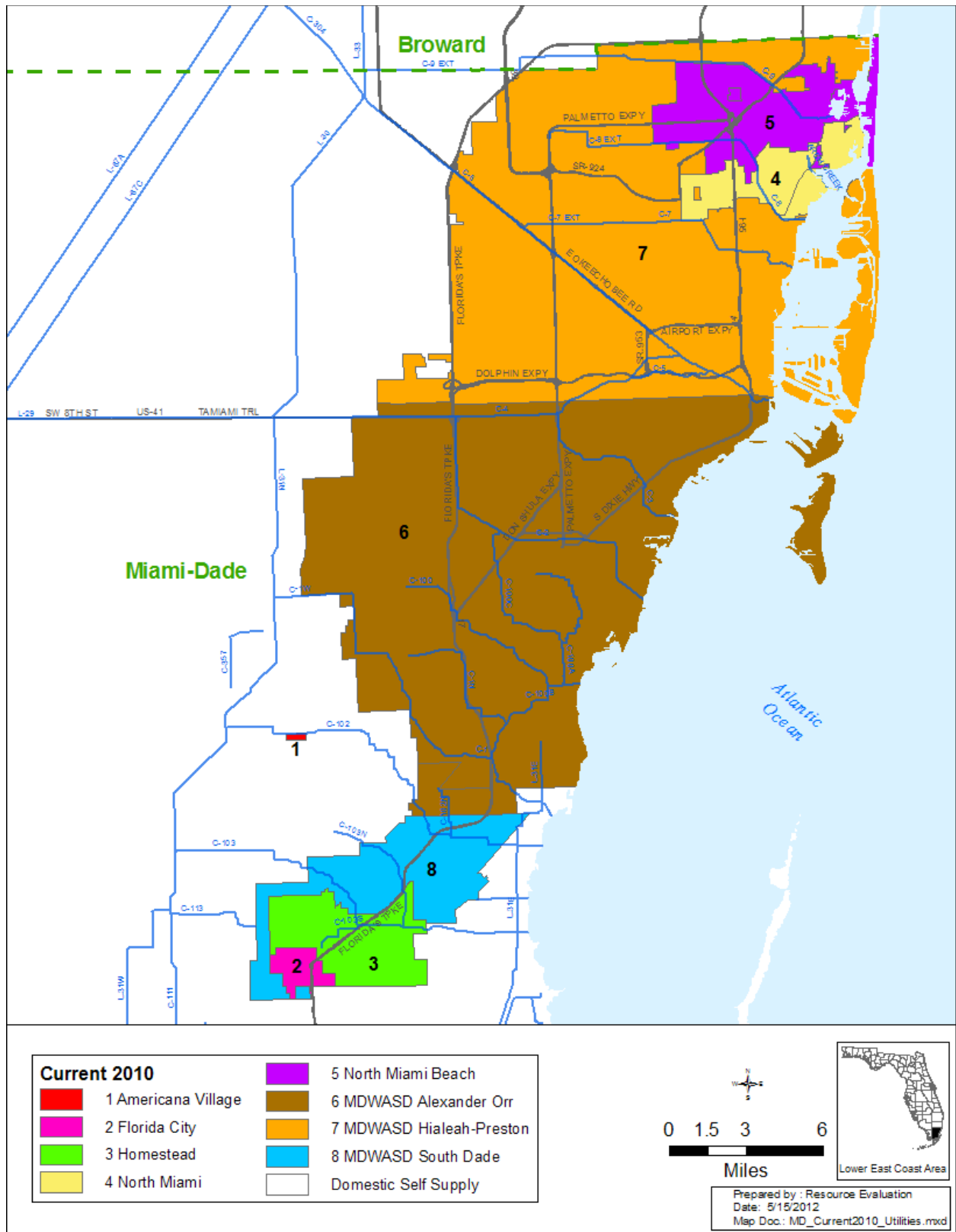


Figure F-5. 2010 utility service areas in Miami-Dade County.

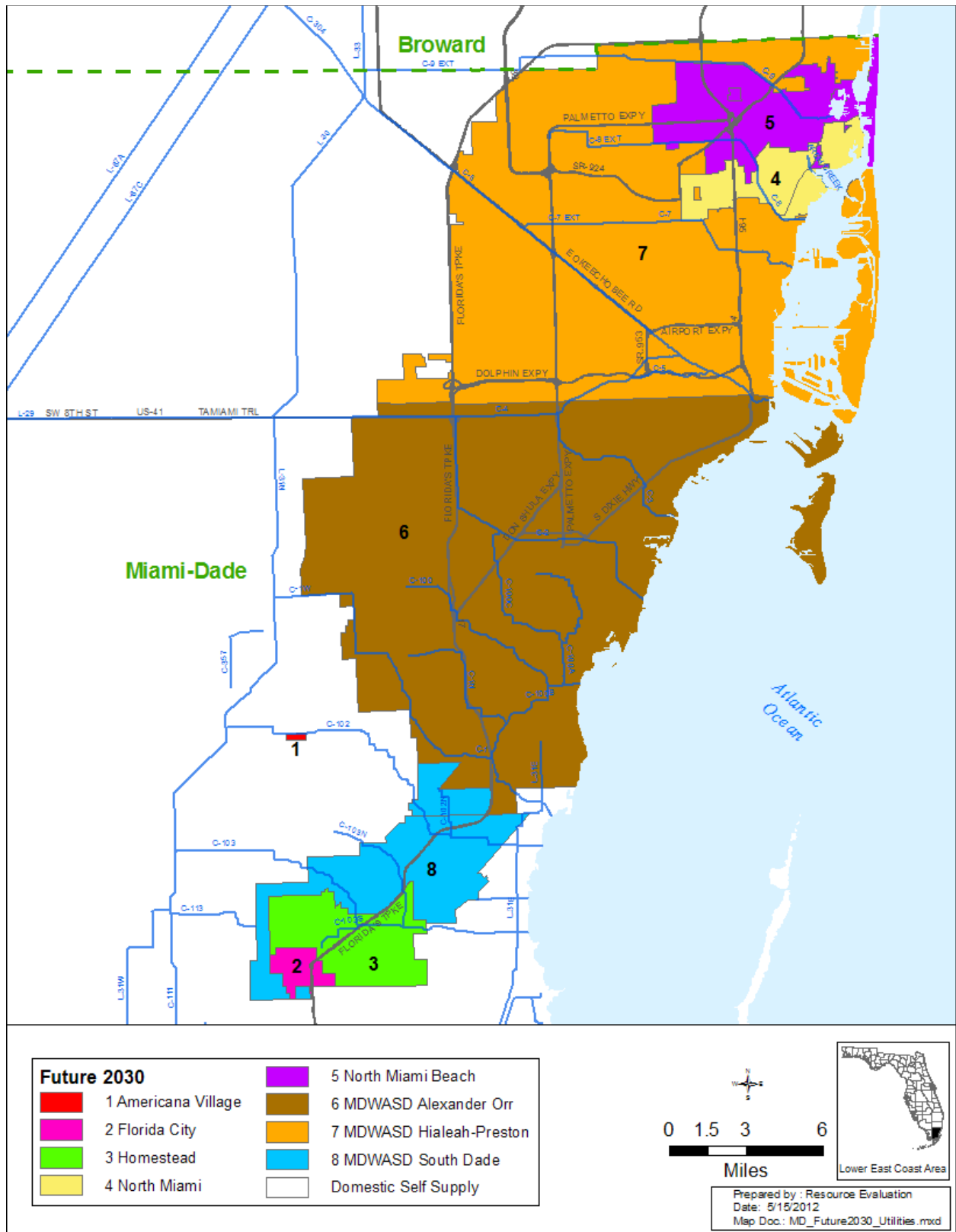


Figure F-6. Projected 2030 utility service areas in Miami-Dade County.