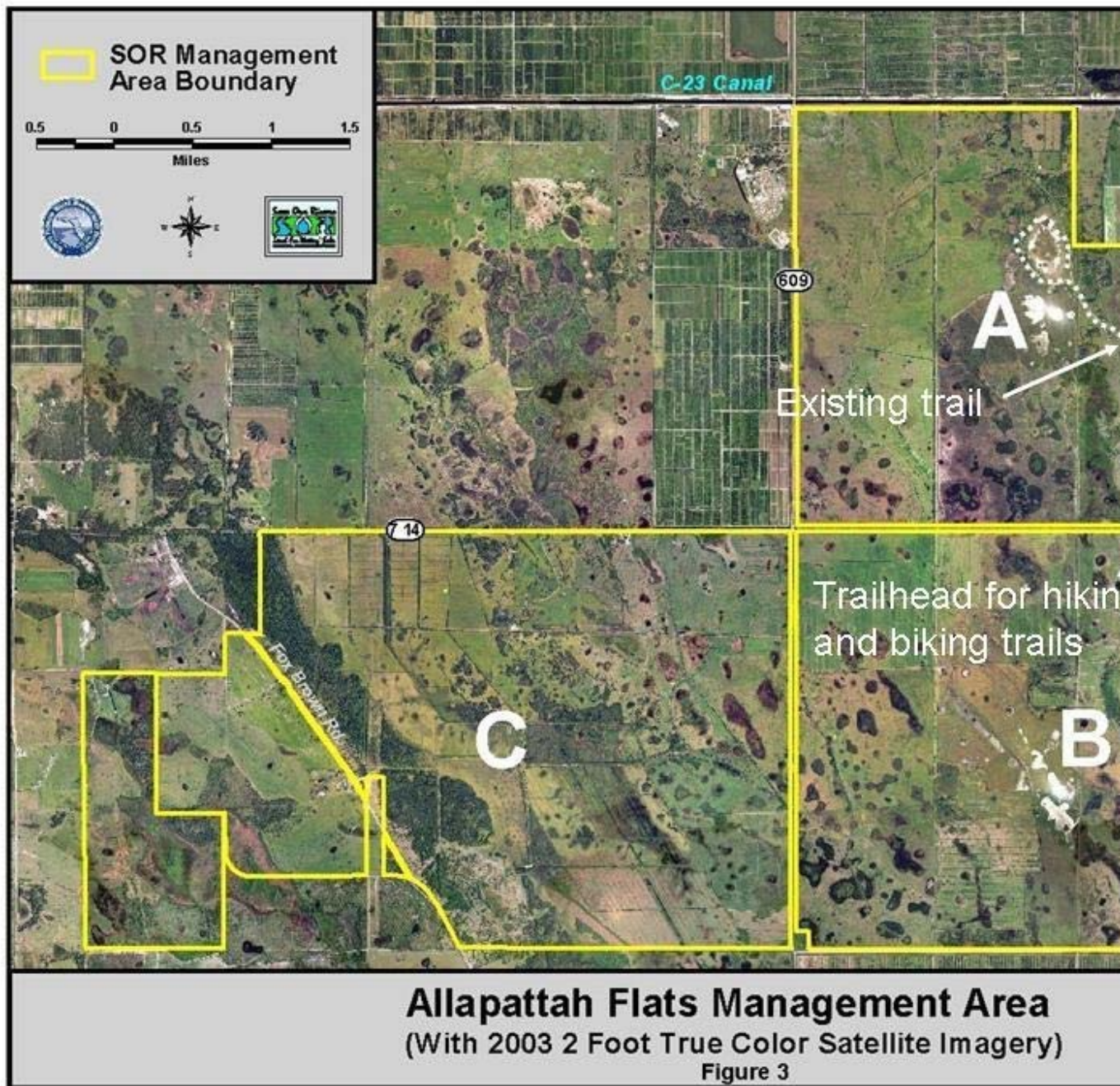


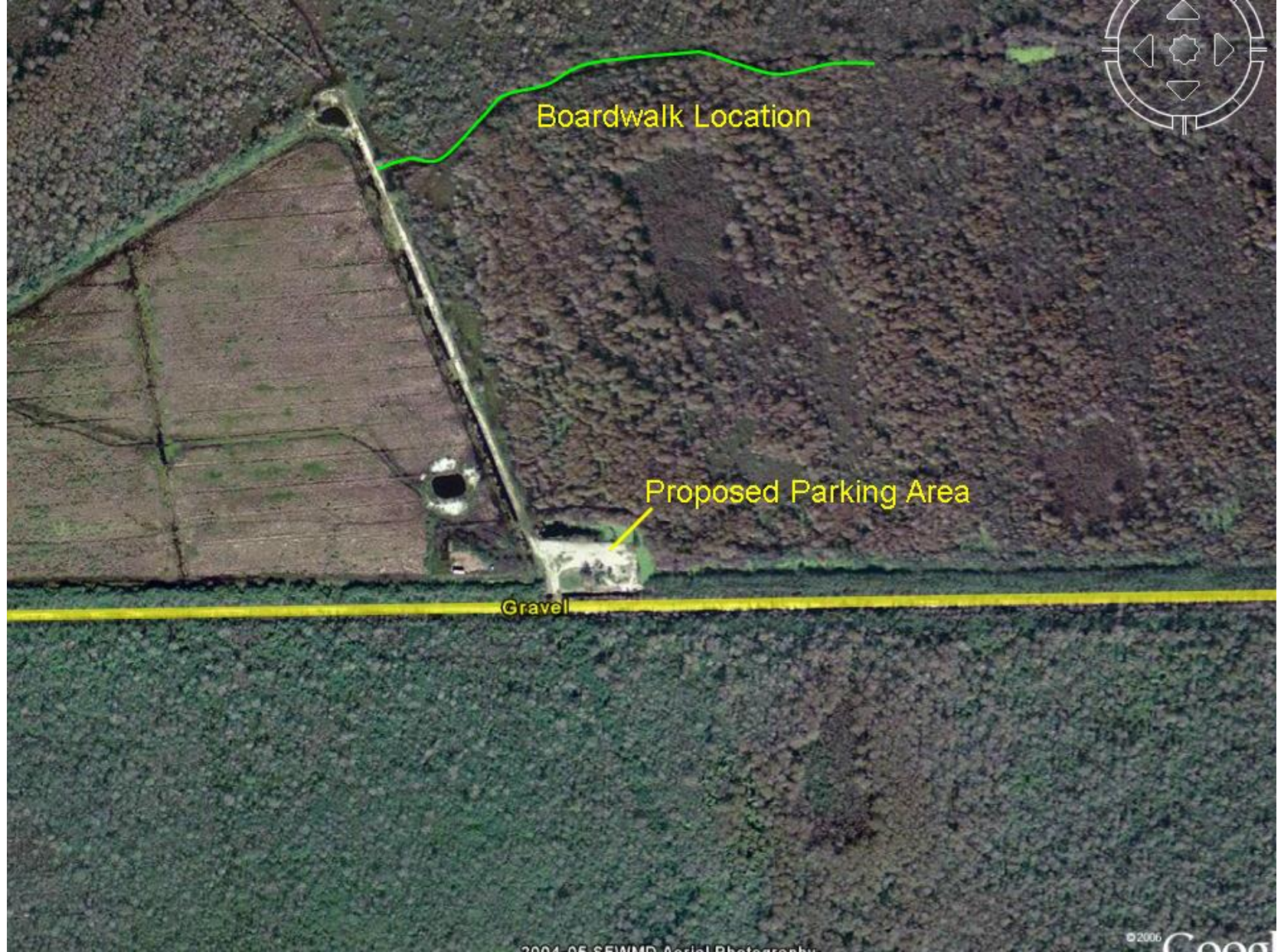
Allapattah comes from the Seminole Indian word for alligator. But don't let the land's namesake keep you from visiting this predominantly wet flatwoods expanse. By now you probably envision the property as a swampy, no-man's land teeming with alligators. But to the contrary, the land is inviting. In partnership with Martin County two trailheads on County Road 714 have been developed. Visitors may hike or bicycle 2.5 miles long user-friendly shellrock ranch road on north side of the road leading to a panoramic open vista of marsh that wading birds frequent. You can also enjoy the land on separate trails by horseback. On the south side the trailhead leads to horseback ride area and visitors might hike who do not mind the open pasture. There is one trailhead leading to five miles of equestrian trail, and an equestrian campground is in the development, off Fox Brown Road. You might see an alligator or two, but they are not here in great numbers. When you visit this area, you'll notice lots of open pasture that once was wet flatwoods until it was drained decades ago for cattle grazing. These open areas are targeted for extensive restoration by filling in the old drainage ditches to bring back the wetland vegetation and by replanting thousands of pines. In addition, the area is open for hunting at certain times of the year. Whatever way you choose to explore, be sure to bring a picnic lunch and take a relaxing break.











Before Project



















