



**SOUTH FLORIDA WATER MANAGEMENT DISTRICT (SFWMD)
WATER RESOURCES ADVISORY COMMISSION (WRAC)**

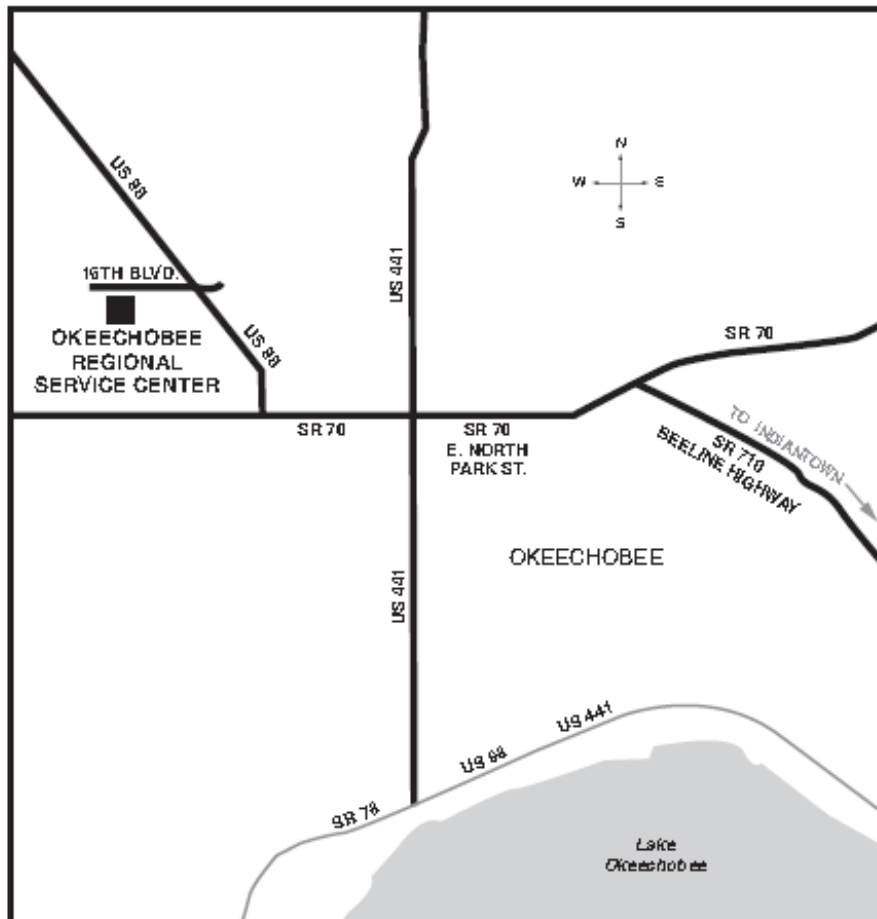
2014 LOWER KISSIMMEE BASIN WATER SUPPLY PLAN WORKSHOP

Wednesday, July 9, 2014, 1:30 PM
SFWMD Okeechobee Service Center - Meeting Room
3800 NW 16th Boulevard
Okeechobee, FL 34972

- P.1.** Welcome, Introductions, and Today's Topics – Mark Elsner, Section Administrator, Water Supply Development, SFWMD
- P.2** Overview of Florida Agriculture – Rich Budell, Director, Office of Agricultural Water Policy, FDACS
- P.3** The Process of Developing the Statewide Agricultural Projections – Tim Desmarais, P.E., Water Resources Manager, The Balmoral Group
- P.4** Dispersed Water Management Overview– Jeff Sumner, Director of Agricultural Policy, SFWMD
- P.5.** Overview of the Draft Lower Kissimmee Basin Water Supply Plan – Cynthia Gefvert, Section Leader and Chris Sweazy, Lead Hydrogeologist, SFWMD
- P.6.** Next Steps – Chris Sweazy
- P.7.** Public Comment
- P.8.** Adjourn

Okeechobee Service Center from SFWMD Headquarters Complex, West Palm Beach

3800 NW 16th Boulevard, Suite A, Okeechobee, FL 34972
(863) 462-5260, (800) 250-4200 • Hours: 8:00 a.m. to 5:00 p.m.
Fax: (863) 462-5385 • Regulatory Fax: (863) 462-5269



FROM THE EAST: Stay on the Beeline Highway (State Road 710) through Indiantown to Okeechobee.

- In Okeechobee continue west on State Road 70 to U.S. 98 North.
- From the intersection of State Road 70 and U.S. 98 North proceed north approximately 1.4 miles to NW 16th Boulevard. Left on NW 16th Boulevard to the Service Center.

FROM THE WEST: Take State Road 70 East into Okeechobee to U.S. 98 North.

- From the intersection of State Road 70 and U.S. 98 North proceed north approximately 1.4 miles to NW 16th Boulevard. Left on NW 16th Boulevard to the Service Center.

FROM THE NORTH OR SOUTH: Take U.S. 441 into Okeechobee.

- West at the intersection of U.S. 441 and State Road 70; continue west to U.S. 98 North.
- From the intersection of State Road 70 and U.S. 98 North proceed north approximately 1.4 miles to NW 16th Boulevard. Left on NW 16th Boulevard to the Service Center.



Lower Kissimmee Basin Water Supply Plan Workshop

Wednesday, July 09, 2014

SFWMD - Okeechobee Service Center

3800 NW 16th Boulevard, Suite A

Okeechobee, FL

1:30 pm – 5:00 pm

NAME (PRINT)	ORGANIZATION	TELEPHONE	E-MAIL
Martin L. Fitts	Highlands County Planning	863-402-6650	mfitts@hcbcc.org
Pat Renish	SJRWMD	321-984-4939	prenish@sjrwmd.com
John Hayford	Okeechobee Utility Auth.	863-763-9460	jhayford@ouaf.com
Tom Colios	SFWMD	561-682-6944	tcolios@sfwmd.gov
Roy Reno	OVA	863-763-9460	rreno@ouaf.com
BRIAN ROY	Royal Consulting Services	407-831-3095	ROYBL@ROYALCONSULTING.COM
IAN MILLER	SFWMD	561-682-2057	imiller@sfwmd.gov
Luke Polk	SFWMD FL Farm Bureau	352-727-0547	luke.polk@ffbf.org
Paul Lawrence	USDOI	786-390-8087	lawrence@strestone.org



Lower Kissimmee Basin Water Supply Plan Workshop

Wednesday, July 09, 2014

SFWMD - Okeechobee Service Center

3800 NW 16th Boulevard, Suite A

Okeechobee, FL

1:30 pm – 5:00 pm

NAME (PRINT)	ORGANIZATION	TELEPHONE	E-MAIL
Toni Edwards	SFWMD-WPB	(561)682-6387	tedwards@sfwmd.gov
Jack Rutledge	HCBC		
Joedene Thayer	HC&CC-Planning	(843) 402-6650	JThayer@hcbcc.org
Rebecca Elliott	FDAAS/OAWP	561 682-6080	relliott@sfwmd.gov
KERRY KATES	FFVA		KERRY.KATES@FFVA.COM
Paul Gray	Audubon FL		
Courtney Davis	UF/IFAS	863 763-86469	cbdavis@ufl.edu
Tim Desmarais	The Balmoral Group	407.629-2185 x106	TDesmarais@balmoralgroup.us
Frank Bernardino	Artfield Consulting	(561)718-2345	Frank@artfieldflorida.com