

S333 Working Group Update

Jodie Hutchins, P.E., SFWMD

Technical Oversight Committee Meeting
June 24, 2025

S333 Working Group Members

South Florida Water Management District

Everglades National Park

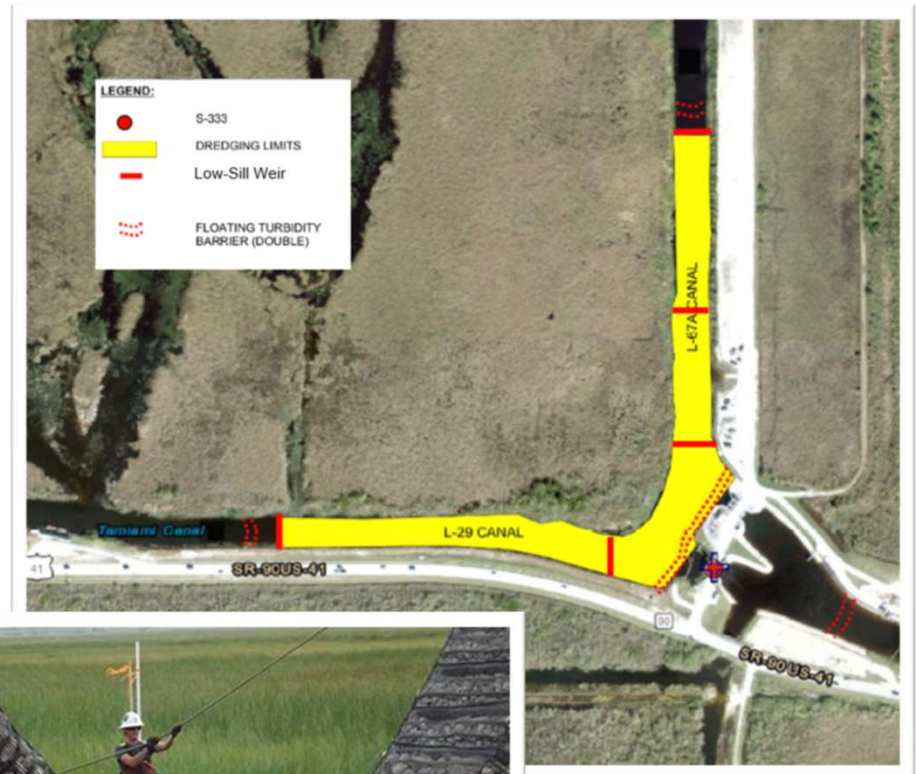
United States Army Corps of Engineers

Florida Department of Environmental Protection

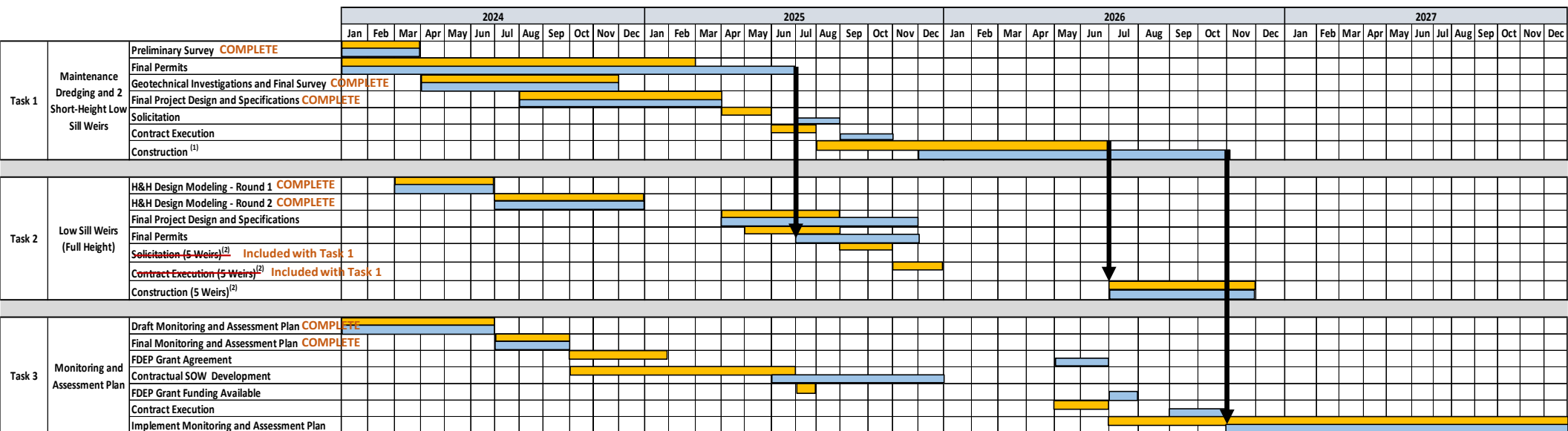
Arthur R. Marshall Loxahatchee National Wildlife Refuge

S333 Working Group Recommendations

- **Maintenance Dredging – Task 1**
 - 1,500 feet upstream of S333 complex in the L-67A and L-29 Canal
 - S333 Complex intake bay
 - 2 Short-height low-sill weirs
- **Low-Sill Weirs – Task 2**
 - Conceptualized locations shown in figure
 - Constructed to finished elevation
- **Monitoring and Assessment Plan – Task 3**
 - Evaluate the effectiveness
 - Identify optimization opportunities
 - Inform future actions



Schedule



⁽¹⁾ The duration for task 1 construction is contingent upon weather and flood control operations.

⁽²⁾ Includes raising the two "Short-Height" weirs in Task 1 to the final weir heights based on Round 2 H&H Modeling results.

December 2024
June 2025

Schedule contingent upon receiving all permits in hand and conducive construction conditions