

S333 Working Group Update

Jodie Hutchins, P.E., SFWMD

January 13, 2026

S333 Working Group Members

South Florida Water Management District

Everglades National Park

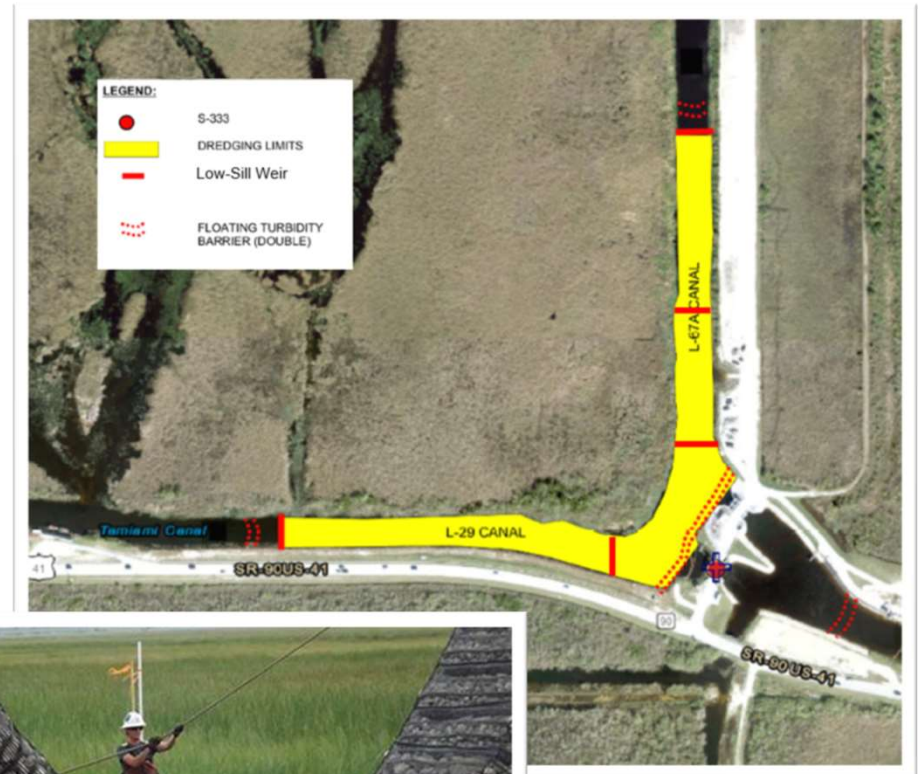
United States Army Corps of Engineers

Florida Department of Environmental Protection

Arthur R. Marshall Loxahatchee National Wildlife Refuge

S333 Working Group Recommendations

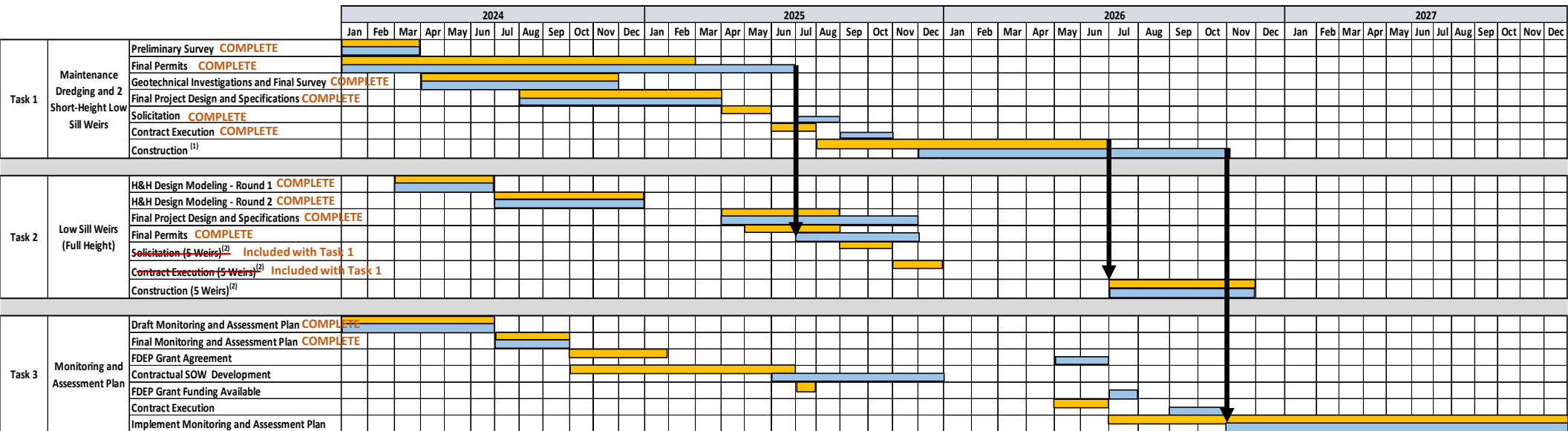
- **Maintenance Dredging – Task 1**
 - 1,500 feet upstream of S333 complex in the L-67A and L-29 Canal
 - S333 Complex intake bay
 - 2 Short-height low-sill weirs
- **Low-Sill Weirs – Task 2**
 - Constructed to finished elevation
- **Monitoring and Assessment Plan – Task 3**
 - Evaluate the effectiveness
 - Identify optimization opportunities
 - Inform future actions



Highlights on Progress


- ✓ **Final Project Design and Specifications for Tasks 1 and 2 Complete**
- ✓ **Final Permits In-Hand and Complete for Tasks 1 and 2**
- ✓ **Notice to Proceed (NTP) Issued to Begin Construction for Tasks 1 and 2**
- ✓ **Monitoring and Assessment Plan (MAP) Complete**
- ✓ **MAP Contractual Scopes of Work (SOWs) Under Development**
- ✓ **No Change in June 2025 Project Schedule**


Schedule



⁽¹⁾ The duration for task 1 construction is contingent upon weather and flood control operations.

⁽²⁾ Includes raising the two "Short-Height" weirs in Task 1 to the final weir heights based on Round 2 H&H Modeling results.

 December 2024

 June 2025

Schedule contingent upon receiving all permits in hand and conducive construction conditions