



# Chapter 8B: Lake Okeechobee Watershed Protection Plan Annual Progress Report

## Part III: Lake Okeechobee Watershed Construction Project

Anthony Betts

Planning and Project Management Section, Everglades and Estuaries Protection Bureau

The Northern Everglades and Estuaries Protection Program (NEEPP) promotes a comprehensive approach to the Lake Okeechobee Watershed. Using a combination of research, monitoring, source controls, and construction projects, the NEEPP works to restore and protect surface water resources by addressing water quality and storage within the natural system. This poster documents the key accomplishments and successes during the Water Year 2023 (WY2023; May 1, 2022 – April 30, 2023) reporting period.

**Twenty (20) operational projects** in WY2023 provided approximately:

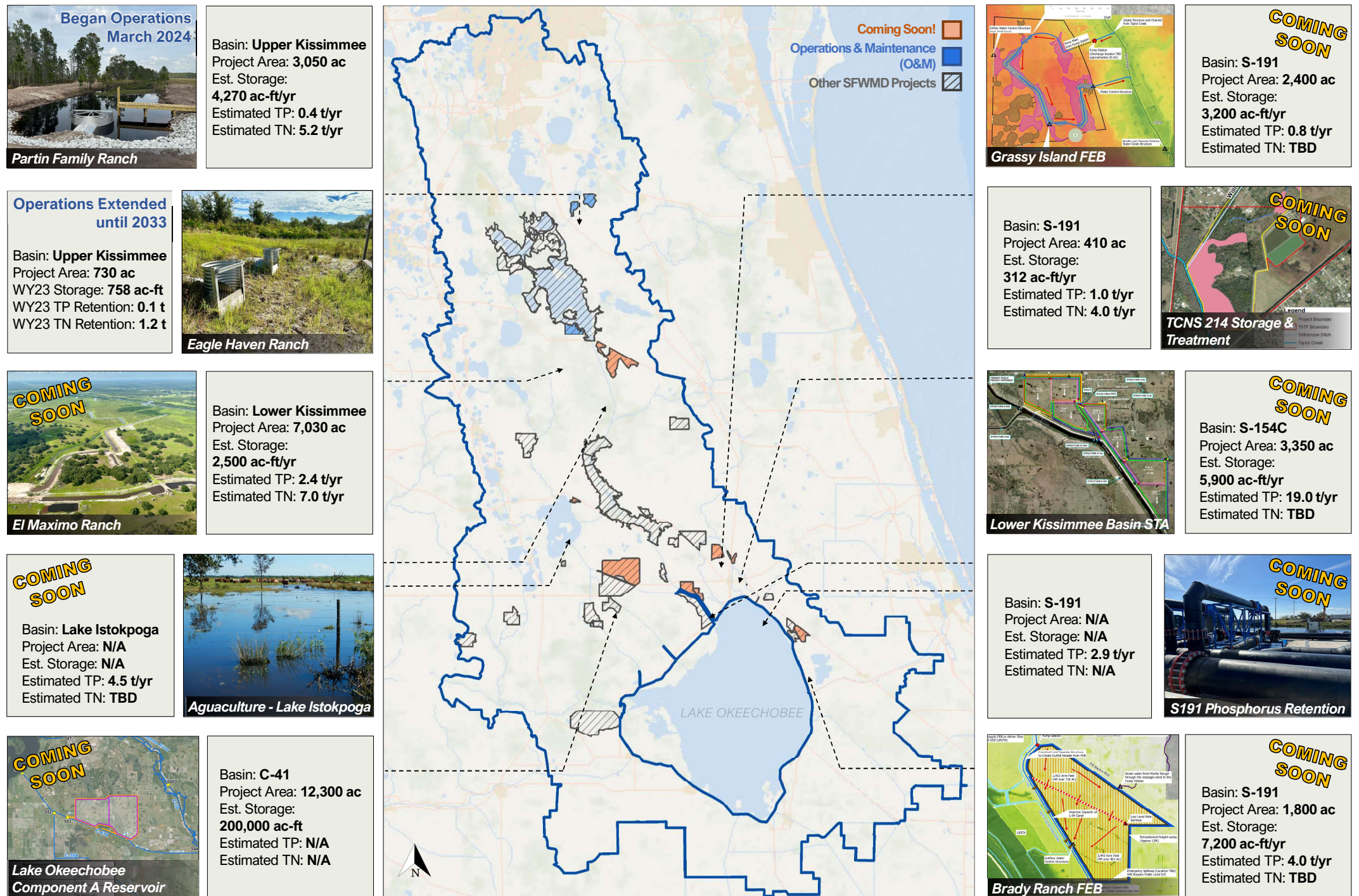
- > **80,000 acre-feet** (ac-ft) of storage
- > **29.5 metric tons** (t) total phosphorus (TP) retention
- > **161 metric tons** (t) total nitrogen (TN) retention
- > **50,000 acres** of hydrated wetlands

### Northern Everglades Request for Proposals:

In 2022, the South Florida Water Management District Governing Board authorized staff to negotiate up to **eight** projects in the Lake Okeechobee Watershed:

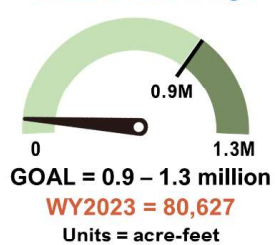
- **Four** 10-year contract extensions were executed for existing projects.
- **Two** new projects in the Lake Istokpoga & Upper Kissimmee subwatersheds were added.

## Advancing Watershed Construction Projects



## Progress Towards Water Quality and Storage Goals

### Total Watershed Storage



### Total Phosphorus (TP) Total Maximum Daily Load



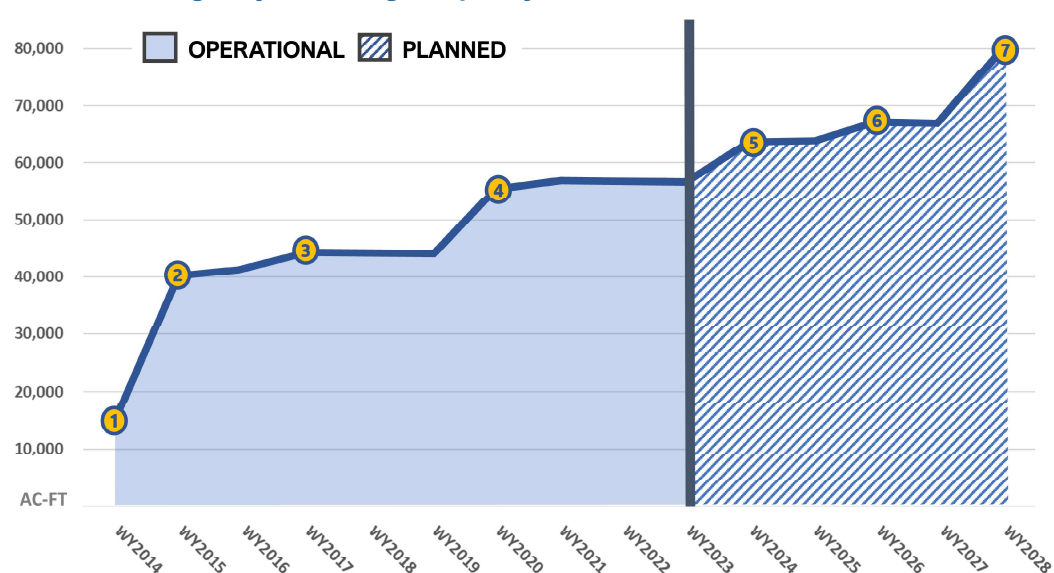
### Pelagic TP Concentration



### Submerged Aquatic Vegetation



### Increasing Project Storage Capacity in the Lake Okeechobee Watershed



- 1 BUCK ISLAND RANCH  
DIXIE RANCH  
WEST WATERHOLE
- 2 NICODEMUS SLOUGH  
RAFTER T RANCH
- 3 LLANO RANCHES
- 4 BRIGHTON VALLEY
- 5 PARTIN FAMILY RANCH  
EL MAXIMO RANCH
- 6 TCNS 214  
GRASSY ISLAND FEB
- 7 BRADY RANCH FEB  
LOWER KISSIMMEE STA

\* Long-term storage estimates (shown here) may vary from actual water year storage.

For more information: SCAN ME