

Settlement Agreement Report

Second Quarter
April – June 2019

Prepared for the
Technical Oversight Committee

October 25, 2019



Shark River Slough compliance results are published annually in this report when the final approved flow data for a federal water year (WY) are available. The WY2019 (October 1, 2018 – September 30, 2019) results will be published at that time.

Prepared by:
Cheol Mo, Violeta Ciuca, and Jonathan P. Madden

Compliance Assessment and Reporting Section
Water Quality Bureau
South Florida Water Management District
3301 Gun Club Road
West Palm Beach, FL 33406

PURPOSE

The South Florida Water Management District has prepared this report to provide a quarterly update to the Everglades Technical Oversight Committee on the compliance status with total phosphorus levels or limits defined in the 1991 Settlement Agreement, entered as a Consent Decree in 1992, and modified in 1995. The areas of interest in this report include the interior marsh stations in the Arthur R. Marshall Loxahatchee National Wildlife Refuge and two discharges to Everglades National Park: inflows to Shark River Slough and inflows to Taylor Slough and Coastal Basins.

CONTENTS

Executive Summary	1
Arthur R. Marshall Loxahatchee National Wildlife Refuge.....	3
Background	3
Reporting Period Update.....	3
Everglades National Park	7
Shark River Slough	7
Background	7
Reporting Period Update.....	9
Taylor Slough and Coastal Basins	11
Background	11
Reporting Period Update.....	11
Appendices	
Appendix A Monthly Total Phosphorus Concentration Data for the Arthur R. Marshall Loxahatchee National Wildlife Refuge	A-1
Appendix B Weekly Grab Total Phosphorus Concentration Data for Shark River Slough ...	B-1
Appendix C Weekly Grab Total Phosphorus Concentration Data for Taylor Slough and Coastal Basins.....	C-1
Appendix D Calculation Methods	D-1
Appendix E Document Revisions.....	E-1

TABLES

Table 1.	Second quarter 2019 TP compliance results for the Refuge, Shark River Slough, and Taylor Slough and Coastal Basins.....	1
Table 2.	Refuge TP compliance tracking	6
Table 3.	Provisional Shark River Slough TP compliance tracking.....	10
Table 4.	Taylor Slough and Coastal Basins TP compliance tracking.....	16
Table A-1.	Arthur R. Marshall Loxahatchee National Wildlife Refuge monthly TP data (in parts per billion)	A-2
Table B-1.	Weekly grab TP data (in parts per billion) for Shark River Slough.....	B-2
Table C-1.	Weekly grab TP data (in parts per billion) for Taylor Slough and Coastal Basins.	C-2

FIGURES

Figure 1.	Areas of interest	2
Figure 2.	Refuge water quality sampling and stage measurement stations.	4
Figure 3.	(A) Monthly TP geometric mean concentrations for the Refuge compared to calculated long-term levels. (B) Deviation of monthly geometric mean TP concentrations from calculated long-term levels.....	5
Figure 4.	ENP flow structures.....	8

Figure 5.	The 12-month TP FWMCs in inflows to ENP through Taylor Slough and Coastal Basins at the end of each water year compared to the 11 ppb long-term TP limit	13
Figure 6.	The 12-month TP FWMCs in inflows to ENP through Taylor Slough and Coastal Basins at the end of each month and the TP FWMC for each sampling event (Method 1).....	13
Figure 7.	Daily flows into ENP as a stacked sum of Taylor Slough (structures S332D and G737) and Coastal Basins (structure S18C).	14
Figure 8.	Daily flows from S332D pumps overlaid with stacked daily flows at downstream structures.....	14
Figure 9.	Daily flows at individual Taylor Slough and Coastal Basins structures into ENP	15
Figure 10.	Flow from Taylor Slough and Coastal Basins structures (S332D and S18C) on the day of sampling, and the corresponding TP FWMCs for individual sampling events (Method 1).	17

ACRONYMS AND ABBREVIATIONS

cfs	cubic feet per second
ENP	Everglades National Park
feet NGVD29	feet relative to the National Geodetic Vertical Datum of 1929
FWMC	flow-weighted mean concentration
kac-ft	thousand acre-feet
ppb	parts per billion
Refuge	Arthur R. Marshall Loxahatchee National Wildlife Refuge
STA	Stormwater Treatment Area
TOC	Everglades Technical Oversight Committee
TP	total phosphorus
µg/L	micrograms per liter
WCA	Water Conservation Area
WY	Water Year

EXECUTIVE SUMMARY

This report fulfills the South Florida Water Management District's reporting requirements under the 1991 Settlement Agreement, entered as a Consent Decree in 1992 and modified in 1995, for the second quarter of 2019 (April – June 2019). Total phosphorus (TP) compliance highlights for this period are summarized below for the Arthur R. Marshall Loxahatchee National Wildlife Refuge (Refuge) and inflows to Everglades National Park (ENP) (**Table 1** and **Figure 1**):

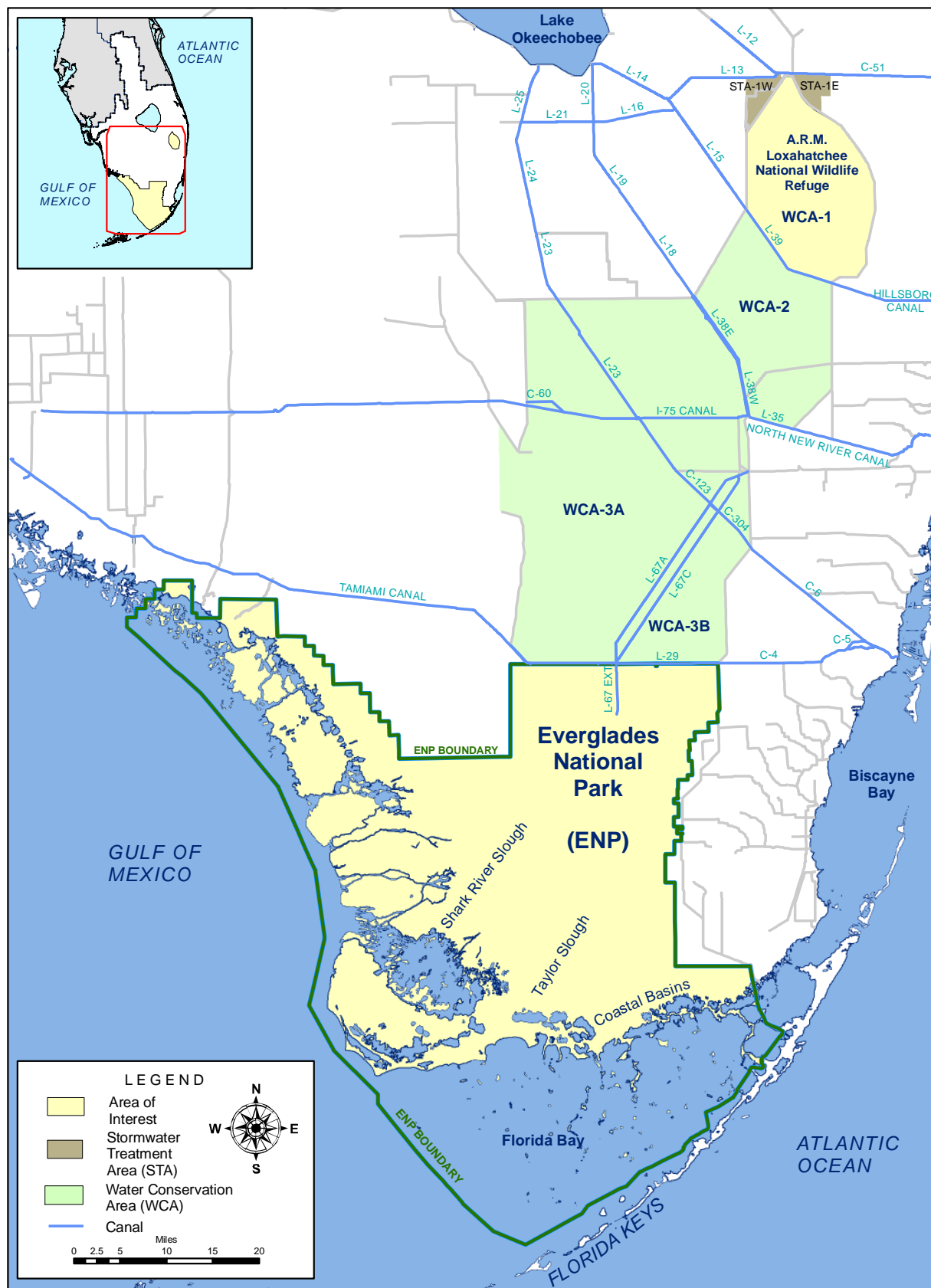
- **Refuge:** The geometric mean TP concentration was below the long-term level for April, May, and June 2019.
- **Shark River Slough:** The provisional results of two calculation methods based on provisional data are presented. The federal Water Year (WY) 2019 (October 1, 2018 – September 30, 2019) 12-month TP flow-weighted mean concentrations (FWMCs) will be published at a later date when the final approved flow data are available for the current federal WY.
- **Taylor Slough and Coastal Basins:** All three 12-month TP FWMCs calculated using Method 1, Method 2, or Method 3 were below the 12-month long-term limit of 11 parts per billion (ppb) during the second quarter of 2019.

Table 1. Second quarter 2019 TP compliance results for the Refuge, Shark River Slough, and Taylor Slough and Coastal Basins.

Month	Geometric Mean TP Concentration (ppb)	Long-Term Level (ppb)	Mean Stage (feet NGVD29)	Number of Samples	
Arthur R. Marshall Loxahatchee National Wildlife Refuge					
Apr 2019	7.4	11.0	16.24	12	
May 2019	10.4	11.5	16.16	10	
Jun 2019	8.6	12.2	16.04	9	
12-Month Period Ending	Total Flow (kac-ft)	12-Month TP FWMC (ppb)	Long-Term Limit (ppb)	Percent of Sampling Events Greater than 10 ppb	
				Guideline	Observed
Everglades National Park – Shark River Slough – <i>PROVISIONAL DATA and RESULTS</i>					
Apr 2019	863.1 (906.7)	10.0 (9.7)	8.6 (8.4)	44.7 (43.7)	37.5 (37.5)
May 2019	859.7 (902.3)	8.8 (8.5)	8.6 (8.4)	44.8 (43.8)	37.5 (37.5)
Jun 2019	790.3 (840.7)	8.9 (8.6)	9.0 (8.7)	46.6 (45.3)	41.7 (41.7)
Everglades National Park – Taylor Slough and Coastal Basins					
Apr 2019	268.5 (314.6, 314.6)	6.2 (6.0, 5.9)	11.0	53.1	1.9 (1.9, 1.9)
May 2019	249.4 (295.5, 295.5)	6.2 (5.9, 5.8)	11.0	53.1	3.8 (3.8, 3.8)
Jun 2019	237.5 (284.3, 282.7)	6.3 (6.0, 5.9)	11.0	53.1	3.8 (3.8, 3.8)

Notes:

- Key to units: ppb – parts per billion (values are actually in µg/L [micrograms per liter], which, for the purposes of this report, are equivalent to ppb); feet NGVD29 – elevation in feet relative to the National Geodetic Vertical Datum of 1929; and kac-ft – thousand acre-feet.
- Compliance for inflows to ENP (Shark River Slough, and Taylor Slough and Coastal Basins) is evaluated annually based on the 12-month TP FWMC for the federal WY ending on September 30.
- For an explanation of the multiple results for ENP inflows, see **Tables 3** and **4**.



ARTHUR R. MARSHALL LOXAHATCHEE NATIONAL WILDLIFE REFUGE

Background

The 1991 Settlement Agreement ended the Everglades lawsuit and was entered into by the federal government, the State of Florida, and the South Florida Water Management District. The subsequent Consent Decree, as modified in 1995, specified that interim and long-term TP concentration levels for the Refuge must be met by February 1, 1999, and December 31, 2006, respectively. Both the interim and long-term concentration levels vary monthly because they are calculated as a function of water stage measured at gaging stations 1-7, 1-8C, and 1-9 within the Refuge. The stage range within which the interim and long-term concentration levels are applicable is 15.42 to 17.14 feet relative to the National Geodetic Vertical Datum of 1929 (NGVD29). The monthly TP concentrations are determined from water samples collected at 14 interior marsh stations, LOX3 through LOX16 (**Figure 2**). As required in the Consent Decree, the concentrations are converted to a geometric mean, which is compared to the long-term concentration level. Monthly TP data for each station for the past 36 months are provided in **Appendix A**. The calculation methods specified in the Consent Decree are provided in **Appendix D**.

Reporting Period Update

Twelve stations were sampled in April, ten stations in May, and nine stations in June 2019. TP samples were not collected at LOX3 and LOX4 in April; LOX3, LOX5, LOX9, and LOX10 in May; or at LOX4 in June, because the water depth was less than 0.1 meter at those stations. Samples were not collected at LOX3, LOX5, LOX9, and LOX10 in June, because there were no representative contiguous water bodies at the sites due to dry conditions.

Sampling day average stages in the Refuge were 16.24, 16.16, and 16.04 feet NGVD29 in April, May, and June 2019, respectively (**Figure 3** and **Table 2**). The geometric means calculated from TP concentrations measured in water samples collected in April, May, and June were 7.4, 10.4, and 8.6 ppb, respectively, which were below the long-term levels for these months.

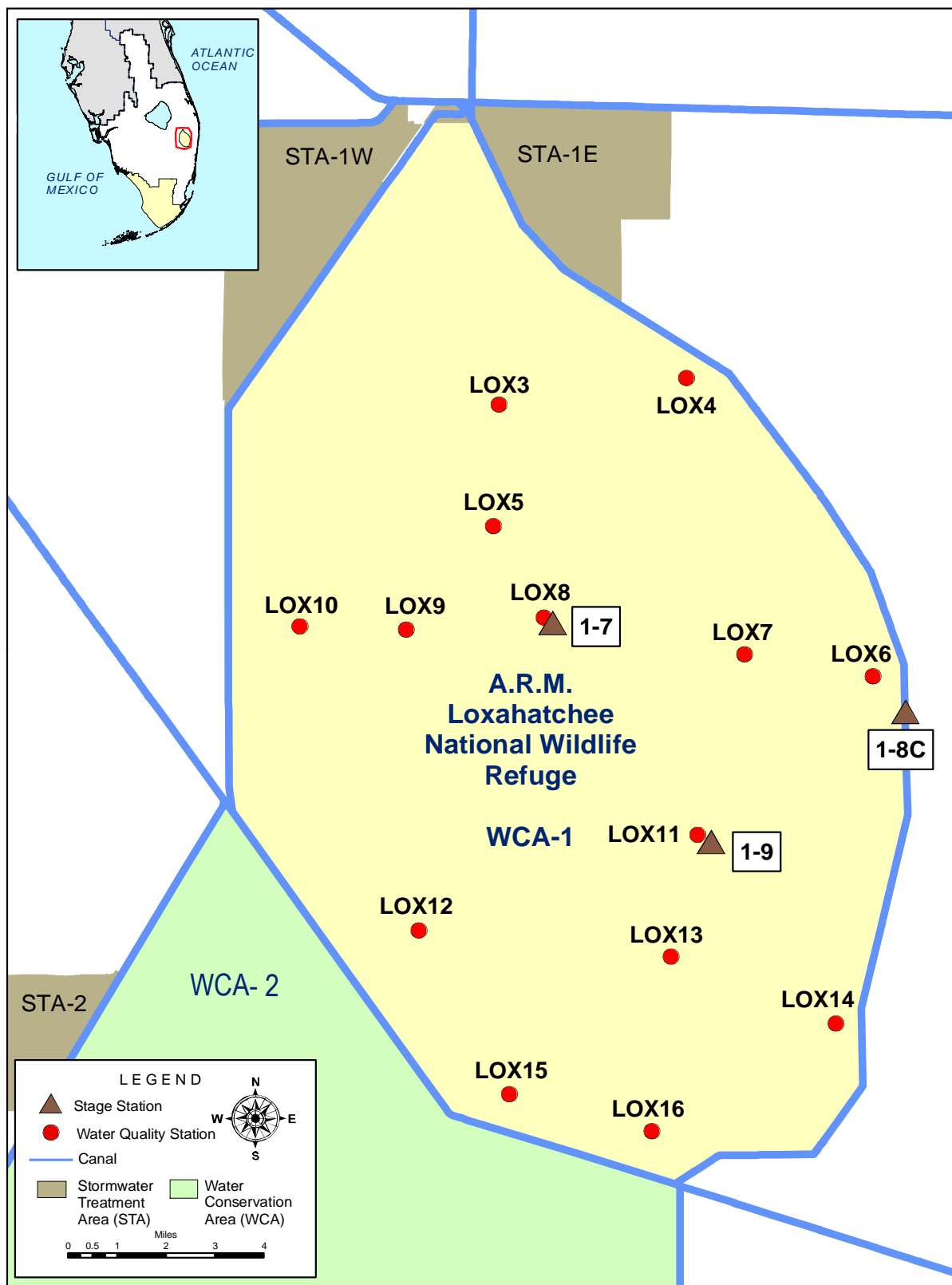


Figure 2. Refuge water quality sampling and stage measurement stations.

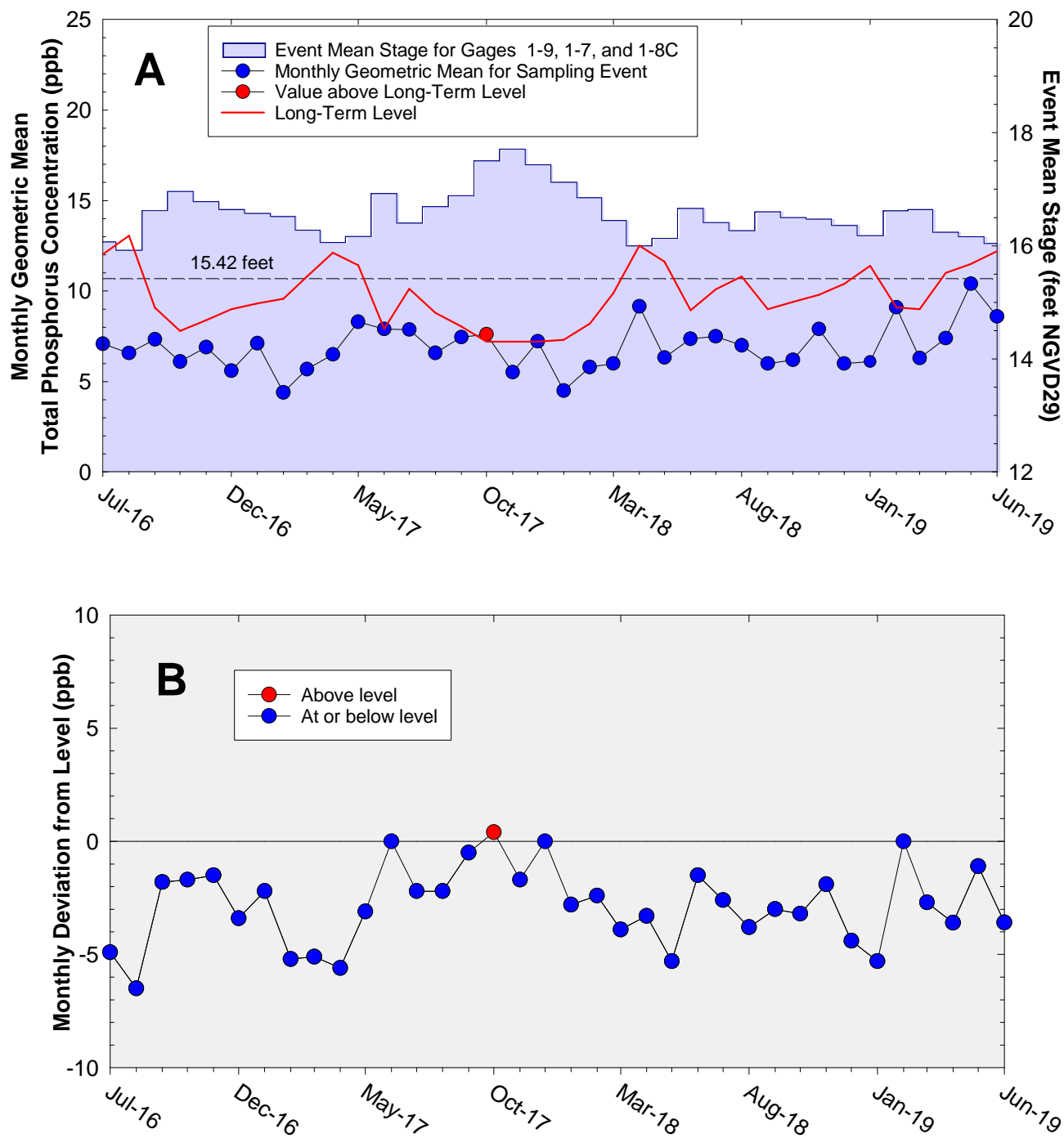


Figure 3. (A) Monthly TP geometric mean concentrations for the Refuge compared to calculated long-term levels, which are adjusted for fluctuations in stage. The geometric mean TP concentration was above the long-term level in October 2017. **(B)** Deviation of monthly geometric mean TP concentrations from calculated long-term levels. Negative values indicate that the geometric mean was lower than the long-term level.

Table 2. Refuge TP compliance tracking.

Month	Geometric Mean TP Concentration (ppb)	Long-Term Level (ppb)	Average Stage ^a (ft NGVD29)	Number of Samples
Jul-2016	7.1	12.0	16.07	13
Aug-2016	6.6	13.1	15.92	6
Sep-2016	7.3	9.1	16.62	14
Oct-2016	6.1	7.8	16.96	14
Nov-2016	6.9	8.4	16.78	14
Dec-2016	5.6	9.0	16.64	14
Jan-2017	7.1	9.3	16.57	13
Feb-2017	4.4	9.6	16.52	13
Mar-2017	5.7	10.8	16.28	12
Apr-2017	6.5	12.1	16.06	7
May-2017	8.3	11.4	16.17	13
Jun-2017	7.9	7.9	16.93	14
Jul-2017	7.9	10.1	16.40	13
Aug-2017	6.6	8.8	16.69	14
Sep-2017	7.5	8.0	16.89	13
Oct-2017	7.6	7.2	17.50	14
Nov-2017	5.5	7.2	17.71	14
Dec-2017	7.2	7.2	17.43	14
Jan-2018	4.5	7.3	17.12	14
Feb-2018	5.8	8.2	16.85	14
Mar-2018	6.0	9.9	16.45	14
Apr-2018	9.2	12.5	16.00	9
May-2018	6.3	11.6	16.13	9
Jun-2018	7.4	8.9	16.66	14
Jul-2018	7.5	10.1	16.41	13
Aug-2018	7.0	10.8	16.27	12
Sep-2018	6.0	9.0	16.64	14
Oct-2018	6.2	9.4	16.55	14
Nov-2018	7.9	9.8	16.47	12
Dec-2018	6.0	10.4	16.36	11
Jan-2019	6.1	11.4	16.18	10
Feb-2019	9.1	9.1	16.62	14
Mar-2019	6.3	9.0	16.64	14
Apr-2019	7.4	11.0	16.24	12
May-2019	10.4	11.5	16.16	10
Jun-2019	8.6	12.2	16.04	9

Notes:

- Key to units: ppb – parts per billion (values are actually in µg/L [micrograms per liter], which, for the purposes of this report, are equivalent to ppb); and feet NGVD29 – elevation in feet relative to the National Geodetic Vertical Datum of 1929.
 - Highlighted rows with bold, italicized text indicate when an excursion over the long-term level occurred.
- a. Average stage is calculated using stage elevations at stations 1-7, 1-8C, and 1-9 for a given sampling date.

EVERGLADES NATIONAL PARK

Shark River Slough

Background

The Settlement Agreement/Consent Decree (1995) specified that interim and long-term TP concentration limits for discharges into ENP (**Figure 4**) through Shark River Slough be met by October 1, 2003, and December 31, 2006, respectively. It was specified that the TP concentrations be presented as 12-month flow-weighted means. Only the TP concentrations for the WY ending September 30 are evaluated for compliance with the Consent Decree limits (**Appendix D**). The long-term TP concentration limit for inflows to Shark River Slough is represented by concentrations delivered through S12A, S12B, S12C, and S12D during the Outstanding Florida Waters baseline period of March 1, 1978, to March 1, 1979, and is adjusted for variations in flow. Inflow concentrations of TP through S12A, S12B, S12C, S12D, S333, S355A, and S355B are compared to the interim and long-term limits at the end of each WY (October 1 through September 30). The long-term limit went into effect in WY2007.

Routine monitoring was changed to weekly for all Shark River Slough sites beginning in August 2007. In accordance with Appendix A of the Consent Decree, only the every-other-week grab concentration data were used for the FWMC calculations from October 2007 forward. Weekly TP data for each station for the past 12 months are provided in **Appendix B**.

Pursuant to agreement among all Everglades Technical Oversight Committee (TOC) members at the May 14, 2013, TOC meeting, the following three changes were made to the quarterly Settlement Agreement Report: (1) publishing of the quarterly 12-month TP FWMCs for Shark River Slough is discontinued, (2) provisional quarterly 12-month TP FWMCs are posted separately to the TOC website, <https://www.sfwmd.gov/our-work/toc>, and (3) the annual 12-month TP FWMC for the WY ending on September 30 will be published once the final approved flow data for the S12A, S12B, S12C, and S12D structures become available. These changes were implemented beginning with the January - March 2013 first quarter report. Based on a vote by the TOC on July 19, 2016, provisional 12-month results are now included in the Executive Summary and Table 3 of this report.

The TOC has recognized that the S356 seepage return pump, which initiated operation under the United States Army Corps of Engineers field test in fall 2015, has the ability to discharge water that originated from the Water Conservation Areas (WCAs) to Shark River Slough. The Appendix A Subteam has been tasked with recommending an appropriate method for incorporating S356 into the compliance calculation. Since adoption of a single appropriate method has not yet been made by the TOC, this report contains results based on two calculation methods. Method 1 is TP FWMC computed as $S12s + (S333 + S355A + S355B - S334)$. Method 2 is TP FWMC computed as $S12s + (S333 + S355A + S355B + S356 - S334)$ using all flow and TP grabs on biweekly compliance sampling dates. Neither method excludes S334 flow from the total flow for long-term limit calculations.

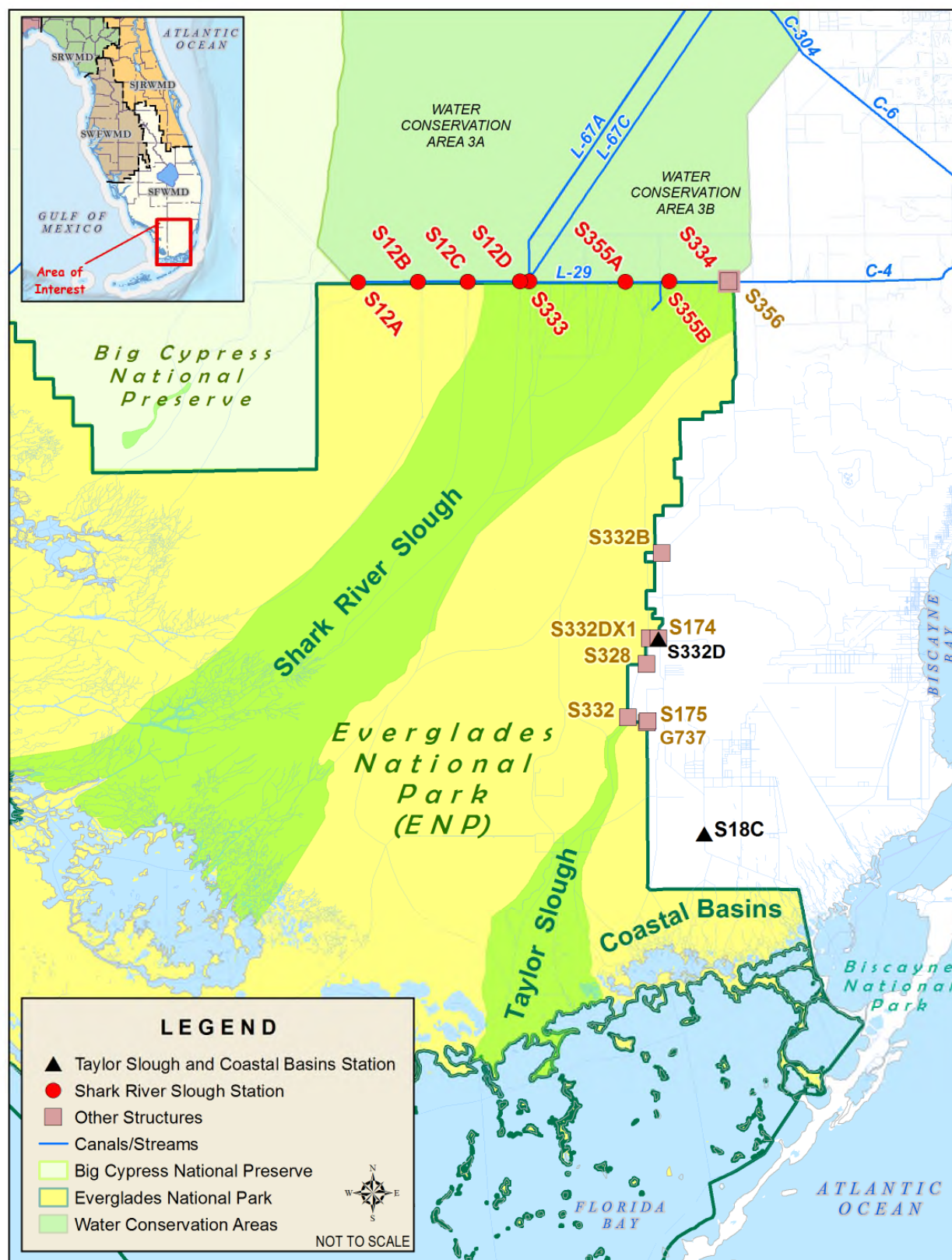


Figure 4. ENP flow structures.

Beginning with the 12-month period ending October 2015, both Method 1 and Method 2 (in parenthesis) values have been presented.

For the 12-month period ending September 30, 2018, both results of the alternative methods for the 12-month TP FWMCs were 7.3 ppb and lower than the long-term limit (both for Method 1 and Method 2 were 7.6 ppb). Therefore, inflows to Shark River Slough met the TP limit for WY2018 (October 1, 2017 – September 30, 2018).

Reporting Period Update

Table 3 presents the provisional 12-month FWMC for each month with the corresponding long-term TP concentration limits calculated using the 12-month period flow. The daily flow data from October 2018 for the S12s are provisional values.

It is anticipated that the final approved flow data for WY2019 for the S12s will be available in April 2020. The annual 12-month TP FWMC will be calculated to determine compliance with the long-term limit and will be published as a revision to the July – September 2019 third quarter report.

The water quality data for Shark River Slough are available in **Appendix B** of this report; the provisional second quarter monitoring data are posted separately to the TOC website.

Table 3. Provisional Shark River Slough TP compliance tracking.

12-Month Period	Total Flow (kac-ft)	Flow-Weighted Mean TP Concentration (ppb)	Long-Term Limit (ppb)	Percent of Sampling Events Greater than 10 ppb	
				Guideline	Observed
Aug 2015 - Jul 2016	1,250.3 (1,303.1)	7.1 (7.1)	7.6 (7.6)	40.1 (40.1)	18.2 (18.2)
Sep 2015 - Aug 2016	1,341.4 (1,397.3)	7.2 (7.2)	7.6 (7.6)	40.1 (40.1)	16.7 (16.7)
Oct 2015 - Sep 2016	1,444.5 (1,494.8)	7.2 (7.2)	7.6 (7.6)	40.1 (40.1)	15.4 (15.4)
Nov 2015 - Oct 2016	1,441.9 (1482.8)	6.8 (6.8)	7.6 (7.6)	40.1 (40.1)	11.1 (11.1)
Dec 2015 - Nov 2016	1,462.5 (1,487.6)	6.7 (6.7)	7.6 (7.6)	40.1 (40.1)	11.1 (11.1)
Jan 2016 - Dec 2016	1,344.5 (1,359.1)	6.8 (6.8)	7.6 (7.6)	40.1 (40.1)	11.5 (11.5)
Feb 2016 - Jan 2017	1,231.9 (1,235.7)	6.9 (6.9)	7.6 (7.6)	40.1 (40.1)	11.5 (11.5)
Mar 2016 - Feb 2017	1,041.5 (1,045.3)	7.3 (7.3)	7.7 (7.7)	40.5 (40.5)	11.5 (11.5)
Apr 2016 - Mar 2017	825.2 (829.0)	7.7 (7.7)	8.8 (8.8)	45.7 (45.6)	12.0 (11.5)
May 2016 - Apr 2017	681.8 (685.6)	7.8 (7.8)	9.5 (9.5)	49.6 (49.5)	16.0 (15.4)
Jun 2016 - May 2017	602.3 (606.1)	7.6 (7.6)	10.0 (9.9)	52.0 (51.9)	20.8 (20.0)
Jul 2016 - Jun 2017	648.9 (662.7)	11.9 (11.9)	9.7 (9.7)	50.6 (50.5)	25.0 (24.0)
Aug 2016 - Jul 2017	768.2 (772.0)	10.7 (10.7)	9.1 (9.1)	47.2 (47.1)	20.8 (20.0)
Sep 2016 - Aug 2017	871.9 (872.7)	10.1 (10.1)	8.5 (8.5)	44.5 (44.5)	20.8 (20.0)
Oct 2016 - Sep 2017	1,010.6 (1,014.8)	9.7 (9.7)	7.9 (7.8)	41.2 (41.1)	20.8 (20.0)
Nov 2016 - Oct 2017	1,288.7 (1,292.8)	8.7 (8.7)	7.6 (7.6)	40.1 (40.1)	20.8 (20.0)
Dec 2016 - Nov 2017	1,541.3 (1,545.3)	8.1 (8.1)	7.6 (7.6)	40.1 (40.1)	20.8 (20.0)
Jan 2017 - Dec 2017	1,757.6 (1,761.6)	7.8 (7.8)	7.6 (7.6)	40.1 (40.1)	20.8 (20.0)
Feb 2017 - Jan 2018	1,854.1 (1,858.9)	7.7 (7.7)	7.6 (7.6)	40.1 (40.1)	20.8 (20.0)
Mar 2017 - Feb 2018	1,891.4 (1,896.2)	7.7 (7.7)	7.6 (7.6)	40.1 (40.1)	20.8 (20.0)
Apr 2017 - Mar 2018	1,901.4 (1,906.1)	7.7 (7.7)	7.6 (7.6)	40.1 (40.1)	28.0 (28.0)
May 2017 - Apr 2018	1,911.8 (1,916.5)	7.7 (7.7)	7.6 (7.6)	40.1 (40.1)	34.6 (34.6)
Jun 2017 - May 2018	1,952.0 (1,957.6)	8.4 (8.4)	7.6 (7.6)	40.1 (40.1)	34.6 (34.6)
Jul 2017 - Jun 2018	1,953.5 (1,959.1)	7.1 (7.1)	7.6 (7.6)	40.1 (40.1)	30.8 (30.8)
Aug 2017 - Jul 2018	1,889.8 (1,895.4)	7.3 (7.3)	7.6 (7.6)	40.1 (40.1)	30.8 (30.8)
Sep 2017 - Aug 2018	1,844.6 (1,859.1)	7.3 (7.3)	7.6 (7.6)	40.1 (40.1)	30.8 (30.8)
Oct 2017 - Sep 2018	1,731.8 (1,761.0)	7.3 (7.3)	7.6 (7.6)	40.1 (40.1)	30.8 (30.8)
Nov 2017 - Oct 2018	1,445.2 (1,489.6)	7.8 (7.7)	7.6 (7.6)	40.1 (40.1)	30.8 (30.8)
Dec 2017 - Nov 2018	1,119.0 (1,163.5)	8.5 (8.3)	7.6 (7.6)	40.1 (40.1)	36.0 (36.0)
Jan 2018 - Dec 2018	909.6 (954.1)	9.1 (8.9)	8.4 (8.1)	43.6 (42.5)	36.0 (36.0)
Feb 2018 - Jan 2019	824.2 (867.8)	9.5 (9.3)	8.8 (8.6)	45.7 (44.6)	36.0 (36.0)
Mar 2018 - Feb 2019	814.8 (858.4)	9.7 (9.4)	8.8 (8.6)	46.0 (44.9)	40.0 (40.0)
Apr 2018 - Mar 2019	845.4 (889.0)	9.9 (9.6)	8.7 (8.5)	45.2 (44.1)	37.5 (37.5)
May 2018 - Apr 2019	863.1 (906.7)	10.0 (9.7)	8.6 (8.4)	44.7 (43.7)	37.5 (37.5)
Jun 2018 - May 2019	859.7 (902.3)	8.8 (8.5)	8.6 (8.4)	44.8 (43.8)	37.5 (37.5)
Jul 2018 - Jun 2019	790.3 (840.7)	8.9 (8.6)	9.0 (8.7)	46.6 (45.3)	41.7 (41.7)

Notes:

- Key to units: kac-feet – thousand acre feet; and ppb – parts per billion (values are actually in µg/L [micrograms per liter], which, for the purposes of this report, are equivalent to ppb).
 - Compliance is evaluated annually based on the 12-month TP FPMC for the federal WY ending on September 30. The compliance periods are shown as highlighted rows with bold, italicized text.
 - Results of both Method 1 and Method 2 are presented:
 - Method 1 (left value) is computed as S12s + (S333 + S355A + S355B - S334).
 - Method 2 (value in parentheses) is computed as S12s + (S333 + S355A + S355B + S356 - S334).
- Neither method excludes S334 flow from the total flow for long-term limit calculations.

Taylor Slough and Coastal Basins

Background

Under the Consent Decree, a single TP long-term limit of 11 ppb, to be met by December 31, 2006, was set for the two points of inflow to Taylor Slough (S332 and S175) and the inflow point to Coastal Basins (S18C) (see **Appendix C**). The 12-month TP FWMCs have consistently been lower than the long-term limit of 11 ppb.

Inflow TP concentrations to ENP through Taylor Slough and Coastal Basins are compared to the 11 ppb limit at the end of each WY using data from both the old (S175, S332, and S18C) and new (S174, S332D, and S18C) combinations of structures (**Figure 5**). The narrow bars in **Figure 5** represent the 12-month TP FWMCs from S332, S175, and S18C for WY1991 through WY2002. The wider bars for WY1999 and forward represent the new combination of structures.

TP and flow data from both sets of structures presented in prior editions of this report through December 2001 (April 2002 report) showed that, beginning in October 2000, the 12-month moving total flow for S332D, S174, and S18C was consistently greater than flow at S332, S175, and S18C. There was also a shift in TP FWMC data whereby S332D, S174, and S18C concentrations became equal to, and then consistently lower than, the concentrations at S332, S175, and S18C. These changes reflected the switch from S332 to S332D for water delivery to Taylor Slough between July 3 and July 5, 2000. Furthermore, the S174 site was plugged in September 2007, preventing any additional flow. Consequently, for WY2002 through WY2007, compliance tracking was represented by S332D, S174, and S18C. Since WY2008, S332D and S18C have represented the compliance tracking structures.

Three alternative methods were proposed for the 12-month TP FWMC compliance tracking calculation for Taylor Slough and Coastal Basins. Method 1, computed as $S332D + S18C$; Method 2, computed as $S332D + S18C + G737$; and Method 3, computed as $(S332D - S332DX1 - S328) + S328 + S18C + G737$.

Results of the alternative methods for the 12-month TP FWMCs for the 12-month period ending on September 30, 2018, were 6.2, 6.0, and 5.8 ppb for Method 1, Method 2, and Method 3, respectively, which were all lower than the 11.0 ppb long-term limit. Therefore, inflows into ENP through Taylor Slough and Coastal Basins met the TP limit for WY2018.

Reporting Period Update

Figure 6 presents the 12-month and individual sampling event TP FWMCs at the S332D and S18C structures. All TP grab sample concentrations taken on positive flow days reported for surface water monitoring at the sites were used for the compliance calculations.

The daily flows into ENP through S332D, G737, and S18C are presented in **Figure 7**. Daily flows from S332D pumps and downstream structures are presented in **Figure 8**. Daily flows at individual Taylor Slough and Coastal Basins structures into ENP are presented in **Figure 9**.

Up to September 30, 2018, S200 daily mean flow on days when G737 gates were open was used for G737 flow to estimate sampling event TP FWMC. Since October 1, 2018, G737 flow has been directly measured at G737.

For the periods ending April, May, and June 2019, the 12-month TP FWMCs for Method 1 were 6.2, 6.2, and 6.3 ppb, respectively; for Method 2, they were 6.0, 5.9, and 6.0 ppb, respectively; and for Method 3, they were 5.9, 5.8, and 5.9 ppb respectively (**Table 4**).

The Consent Decree stipulates that the percent of TP FWMCs greater than 10 ppb from each sampling event in any 12-month period must not exceed the fixed guideline of 53.1 percent (**Table 4**). There was only one sampling event with TP concentrations greater than 10 ppb for all three methods (15 ppb for Method 1 and 14 ppb for Methods 2 and 3 on September 4, 2018) during the 12-month periods ending April 2019, and two sampling events (the September 4, 2018 sampling event and 11 ppb for all three methods on May 28, 2019) during the 12-month periods ending May and June 2019.

Figure 10 shows the relationship between the daily inflows and the corresponding TP FWMCs for each sampling event for Method 1. The sampling event TP FWMCs generally remained low. The average of the sampling event TP FWMCs was 7.5 ppb for all three methods in the second quarter of 2019.

The United States Army Corps of Engineers authorized the C-111 Spreader Canal project in 1995 to restore more natural hydrologic conditions in Taylor Slough and to maintain flood protection to the east of the L-31N and C-111 canals. The original project facilities consisted of pump stations (S332B, S332C, and S332D), detention cells (Cell 1 through Cell 5), a connector cell between Cell 2 and Cell 3, a flow-way cell originating at Berm B3 of Cell 5, and four diversion structures (DS1 through DS4). DS4 is now known as S328. Upon completion of United States Army Corps of Engineers construction contracts 8, 8A, and 9 in 2018, an interconnected detention system now exists starting at the S357 discharge to the 8.5 Square Mile Area Detention Cell and continuing to the S332D Detention Area.

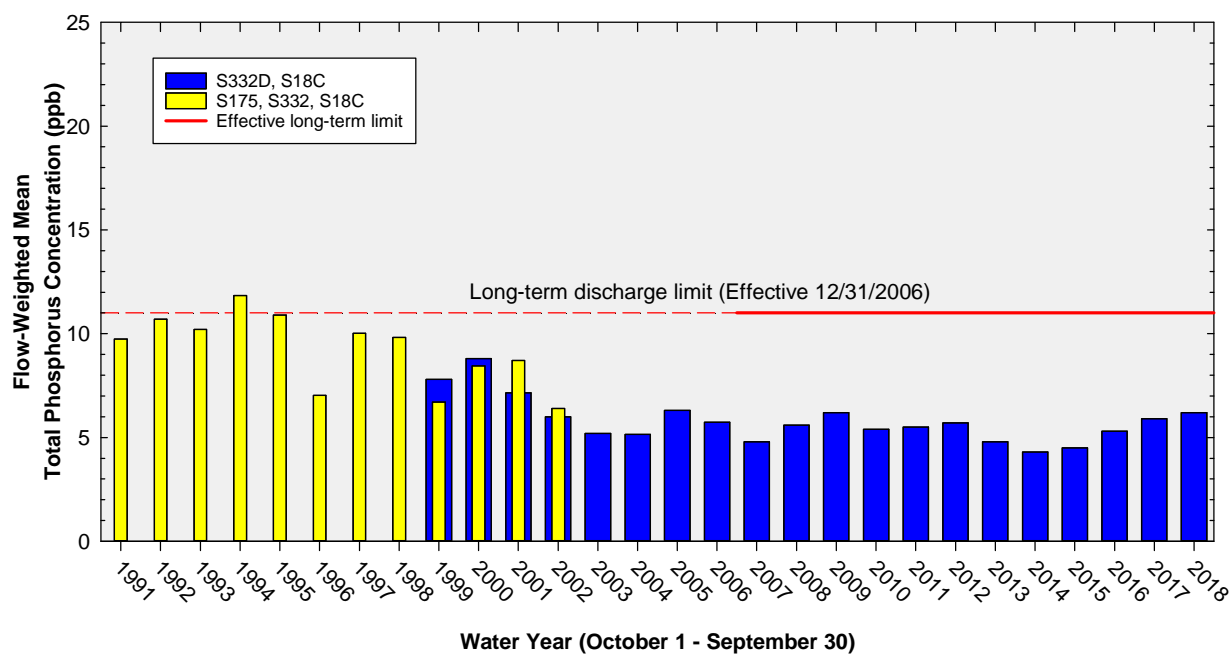


Figure 5. The 12-month TP FWMCs in inflows to ENP through Taylor Slough and Coastal Basins at the end of each WY compared to the 11 ppb long-term TP limit. Blue bars show S332D, S174, and S18C for WY1999 through WY2007, and S332D and S18C (Method 1) from WY2008 to WY2018.

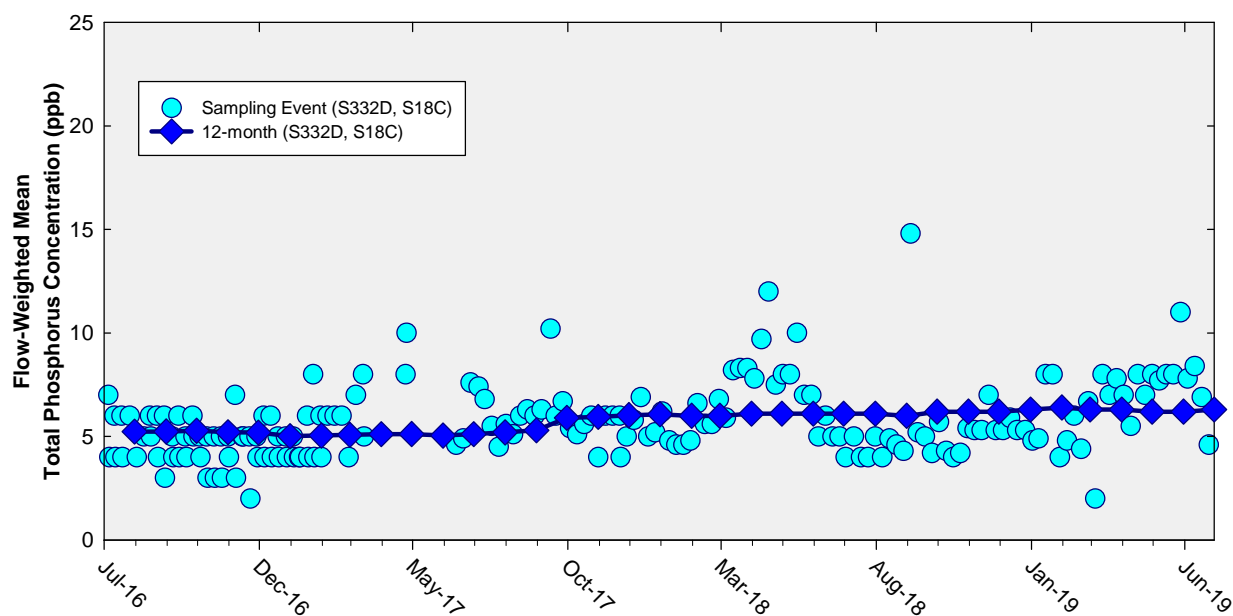


Figure 6. The 12-month TP FWMCs in inflows to ENP through Taylor Slough and Coastal Basins at the end of each month and the TP FWMC for each sampling event (Method 1).

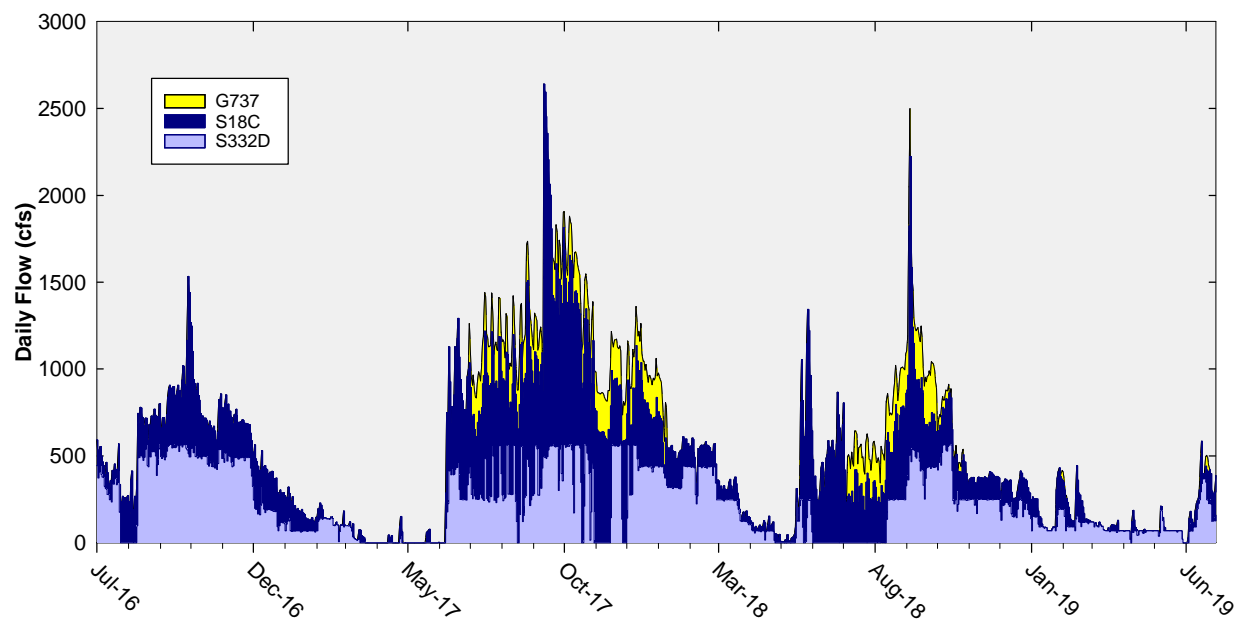


Figure 7. Daily flows into ENP as a stacked sum of Taylor Slough (structures S332D and G737) and Coastal Basins (structure S18C).

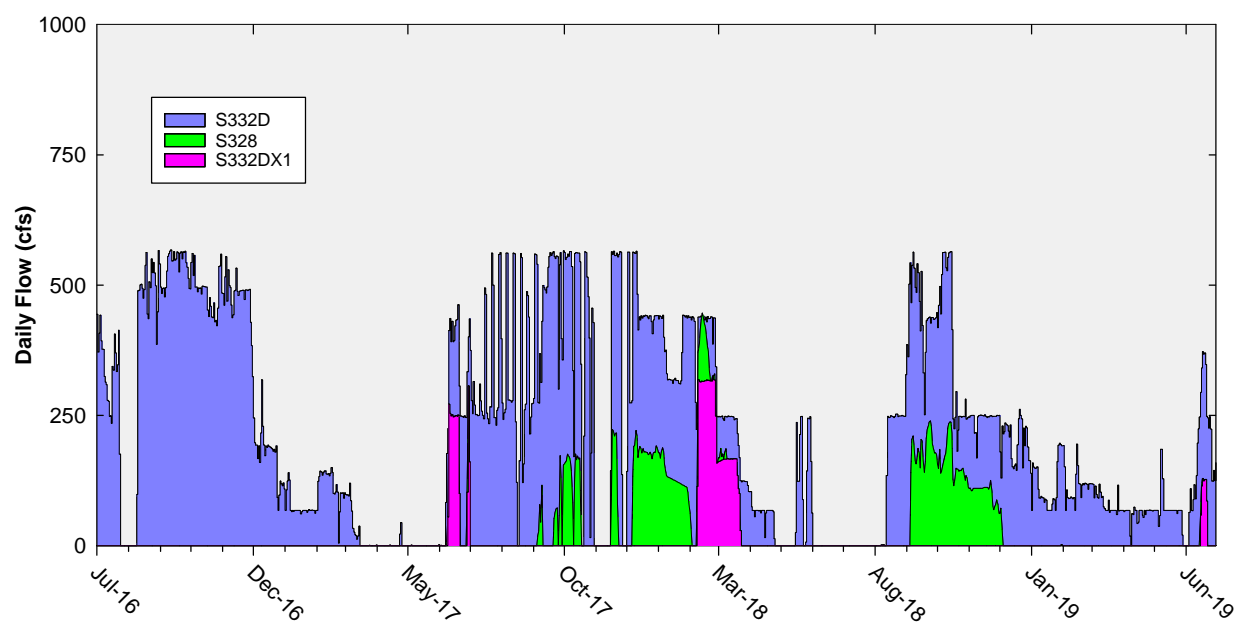


Figure 8. Daily flows from S332D pumps overlaid with stacked daily flows at downstream structures.

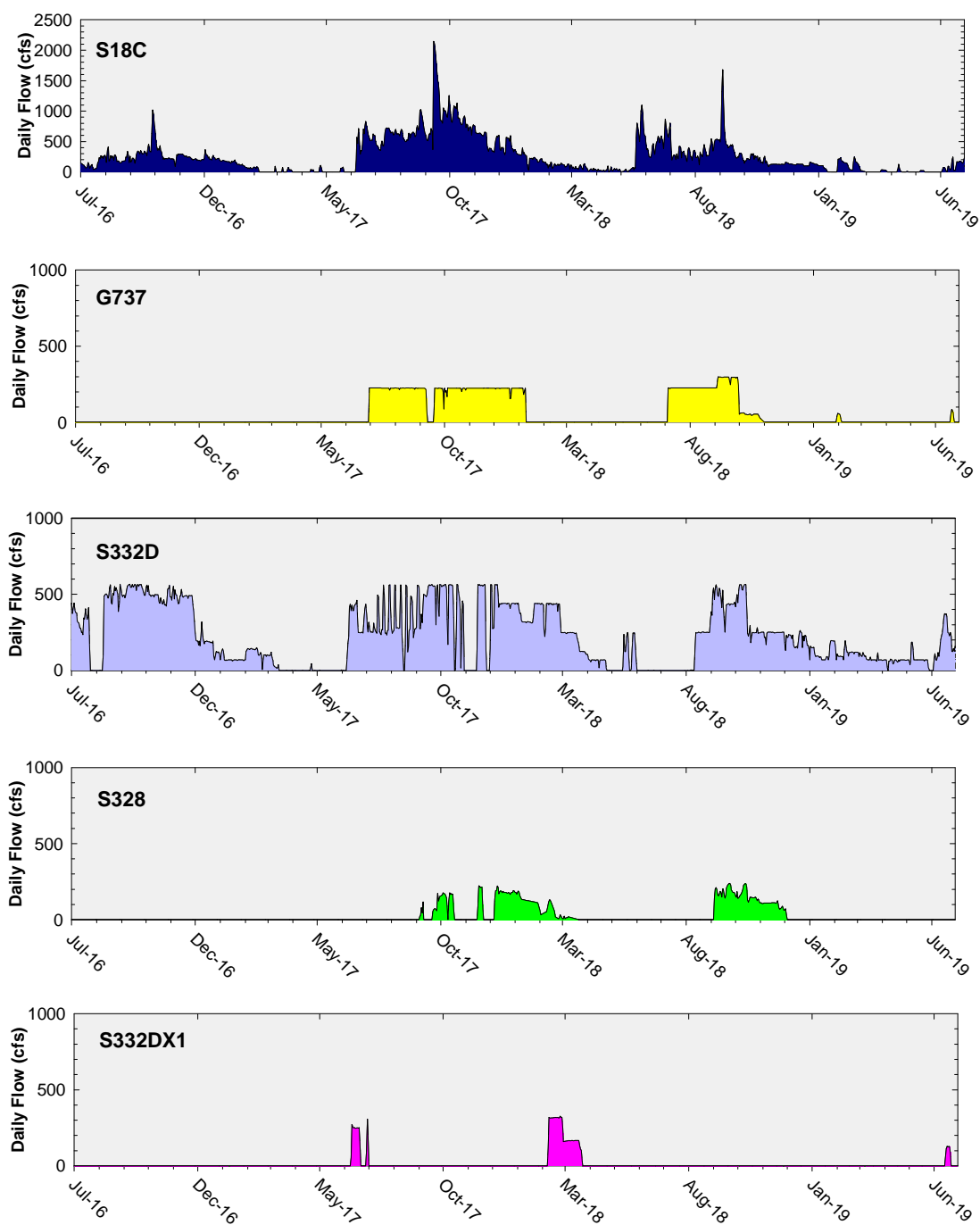


Figure 9. Daily flows at individual Taylor Slough and Coastal Basins structures into ENP. G737 flow prior to October 1, 2018, is based on S200 pump flow on days when G737 gates are open.

Table 4. Taylor Slough and Coastal Basins TP compliance tracking.

12-Month Period	Total Flow (kac-ft)	Flow-Weighted Mean TP Concentration (ppb)	Long-Term Limit (ppb)	Percent of Sampling Events Greater than 10 ppb	
				Guideline	Observed
Aug 2015 - Jul 2016	300.7	5.2	11.0	53.1	0.0
Sep 2015 - Aug 2016	330.9	5.2	11.0	53.1	0.0
Oct 2015 - Sep 2016	361.3	5.3	11.0	53.1	0.0
Nov 2015 - Oct 2016	391.0	5.2	11.0	53.1	0.0
Dec 2015 - Nov 2016	423.0	5.2	11.0	53.1	0.0
Jan 2016 - Dec 2016	399.5	5.0	11.0	53.1	0.0
Feb 2016 - Jan 2017	384.1	5.0	11.0	53.1	0.0
Mar 2016 - Feb 2017	368.1	5.1	11.0	53.1	0.0
Apr 2016 - Mar 2017	345.0	5.1	11.0	53.1	0.0
May 2016 - Apr 2017	321.7	5.1	11.0	53.1	0.0
Jun 2016 - May 2017	282.1	5.0	11.0	53.1	0.0
Jul 2016 - Jun 2017	290.9 (291.4, 285.0)	5.1 (5.1, 5.1)	11.0	53.1	0.0
Aug 2016 - Jul 2017	322.1 (336.4, 329.9)	5.2 (5.2, 5.2)	11.0	53.1	0.0
Sep 2016 - Aug 2017	346.6 (374.6, 368.2)	5.3 (5.3, 5.3)	11.0	53.1	0.0
Oct 2016 - Sep 2017	383.3 (420.1, 413.7)	5.9 (5.9, 6.0)	11.0	53.1	1.6 (1.6, 1.6)
Nov 2016 - Oct 2017	413.4 (463.8, 457.3)	5.9 (6.0, 6.0)	11.0	53.1	1.8 (1.8, 1.8)
Dec 2016 - Nov 2017	414.5 (478.2, 471.8)	6.0 (6.1, 6.0)	11.0	53.1	1.9 (1.9, 1.9)
Jan 2017 - Dec 2017	441.4 (518.5, 512.1)	6.1 (6.1, 6.0)	11.0	53.1	2.0 (2.0, 2.0)
Feb 2017 - Jan 2018	464.4 (545.5, 539.1)	6.0 (6.1, 6.0)	11.0	53.1	2.3 (2.3, 2.3)
Mar 2017 - Feb 2018	485.3 (566.4, 547.9)	6.0 (6.1, 6.0)	11.0	53.1	2.3 (2.3, 2.3)
Apr 2017 - Mar 2018	499.1 (580.1, 555.0)	6.1 (6.1, 6.0)	11.0	53.1	2.2 (2.2, 2.2)
May 2017 - Apr 2018	503.0 (584.1, 559.0)	6.1 (6.1, 6.0)	11.0	53.1	4.3 (4.3, 4.3)
Jun 2017 - May 2018	526.0 (607.0, 581.9)	6.1 (6.2, 6.1)	11.0	53.1	3.8 (3.8, 3.8)
Jul 2017 - Jun 2018	512.2 (592.9, 574.2)	6.1 (6.2, 6.0)	11.0	53.1	3.8 (3.8, 3.8)
Aug 2017 - Jul 2018	476.3 (555.2, 536.5)	6.1 (6.0, 5.9)	11.0	53.1	3.7 (3.7, 3.7)
Sep 2017 - Aug 2018	448.6 (527.5, 508.8)	6.0 (5.9, 5.8)	11.0	53.1	3.8 (3.8, 3.8)
Oct 2017 - Sep 2018	413.3 (500.4, 481.7)	6.2 (6.0, 5.8)	11.0	53.1	3.8 (3.8, 3.8)
Nov 2017 - Oct 2018	371.5 (447.8, 429.2)	6.2 (6.0, 5.8)	11.0	53.1	3.8 (3.8, 3.8)
Dec 2017 - Nov 2018	350.5 (413.5, 394.8)	6.2 (6.0, 5.8)	11.0	53.1	3.8 (3.8, 3.8)
Jan 2018 - Dec 2018	319.4 (368.9, 350.2)	6.3 (6.0, 5.8)	11.0	53.1	3.8 (3.8, 3.8)
Feb 2018 - Jan 2019	296.5 (342.4, 323.7)	6.4 (6.1, 5.9)	11.0	53.1	3.8 (3.8, 3.8)
Mar 2018 - Feb 2019	279.6 (325.8, 319.1)	6.3 (6.1, 5.9)	11.0	53.1	3.8 (3.8, 3.8)
Apr 2018 - Mar 2019	269.1 (315.3, 315.3)	6.3 (6.0, 5.9)	11.0	53.1	3.8 (3.8, 3.8)
May 2018 - Apr 2019	268.5 (314.6, 314.6)	6.2 (6.0, 5.9)	11.0	53.1	1.9 (1.9, 1.9)
Jun 2018 - May 2019	249.4 (295.5, 295.5)	6.2 (5.9, 5.8)	11.0	53.1	3.8 (3.8, 3.8)
Jul 2018 - Jun 2019	237.5 (284.3, 282.7)	6.3 (6.0, 5.9)	11.0	53.1	3.8 (3.8, 3.8)

Notes:

- Key to units: kac-feet – thousand acre feet; ppb – parts per billion (values are actually in µg/L [micrograms per liter], which, for the purposes of this report, are equivalent to ppb).
- Compliance is evaluated annually based on the 12-month TP FPMC for the federal WY ending on September 30. The compliance periods are shown as highlighted rows with bold, italicized text.
- From the 12-month period ending June 2017, results of Method 1, Method 2, and Method 3 are presented:
 - Method 1 (left value) is computed as S332D + S18C.
 - Method 2 (first value in parentheses) is computed as S332D + S18C + G737.
 - Method 3 (second value in parentheses) is computed as (S332D - S332DX1 - S328) + S328 + S18C + G737.

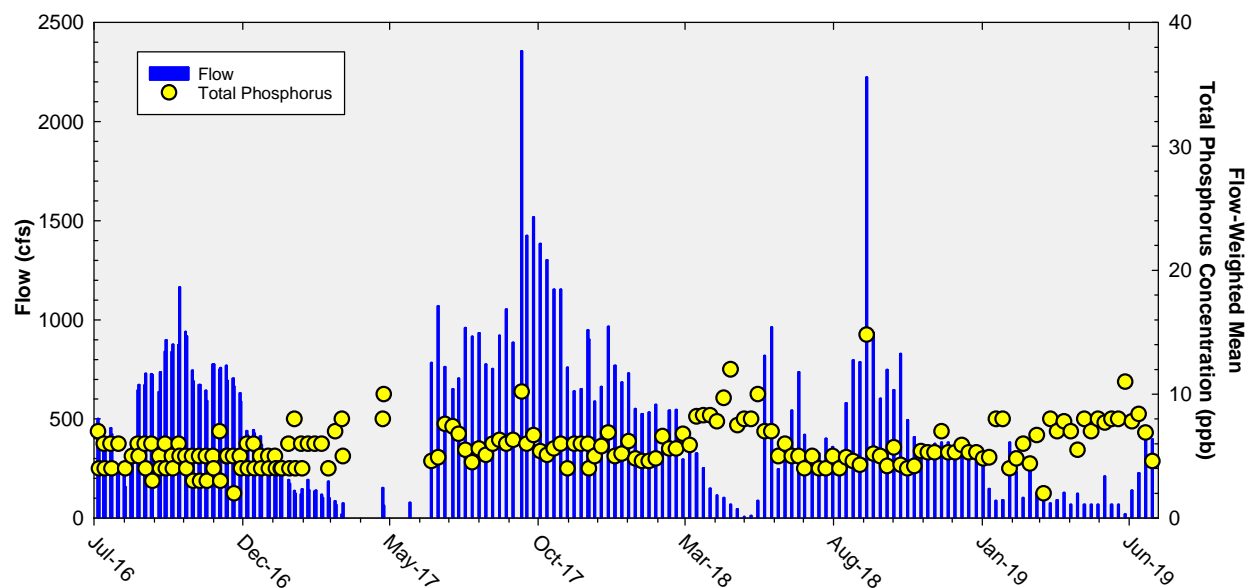


Figure 10. Flow from Taylor Slough and Coastal Basins structures (S332D and S18C) on the days of sampling, and the corresponding TP FWMCs for individual sampling events (Method 1).

APPENDIX A

MONTHLY TOTAL PHOSPHORUS CONCENTRATION DATA FOR THE ARTHUR R. MARSHALL LOXAHATCHEE NATIONAL WILDLIFE REFUGE

TP concentration data used in this report can be directly retrieved from the South Florida Water Management District's DBHYDRO database by copying and pasting the following link into the address field of a web browser:

[http://my.sfwmd.gov/dbhydroplsql/water_quality_data.report_full?v_where_clause=where+station_id+like+\('LOX%25'\)+and+station_id+not+like+\('LOXA%25'\)+and+test_number+=+25+and+date_collected+>='01-Apr-2019'+and+date_collected+<+'01-JUL-2019'+and+sample_type_new+=+'SAMP'&v_target_code=file_csv](http://my.sfwmd.gov/dbhydroplsql/water_quality_data.report_full?v_where_clause=where+station_id+like+('LOX%25')+and+station_id+not+like+('LOXA%25')+and+test_number+=+25+and+date_collected+>='01-Apr-2019'+and+date_collected+<+'01-JUL-2019'+and+sample_type_new+=+'SAMP'&v_target_code=file_csv)

The link above only generates data that have not been qualified. Qualified water quality data must be retrieved interactively via the DBHYDRO browser.

Stage data for stations 1-7, 1-8C, and 1-9 from the reporting quarter can be retrieved by copying and pasting the following link into the address field of a web browser:

http://my.sfwmd.gov/dbhydroplsql/web_io.report_process?v_period=uspec&v_start_date=20190401&v_end_date=20190630&v_report_type=format7&v_target_code=file_csv&v_run_mode=onLine&v_js_flag=Y&v_dbkey=FE775/FE776/FE777

Table A-1. Arthur R. Marshall Loxahatchee National Wildlife Refuge monthly TP data (in parts per billion).

Month-Year	LOX3	LOX4	LOX5	LOX6	LOX7	LOX8	LOX9	LOX10	LOX11	LOX12	LOX13	LOX14	LOX15	LOX16
Jul-2016	8	12	10	6	6	8	8	7	7	6	7	5	5	---
Aug-2016	---	---	---	---	---	---	---	---	5	6	7	6	8	8
Sep-2016	10	11	8	5	6	6	9	10	7	8	6	5	6	9
Oct-2016	6	8	4	6	6	5	7	9	5	10	5	6	4	7
Nov-2016	7	12	11	5	8	7	7	14	5	6	5	5	5	6
Dec-2016	7	7	5	4	5	7	5	6	5	5	5	6	5	8
Jan-2017	8	9	---	5	7	10	7	7	6	7	8	6	6	8
Feb-2017	5	4	---	4	5	5	5	4	4	5	3	4	4	6
Mar-2017	---	8	---	5	7	7	10	8	4	5	5	3	4	6
Apr-2017	---	---	---	6	---	---	---	---	7	7	7	7	5	7
May-2017	9	11	---	8	8	9	10	11	8	7	7	7	6	9
Jun-2017	12	15	10	6	11	10	9	8	7	5	7	7	5	5
Jul-2017	10	8	10	4	8	---	13	9	6	7	7	8	7	9
Aug-2017	6	8	8	5	6	6	7	6	6	6	7	7	7	8
Sep-2017	---	10	9	8	7	8	8	8	8	6	6	7	7	6
Oct-2017	7	11	7	6	10	10	9	9	6	8	7	6	6	7
Nov-2017	5	9	5	5	6	8	6	6	5	5	5	5	4	5
Dec-2017	6	6	9	6	7	13	9	9	7	8	6	6	6	6
Jan-2018	4	6	5	4	6	6	5	5	5	4	3	4	3	4
Feb-2018	5	6	6	4	8	8	7	7	6	5	5	6	4	6
Mar-2018	6	5	5	8	5	8	5	6	6	6	6	7	5	7
Apr-2018	---	---	---	7	12	12	---	---	11	9	8	9	7	9
May-2018	---	6	---	5	6	---	---	---	6	9	5	8	6	7
Jun-2018	8	8	9	7	6	12	7	8	6	6	7	8	6	7
Jul-2018	6	10	8	7	8	8	7	---	10	6	6	8	8	7
Aug-2018	6	9	---	7	6	6	5	---	7	9	9	8	6	8
Sep-2018	4	7	4	6	7	7	4	9	5	7	6	6	7	7
Oct-2018	7	8	6	5	8	7	6	6	6	7	5	6	5	6
Nov-2018	---	8	---	8	6	6	12	10	8	9	8	7	7	8
Dec-2018	---	8	---	5	4	10	---	7	6	6	6	5	6	5
Jan-2019	---	8	---	4	6	12	---	---	6	6	6	6	4	6
Feb-2019	16	10	18	7	11	13	10	10	7	7	7	6	6	8
Mar-2019	8	7	7	4	6	9	8	7	6	5	5	6	5	7
Apr-2019	---	---	8	6	7	12	21	6	7	6	6	6	5	7
May-2019	---	9	---	14	9	20	---	---	10	8	10	9	10	9
Jun-2019	---	---	---	8	9	19	---	---	9	6	8	9	7	7

Notes:

--- indicates sample was not collected due to insufficient water depth.

APPENDIX B

WEEKLY GRAB TOTAL PHOSPHORUS CONCENTRATION DATA FOR SHARK RIVER SLOUGH

TP concentration data used in this report can be directly retrieved from the South Florida Water Management District's DBHYDRO database by copying and pasting the following link into the address field of a web browser:

[http://my.sfwmd.gov/dbhydroplsql/water_quality_data.report_full?v_where_clause=where+station_id+in+\('S12A','S12B','S12C','S12D','S333','S355A','S355B','S356-334'\)+and+test_number+=+25+and+collect_method+=+'G'+and+date_collected+>='01-APR-2019'+and+date_collected+<='01-JUL-2019'+and+sample_type_new+=+'SAMP'&v_target_code=file_csv](http://my.sfwmd.gov/dbhydroplsql/water_quality_data.report_full?v_where_clause=where+station_id+in+('S12A','S12B','S12C','S12D','S333','S355A','S355B','S356-334')+and+test_number+=+25+and+collect_method+=+'G'+and+date_collected+>='01-APR-2019'+and+date_collected+<='01-JUL-2019'+and+sample_type_new+=+'SAMP'&v_target_code=file_csv)

The link only generates data that have not been qualified. Qualified water quality data must be retrieved interactively via the DBHYDRO browser.

The provisional daily mean flow data for stations S12A, S12B, S12C, S12D, S355A, S355B, S355B Temporary Pumps, and S356 and the "Preferred DBKEY" daily mean flow data for stations S333 and S334, during the reporting quarter can be retrieved by copying and pasting the following link into the address field of a web browser:

http://my.sfwmd.gov/dbhydroplsql/web_io.report_process?v_period=uspec&v_start_date=20190401&v_end_date=20190630&v_report_type=format7&v_target_code=file_csv&v_run_mode=onLine&v_js_flag=Y&v_dbkey=03620/03626/03632/03638/MQ895/MQ896/AM173/64136/15042/FB752

The "Preferred DBKEY" daily mean flow data for S12A, S12B, S12C, and S12D structures will be available for retrieval upon completion of the final approved flow data (expected April 2020).

Table B-1. Weekly grab TP data (in parts per billion) for Shark River Slough.

Date	S12A	S12B	S12C	S12D	S333	S355A	S355B	S356	Remarks
07/02/2018	14	---	11	8	8	---	---	11	N/A
07/09/2018	9	9	7	9	7	10	10	9	Compliance date
07/16/2018	7	5	9	9	8	---	---	10	N/A
07/23/2018	6	7	8	9	10	---	---	8	Compliance date
07/30/2018	6	5	7	8	11	---	---	8	N/A
08/06/2018	6	6	7	8	8	7	6	8	Compliance date
08/13/2018	6	6	7	8	7	---	---	8	N/A
08/20/2018	7	7	8	NOB	8	---	6	7	Compliance date
08/27/2018	G	G	G	G	G	---	---	G	N/A
09/04/2018	6	4	6	7	6	5	5	4	Compliance date
09/10/2018	4	5	6	8	7	---	---	5	N/A
09/17/2018	6	4	6	8	7	---	---	4	Compliance date
09/24/2018	5	4	5	7	6	---	---	6	N/A
10/01/2018	5	---	5	7	7	7	10	4	Compliance date
10/08/2018	11	---	6	8	8	---	---	6	N/A
10/15/2018	10	---	7	8	7	---	6	6	Compliance date
10/22/2018	11	---	6	8	9	---	---	5	N/A
10/30/2018	11	---	---	---	9	---	---	9	Compliance date
11/05/2018	10	---	---	---	10	---	---	9	N/A
11/13/2018	42	---	---	---	13	8	9	8	Compliance date
11/19/2018	14	---	---	---	12	---	---	13	N/A
11/26/2018	16	---	---	8	11	---	---	13	Compliance date
12/03/2018	10	13	11	7	7	---	---	12	N/A
12/11/2018	14	---	---	---	9	8	6	11	Compliance date
12/17/2018	14	---	---	7	9	---	---	12	N/A
12/27/2018	19	---	---	---	8	---	---	11	Compliance date
01/02/2019	19	---	---	---	8	---	---	13	N/A
01/07/2019	20	---	---	---	10	13	12	12	Compliance date
01/14/2019	15	---	---	---	10	---	---	16	N/A
01/22/2019	17	---	---	---	10	---	---	15	Compliance date
01/28/2019	19	---	---	---	9	---	---	15	N/A
02/04/2019	16	---	---	---	10	---	---	14	Compliance date
02/12/2019	22	---	---	---	10	---	---	18	N/A
02/18/2019	23	---	---	---	11	11	13	16	Compliance date
02/25/2019	21	---	---	---	16	---	---	16	N/A
03/05/2019	18	---	---	---	17	---	---	14	Compliance date
03/11/2019	15	---	---	---	12	---	---	14	N/A
03/18/2019	14	---	---	---	12	17	19	19	Compliance date
03/25/2019	16	---	---	---	12	13	14	19	N/A
04/01/2019	30	---	---	---	15	---	---	18	Compliance date
04/08/2019	18	---	---	---	14	---	---	14	N/A
04/15/2019	18	---	---	---	12	---	---	16	Compliance date
04/22/2019	24	---	---	---	12	---	---	16	N/A
04/29/2019	26	---	---	---	12	21	29	16	Compliance date
05/06/2019	19	---	---	---	13	---	---	24	N/A
05/13/2019	18	---	---	---	12	---	---	14	Compliance date
05/20/2019	21	---	---	---	31	---	---	14	N/A
05/28/2019	24	---	---	---	19	20	28	17	Compliance date
06/03/2019	31	---	---	---	13	---	---	19	N/A
06/10/2019	25	---	---	---	16	---	---	17	Compliance date
06/17/2019	20	---	---	---	9	---	---	8	N/A
06/24/2019	16	---	---	---	19	13	22	7	Compliance date

Notes:

--- indicates water sample was not collected.

"Compliance date" indicates biweekly sampling date for Consent Decree calculation.

"N/A" indicates sampling data presented for informational purposes only.

NOB: No Bottle; sampling area inaccessible due to large floating mats of vegetation. No clear, representative area to collect sample. No sample collected.

G: Analyte was detected at or above the method detection limit in both the sample and the associated field blank, equipment blank, or trip blank, and the blank value was greater than 10% of the associated sample value.

APPENDIX C

WEEKLY GRAB TOTAL PHOSPHORUS CONCENTRATION DATA FOR TAYLOR SLOUGH AND COASTAL BASINS

TP concentration data used in this report can be directly retrieved from the South Florida Water Management District's DBHYDRO database by copying and pasting the following link into the address field of a web browser:

[http://my.sfwmd.gov/dbhydroplsql/water_quality_data.report_full?v_where_clause=where+station_id+in+\('S332DX','S18C','S328','G737'\)+and+test_number+=+25+and+collect_method+=+'G'+and+date_collected+>='01-APR-2019'+and+date_collected+<='01-JUL-2019'+and+sample_type_new+=+'SAMP'&v_target_code=file_csv](http://my.sfwmd.gov/dbhydroplsql/water_quality_data.report_full?v_where_clause=where+station_id+in+('S332DX','S18C','S328','G737')+and+test_number+=+25+and+collect_method+=+'G'+and+date_collected+>='01-APR-2019'+and+date_collected+<='01-JUL-2019'+and+sample_type_new+=+'SAMP'&v_target_code=file_csv)

The link only generates data that have not been qualified. Qualified water quality data must be retrieved interactively via the DBHYDRO browser.

The "Preferred DBKEY" daily mean flow data for stations at Taylor Slough and the Coastal Basins (S332D and S18C) and source DBKEY flow data (S328 and G737) during the reporting quarter can be retrieved by copying and pasting the following link into the address field of a web browser:

http://my.sfwmd.gov/dbhydroplsql/web_io.report_process?v_period=uspec&v_start_date=20190401&v_end_date=20190630&v_report_type=format7&v_target_code=file_csv&v_run_mode=onLine&v_js_flag=Y&v_dbkey=15760/TA413/AN558/AN674

G737 flow prior to October 1, 2018, is based on S200 pump flow on days when G737 gates are open. The daily flow data for S200 can be assessed using the following link:

http://my.sfwmd.gov/dbhydroplsql/web_io.report_process?v_period=uspec&v_start_date=20190401&v_end_date=20190630&v_report_type=format7&v_target_code=file_csv&v_run_mode=onLine&v_js_flag=Y&v_dbkey=AI315

The break point gate opening data can be assessed using the following link:

http://my.sfwmd.gov/dbhydroplsql/web_io.report_process?v_period=uspec&v_start_date=20190401&v_end_date=20190630&v_report_type=format7&v_target_code=file_csv&v_run_mode=onLine&v_js_flag=Y&v_dbkey=AN670/AN671/AN672

Table C-1. Weekly grab TP data (in parts per billion) for Taylor Slough and Coastal Basins.

Date	S332DX	S18C	S328	G737	Date	S332DX	S18C	S328	G737
07/02/2018	5	4	J	--	01/02/2019	6	3	20	5
07/10/2018	5	5	J	5	01/08/2019	6	3	24	4
07/17/2018	5	4	J	5	01/15/2019	8	4	22	4
07/24/2018	5	4	23	4	01/22/2019	8	4	J	4
07/31/2018	5	5	J	4	01/29/2019	6	2	J	4
08/07/2018	4	4	J	5	02/05/2019	6	4	J	4
08/14/2018	6	4	19	5	02/12/2019	7	4	J	4
08/21/2018	6	4	14	4	02/19/2019	6	3	J	5
08/28/2018	5	4	10	4	02/26/2019	7	3	J	4
09/04/2018	8	17	85	6	03/05/2019	2	3	J	3
09/11/2018	6	4	3	3	03/12/2019	8	3	J	--
09/18/2018	5	5	4	5	03/19/2019	8	4	22	--
09/25/2018	5	3	3	4	03/26/2019	8	6	17	--
10/02/2018	6	5	4	4	04/02/2019	7	4	J	--
10/09/2018	5	3	3	4	04/09/2019	8	3	J	--
10/16/2018	4	4	4	4	04/16/2019	8	4	J	--
10/23/2018	5	3	3	2	04/23/2019	7	5	J	--
10/30/2018	6	4	4	4	04/30/2019	8	5	J	--
11/06/2018	6	4	3	5	05/07/2019	8	5	J	--
11/13/2018	6	4	3	4	05/14/2019	8	6	J	--
11/20/2018	7	G	6	G	05/21/2019	8	6	J	--
11/27/2018	6	4	7	4	05/28/2019	11	7	J	--
12/04/2018	6	4	10	4	06/04/2019	10	6	84	--
12/11/2018	7	4	11	3	06/11/2019	10	6	62	8
12/18/2018	6	4	18	4	06/18/2019	7	6	29	4
12/26/2018	6	4	10	3	06/25/2019	5	4	30	6

Notes:

-- indicates water sample was not collected.

G indicates that analyte was detected at or above the method detection limit in both the sample and the associated field blank, equipment blank, or trip blank, and the blank value was greater than 10 percent of the associated sample value.

J indicates the sample was collected from a disconnected pool and was not representative of the surrounding water body. The surrounding area was dry.

APPENDIX D

CALCULATION METHODS

Long-Term Marsh Concentration Levels for Loxahatchee National Wildlife Refuge

Long-Term Marsh Concentration Levels:

$$C = 10.7172 - 0.541156S + 1.372\sqrt{7.5819 - 0.9310S + 0.02902216S^2}$$

Terms:

C = the natural log of the geometric mean total phosphorus concentration across 14 marsh stations.

S = average stage measured at gauges CA1-9, CA1-7, and CA1-8C on sampling date (feet).

This equation is applicable over a stage range of 15.42 to 17.14 feet. If the stage on any sampling date exceeds 17.14 feet, a stage of 17.14 feet should be used in calculating the long-term concentration levels. The equation shall not apply to dates when the average stage is less than 15.42 feet.

Discharge Limits and Outstanding Florida Water (OFW) Standards for Shark River Slough**Interim Discharge Limit:**

$$C = 11.16 - 0.00465Q + 1.397\sqrt{6.377 - 0.00591Q + 0.00000436Q^2}$$

Long-Term Discharge Limit & OFW Standard:

$$C = 11.38 - 0.00538Q + 1.397\sqrt{2.493 - 0.00231Q + 0.00000170Q^2}$$

Frequency Exceedance:

$$F = 48.411 - 0.02896Q + 1.397\sqrt{330.1 - 0.3071Q + 0.0002254Q^2}$$

Terms:

Water Year = October through September

Q = total inflow to Shark River Slough for water year, S-12s + S-333 + any additional inflow from the WCAs established in the future, thousand acre-ft/yr (kac-ft/yr).

C = limit on maximum flow-weighted-mean inflow concentration for any Water Year, composite of all inflows to Shark Slough (ppb).

F = exceedance for maximum frequency (percent) of inflow concentrations exceeding 10 ppb, computed from the time series of concentrations composited across all inflow structures on each sampling date with positive flow in a given Water Year.

The range of flow (Q) used in deriving the limits is 117 to 1,061 kac-ft/yr. If the total flow for any water year exceeds 1,061 kac-ft/yr, a flow of 1,061 kac-ft/yr should be used in calculating the discharge limits.

(1991 Settlement Agreement entered as a Consent Decree in 1992 and modified in 1995, Exhibit B, Appendix A, Attachment I, page A-5)

Discharge Limits and OFW Standards for Taylor Slough and Coastal Basins

Long-Term Flow-Weighted Discharge Limit & OFW Standard = 11.0 ppb

Frequency Exceedance:

Frequency of values > 10 ppb must be less than 53.1%.

Terms:

Limits are defined on a Water Year basis, October through September.

Basin flow is the total flow through structures S-332, S-175, S-18C, plus any new release points from this basin established in the future, thousand acre-ft/yr (kac-ft/yr).

Limits apply to the flow-weighted-mean concentration for any Water Year, composite of all inflows to Taylor Slough (S-332) and Coastal Basin (S-18C).

Frequency exceedance is the exceedance for maximum frequency (percent) of inflow concentrations exceeding 10 ppb, computed from the time series of concentrations composited across all inflow structures on each sampling date with positive flow in a given Water Year.

(1991 Settlement Agreement entered as a Consent Decree in 1992 and modified in 1995, Exhibit B, Appendix A, Attachment II, page A-6)

APPENDIX E

DOCUMENT REVISIONS

Table E-1. Revisions to this report since initial publication.

Page/Date	Original	Revision