



# Shark River Slough Final WY2024 Annual Compliance Results

**Chelsea Qiu, P.E., Ph.D.**

Lead Engineer

Compliance Assessment & Reporting Section

Water Quality Bureau

Technical Oversight Committee

June 24, 2025



[sfwmd.gov](http://sfwmd.gov)

# Shark River Slough

## TP Concentration Compliance Tracking

12-Month Period	Total Flow (kac-ft)	Long-Term Limit (ppb) <i>Effective 12/31/2006</i>	Flow-Weighted Mean TP Concentration (ppb)	Percent of Sampling Events Greater than 10 ppb	
				Guideline (%)	Observed (%)
3rd Quarter 2024 Compliance Tracking					
Aug 2023 - Jul 2024	1,531.0	7.6	7.9	40.1	20.0
Sep 2023 - Aug 2024	1,534.3	7.6	8.0	40.1	20.0
Oct 2023 - Sep 2024	1,521.8	7.6	8.0	40.1	20.0

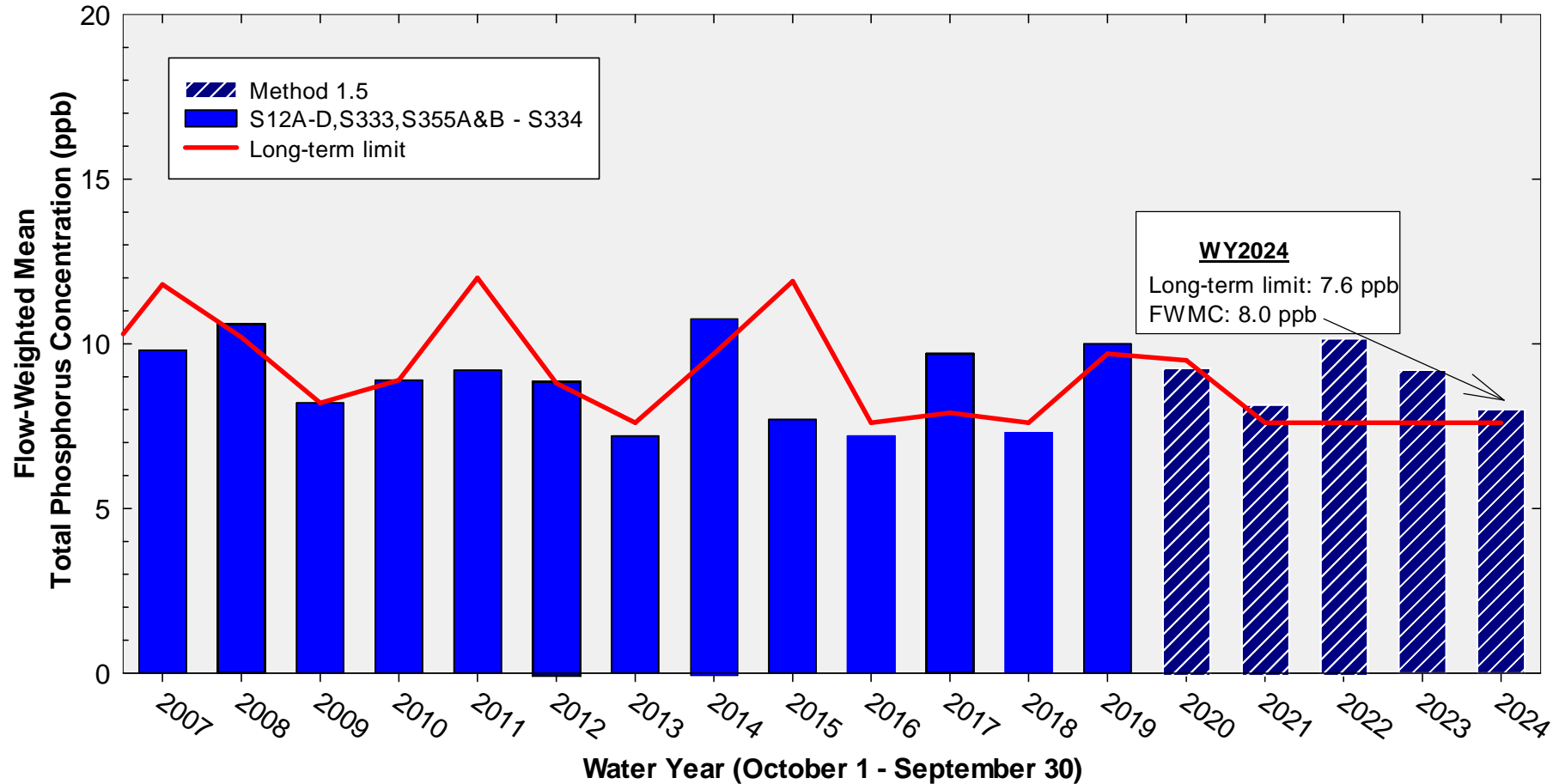
**Shark River Slough Final Result:**

**FWMC computed as S12s + [S333 + S333N + S355A + S355B + minimum of (S356, S335) – S334] using all flow and TP grabs on bi-weekly compliance sampling dates.**

**S334 flow was not excluded from the flow for long-term limit calculations.**

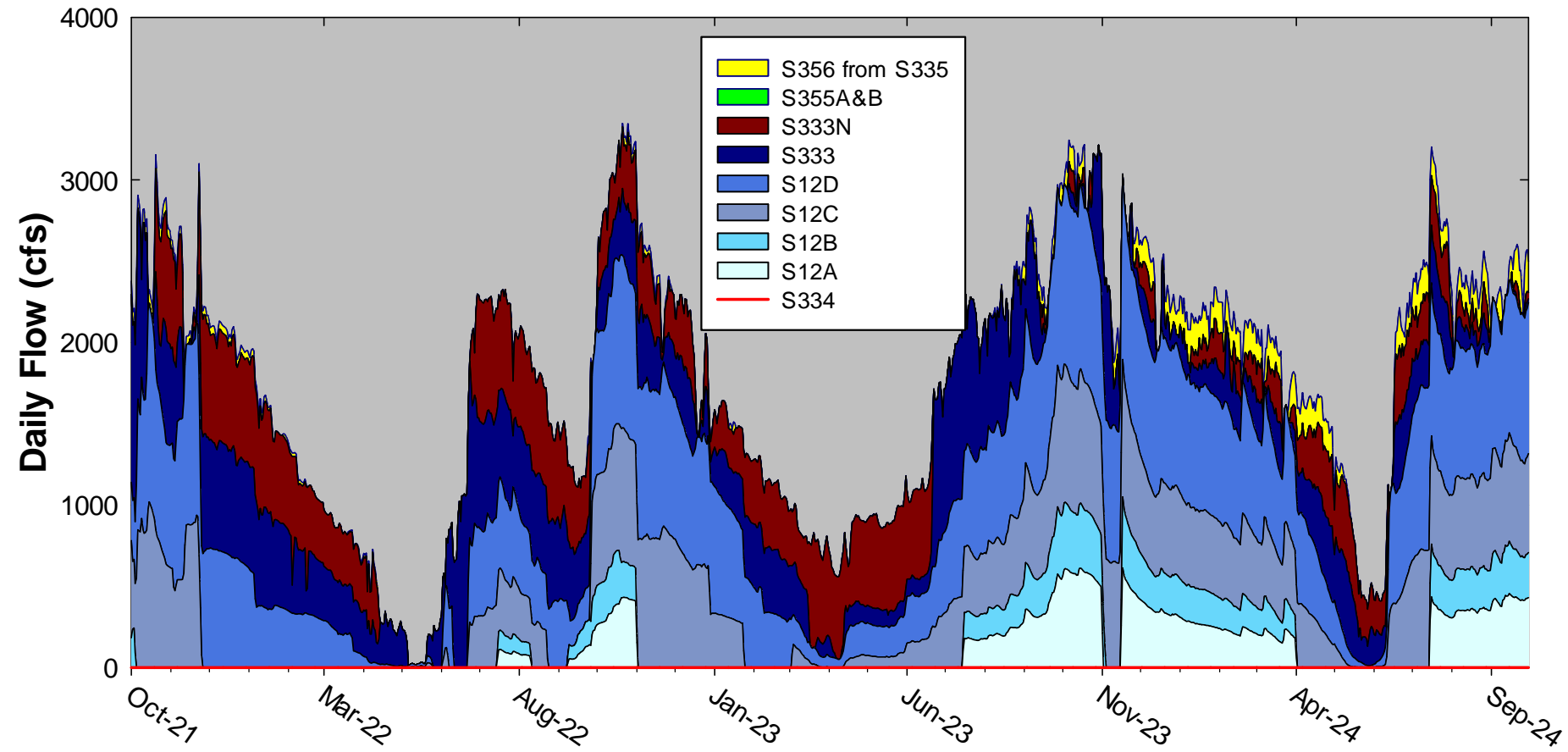
# Annual Flow-weighted Mean Concentrations

## Inflows to ENP through Shark River Slough

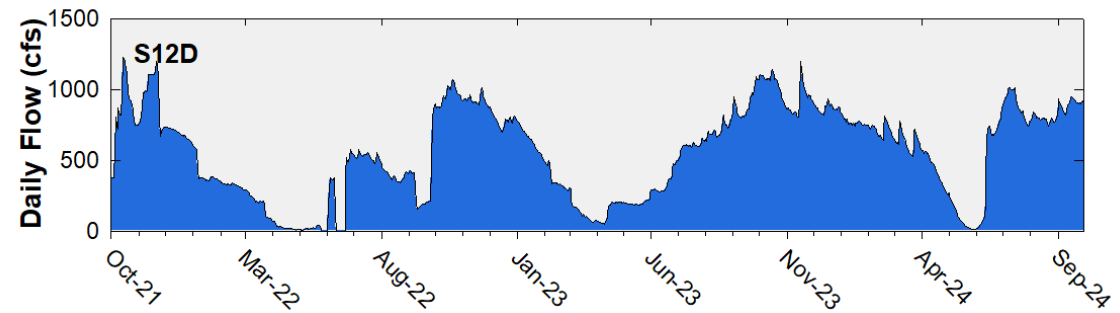
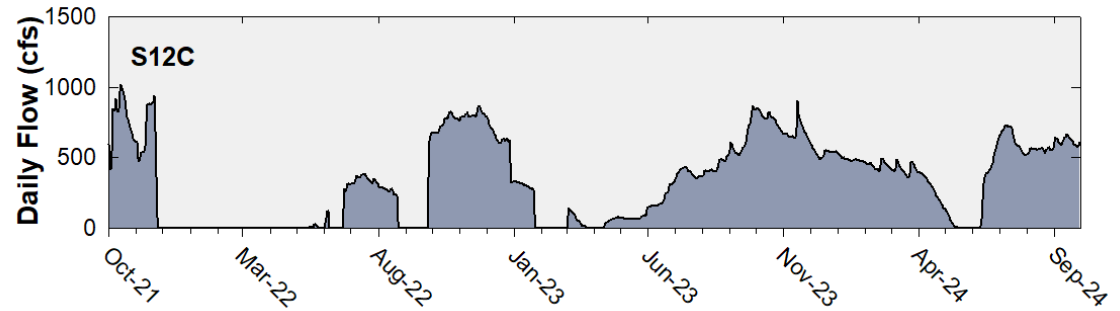
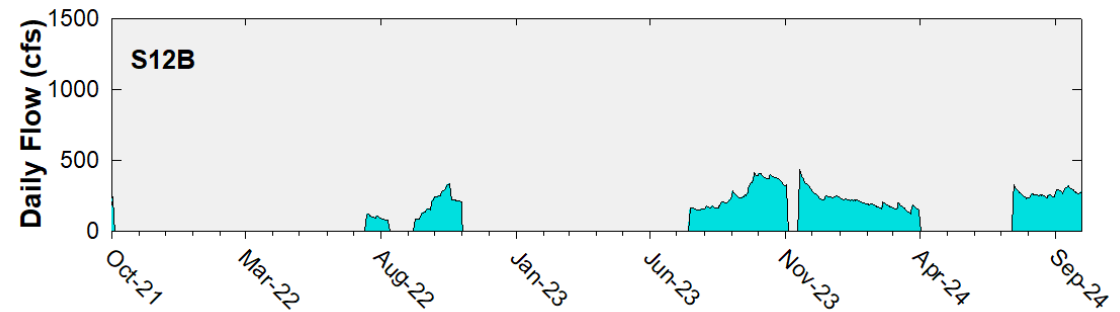
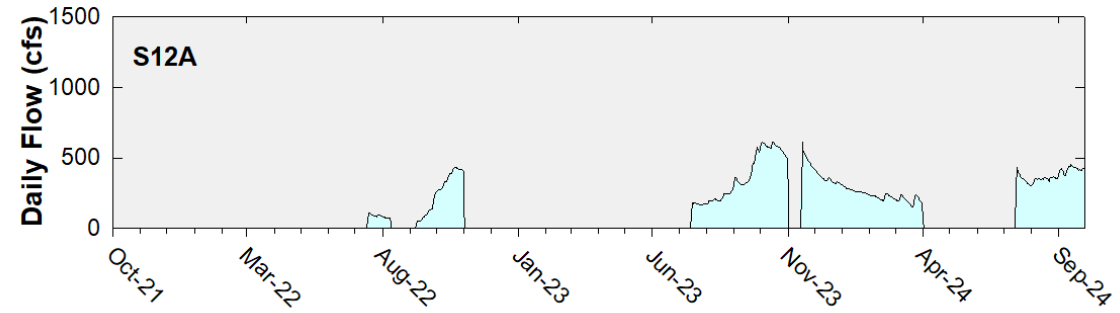


**12-month FWMC at the end of each water year  
compared to the TP long-term limits**

## Shark River Slough Structure Daily Flows

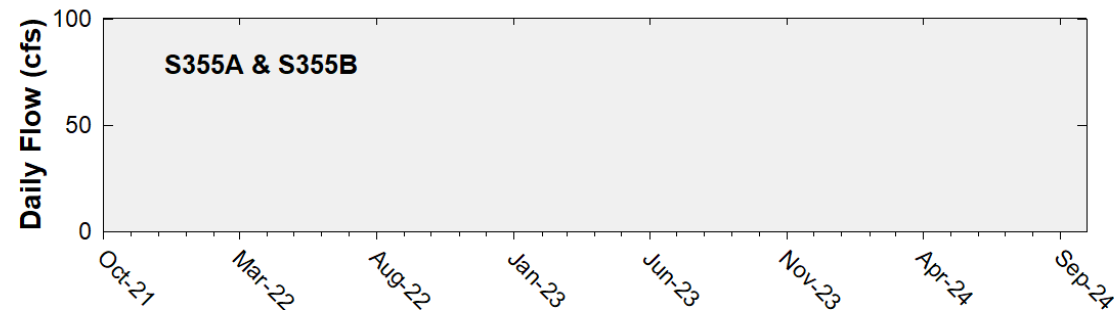
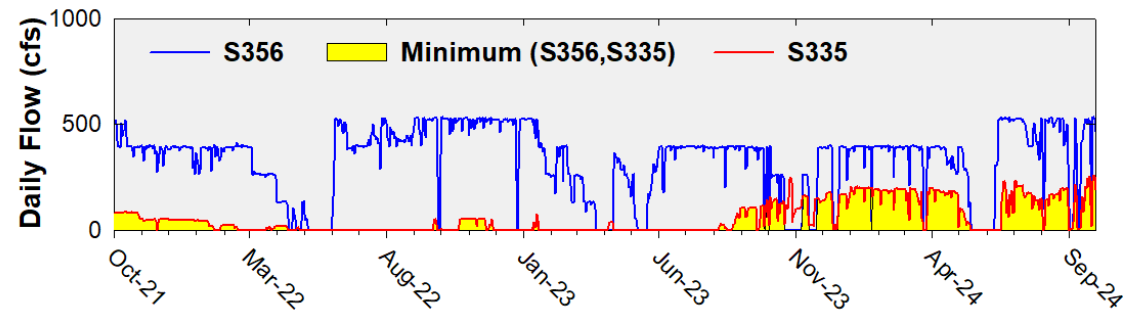
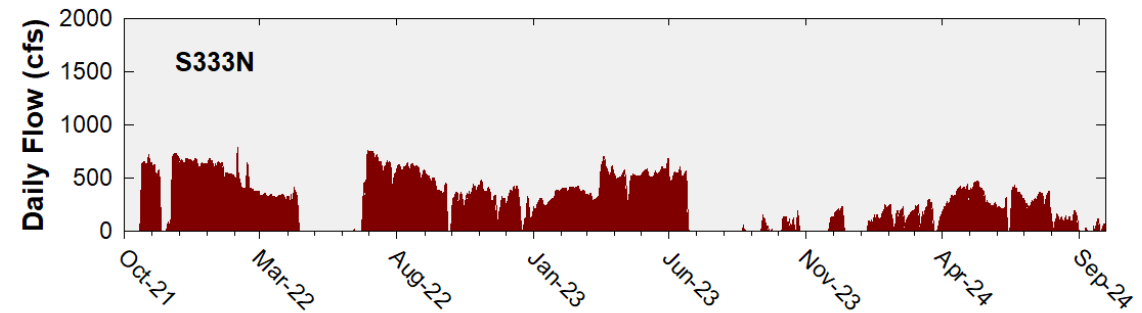
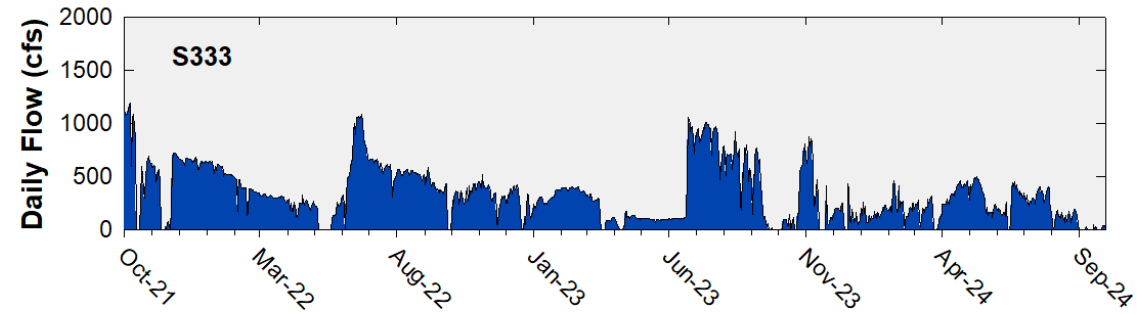


## Daily Flows at S12 Structures to Shark River Slough

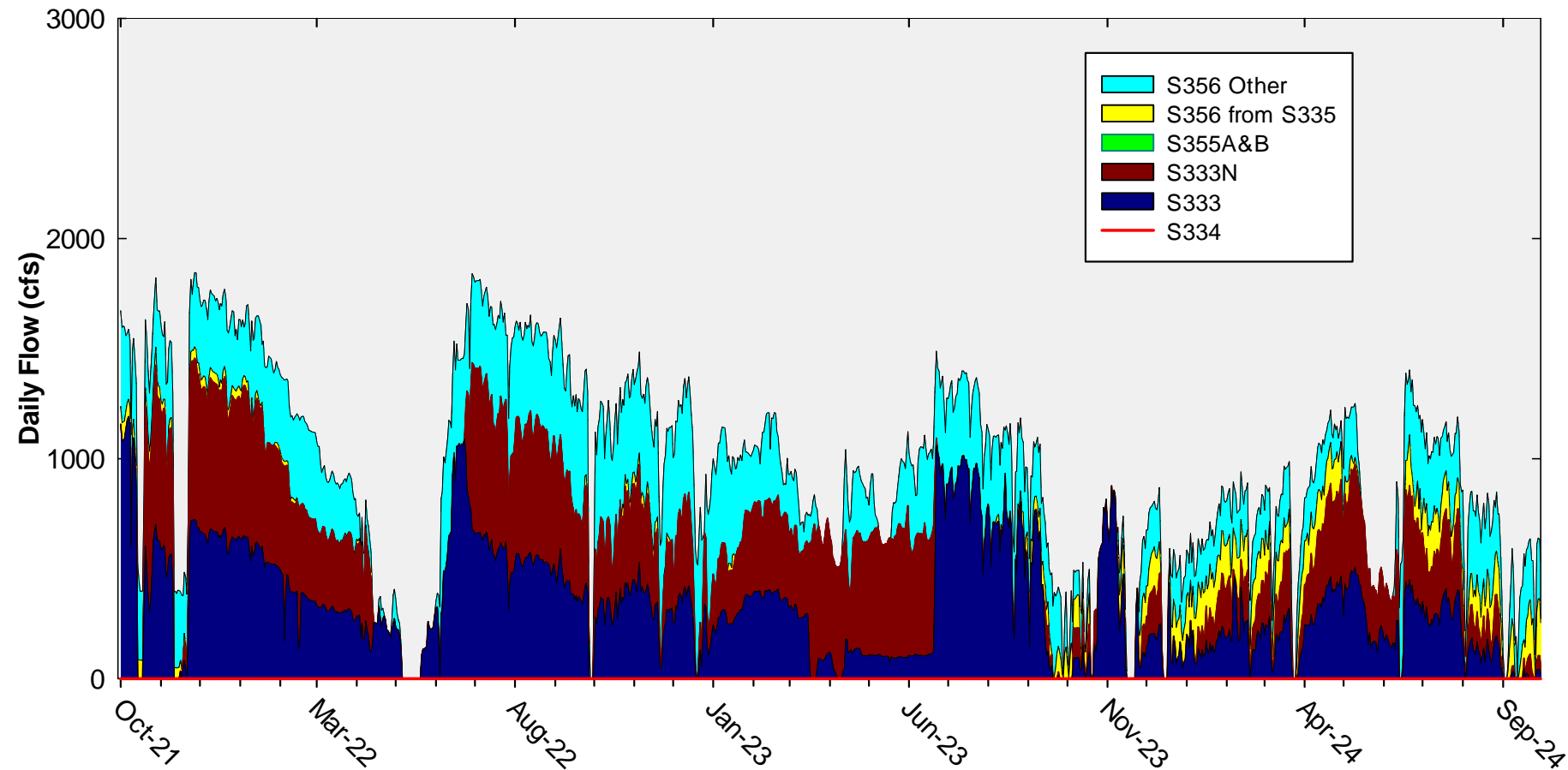


# Daily Flows at Individual Inflow Structures to Shark River Slough

(There was no flow at S355A and S355B during the period)

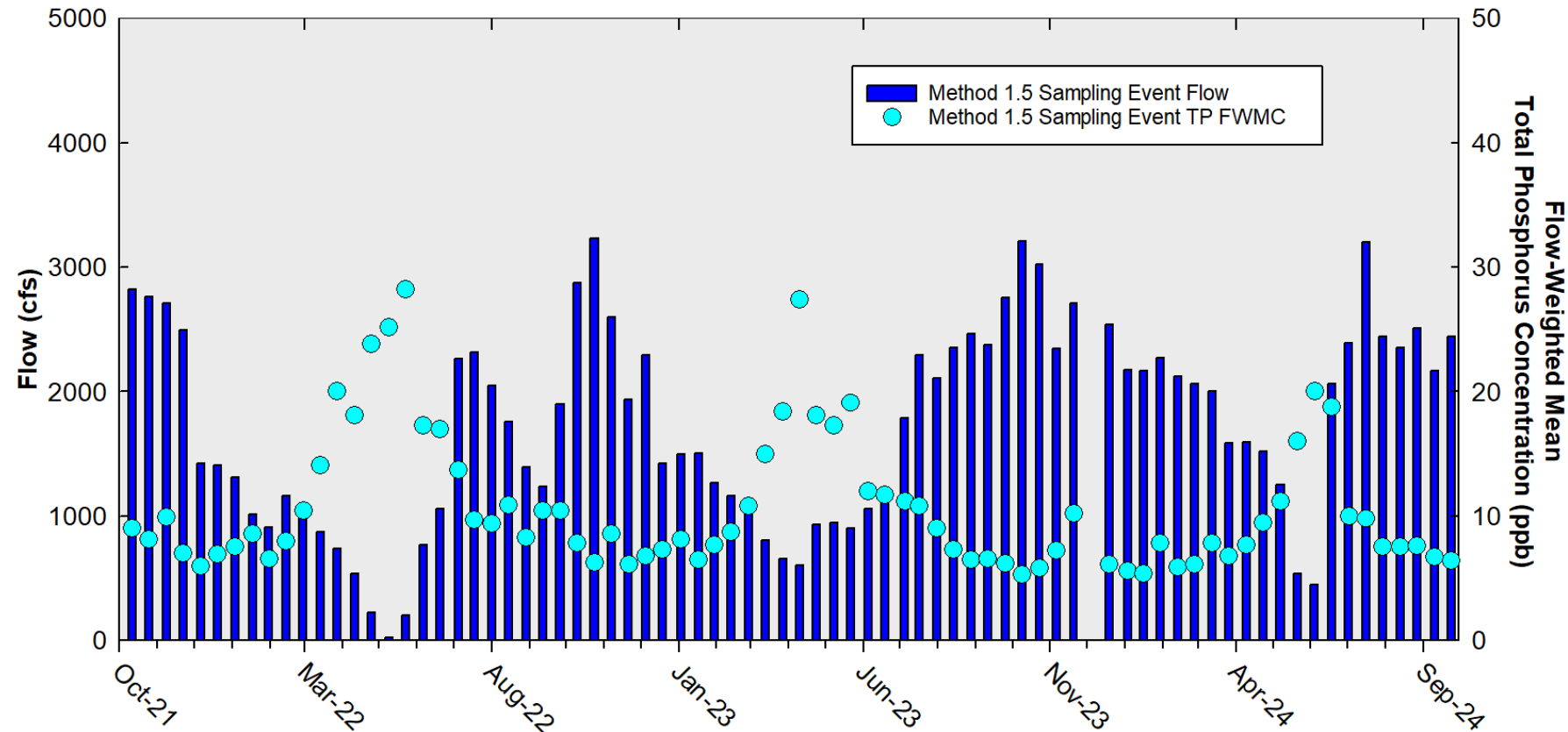


## Daily Flows Into Shark River Slough through S333&S333N, S355A&B, and S356 and Out through S334



# Shark River Slough

## Sampling Event Flow and FWMC

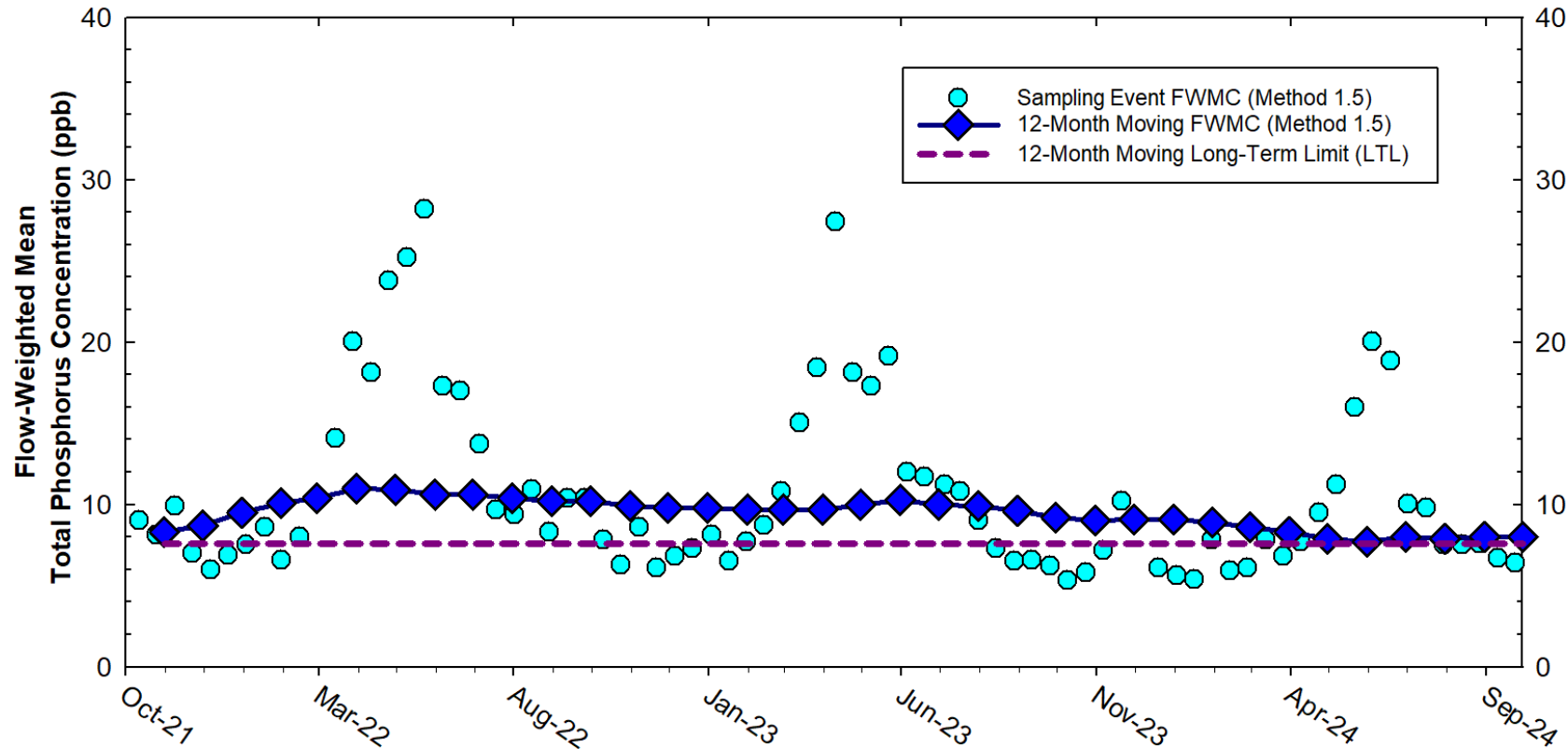


**Flow to Shark River Slough and the corresponding TP FWMCs  
for individual sampling events**



# Shark River Slough

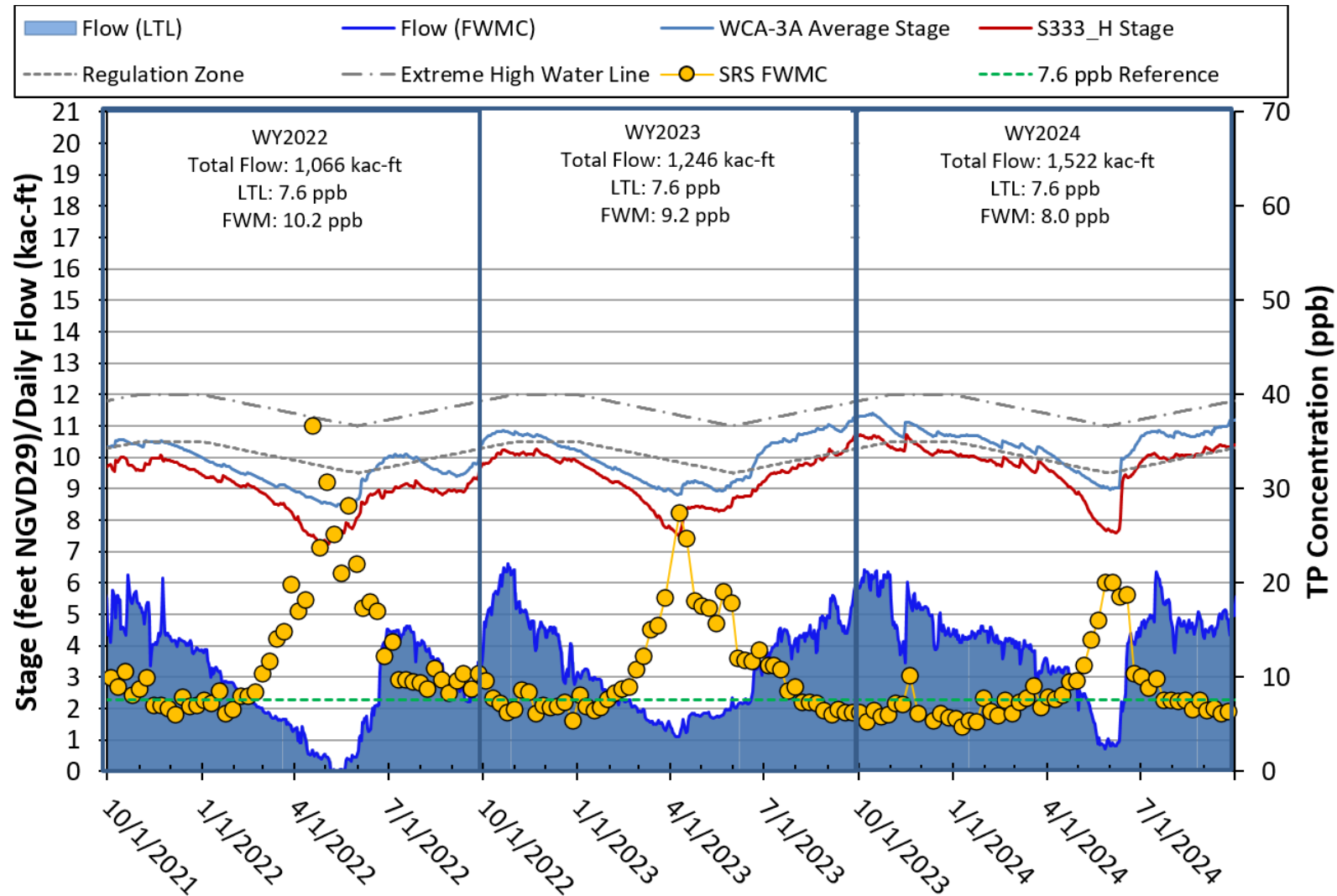
## 12-month Moving Flow-Weighted Mean TP and Long-Term Limit



**The composite TP concentration and 12-month FWMC at the end of each month for each sampling event**

# Stage, Flow, and TP FWMC

## Inflows to ENP through Shark River Slough



Thank You

