



SETTLEMENT AGREEMENT QUARTERLY REPORT

January – March 2022

Chelsea Qiu, P.E., Ph.D.

Lead Engineer

Compliance Assessment & Reporting Section

Water Quality Bureau

Technical Oversight Committee

August 30, 2022



sfwmd.gov

SUMMARY

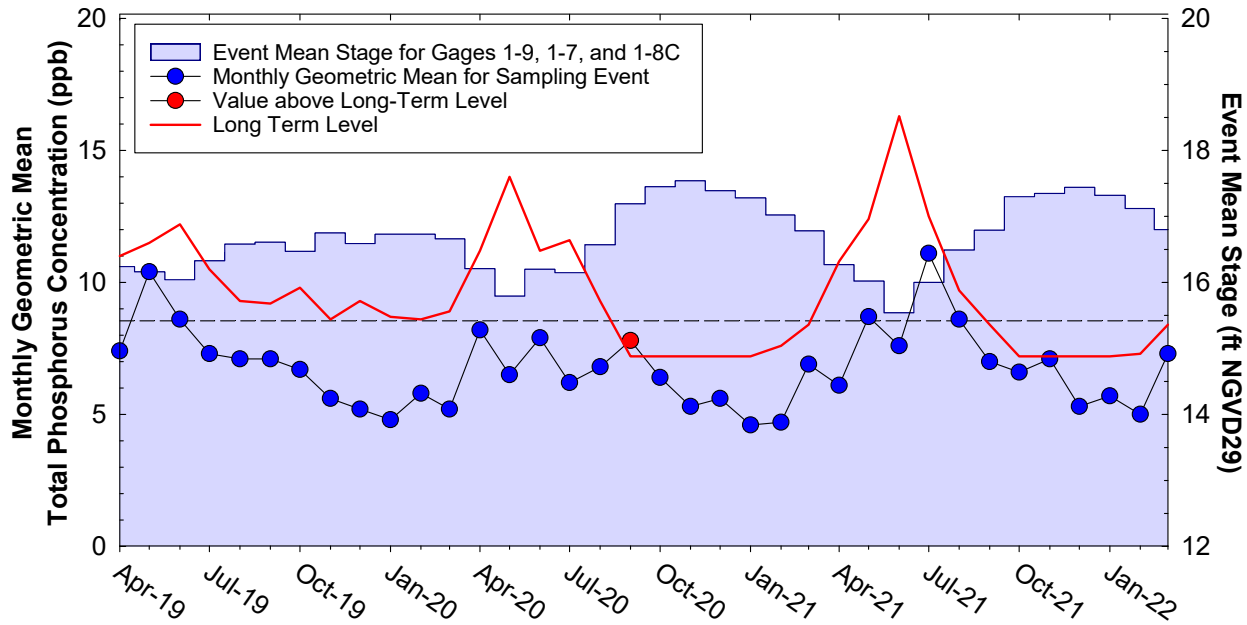
Month	Geometric Mean TP Concentration (ppb)	Long-Term Level (ppb)	Mean Stage (ft NGVD29)	Number of Samples	
Arthur R. Marshall Loxahatchee National Wildlife Refuge					
Jan 2022	5.7	7.2	17.32	14	
Feb 2022	5.0	7.3	17.12	13	
Mar 2022	7.3	8.4	16.80	14	
12-Month Period Ending	Total Flow (kac-ft)	12-Month TP FWMC (ppb)	Long-Term Limit (ppb)	Percent of Sampling Events Greater than 10 ppb	
				Observed (%)	Guideline (%)
Everglades National Park – Shark River Slough – <i>PROVISIONAL DATA and RESULTS</i>					
Jan 2022	1,128.9	10.1	7.6	48.1	40.1
Feb 2022	1,055.1	10.4	7.7	51.9	40.3
Mar 2022	997.4	11.0	7.9	57.7	41.5
Everglades National Park – Taylor Slough and Coastal Basins					
Jan 2022	297.7	4.8	11.0	0.0	53.1
Feb 2022	285.7	4.8	11.0	0.0	53.1
Mar 2022	286.3	4.8	11.0	0.0	53.1

FWMC for SRS - computed as $S12s + [S333 + S333N + S355A + S355B + \min(S356, S335) - S334]$.

S334 flow is not excluded from the total flow for long-term limit calculations.

FWMC for TS and CB – computed as $(S332D - S332DX1 - S328) + S328 + G737 + S18C$.

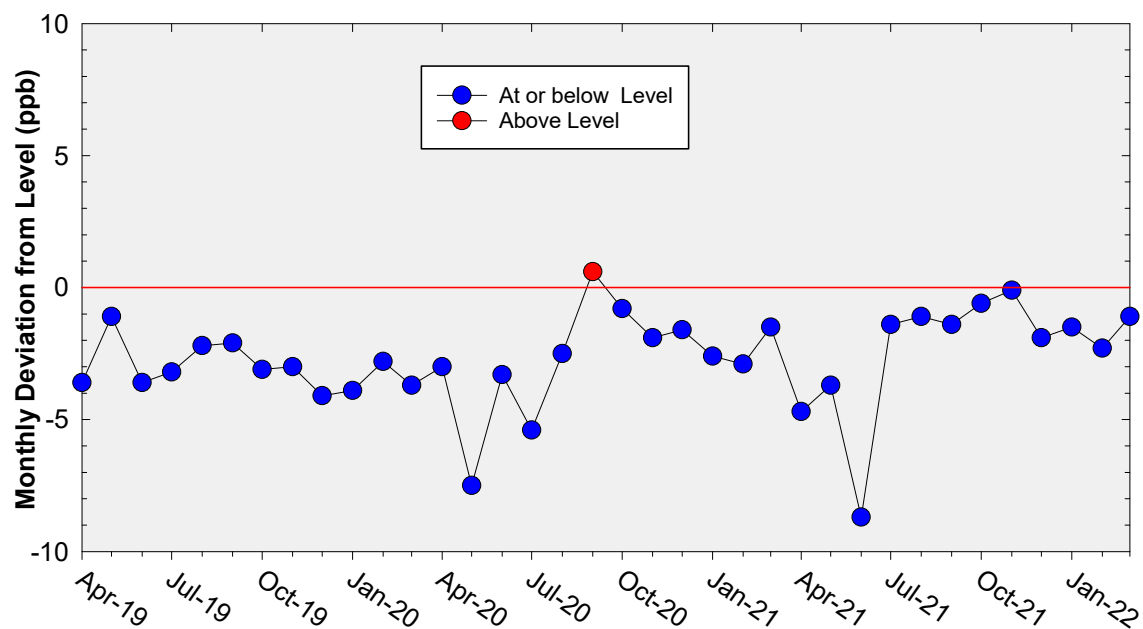
A.R.M Loxahatchee National Wildlife Refuge Monthly Total Phosphorus Geometric Mean Concentrations



36-Month Average TP Geometric Mean = 6.8 ppb

36-Month Average TP Long-term Level is = 9.5 ppb

A.R.M Loxahatchee National Wildlife Refuge Deviation of monthly geometric mean total phosphorus



36-Month Average TP geometric mean = 2.8 ppb below the Long-Term Level

Refuge TP Compliance Tracking

For January – July 2022

Month	Geometric Mean TP Concentration (ppb)	Long-Term Level (ppb) Effective 12/31/2006	Average Stage (feet NGVD29)	Number of Samples
1st Quarter 2022 Compliance Tracking				
Jan-2022	5.7	7.2	17.32	14
Feb-2022	5.0	7.3	17.12	13
Mar-2022	7.3	8.4	16.80	14
Preliminary Data Outlook				
Apr-2022	7.7	10.6	16.31	13
May-2022	9.1	13.3	15.89	7
Jun-2022	9.7	9.3	16.59	14
Jul-2022	7.6	10.32	16.36	12

Note: 17.14 ft NGVD29 was used for the long-term level calculation for January 2022.

Shark River Slough TP Concentration Compliance Tracking

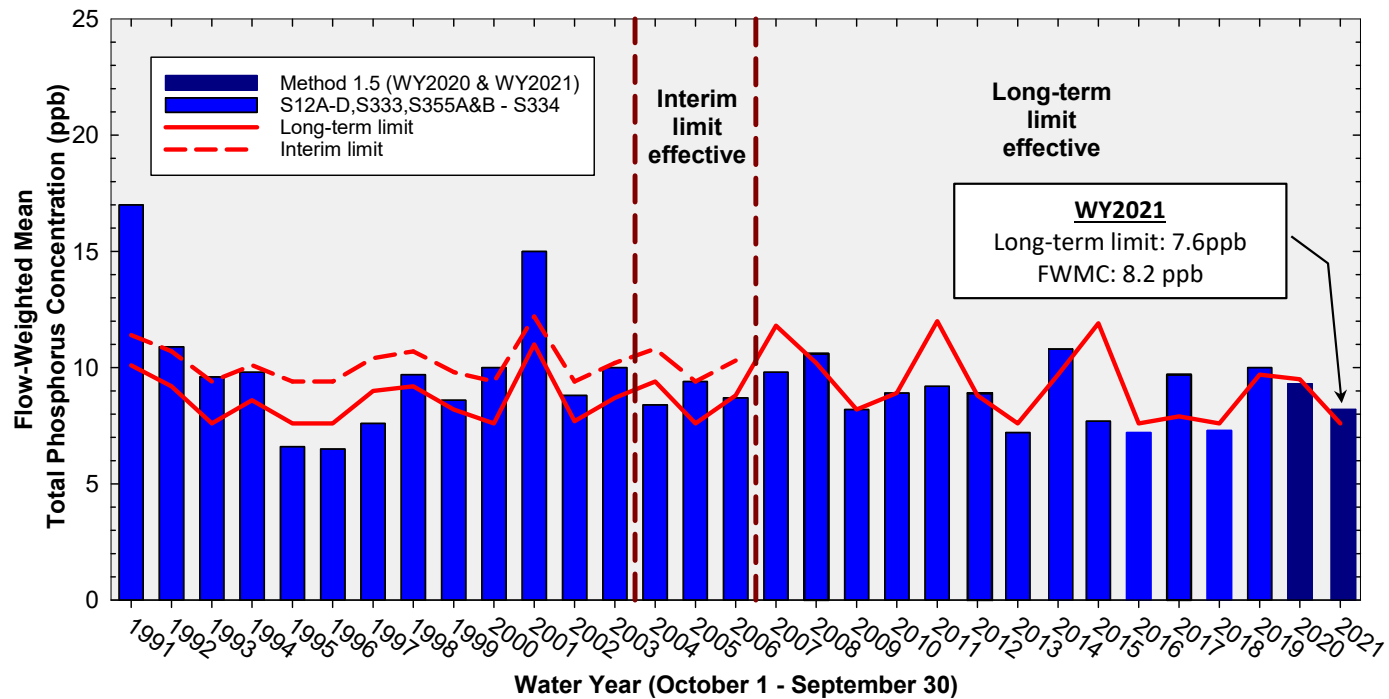
12-Month Period	Total Flow (kac-ft)	Flow-Weighted Mean TP Concentration (ppb)	Long-Term Limit (ppb) <i>Effective 12/31/2006</i>	Percent of Sampling Events Greater than 10 ppb	
				Observed (%)	Guideline (%)
Feb 2021 - Jan 2022	1,128.9	10.1	7.6	48.1	40.1
Mar 2021 - Feb 2022	1,055.1	10.4	7.7	51.9	40.3
Apr 2021 - Mar 2022	997.4	11.0	7.9	57.7	41.5

Shark River Slough PROVISIONAL RESULTS:

FWMC computed as S12s + [S333 + S333N + S355A + S355B + minimum of (S356, S335) – S334] using all flow and TP grabs on bi-weekly compliance sampling dates.

S334 flow was not excluded from the flow for long-term limit calculations.

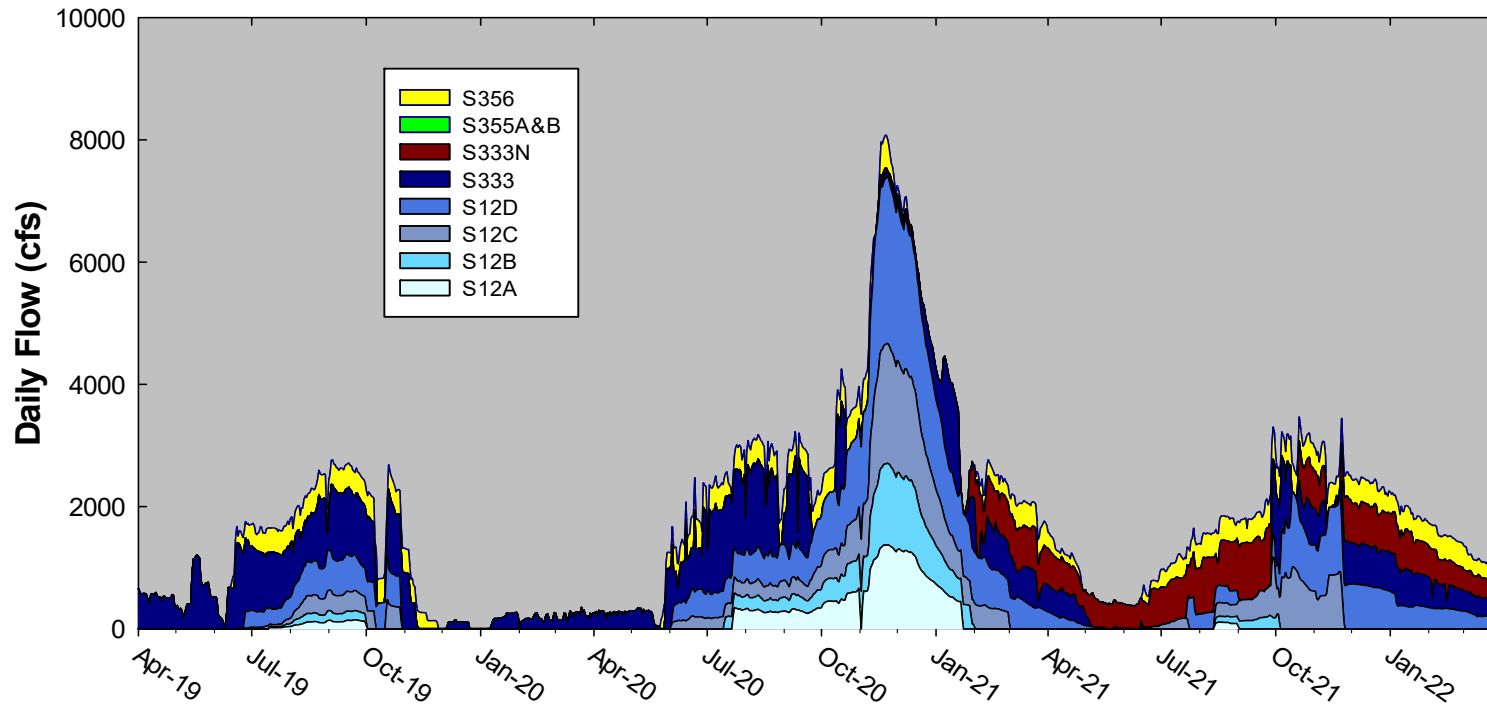
Annual Flow-weighted Mean Concentrations Inflows to ENP through Shark River Slough



**12-month FWMC at the end of each water year
compared to the TP interim and long-term limits**

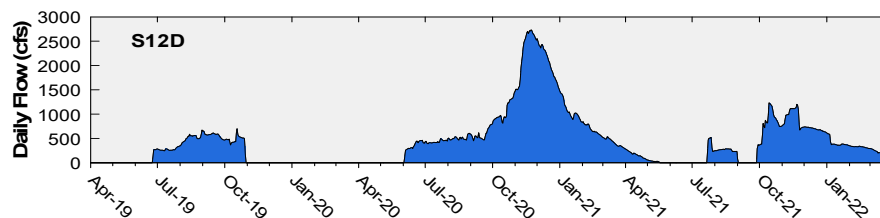
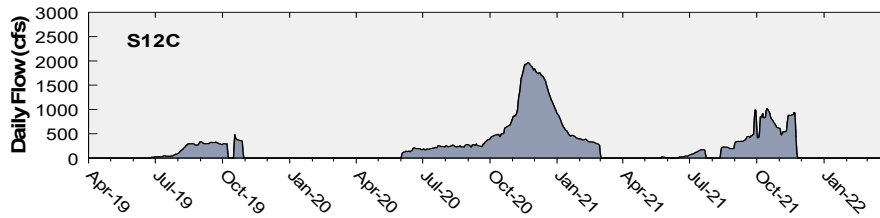
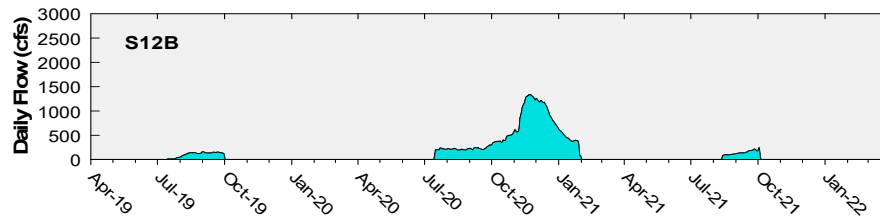
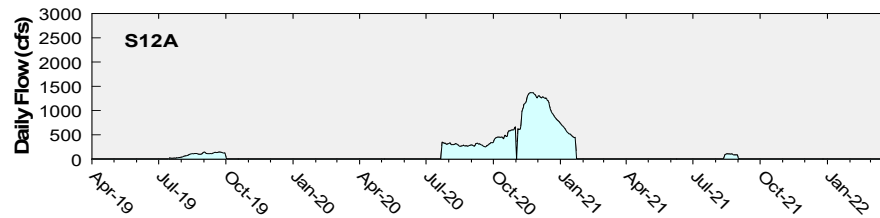
Shark River Slough Structure Daily Flows

WY2022 (October 1, 2021, to March 31, 2022) Flow Data for S12s are Provisional.

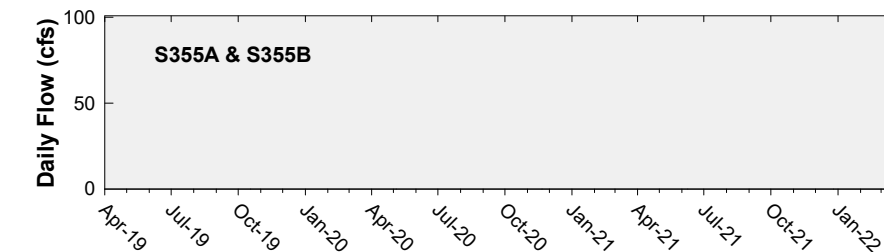
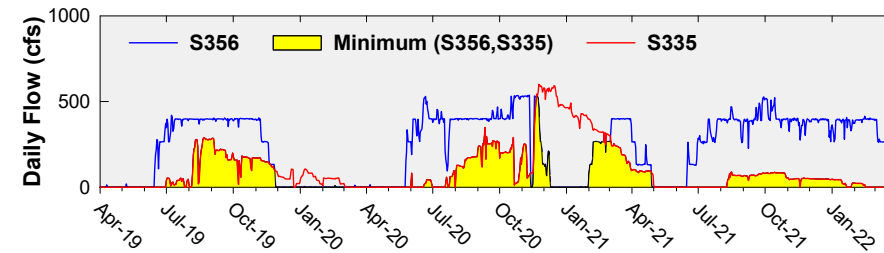
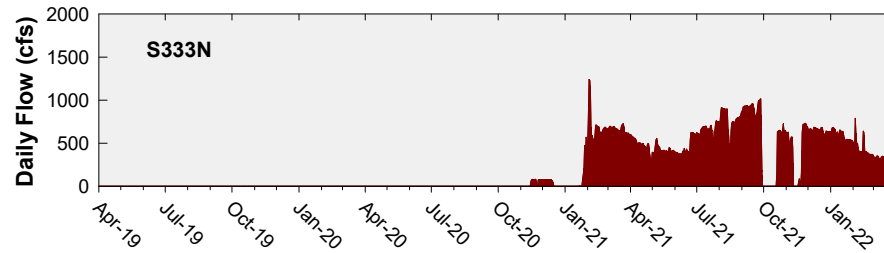
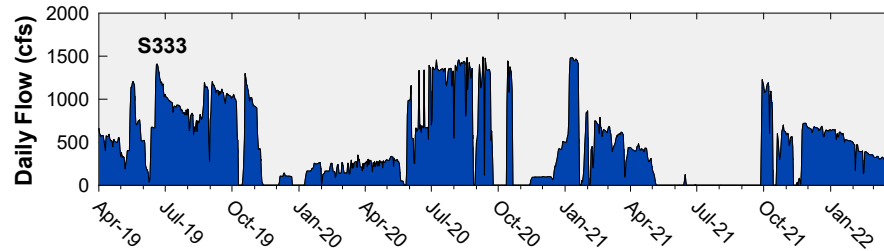


Daily Flows at S12 Structures to Shark River Slough

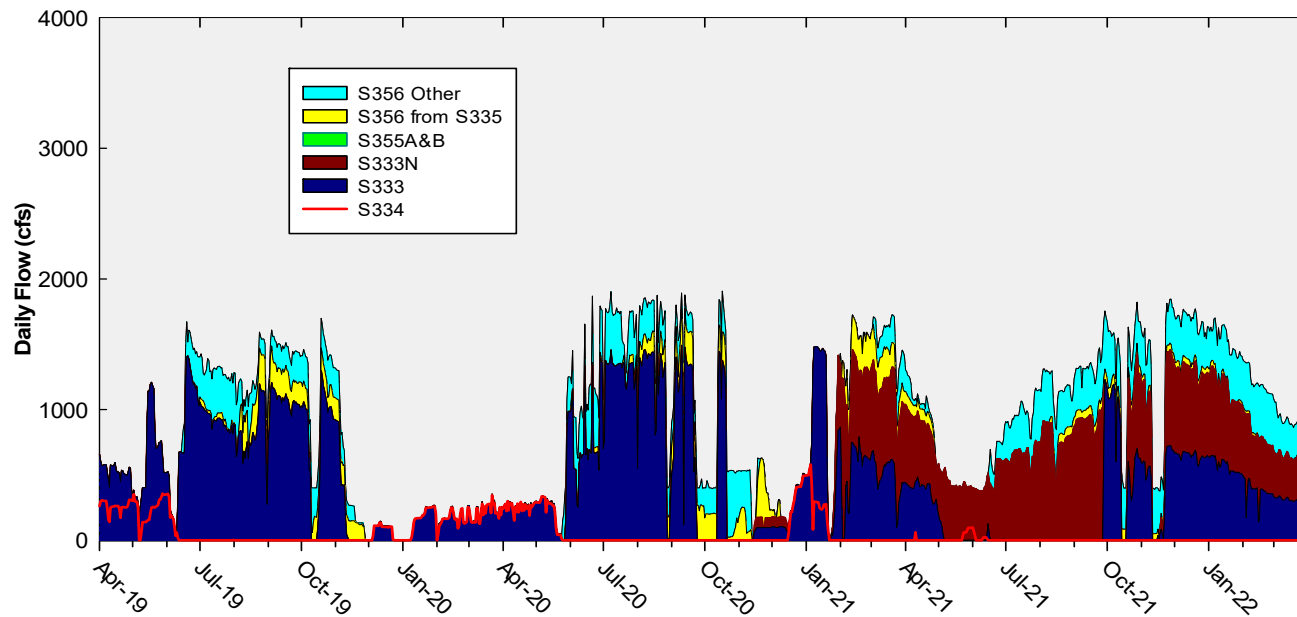
WY2022 (October 1, 2021, to March 31, 2022) Flow Data for S12s are Provisional.



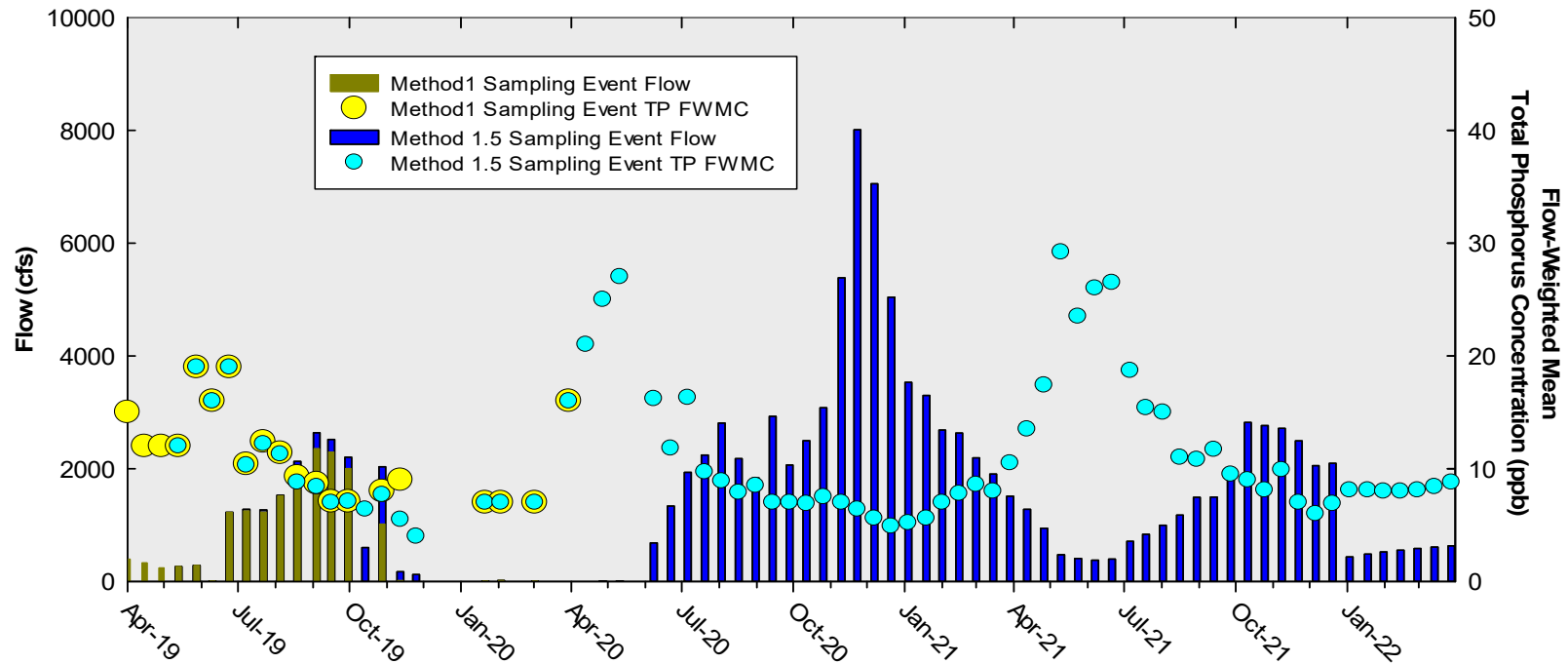
Daily Flows at Individual Inflow Structures to Shark River Slough



Daily Flows Into Shark River Slough through S333&S333N, S355A&B, and S356 and Out through S334



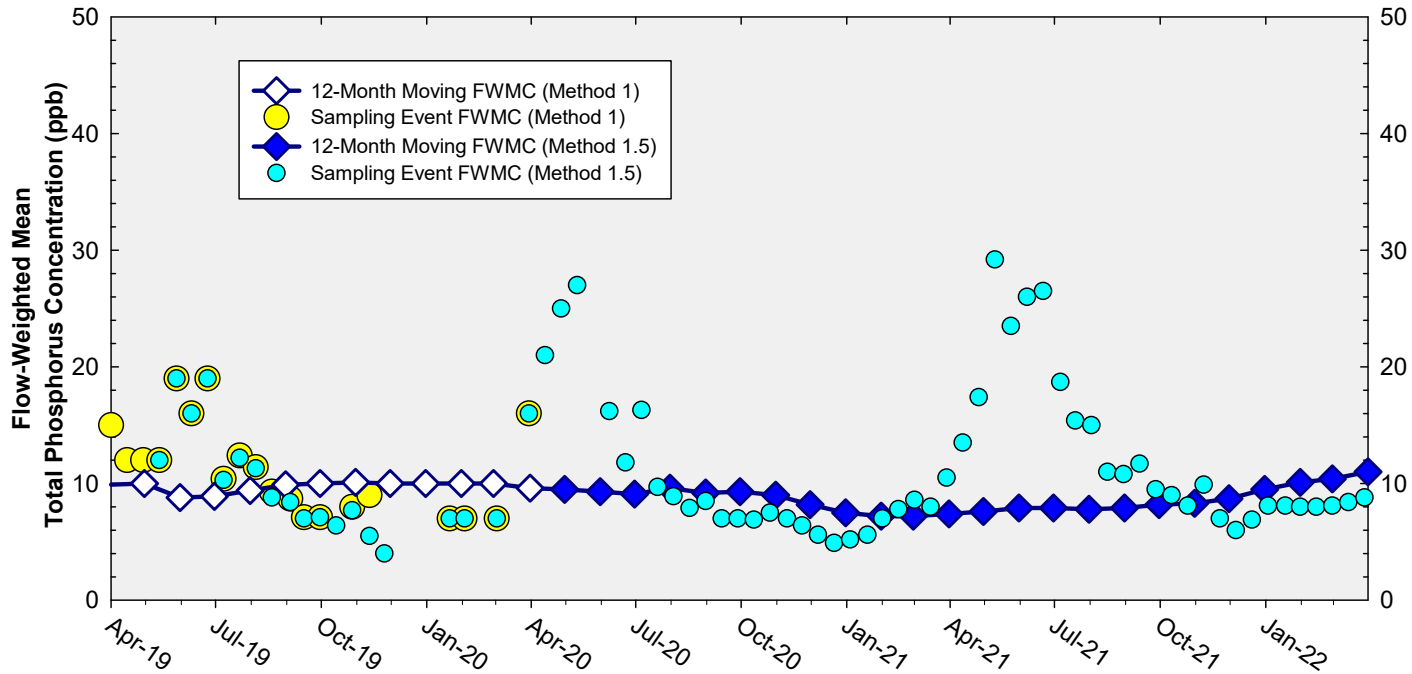
Shark River Slough Sampling Event Flow and FWMC



Flow to Shark River Slough and the corresponding TP FWMCs for individual sampling events

Note: WY2022 (October 1, 2021, to March 31, 2022) Flow Data for S12s are Provisional.

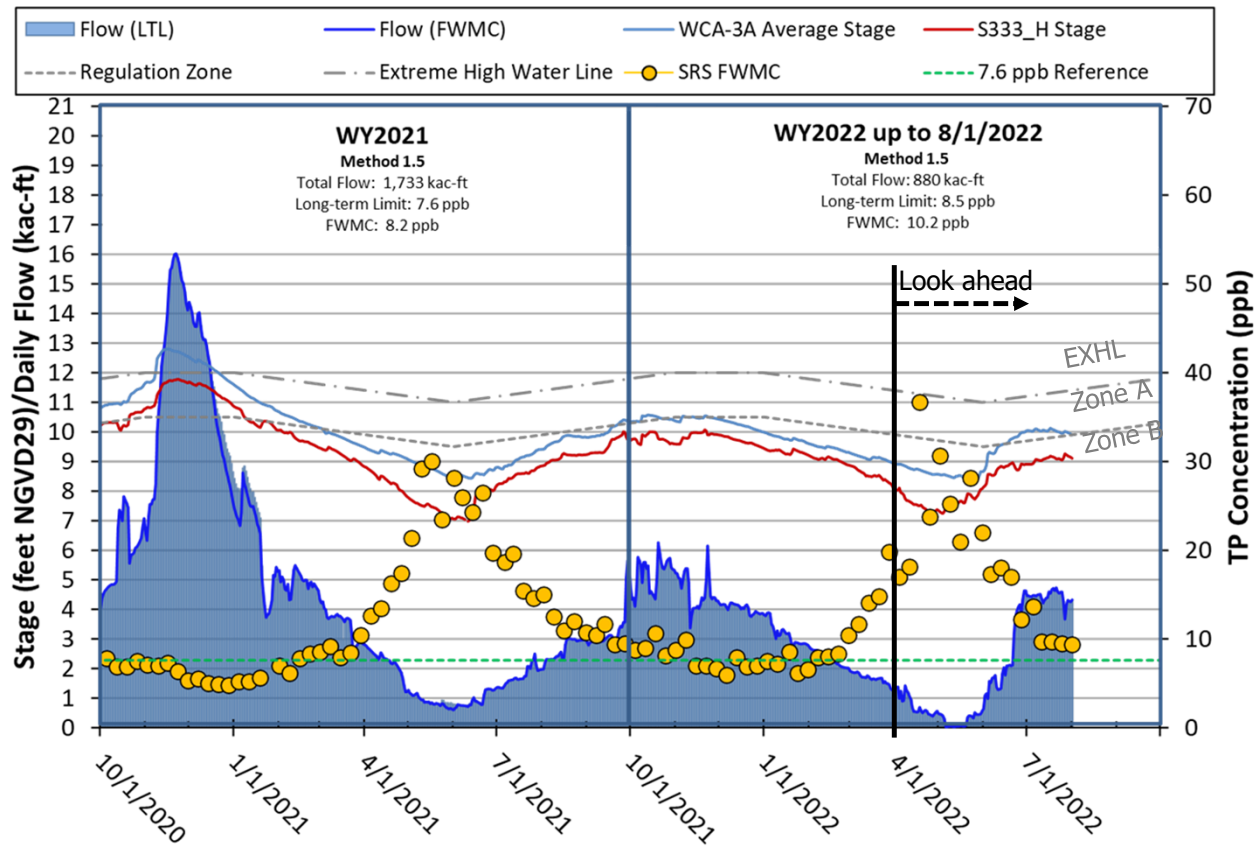
Flow-Weighted Mean Concentrations Inflows to ENP through Shark River Slough



The composite TP concentration and 12-month FWMC at the end of each month for each sampling event

WY2022 (October 1, 2021, to March 31, 2022) Flow Data for S12s are Provisional.

WY2021 & 2022* Stage, Flow, and TP FWMC Inflows to ENP through Shark River Slough



* WY2022 Up to Date results are Provisional data for Look Ahead

Taylor Slough and Coastal Basins

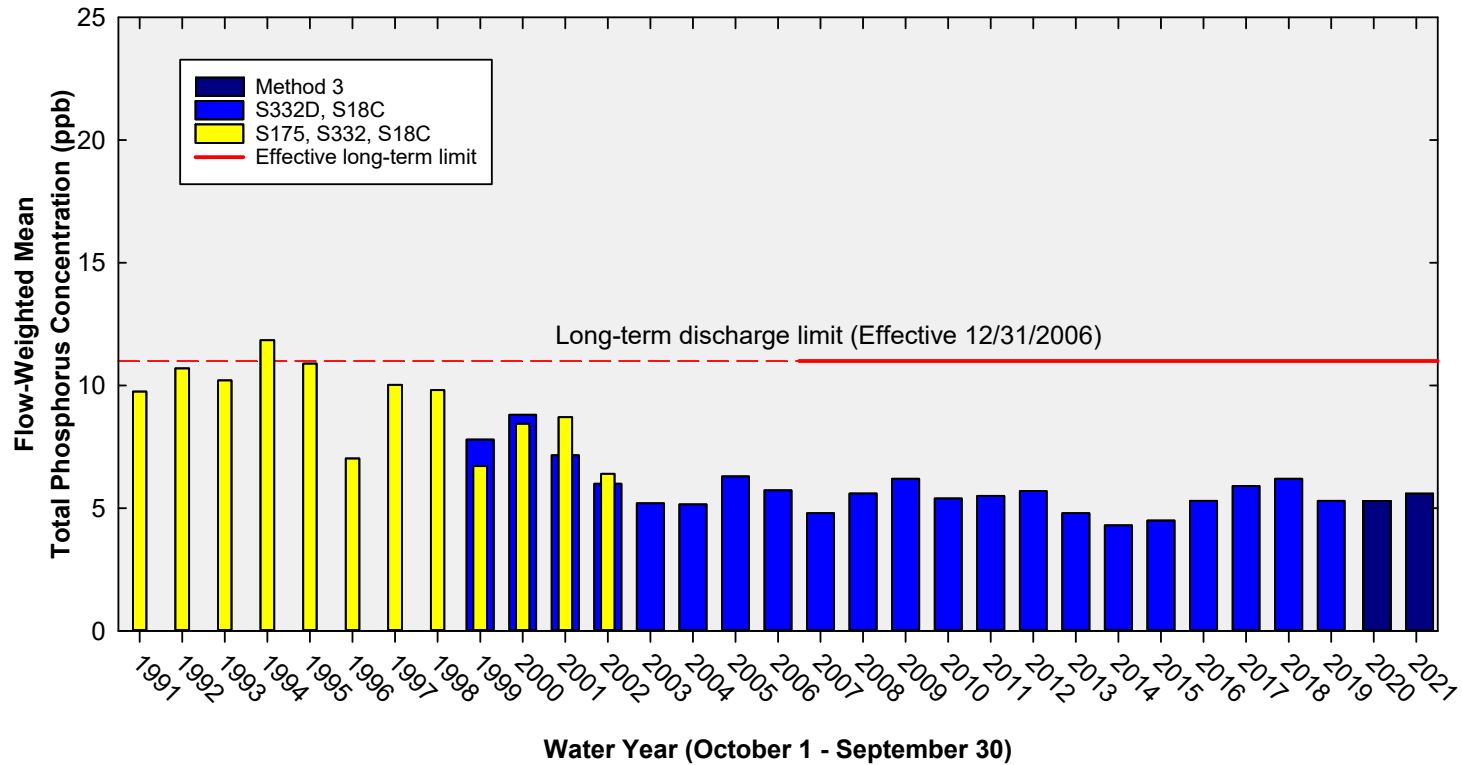
TP Concentration Compliance Tracking

12-Month Period	Total Flow (kac-ft)	Flow-Weighted Mean TP Concentration in ppb LTL = 11.0 ppb Effective 12/31/2006	Observed Percent of Sampling Events Greater than 10 ppb Guideline = 53.1%
Feb 2021 - Jan 2022	297.7	4.8	0.0
Mar 2021 - Feb 2022	285.7	4.8	0.0
Apr 2021 - Mar 2021	286.3	4.8	0.0

FWMC computed as [(S332D-S332DX1-S328)+S328+G737+S18C] using all flow and TP grabs on weekly compliance sampling.

Total flow is (S332D-S332DX1)+G737+S18C]

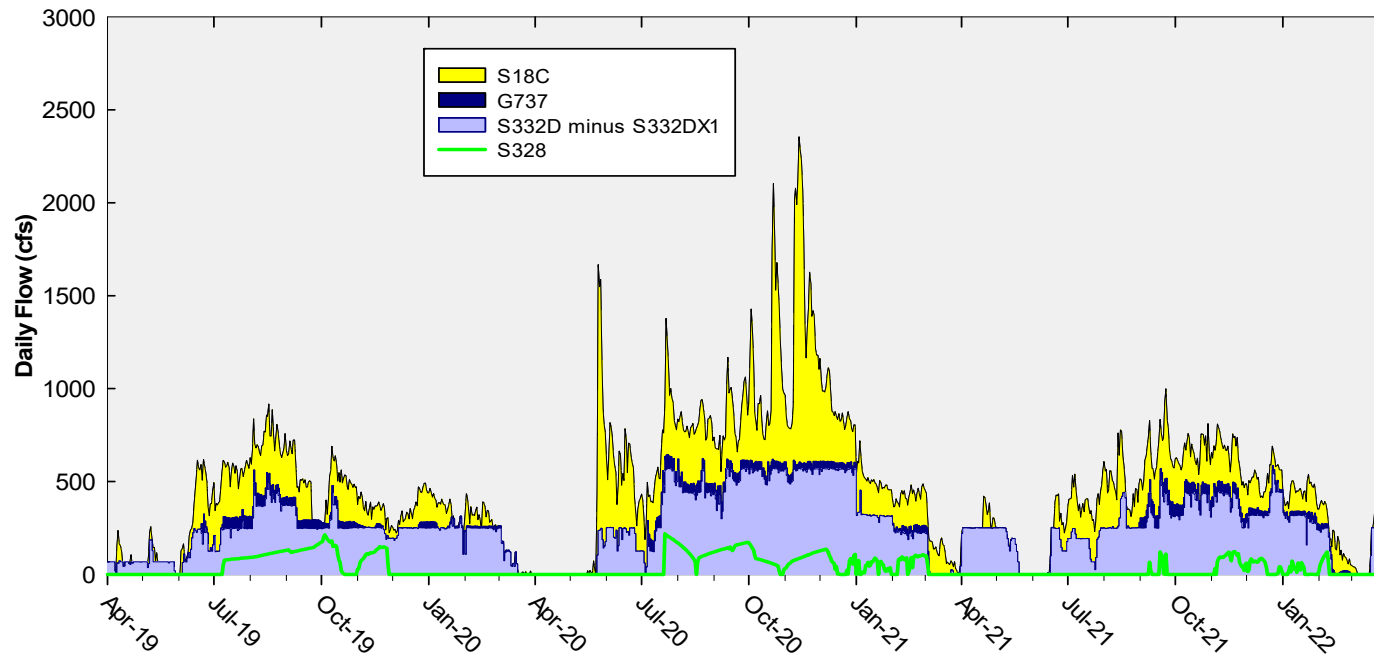
Annual Flow-Weighted Mean Concentrations Inflows to the ENP through Taylor Slough and Coastal Basins



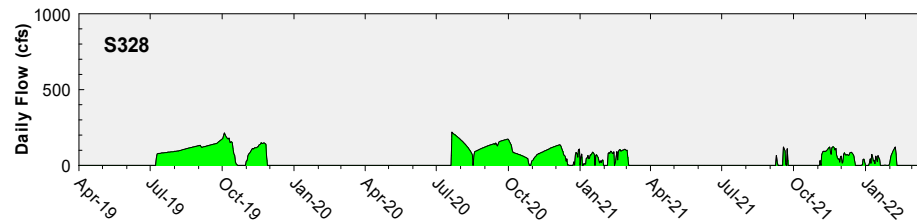
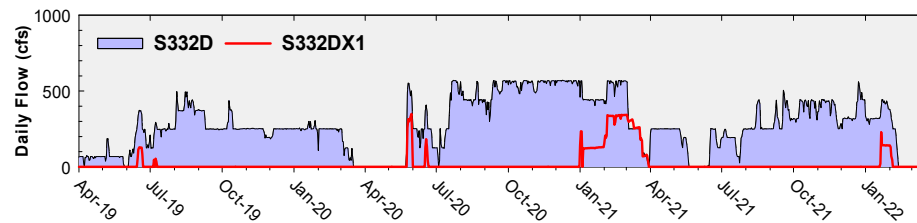
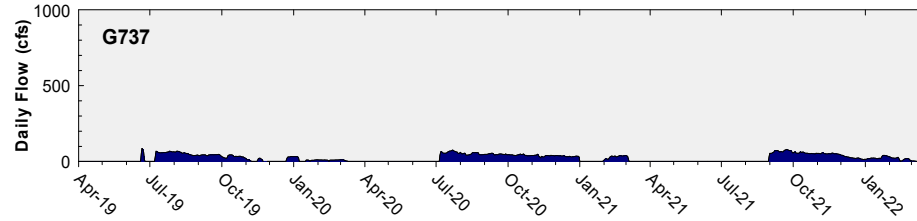
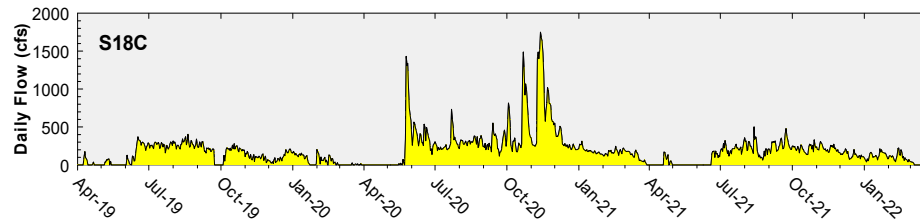
**The 12-month FWMC at the end of each water year
compared to the 11 ppb long-term TP limit**

Note: Blue bars show S332D, S18C, & S174 until September 2007 when S174 was plugged.

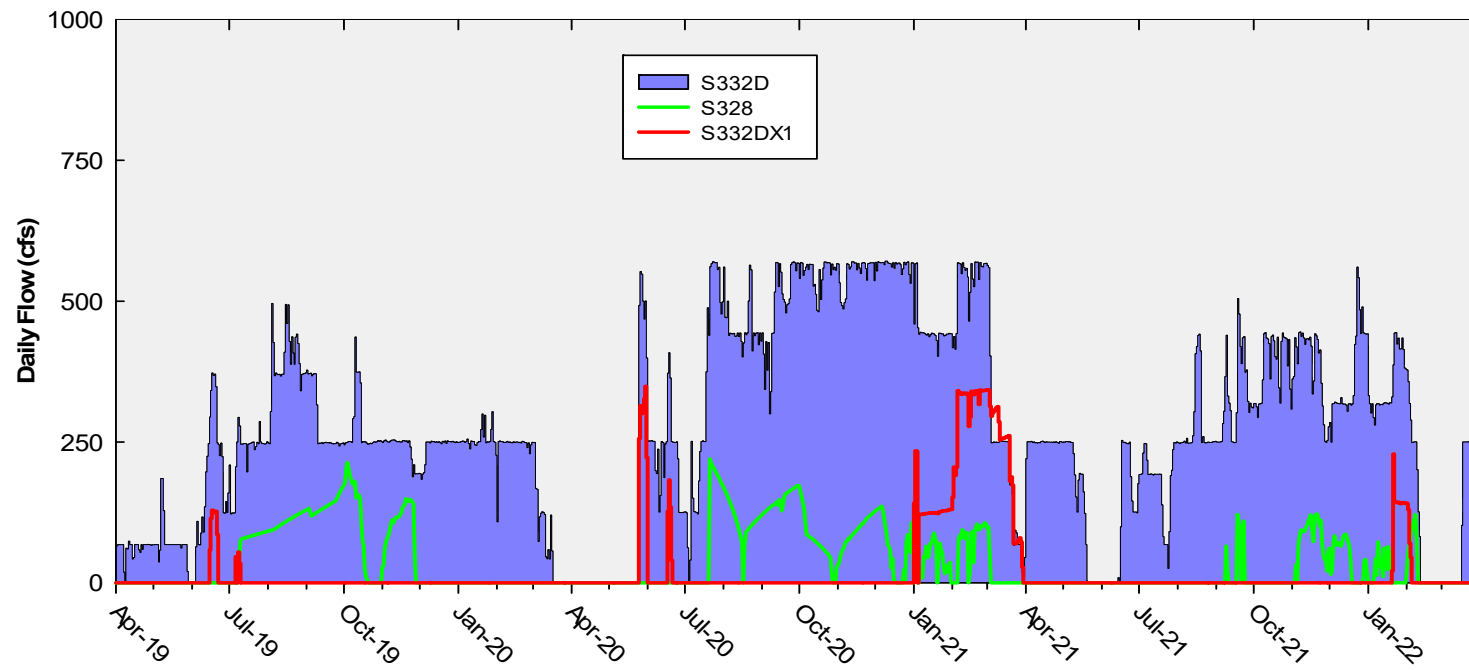
Daily Flows at Taylor Slough and Coastal Basins Structures into ENP



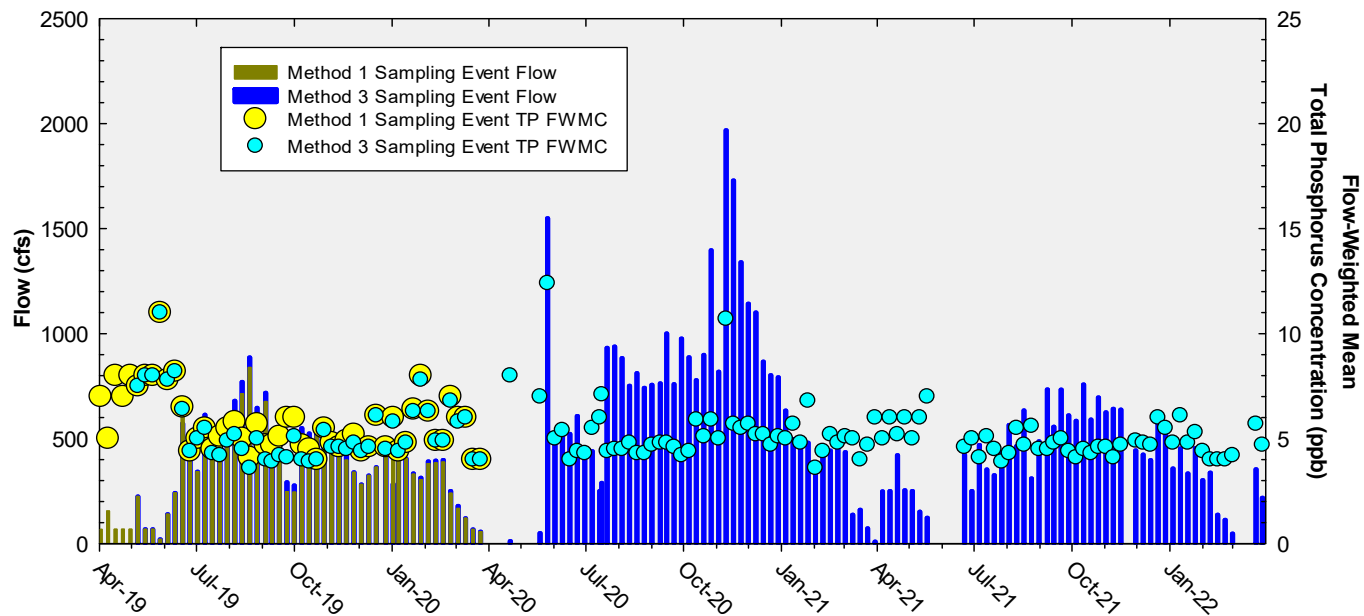
Daily Flows at Individual Taylor Slough and Coastal Basins Structures



Daily Flows Into and Out of C-111 Detention Area

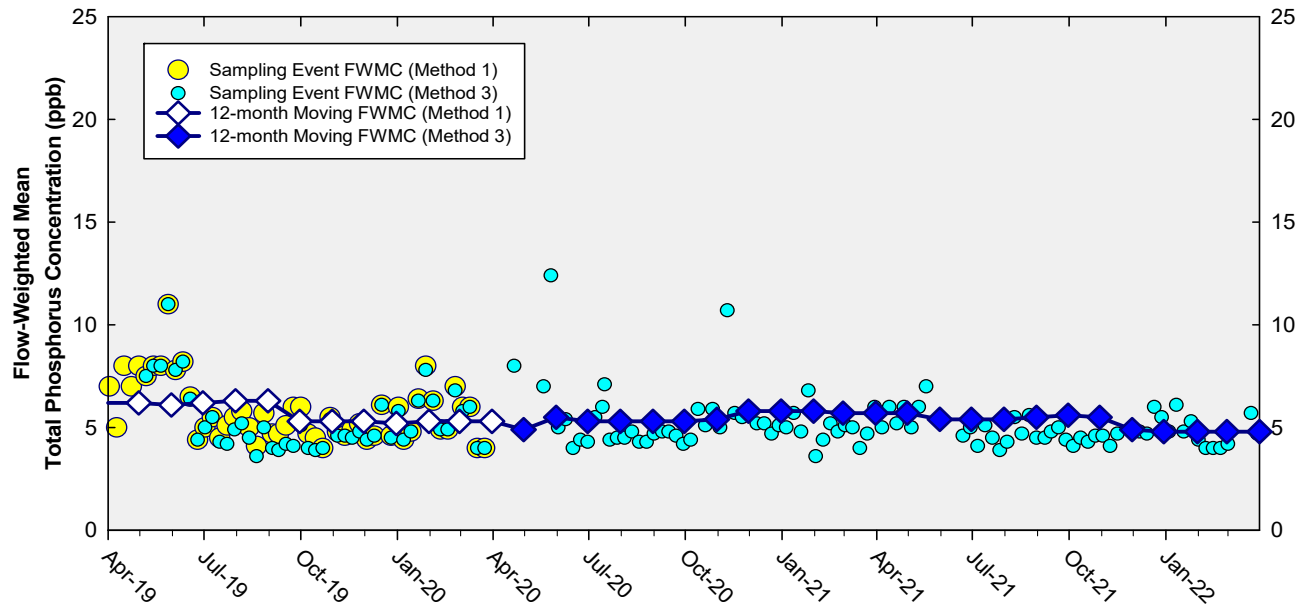


Taylor Slough and Coastal Basins Sampling Event Flow and FWMC



Flow at Taylor Slough and Coastal Basins structures and the corresponding TP FWMCs for individual sampling events

Flow-Weighted Mean Concentrations Inflows to the ENP through Taylor Slough and Coastal Basins



The 12-month FWMC at the end of each month and the composite TP concentration for each sampling event

Thank You

