



SETTLEMENT AGREEMENT QUARTERLY REPORT

April - June 2024

Chelsea Qiu, P.E., Ph.D.

Lead Engineer

Compliance Assessment & Reporting Section

Water Quality Bureau

Technical Oversight Committee

December 3, 2024



sfwmd.gov

SUMMARY

Month	Mean Stage (ft NGVD29)	Long-Term Level (ppb)	Geometric Mean TP Concentration (ppb)	Number of Samples	
Arthur R. Marshall Loxahatchee National Wildlife Refuge					
Apr-24	16.32	10.5	6.7	12	
May-24	15.78	14.2	11.0	6	
Jun-24	15.09	N/A	No data	0	
12-Month Period Ending	Total Flow (kac-ft)	Long-Term Limit (ppb)	12-Month TP FWMC (ppb)	Percent of Sampling Events Greater than 10 ppb	
				Guideline (%)	Observed (%)
Everglades National Park – Shark River Slough – <i>PROVISIONAL DATA and RESULTS</i>					
Apr-24	1507.8	7.6	7.9	40.1	28.0
May-24	1499.9	7.6	7.7	40.1	28.0
Jun-24	1500.0	7.6	8.0	40.1	28.0
Everglades National Park – Taylor Slough and Coastal Basins – <i>PROVISIONAL DATA and RESULTS</i>					
Apr-24	402.0	11.0	4.9	53.1	0.0
May-24	397.1	11.0	4.9	53.1	0.0
Jun-24	409.5	11.0	4.9	53.1	0.0

FWMC for SRS - computed as $S12s + [S333 + S333N + S355A + S355B + \min(S356, S335) - S334]$.

S334 flow is not excluded from the total flow for long-term limit calculations.

FWMC for TS and CB – computed as $(S332D - S332DX1 - S328) + S328 + G737 + S18C$.

Refuge TP Compliance Tracking with Outlook

Month	Average Stage (feet NGVD29)	Long-Term Level (ppb) Effective 12/31/2006	Geometric Mean TP Concentration (ppb)	Number of Samples
2nd Quarter 2024 Compliance Tracking				
Apr-2024	16.32	10.5	6.7	12
May-2024	15.78	14.2	11.0	6
Jun-2024	15.09	N/A	No data	0
Preliminary Data Outlook				
Jul-2024	16.52	9.6	9.0	14
Aug-2024	16.58	9.3	8.2	13
Sep-2024	16.79	8.4	7.1	14
Oct-2024	17.27	7.2	7.5	14

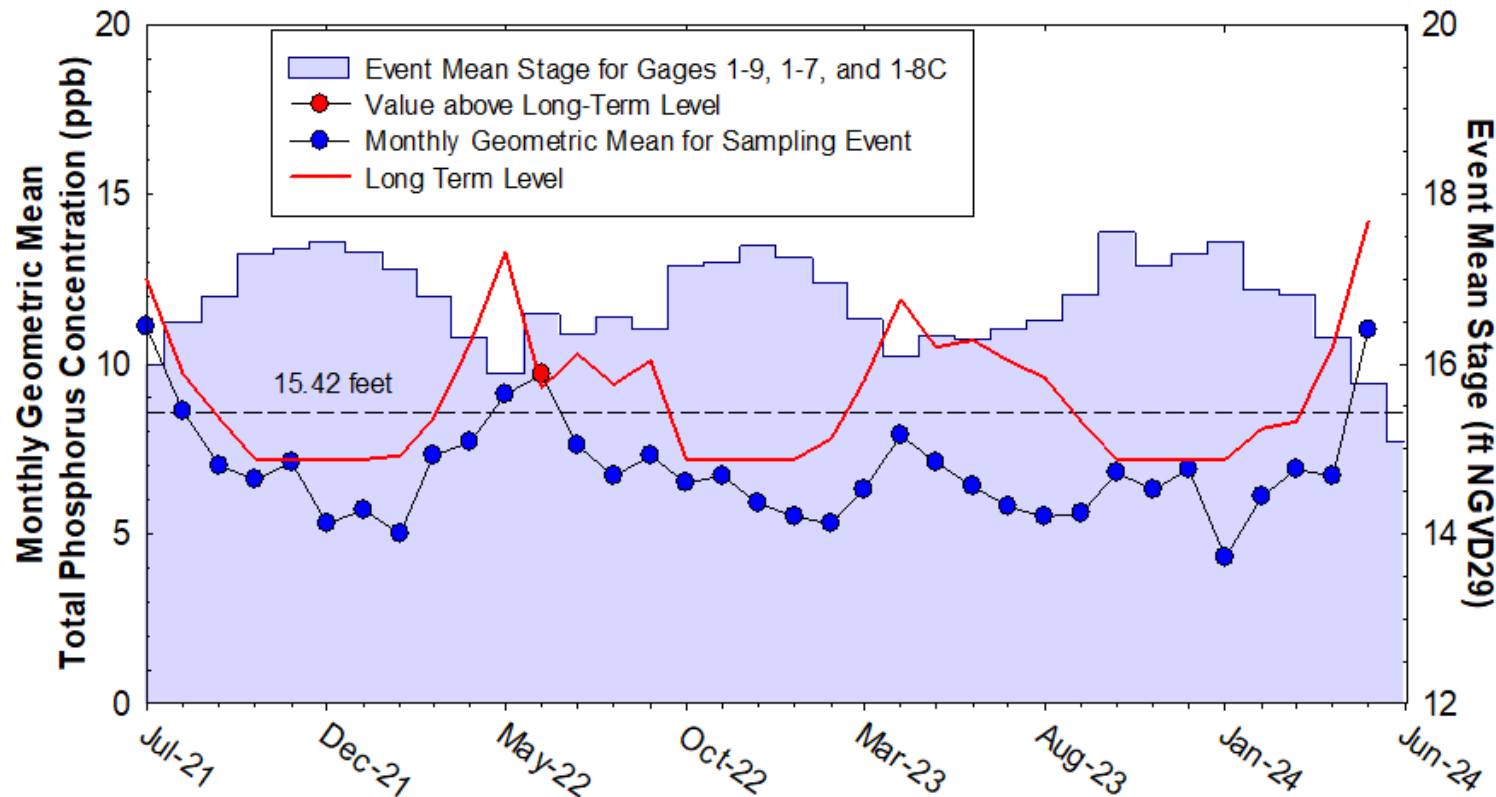
Note: 17.14 ft NGVD29 was used for the long-term level calculation when the average stage of the month exceeded the threshold of 17.14 ft.

In April, May, and June, 2, 8, and 14 out of 14 samples, respectively, were not collected due to dry conditions.

For June, the average stage on sampling days was 15.09 feet NGVD29, less than 15.42 feet, thus the long-term level was not applicable.

A.R.M Loxahatchee National Wildlife Refuge

Monthly Total Phosphorus Geometric Mean Concentrations



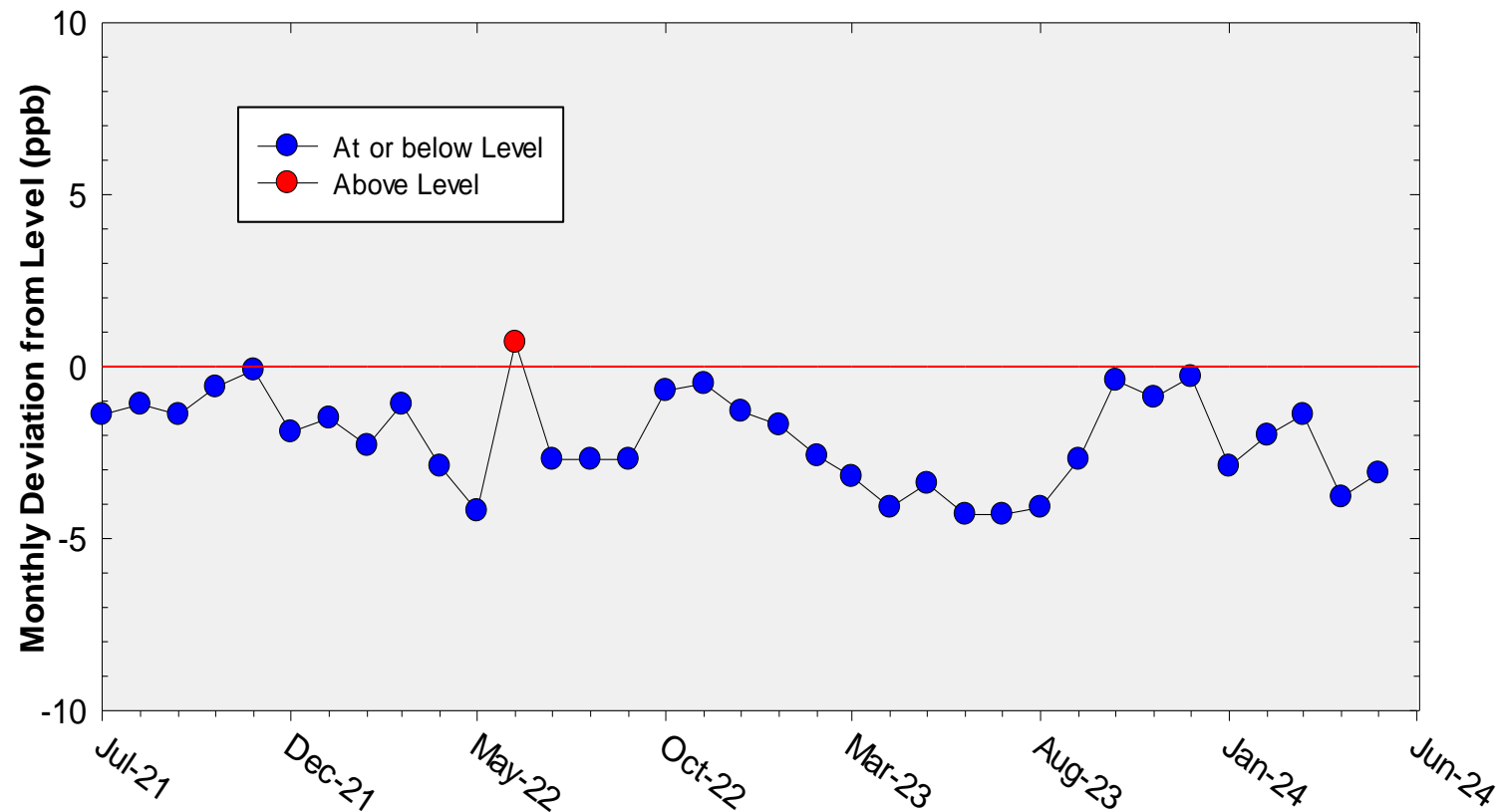
36-Month Average TP Geometric Mean = 6.9 ppb

36-Month Average TP Long-term Level is = 9.0 ppb

Note: There was no TP data for June 24 because of the dry condition.

A.R.M Loxahatchee National Wildlife Refuge

Deviation of monthly geometric mean total phosphorus concentrations with calculated long-term levels



36-Month Average TP geometric mean = 2.1 ppb below the Long-Term Level.

Note: There was no TP data for June 24 because of the dry condition.

Shark River Slough

TP Concentration Compliance Tracking and Outlook

PROVISIONAL DATA and RESULTS

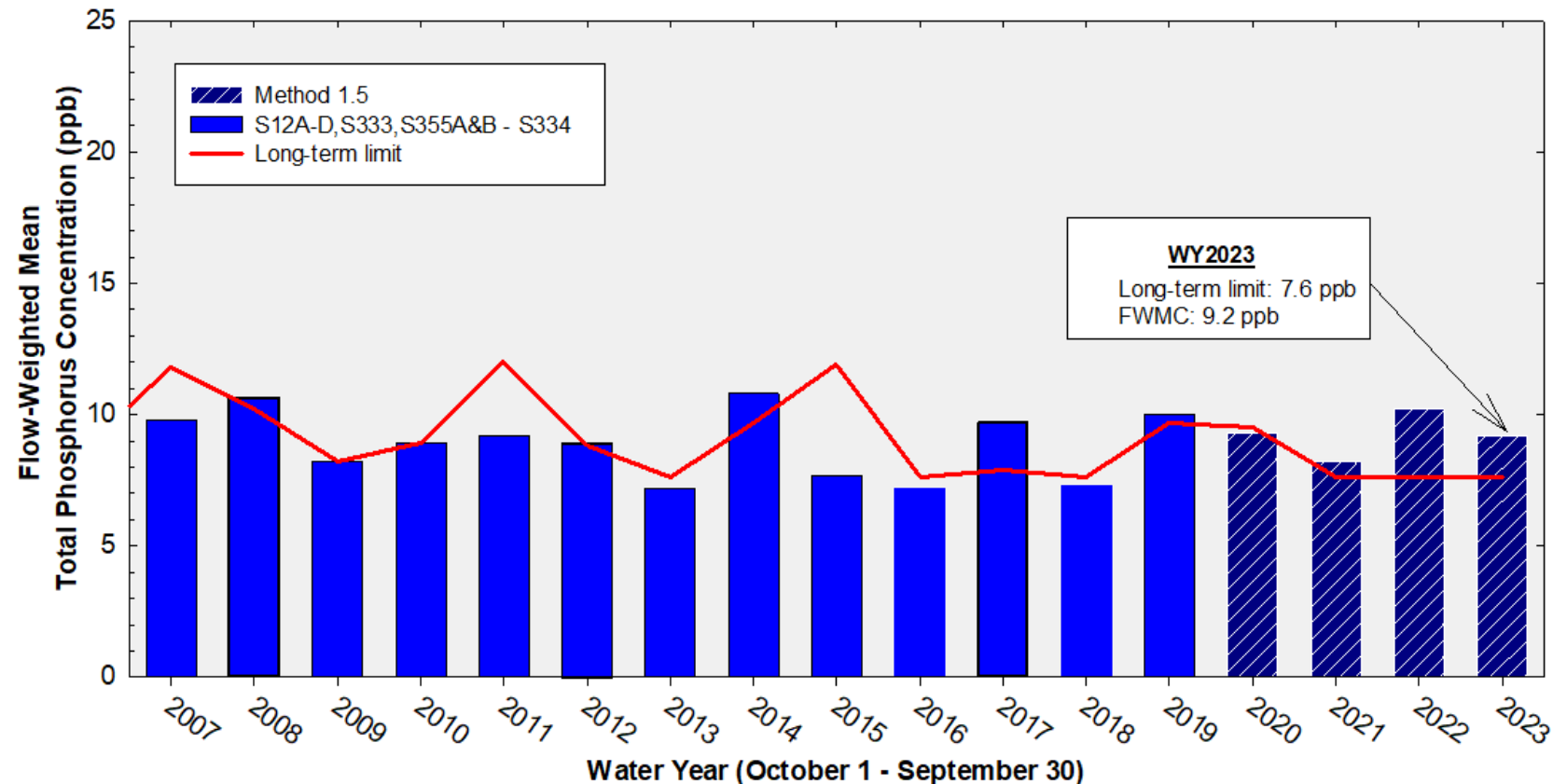
12-Month Period	Total Flow (kac-ft)	Long-Term Limit (ppb) <i>Effective 12/31/2006</i>	Flow-Weighted Mean TP Concentration (ppb)	Percent of Sampling Events Greater than 10 ppb	
				Guideline (%)	Observed (%)
2nd Quarter 2024 Compliance Tracking					
May 2023 - Apr 2024	1,507.8	7.6	7.9	40.1	28.0
Jun 2023 - May 2024	1,499.9	7.6	7.7	40.1	28.0
Jul 2023 - Jun 2024	1,500.0	7.6	8.0	40.1	28.0
Outlook					
Aug 2023 - Jul 2024	1,531.0	7.6	7.9	40.1	20.0
Sep 2023 - Aug 2024	1,534.3	7.6	8.0	40.1	20.0
Oct 2023 - Sep 2024	1,521.7	7.6	8.0	40.1	20.0

Shark River Slough PROVISIONAL RESULTS:

FWMC computed as $S12A + S12B + S12C + S12D + [S333 + S333N + S355A + S355B + \text{minimum of } (S356, S335) - S334]$ using all flow and TP grabs on bi-weekly compliance sampling dates.

S334 flow was not excluded from the flow for long-term limit calculations.

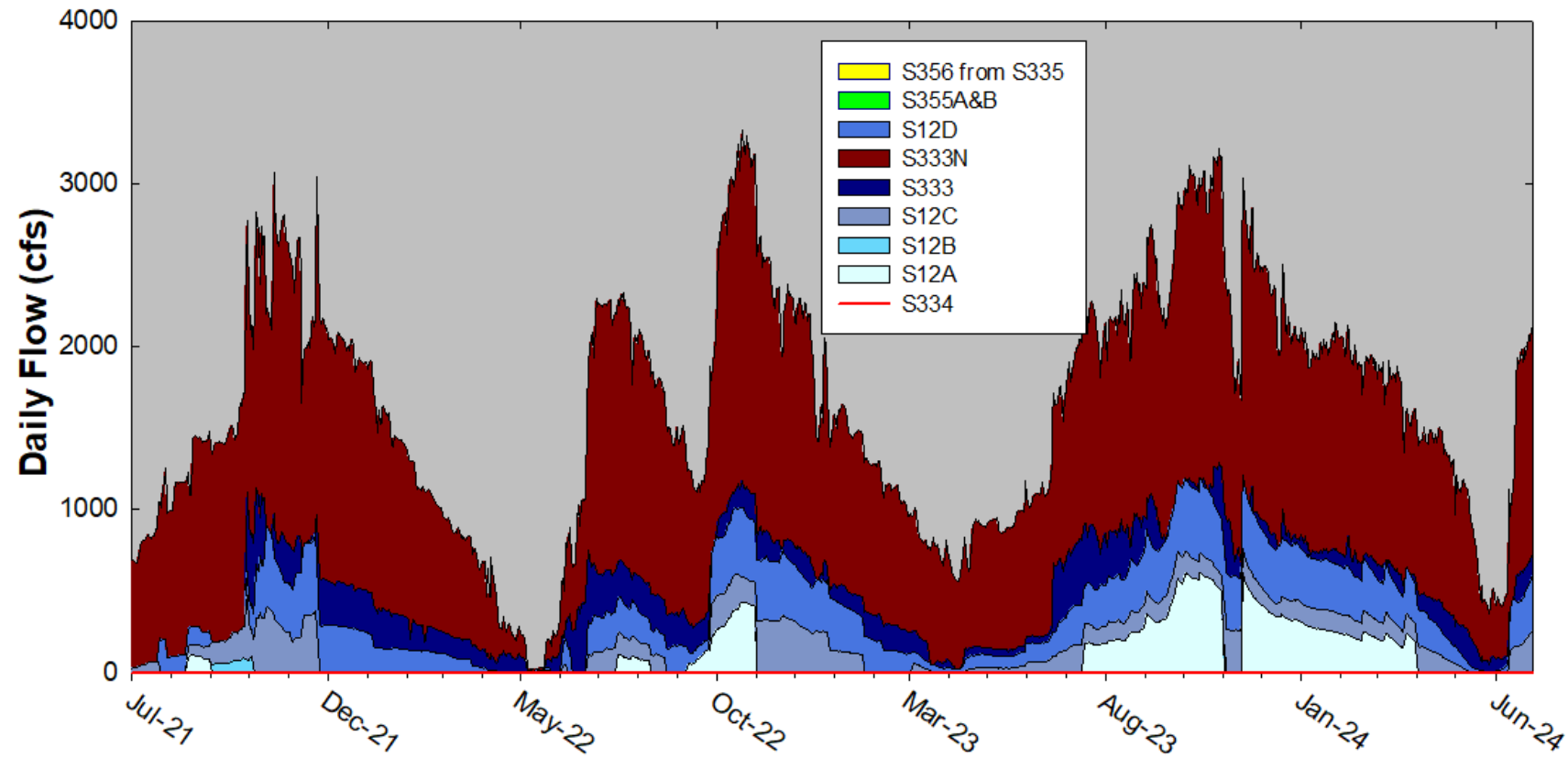
Annual Flow-weighted Mean Concentrations of Inflows to ENP through Shark River Slough



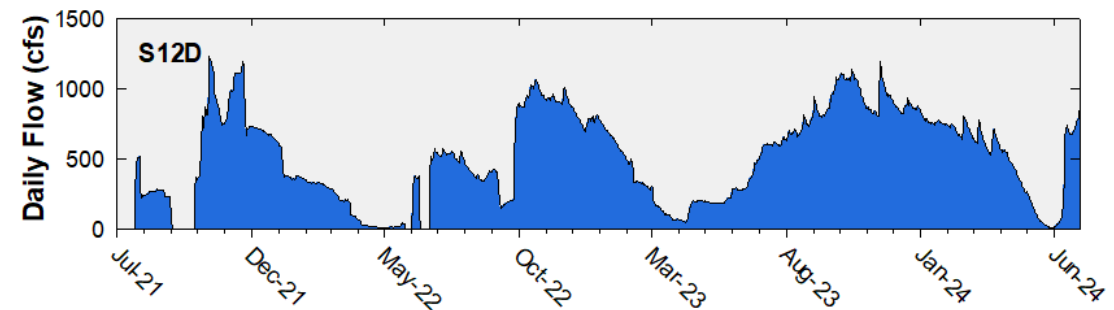
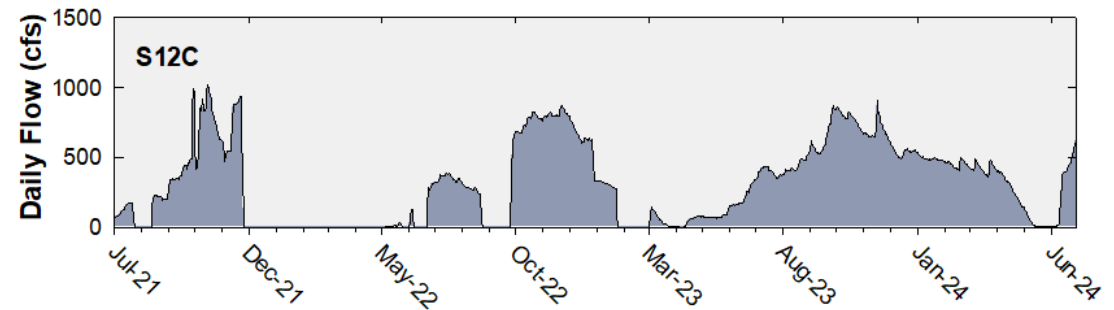
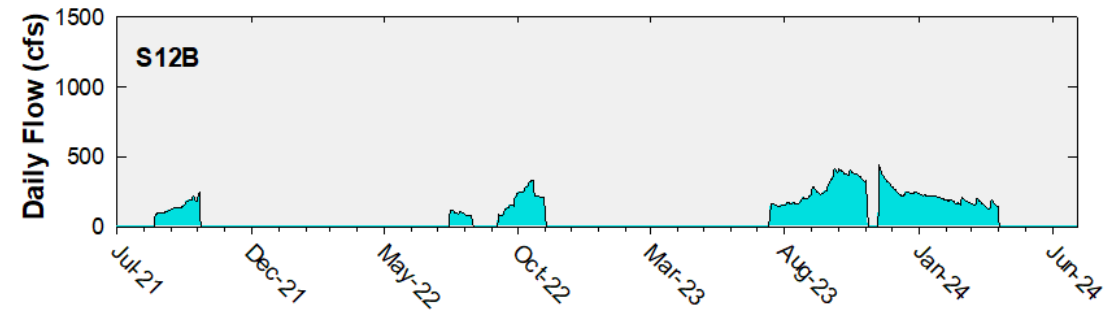
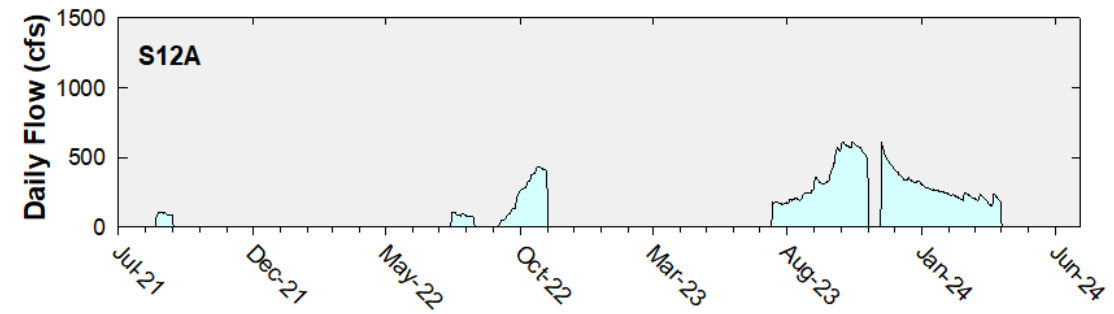
**12-month FWMC at the end of each water year
compared to the TP long-term limit**

Shark River Slough Structure Daily Flows

WY2024 Flow Data for S12s are Provisional.

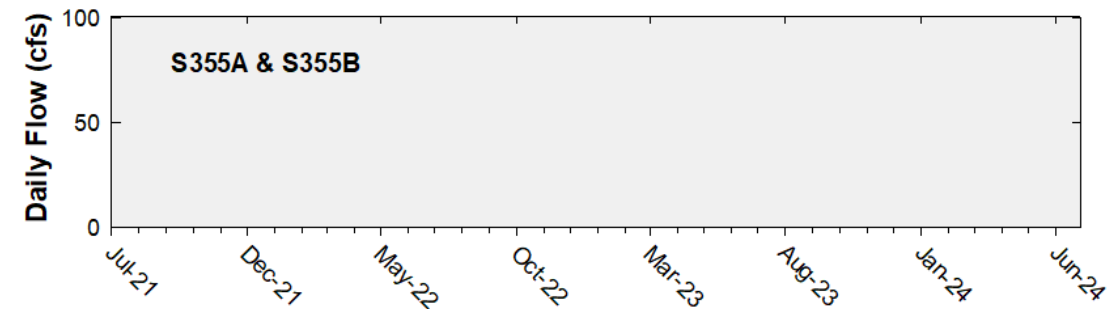
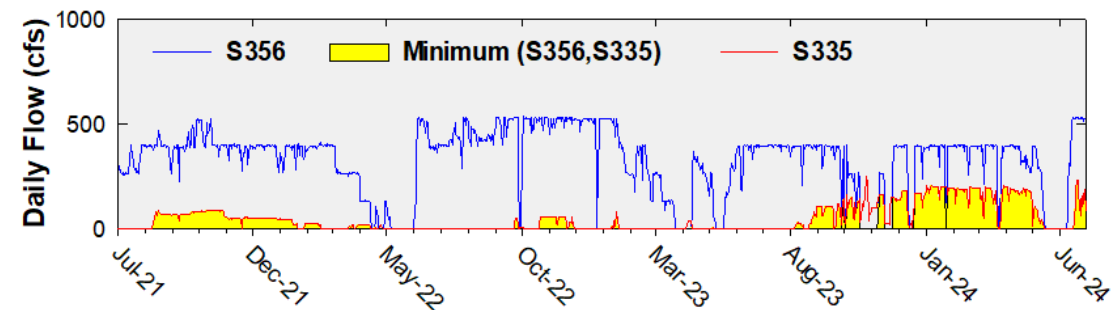
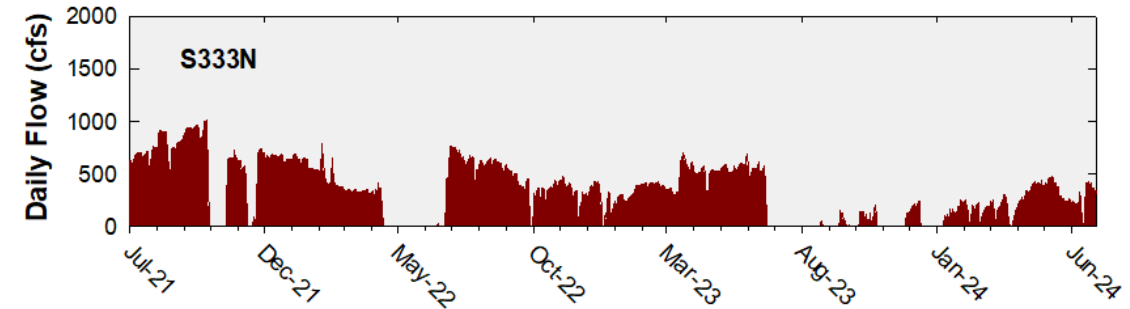
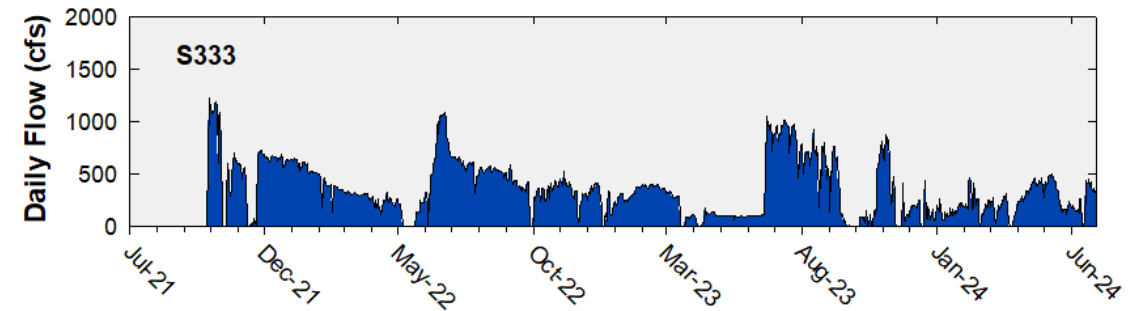


Daily Flows at S12 Structures to Shark River Slough

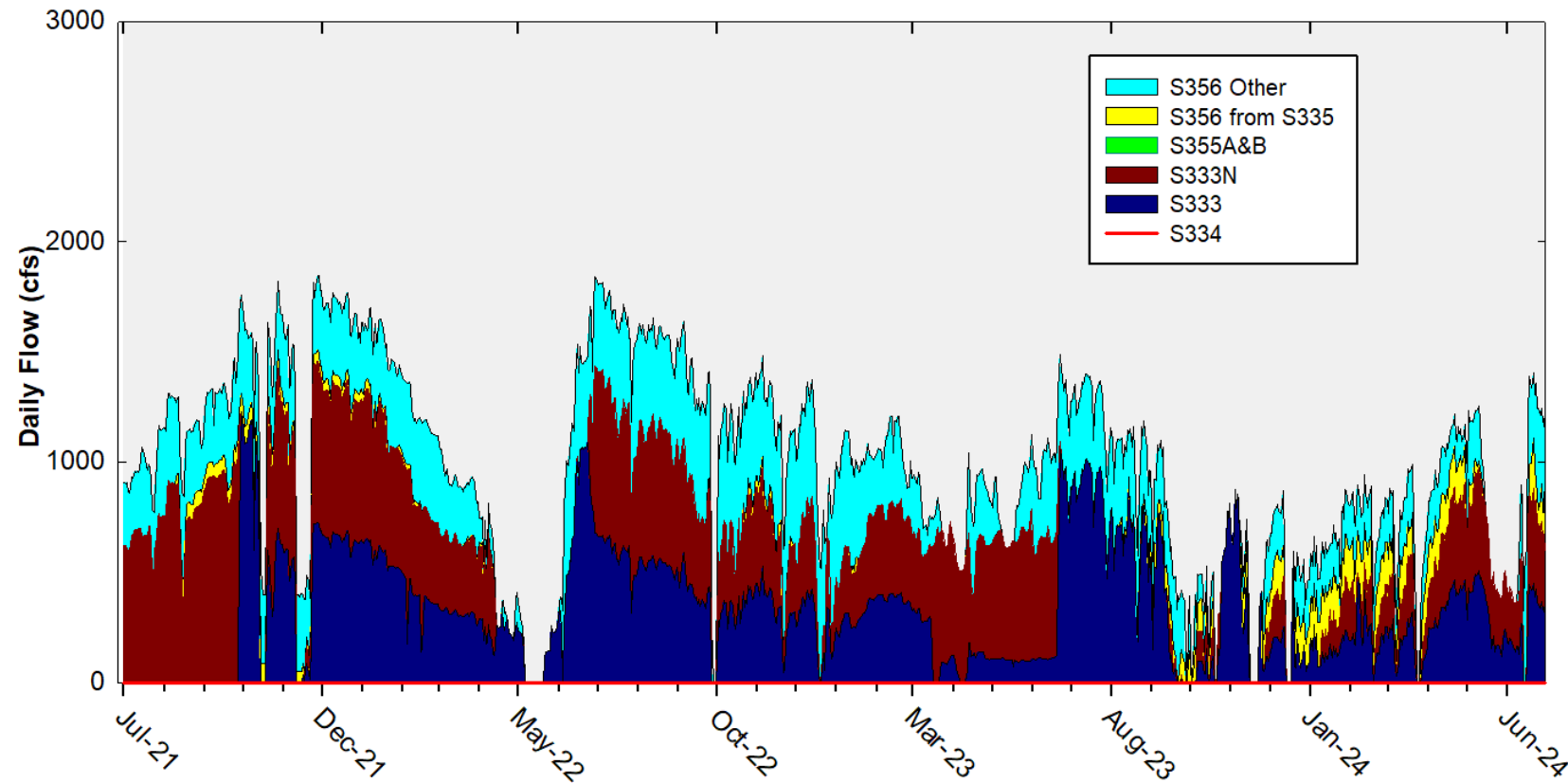


Daily Flows at Individual Inflow Structures to Shark River Slough

(Note: There was no flow at S355A or S355B during the period)

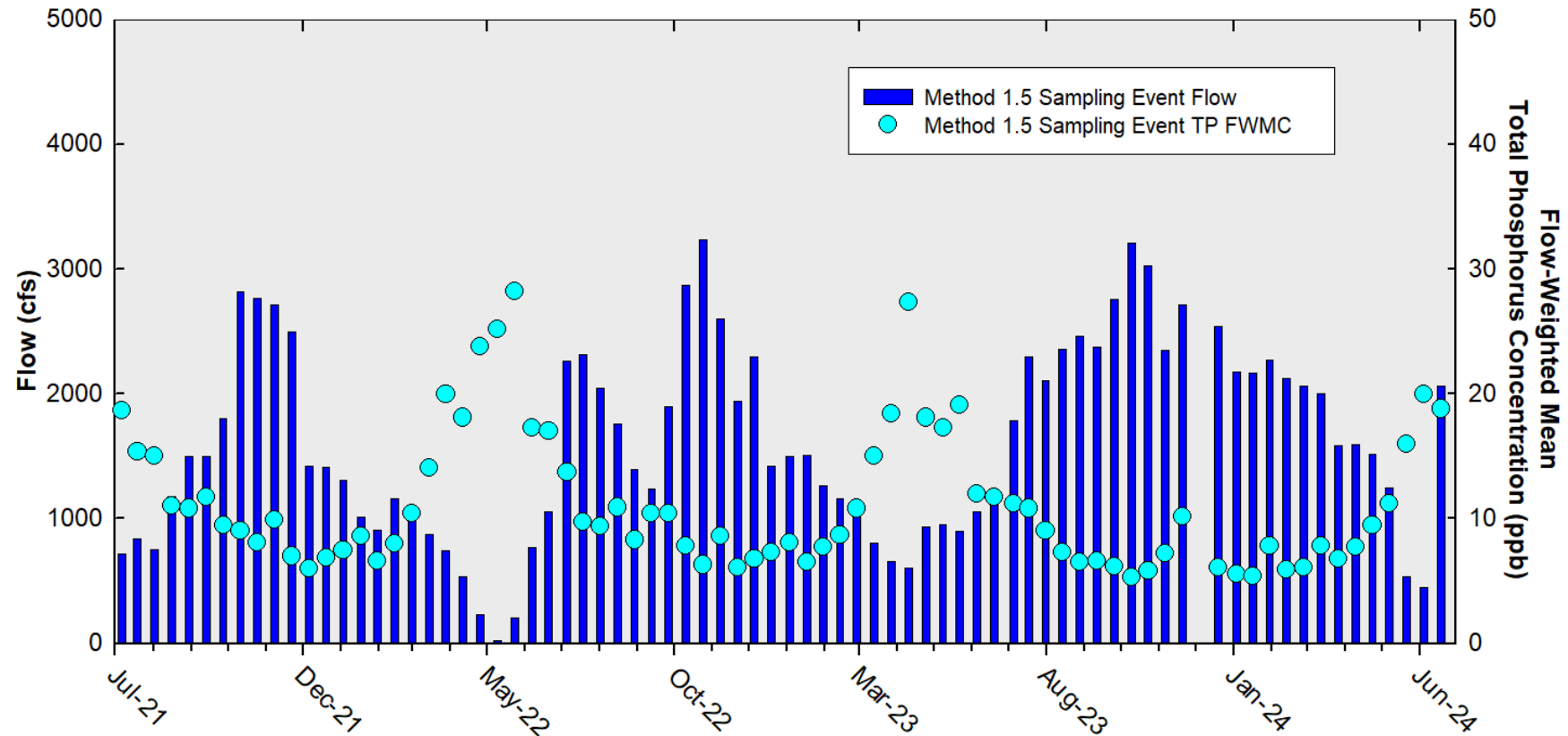


Daily Flows Into Shark River Slough through S333&S333N, S355A&B, and S356 and Out through S334



Shark River Slough

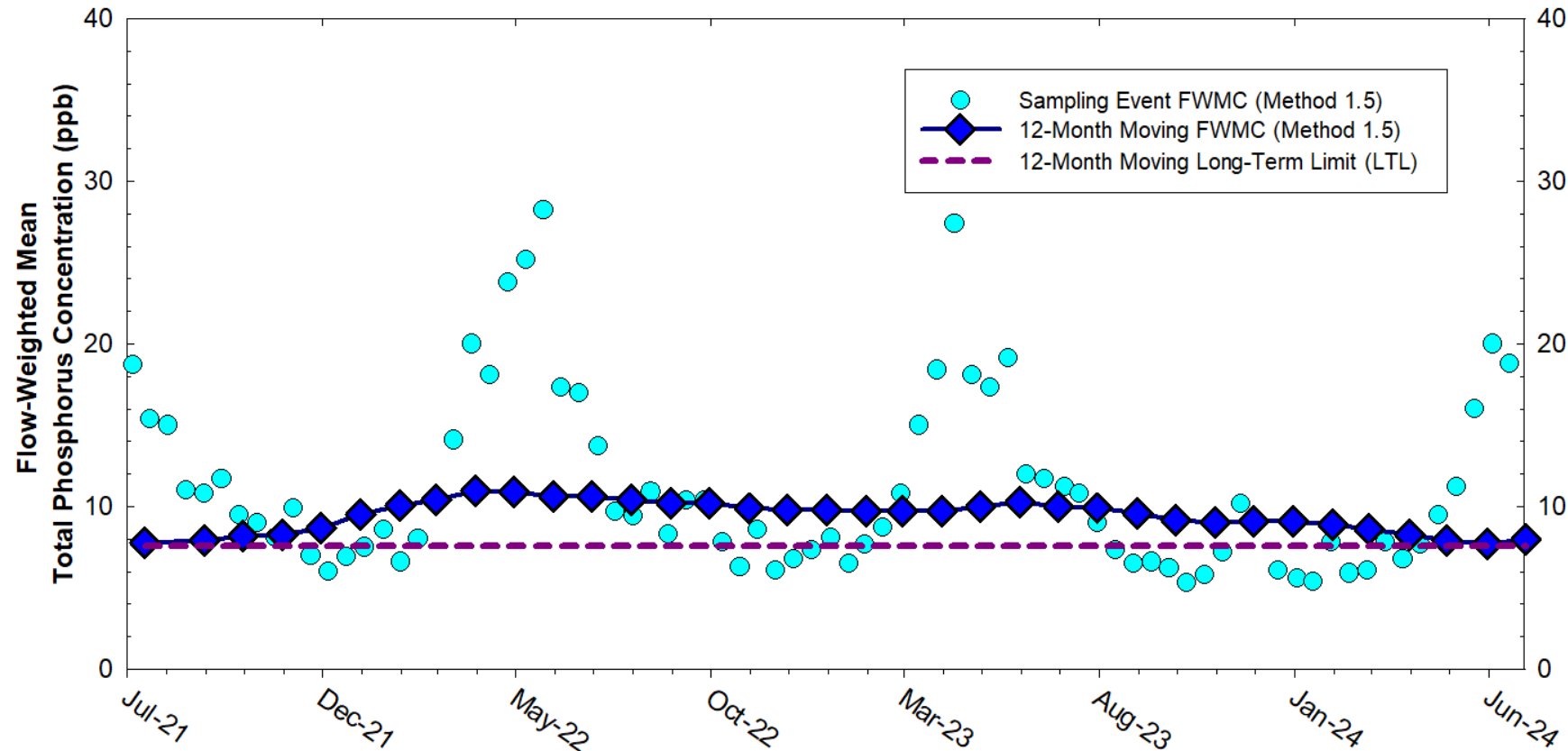
Sampling Event Flow and FWMC



**Flow to Shark River Slough and the corresponding TP FWMCs
for individual sampling events**

Shark River Slough

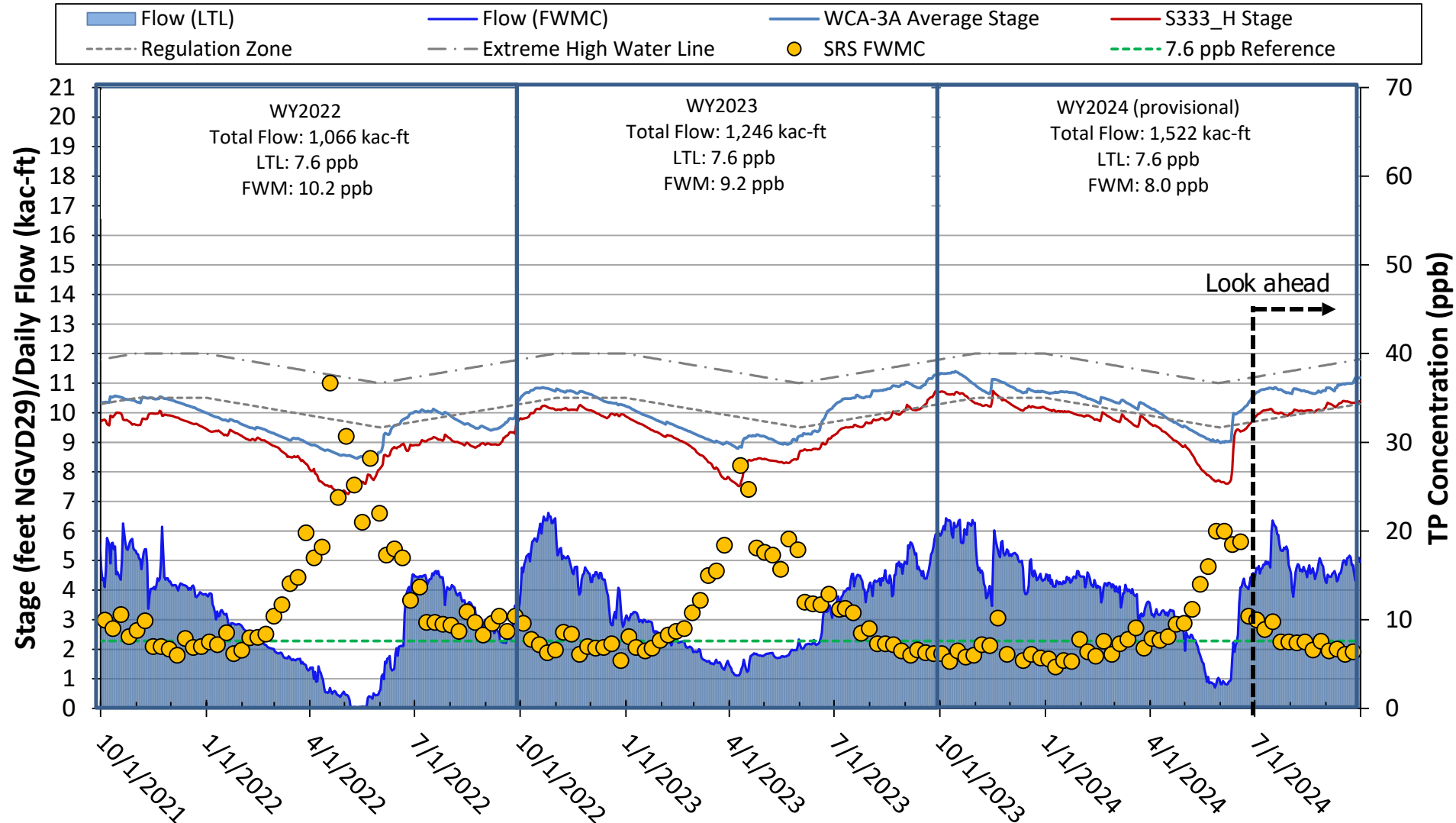
12-month Moving Flow-Weighted Mean TP and Long-Term Limit



The composite TP concentration and 12-month FWMC at the end of each month for each sampling event

Stage, Flow, and TP FWMC

Inflows to ENP through Shark River Slough



Taylor Slough and Coastal Basins

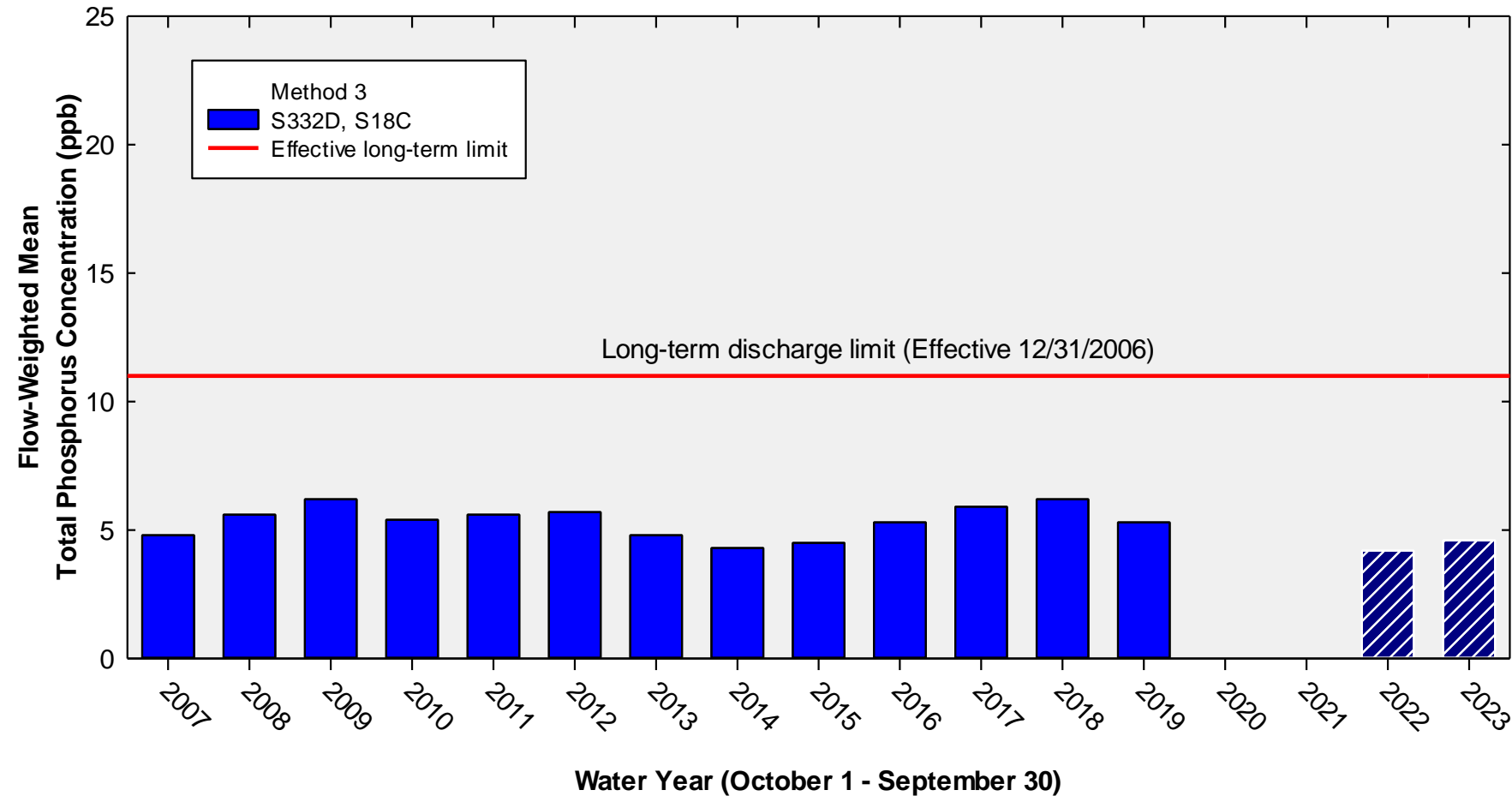
TP Concentration Compliance Tracking

12-Month Period	Total Flow (kac-ft)	Flow-Weighted Mean TP Concentration in ppb LTL = 11.0 ppb Effective 12/31/2006	Observed Percent of Sampling Events Greater than 10 ppb Guideline = 53.1%
May 2023 - Apr 2024	402.0	4.9	0.0
Jun 2023 - May 2024	397.1	4.9	0.0
Jul 2023 - Jun 2024	409.5	4.9	0.0

FWMC computed as [(S332D-S332DX1-S328)+S328+G737+S18C] using all flow and TP grabs on weekly sampling.

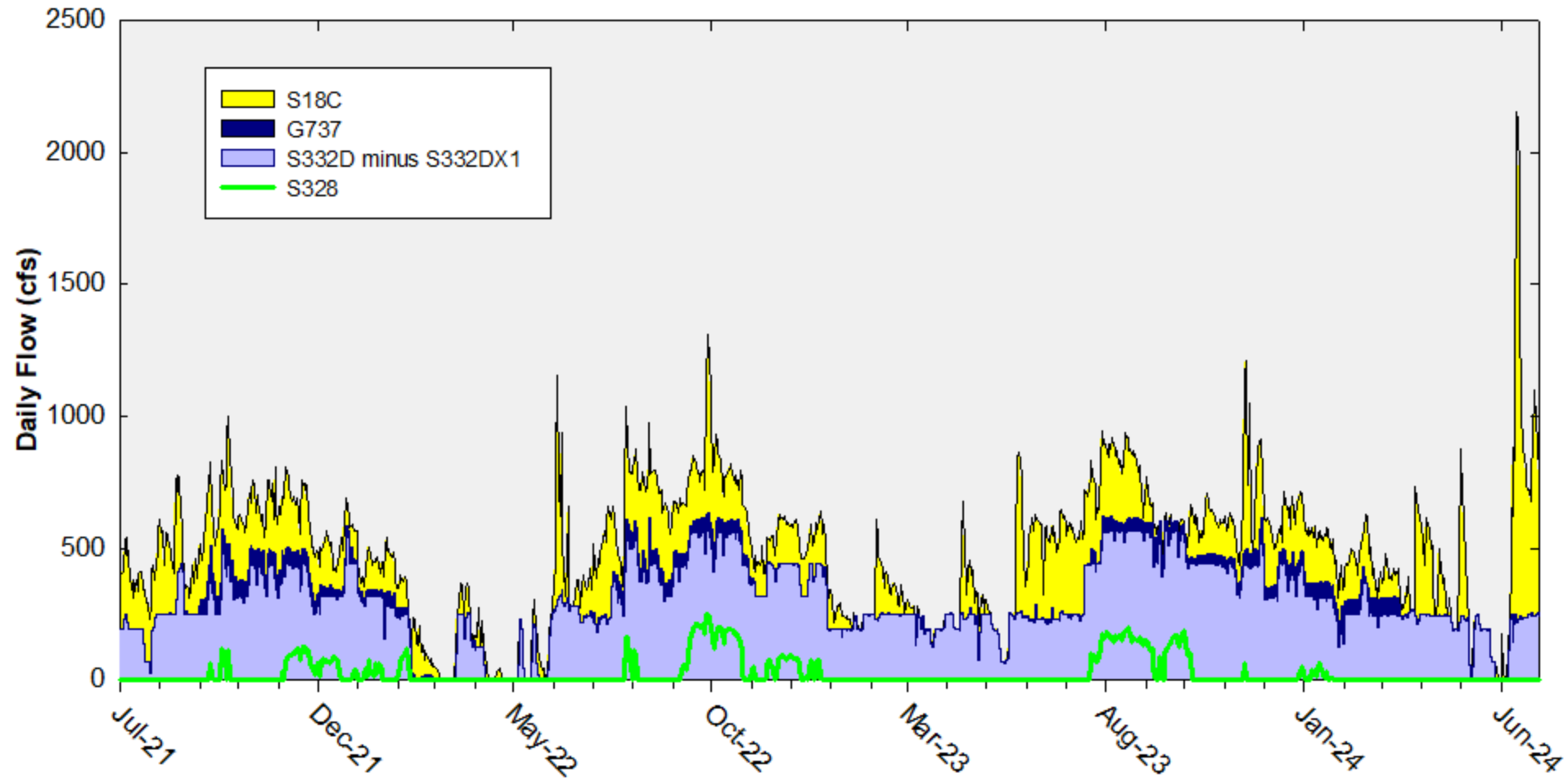
Total flow is (S332D-S332DX1)+G737+S18C]

Annual Flow-Weighted Mean Concentrations of Inflows to the ENP through Taylor Slough and Coastal Basins

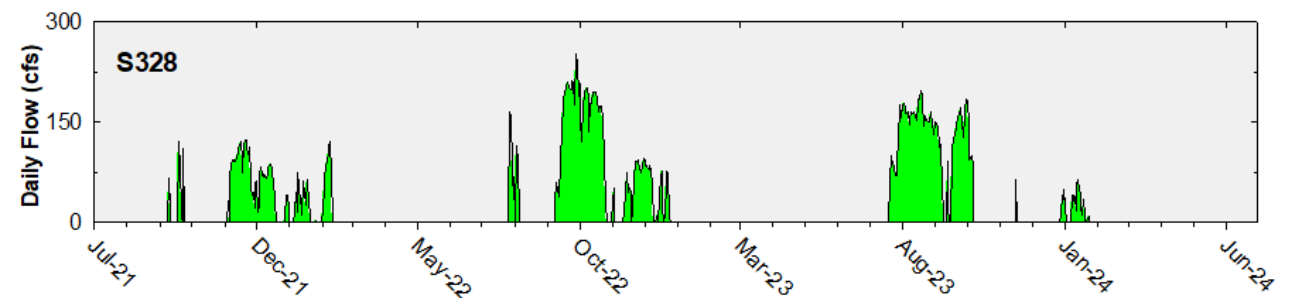
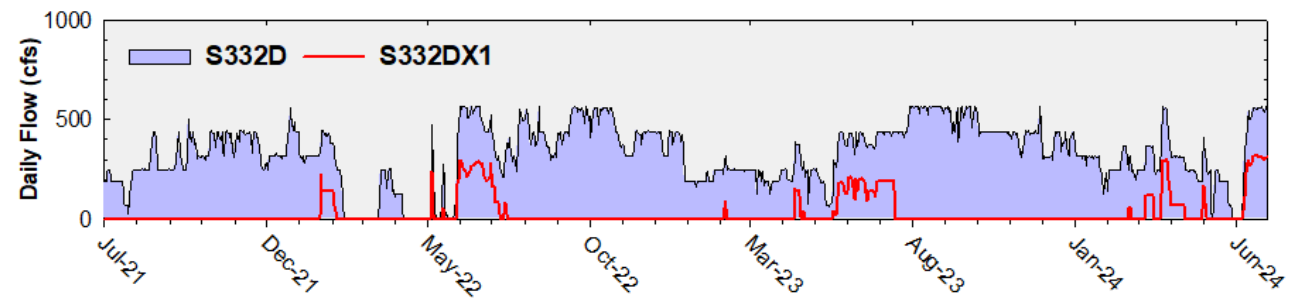
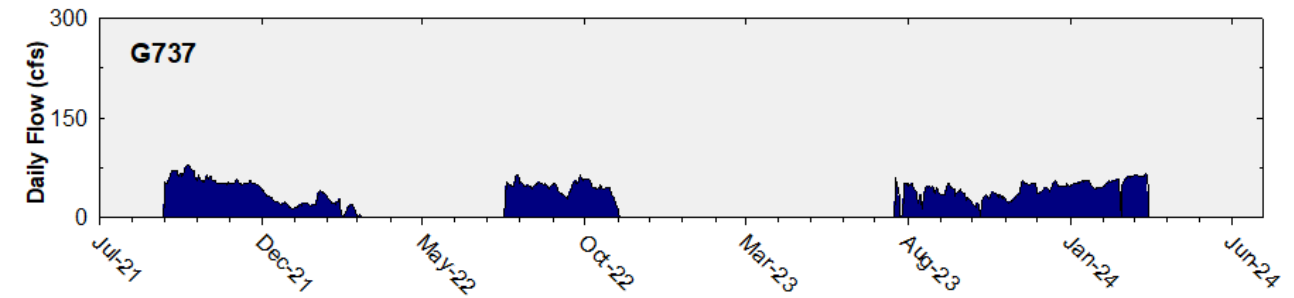
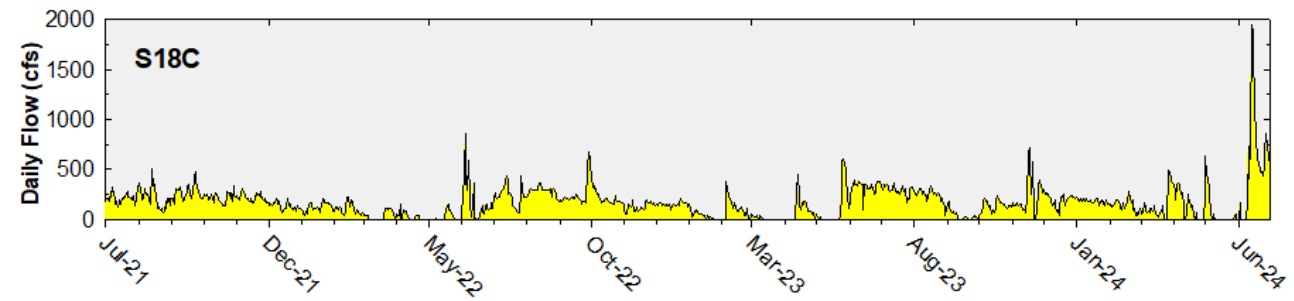


The 12-month FWMC at the end of each water year compared to the 11 ppb long-term TP limit

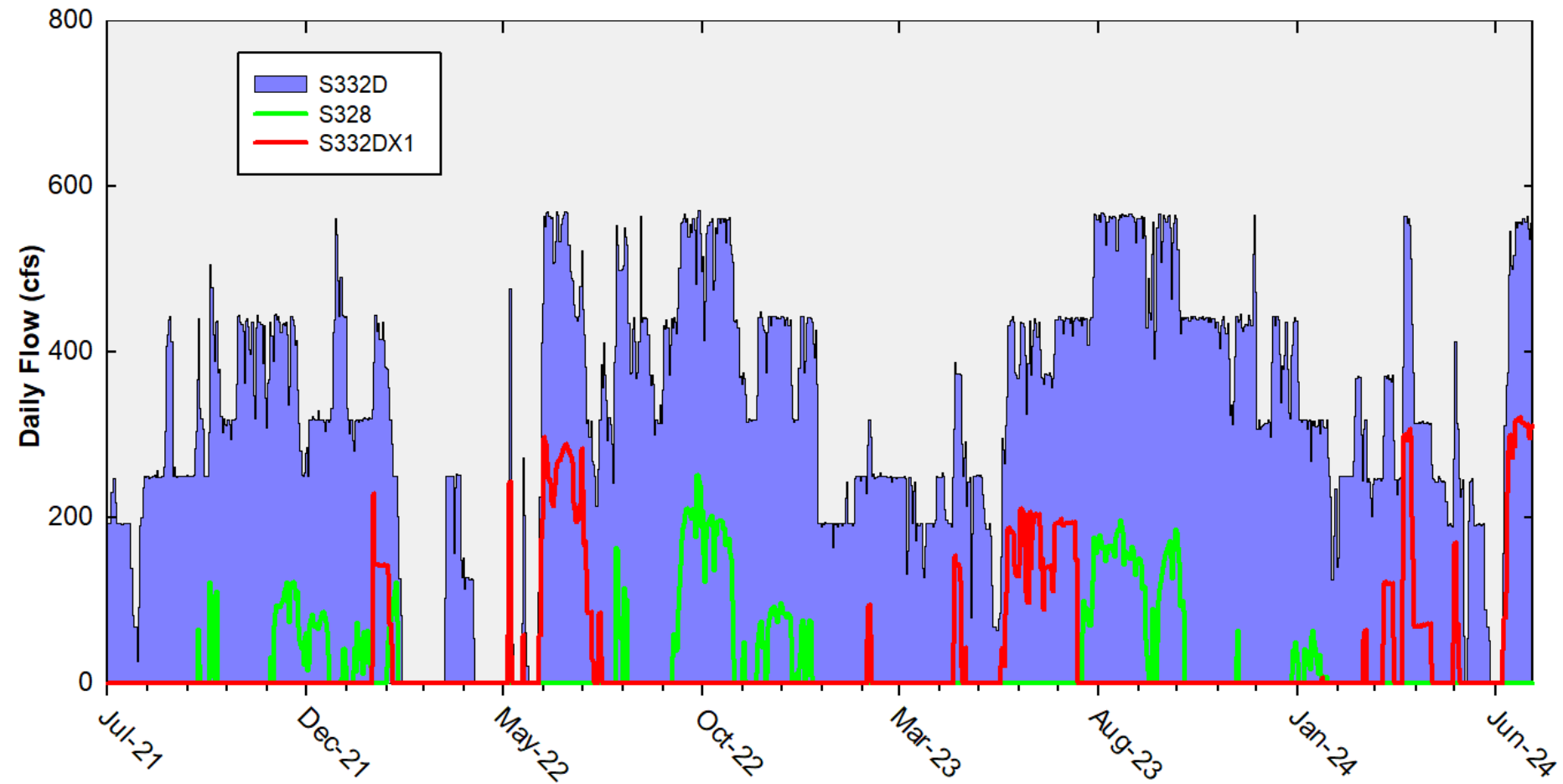
Daily Flows at Taylor Slough and Coastal Basins Structures into ENP



Daily Flows at Individual Taylor Slough and Coastal Basins Structures

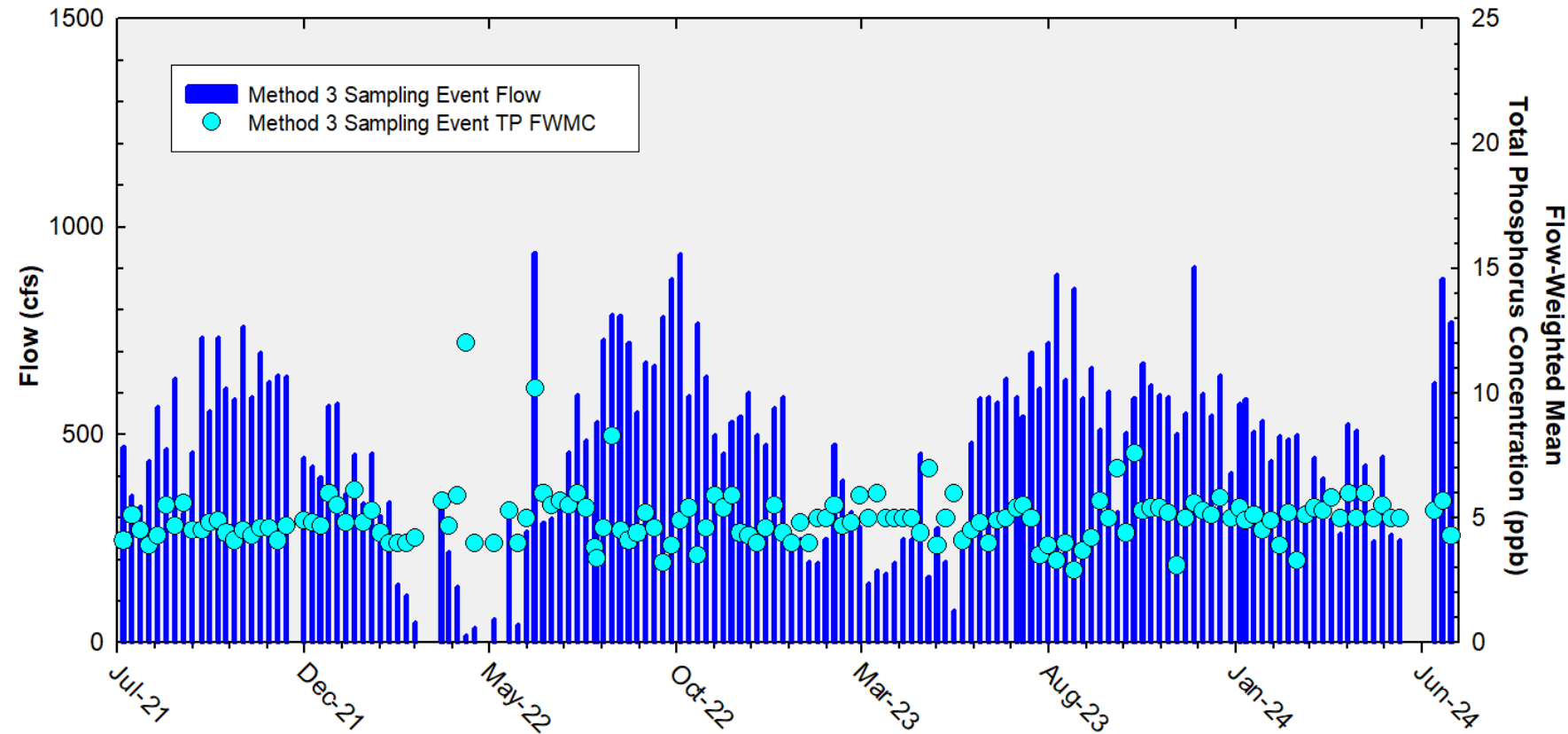


Daily Flows In and Out of S332D Flowway



Taylor Slough and Coastal Basins

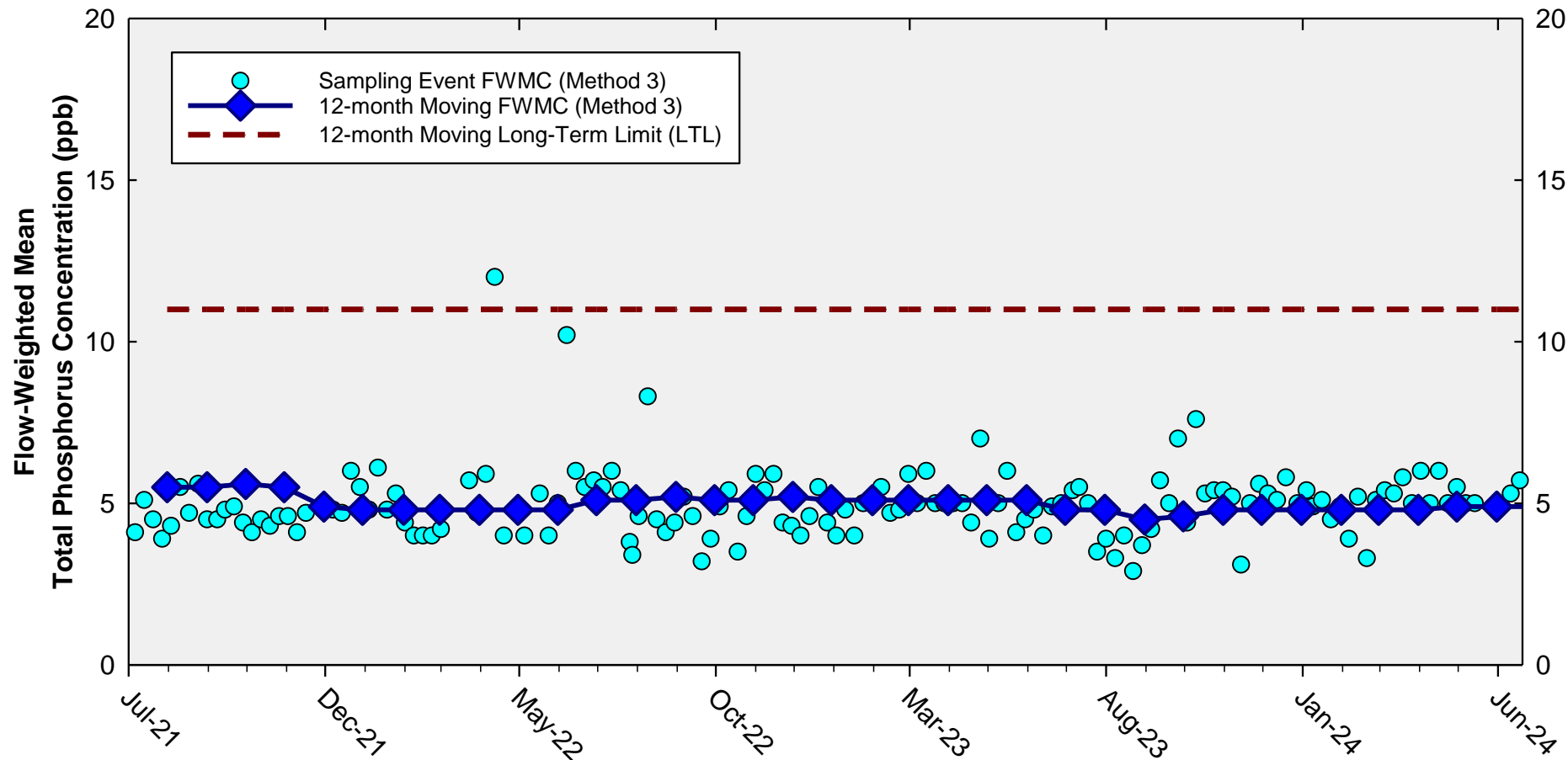
Sampling Event Flow and FWMC



Flow at Taylor Slough and Coastal Basins structures and the corresponding TP FWMCs for individual sampling events

Taylor Slough and Coastal Basins

12-month Moving Flow-Weighted Mean TP and Long-Term Limit



The 12-month FWMC at the end of each month and the composite TP concentration for each sampling event

Thank You

