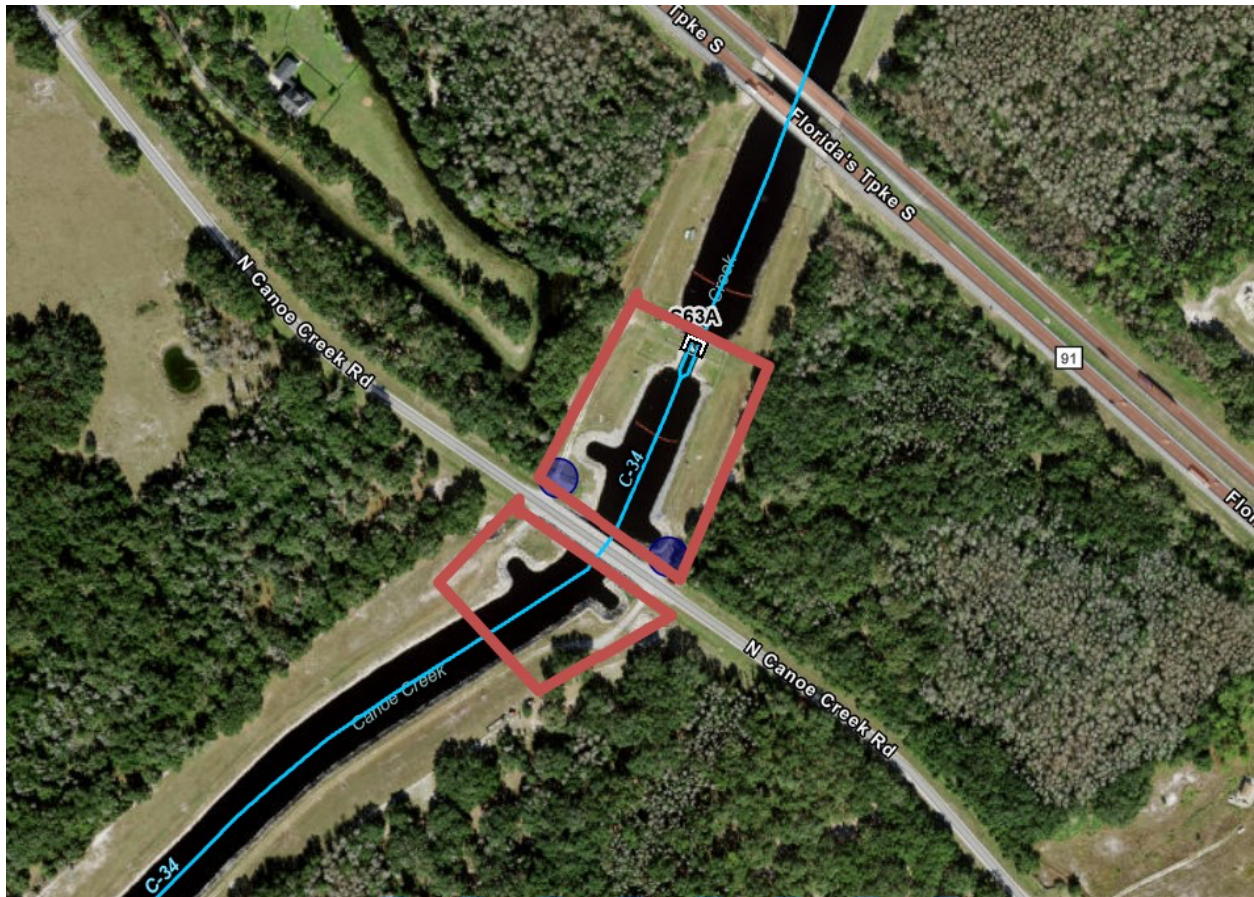


Pedestrian and parking access will be temporarily closed to the public at S-63A on the C-34 Canal/Canoe Creek



All pedestrian access points and parking areas near the S-63A structure on the C-34 Canal/Canoe Creek on both sides of North Canoe Creek Road/County Road 523 will be closed to the public due to a South Florida Water Management District (District) maintenance project.

The project will begin on Wednesday, May 14, 2025, and is expected to be complete in September 2025.

The public will not be able to access the C-34 Canal/Canoe Creek from all access points off of North Canoe Creek Road/County Road 523. The area outlined in red above is the project area and will be closed to public access during construction. Please plan accordingly.

If you have questions, please email AskUs@sfwmd.gov or visit [SFWMD.gov/Recreation](https://www.sfwmd.gov/Recreation) for more information.