

S333 Working Group Update

Jodie Hutchins, P.E., SFWMD

Technical Oversight Committee Meeting
October 1, 2024

S333 Working Group Members

South Florida Water Management District

Everglades National Park

United States Army Corps of Engineers

Florida Department of Environmental Protection

Arthur R. Marshall Loxahatchee National Wildlife Refuge

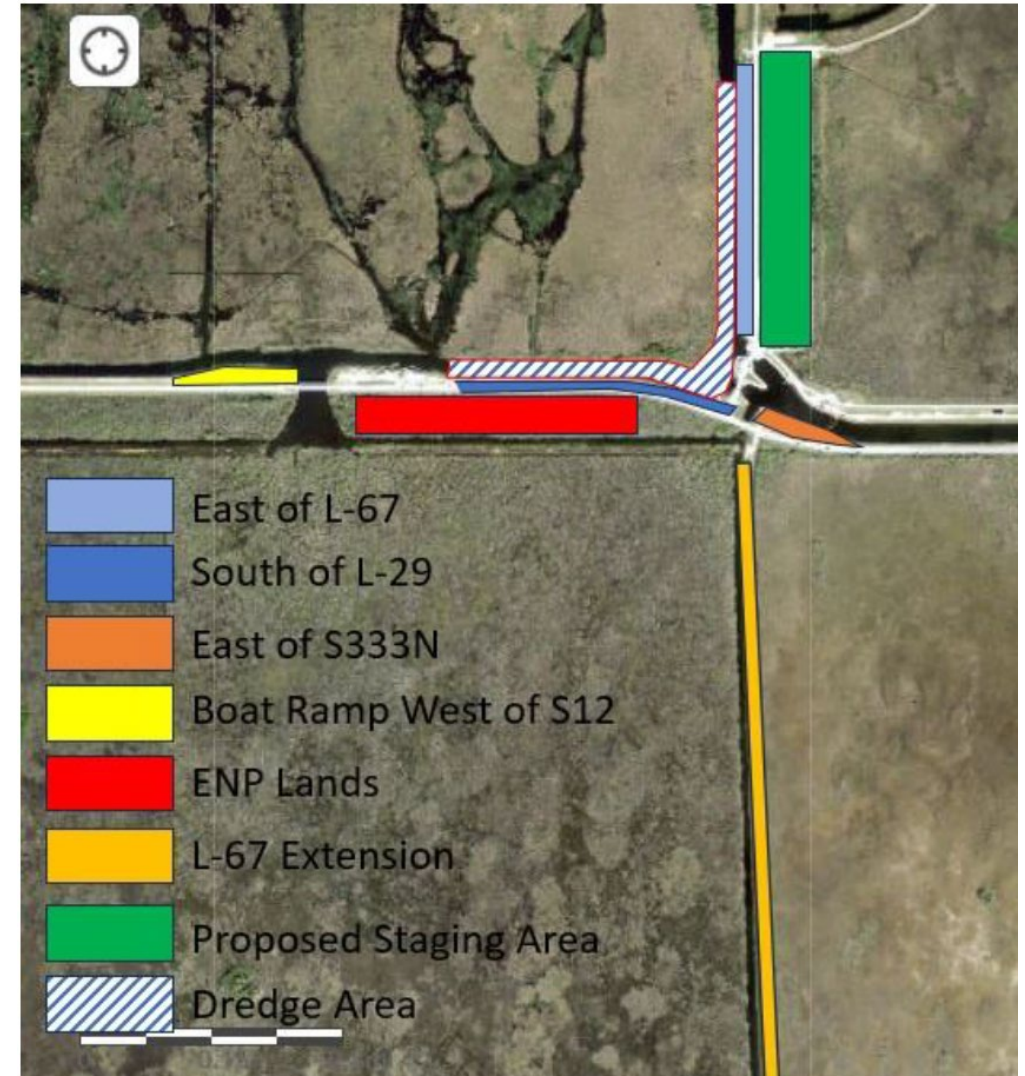
S333 Working Group Recommendations

- **Removal of Canal Sediments**
 - 1,500 feet upstream of S333 complex in the L-67A and L-29 Canal
 - S333 Complex intake bay
- **Low-Sill Weirs (Geotubes)**
 - Conceptualized locations shown in figure
- **Monitoring and Assessment Plan**
 - Evaluate the effectiveness
 - Identify optimization opportunities
 - Inform future actions



Highlights on Progress

- ✓ **Preliminary Survey Complete**
 - 30,000 CY of material to be dredged
- ✓ **Geotechnical Investigation Underway**
 - Preliminary results indicate even greater dredging quantities
- ✓ **Final Permits Underway**
 - FDEP and USACE permit required modification
- ✓ **Intermediate Project Design and Specifications Complete**
- ✓ **Low-Sill Weir Round 1 Modeling Complete & Round 2 Underway**
 - 3D modeling confirmed depositional velocities
 - Check for flood control operations and navigation impacts
- ✓ **Monitoring and Assessment Plan Complete**



Schedule

			2024				2025				2026
			Jan - Mar	Apr - Jun	Jul - Sep	Oct - Dec	Jan - Mar	Apr - Jun	Jul - Sep	Oct - Dec	Jan - Mar
Task 1	Maintenance Dredging and 2 Short-Height Low Sill Weirs	Preliminary Survey (COMPLETE)									
		Final Permits ⁽¹⁾ (IN PROGRESS)									
		Geotechnical Investigations and Final Survey (IN PROGRESS)									
		Final Project Design and Specifications (IN PROGRESS)									
		Solicitation									
		Contract Execution									
		Construction									
Task 2	Low Sill Weirs (Full Height)	H&H Design Modeling - Round 1 (COMPLETE)									
		H&H Design Modeling - Round 2 (IN PROGRESS)									
		Final Project Design and Specifications									
		Final Permits									
		Solicitation (5 Weirs) ⁽²⁾									
		Contract Execution (5 Weirs) ⁽²⁾									
		Construction (5 Weirs) ⁽²⁾									
Task 3	Monitoring and Assessment	Draft Monitoring and Assessment Plan (COMPLETE)									
		Final Monitoring and Assessment Plan (COMPLETE)									
		FDEP Grant Agreement									
		Contractual SOW Development									
		FDEP Grant Funding Available									
		Contract Execution									
		Implement Monitoring and Assessment Plan									

⁽¹⁾ FDEP and USACE Permit Application Modification Required

⁽²⁾ Includes raising the two "Short-Height" weirs in Task 1 to the final weir heights based on Round 2 H&H Modeling results and installing three additional low-sill weirs.

Schedule contingent upon expedited permitting and conducive construction conditions

QUESTIONS?

Thank you!