

S333 Working Group Update

Jodie Hutchins, P.E., SFWMD

Technical Oversight Committee Meeting
December 3, 2024

S333 Working Group Members

South Florida Water Management District

Everglades National Park

United States Army Corps of Engineers

Florida Department of Environmental Protection

Arthur R. Marshall Loxahatchee National Wildlife Refuge

S333 Working Group Recommendations

- **Maintenance Dredging – Task 1**
 - 1,500 feet upstream of S333 complex in the L-67A and L-29 Canal
 - S333 Complex intake bay
 - 2 Short-height low-sill weirs
- **Low-Sill Weirs – Task 2**
 - Conceptualized locations shown in figure
 - Constructed to finished elevation
- **Monitoring and Assessment Plan – Task 3**
 - Evaluate the effectiveness
 - Identify optimization opportunities
 - Inform future actions



Highlights on Progress

✓ **Preliminary Survey Complete**

- 34,000 CY of sediments to be dredged. Over 3x the amount identified in 2022 sediment study.

✓ **Geotechnical Investigation and Final Survey Complete**

- Confirmed 48,000 CY of sediments to be dredged. Over 4x the amount identified in 2022 sediment study.

✓ **Site Alternatives Evaluation Complete**

- Limited sites available for the Dredged Material Management Area (DMMA)

✓ **Revised Permit Applications with Intermediate Project Design and Specifications Complete**

- Project required re-design due to the increase in sediments and DMMA site constraints

✓ **Final Project Design and Specifications Underway to Support Final Permits**

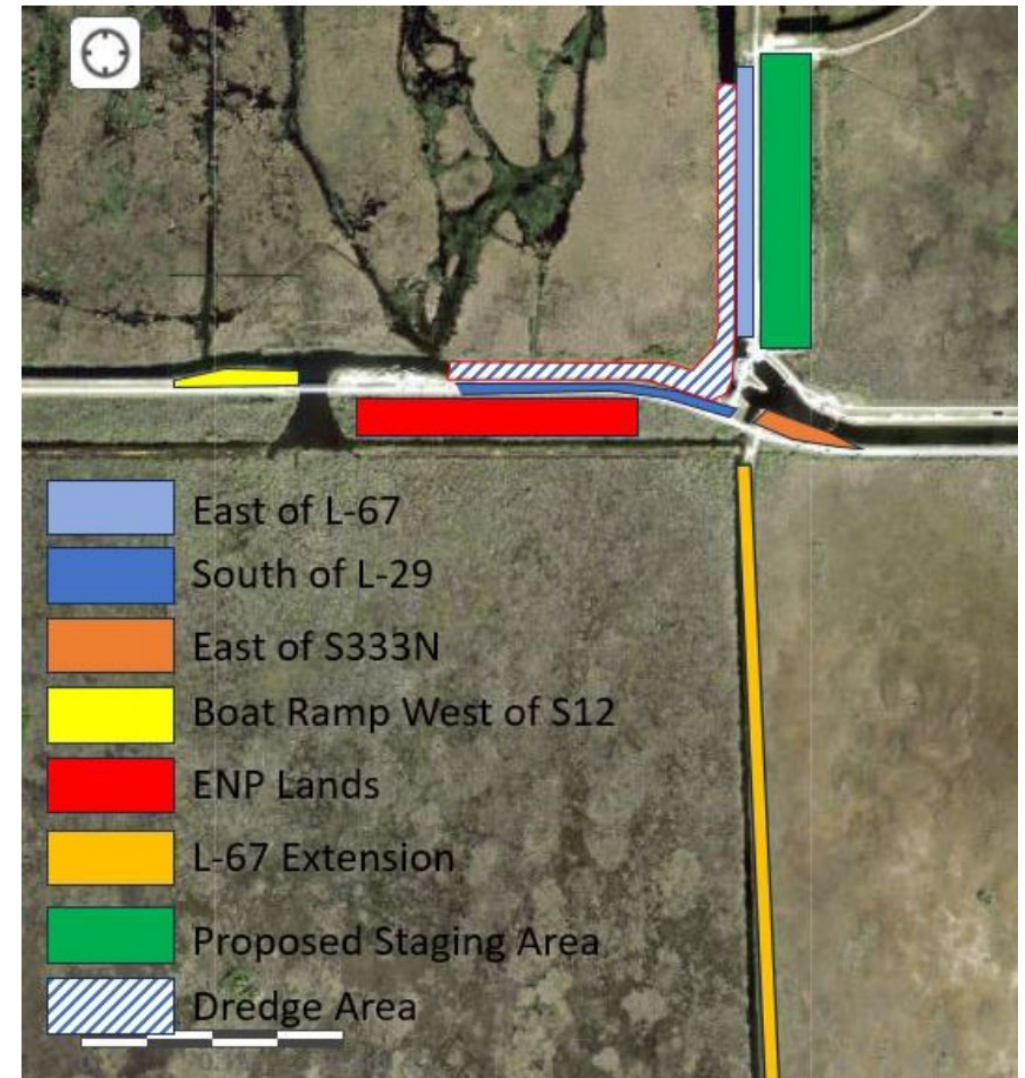
✓ **Low-Sill Weir Round 1 Modeling Complete & Round 2 Underway**

- 3D modeling confirmed depositional velocities
- Confirmed no adverse flood control operations and navigational impacts
- Update modeling based on geotechnical and final survey results

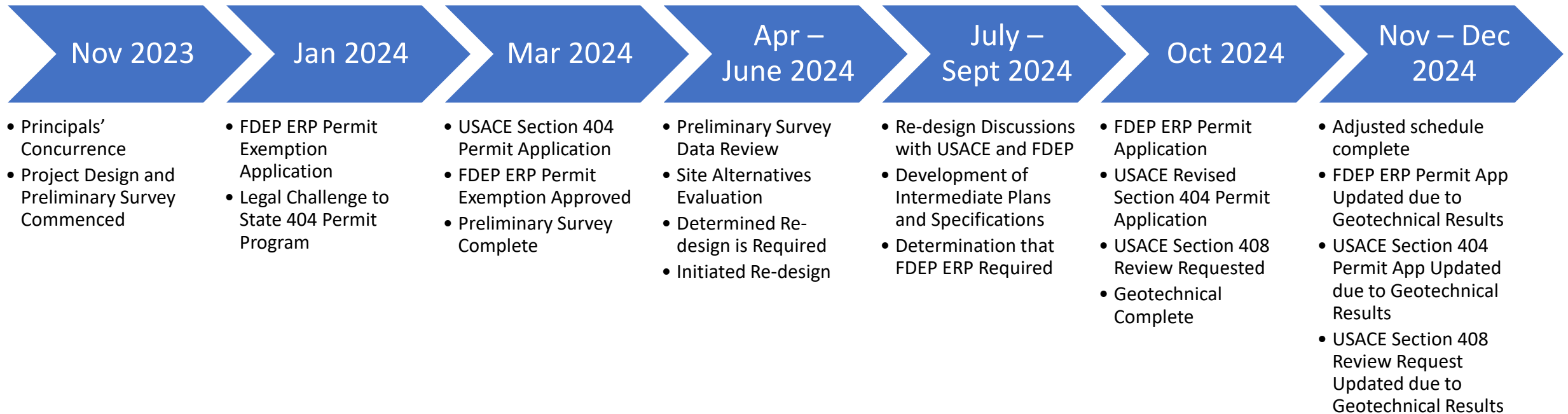
✓ **Monitoring and Assessment Plan Complete**

DMMA Site Alternatives Evaluation

- East of L-67: Currently occupied by USACE Contract 1A(R)
- South of L-29: Will continue to be utilized for vehicular transit (Narrow, Insufficient Size for DMMA)
- East of S333N: 0.75 Acres (Narrow, Insufficient Size for DMMA)
- Boat Ramp: 1.2 Acres (Narrow, Insufficient Size for DMMA)
- ENP: 8+/- Acres (Not Owned by SFWMD)
- L-67 Extension: (Narrow, Insufficient Size for DMMA, Not Owned by SFWMD)
- Proposed Site: 6.89 Acres



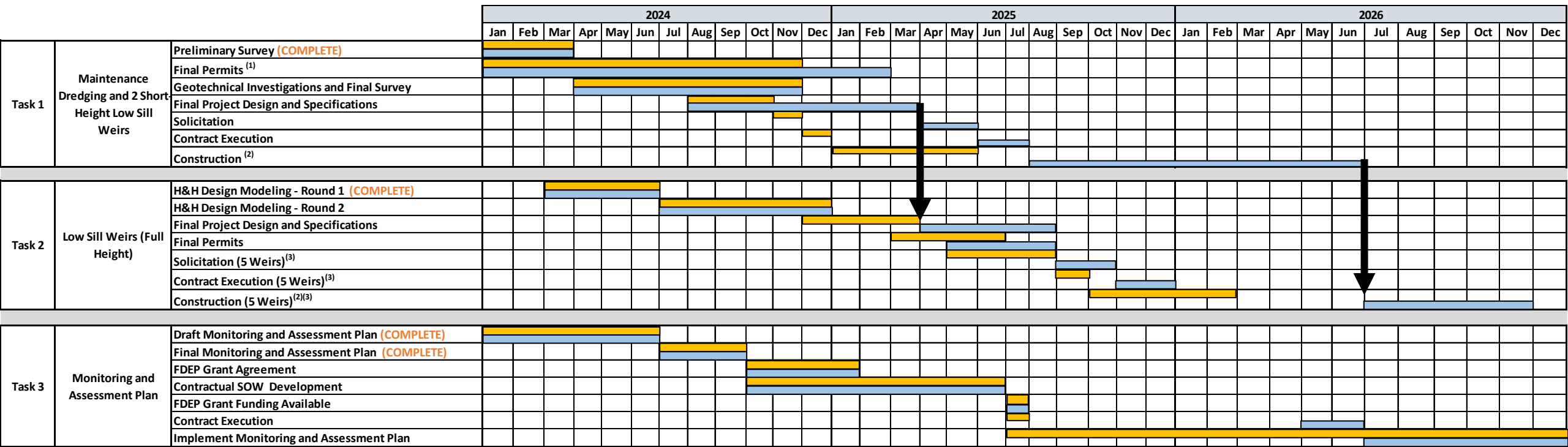
Timeline – Task 1 Maintenance Dredging



Notes:

Section 404 Permit – Wetland Modifications
Section 408 Review – Modifications to CS&F Projects


Re-Design Adjusted Schedule




⁽¹⁾ Permit exemption no longer applicable. Project re-design triggered a new FDEP permit and a revised USACE permit application.

⁽²⁾ The duration for task 1 construction is contingent upon weather and flood control operations. Opportunities to begin task 2 sooner and concurrent with task 1 will be explored during task 2 design.

⁽³⁾ Includes raising the two "Short-Height" weirs in Task 1 to the final weir heights based on Round 2 H&H Modeling results and installing three additional low-sill weirs.

 Original Schedule

 Adjusted Schedule

Schedule contingent upon expedited permitting and conducive construction conditions