



South Florida Water Management District

RESILIENCY COORDINATION FORUM AGENDA

March 26, 2026

9:30 AM

District Headquarters, B-1 Auditorium
3301 Gun Club Road
West Palm Beach, FL 33406

FINAL

1. Opening Remarks - Drew Bartlett, Executive Director, SFWMD
2. Statewide Office of Resilience - Eddy Bouza, Chief Resilience Officer, State of Florida
3. Florida Flood Hub - Charles Jacoby, Ph.D., Associate Director, The Florida Flood Hub for Applied Research and Innovation
4. District Resiliency Updates - Carolina Maran, Ph.D., P.E., Division Director of Flood Control and Water Supply Planning, Chief of District Resiliency, SFWMD
5. Legislative Session Update on Resiliency - Phil Flood, Legislative Liaison and External Affairs Specialist, SFWMD
6. Break
7. Broward Countywide Resiliency Plan 2025 and Integration into Regional Strategies - Gregory J. Mount, Ph.D., Assistant Chief Resilience Officer, Broward County
8. C&SF Flood Resiliency Study Updates - Tim Gysan, P.E., Chief, Ecosystem Projects Section and Resilience Coordinator, USACE; Eva Velez, P.E., Ecosystem Branch Chief, USACE; Jennifer Smith, Project Manager, USACE; and Carolina Maran, Ph.D., P.E., Division Director of Flood Control and Water Supply Planning, Chief of District Resiliency, SFWMD

9. Around the Table Updates from Local, State and Tribal Partners
10. Public Comment
11. Closing Remarks - Carolina Maran, Ph.D., P.E., Division Director of Flood Control and Water Supply Planning, Chief of District Resiliency, SFWMD
12. Adjourn

Final Presentations:

Agenda Item Background:

- 03 JacobyC Florida Flood Hub
- 04 MaranC District Resiliency Updates
- 05 FloodP Legislative Session Update on Resiliency
- 07a MountG Broward Countywide Resiliency Plan 2025 and Integration into Regional Strategies
- 8a MaranC Central & Southern Florida Project
- 8b GysanT Central & Southern Florida Project USACE
- 11 MaranC Closing Remarks



Update on the Florida Flood Hub: focus on change factors & data from synthetic aperture radar

MARCH 26, 2026

RESILIENCY COORDINATION FORUM



Florida Flood Hub: workgroups



**Sea Level Change
Workgroup**



**Rainfall
Workgroup**



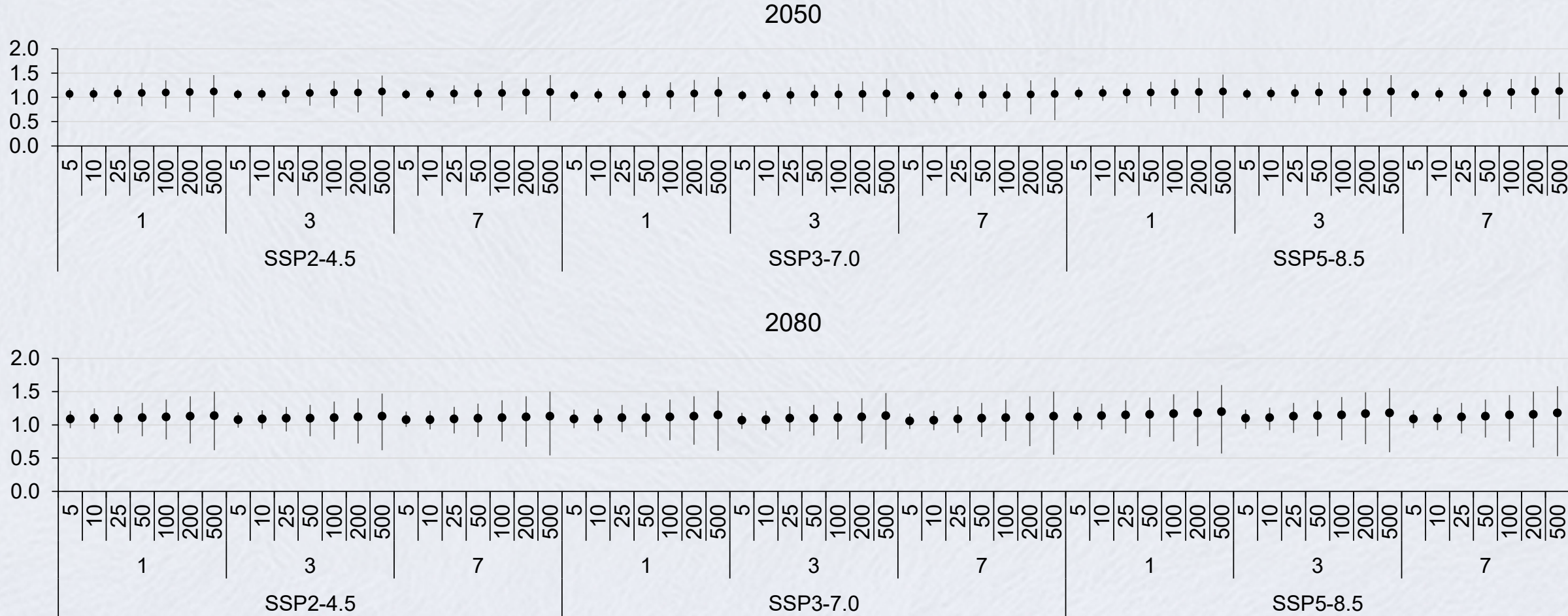
**Comprehensive Modeling
Workgroup**

Questions & answers

- CMIP5, CMIP6, or CMIP5 + CMIP6? **CMIP6**
- Individual datasets or combine (LOCA2 & NASA)? **LOCA2 only**
- Individual SSPs or combine? **Individual**
- Spatially differentiated values or statewide values? **Statewide values**
- Cull using Clausius-Clapeyron scaling? **No – medians are consistent**
- Estimates for 2050 & 2080 **Completed**

Range of medians for 2050 = 1.03–1.13 & Range of medians for 2080 = 1.06–1.20

Median change factor with 17th & 83rd percentiles



Sea Level Rise Projections for Florida

SEA LEVEL RISE WORKGROUP INITIAL PRODUCTS

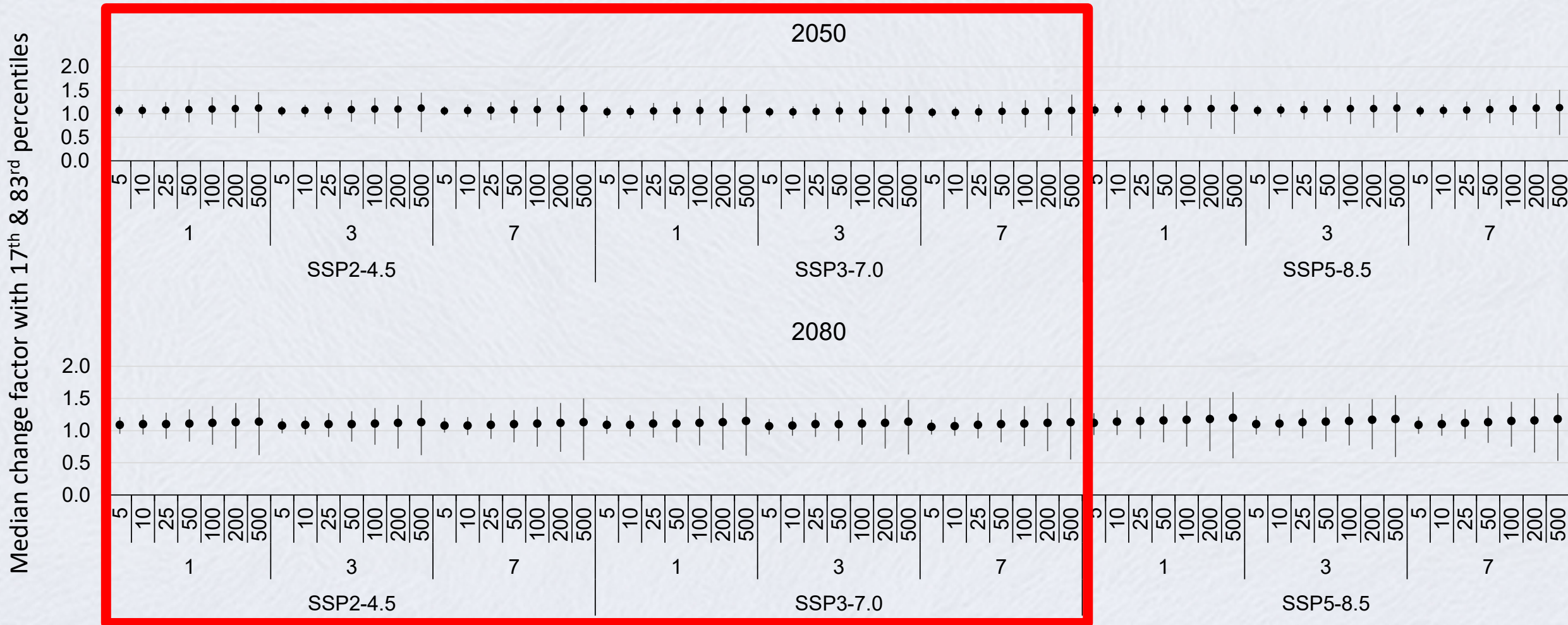
Sea Level Rise Scenario	Time Horizon		
	2000 – 2040	2000 – 2050	2000 – 2070
	----- mm / inches -----		
Low	198 / 7.8	250 / 9.8	334 / 13.1
Intermediate Low	227 / 8.9	292 / 11.5	423 / 16.7
Intermediate	244 / 9.6	330 / 13.0	548 / 21.6
Intermediate High	271 / 10.7	394 / 15.5	759 / 29.9
High	296 / 11.7	454 / 17.9	966 / 38.0

Exceedance Probabilities

SEA LEVEL RISE WORKGROUP INITIAL PRODUCTS

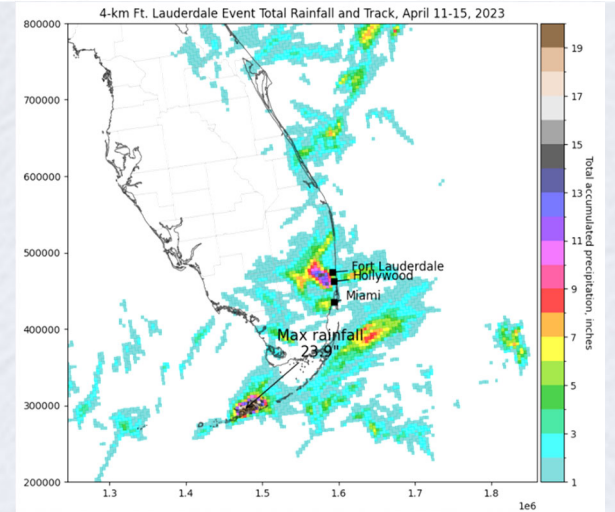
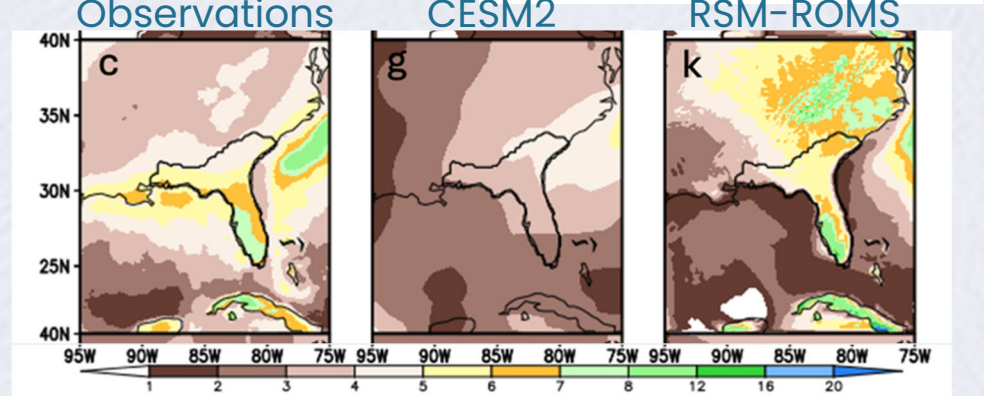
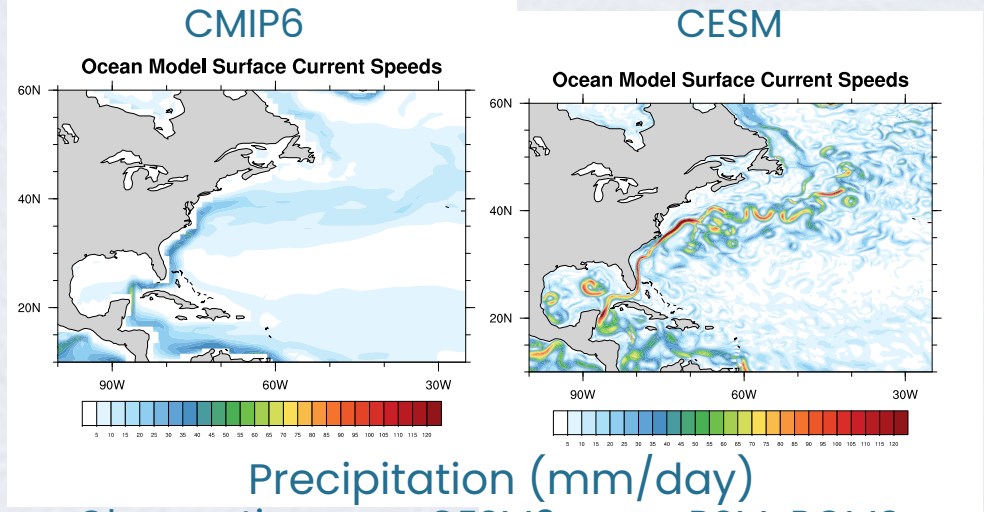
SSP	1-2.6	1-2.6 to 2-4.5	2-4.5 to 3-7.0	3-7.0	5-8.5
Increase in Global Mean Surface Air Temperature					
Sea Level Rise Scenario	1.5°C	2.0°C	3.0°C	4.0°C	5.0°C
Low	92%	98%	99%	>99%	>99%
Intermediate Low	37%	50%	82%	97%	>99%
Intermediate	<1%	2%	5%	10%	23%
Intermediate High	<1%	<1%	<1%	1%	2%
High	<1%	<1%	<1%	<1%	<1%

Range of medians for 2050 = 1.03–1.12 & Range of medians for 2080 = 1.06–1.15



Regional modeling

- 1) Community Earth System Model (CESM)
 - ~25 km atmospheric grid
 - ~10 km oceanic grid
- 2) Regional Spectrum Model–
Regional Ocean System Model (RSM-ROMS)
 - ~10 km grids
- 3) Weather Research & Forecasting Model (WRF)
 - 2–4 km grid



Regional modeling

- 1) Establish reference period = 10 years centered on 2015
- 2) Complete historical ensemble = 5×10 -year simulations
- 3) Complete 2°C warming ensemble = 5×10 -year simulations
- 4) Complete 3°C warming ensemble = 5×10 -year simulations
- 5) Process data \Rightarrow changes in extremes

ICEYE subscription

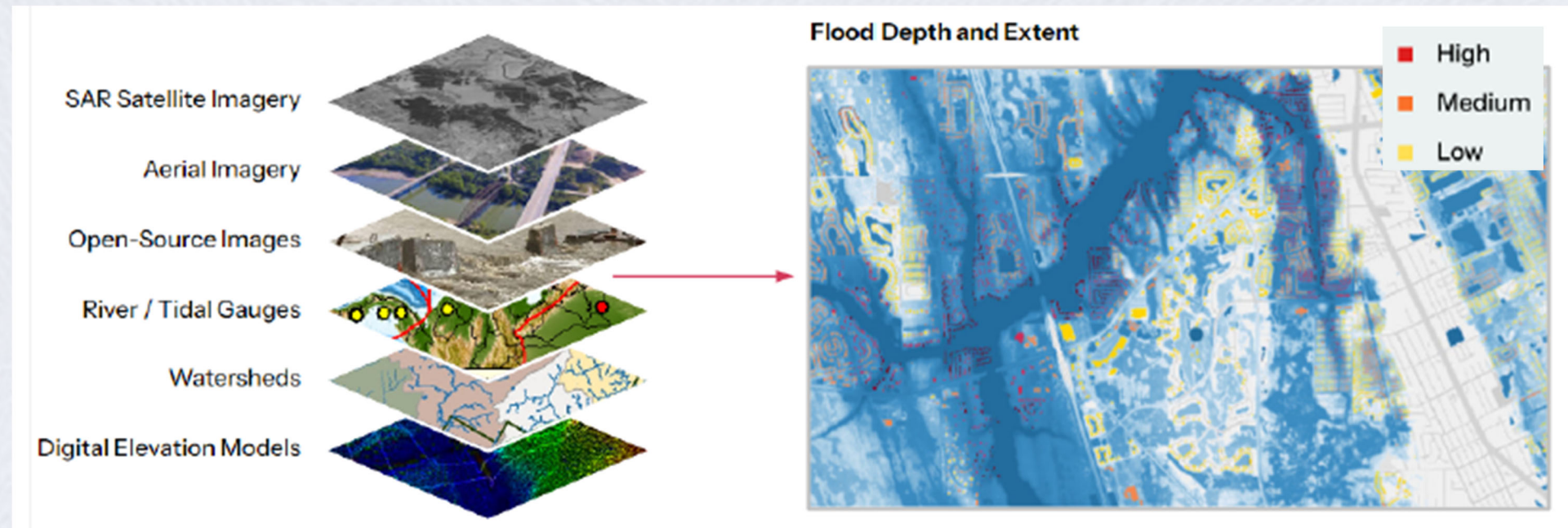
State of Florida

ICEYE Flood Solutions
Proposal



ICEYE process

- “Ingest” multiple sources of data
- Generate flood extent & depth
- 4 m × 4 m resolution
(13' × 13')



ICEYE access

State-level agencies in Florida:

- Division of Emergency Management
- Department of Environmental Protection
- Department of Transportation
- Fish and Wildlife Conservation Commission
- Department of Health
- Department of Agriculture and Consumer Services

The following Water Management Districts:

- South Florida Water Management District;
- Southwest Florida Water Management District;
- St. Johns River Water Management District;
- Northwest Florida Water Management District; and
- Suwannee River Water Management District.

*Other state-level government agencies requested by the Customer, subject to ICEYE's prior written approval.

ICEYE access

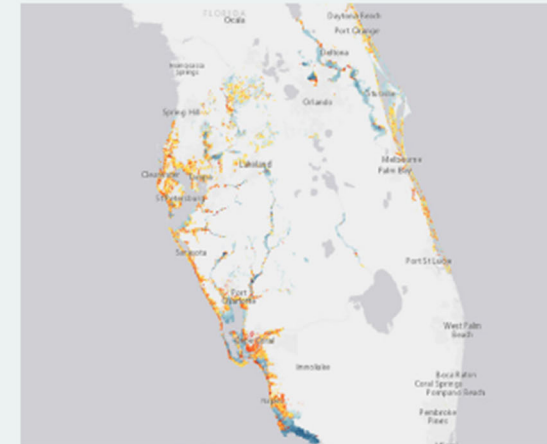
- Reports on all storms for 2026
- Access to archived data (> Ian in 2022)
- “Derivatives” can be provided to others
- Seek partners for future years



ICEYE

Flooding from Hurricane Milton

Background information based on R11



Central and South Florida ANALYSIS RELEASE 10 | OCTOBER 21

Hurricane Milton made landfall near Siesta Key, Florida, on the evening of October 9th, 2024. It struck as a powerful Category 3 hurricane with maximum sustained winds of 120 mph. The storm caused significant storm surges and widespread power outages across Florida's Gulf Coast.

The storm then moved inland, reducing in strength but leaving extensive flooding and damage in its wake. We observed storm surge from Bradenton southward to Naples, and 10-15 inches of rainfall from St. Petersburg through Orlando. Riverine flooding continued through the second half of October as the floodwaters slowly moved downriver.

ICEYE has been monitoring the storm and its impacts since its formation, acquiring over 100 SAR satellite images of the impacted areas through thick storm clouds and even at night. We delivered the first flood extent and depth analysis on October 10th, focusing on the west coast of Florida. Since then, we produced 10 more analysis releases. Based on our final analysis data from Release 11, we identified more than 180,000 buildings that were impacted by the flooding in Florida.

TOTAL FLOOD EXTENT
2,346 sq mi (6,076km²)

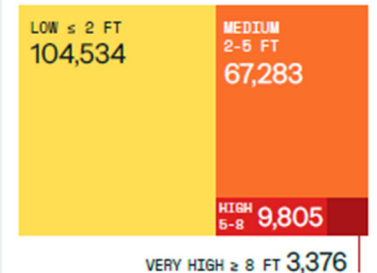
MOST AFFECTED COUNTIES
Hernando County
Volusia County
Orange County
Broward County
Highlands County

MOST AFFECTED CITIES
Tampa
Grant-Valkaria
Naples Manor
Bradenton
Cape Coral

AVERAGE INUNDATION AT BUILDING LEVEL
2.18 ft (0.67 m)

IMPACTED BUILDING COUNT
184,998

Total number of buildings affected by flood water depth category



Disclaimer
The current data is based on ICEYE's analysis with information collected until October 21, 2024. The analysis is focused on data specific to the regions most affected by the floods. Some areas which have been impacted by the flooding may not be represented in the data.

Thank you

Chuck Jacoby
Associate Director
Florida Flood Hub for Applied Research & Innovation
cajacoby@usf.edu





District Resiliency Updates

Resiliency Coordination Forum – March 26, 2026

Carolina Maran, Ph.D., P.E.

Division Director, Flood Control and Water Supply Planning

Chief of District Resiliency

South Florida Water Management District

Team Updates



Anushi Obeysekera

Bureau Chief, Flood Control and Water Supply Planning

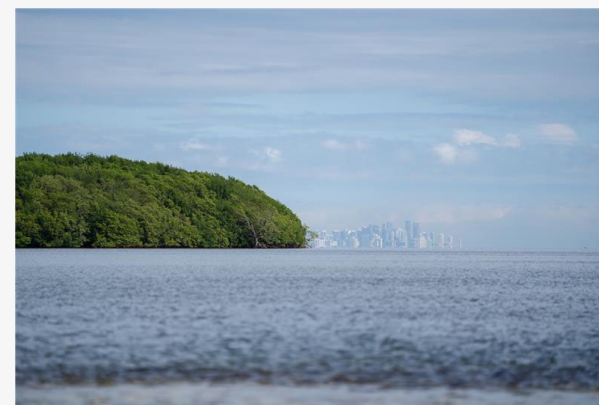
Anushi joins the team with more than a decade of experience at the District, including four years as Section Leader for the Groundwater Modeling Unit. She has led major regional modeling efforts such as the East Coast Surficial Model and the East Central Florida Transient Expanded Model for the 2025 CFWI Regional Water Supply Plan, and she has also served as the Hydraulic Analysis Team Co-Chair. Her background spans technical oversight, interagency coordination, expert witness testimony, and translating complex modeling results for executive and public audiences. She holds a Master of Science in Civil Engineering, where her research focused on groundwater variability under changing conditions, including sea-level rise.

With her strong technical foundation, collaborative leadership style, and deep understanding of South Florida's hydrology and water management challenges, Anushi is well-positioned to lead this expanded Bureau and support our work in water supply, flood control, and resiliency planning.



Ongoing Organizational Updates

The Division of Flood Protection and Water Supply Planning coordinates planning and implementation efforts, working closely with internal teams and with local, state, and federal partners. Together, we support water supply and flood control planning, advance resiliency initiatives, and move projects toward implementation.



ENVISIONING A RESILIENT FUTURE

Our resilience vision is one where our water resources and ecosystems are restored and safeguarded, communities are protected from flooding, and water supplies remain sustainable and secure. We use the best available science, tools and data to support risk informed decisions and to adapt the District's infrastructure to continue to successfully perform under sea level rise and other changing climate and hydrologic conditions.



Water and Climate Resilience Metrics Update

2026 South Florida Environmental Report (SFER)

Published on March 1st and Open House on March 4-5, 2026.

Chapter 2A: South Florida Hydrology and Water Management

- Water Year 2025 (May 1, 2024 – April 30, 2025)
 - Hydrology
 - Water Management
 - Event Summaries

Chapter 2B: Water and Climate Resilience Metrics

- Long-term Trends
 - Rainfall
 - Drought (meteorological)
 - High tide Events at Coastal Structures
 - Saltwater Intrusion

2027 South Florida Environmental Report (SFER)

Under development for publishing March 1st, 2027:

Chapter 2A:

- Water Year 2026
 - Hydrology
 - Water Management
 - Event Summaries

Chapter 2B:

- Long-term Trends
 - Sub-daily Rainfall
 - Flooding Events
 - Water Quality
 - Algal Blooms (TBC)



Access the Entire Report:

[2026 South Florida Environmental Report](#)

Poster Exhibitions:

[View the Posters](#)



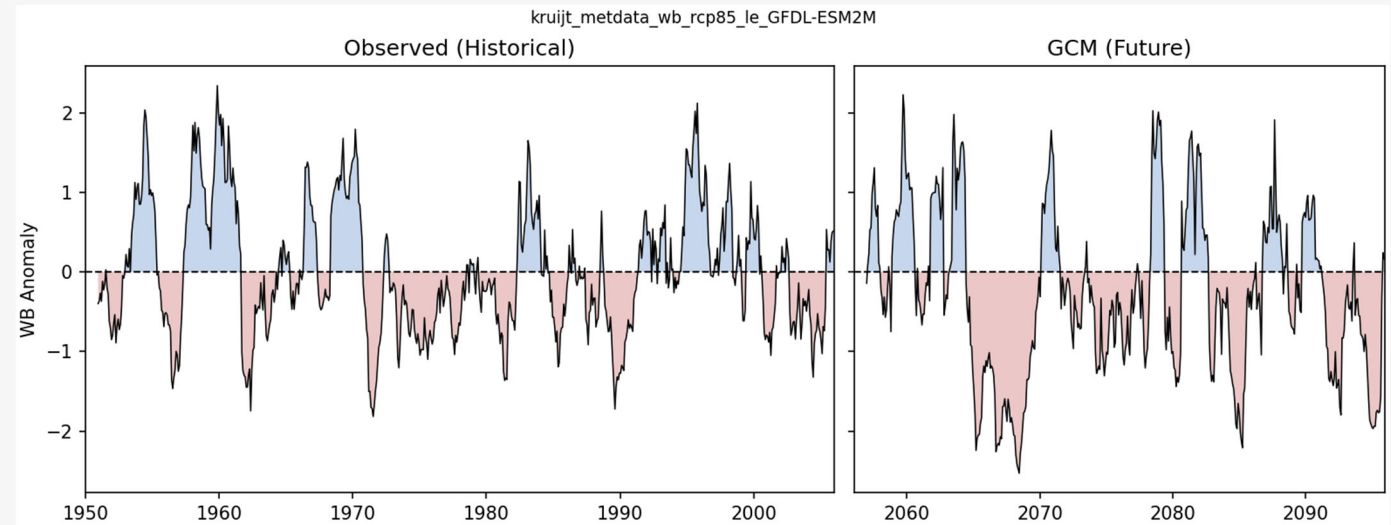
Future Water and Climate Scenarios Workgroup

Ongoing Efforts

- **Drought (deficit anomalies, supporting WSVA¹)**
 - GCM scenarios selection / ET bias correction / Rainfall spatial transformation
 - Technical Memorandum
- **Rainfall (surplus anomalies, supporting CFWI²)**
 - GCM scenarios selection
- **Statewide Coupled Ocean-Atmospheric Regional Model**
 - Baseline Reference Period – review and input complete
 - Simulations for Planning Horizons – review and input ongoing

¹WSVA: Water Supply Vulnerability Assessment

²CSWI: Corkscrew Watershed Initiative



FPLOS Program Updates

Phase I: Flood Vulnerability Assessment

Western Basins

(Hendry & Collier Counties)

- Current Conditions LOS assessment – ongoing

Taylor Creek / Nubbin Slough

(Okeechobee & Martin Counties)

- Calibration and Validation - ongoing

Phase II: Adaptation and Mitigation Planning

C-7 Basin

(Miami-Dade County)

- Study - near completion

Combined Phase I and II Study

St. Lucie-Martin Counties

- Loxahatchee Current Conditions LOS - ongoing
- St. Lucie Calibration and Validation - complete

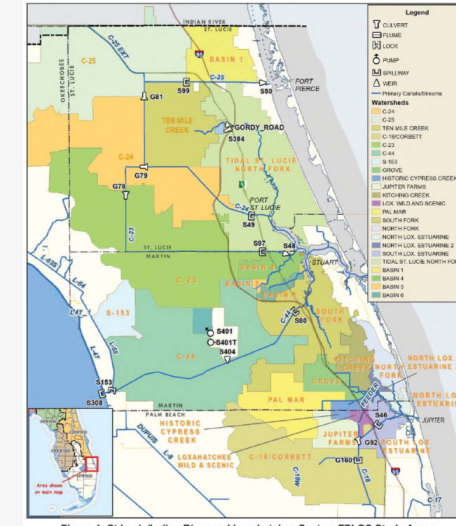
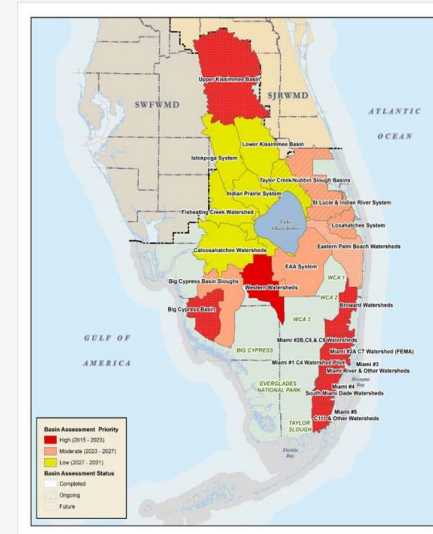
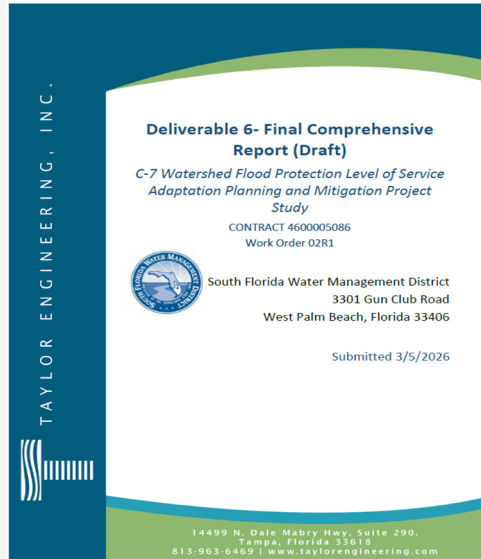


Figure 1: St Lucie/Indian River and Loxahatchee System FPLOS Study Areas

Planned FPLOS Study

- Caloosahatchee Phase I – Charlotte, Lee, Glades and Hendry Counties

FPLOS C-7 Basin Phase II Study



- Strategically Selected Plan (SSP): long-term flood risk management
- Comprehensive flood-damage-reduction benefits relative to project costs
- SFWMD is advancing design and construction of key SSP regional component:
 - S-27 Coastal Structure Resiliency
- Locally led watershed projects compliment regional components and enhance overall system performance

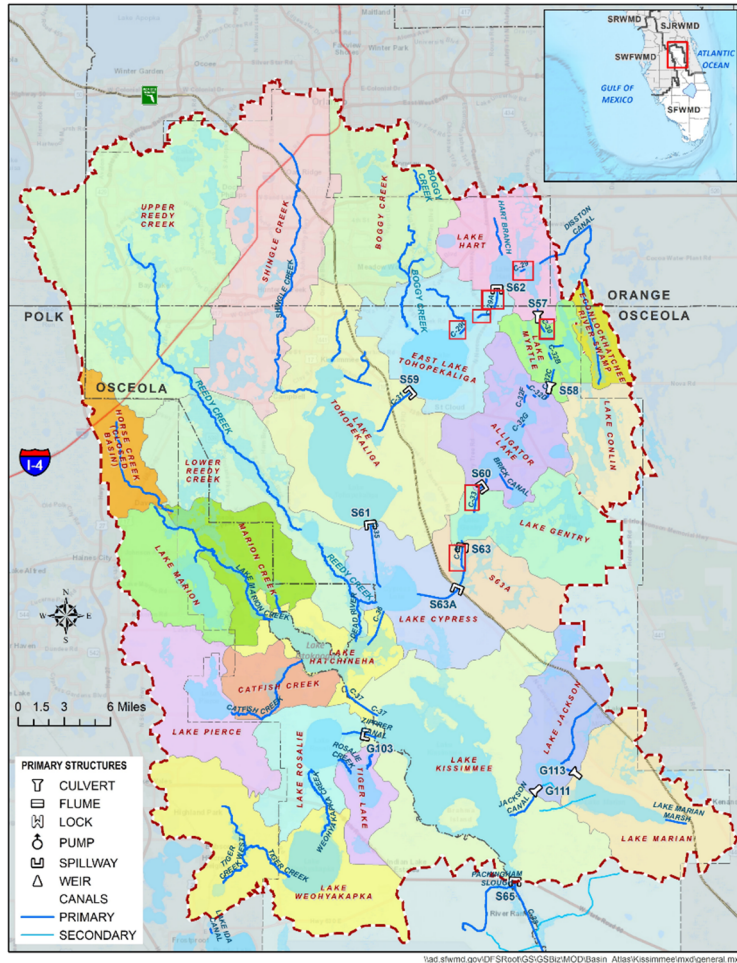
- February 5, 2026 Public Meeting - Findings and Recommendations

[Presentation](#)

[Meeting recording](#)

- Recommendations from FPLOS Adaptation and Mitigation Planning Projects studies will be incorporated into the District's Sea Level Rise and Flood Resiliency Plan

UKB FPLOS - Adaptation Planning Updates



- Targeted FPLOS Study in support of resilience adaptation planning and HMGP post disaster project applications and technical review by FDEM
- Tasks 1A and 1B – supporting Basis of Design
 - H&H modeling completed
 - Economic Assessment completed



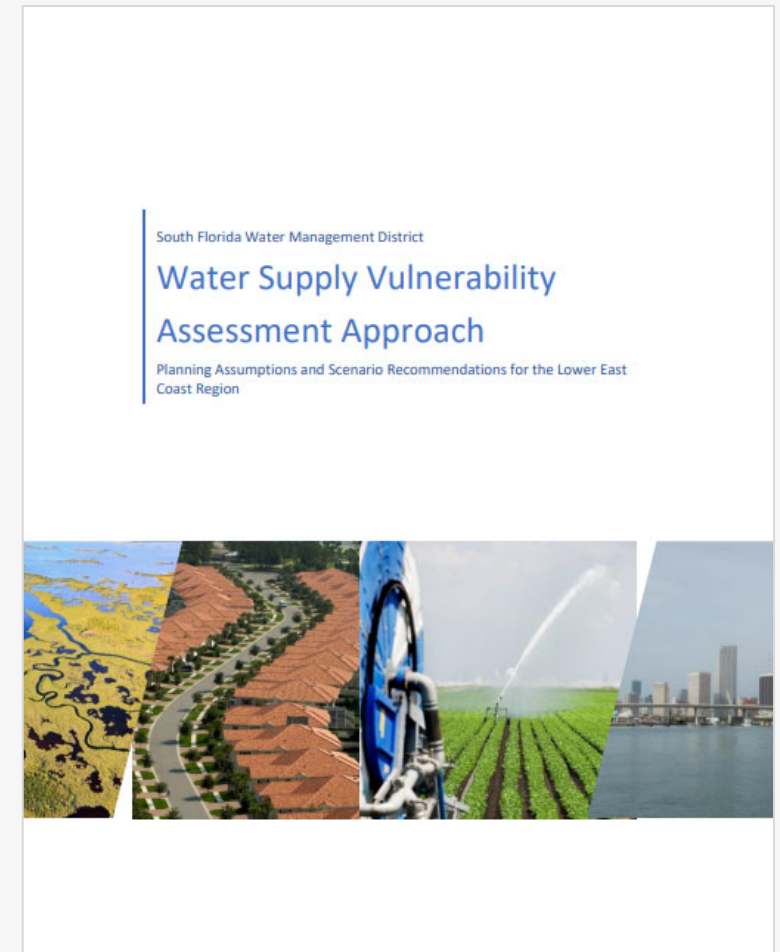
Water Supply Vulnerability Assessment Update

Modeling Effort

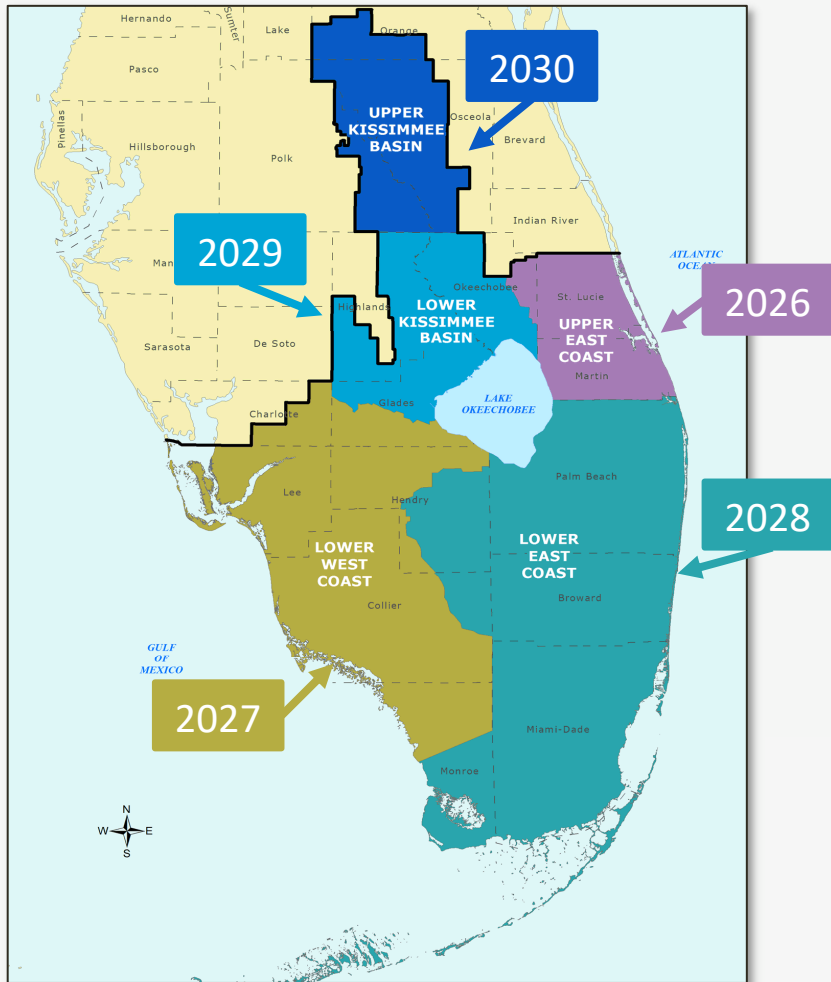
- Utilize the East Coast Surficial Model (ECSM) – Upper/Lower East Coast
- 50-year look ahead (2075) at growth
- Sea Level Rise Intermediate Curves and Future Climate Scenarios
- Characterize future potential impacts on water supply sources
- Future iterations will inform strategies and projects to build resiliency

Current Status

- Model data inputs under development:
 - 💧 Drought rainfall, ET & temperature data – in testing
 - 💧 Future land use and population distribution - COMPLETE
 - 💧 Public utility and self supply well withdrawals – COMPLETE
 - 💧 Irrigation well withdrawals with climate change – in progress
 - 💧 RSM surface water modeling for boundary conditions – begin in April
- ECSM runs anticipated in summer 2026



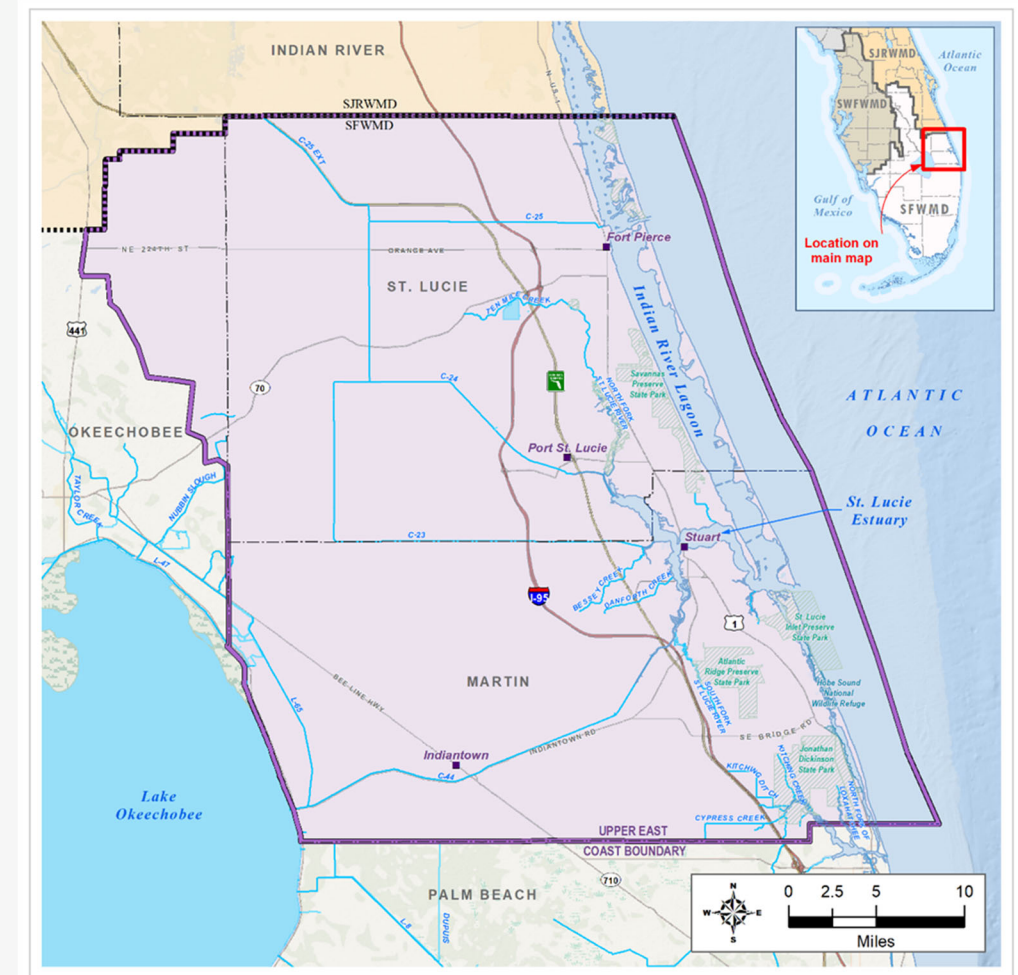
Water Supply Plans: Next Round of 5-year Updates



- 20-year planning period
- Demand estimates and projections
- Resource analyses
- Issue identification
- Evaluation of water source options
- Water resource development
- Responsibility of water management district
- Water supply development
- Responsibility of water users
- Environmental protective and restoration strategies
- Review/update prevention and recovery strategies for minimum flows and minimum water levels (MFLs)

Upper East Coast Water Supply Plan

- Five-year update with demand projections to 2050
- All of Martin and St. Lucie counties and northeastern portion of Okeechobee County
- 17 public supply utilities
- Major agricultural industry
- Important natural and water resources
 - C-23, C-24, and C-25 canals
 - St. Lucie River and Estuary
 - Indian River Lagoon
 - North Fork of the Loxahatchee River
- Scheduled approval for November 2026

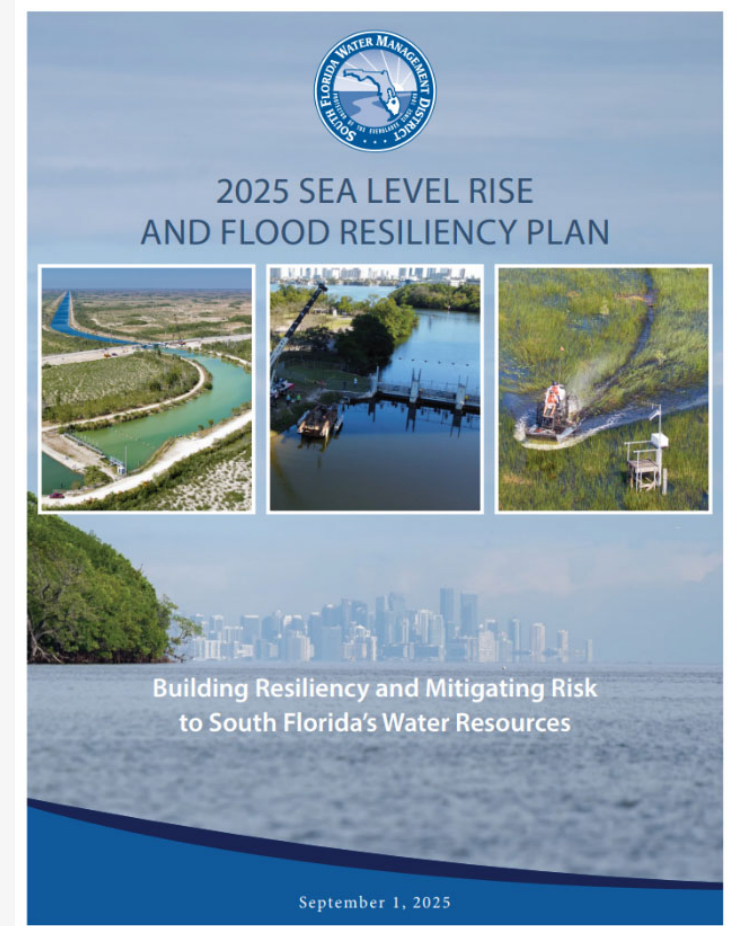
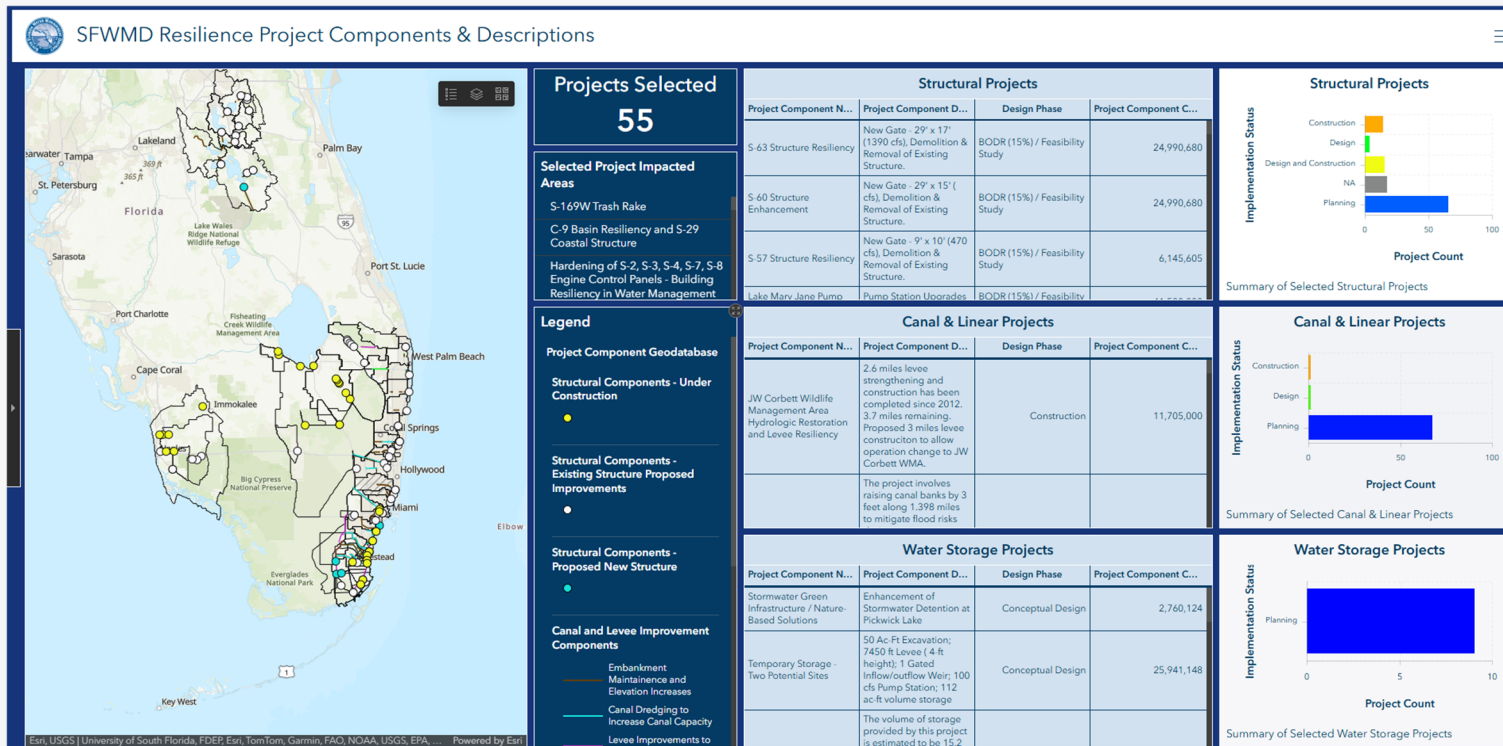


\\ad.sfwmd.gov\dfsroot\GIS\GISBz\WS\UEC\2021UECWSP\mxd\20210215_UECPlanningArea.mxd



2026 Resiliency Plan Projects Update

A new Resiliency Plan Projects Dashboard to support projects update is in development and currently under internal review, with production rollout expected in June.



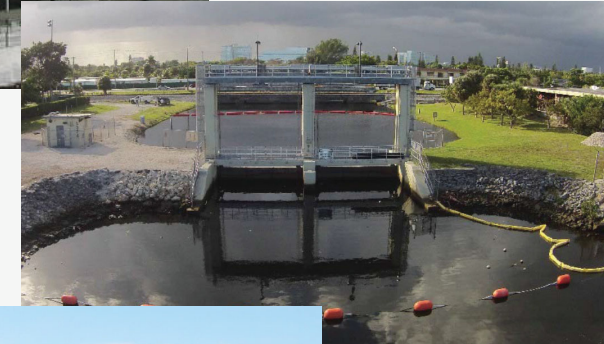
2025 SLR and Flood Resiliency Plan





C&SF Flood Resiliency Studies – Broward Basins (Section 203) Under USACE HQ Review for Cost Certification

- Tentatively Selected Plan & ~35% Design Plans for 8 structures, 3 canals and monitoring stations
- Draft Integrated Feasibility Report and Environmental Assessment Published and Comments Received
- Independent Peer Reviews nearing completion

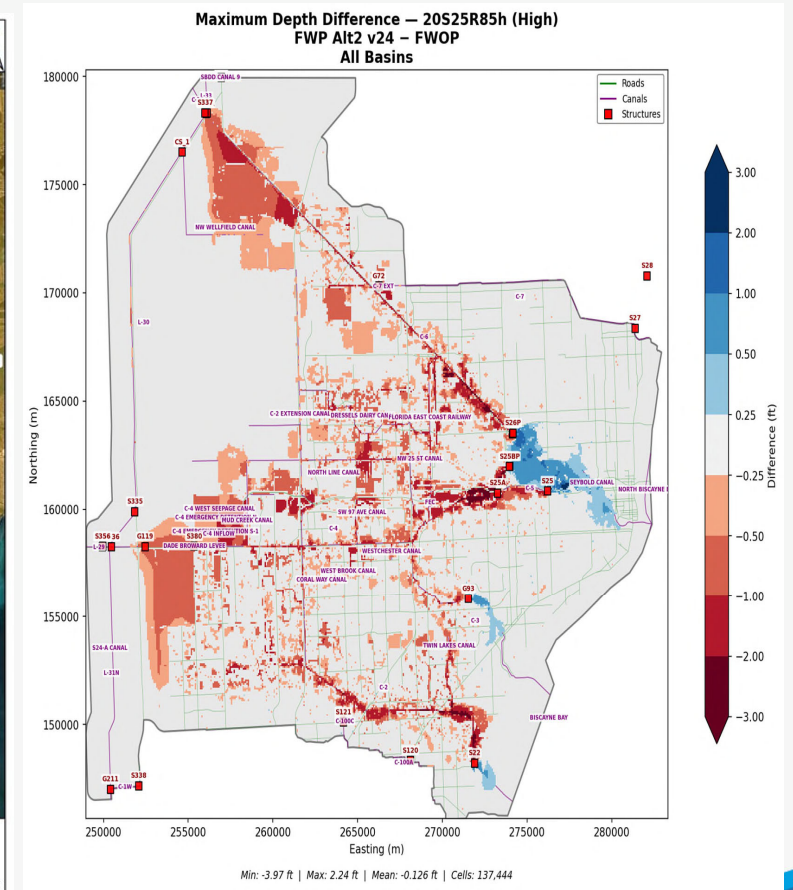
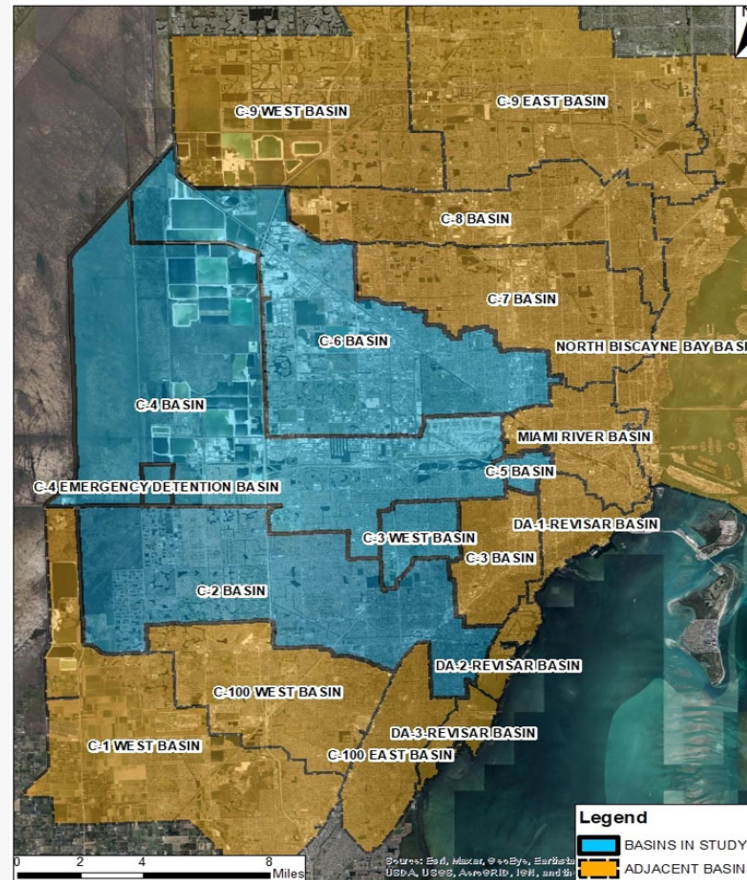




C&SF Flood Resiliency Studies – Miami Basins (Section 216)

Initial Array of Alternatives

- Modeling efforts continue on the Initial Array of Alternatives
- Economic Analysis through HEC FDA
- Meeting with City of Coral Gables for input on Initial Array
- Exploratory Sensitivity Testing
- Upcoming Public Meeting later in the Spring



Grant Implementation Projects

- **FDEM/FEMA HMGP and FDEP Grants Implementation:**
 - C-7 Basin (S-27); C-8 Basin (S-28) and C-9 Basin (S-29)
 - Final Review Steps and FEMA Design Grant Closeout
 - Draft MOAs and Land Negotiations ongoing
 - Planned Construction Start later in 2026
- **FDEP Resilient Florida Grants Implementation:**
 - 3 new grant award received for FY25-26
 - Periodic Site visits and quarterly reports
 - Additional Planning Grant received in FY25-26
- **FDEP Innovative Tech Grant Implementation:**
 - WIPE OUT project, in collaboration with Miami-Dade County – Construction Initiated in February 2026
 - Monitoring to initiate Spring 2026



Recent Grant Application Submittals



FDEM – Watershed Management Plan

1. Lee County FPLOS Phase I - under review



EPA – South Florida Program

1. C-7 Canal Enhancement BODR - under review



FDEP / SFWMD Cooperative Funding Program

In anticipation of state funding being allocated, the District opened the FY27 cycle on December 1, 2025, and the online submission portal closed on February 26, 2026. The FY27 project list will be presented at the upcoming May 14, 2026, governing board meeting.



Clewiston Injection Well

Alternative Water Supply

Years	Projects	Capacity (mgd)	Construction Costs	Funding
FY97 – FY26	539	523	\$1.81 B	\$275.4 M

Water Conservation

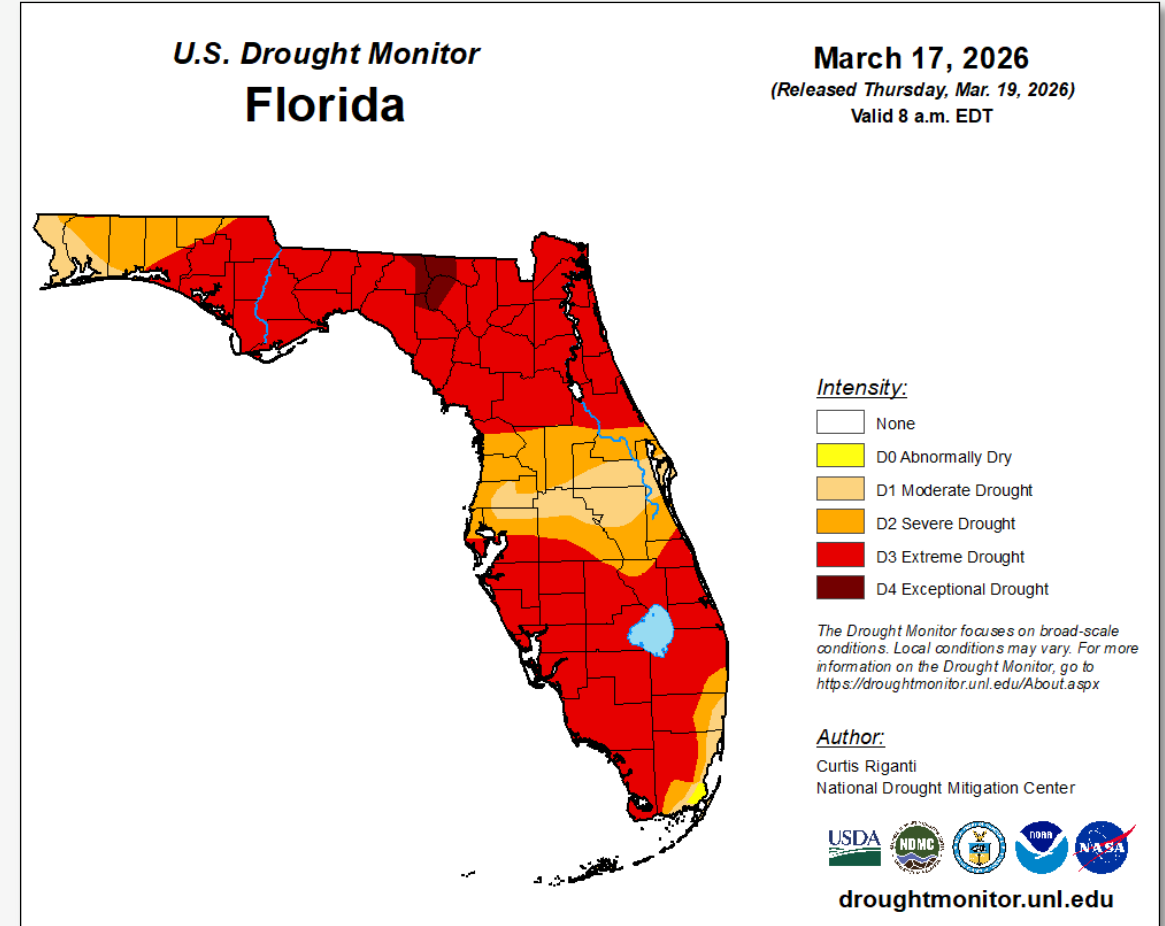
Years	Projects	Estimated Water Savings (mgd)	Total Project Costs	Funding
FY03 – FY26	278	14.3	\$32.2 M	\$9.7 M

mgd = million gallons per day



Water Shortage Update

- The District issued a **Water Shortage Warning** for **Collier, Glades, Highlands, Lee, Miami-Dade** and **Monroe** counties on February 5, 2026
- The U.S. Drought Monitor indicates that the Lower East Coast is in **moderate to extreme drought** and the Lower West Coast and Indian Prairie Basin are in an **extreme drought**

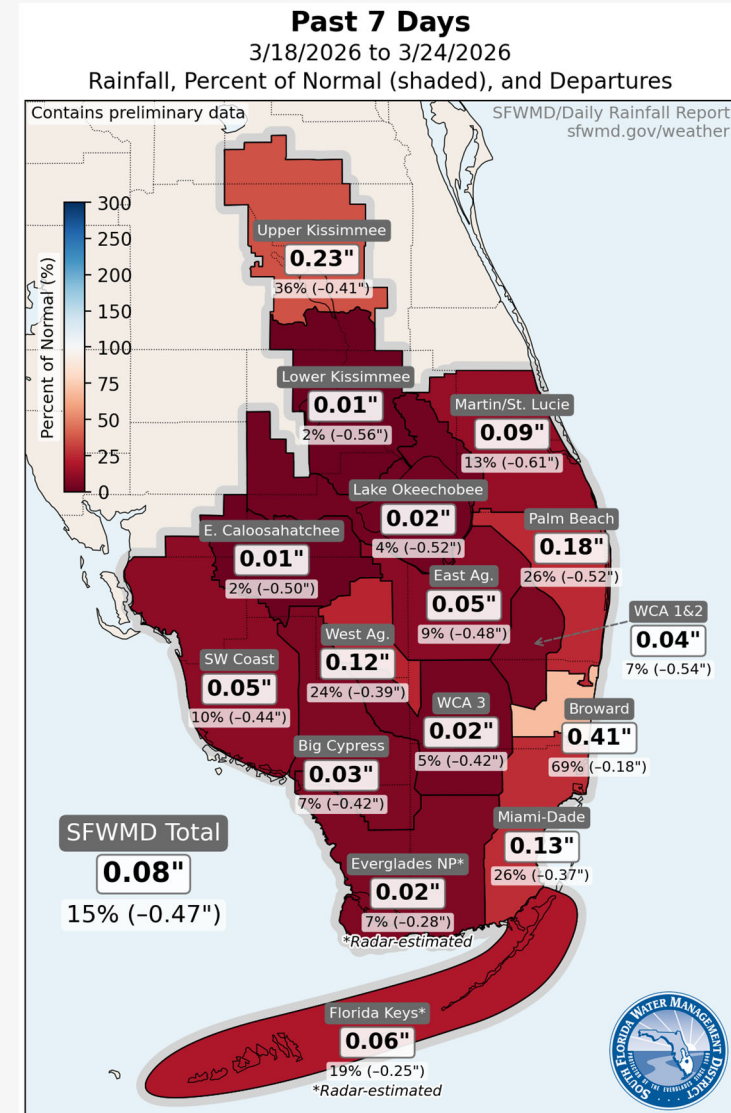
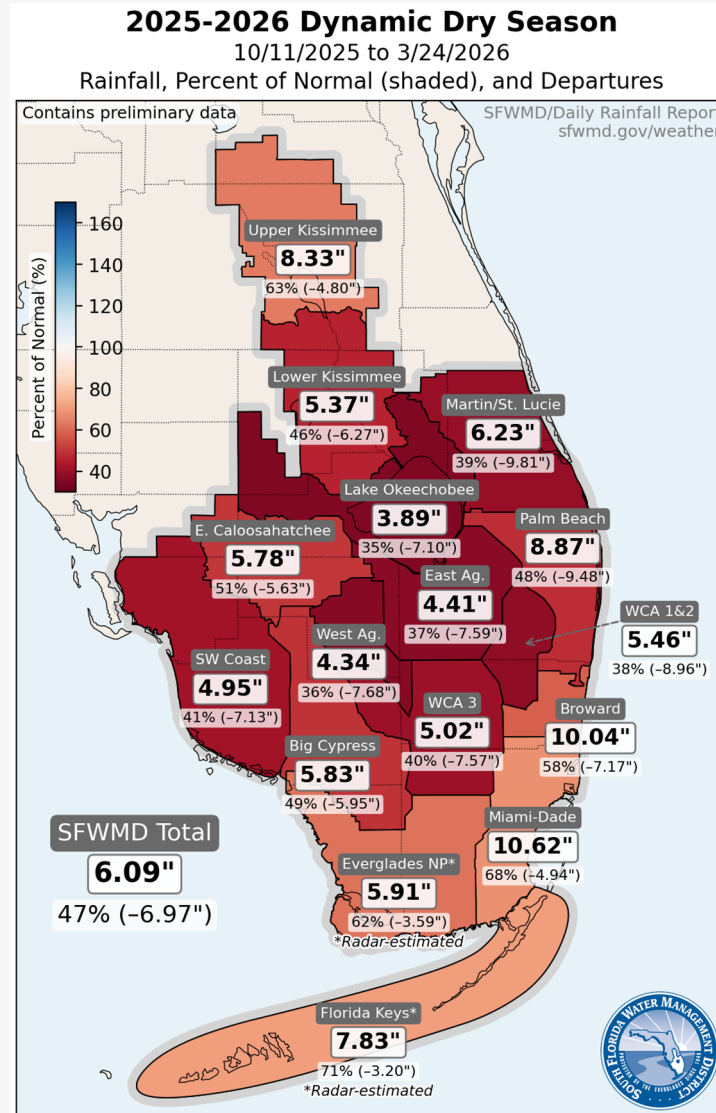


Water Shortage Update

- Enhanced Monitoring by SFWMD and Partners
 - Groundwater levels in the **Biscayne Aquifer** in Miami-Dade and the **Lower Tamiami Aquifer** in Collier and Lee Counties
 - Water levels in canals and lakes within the Indian Prairie Basin
 - Chloride and Water Levels being shared weekly by Water Utilities/Users
- Temporary Deviation request for Lake Istokpoga under review by USACE
- The District is encouraging residents, visitors and businesses to conserve water and limit irrigation. All landscape irrigation should comply with the allowed days and times established in local government's year-round landscape irrigation ordinance.

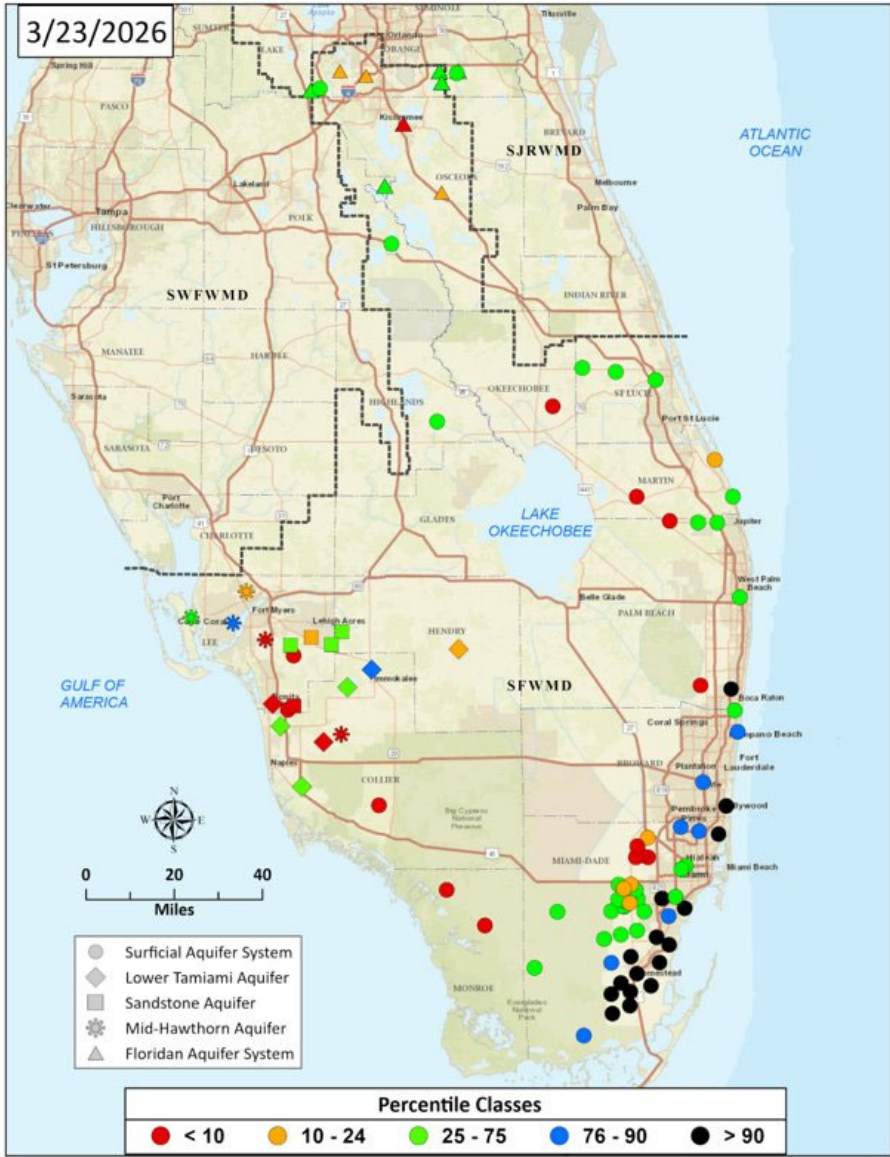


Rainfall



Groundwater Conditions

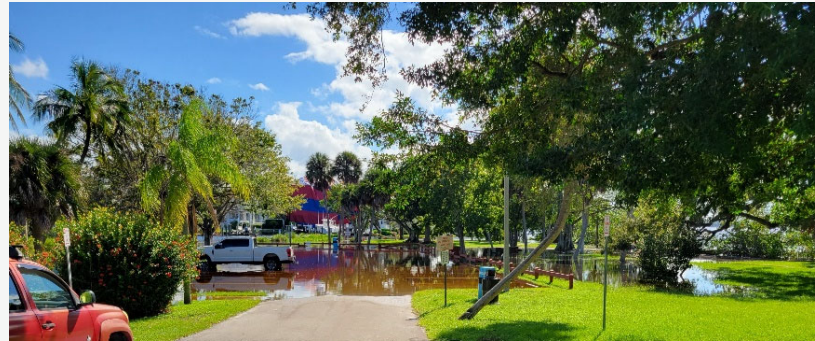
Region	Aquifer	Count <i>P</i> < 10
LEC (Miami-Dade)	Biscayne	4
LWC (Lee & Collier)	Lower Tamiami	2
	Sandstone	3
	Mid-Hawthorn	3
UEC (Martin)	Surficial	1



2026 Wet Season Prep

Planning and coordination are underway!

- **Wet Season:**
May 2026 - October 2026
- **Hurricane Season:**
June 1 - November 30, 2026
- **King Tide Season:**
August 10 – December 27, 2026



2026 King Tide Season

During these periods, high tides may exceed one or more National Weather Service (NWS) flood thresholds in parts of the region.

East Coast

Maximum Peak: October 27

- August 11 - 14
- September 8 - 15
- September 24 - October 15
- October 22 - November 12
- November 22 - 29
- December 22 - 27

Florida Keys

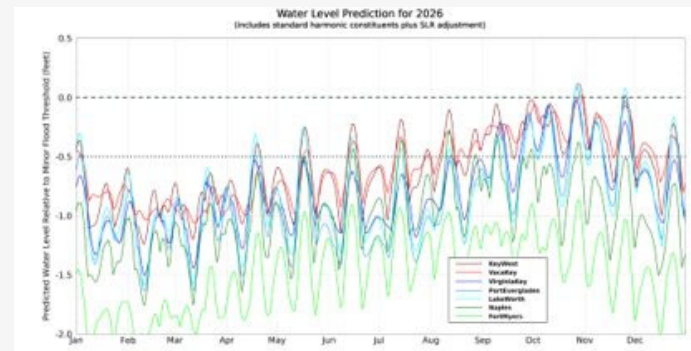
Maximum Peaks: October 28 & 30

- August 7 - 21
- August 24 - November 17
- November 19 - December 1
- December 4 - 13
- December 21 - 27

West Coast

Maximum Peak: August 12

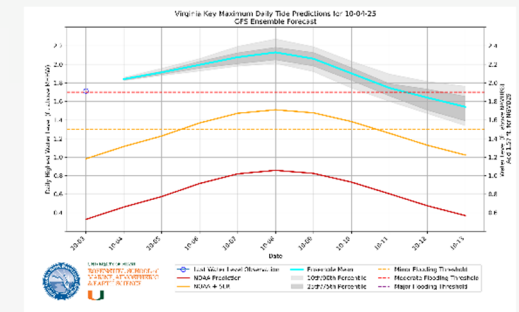
- August 10-14
- August 27-28
- September 8-11
- September 29 - October 1
- October 27-29



2026 King Tides Forecast

The 2026 king tide season has begun, and the South Florida Water Management District (District) will publish a weekly Tidal Outlook to keep you informed this season. These outlooks begin today, August 10, and will continue to be shared every Monday throughout the season. The updates are intended to inform interested stakeholders and the public.

King tides are driven by variations in the strength and direction of the moon's gravitational pull, especially during new and full moon phases in the fall. The King tide outlooks provide information on conditions – such as wind strength and direction, and ocean currents – that can cause tides to rise or fall beyond predicted levels. The District continues its efforts to monitor, respond to, and document these events.



Flood Observations & High-Water Mark Survey Training

Now in its third year, SFWMD flood data training is open to local government staff who collect, review, and analyze flood information. Six sessions available at facilities across the region. Register today!



- **Tuesday, April 28, 2026, 9:30 AM to 12:00 PM**
SFWMD Headquarters, 3301 Gun Club Road, **West Palm Beach, FL 33406**
- **Thursday, April 3, 2026, 9:30 AM to 12:00 PM**
SFWMD's Homestead Field Station (FS), 2195 NE 8th Street, **Homestead, FL 33033**
- **Thursday, May 7, 2026, 9:30 AM to 12:00 PM**
SFWMD's Fort Lauderdale FS, 2535 Davie Road, **Davie, FL 33317**
- **Tuesday, May 12, 2026, 9:30 AM to 12:00 PM**
SFWMD's St. Cloud FS, 3800 Old Canoe Creek Road, **St. Cloud, FL 34769**
- **Thursday, May 14, 2026, 9:30 AM to 12:00 PM**
SFWMD's Okeechobee FS, 1000 NE 40th Avenue, **Okeechobee, FL 34972**
- **Tuesday, May 19, 2026, 9:30 AM to 12:00 PM**
SFWMD's Fort Myers Service Center, 2301 McGregor Boulevard, **Fort Myers, FL 33901**

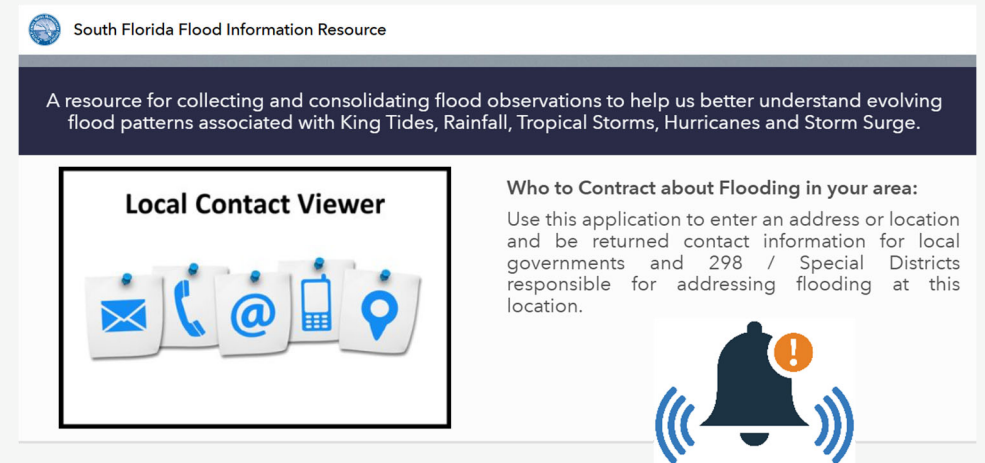
<https://forms.office.com/g/Ttrj3FU7rW>



Local Contact Notification System Implementation

SFWMD is implementing the Local Contact Notification System to keep local flood management partners across South Florida informed in real time.

- Automatically notifies local County, City, and Drainage District contacts by email when a flood report is submitted within their jurisdiction
- Direct link to the South Florida Flood Information Resource application for full report access
- A South Florida Flood Information Resource account is required for full access to flood reports and related information; see [Account Creation Instructions](#)
- Flood reports are being shared for awareness and informational purposes only

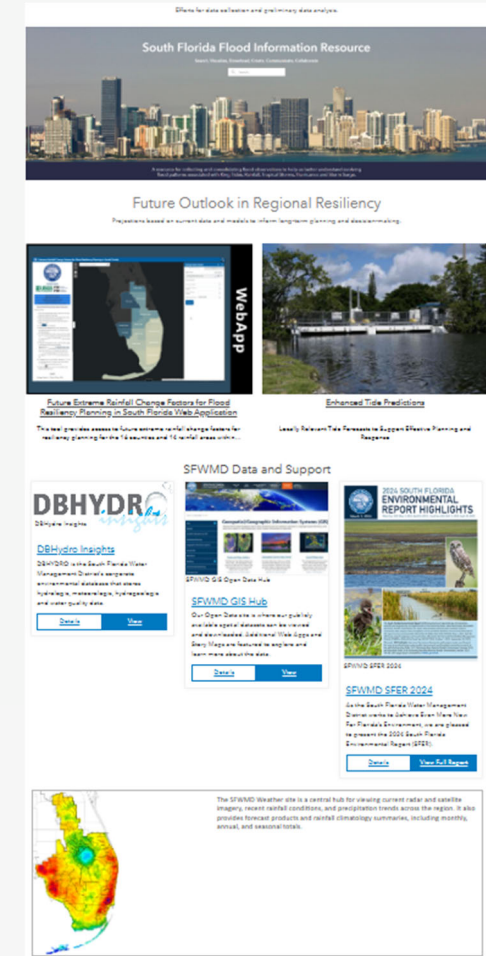
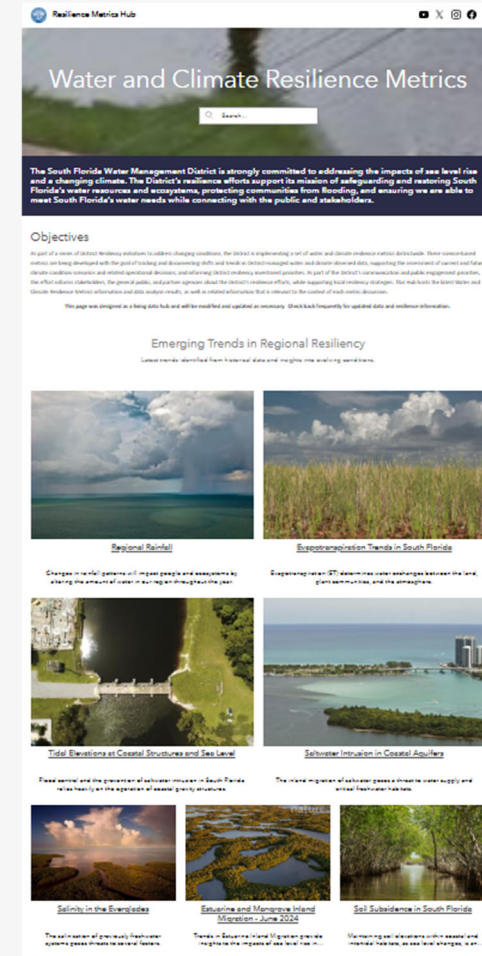


Testing on Tuesday, April 14, 2026, at 10:00 AM EST

Water and Climate Resilience Metrics

Optional Add-On Training

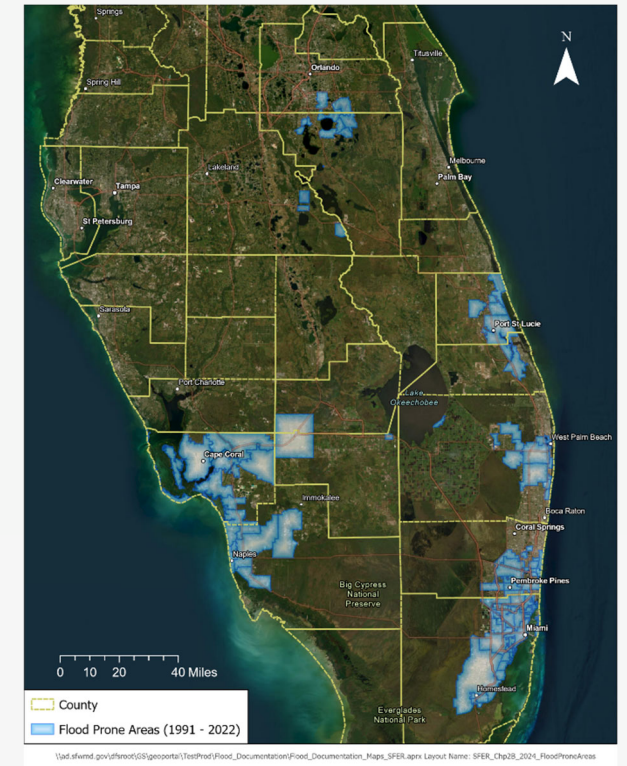
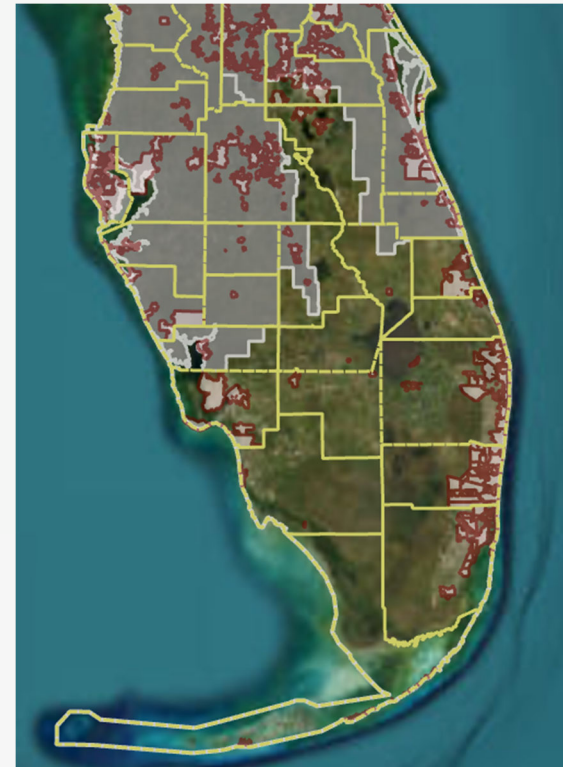
- In response to partner feedback, we're planning hands-on training on how to access and interpret the Water and Climate Resilience Metrics data and information we use to support regional resiliency planning
- Sessions would be offered immediately following select Flood Observations and High-Water Mark Survey Training sessions.
- Please let us know which session location you'd be interested in attending and whether you'd like to stay for this additional training via the survey.
- A follow-up email to confirm interest will be sent to already registered participants.



Value-Added Flood Products from SAR Data

SFWMD will continue developing SAR derivative products using ICEYE data packages, including:

- Flood extents aligned with pre-determined unit grid and pre-identified flood-prone areas.
- ICEYE-derived extent polygons validated against LiDAR and existing infrastructure and operational rules.



Thank you!!





2026 Legislative Session Update on Resiliency

Phil Flood

Legislative Liaison / External Affairs Specialist

March 26, 2026

2026 Legislative Session

Legislature Completed Regular Session on March 13
Absent the Budget

1896 Legislative Bills Filed

- 237 Bills Passed
- Bills are Being Presented to Governor for his Consideration

86 Bills Filed Reference Resiliency, Flooding or Sea Level Rise

2 Bills Involving Resiliency Passed

Legislative Bills of Interest

SB 302 Coastal Resiliency

Enhances aquatic preserves by limiting certain dredging activities, authorizing nature-based construction options, and establishing guidelines for statewide coastal resiliency. Includes:

- Allows nature-based structures, including living shorelines, within aquatic preserves to strengthen coastal resiliency and preserve marine environments.

Legislative Bills of Interest

SB 302 Coastal Resiliency – cont.

- Requires the Department of Environmental Protection to develop statewide guidelines and rules for nature-based coastal resiliency projects, providing clear permitting criteria, incentives for green infrastructure, and public education efforts.

Status: Signed by Governor. Goes into effect July 1, 2026.

Legislative Bills of Interest

HB 1417 Department of Environmental Protection

Repeals the Environmental Regulation Commission, revises solar facility permit requirements, expands public-private partnerships for coastal resiliency, updates sewage system regulations, and adjusts air pollution fee deadlines.

- Includes coastal resiliency projects as a qualifying project under public-private partnership law, allowing for revenue-sharing and expedited permitting.

Legislative Bills of Interest

HB 1417 Department of Environmental Protection – cont.

- Creates a new provision to encourage private-sector investment in coastal resiliency projects by authorizing revenue-sharing agreements, streamlined permitting, and public outreach.

Status: Signed by Governor. Goes into effect July 1, 2026.

Legislative Bills of Interest

HB 5001/SB 2500 General Appropriations Act

House: \$113,575, 226,021

Senate: \$115,025,780,033

Status: Awaiting Special Session and Budget Conference.

Proposed Funding

	<u>House</u>	<u>Senate</u>
Everglades Restoration (includes NEEP & DWM)	\$348,700,000	\$743,576,213
Resilient Florida Program	\$100,000,000	\$100,000,000
Resilient Florida - Planning	\$10,000,000	\$20,000,000
Beach Restoration	\$50,000,000	\$64,141,067

2026 Legislative Update

Questions?



Resilience Planning Efforts in Broward County

Presented SFWMD Quarterly
Resiliency Forum

March 26, 2026



Presentation Overview

- Introduction
- Countywide Risk Assessment and Resilience Plan
 - Resilientbroward.com
- Moving Towards Implementation
 - Broward Projects
 - Section 203 Progress

Perspective



Perspective Shifts



*L (Andrews looking South) & R (Andrews looking South and down)
UAS Imagery from April 13, 2023*

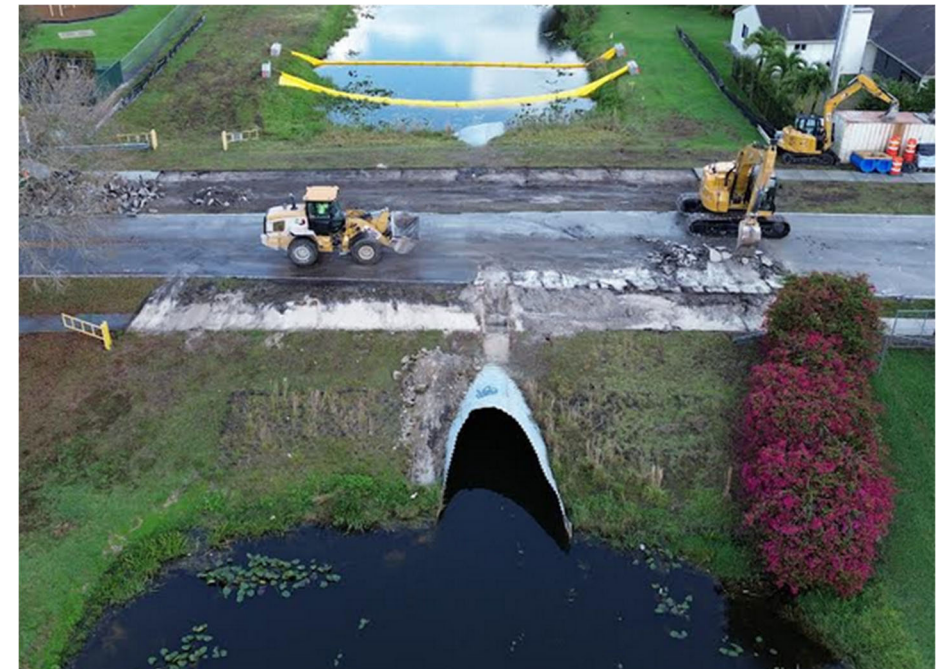
Resilience: Planning to Implementation

- Sea Level Rise Projection - 2012, 2015, 2019
- Priority Planning Area Map - 2012, 2015, 2020
- Future Conditions Map Series – 2017
 - Future Conditions GW Elevation 2060 (2017)
 - Future Conditions GW Elevation 2070 (2023)
 - Future Conditions 100-Year Flood Elevations (2021)
- Resilience Standards
 - Drainage infrastructure - 2017
 - Tidal flood barriers - 2020



Resilience: Construction

- Resilience Plan Project Tracker
- Resilient Broward Grant Program
 - Leverages 1.5m of Grant Funding to 11m of Construction
- Section 203
 - Joint effort with SFWMD





Broward Community-wide Risk Assessment and Resilience Plan



COMMUNITY
OUTREACH



RISK
ASSESSMENT



ECONOMIC
MODELING



ADAPTION
PLAN



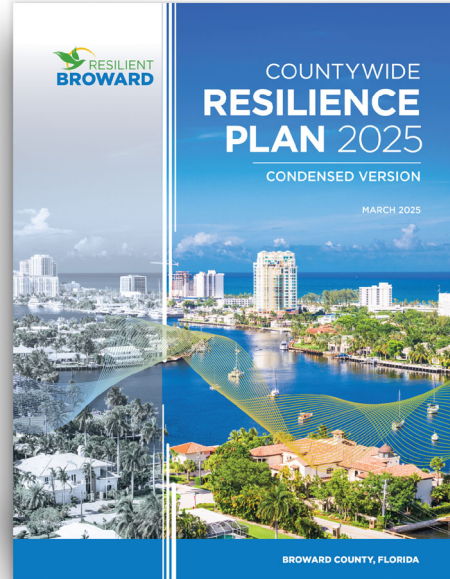
ONLINE
PLATFORM

The Broward County Resilience Plan



Executive Summary

A four-pager with a high-level explanation of the project, impacts of sea level rise, and solutions to be implemented as part of the plan.

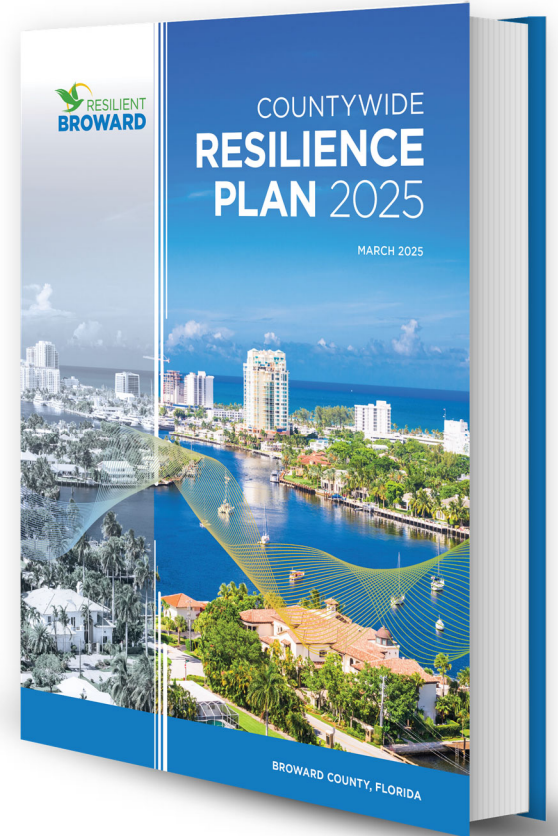


The Condensed Plan

A short version giving a holistic summary of individual aspects of the project as well as a simplified breakdown of the Plan's economic impacts.

The Full Plan

A detailed breakdown of all aspects of the project, the solutions, and the cost and benefit breakdown.



Resilientbroward.com

Presenter: Dr. Gregory Mount

9

Spanish and Haitian Creole too!

Questions ?

Dr. Gregory J. Mount
Assistant Chief Resilience Officer
Resilient Environment Department

gmount@broward.org
954-519-0356



RESILIENT
ENVIRONMENT



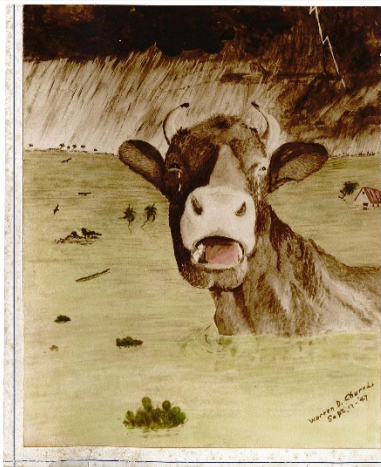
Past: Central & Southern Florida Project



1926 AND 1928
DEVASTATING HURRICANES
 ... LOSS OF 2,500 LIVES

HOOVER DIKE AUTHORIZED 1930

... COMPLETED 1937



TENTATIVE REPORT OF FLOOD DAMAGE
 FLORIDA EVERGLADES DRAINAGE DISTRICT
 1947





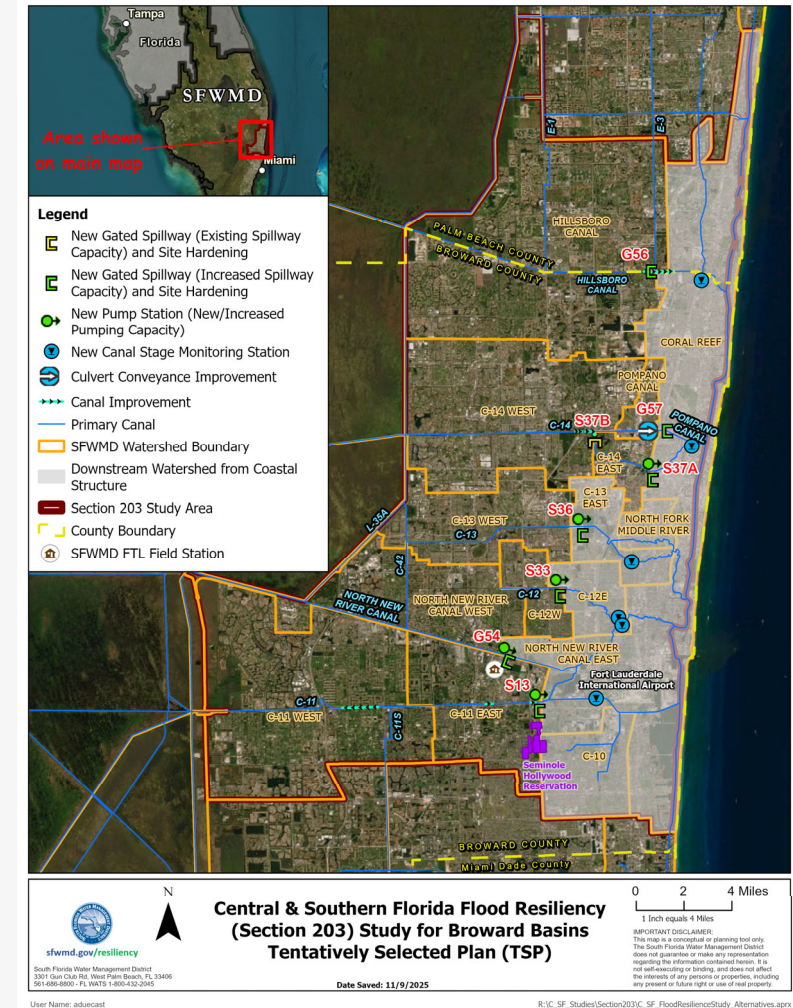
Present: Broward C&SF Flood Resiliency Study

Robust, resilient infrastructure solution that continues to provide protection under changing conditions

Balanced outcomes — flood resiliency while maintaining water supply reliability and ecosystem restoration

Informed by lessons learned from ecosystem restoration, and a thorough, transparent NEPA process

Significant step forward to ensure Broward’s communities and local businesses remain well served





Recommended Plan in Summary

- ALT RO meets the project objectives and is cost effective
- Ensures Flood Resilience:
 - Projects are proposed in every basin
 - All primary structures in the study area are improved, including five new or expanded pump stations and canal enhancements
 - Redundancy in pump bays and gates
- Adverse impacts on nearby areas are minimized and/or mitigated
- Ensures C&SF system remains robust and adaptive
- Addresses changing conditions: urban growth, SLR, extreme rainfall
- Supports long-term infrastructure performance



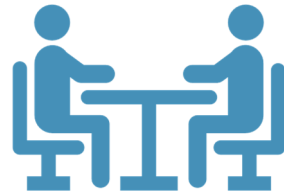


Recommended Plan Benefits



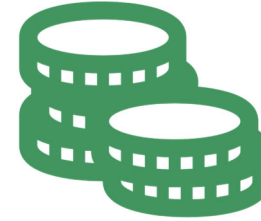
Positive Return on Investment

\$2B to \$2.7B annually, in avoided property damage



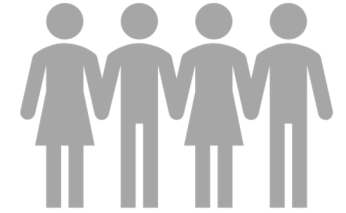
Less Business Interruption

Up to \$2.2M Annual Reduction in Direct Output Loss



More Jobs, Stronger Regional Economy

Up to \$254M in Total Output from Construction and Operations



People Benefited

1.35M Residents;
Up to \$4.4M total annualized savings from displacement



Protection of Critical Infrastructure

Up to 20% Reduction in Flooded Structures



Environmental Quality Increase

Septic and Sewer Overflow Reduction



Protection Against Saltwater Intrusion

Improved Headwater Stage Management



Lower Flood Insurance Rates

10% to 50% Reduction in Flood Values in FEMA Flood Zones AO, AH

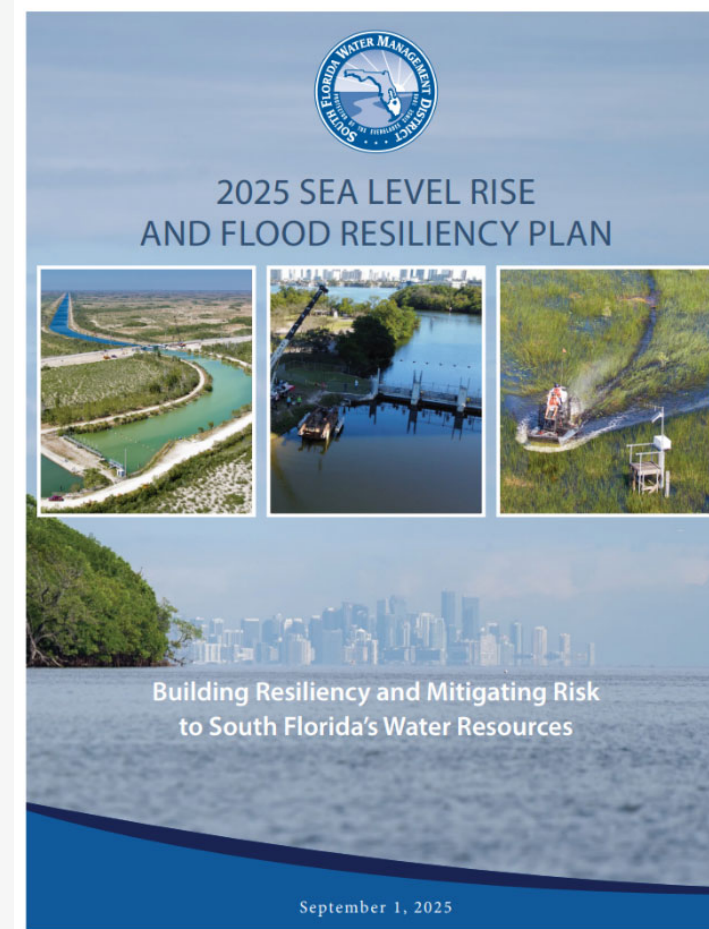
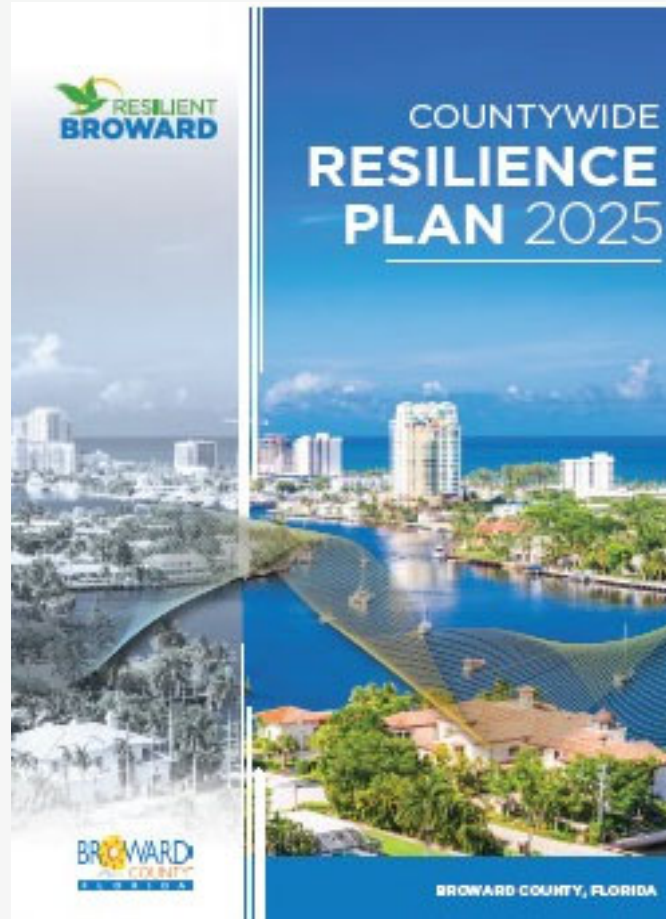
Schedule and Next Steps



Targeting April 2026 - Post FINAL Integrated Feasibility Report and Environmental Assessment Report and Submit to ASA Civil Works



Present and Future: Additional Local and Regional Projects



USACE RESILIENCY PROJECTS UPDATE

SFWMD RESILIENCY COORDINATION FORUM

26 March 2026

E. Timothy Gysan, P.E.,PMP
Chief, Ecosystems Projects Section and
Resilience Coordinator
Jacksonville District
U.S. Army Corps of Engineers



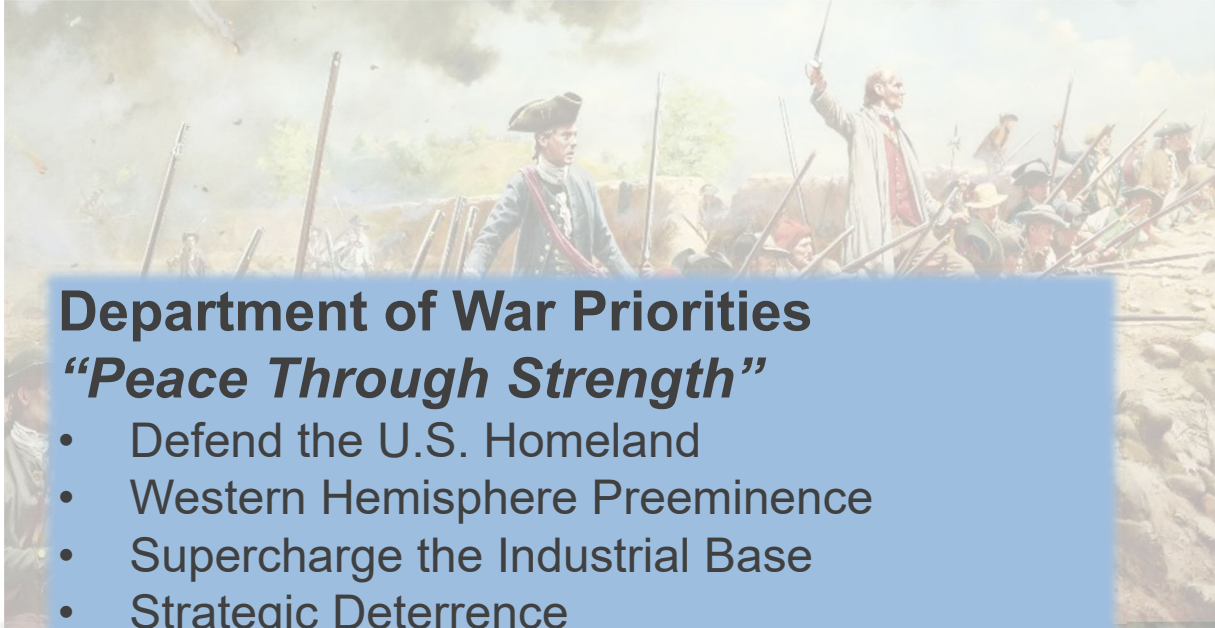
US Army Corps
of Engineers®





DEPARTMENT OF WAR MODERN MISSION

The USACE Role in Strengthening National Security



Department of War Priorities “Peace Through Strength”

- Defend the U.S. Homeland
- Western Hemisphere Preeminence
- Supercharge the Industrial Base
- Strategic Deterrence



US Army Corps of Engineers Roles

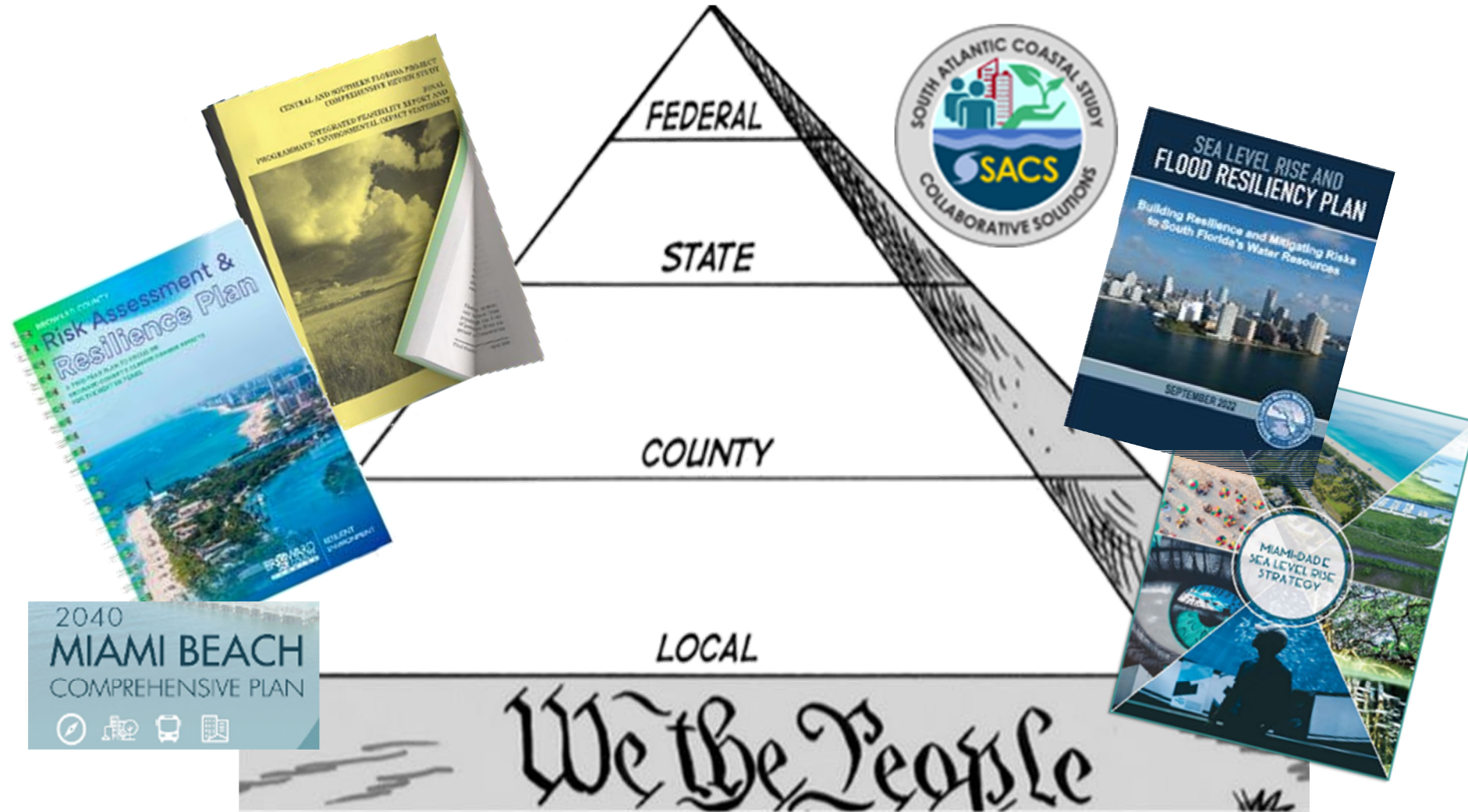
- **Military Programs**
 - Combat Readiness & Garrison Support
 - Rapid Infrastructure Delivery
- **Civil Works**
 - Strategic Navigation
 - Flood and Storm Risk Management
 - Aquatic Ecosystem Restoration
 - Energy Resilience





A UNIFIED FRONT

Necessity of a Collaborative Approach



Water Resource Infrastructure is the Connector

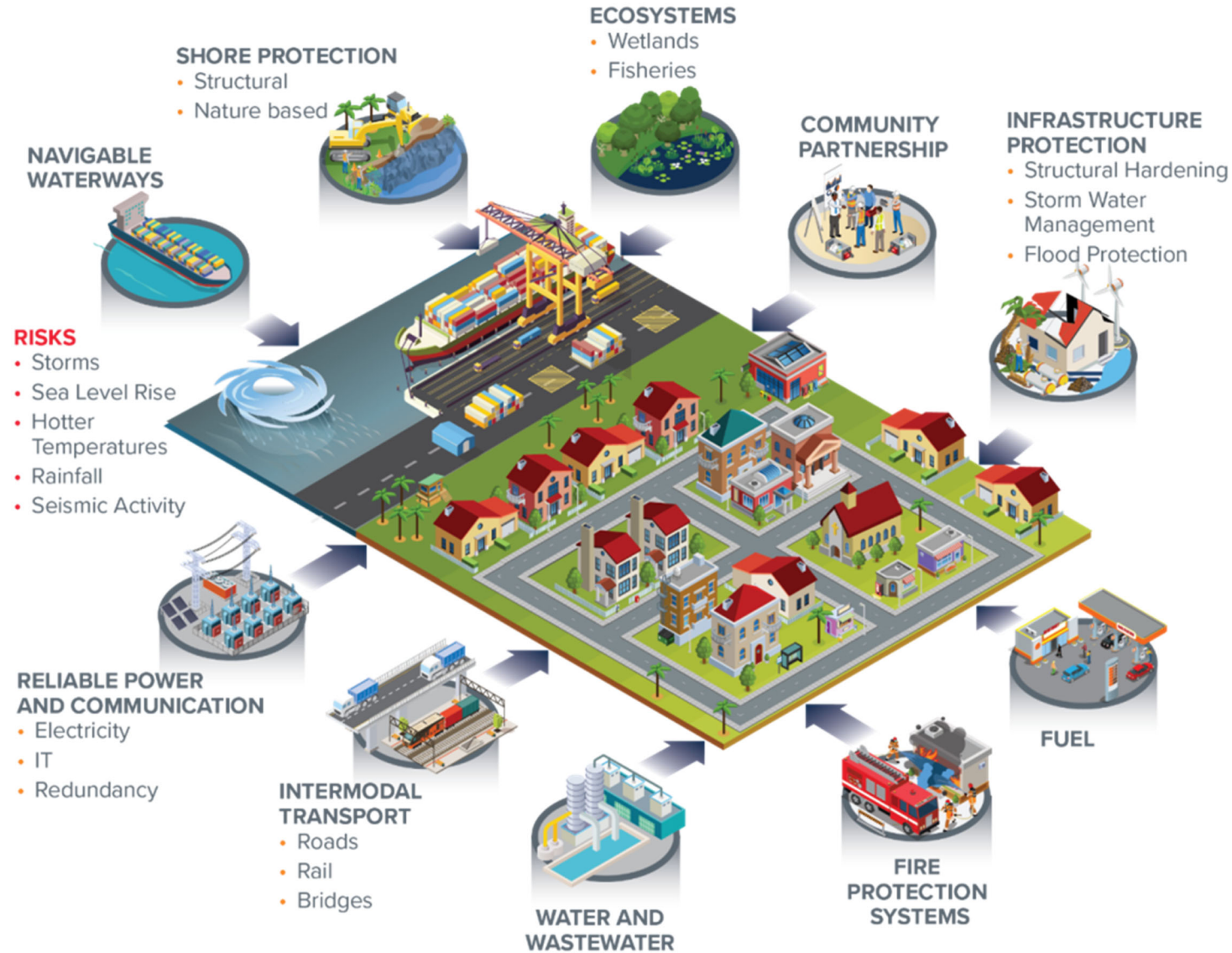
Working Today to Build a Better Tomorrow

Presenter: Tim Gysan



SUSTAINABLE AND SUCCESSFUL OUTCOMES

LONG TERM VISION FOR COMMUNITY RESILIENCY

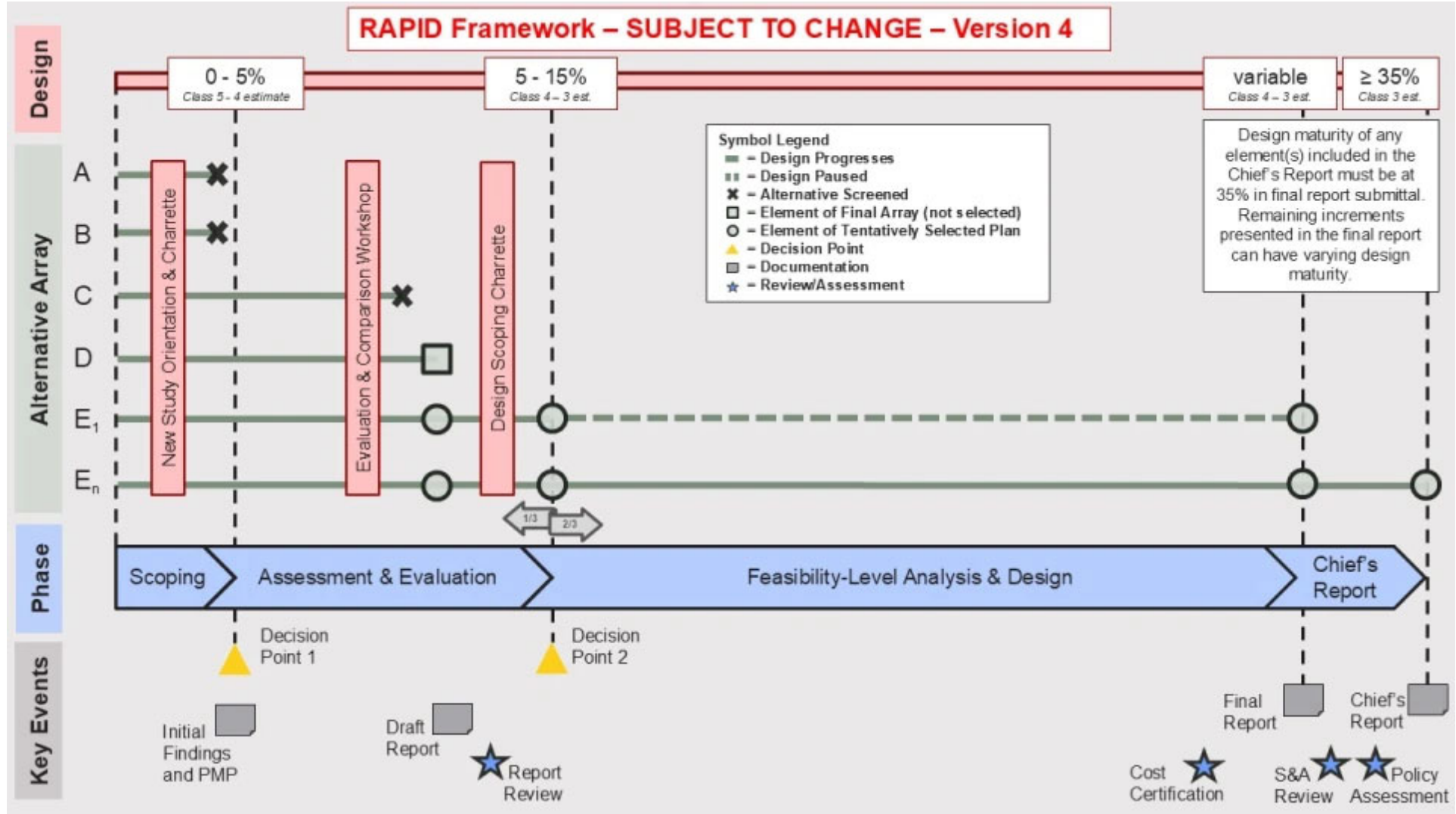




BUILDING INFRASTRUCTURE, NOT PAPERWORK INITIATIVE



RAPID Planning Paradigm





RESILIENCY THROUGH PROJECT INTEGRATION

USACE Projects within SFWMD Boundaries



■ C&SF Flood Resiliency Studies

● Authorized CSRM* Projects

● New CSRM* Studies (+ Back Bay)

◆ Authorized Navigation Projects (DEEP DRAFT)

SOUTH FLORIDA ECOSYSTEM RESTORATION (SFER) PROJECTS, STUDIES, AND REGULATION SCHEDULES

- 4)C-111 South Dade
- 5)Kissimmee River Restoration (KRR)
- 6)Herbert Hoover Dike (HHD)
- 7)Lake Okeechobee System Operating Manual (LOSOM)
- 8) Shingle Creek & Kissimmee River Study
- 10)Picayune Strand Restoration Project (PSRP)
- 11)Indian River Lagoon – South (IRL-S) C-44 Reservoir and STA
- 12)C-111 Spreader Canal Western Project
- 13)Biscayne Bay Coastal Wetlands (BBCW) – Phase 1
- 14)Caloosahatchee River C-43 Reservoir
- 15)Broward County Water Preserve Areas (BCWPA)
- 17)Central Everglades Planning Project (CEPP)
- 18)Loxahatchee River Watershed Restoration Project (LOWRP)
- 19)Lake Okeechobee Watershed Restoration Project (LOWRP)
- 20)Western Everglades Restoration Project (WERP)
- 21) Southern Everglades Restoration



Jupiter/Carlin Beach CSRM



C&SF Water Management | LOSOM Operations



2020 Flooding | Ft. Lauderdale



CERP Broward County WPA C-11



QUESTIONS?



11. Closing Remarks

Carolina Maran, Ph.D., P.E.
Division Director, Flood Control and Water Supply Planning
Chief of District Resiliency
South Florida Water Management District

Resiliency Coordination Forum

Feedback Survey

<https://forms.office.com/g/MkZuHNhCPZ>



Upcoming Meetings

- Wednesday, June 24, 2026
- Wednesday, October 21, 2026



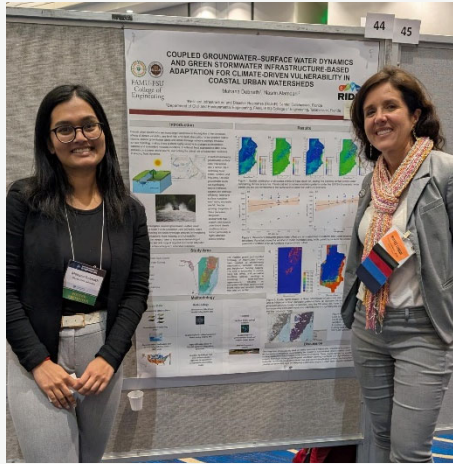
Help Us Plan Upcoming Meetings

- What topics would you like to see covered in future forum meetings?
- Do you have a topic, study, or project you would like to present at a future forum meeting?
- **Share your ideas:**
<https://forms.office.com/g/MkZuHNhCPZ>
- **Email suggestions to:**
resiliency@sfwmd.gov

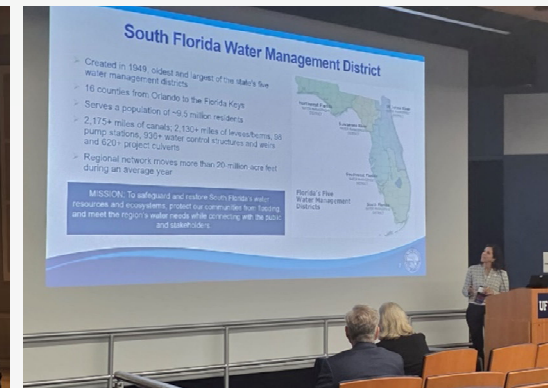
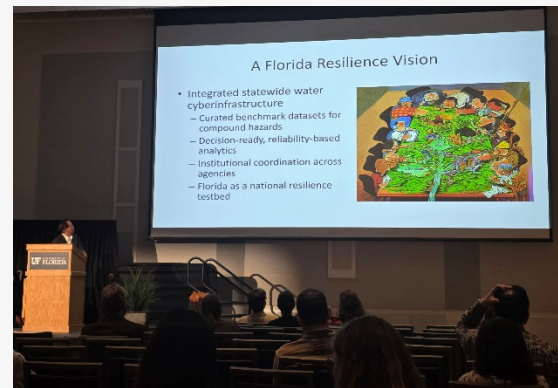


*We welcome new voices
and perspectives!*

February 24-26, 2026: 10th Biennial Water Institute Symposium



UF Water Institute
UNIVERSITY of FLORIDA



Upcoming Events



2026 FWEA South Florida Chapter Technical Seminar – Building Resilient Utilities: Innovative Sustainability in Action

- April 9, 2026
- Miami, FL



FDEP Quarterly Resiliency Forum

- May 6, 2026
- Webinar



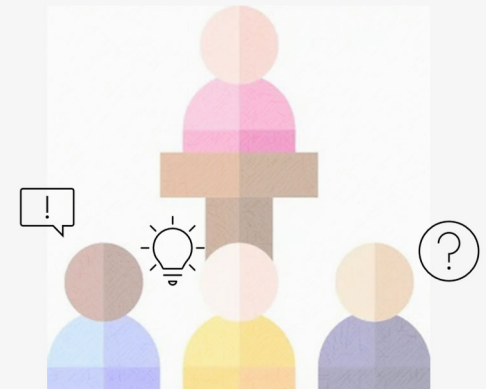
Association of State Floodplain Managers 50th Annual National Conference

- May 31 – June 4, 2026
- Milwaukee, WI



Florida Stormwater Association Annual Conference

- June 17-19, 2026
- Charlotte Harbor, FL



Please share other relevant events during “Around the Table Updates”



Upcoming Events (continued)



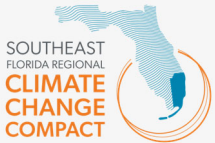
40th Annual Environmental Permitting Summer School

- July 21-24, 2026
- Marco Island, FL



5th Annual Florida Resilience Conference

- September 23–25, 2026
- Charlotte Harbor, FL



18th Annual Southeast Florida Climate Leadership Summit

- November 4-6, 2026
- Fort Lauderdale, FL

Please share other relevant events during “Around the Table Updates”





Thanks!

Carolina Maran, Ph.D., P.E.

Division Director, Flood Control and Water Supply Planning, Chief of District Resiliency, SFWMD

cmaran@sfwmd.gov

www.sfwmd.gov/resiliency