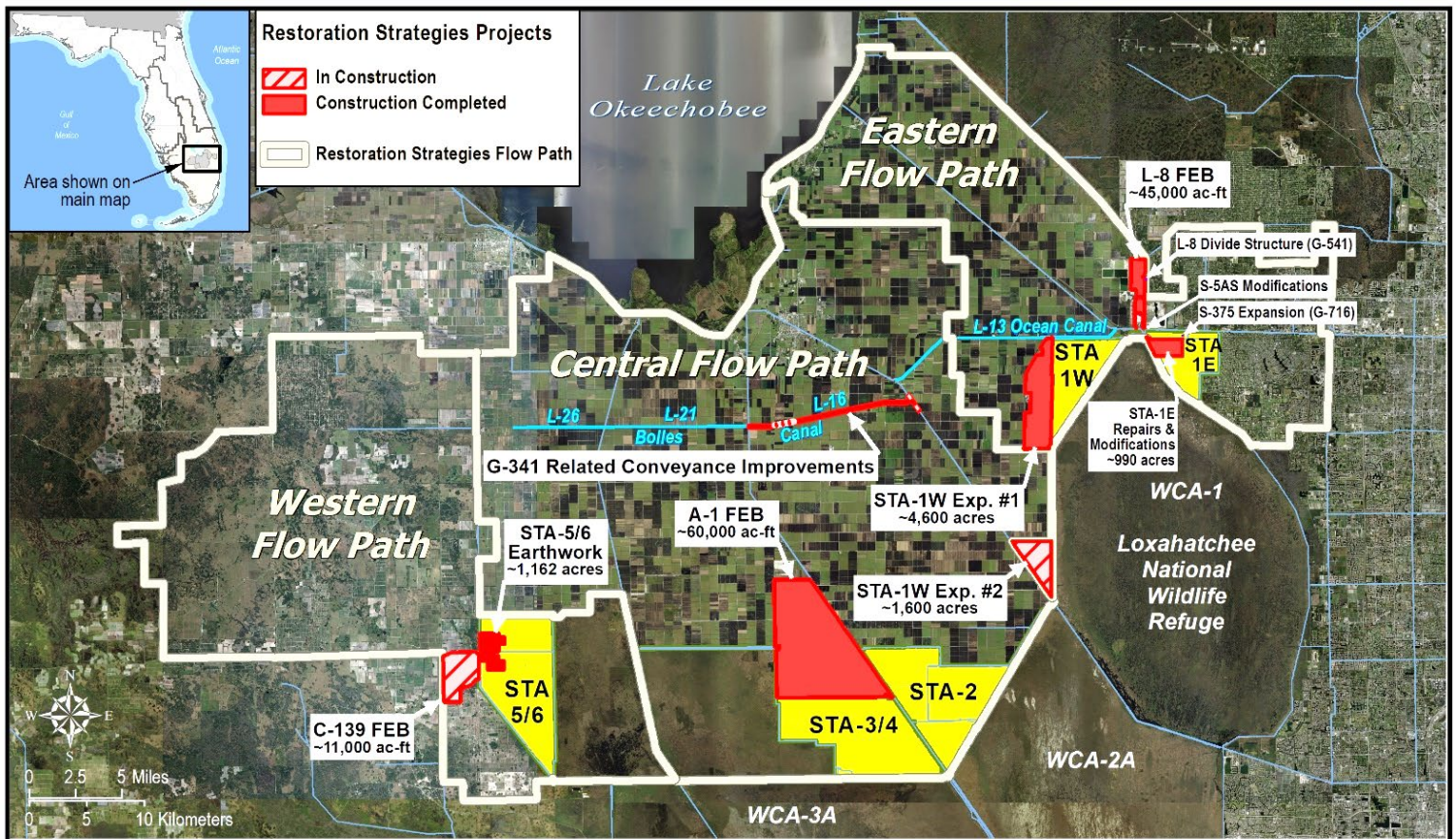


# Restoration Strategies Program and Stormwater Treatment Area Enhancement Update July 2023

The South Florida Water Management District's (District) \$880 million Restoration Strategies Program is improving water quality flowing into America's Everglades by implementing a suite of flow equalization basins (FEB's), stormwater treatment area (STA) expansions, and conveyance improvement projects over a 13-year timeline. The program includes a robust Science Plan focused on investigating the critical factors that influence phosphorus reduction and a better understanding of improving treatment performance at low phosphorus concentrations. A third part of the program is investigation of additional sub-regional source controls – where pollution is reduced at the source – in areas where phosphorus levels in stormwater runoff have been historically higher.

In 2012, FDEP issued watershed National Pollutant Discharge Elimination System (NPDES) and Everglades Forever Act (EFA) permits to the District to continue to operate its STAs. At the same time, Consent Orders were issued with these permits that require the District to construct 13 projects on an aggressive timeline to be completed by December 2025 with specific milestone due dates for each project activity. To date, nine projects and 92% of all Consent Order activities have been completed. Upon completion of all Restoration Strategies projects, the permits require each STA to meet the Water Quality Based Effluent Limit (WQBEL), to ensure that the State's water quality standard for the Everglades is achieved.

In addition to the Restoration Strategies projects, the District is enhancing the performance of all five Everglades STAs through a series of construction projects to refurbish, rehabilitate, and renew large portions of the STAs, some of which have been in operation for more than 20 years. Refurbishments are ongoing in STA-1E, STA-2 and STA-3/4.



User Name: ermoylan  
Remedy Ticket: 00166428

Map Produced: 6/10/2022 10:47:08 AM

Document Path: \\ad.sfwmd.gov\dfsroot\GIS\GSBiz\SWPROJ\LongTermPlan\mxd\20220610\_LTP\_RestorationStrategiesRegionalWQPlan\_Status.mxd

Restoration Strategies Flow Paths and Projects

# Restoration Strategies Program and Stormwater Treatment Area Enhancement Update July 2023

## Eastern Flow Path

### STA-1W Expansion #2

Construction of Civil Works and Pump Stations is ongoing. Diesel pumps, fuel pumps, and trash rakes were installed in G-780 and G-781. The operations slab and columns for G-782 are complete. Because of contractor issues beyond the control of the District, construction was not completed by the December 31, 2022 milestone due date. The District continues to work closely with the contractors to expeditiously obtain functional use of the project as early as possible.

### G-341 Related Conveyance Improvements

Segment 5 construction is complete.

### STA-1W Refurbishment

Structure repairs are scheduled for solicitation in August 2023, with award anticipated in October 2023.

## Central Flow Path

### STA-2 Refurbishment

Repair of 49 plugs in interior borrow canal of Cell 3 is ongoing, 21 plugs have been complete and sodded.

## Western Flow Path

### STA-5/6 Internal Improvements

Cells 2A and 3A are currently in the Initial Flooding and Optimization Period.

### C-139 Flow Equalization Basin (FEB)

Construction activity for the G-550 inflow pump station, G-551 outflow structure, and G711E divide structure, including the south-east expansion area, are ongoing. Levee and canal construction, and land-levelling are ongoing.

Substantial construction completion date is August 2023.

### Connection of STA-5/6 to Lake Okeechobee

Phase 1 design to improve canal conveyance, build a permanent pump station, and rely on interim facilities to connect the Miami Canal to the inflow of STA-5/6 via L-3 Canal is ongoing. Embankment/Canal Design analysis is ongoing. Construction of G-775 temporary pumps is ongoing. Expected construction completion date for G-775 is October 2023.



# Restoration Strategies Program and Stormwater Treatment Area Enhancement Update July 2023

## Restoration Strategies Science Plan

Twelve Science Plan studies have been completed and nine studies are ongoing.

### Ongoing Science Plan Studies

### Completion By

Biomarker Study .....	July 2023
Ecotopes Study .....	September 2023
L-8 FEB and STA Operational Guidance .....	September 2023
Effects of Faunal Species on P Cycling in STAs.....	November 2023
Marl Study .....	February 2024
P Dynamics Study.....	March 2024
Periphyton and Phytoplankton P Uptake and Release.....	May 2024
Landscape Study .....	July 2024
Data Integration Study .....	September 2024

Picture of the Month



C-139 FEB Pump Installation at G-780

# Restoration Strategies Program and Stormwater Treatment Area Enhancement Update July 2023

EASTERN FLOW PATH				CENTRAL FLOW PATH			
<b>STA-1W Expansion #2 (100864)</b>		<b>Activity</b>	<b>Deadline</b>				
Complete land acquisition	3/31/2018	✓					
Initiate design	10/1/2018	✓					
Submit state and federal permit applications	8/1/2019	✓					
Complete design	7/31/2020	✓					
Initiate construction	11/30/2020	✓					
Construction status report	3/1/2021	✓					
Construction status report	3/1/2022	✓					
<b>Complete construction</b>	<b>12/31/2022</b>						
Initial flooding and optimization period complete	12/31/2024						
<b>STA-1W Expansion #1 (100818)</b>		<b>Activity</b>	<b>Deadline</b>				
Complete land acquisition	9/30/2013	✓					
Initiate design	9/30/2013	✓					
Submit state and federal permit applications	7/30/2014	✓					
Complete design	7/30/2015	✓					
Initiate construction	1/31/2016	✓					
Construction status report	3/1/2017	✓					
Construction status report	3/1/2018	✓					
Complete construction	12/31/2018	✓					
Initial flooding and optimization period complete	12/31/2020	✓					
<b>STA-1E Repairs and Modifications</b>		<b>Activity</b>	<b>Deadline</b>				
PSTA Decommissioning complete	12/31/2022	✓					
Culvert repairs complete	12/31/2022	✓					
Cell 5 and 7 improvements complete	12/31/2022	✓					
<b>L-8 FEB (100813)</b>		<b>Activity</b>	<b>Deadline</b>				
Submit state and federal permit applications	1/31/2014	✓					
Construction status report	3/1/2014	✓					
Construction status report	3/1/2015	✓					
Complete construction (begin multi-purpose ops)	12/31/2016	✓					
Long term operations commence	12/31/2022	✓					
<b>G-341 Related Conveyance Improvements (100802)</b>		<b>Activity</b>	<b>Deadline</b>				
Initiate design	10/1/2020	✓					
Submit state and federal permit applications	8/1/2021	✓					
Complete land acquisition (if required)	9/30/2021	✓					
Complete design	7/31/2022	✓					
Initiate construction	11/30/2022	✓					
Construction status report	3/1/2023	✓					
Construction status report	3/1/2024	✓					
<b>Complete construction</b>	<b>12/31/2024</b>						
<b>L-8 Divide Structure (100817)</b>		<b>Activity</b>	<b>Deadline</b>				
Initiate design	10/1/2012	✓	COMPLETE				
Complete design	9/30/2014	✓					
Initiate construction	10/1/2016	✓					
Complete construction	9/30/2018	✓					
<b>S-5AS Modifications (100822)</b>		<b>Activity</b>	<b>Deadline</b>				
Initiate design	10/1/2012	✓	COMPLETE				
Complete design	9/30/2014	✓					
Initiate construction	10/1/2014	✓					
Complete construction	9/30/2016	✓					
<b>S-375 Expansion (100819)</b>		<b>Activity</b>	<b>Deadline</b>				
Initiate design	9/30/2013	✓	COMPLETE				
Complete design	7/30/2015	✓					
Initiate construction	1/31/2016	✓					
Complete construction	12/31/2018	✓					
<b>LEGEND</b>							
			Flow Equalization Basin				
			Stormwater Treatment Area				
			Conveyance Improvement				
		✓	Complete				
<b>STA-2 Expansion: Compartment B</b>		<b>Activity</b>	<b>Deadline</b>				
COMPLETE		Initial flooding and optimization period complete	5/31/2014	✓			
<b>A-1 FEB (100706)</b>		<b>Activity</b>	<b>Deadline</b>				
COMPLETE		Initiate design	4/1/2012	✓			
		Submit state and federal permit applications	12/1/2012	✓			
		Design status report	3/1/2013	✓			
		Complete design	8/1/2013	✓			
		Initiate construction	6/30/2014	✓			
		Construction status report	3/1/2015	✓			
		Construction status report	3/1/2016	✓			
		Complete construction	7/30/2016	✓			
		Operational monitoring and testing period complete	7/29/2018	✓			
<b>STA-5/6 Internal Improvements (100868)</b>		<b>Activity</b>	<b>Deadline</b>				
		Initiate design	10/31/2019	✓			
		Submit state and federal permit applications	8/30/2020	✓			
		Complete design	10/31/2021	✓			
		Initiate construction	1/31/2022	✓			
		Construction status report	3/1/2023	✓			
		Construction status report	3/1/2024	✓			
		Complete construction	12/31/2024	✓			
		Initial flooding and optimization period complete	12/31/2025	✓			
<b>STA-5/6 Expansion: Compartment C</b>		<b>Activity</b>	<b>Deadline</b>				
COMPLETE		Initial flooding and optimization period complete	5/31/2014	✓			
<b>C-139 FEB (100867)</b>		<b>Activity</b>	<b>Deadline</b>				
		Initiate design	10/31/2018	✓			
		Submit state and federal permit applications	8/30/2019	✓			
		Complete design	10/31/2020	✓			
		Initiate construction	1/31/2021	✓			
		Construction status report	3/1/2021	✓			
		Construction status report	3/1/2022	✓			
		Construction status report	3/1/2023	✓			
		<b>Complete construction</b>	<b>12/31/2023</b>				
		Operational monitoring and testing period complete	12/31/2024	✓			

Projects Complete = 9 of 13  
 Activities Complete = 68 of 74  
 % Activities Complete = 92 %  
 % Time Complete = 80 %

Revised April 20, 2023