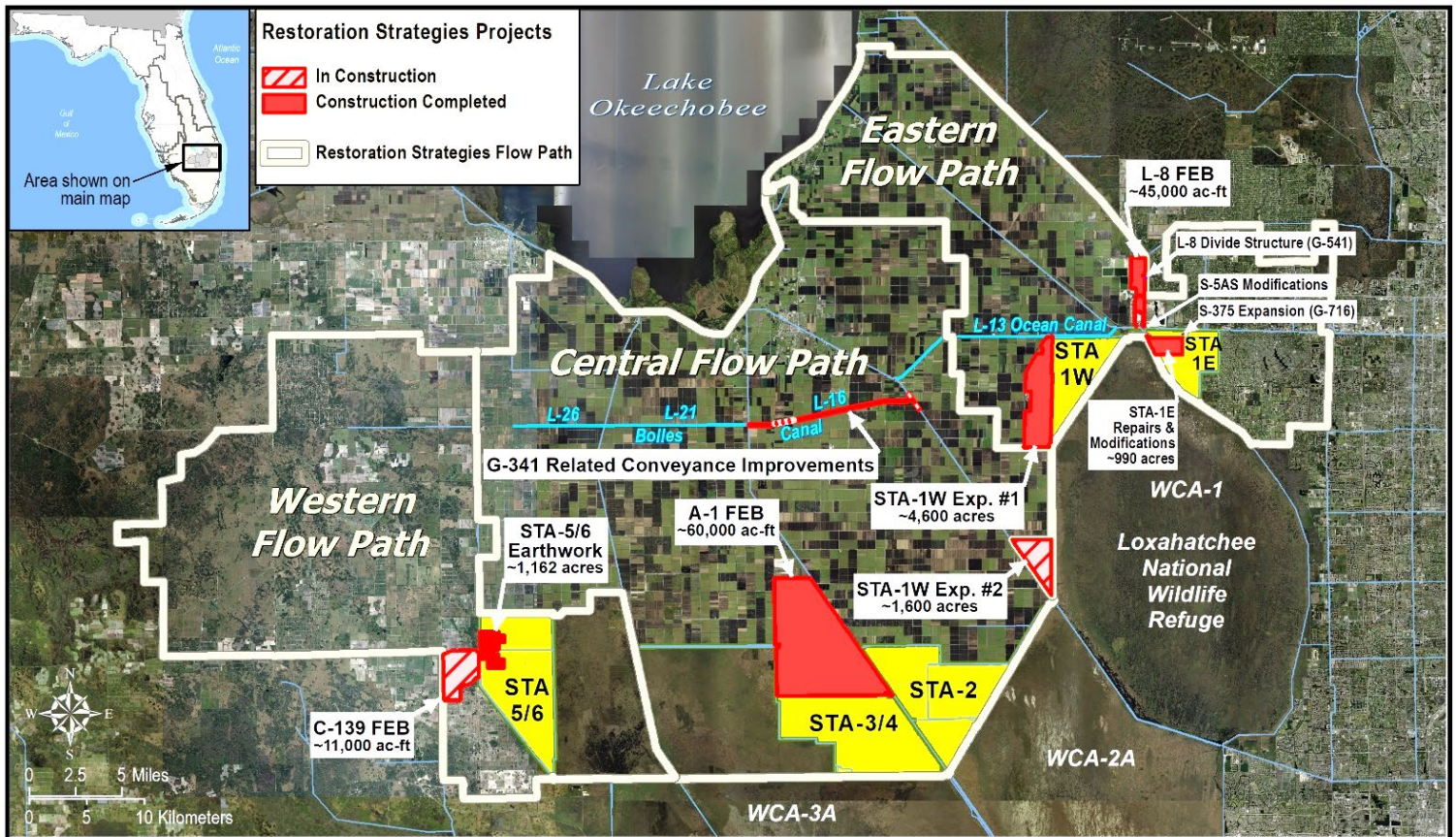


## Restoration Strategies Program and Stormwater Treatment Area Enhancement Update April 2023

The South Florida Water Management District's (District) \$880 million Restoration Strategies Program is improving water quality flowing into America's Everglades by implementing a suite of flow equalization basins (FEB's), stormwater treatment area (STA) expansions, and conveyance improvement projects over a 13-year timeline. The program includes a robust Science Plan focused on investigating the critical factors that influence phosphorus reduction and a better understanding of improving treatment performance at low phosphorus concentrations. A third part of the program is investigation of additional sub-regional source controls – where pollution is reduced at the source – in areas where phosphorus levels in stormwater runoff have been historically higher.

In 2012, FDEP issued watershed National Pollutant Discharge Elimination System (NPDES) and Everglades Forever Act (EFA) permits to the District to continue to operate its STAs. At the same time, Consent Orders were issued with these permits that require the District to construct 13 projects on an aggressive timeline to be completed by December 2025 with specific milestone due dates for each project activity. To date, ten projects and 93% of all Consent Order activities have been completed. Upon completion of all Restoration Strategies projects, the permits require each STA to meet the Water Quality Based Effluent Limit (WQBEL), to ensure that the State's water quality standard for the Everglades is achieved.

In addition to the Restoration Strategies projects, the District is enhancing the performance of all five Everglades STAs through a series of construction projects to refurbish, rehabilitate, and renew large portions of the STAs, some of which have been in operation for more than 20 years. Refurbishments have been completed at STA-1E, STA-1W, and STA-3/4.



User Name: ermoylan  
Remedy Ticket: 00166428

Map Produced: 6/10/2022 10:47:08 AM

Document Path: \\ad.sfwmd.gov\dfsroot\GIS\GSBizi\SWPROJ\LongTermPlan\mxd\20220610\_LTP\_RestorationStrategiesRegionalWQPlan\_Status.mxd

Restoration Strategies Flow Paths and Projects

[www.sfwmd.gov/restorationstrategies](http://www.sfwmd.gov/restorationstrategies)

# Restoration Strategies Program and Stormwater Treatment Area Enhancement Update April 2023

## Eastern Flow Path

### STA-1W Expansion #2

Construction of Civil Works and Inflow Pump Stations is ongoing. Formwork and reinforcing steel installation activities for pump stations G-780, G-781 and G-782 are ongoing. Because of contractor issues beyond the control of the District, construction was not completed by the December 31, 2022 milestone due date. The District continues to work closely with the contractor to expeditiously obtain functional use of the project as early as possible.

### G-341 Related Conveyance Improvements

Segment 5 construction is ongoing. Construction of the Star Farms bridge near completion. Kennedy Bridge construction is ongoing with completion expected by early May 2023.

### STA-1W Refurbishment

Vegetation management activities are ongoing in newly graded areas. RTA for replacement of structures between Cells 1B and 3 in June 2023.

## Central Flow Path

### STA-2 Refurbishment

Received GB contract approval for fill to repair 49 canal plugs in Cell 3 and remaining 22 canal plugs in Cell 2. Cell 3 earthwork is ongoing.

## Western Flow Path

### C-139 Flow Equalization Basin (FEB)

Construction activity for the G-550 inflow pump station, G-551 outflow structure, and G711E divide structure, including the south-east expansion area, are ongoing. Levee and canal construction, and land-levelling are ongoing. Substantial construction completion date is August 2023.

### Connection of STA-5/6 to Lake Okeechobee

Phase 1 design to improve canal conveyance, build a permanent pump station, and rely on interim facilities to connect the Miami Canal to the inflow of STA-5/6 via L-3 Canal is ongoing. Embankment/Canal Design analysis is ongoing. Backcheck reviews of (1) preliminary design submittal and (2) final design of G-775 Interim Pumps are currently ongoing. Expected construction completion date for G-775 is October 2023.



# Restoration Strategies Program and Stormwater Treatment Area Enhancement Update April 2023

## Restoration Strategies Science Plan

Eleven Science Plan studies have been completed and ten studies are ongoing.

### Ongoing Science Plan Studies

### Completion By

Marl Study .....	June 2023
Biomarker Study.....	July 2023
Ecotopes Study .....	September 2023
L-8 FEB and STA Operational Guidance .....	September 2023
Landscape Study.....	September 2023
Effects of Faunal Species on P Cycling in STAs.....	November 2023
P Dynamics Study.....	March 2024
Periphyton and Phytoplankton P Uptake and Release.....	May 2024
Advection Study.....	September 2024
Data Integration Study .....	September 2024

Picture of the Month



G-341 Conveyance Improvements: Kennedy Farms bridge construction and Segment 5 canal improvements

# Restoration Strategies Program and Stormwater Treatment Area Enhancement Update April 2023

EASTERN FLOW PATH				CENTRAL FLOW PATH			
<b>STA-1W Expansion #2 (100864)</b>		<b>Activity</b>	<b>Deadline</b>	<b>G-341 Related Conveyance Improvements (100802)</b>		<b>Activity</b>	<b>Deadline</b>
Complete land acquisition	3/31/2018	✓		Initiate design	10/1/2020	✓	
Initiate design	10/1/2018	✓		Submit state and federal permit applications	8/1/2021	✓	
Submit state and federal permit applications	8/1/2019	✓		Complete land acquisition (if required)	9/30/2021	✓	
Complete design	7/31/2020	✓		Complete design	7/31/2022	✓	
Initiate construction	11/30/2020	✓		Initiate construction	11/30/2022	✓	
Construction status report	3/1/2021	✓		Construction status report	3/1/2023	✓	
Construction status report	3/1/2022	✓		Construction status report	3/1/2024	✓	
<b>Complete construction</b>	<b>12/31/2022</b>			<b>Complete construction</b>	<b>12/31/2024</b>		
Initial flooding and optimization period complete	12/31/2024						
<b>STA-1W Expansion #1 (100818)</b>		<b>Activity</b>	<b>Deadline</b>	<b>L-8 Divide Structure (100817)</b>		<b>Activity</b>	<b>Deadline</b>
Complete land acquisition	9/30/2013	✓		Initiate design	10/1/2012	✓	
Initiate design	9/30/2013	✓		Complete design	9/30/2014	✓	
Submit state and federal permit applications	7/30/2014	✓		Initiate construction	10/1/2016	✓	
Complete design	7/30/2015	✓		Complete construction	9/30/2018	✓	
Initiate construction	1/31/2016	✓					
Construction status report	3/1/2017	✓					
Construction status report	3/1/2018	✓					
Complete construction	12/31/2018	✓					
Initial flooding and optimization period complete	12/31/2020	✓					
<b>STA-1E Repairs and Modifications</b>		<b>Activity</b>	<b>Deadline</b>	<b>S-SAS Modifications (100822)</b>		<b>Activity</b>	<b>Deadline</b>
PSTA Decommissioning complete	12/31/2022	✓		Initiate design	10/1/2012	✓	
Culvert repairs complete	12/31/2022	✓		Complete design	9/30/2014	✓	
Cell 5 and 7 improvements complete	12/31/2022	✓		Initiate construction	10/1/2014	✓	
				Complete construction	9/30/2016	✓	
<b>L-8 FEB (100813)</b>		<b>Activity</b>	<b>Deadline</b>	<b>S-375 Expansion (100819)</b>		<b>Activity</b>	<b>Deadline</b>
Submit state and federal permit applications	1/31/2014	✓		Initiate design	9/30/2013	✓	
Construction status report	3/1/2014	✓		Complete design	7/30/2015	✓	
Construction status report	3/1/2015	✓		Initiate construction	1/31/2016	✓	
Complete construction (begin multi-purpose ops)	12/31/2016	✓		Complete construction	12/31/2018	✓	
Long term operations commence	12/31/2022	✓					
				<b>LEGEND</b> <span style="display: inline-block; width: 15px; height: 15px; background-color: #add8e6; border: 1px solid black; margin-right: 5px;"></span> Flow Equalization Basin <span style="display: inline-block; width: 15px; height: 15px; background-color: #90ee90; border: 1px solid black; margin-right: 5px;"></span> Stormwater Treatment Area <span style="display: inline-block; width: 15px; height: 15px; background-color: #ffcc99; border: 1px solid black; margin-right: 5px;"></span> Conveyance Improvement ✓ Complete			
<b>STA-2 Expansion: Compartment B</b>		<b>Activity</b>	<b>Deadline</b>	<b>COMPLETE</b>			
		Initial flooding and optimization period complete	5/31/2014				
<b>A-1 FEB (100706)</b>		<b>Activity</b>	<b>Deadline</b>	<b>COMPLETE</b>			
		Initiate design	4/1/2012				
		Submit state and federal permit applications	12/1/2012				
		Design status report	3/1/2013				
		Complete design	8/1/2013				
		Initiate construction	6/30/2014				
		Construction status report	3/1/2015				
		Construction status report	3/1/2016				
		Complete construction	7/30/2016				
		Operational monitoring and testing period complete	7/29/2018				
<b>STA-5/6 Internal Improvements (100868)</b>		<b>Activity</b>	<b>Deadline</b>	<b>COMPLETE</b>			
		Initiate design	10/31/2019				
		Submit state and federal permit applications	8/30/2020				
		Complete design	10/31/2021				
		Initiate construction	1/31/2022				
		Construction status report	3/1/2023				
		Construction status report	3/1/2024				
		Complete construction	12/31/2024				
		Initial flooding and optimization period complete	12/31/2025				
<b>STA-5/6 Expansion: Compartment C</b>		<b>Activity</b>	<b>Deadline</b>	<b>COMPLETE</b>			
		Initial flooding and optimization period complete	5/31/2014				
<b>C-139 FEB (100867)</b>		<b>Activity</b>	<b>Deadline</b>	<b>COMPLETE</b>			
		Initiate design	10/31/2018				
		Submit state and federal permit applications	8/30/2019				
		Complete design	10/31/2020				
		Initiate construction	1/31/2021				
		Construction status report	3/1/2021				
		Construction status report	3/1/2022				
		Construction status report	3/1/2023				
		<b>Complete construction</b>	<b>12/31/2023</b>				
		Operational monitoring and testing period complete	12/31/2024				

Projects Complete = 10 of 13  
 Activities Complete = 69 of 74  
 % Activities Complete = 93 %  
 % Time Complete = 79 %

Revised February 20, 2023