

## MEMORANDUM

**TO:** Laureen Borochaner, Chief, Engineering Division (USACE)  
**FROM:** John Mitnik, Chief District Engineer (SFWMD)  
**DATE:** May 15, 2025  
**SUBJECT:** System Operational Position Statement May 13, 2025 to May 19, 2025

This Position Statement is to provide operational input for the one-week period from May 13, 2025 to May 19, 2025 based on system conditions and data observed during the previous Monday to Sunday 7-day period.

Current climate conditions: District May rainfall to date is much above normal (191% of normal). The rainfall forecast (issued May 13) calls for much below normal rainfall for the coming 7-day period and the following one.

Climate and weather forecasts: The most recent CPC precipitation outlook for May 2025 is equal chances of below, normal and above normal rainfall (EC) for the entire District. ENSO-neutral is favored during the Northern Hemisphere summer, with a greater than 50% chance through August-October 2025. The 3-month window of May 2025 – Jul 2025 indicates slightly increased chances (33-40%) of above normal rainfall for south Florida. The 3-month window of Jun 2025 – Aug 2025 shows outlook for increased chances (40-50%) of above normal rainfall for the Kissimmee River and north and slightly increased chances (33-40%) of above normal rainfall for the remainder of the District. The 3-month windows of Jul 2025 – Sep 2025 and Aug 2025 – Oct 2025 show increased chances (40-50%) of above Normal rainfall for Lake Okeechobee and north and for the Kissimmee River and north respectively, and slightly increased chances (33-40%) of above normal rainfall for the respective remainder areas of the District. The 3-month windows of Sep 2025 – Nov 2025 shows slightly increased chances (33-40%) of above Normal rainfall for Lake Okeechobee and north and for the Kissimmee River and north respectively, and increased chances (40-50%) of above normal rainfall for the respective remainder areas of the District. The transition into the 2026 – 2026 Dry Season goes through the 3-month window of Oct 2025 – Dec 2025 showing equal chances of below, normal and above normal rainfall (EC) for the entire District. The outlooks for the 3-month windows from Nov 2025 – Jan 2026 to Jan 2026 – Mar 2026 indicate increased chances (40-50%) of below normal rainfall for the entire District.

Hydrologic and tropical outlooks: Current climatological conditions are Normal. Current hydrological conditions are Dry. Based on conditions at the start of the month, the lake stage is projected to remain in Zone D and briefly enter the Water Shortage Management Band in mid-June.

Water-supply conditions: The Lake Okeechobee seasonal net inflow outlook is Normal to Extremely Wet and at Low risk for water supply. The multi-seasonal net inflow outlook is Normal and at Moderate risk for water supply.

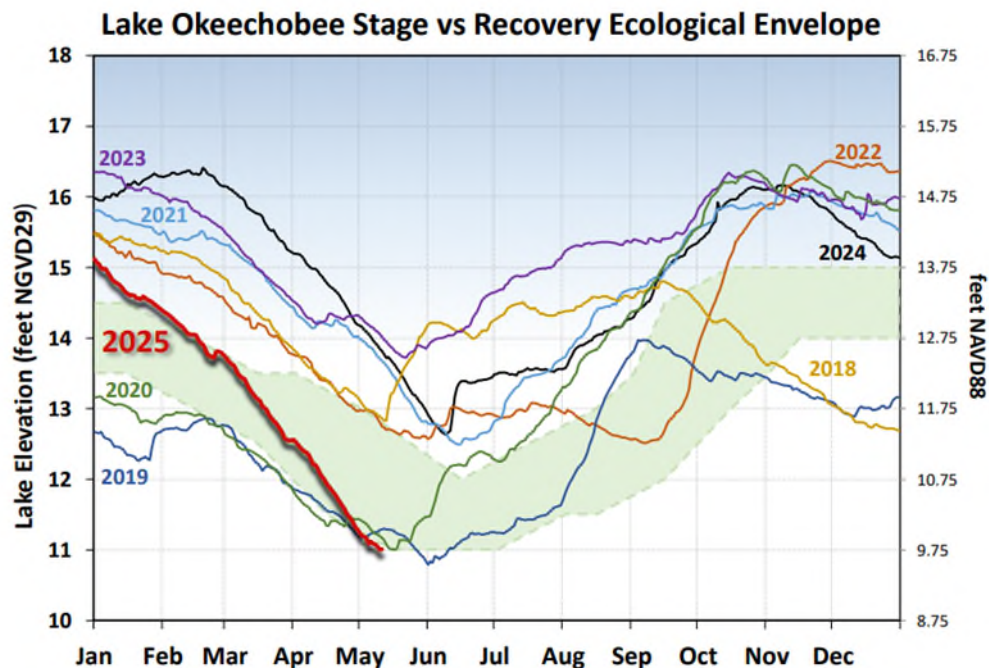
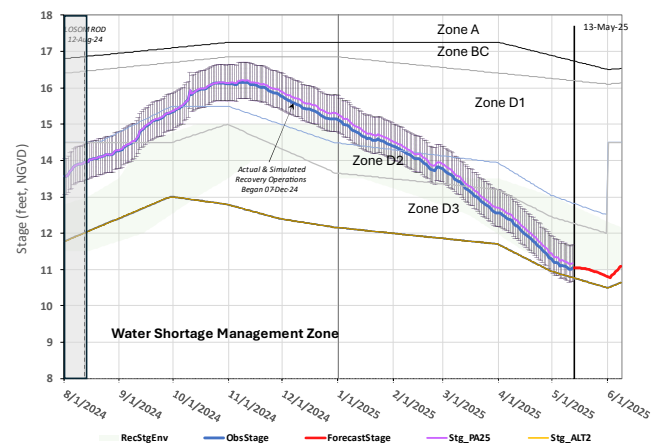
Estuary conditions: For the 7-day period, May 5 to May 11, 2025, total inflow to the Caloosahatchee Estuary averaged approximately 400 cfs with about 250 cfs coming from Lake Okeechobee through S-77. Salinities in the upper estuary were within the optimal range (0-10) for tape grass. Salinities were in the optimal range (10-25) for adult eastern oysters at Cape Coral, and in the upper stressed range (>25) at Sanibel and Shell Point. Total discharge to the St. Lucie Estuary was about 100 cfs with no flow coming from Lake Okeechobee, the C-44 Basin, C-23 and C-24 Basin, and the Tidal Basin. The average salinity in the middle estuary was within the optimum (10-25) for adult eastern oysters.

### Lake Okeechobee stage and ecological conditions:

On May 11 the daily average Lake Okeechobee stage was 9.71 feet NAVD88 (11.01 feet NGVD29), which placed it within the lower portion of Zone D (Zone D3 of the PA25 simulation) of the Lake Okeechobee System Operating Manual (LOSOM). Lake stage decreased by 0.15 feet over the preceding 7-day period. ENSO-neutral conditions are present and is favored during the summer. The LOSOM criteria to implement Recovery Operations to lower the lake level into Lake Okeechobee's Recovery Envelope has been triggered. The District continues to monitor conditions in the estuaries, as well as the systemwide conditions, as the dry season progresses. As such, the District recommends that USACE should continue non-harmful Recovery Operations for Lake Okeechobee as described in LOSOM recognizing that there is a higher chance to achieve Recovery targets. To maintain favorable salinity levels in the estuaries and begin to conserve water, it is recommended that flow targets for the Caloosahatchee Estuary should ensure the delivery of the Minimum Flow and Level via a targeted steady release of 500 cfs and operational changes at S-77, S-78, and S-79 should be implemented to ensure the 500 cfs is delivered on a daily basis; flow targets for the St. Lucie Estuary should remain at 0 cfs, and the flow target for the Lake Worth Lagoon should remain at 0 cfs. The District will continue to monitor salinity conditions in the estuaries and water supply conditions throughout the system as the dry season progresses to assess future operational recommendations. The USACE typically implements the releases to the estuaries over a 7-day period starting on Saturday and ending on Friday.

### Forecast Modeling Based on PA25 Simulation

Lake Okeechobee Hindcast & Forecasts\* [S79/S80: 500/0]



The current and seven prior years' annual stage hydrographs for Lake Okeechobee in comparison to the recovery envelope (light green). A shift from the normal ecological envelope to the recovery envelope occurred because the 30-day minimum lake stage (elevations exposed for at least 30 days, nonconsecutively) in the June 1 – July 31, 2023 window was >11.75 feet NAVD88 (13 feet NGVD29).

Navigation and recreation conditions: Currently, there are no planned deviation or declared water shortage impacting navigation or lockages.

STOF water supply conditions: Current Lake Okeechobee stage is sufficiently high that water supply deliveries to the Seminole Tribe of Florida (STOF) Brighton Reservation, if needed, will not be impacted. When Lake Okeechobee stage recedes below 8.75 feet NAVD88 (10 feet NGVD29) and 6.75 feet NAVD88 (8 feet NGVD29), water supply delivery is not achievable via Pump Station G-207 on the Harney Pond Canal and Pump Station G-208 on the Indian Prairie Canal, respectively, as the respective canals become disconnected from Lake Okeechobee.

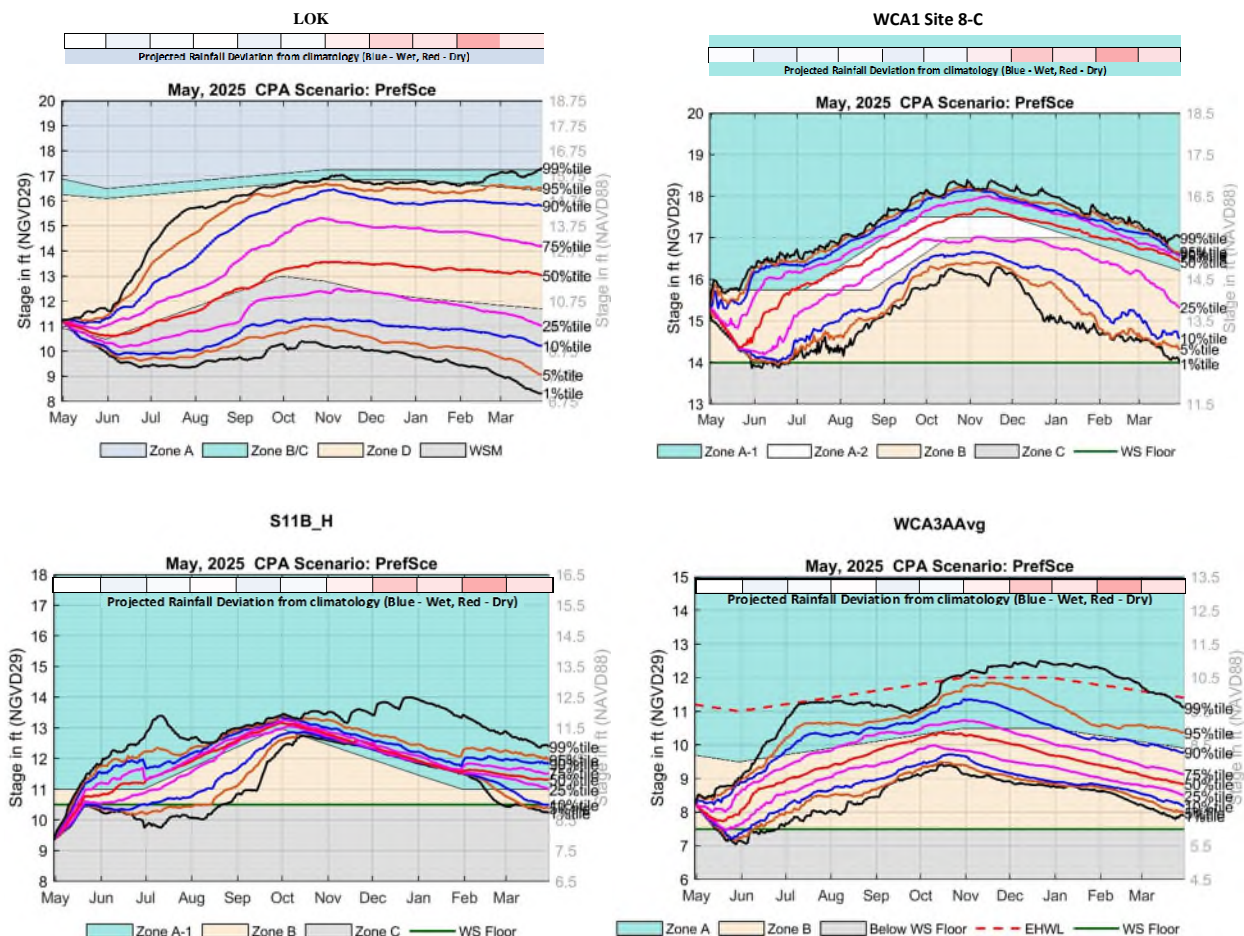
Algal Bloom conditions: The Fish and Wildlife Research Institute reported on May 9, 2025, that *Karenia brevis*, the Florida red tide dinoflagellate, was not observed in any samples collected within the District region. In the most recent non-obscured satellite image from May 8, 2025, NOAA's Harmful Algal Bloom Monitoring System suggests moderate cyanobacteria activity in and around Fisheating Bay, and along the northwest shoreline.

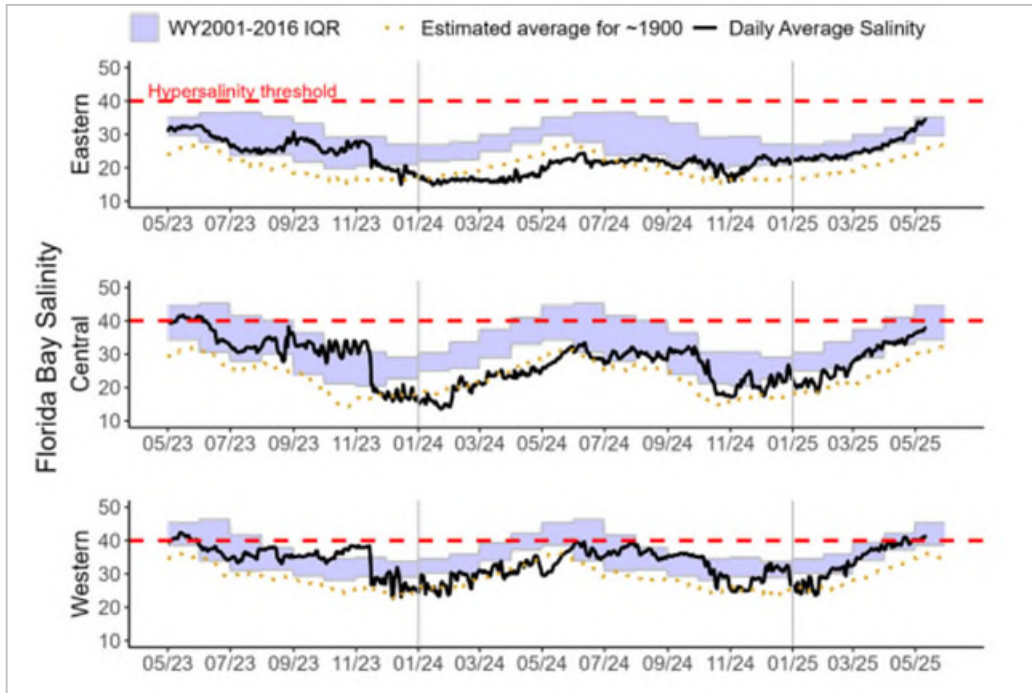
STA conditions: In STA-1E, Central Flow-way is offline for construction activities. An operational restriction is in place in the Western Flow-way for post-construction vegetation grow-in. Online treatment cells are near target stage. In STA-1W, treatment cells are near target stage. Vegetation in the Western and Eastern flow-ways is highly stressed. The 365-day PLRs for the Eastern, Western, and Northern Flow-ways are high ( $\geq 1.0$  g/m<sup>2</sup>/yr). STA-2 Flow-way 3 is offline for a SAV recovery drawdown. Operational restrictions are in place in Flow-ways 2 and 4 for vegetation management activities. An additional restriction is in place for inflow canal dredging in Flow-way 1. Online treatment cells are near target stage. Vegetation in Flow-ways 2 is stressed, and in 5 is highly stressed. The 365-day PLRs for flow-ways 2 are high ( $\geq 1.0$  g/m<sup>2</sup>/yr). In STA-3/4, Eastern Flow-way is under limitations for post-drawdown vegetation grow-in. Treatment cells are near or above target stage, vegetation in the Central flow-ways is highly stressed, and the 365-day PLRs for the Central and Western Flow-ways are high ( $\geq 1.0$  g/m<sup>2</sup>/yr). For the current operational period, USACE is not requesting flows south from Lake Okeechobee towards the WCAs. The District will continue to work with the USACE to manage Lake Okeechobee levels in an effort to curtail harmful discharges over this year. To help with this objective the District will move as much water south through the Stormwater Treatment Areas as possible under the current permits as regional conditions allow.

WCA conditions: On May 11 the daily average stage in WCA-1 was at 13.77 feet NAVD88 (15.37 feet NGVD29), in Zone B and 0.44 feet below regulation schedule. The daily average stage in WCA-2A was at 7.90 feet NAVD88 (9.50 feet NGVD29), below the floor and 1.50 feet below regulation schedule. The daily average stage in WCA-3A was at 7.08 feet NAVD88 (8.604 feet NGVD29), in Zone B and 1.10 feet below regulation schedule. Over the 7-day period, May 5 to May 11, 2025, a total of 3,700 acre-feet were sent from Lake Okeechobee south to STA-2. No Lake regulatory releases reached the Lake Worth Lagoon through the C-51 canal during this period.

ENP conditions: Releases from WCA-3A to the ENP continue through the S-12C/D and S333 structures. Hydrologic connectivity within ENP have diminished, with Shark River and Taylor Slough now showing below ground conditions indicating lack of connectivity to the coast and Florida Bay. There is very little water left in the WCAs. Conditions are continuing to dry out in WCA-3A South and Central; a reduction in suitable wading bird foraging habitat is happening quickly. Most of the Big Cypress Basin is significantly below soil surface. Stages decreased in Taylor Slough last week and remain below the recent average. Salinity increased on average in Florida Bay compared to last week and is now above the estimated average for 1900 and within the WY2001-2016 Interquartile Range (IQR) for all three regions, nearing 75th percentile in the eastern region. The Tamiami Trail Flow Formula (TTFF) recommends 279 cfs of daily target releases from WCA-3A to ENP. The District recommends continuing with the current operations for the releases from WCA-3A in accordance with the Combined Operating Plan.

May 2025 Conditional Position Analysis (CPA) results for Lake Okeechobee, WCA-1, WCA-2A and WCA-3A under LOSOM Recovery Operations.





Eastern (top panel), Central (middle panel) and Western (bottom panel) Florida Bay daily average salinities with WY2001-2016 interquartile (25-75 percentile) ranges (IQR) and estimated historical daily average salinities. The hyper salinity threshold indicates the level at which salinities start to become harmful to seagrass.