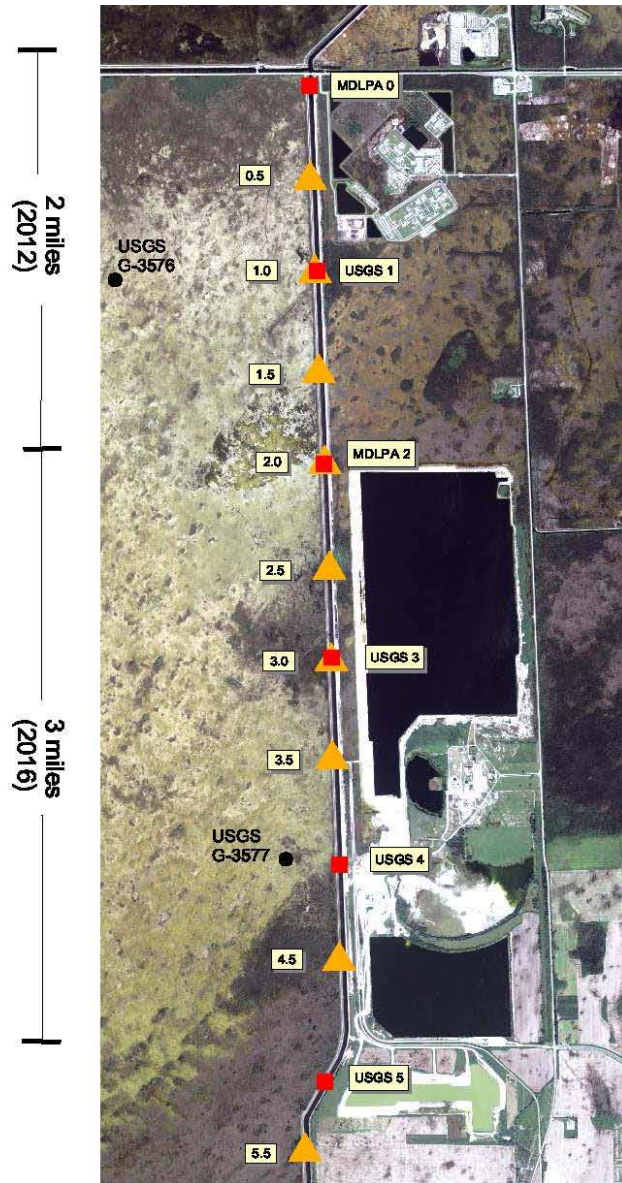


L-31N Updated Monitoring Program

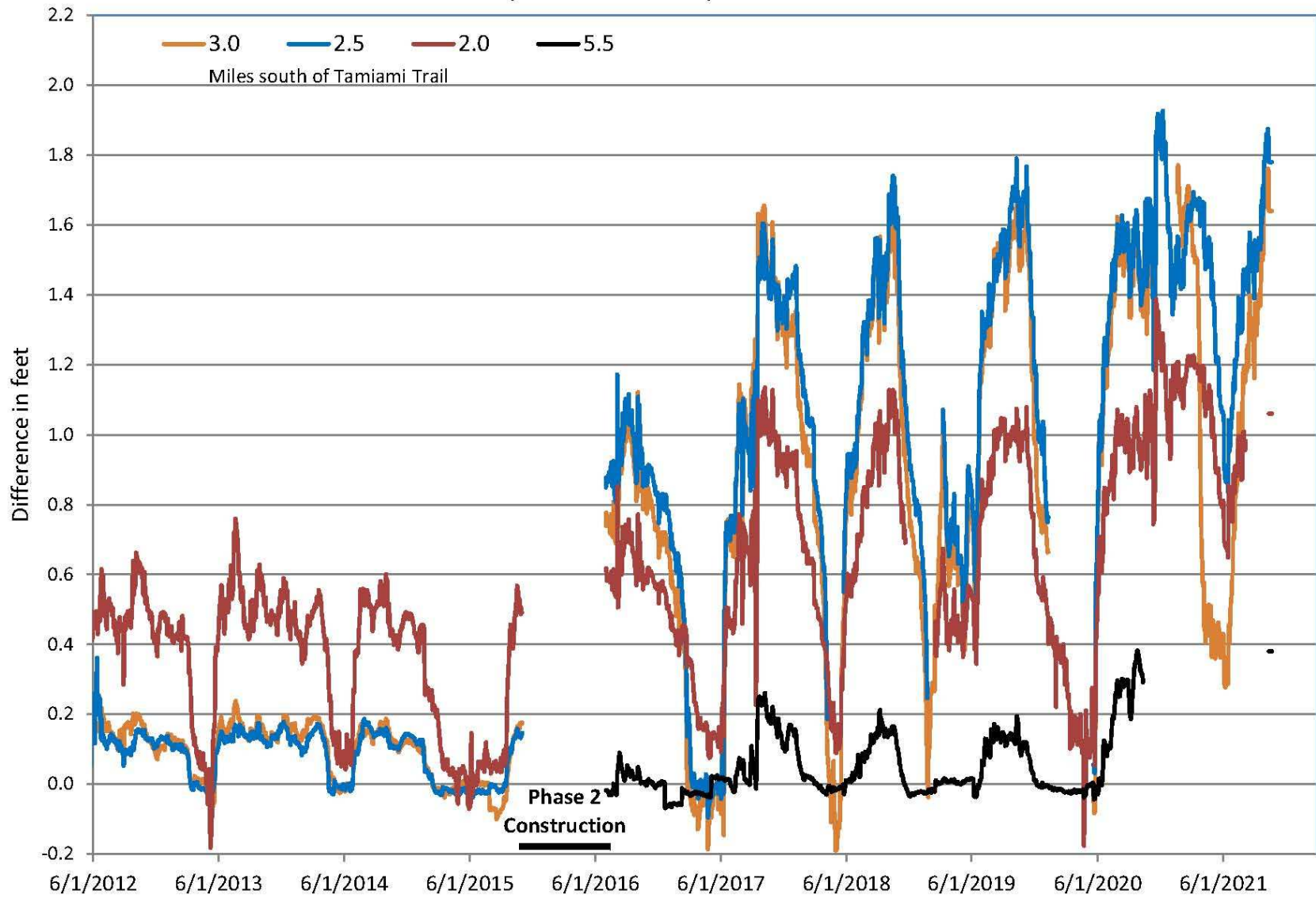
3 years of monitoring after
completion of 2-mile barrier
plus
5 years of monitoring after
completion of 5-mile barrier



Paired Monitoring Wells ▲ Flowmeters ■

Groundwater Stage Difference Across Barrier (Difference between paired water table wells upstream and downstream of the barrier at each specified location)

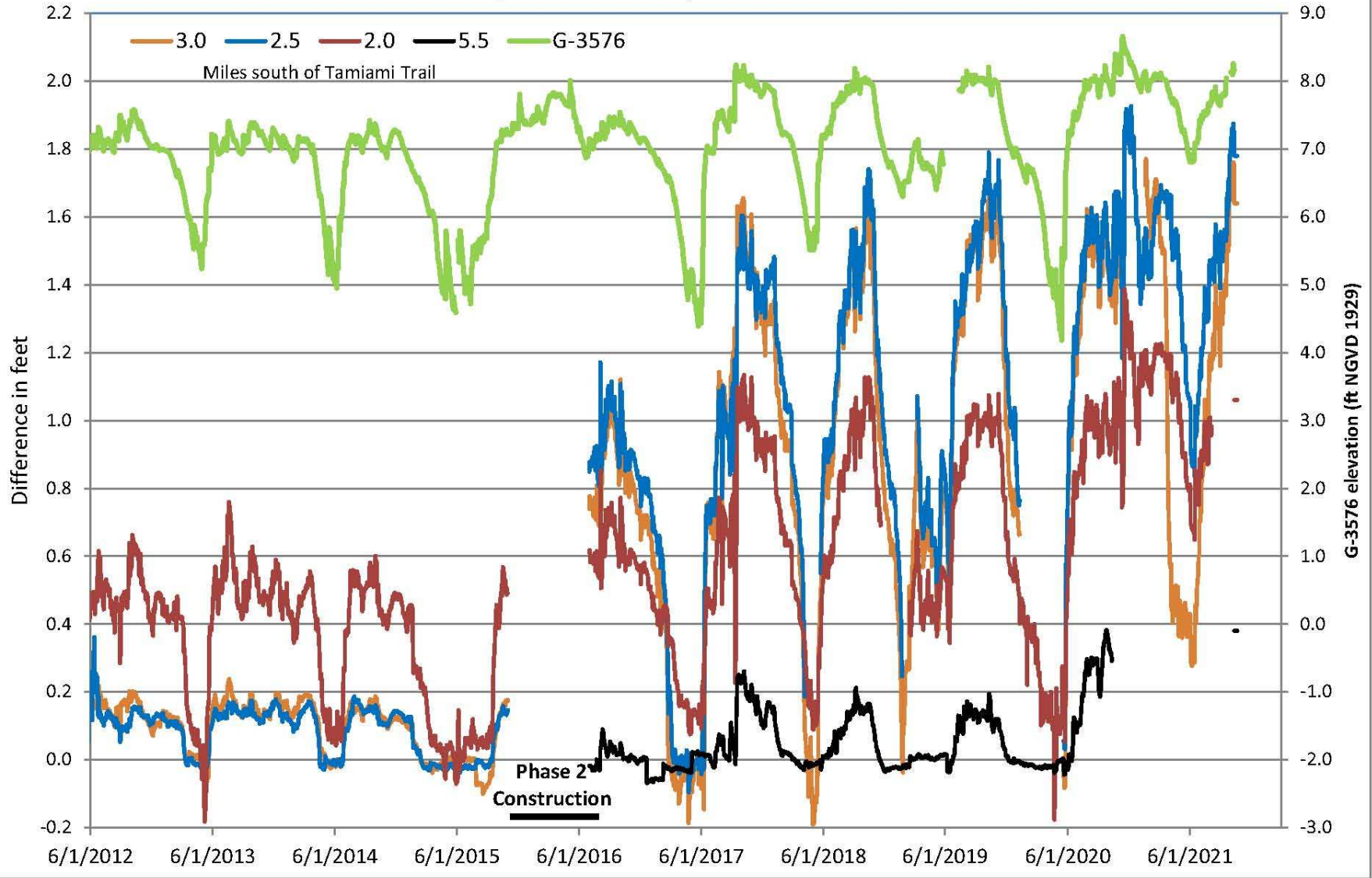
The northern 2 miles of barrier were completed in 2012. The remaining 3 miles were completed in April 2016.



Groundwater Stage Difference Across Barrier

(Difference between paired water table wells upstream and downstream of the barrier at each specified location)

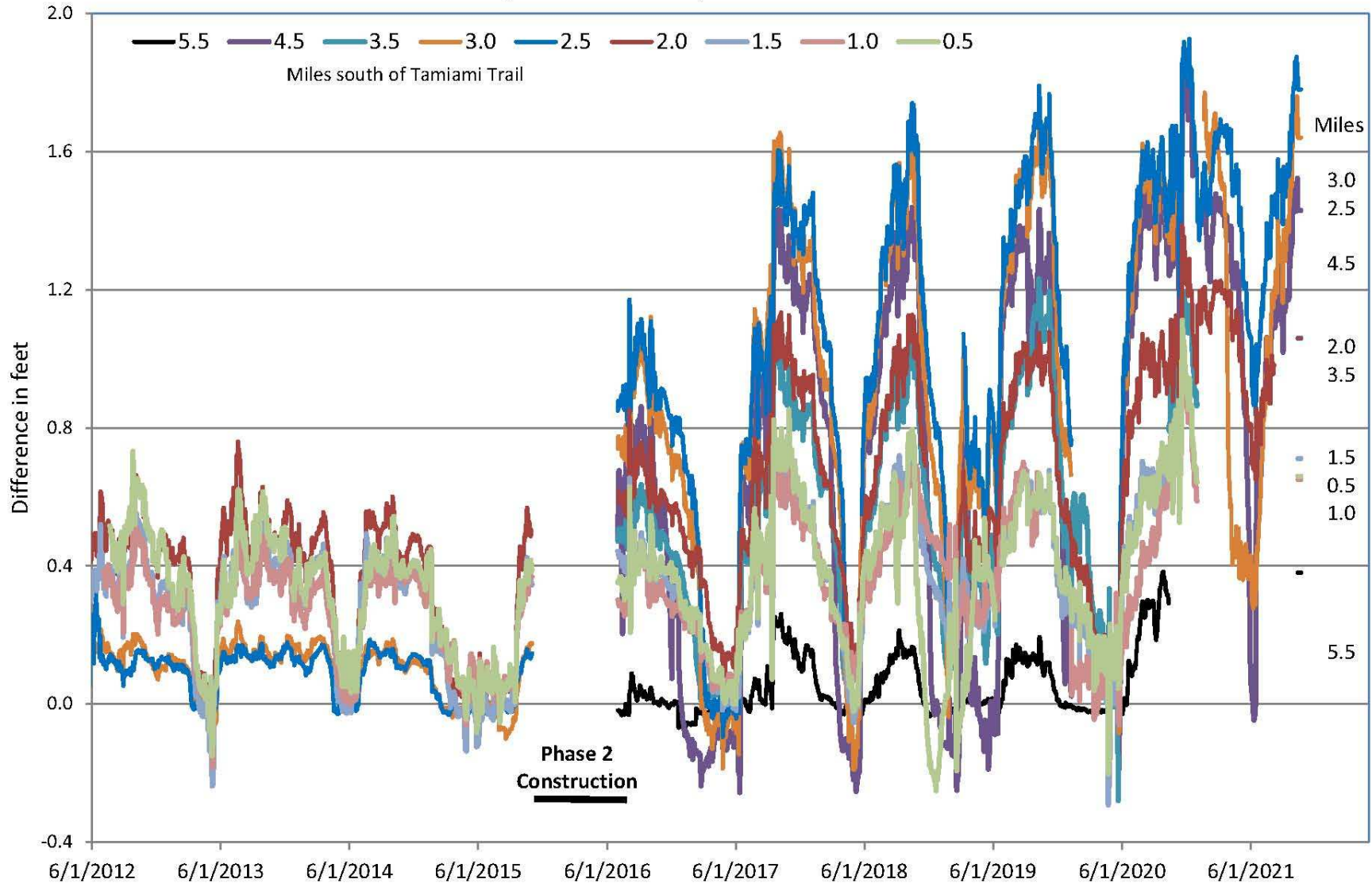
The northern 2 miles of barrier were completed in 2012. The remaining 3 miles were completed in April 2016.

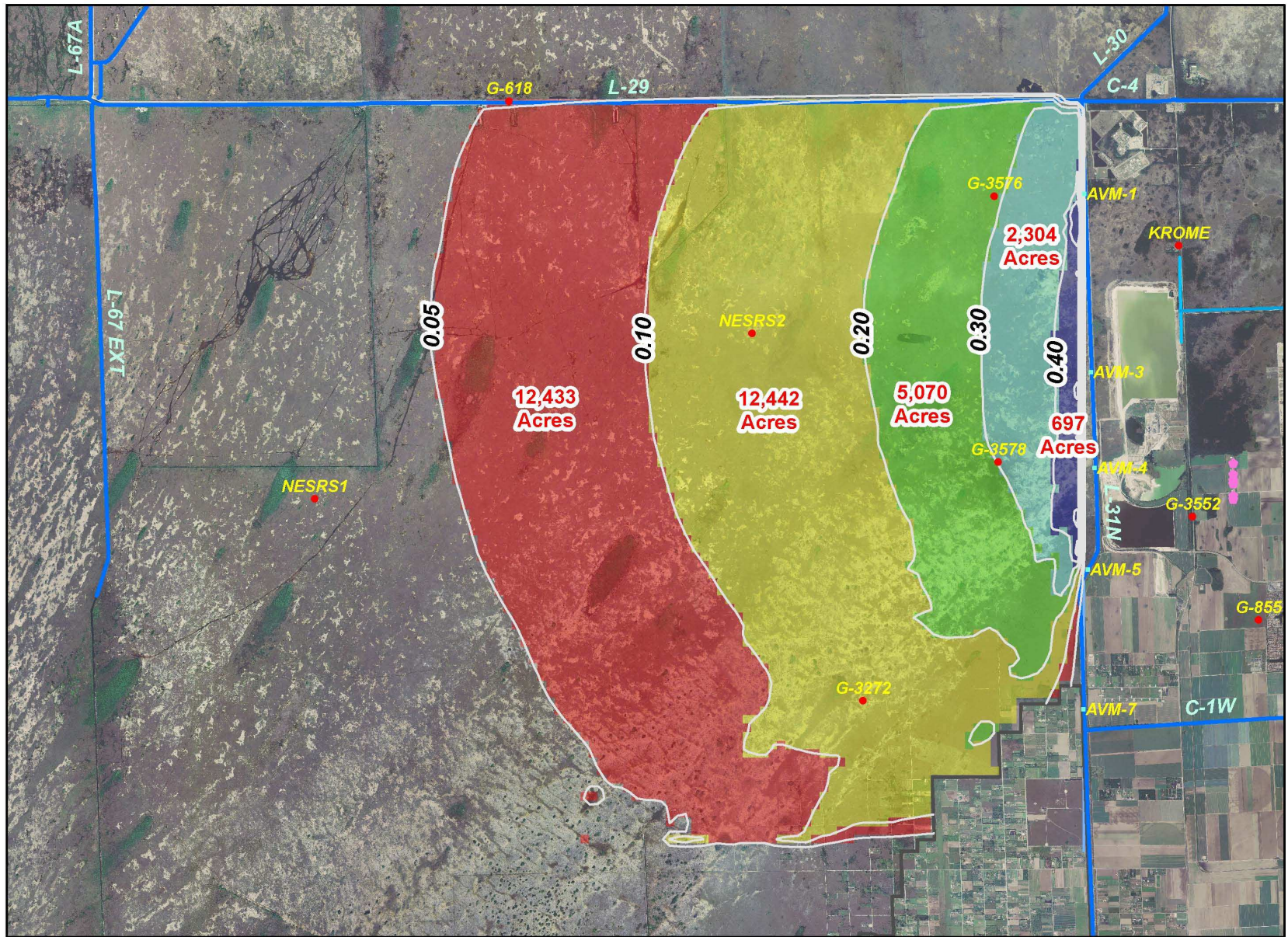


Groundwater Stage Difference Across Barrier

(Difference between paired water table wells upstream and downstream of the barrier at each specified location)

The northern 2 miles of barrier were completed in 2012. The remaining 3 miles were completed in April 2016.





Effect of a 5-Mile Barrier Wall on Groundwater Levels Inside the ENP
Barrier Depth: 30 ft; Daily Average: 7/1/2008-10/31/2008 (Wet)

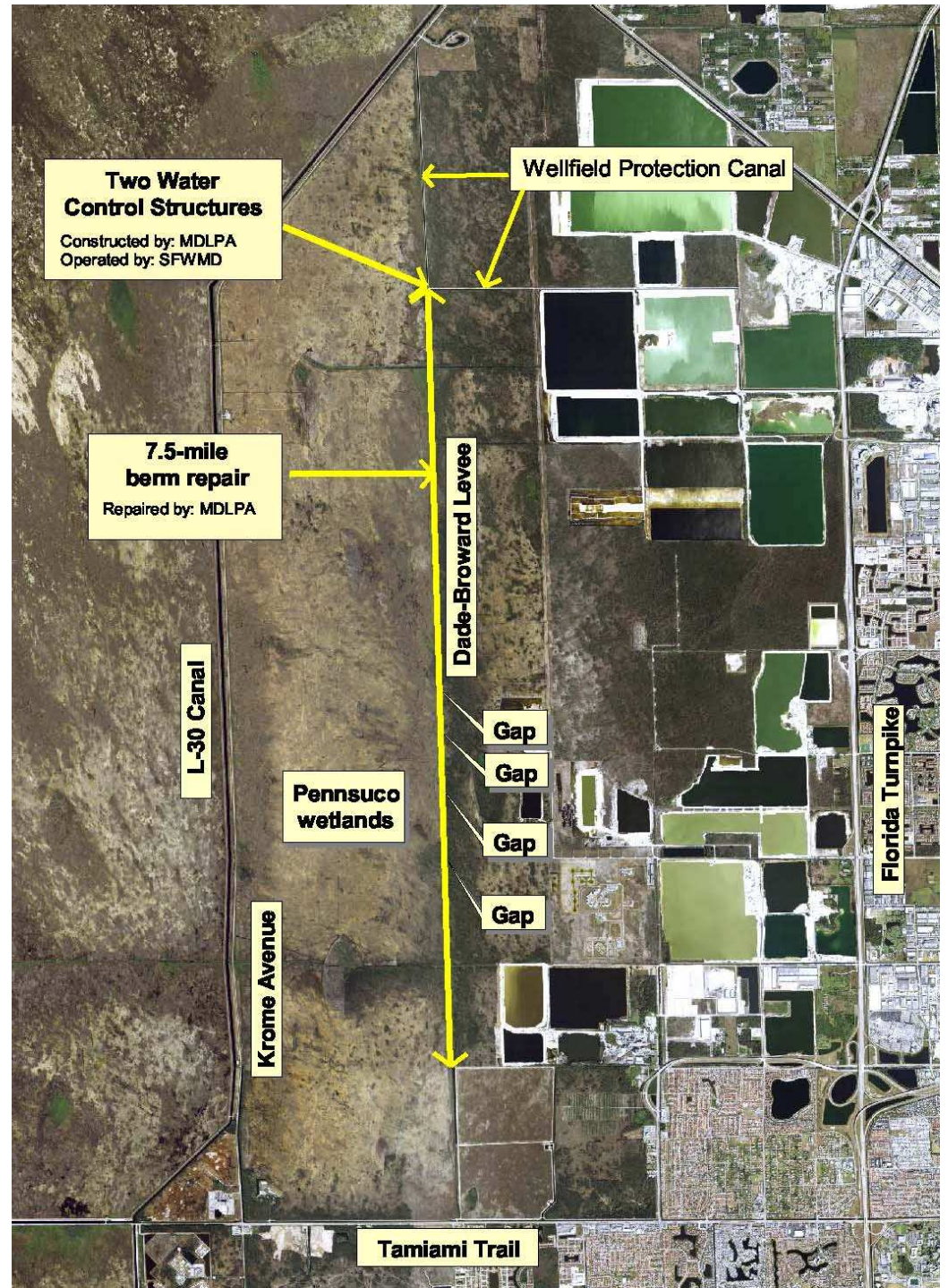
January 2016



Dade-Broward Levee Project

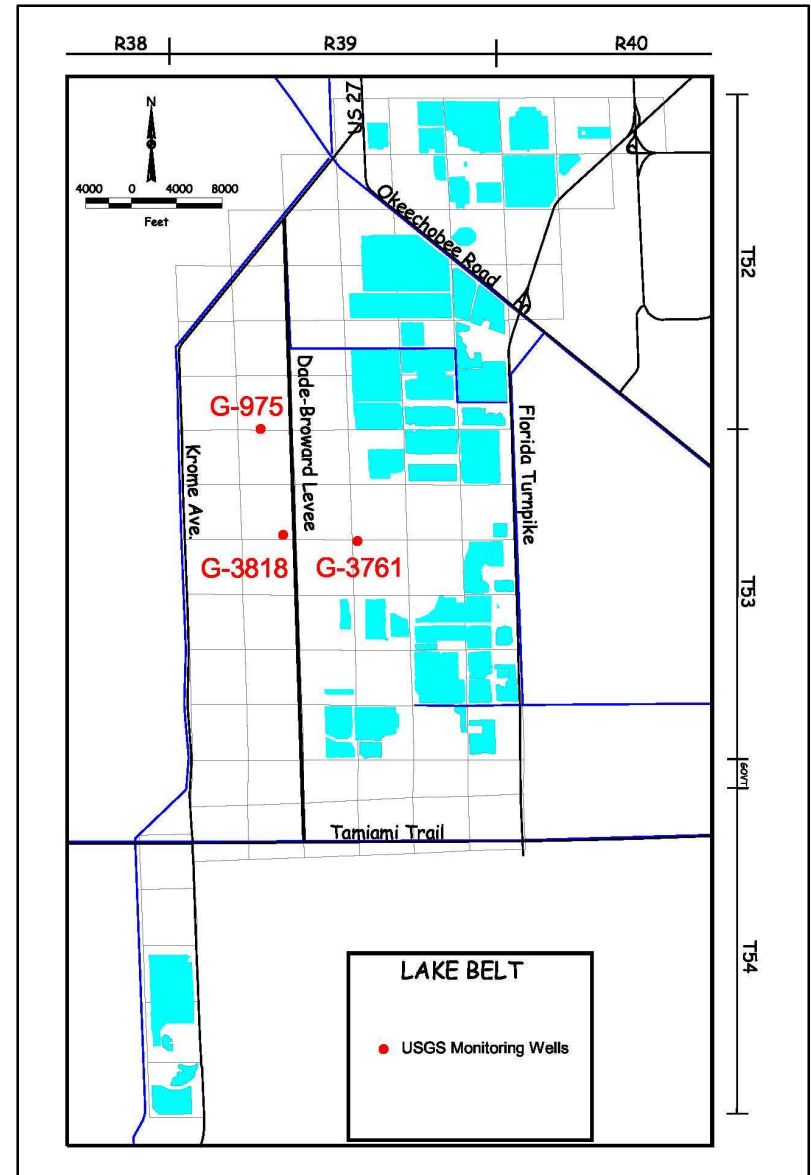
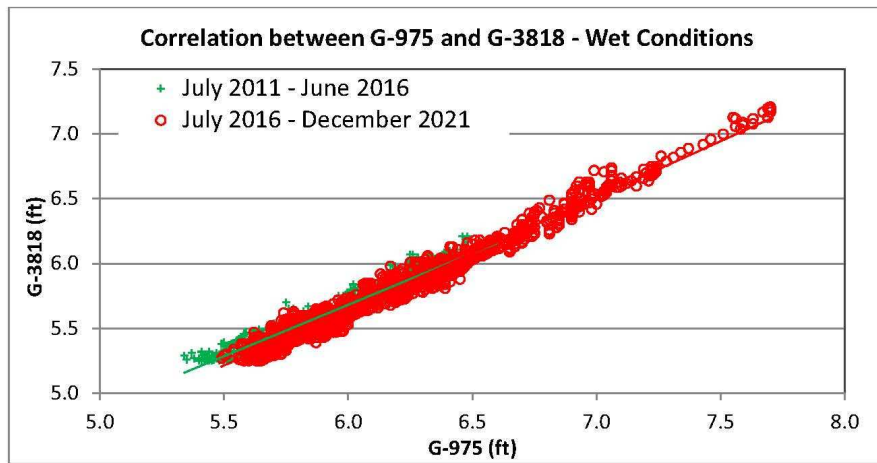
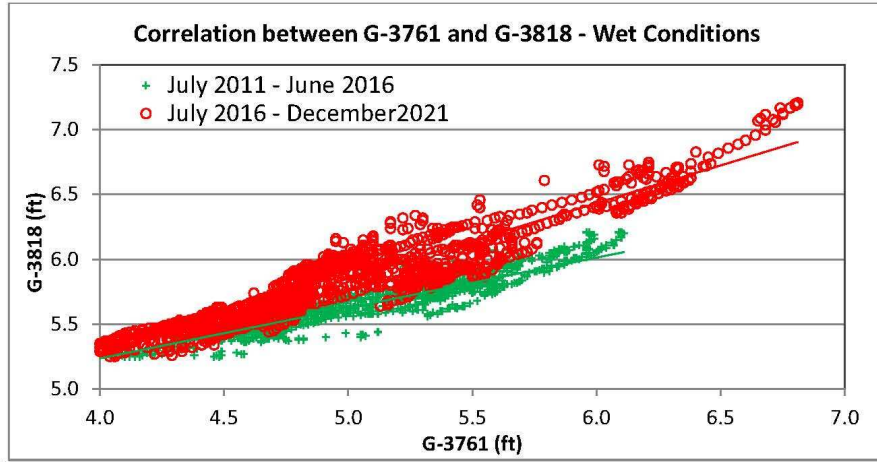
Task 1: 7.5 mile berm repair
completed 2016

Task 2: two proposed water
control structures
completed 2018

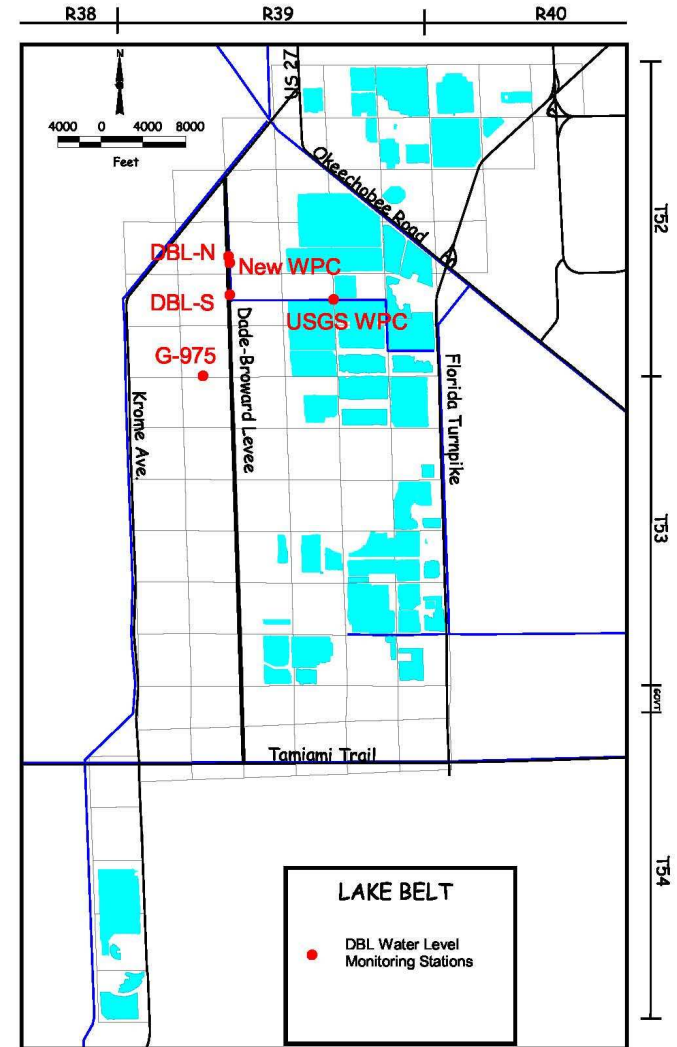
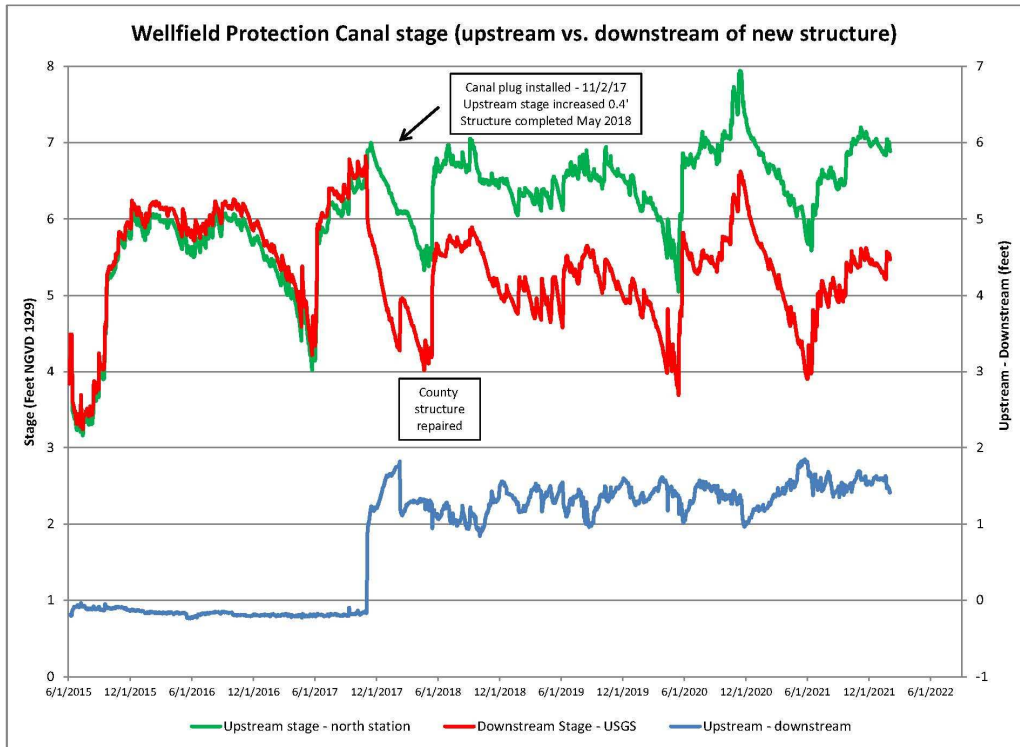


Berm Repair (2016)

Dade-Broward Levee Improvement Project



New West WPC Structure (2018)



Wellfield Protection Canal vs. Pennsuco wetland water levels

