

Application of the Lake Okeechobee Regulation Schedule (LORS2008) on 03/02/2020 (ENSO Neutral Condition)

Lake Okeechobee Net Inflow Outlook:

The Lake Okeechobee Net Inflow Outlook has been computed using 4 methods: Croley's method¹, the SFWMD empirical method², a sub-sampling of Neutral years³ and a sub-sampling of warm years of the Atlantic Multi-decadal Oscillation (AMO) in combination with La Nina ENSO years⁴. The results for Croley's method and the SFWMD empirical method are based on the [CPC Outlook](#).

Table of the Lake Okeechobee Net Inflow Outlooks in feet of equivalent depth. All methods are updated on a weekly basis with observed net inflow for the current month.

Season	Croley's Method ^{1*}		SFWMD Empirical Method ²		Sub-sampling of Neutral ENSO Years ³		Sub-sampling of AMO Warm + Neutral ENSO Years ⁴	
	Value (ft)	Condition	Value (ft)	Condition	Value (ft)	Condition	Value (ft)	Condition
Current (Mar-Aug)	N/A	N/A	1.34	Normal	1.49	Normal	2.17	Very Wet
Multi Seasonal (Mar-Oct)	N/A	N/A	2.78	Wet	2.85	Wet	4.24	Wet

*Croley's Method Not Produced for This Report

See [Seasonal](#) and [Multi-Seasonal](#) tables for the classification of Lake Okeechobee Outlooks.

The recommended methods and values for estimating the Lake Okeechobee Net Inflow Outlook are shaded and should be used in the LORS2008 Release Guidance Flow Charts.

**Sub-sampling is a weighted average of ENSO conditions based on the ENSO forecast used.

[Tributary Hydrologic Conditions Graph:](#)

-939 cfs 14-day running average for Lake Okeechobee Net Inflow through 03/02/2020. According to the classification in [Tributary Hydrologic Conditions](#) table, this condition is Dry.

-1.61 for Palmer Index on 2/29/2020.

According to the classification in [Tributary Hydrologic Conditions](#) table, this condition is Dry.

The wetter of the two conditions above is **Dry**.

[LORS2008 Classification Tables:](#)

Lake Okeechobee Stage on 03/02/2020

Lake Okeechobee Stage: **12.64 feet**

[USACE Report for Lake Okeechobee](#)

[Lake Okeechobee Stage Hydrograph](#)

Lake Okeechobee Management Zone/Band		Bottom Elevation (feet, NGVD)	Current Lake Stage
High Lake Management Band		17.25	
Operational Band	High sub-band	16.66	
	Intermediate sub-band	15.81	
	Low sub-band	13.50	
Base Flow sub-band		12.60	← 12.64
Beneficial Use sub-band		11.88	
Water Shortage Management Band			

Part C of LORS2008: Discharge to WCA's

No releases to WCAs.

Part D of LORS2008: Discharge to Tidewater

Release Guidance Flow Chart Outcome: S-79 Up to 450 cfs & S-80 Up to 200 cfs.

Adaptive Protocol's Release Guidance: Caloosahatchee Estuary

The SFWMD's Lake Okeechobee Adaptive Protocol's Release Guidance suggests no S-77 release to the Caloosahatchee Estuary.

[Back to Lake Okeechobee Operations Main Page](#)

[Back to U.S. Army Corps of Engineers LORSS Homepage](#)

LORS2008 Implementation on 3/2/2020 (ENSO Neutral Condition):

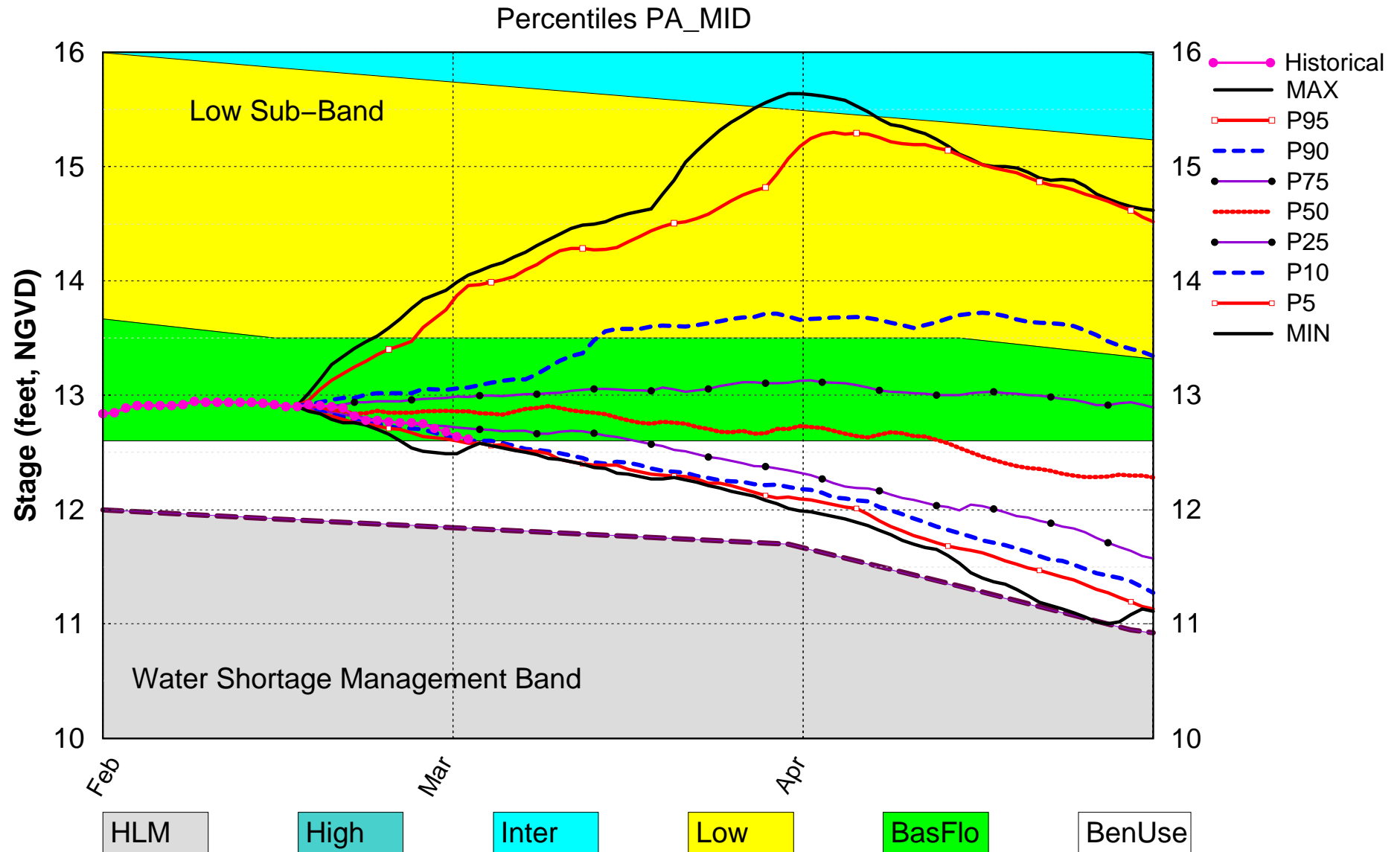
Status for week ending 3/2/2020:

Water Supply Risk Evaluation

Area	Indicator	Value	Color Coded Scoring Scheme
LOK	Projected LOK Stage for the next two months	Beneficial Use subband	H
	Palmer Index for LOK Tributary Conditions	-1.61 (Dry)	M
	CPC Precipitation Outlook	1 month: Below Normal	H
		3 months: Normal	L
	LOK Seasonal Net Inflow Outlook	1.49 ft (Normal to Extremely Wet)	L
	ENSO Forecast (positive)		L
	LOK Multi-Seasonal Net Inflow Outlook	2.85 ft (Normal)	M
	ENSO Forecast (positive)		
WCAs	WCA 1: 3 Station Average (Site 1-7, Site 1-8T & Site 1-9)	Above Line 1 (16.63 ft)	L
	WCA 2A: Site 2-17 HW	Above Line 1 (11.76 ft)	L
	WCA-3A: 3 Station Average (Site 63, 64, and 65)	Above Line 1 (9.20 ft)	L
LEC	Service Area 1	Year-Round Irrigation Rule in effect	L
	Service Area 2	Year-Round Irrigation Rule in effect	L
	Service Area 3	Year-Round Irrigation Rule in effect	L

Note: The water supply risk classification based on the Palmer index, as well as the LOK seasonal and multi-seasonal net inflow outlooks use slightly different classification intervals than those used by the 2008-LORS.

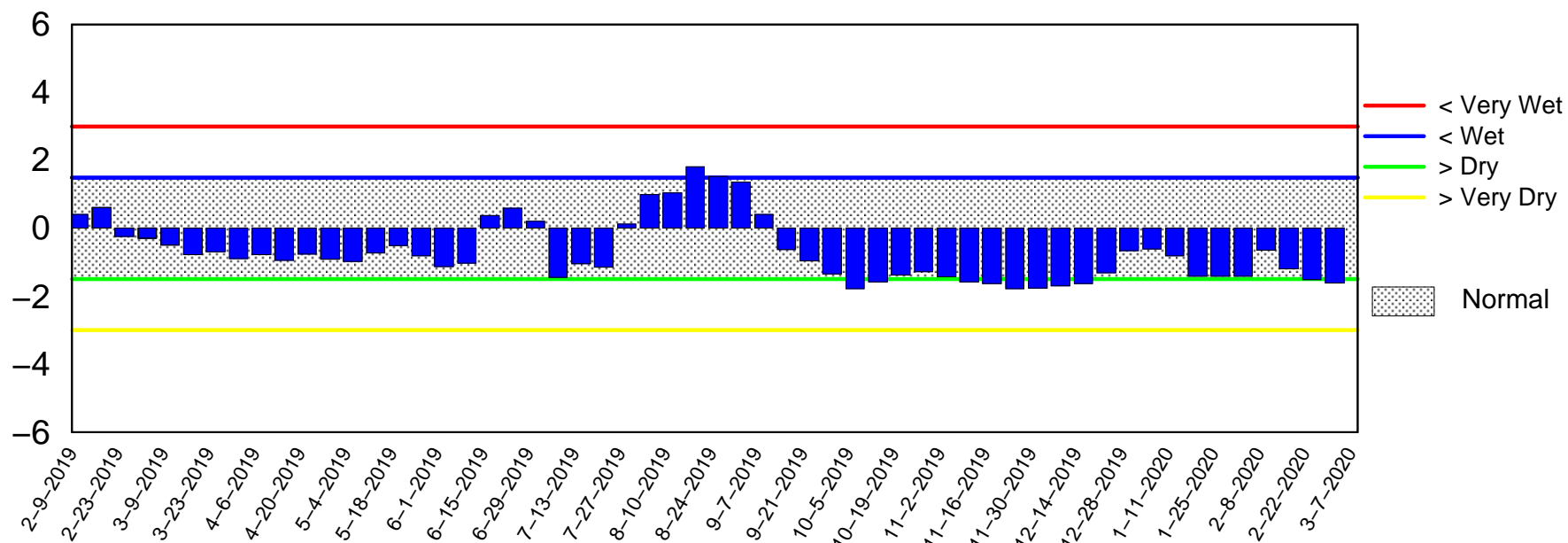
Lake Okeechobee SFWMM Feb 2020 Mid-Month Position Analysis



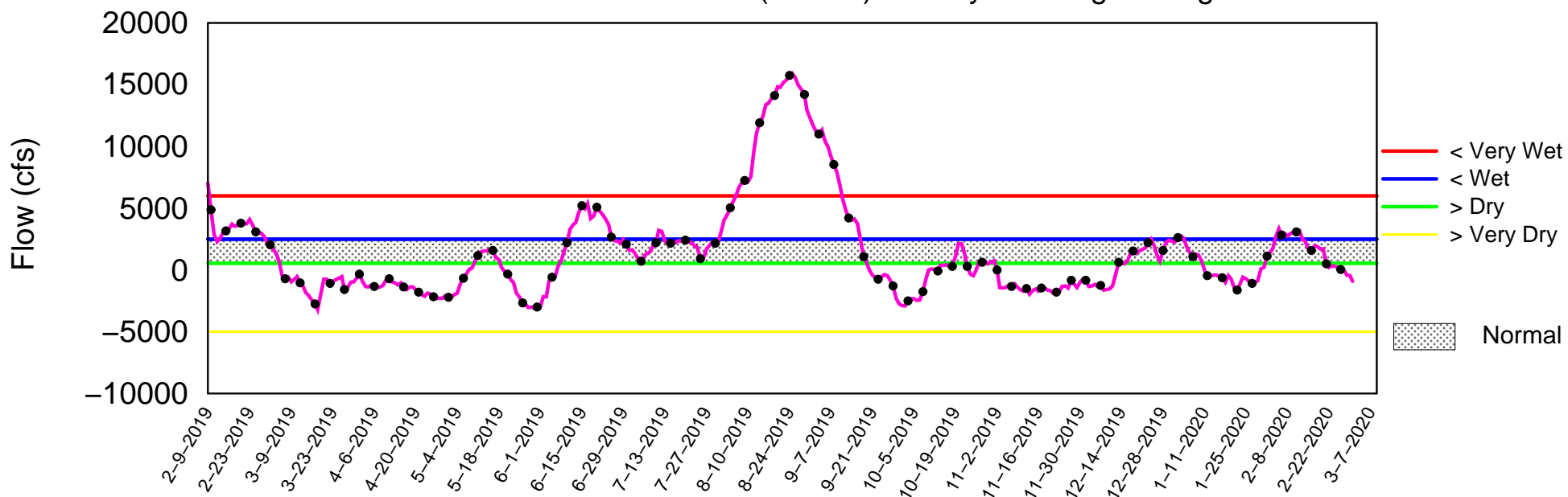
(See assumptions on the Position Analysis Results website)

Tributary Basin Condition Indicators as of March 2 2020

Palmer Index



Lake Okeechobee Net Inflow (LONIN) 14-day Running Average



Mon Mar 02 12:09:10 EST 2020

2008 LORS

Part C: Establish Allowable Lake Okeechobee Releases to the Water Conservation Areas

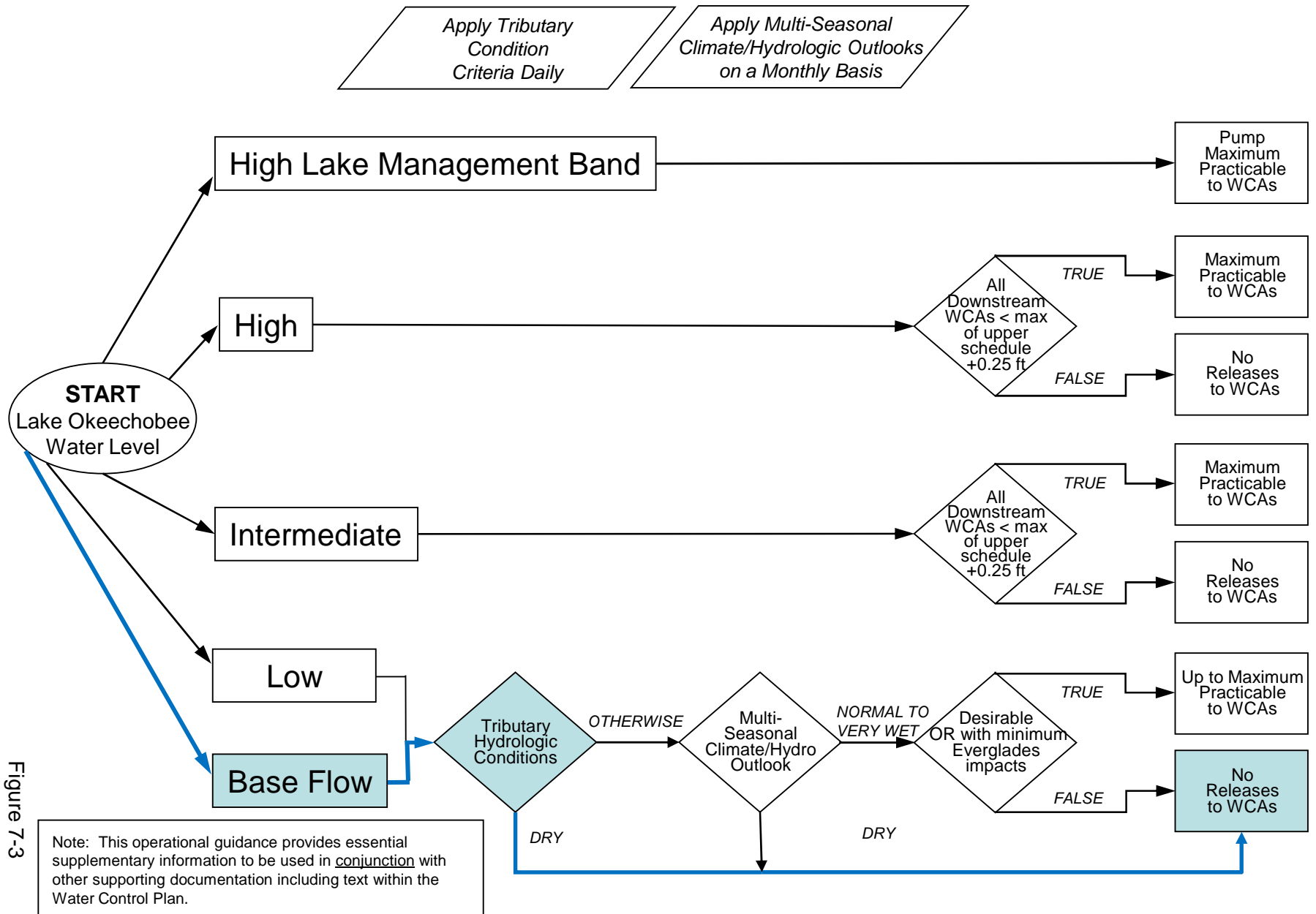
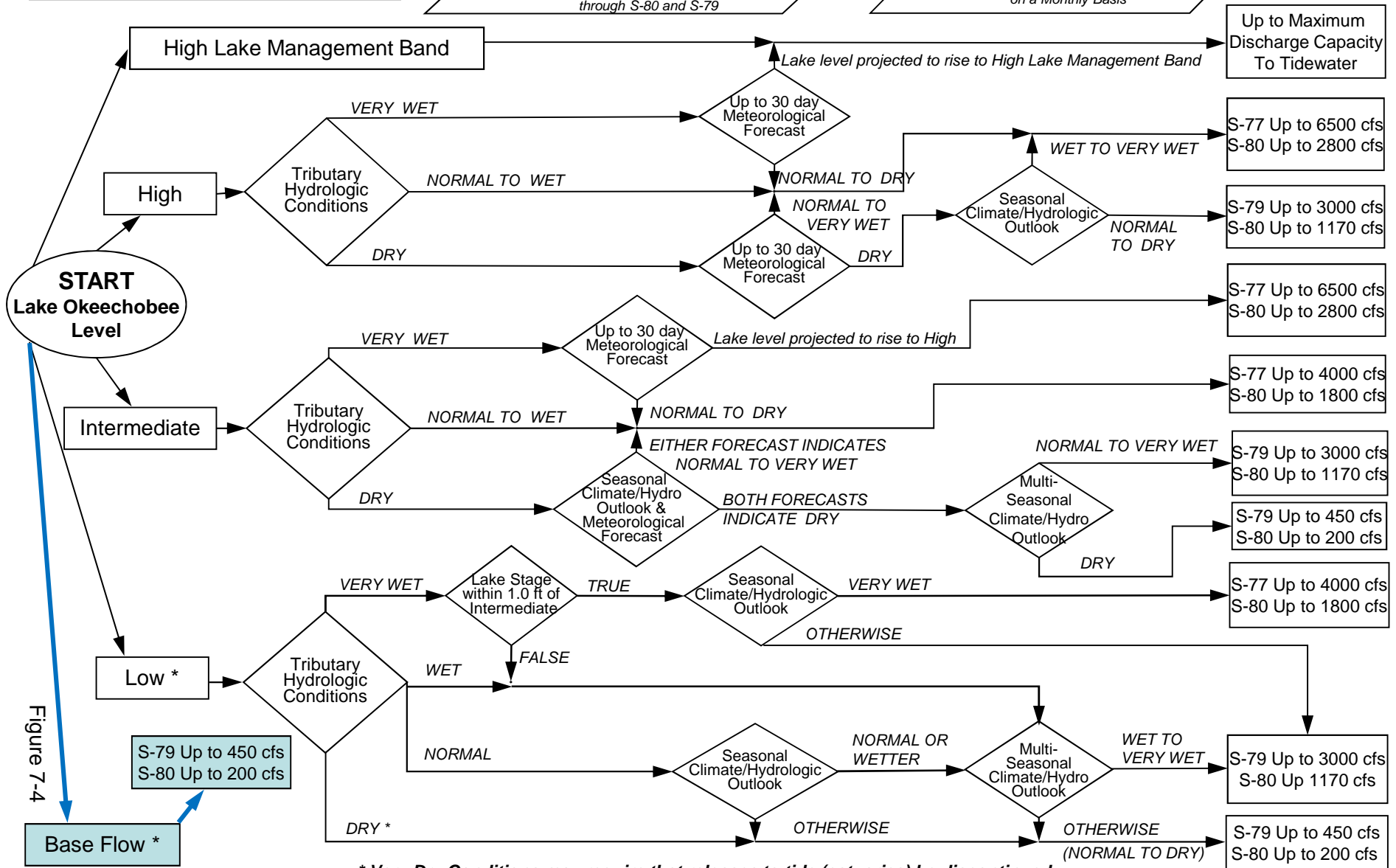


Figure 7-3

Part D: Establish Allowable Lake Okeechobee Releases to Tide (Estuaries)

*When conducting Base Flow releases,
flows can be distributed East and West
up to 650 cfs as needed
to minimize impacts or provide benefits
through S-80 and S-79*

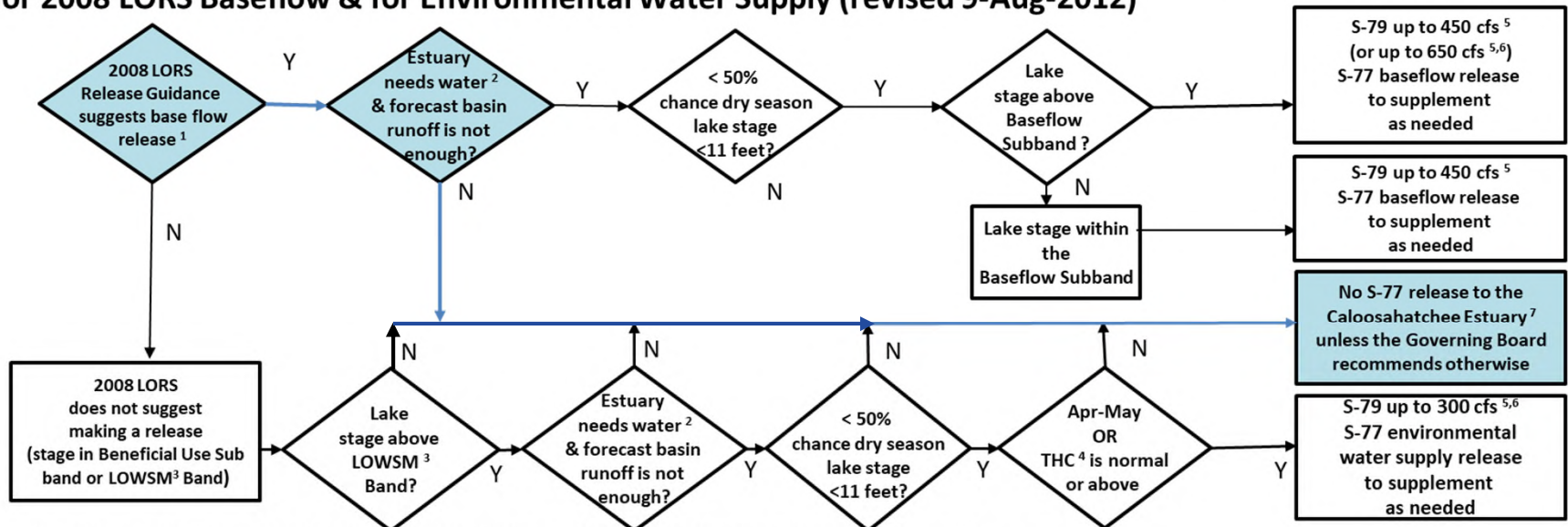
Apply Meteorological Forecasts on a Weekly Basis; apply Seasonal and Multi-Seasonal Climate/Hydrologic Outlooks on a Monthly Basis



*** Very Dry Conditions may require that releases to tide (estuaries) be discontinued**

Figure 7-4

Flowchart to Guide Recommendations for Lake Okeechobee Releases to the Caloosahatchee Estuary for 2008 LORS Baseflow & for Environmental Water Supply (revised 9-Aug-2012)



¹The 2008 LORS Release Guidance (Part D) can suggest baseflow releases in the Intermediate, Low, or Baseflow Subbands.

²Estuary "needs" water when the 30-day moving average salinity at I-75 bridge is projected to exceed 5 practical salinity units (psu) within 2 weeks.

³LOWSM = Lake Okeechobee Water Shortage Management.

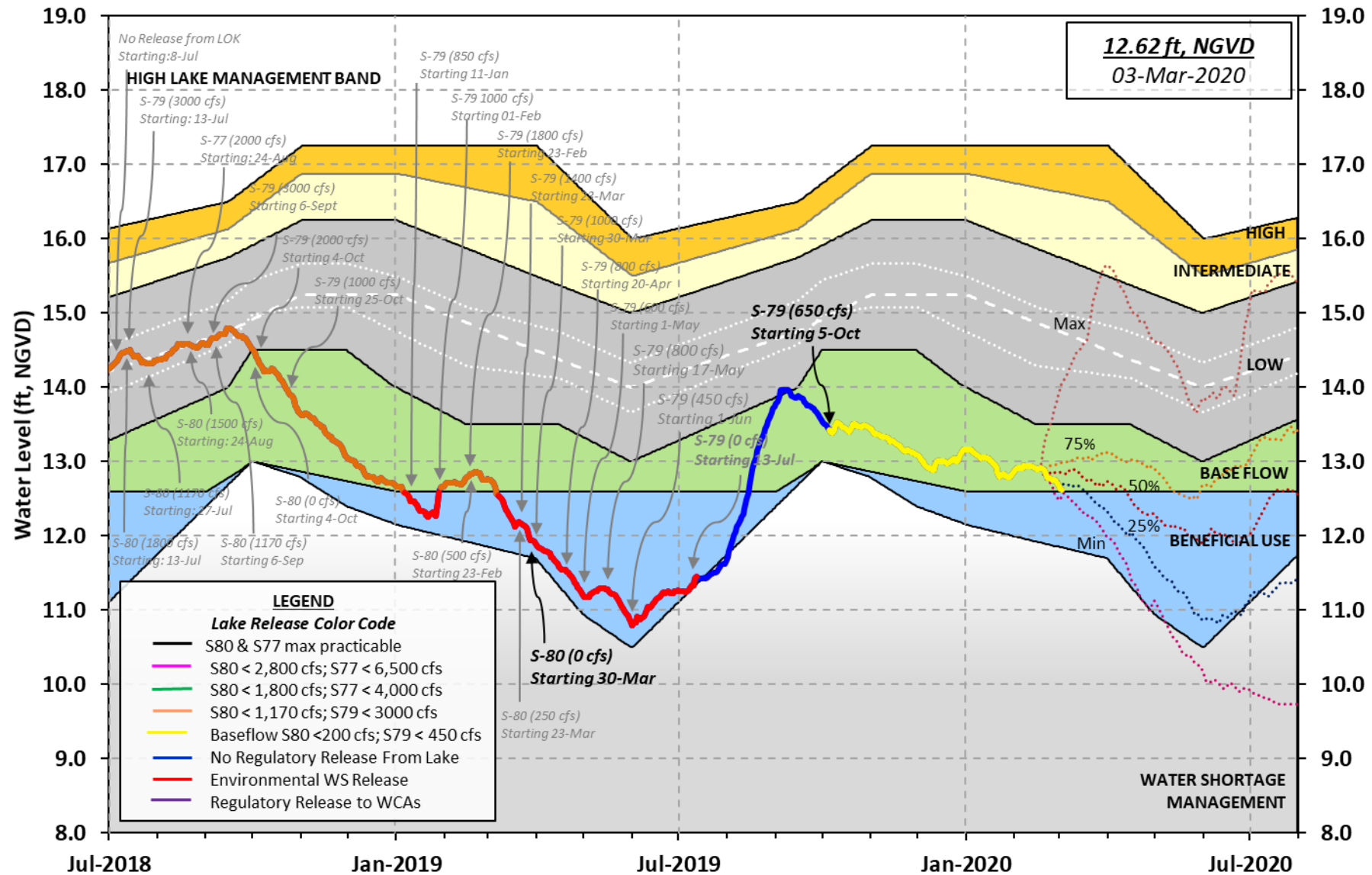
⁴Tributary Hydrologic Condition (THC) is based on classification of Lake Okeechobee Net Inflow and Palmer Index.

⁵Can release less than the "up to" limit if lower release is sufficient to reach or sustain desired estuary salinity; cfs = cubic feet per second.

⁶After reviewing conditions in Water Conservation Areas (WCAs), Stormwater Treatment Areas (STAs), ENP, St. Lucie Estuary and Lake Okeechobee.

⁷Should this condition be reached, the Governing Board will be briefed at their next regularly scheduled meeting as part of the State of the Water Resources agenda item.

Lake Okeechobee Water Level History and Projected Stages



U. S. Army Corps of Engineers, Jacksonville District
 Lake Okeechobee and Vicinity Report
 ** Preliminary Data - Subject to Revision **

Data Ending 2400 hours 01 MAR 2020

Okeechobee Lake Regulation	Elevation (ft-NGVD)	Last Year (ft-NGVD)	2YRS Ago (ft-NGVD)
*Okeechobee Lake Elevation	12.64	12.76	14.84 (Official Elv)
Bottom of High Lake Mngmt= 17.25 Top of Water Short Mngmt= 11.85			
Currently in Operational Management Band			

Simulated Average LORS2008 [1965-2000]	13.30
Difference from Average LORS2008	-0.66

01MAR (1965-2007) Period of Record Average	14.52
Difference from POR Average	-1.88

Today Lake Okeechobee elevation is determined from the 4 Int & 4 Edge stations

++Navigation Depth (Based on 2007 Channel Condition Survey) Route 1 ÷ 6.58'
 ++Navigation Depth (Based on 2008 Channel Condition Survey) Route 2 ÷ 4.78'
 Bridge Clearance = 50.94'

4 Interior and 4 Edge Okeechobee Lake Average (Avg-Daily values):

L001	L005	L006	LZ40	S4	S352	S308	S133
12.53	12.64	12.68	12.65	12.77	12.78	12.59	12.45

*Combination Okeechobee Avg-Daily Lake Average = 12.64
 (*See Note)

Okeechobee Inflows (cfs):

S65E	646	S65EX1	214	Fisheating Cr	28
S154	0	S191	0	S135 Pumps	0
S84	0	S133 Pumps	0	S2 Pumps	0
S84X	0	S127 Pumps	0	S3 Pumps	0
S71	0	S129 Pumps	0	S4 Pumps	0
S72	0	S131 Pumps	0	C5	0
Total Inflows:	888				

Okeechobee Outflows (cfs):

S135 Culverts	0	S354	1030	S77	786
S127 Culverts	0	S351	1340	S308	70
S129 Culverts	0	S352	40		
S131 Culverts	0	L8 Canal Pt	124		
Total Outflows:	3389				

****S77 structure flow is being used to compute Total Outflow.
 ****S308 below flow meter is being used to compute Total Outflow.

Okeechobee Pan Evaporation (inches):

S77	0.13	S308	0.18
Average Pan Evap x 0.75 Pan Coefficient = 0.12" = 0.01'			

Lake Average Precipitation using NEXRAD: = 0.00" = 0.00'

Evaporation - Precipitation: = 0.12" = 0.01'
 Evaporation - Precipitation using Lake Area of 730 square miles
 is equal to 2282 cfs out of the lake.
 Lake Okeechobee (Change in Storage) Flow is -7663 cfs or -15200 AC-FT

Headwater Tailwater			----- Gate Positions -----							
Elevation	Elevation	Disch	#1	#2	#3	#4	#5	#6	#7	#8
(ft-msl)	(ft-msl)	(cfs)	(ft)	(ft)	(ft)	(ft)	(ft)	(ft)	(ft)	(ft)
(I) see note at bottom										
North East Shore										
S133 Pumps:	13.09	12.56	0	0	0	0	0	0	(cfs)	
S193:										
S191:	19.34	12.56	0	0.0	0.0	-NR-				
S135 Pumps:	12.97	12.46	0	0	0	0	0		(cfs)	
S135 Culverts:			0	0.0	0.0					
North West Shore										
S65E:	21.09	12.32	646	0.0	0.0	0.5	0.5	0.0	0.5	
S65EX1:	21.09	12.32	214							
S127 Pumps:	13.37	12.57	0	0	0	0	0	0	(cfs)	
S127 Culvert:			0	0.0						
S129 Pumps:	12.90	12.72	0	0	0	0			(cfs)	
S129 Culvert:			0	0.0						
S131 Pumps:	12.98	12.69	0	0	0				(cfs)	
S131 Culvert:			0							
Fisheating Creek										
nr Palmdale		29.12	28							
nr Lakeport										
C5:		-NR-	0	-NR-	-NR-	-NR-				
South Shore										
S4 Pumps:	12.19	12.69	0	0	0	0			(cfs)	
S169:	12.74	12.19	104	0.0	0.0	0.0				
S310:	12.57		99							
S3 Pumps:	11.17	12.67	0	0	0	0			(cfs)	
S354:	12.67	11.17	1030	3.0	3.0					
S2 Pumps:	11.19	-NR-	0	0	0	0	0		(cfs)	
S351:	-NR-	11.19	1340	2.7	2.7	2.5				
S352:	12.69	10.69	40	0.0	0.0					
C10A:	-NR-	12.75		8.0	8.0	8.0	0.0	0.0		
L8 Canal PT		12.59	124							

S351 and S352 Temporary Pumps/S354 Spillway

S351:	11.19	-NR-	1340	-NR--NR--NR--NR--NR--NR-
S352:	10.69	12.69	40	-NR--NR--NR--NR-
S354:	11.17	12.67	1030	-NR--NR--NR--NR-

Caloosahatchee River (S77, S78, S79)

S47B:	12.54	10.98		0.0	0.0
S47D:	10.94	10.93	13	6.5	

S77:
 Spillway and Sector Preferred Flow:
 12.49 10.84 782 0.0 2.5 2.5 0.0
 Flow Due to Lockages+: 4

S78:
 Spillway and Sector Flow:
 10.85 3.01 693 2.0 0.0 0.0 1.0
 Flow Due to Lockages+: 16

S79:
 Spillway and Sector Flow:
 3.10 0.82 876 0.5 1.0 1.0 0.0 0.0 0.0 0.0 0.0
 Flow Due to Lockages+: 15
 Percent of flow from S77 89%
 Chloride (ppm) 0

St. Lucie Canal (S308, S80)

S308:
 Spillway and Sector Preferred Flow:
 12.58 12.56 70 3.0 3.0 3.0 3.0
 Flow Due to Lockages+: 0

S153: 19.03 12.33 0 0.0 0.0

S80:
 Spillway and Sector Flow:
 12.62 0.34 0 0.0 0.0 0.0 0.0 0.0 0.0 0.0
 Flow Due to Lockages+: 26
 Percent of flow from S308 NA %

Steele Point Top Salinity (mg/ml) ****
 Steele Point Bottom Salinity (mg/ml) ****

Speedy Point Top Salinity (mg/ml) ****
 Speedy Point Bottom Salinity (mg/ml) ****

+ Flow Due to lockages is computed utilizing average daily headwater and
 tailwater along with total number of lockages for the day to calculate
 a volume which is then converted to an average discharge in cfs.
 ++ Preferred flow is determined from either the spillway discharge or the below flow meter daily

	1-Day	3-Day	7-Day	----- Wind -----	
Daily Precipitation Totals	(inches)	(inches)	(inches)	Direction (DegØ)	Speed (mph)
S133 Pump Station:	-NR-	0.00	0.00		
S193:	-NR-	0.00	0.00	-NR-	-NR-
Okeechobee Field Station:	-NR-	0.00	0.00		
S135 Pump Station:	-NR-	0.00	0.00		
S127 Pump Station:	-NR-	0.00	0.00		
S129 Pump Station:	-NR-	0.00	0.00		
S131 Pump Station:	-NR-	0.00	0.00		
S77:	14.31	14.31	14.77	79	2
S78:	6.76	6.76	6.85	105	2
S79:	1.07	1.07	1.36	128	3
S4 Pump Station:	-NR-	0.00	0.00		
Clewiston Field Station:	-NR-	0.00	0.00		
S3 Pump Station:	-NR-	0.00	0.00		
S2 Pump Station:	-NR-	0.00	0.00		
S308:	38.68	38.68	39.03	69	4
S80:	0.10	0.10	0.20	4	1
Okeechobee Average	26.50	4.08	4.14		

(Sites S78, S79 and S80 not included)

Oke Nexrad Basin Avg 0.00 0.00 0.36

Okeechobee Lake Elevations	01 MAR 2020	12.64	Difference from 01MAR20
01MAR20 -1 Day =	29 FEB 2020	12.68	0.04
01MAR20 -2 Days =	28 FEB 2020	12.71	0.07
01MAR20 -3 Days =	27 FEB 2020	12.75	0.11
01MAR20 -4 Days =	26 FEB 2020	12.76	0.12
01MAR20 -5 Days =	25 FEB 2020	12.76	0.12
01MAR20 -6 Days =	24 FEB 2020	12.77	0.13
01MAR20 -7 Days =	23 FEB 2020	12.78	0.14
01MAR20 -30 Days =	31 JAN 2020	12.85	0.21
01MAR20 -1 Year =	01 MAR 2019	12.76	0.12
01MAR20 -2 Year =	01 MAR 2018	14.84	2.20

Long Term Mean 30day Avearge ET for Lake Alfred (Inches) = -NR-

Lake Okeechobee Net Inflow (LONIN)				
Average Flow over the previous 14 days				Avg-Daily Flow
01MAR20	Today =	01 MAR 2020	-950 MON	-4278
01MAR20	-1 Day =	29 FEB 2020	-504 SUN	-2070
01MAR20	-2 Days =	28 FEB 2020	-443 SAT	-4648
01MAR20	-3 Days =	27 FEB 2020	-39 FRI	395
01MAR20	-4 Days =	26 FEB 2020	3 THU	657
01MAR20	-5 Days =	25 FEB 2020	173 WED	-81
01MAR20	-6 Days =	24 FEB 2020	302 TUE	1804
01MAR20	-7 Days =	23 FEB 2020	315 MON	3257
01MAR20	-8 Days =	22 FEB 2020	245 SUN	-5238
01MAR20	-9 Days =	21 FEB 2020	580 SAT	-10754
01MAR20	-10 Days =	20 FEB 2020	1785 FRI	129
01MAR20	-11 Days =	19 FEB 2020	1985 THU	475
01MAR20	-12 Days =	18 FEB 2020	2063 WED	421
01MAR20	-13 Days =	17 FEB 2020	2144 TUE	6631

S65E				
Average Flow over previous 14 days				Avg-Daily Flow
01MAR20	Today=	01 MAR 2020	801 MON	745
01MAR20	-1 Day =	29 FEB 2020	826 SUN	740
01MAR20	-2 Days =	28 FEB 2020	839 SAT	950
01MAR20	-3 Days =	27 FEB 2020	830 FRI	752
01MAR20	-4 Days =	26 FEB 2020	826 THU	793
01MAR20	-5 Days =	25 FEB 2020	816 WED	762
01MAR20	-6 Days =	24 FEB 2020	811 TUE	-NR-
01MAR20	-7 Days =	23 FEB 2020	818 MON	624
01MAR20	-8 Days =	22 FEB 2020	828 SUN	685
01MAR20	-9 Days =	21 FEB 2020	836 SAT	683
01MAR20	-10 Days =	20 FEB 2020	839 FRI	856
01MAR20	-11 Days =	19 FEB 2020	827 THU	908
01MAR20	-12 Days =	18 FEB 2020	786 WED	958
01MAR20	-13 Days =	17 FEB 2020	735 TUE	954

S65EX1				
Average Flow over previous 14 days				Avg-Daily Flow
01MAR20	Today=	01 MAR 2020	210 MON	214
01MAR20	-1 Day =	29 FEB 2020	197 SUN	213
01MAR20	-2 Days =	28 FEB 2020	182 SAT	214

01MAR20	-3 Days =	27 FEB 2020	174	FRI		213
01MAR20	-4 Days =	26 FEB 2020	168	THU		210
01MAR20	-5 Days =	25 FEB 2020	177	WED		209
01MAR20	-6 Days =	24 FEB 2020	183	TUE		436
01MAR20	-7 Days =	23 FEB 2020	161	MON		307
01MAR20	-8 Days =	22 FEB 2020	154	SUN		345
01MAR20	-9 Days =	21 FEB 2020	139	SAT		359
01MAR20	-10 Days =	20 FEB 2020	143	FRI		0
01MAR20	-11 Days =	19 FEB 2020	156	THU		112
01MAR20	-12 Days =	18 FEB 2020	182	WED		111
01MAR20	-13 Days =	17 FEB 2020	212	TUE		0

Lake Okeechobee Outlets Last 14 Days

DATE	S-77 Discharge (ALL DAY) (AC-FT)	Below S-77 Discharge (ALL-DAY) (AC-FT)	S-78 Discharge (ALL DAY) (AC-FT)	S-79 Discharge (ALL DAY) (AC-FT)
01 MAR 2020	1563	1504	1436	1761
29 FEB 2020	1445	1355	781	1488
28 FEB 2020	758	576	790	394
27 FEB 2020	144	101	402	714
26 FEB 2020	546	896	614	910
25 FEB 2020	1378	1463	792	1076
24 FEB 2020	1588	1607	1316	1539
23 FEB 2020	1639	1603	1324	2401
22 FEB 2020	1285	1104	1013	1734
21 FEB 2020	159	113	318	634
20 FEB 2020	151	551	330	560
19 FEB 2020	116	367	414	1086
18 FEB 2020	471	737	629	2046
17 FEB 2020	1004	1355	1325	1779

DATE	S-310 Discharge (ALL DAY) (AC-FT)	S-351 Discharge (ALL DAY) (AC-FT)	S-352 Discharge (ALL DAY) (AC-FT)	S-354 Discharge (ALL DAY) (AC-FT)	L8 Canal Pt Discharge (ALL DAY) (AC-FT)
01 MAR 2020	197	2657	79	1753	246
29 FEB 2020	218	2929	582	1787	270
28 FEB 2020	148	3013	420	1721	254
27 FEB 2020	56	2387	0	1329	279
26 FEB 2020	10	0	0	0	216
25 FEB 2020	107	954	0	720	193
24 FEB 2020	157	2047	0	-NR-	183
23 FEB 2020	102	2078	0	1053	173
22 FEB 2020	18	1591	0	1073	163
21 FEB 2020	78	2063	0	1245	154
20 FEB 2020	-26	1994	0	1289	144
19 FEB 2020	79	2389	0	1465	134
18 FEB 2020	69	1777	0	1329	149
17 FEB 2020	6	2186	0	1045	203

DATE	S-308 Discharge (ALL DAY) (AC-FT)	Below S-308 Discharge (ALL-DAY) (AC-FT)	S-80 Discharge (ALL-DAY) (AC-FT)
01 MAR 2020	1381	138	52
29 FEB 2020	1047	96	35
28 FEB 2020	1222	28	31
27 FEB 2020	600	280	31
26 FEB 2020	557	23	28
25 FEB 2020	876	21	48

24 FEB 2020	1141	-13	26
23 FEB 2020	925	204	16
22 FEB 2020	1144	155	15
21 FEB 2020	1038	-339	20
20 FEB 2020	376	16	32
19 FEB 2020	540	-10	42
18 FEB 2020	929	-84	48
17 FEB 2020	567	-116	24

*** NOTE: Discharge (ALL DAY) is computed using Spillway, Sector Gate and Lockages Discharges from 0015 hrs to 2400 hrs.

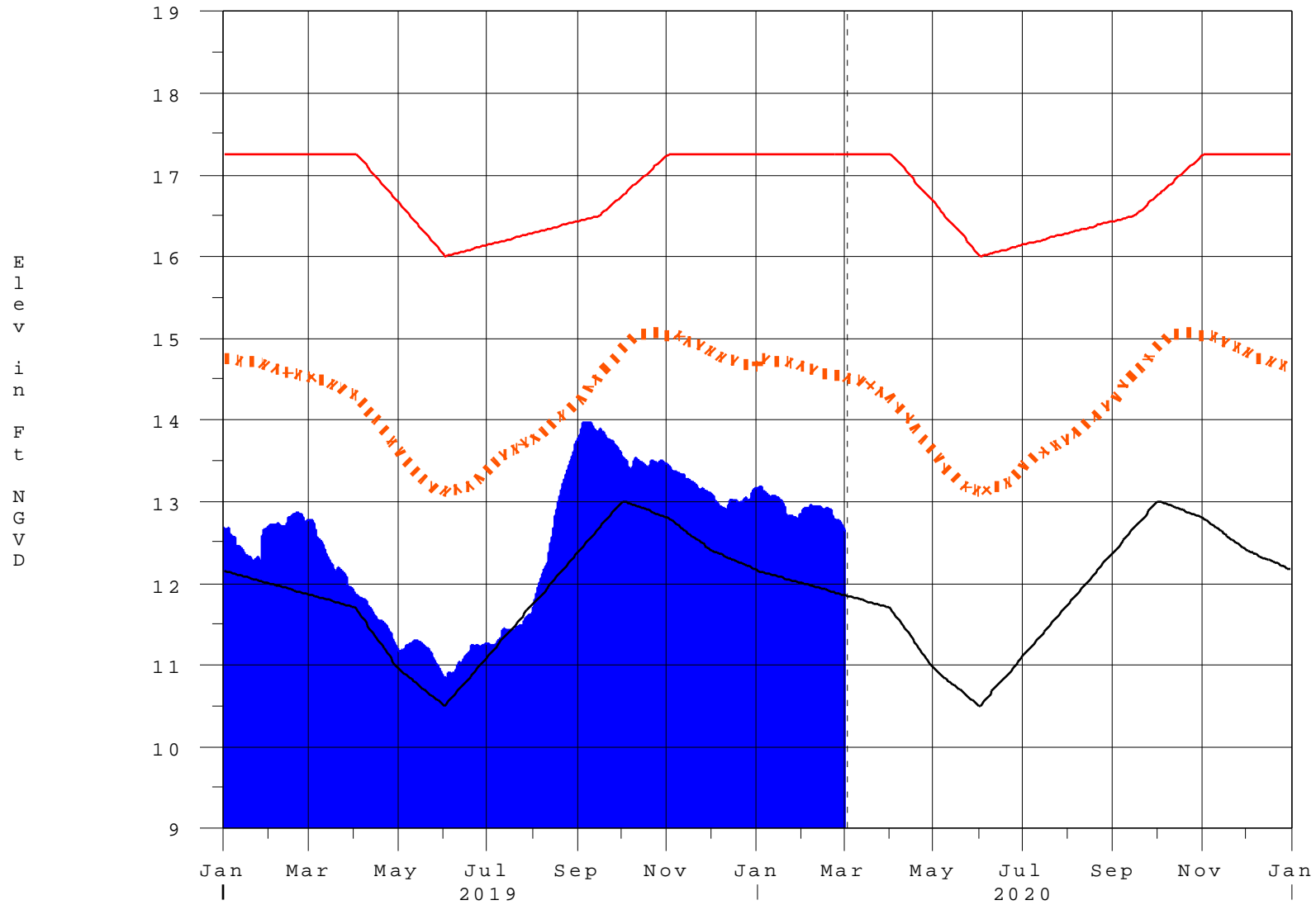
(I) - Flows preceded by "I" signify an instantaneous flow computed from the single value reported for the day

* On 11 May 1999, Lake Okeechobee Elevation was switched from Instantaneous 2400 value to an average-daily lake average.
 On 14 Mar 2001, due to the isolation of various gages within the standard 10 stations, the average of the interior 4 station gages was used as the Lake Okeechobee Elevation.
 On 05 November 2010, Lake Okeechobee Elevation was switched to a 9 gage mix of interior and edge gages to obtain a more reliable representation of the lake level.
 On 09 May 2011, Lake Okeechobee Elevation was switched to a 8 gage mix of interior and edge gages to obtain a more reliable representation of the lake level due to isolation of S135 from low lake levels.
 Today Lake Okechobee elevation is determined from the 4 Int & 4 Edge stations
 ++ For more information see the Jacksonville District Navigation website at <http://www.saj.usace.army.mil/>
 \$ For information regarding Lake Okeechobee Service Area water restrictions please refer to www.sfwmd.gov

Report Generated 02MAR2020 @ 23:39 ** Preliminary Data - Subject to Revision **

Lake Okeechobee

02MAR20 11:45:22



- High Lake Management
- Okeechobee Avg Elev
- Average Elev [1965-2007]
- Water Shortage Management

Classification Tables

Supplemental Tables used in conjunction with the LORS2008 Release

Guidance Flow Charts

- [Class Limits for Tributary Hydrologic Conditions](#)

Table K-2 in the Lake Okeechobee Water Control Plan

- [6-15 Day Precipitation Outlook Categories](#)

Table ?? in the Lake Okeechobee Water Control Plan

- [Classification of Lake Okeechobee Net Inflow for Seasonal Outlook](#)

Table K-3 in the Lake Okeechobee Water Control Plan

- [Classification of Lake Okeechobee Net Inflow for Multi-Seasonal Outlook](#)

Table K-4 in the Lake Okeechobee Water Control Plan

[Back to Lake Okeechobee Operations Main Page](#)

[Back to U.S. Army Corps of Engineers Lake Okeechobee Operations Homepage](#)

Tributary Hydrologic Classification*	Palmer Index Class Limits	2-wk Mean L.O. Net Inflow Class Limits
Very Wet	3.0 or greater	Greater \geq 6000 cfs
Wet	1.5 to 2.99	2500 - 5999 cfs
Near Normal	-1.49 to 1.49	500 - 2499 cfs
Dry	-2.99 to -1.5	-5000 – 500 cfs
Very Dry	-3.0 or less	Less than -5000 cfs

* use the wettest of the two indicators

Classification of Lake Okeechobee Net Inflow Seasonal Outlook*

Lake Net Inflow Prediction [million acre-feet]	Equivalent Depth** [feet]	Lake Okeechobee Net Inflow Seasonal Outlook
> 0.93	> 2.0	Very Wet
0.71 to 0.93	1.51 to 2.0	Wet
0.35 to 0.70	0.75 to 1.5	Normal
< 0.35	< 0.75	Dry

****Volume-depth conversion based on average lake surface area of 467,000 acres**

Classification of Lake Okeechobee Net Inflow Multi-Seasonal Outlook*

Lake Net Inflow Prediction [million acre-feet]	Equivalent Depth** [feet]	Lake Okeechobee Net Inflow Multi-Seasonal Outlook
> 2.0	> 4.3	Very Wet
1.18 to 2.0	2.51 to 4.3	Wet
0.5 to 1.17	1.1 to 2.5	Normal
< 0.5	< 1.1	Dry

****Volume-depth conversion based on average lake surface area of 467,000 acres**

6-15 Day Precipitation Outlook Categories*

6-15 Day Precipitation Outlook Categories	WSE Decision Tree Categories
Above Normal	Wet to Very Wet
Normal	Normal
Below Normal	Dry

*** Corresponds to Table 7-6 in the Lake Okeechobee Water Control Plan**

Under Construction