

Application of the Lake Okeechobee Regulation Schedule (LORS2008) on 7/17/2017 (ENSO Neutral Condition)

Lake Okeechobee Net Inflow Outlook:

The Lake Okeechobee Net Inflow Outlook has been computed using 4 methods: Croley's method¹, the SFWMD empirical method², a sub-sampling of Neutral years³ and a sub-sampling of warm years of the Atlantic Multi-decadal Oscillation (AMO) in combination with Neutral ENSO years⁴. The results for Croley's method and the SFWMD empirical method are based on the [CPC Outlook](#).

Table of the Lake Okeechobee Net Inflow Outlooks in feet of equivalent depth. All methods are updated on a weekly basis with observed net inflow for the current month.

Season	Croley's Method ^{1*}		SFWMD Empirical Method ²		Sub-sampling of Neutral ENSO Years ³		Sub-sampling of AMO Warm + Neutral ENSO Years ⁴	
	Value (ft)	Condition	Value (ft)	Condition	Value (ft)	Condition	Value (ft)	Condition
Current (Jul-Dec)	N/A	N/A	2.26	Very Wet	2.55	Very Wet	3.70	Very Wet
Multi Seasonal (Jul-Apr)	N/A	N/A	2.54	Wet	4.03	Wet	3.88	Wet

*Croley's Method Not Produced For This Report

See [Seasonal](#) and [Multi-Seasonal](#) tables for the classification of Lake Okeechobee Outlooks.

The recommended methods and values for estimating the Lake Okeechobee Net Inflow Outlook are shaded and should be used in the LORS2008 Release Guidance Flow Charts.

[Tributary Hydrologic Conditions Graph:](#)

1392 cfs 14-day running average for Lake Okeechobee Net Inflow through 7/16/2017. According to the classification in [Tributary Hydrologic Conditions](#) table, this condition is Normal.

-2.54 for Palmer Index on 7/15/2017.

According to the classification in [Tributary Hydrologic Conditions](#) table, this condition is Dry.

The wetter of the two conditions above is **Normal**.

[LORS2008 Classification Tables:](#)

Lake Okeechobee Stage on 7/17/2017

Lake Okeechobee Stage: **12.56 feet**

[USACE Report for Lake Okeechobee](#)

[Lake Okeechobee Stage Hydrograph](#)

Lake Okeechobee Management Zone/Band		Bottom Elevation (feet, NGVD)	Current Lake Stage
High Lake Management Band		16.21	
Operational Band	High sub-band	15.77	
	Intermediate sub-band	15.32	
	Low sub-band	13.43	
Base Flow sub-band		12.60	
Beneficial Use sub-band		11.44	← 12.56
Water Shortage Management Band			

[Part C of LORS2008: Discharge to WCA's](#)

Release Guidance Flow Chart Outcome: No releases to the WCAs.

[Part D of LORS2008: Discharge to Tidewater](#)

Release Guidance Flow Chart Outcome: No releases to the Estuaries.

Technical Input Summaries from:

- [Lake Okeechobee Division](#)
- [Coastal Ecosystems](#)
- [Everglades Ecosystems Division](#)
- [Water Supply Department](#)
- [Water Resource Management Release Recommendation](#)
- [Kissimmee Watershed Environmental Conditions](#)
- [Operations Department](#)

[Back to Lake Okeechobee Operations Main Page](#)

[Back to U.S. Army Corps of Engineers LORSS Homepage](#)

LORS2008 Implementation on 7/17/2017 (ENSO Neutral Condition):

Status for week ending 7/17/2017:

District wide, Raindar rainfall was 2.30 inches for the week. Lake stage on 7/17/2017 was 12.56 ft, up 0.12 ft from last week.

The updated July 2017 SFWMM Dynamic Position Analysis [percentile graph](#) for Lake Okeechobee show that the current lake stage is in the Beneficial Use Operational Sub-Band.

The LORS2008 tributary [indices](#) are classified as **Normal**. The PDSI indicates dry condition and the LONIN is Normal. The classification is based on the wetter of the two.

Water Supply Risk Evaluation

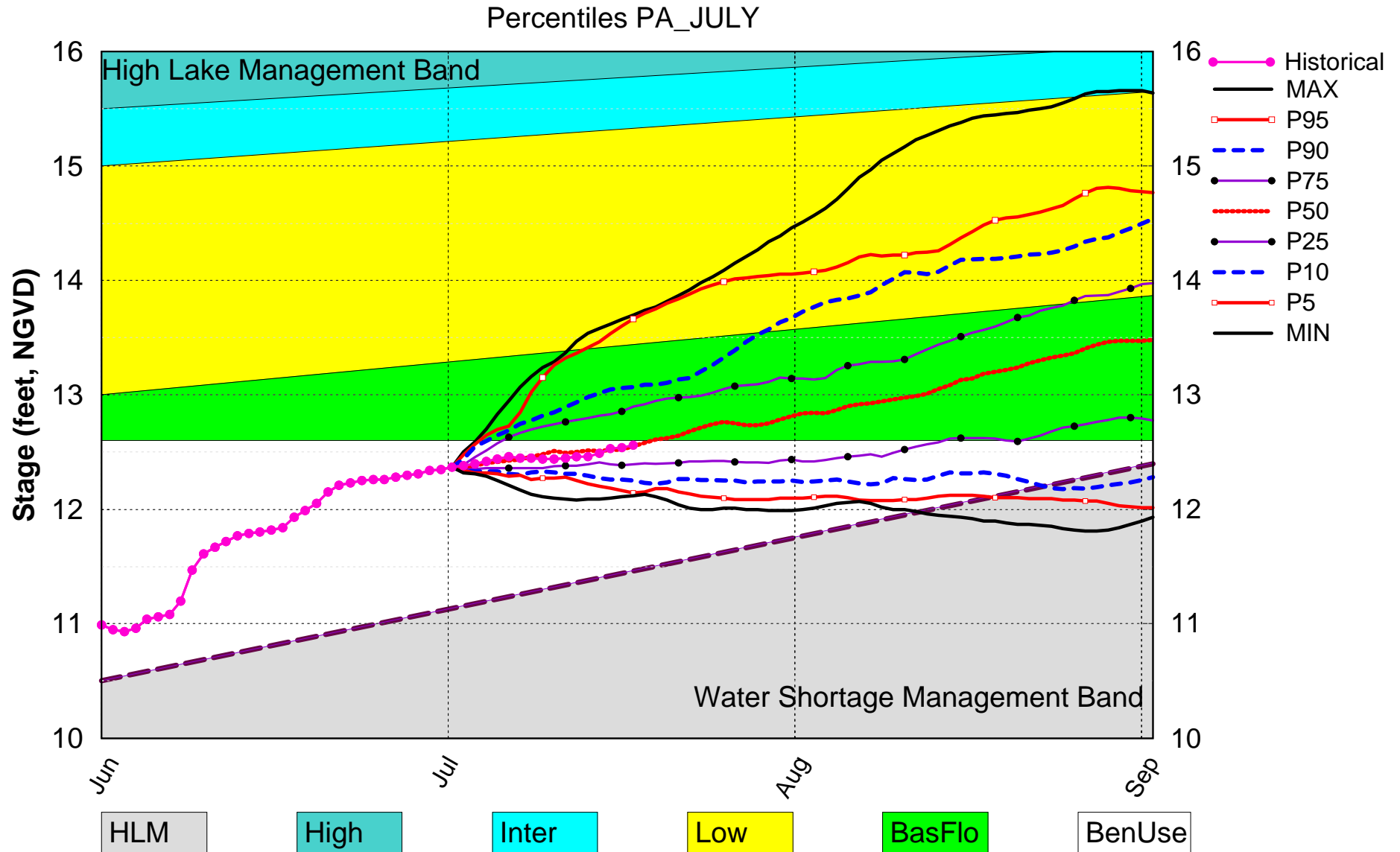
Area	Indicator	Value	Color Coded Scoring Scheme
LOK	Projected LOK Stage for the next two months	Base Flow Sub Band	M
	Palmer Index for LOK Tributary Conditions	-2.54 (Extremely Dry)	H
	CPC Precipitation Outlook	1 month: Normal	L
		3 months: Normal	L
	LOK Seasonal Net Inflow Outlook	2.55 ft (Normal)	L
	ENSO La Nina Years		L
	LOK Multi-Seasonal Net Inflow Outlook		L
WCAs	ENSO La Nina Years	4.03 ft (Wet)	L
	WCA 1: Site 1-7, Site 1-8T, & Site 1-9 Average	Above Line 1 (16.47 ft)	L
	WCA 2A: Site 2-17 HW	Above Line 1 (12.98 ft)	L
LEC	WCA-3A: 3 Station Average (Site 63, 64 and 65)	Above Line 1 (11.34 ft)	L
	Service Area 1	Year-Round Irrigation Rule in effect	L
	Service Area 2	Year-Round Irrigation Rule in effect	L
LEC	Service Area 3	Year-Round Irrigation Rule in effect	L

Note: The water supply risk classification based on the Palmer index, as well as the LOK seasonal and multi-seasonal net inflow outlooks use slightly different classification intervals than those used by the 2008-LORS.

[Back to Lake Okeechobee Operations Main Page](#)

[Back to U.S. Army Corps of Engineers LORSS Homepage](#)

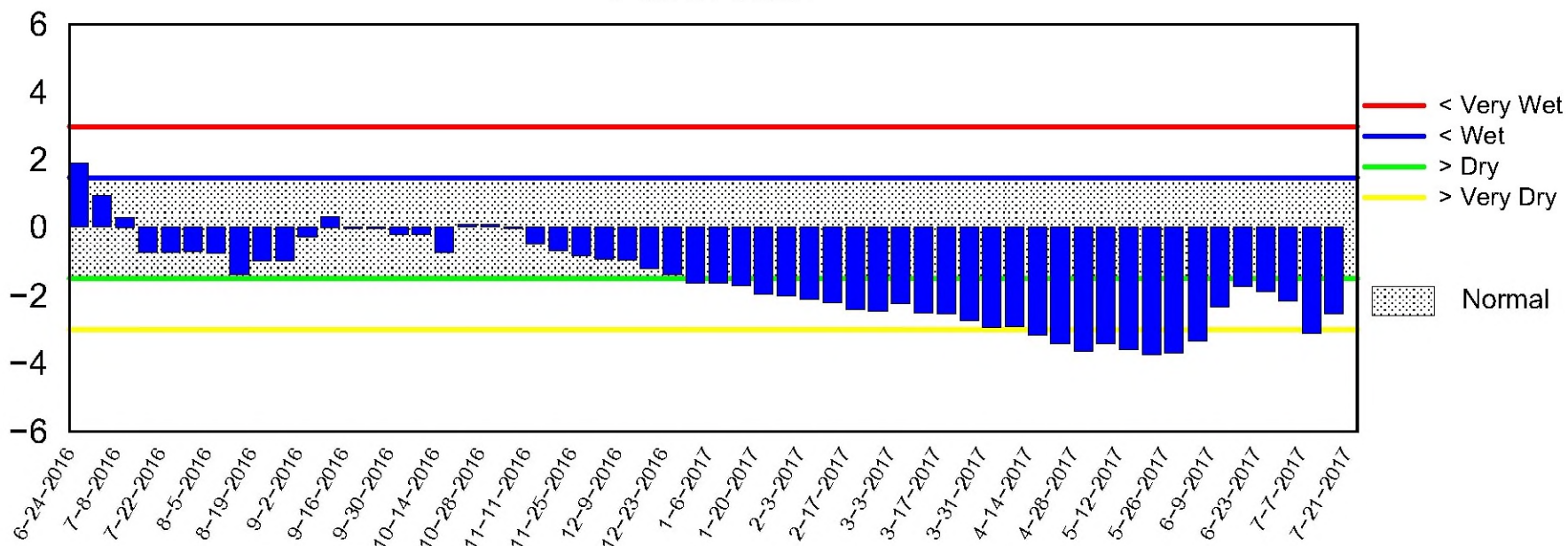
Lake Okeechobee SFWMM July 2017 Dynamic Position Analysis



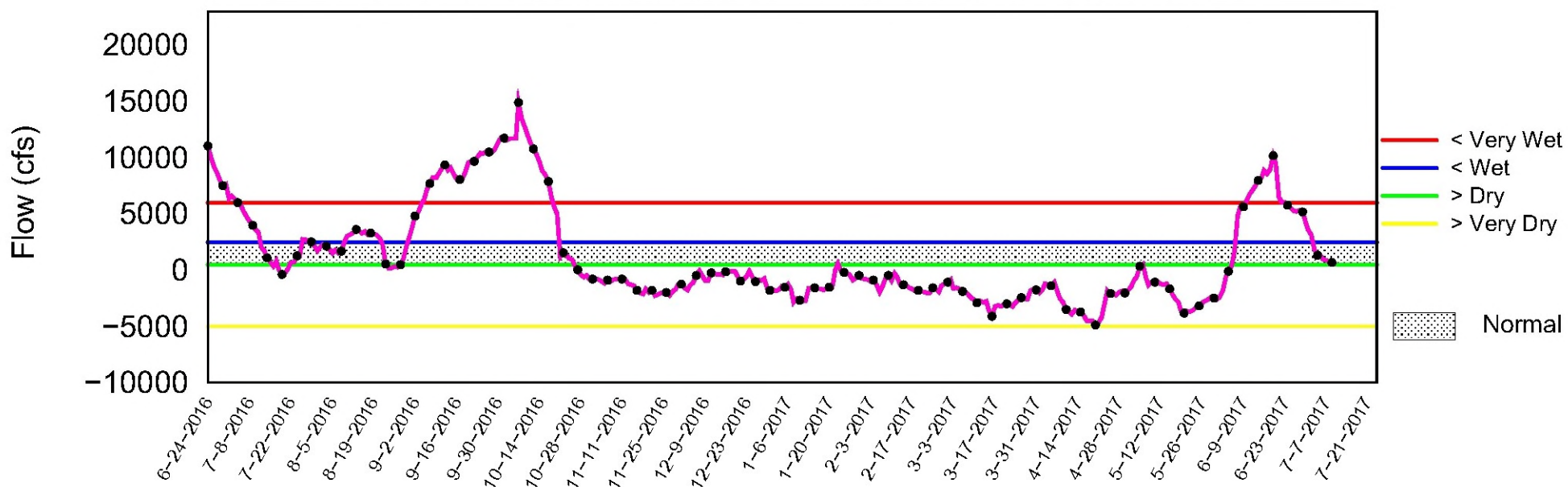
(See assumptions on the Position Analysis Results website)

Tributary Basin Condition Indicators as of July 17 2017

Palmer Index

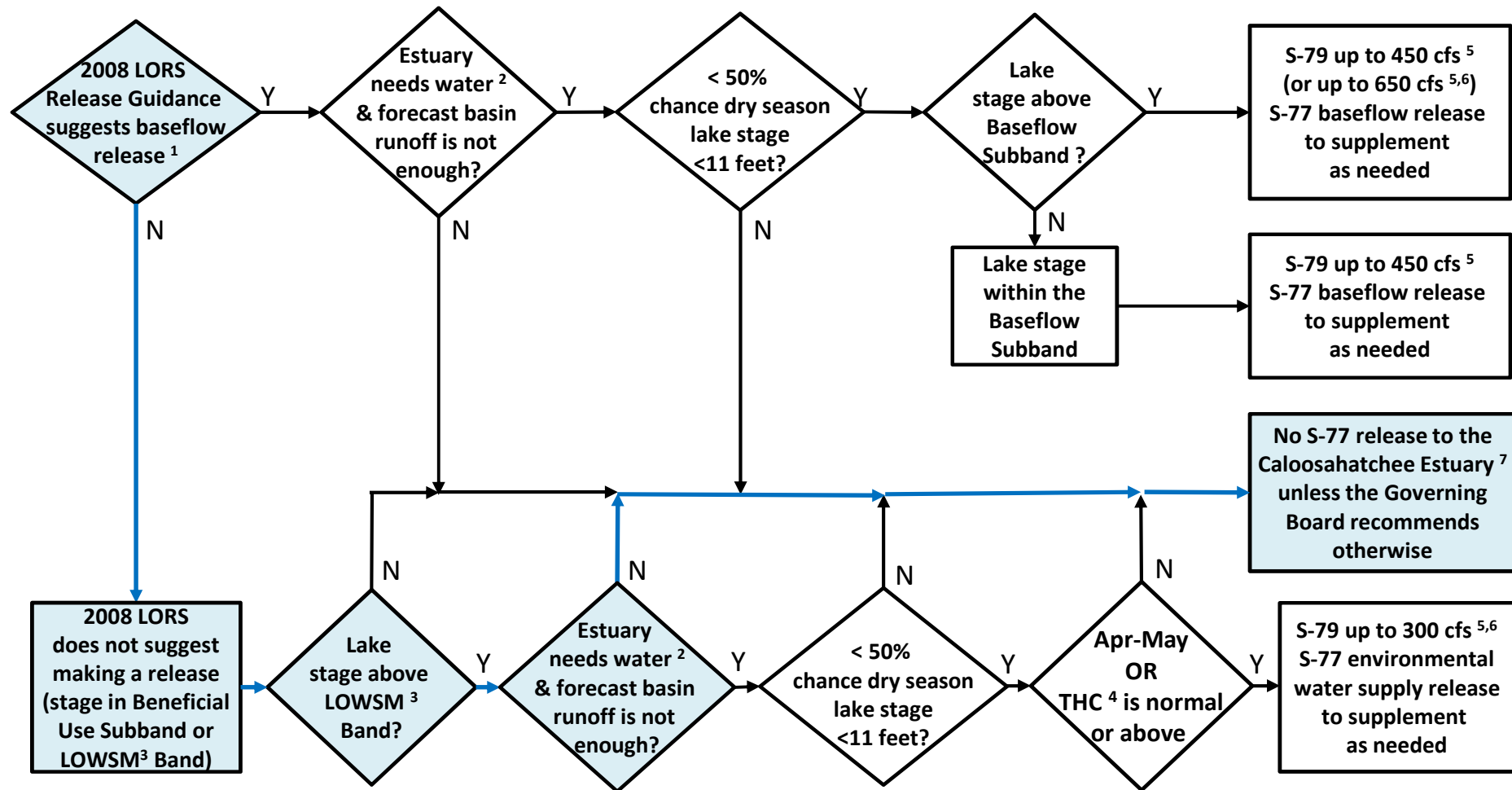


Lake Okeechobee Net Inflow (LONIN) 14-day Running Average



Tue Jul 18 08:59:32 EDT 2017

for 2008 LORS Baseflow & for Environmental Water Supply (revised 9-Aug-2012)



¹The 2008 LORS Release Guidance (Part D) can suggest baseflow releases in the Intermediate, Low, or Baseflow Subbands.

²Estuary “needs” water when the 30-day moving average salinity at I-75 bridge is projected to exceed 5 practical salinity units (psu) within 2 weeks.

³LOWSM = Lake Okeechobee Water Shortage Management.

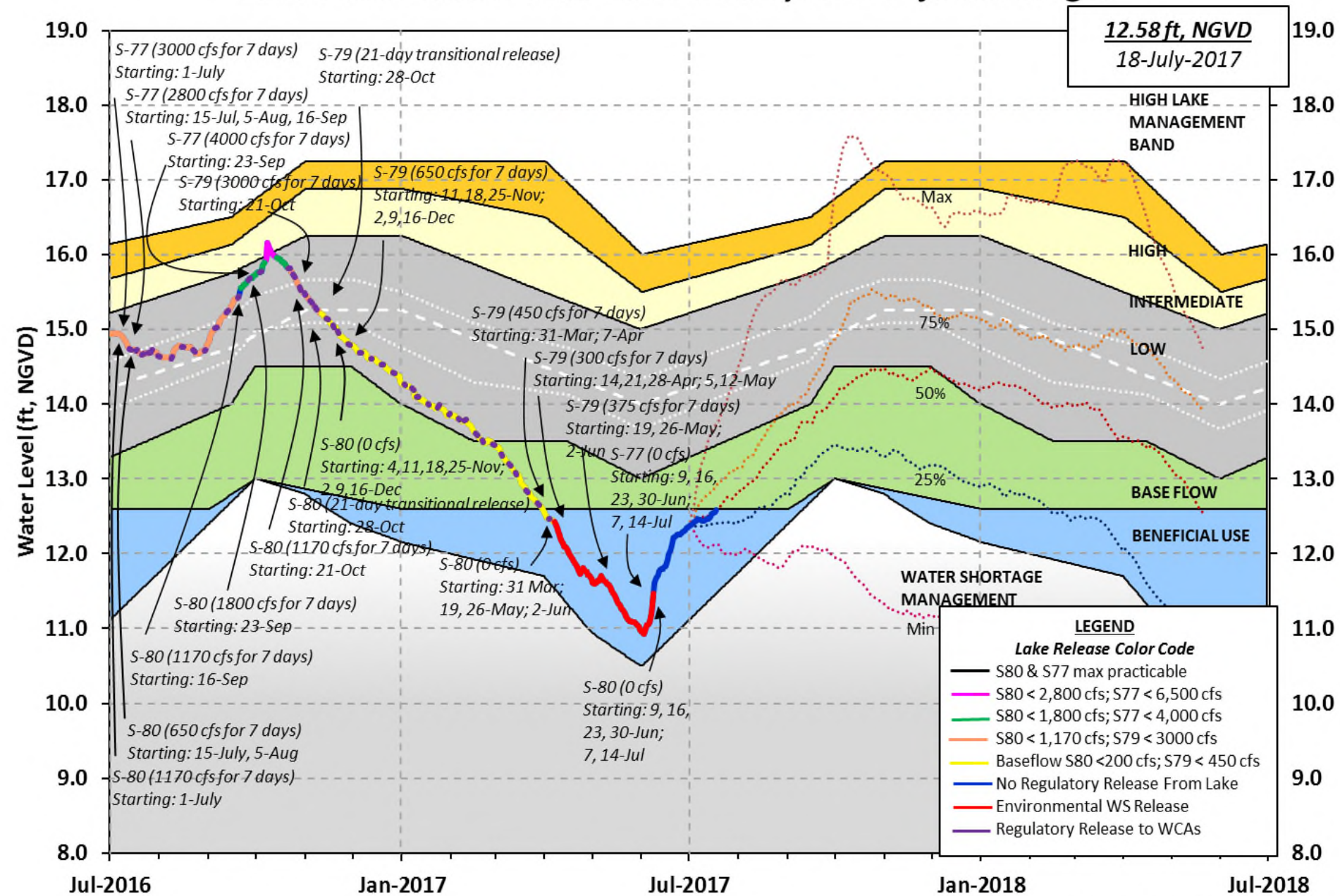
⁴Tributary Hydrologic Condition (THC) is based on classification of Lake Okeechobee Net Inflow and Palmer Index.

⁵Can release less than the “up to” limit if lower release is sufficient to reach or sustain desired estuary salinity; cfs = cubic feet per second.

⁶After reviewing conditions in Water Conservation Areas (WCAs), Stormwater Treatment Areas (STAs), ENP, St. Lucie Estuary and Lake Okeechobee.

⁷Should this condition be reached, the Governing Board will be briefed at their next regularly scheduled meeting as part of the State of the Water Resources agenda item.

Lake Okeechobee Water Level History and Projected Stages



LORS-2008

Adopted by USACE 28-April-2008

Projected Stage Percentiles From
SFWMD-HESM Position Analysis

U. S. Army Corps of Engineers, Jacksonville District
Lake Okeechobee and Vicinity Report
** Preliminary Data - Subject to Revision **

Data Ending 2400 hours 16 JUL 2017

Okeechobee Lake Regulation	Elevation	Last Year	2YRS Ago
	(ft-NGVD)	(ft-NGVD)	(ft-NGVD)
*Okeechobee Lake Elevation	12.56	14.71	11.98 (Official Elv)
Bottom of High Lake Mngmt= 16.21 Top of Water Short Mngmt= 11.43			
Currently in Operational Management Band			

Simulated Average LORS2008 [1965-2000]	12.49
Difference from Average LORS2008	0.07

16JUL (1965-2007) Period of Record Average	13.61
Difference from POR Average	-1.05

Today Lake Okeechobee elevation is determined from the 4 Int & 4 Edge stations

++Navigation Depth (Based on 2007 Channel Condition Survey) Route 1 ÷ 6.50'

++Navigation Depth (Based on 2008 Channel Condition Survey) Route 2 ÷ 4.70'

Bridge Clearance = 50.94'

4 Interior and 4 Edge Okeechobee Lake Average (Avg-Daily values):

L001	L005	L006	LZ40	S4	S352	S308	S133
12.46	12.63	12.57	12.54	12.62	12.68	12.49	12.49

*Combination Okeechobee Avg-Daily Lake Average = 12.56
(*See Note)

Okeechobee Inflows (cfs):

S65E	0	S65EX1	1081	Fisheating Cr	363
S154	0	S191	0	S135 Pumps	0
S84	0	S133 Pumps	0	S2 Pumps	0
S84X	626	S127 Pumps	0	S3 Pumps	0
S71	45	S129 Pumps	0	S4 Pumps	0
S72	42	S131 Pumps	0	C5	0
Total Inflows:		2156			

Okeechobee Outflows (cfs):

S135 Culverts	0	S354	0	S77	1
S127 Culverts	0	S351	0	S308	-NR-
S129 Culverts	-NR-	S352	153		
S131 Culverts	3	L8 Canal Pt	-280		
Total Outflows: No Report Due To Missing S77 or S308 Discharge Data					

S4 Pumps:	12.69	12.50	0	0	0	0	(cfs)
-----------	-------	-------	---	---	---	---	-------

S169:	12.63	12.68	4	5.0	5.0	5.0		
S310:	12.54		-118					
S3 Pumps:	9.56	12.49	0	0	0	0		(cfs)
S354:	12.49	9.56	0	0.0	0.0			
S2 Pumps:	10.61	12.40	0	0	0	0	0	(cfs)
S351:	12.40	10.61	0	0.0	0.0	0.0		
S352:	12.65	9.44	153	0.0	0.0			
C10A:	-NR-	12.76		8.0	8.0	8.0	0.0	0.0
L8 Canal PT		12.64	-280					

S351 and S352 Temporary Pumps/S354 Spillway

S351:	10.61	12.40	0	-NR--NR--NR--NR--NR--NR-
S352:	9.44	12.65	153	-NR--NR--NR--NR-
S354:	9.56	12.49	0	-NR--NR--NR--NR-

Caloosahatchee River (S77, S78, S79)

S47B:	14.44	11.05		0.0	0.0
S47D:	11.05	11.04	65	6.5	

S77:

Spillway and Sector Flow:

	12.67	11.13	0.00	0.0	0.0	0.0	0.0
--	-------	-------	------	-----	-----	-----	-----

Flow Due to Lockages+: 1

S77 Below USGS Flow Gage -138

S78:

Spillway and Sector Flow:

	-NR-	-NR-	-NR-	1.0	0.0	0.0	1.0
--	------	------	------	-----	-----	-----	-----

Flow Due to Lockages+: -NR-

S79:

Spillway and Sector Flow:

	2.97	1.84	1722	1.0	1.0	1.0	1.0	1.0	1.0	1.0
--	------	------	------	-----	-----	-----	-----	-----	-----	-----

0.0

Flow Due to Lockages+: 8

Percent of flow from S77 0%

Chloride (ppm) 54

St. Lucie Canal (S308, S80)

S308:

Spillway and Sector Flow:

	12.51	12.56	*****	2.0	2.0	2.0	2.0
--	-------	-------	-------	-----	-----	-----	-----

Flow Due to Lockages+: -NR-

S308 Below USGS Flow Gage -220

S153:	18.50	12.31	195	0.3	0.4
-------	-------	-------	-----	-----	-----

S80:

Spillway and Sector Flow:

	0.00	0.00	-2429	0.0	0.0	0.0	0.0	0.0	0.0
--	------	------	-------	-----	-----	-----	-----	-----	-----

Flow Due to Lockages+: -NR-

Percent of flow from S308 9%

Steele Point Top Salinity (mg/ml) ****

Steele Point Bottom Salinity (mg/ml) ****

Speedy Point Top Salinity (mg/ml) ****

Speedy Point Bottom Salinity (mg/ml) ****

+ Flow Due to lockages is computed utilizing average daily headwater and tailwater along with total number of lockages for the day to calculate a volume which is then converted to an average discharge in cfs.

----- Wind ---					

Daily Precipitation Totals	1-Day	3-Day	7-Day	Direction	
Speed	(inches)	(inches)	(inches)	(Degø)	
(mph)					
S133 Pump Station:	-NR-	0.00	0.00		
S193:	-NR-	0.00	0.00	-NR-	-NR-
Okeechobee Field Station:	-NR-	0.00	0.00		
S135 Pump Station:	-NR-	0.00	0.00		
S127 Pump Station:	-NR-	0.00	0.00		
S129 Pump Station:	-NR-	0.00	0.00		
S131 Pump Station:	-NR-	0.00	0.00		
S77:	0.00	0.53	1.82	160	2
S78:	0.00	0.07	0.81	-NR-	-NR-
S79:	0.00	0.09	0.66	270	0
S4 Pump Station:	-NR-	0.00	0.00		
Clewiston Field Station:	-NR-	0.00	0.00		
S3 Pump Station:	-NR-	0.00	0.00		
S2 Pump Station:	-NR-	0.00	0.00		
S308:	0.04	0.04	0.50	140	4
S80:	0.96	0.96	0.98	0	0
Okeechobee Average	0.02	0.04	0.18		
(Sites S78, S79 and S80 not included)					

Oke Nexrad Basin Avg	-NR-	0.47	1.62		

Okeechobee Lake Elevations	16 JUL 2017	12.56	Difference from
16JUL17			
16JUL17 -1 Day =	15 JUL 2017	12.54	-0.02
16JUL17 -2 Days =	14 JUL 2017	12.53	-0.03
16JUL17 -3 Days =	13 JUL 2017	12.49	-0.07
16JUL17 -4 Days =	12 JUL 2017	12.46	-0.10
16JUL17 -5 Days =	11 JUL 2017	12.46	-0.10
16JUL17 -6 Days =	10 JUL 2017	12.45	-0.11
16JUL17 -7 Days =	09 JUL 2017	12.44	-0.12
16JUL17 -30 Days =	16 JUN 2017	11.93	-0.63
16JUL17 -1 Year =	16 JUL 2016	14.71	2.15
16JUL17 -2 Year =	16 JUL 2015	11.98	-0.58

Long Term Mean 30day Avearge ET for Lake Alfred (Inches) = 4.52

Lake Okeechobee Net Inflow (LONIN)						
Average Flow over the previous 14 days					Avg-Daily Flow	
16JUL17	Today =	16 JUL 2017	2321	MON	4085	
16JUL17	-1 Day =	15 JUL 2017	2303	SUN	2571	
16JUL17	-2 Days =	14 JUL 2017	2256	SAT	7865	
16JUL17	-3 Days =	13 JUL 2017	1968	FRI	5899	
16JUL17	-4 Days =	12 JUL 2017	1684	THU	0	
16JUL17	-5 Days =	11 JUL 2017	2094	WED	1966	
16JUL17	-6 Days =	10 JUL 2017	2091	TUE	1966	
16JUL17	-7 Days =	09 JUL 2017	2261	MON	0	
16JUL17	-8 Days =	08 JUL 2017	2554	SUN	-1942	
16JUL17	-9 Days =	07 JUL 2017	2693	SAT	154	
16JUL17	-10 Days =	06 JUL 2017	2822	FRI	-1864	
16JUL17	-11 Days =	05 JUL 2017	3236	THU	3933	
16JUL17	-12 Days =	04 JUL 2017	3236	WED	3933	
16JUL17	-13 Days =	03 JUL 2017	3780	TUE	3933	

S65E						
Average Flow over previous 14 days					Avg-Daily Flow	
16JUL17	Today=	16 JUL 2017	0	MON	0	
16JUL17	-1 Day =	15 JUL 2017	0	SUN	0	
16JUL17	-2 Days =	14 JUL 2017	0	SAT	0	
16JUL17	-3 Days =	13 JUL 2017	0	FRI	0	
16JUL17	-4 Days =	12 JUL 2017	0	THU	0	
16JUL17	-5 Days =	11 JUL 2017	0	WED	0	
16JUL17	-6 Days =	10 JUL 2017	0	TUE	0	
16JUL17	-7 Days =	09 JUL 2017	0	MON	0	
16JUL17	-8 Days =	08 JUL 2017	0	SUN	0	
16JUL17	-9 Days =	07 JUL 2017	0	SAT	0	
16JUL17	-10 Days =	06 JUL 2017	0	FRI	0	
16JUL17	-11 Days =	05 JUL 2017	0	THU	0	
16JUL17	-12 Days =	04 JUL 2017	0	WED	0	
16JUL17	-13 Days =	03 JUL 2017	0	TUE	0	

S65EX1						
Average Flow over previous 14 days					Avg-Daily Flow	
16JUL17	Today=	16 JUL 2017	899	MON	1081	
16JUL17	-1 Day =	15 JUL 2017	932	SUN	1076	
16JUL17	-2 Days =	14 JUL 2017	974	SAT	1025	
16JUL17	-3 Days =	13 JUL 2017	1027	FRI	862	
16JUL17	-4 Days =	12 JUL 2017	1094	THU	785	
16JUL17	-5 Days =	11 JUL 2017	1169	WED	681	
16JUL17	-6 Days =	10 JUL 2017	1250	TUE	659	
16JUL17	-7 Days =	09 JUL 2017	1322	MON	643	
16JUL17	-8 Days =	08 JUL 2017	1389	SUN	728	
16JUL17	-9 Days =	07 JUL 2017	1449	SAT	764	
16JUL17	-10 Days =	06 JUL 2017	1497	FRI	785	
16JUL17	-11 Days =	05 JUL 2017	1546	THU	943	
16JUL17	-12 Days =	04 JUL 2017	1581	WED	1205	

16JUL17 -13 Days =

03 JUL 2017

1592 TUE

| 1356

Lake Okeechobee Outlets Last 14 Days

	S-77	Below S-77	S-78	S-79
	Discharge	Discharge	Discharge	Discharge
	(ALL DAY)	(ALL-DAY)	(ALL DAY)	(ALL DAY)
DATE	(AC-FT)	(AC-FT)	(AC-FT)	(AC-FT)
16 JUL 2017	2	-273	-NR-	3409
15 JUL 2017	3	-59	1094	3146
14 JUL 2017	3	-244	724	2819
13 JUL 2017	3	-163	711	2712
12 JUL 2017	2	-137	713	1857
11 JUL 2017	3	-74	557	1765
10 JUL 2017	1	-87	368	1834
09 JUL 2017	3	-153	-NR-	1168
08 JUL 2017	46	137	19	1237
07 JUL 2017	296	622	24	998
06 JUL 2017	210	182	222	1761
05 JUL 2017	3	-298	362	2875
04 JUL 2017	3	-114	362	2094
03 JUL 2017	6	-158	699	3134

	S-310	S-351	S-352	S-354	L8 Canal Pt
	Discharge	Discharge	Discharge	Discharge	Discharge
	(ALL DAY)	(ALL DAY)	(ALL DAY)	(ALL DAY)	(ALL DAY)
DATE	(AC-FT)	(AC-FT)	(AC-FT)	(AC-FT)	(AC-FT)
16 JUL 2017	-235	0	303	0	-554
15 JUL 2017	-485	0	1067	0	-614
14 JUL 2017	-407	0	0	0	-763
13 JUL 2017	-194	0	0	0	-816
12 JUL 2017	237	-NR-	0	0	-593
11 JUL 2017	170	0	0	0	-625
10 JUL 2017	303	0	0	0	-700
09 JUL 2017	187	0	0	0	-744
08 JUL 2017	310	0	0	0	-731
07 JUL 2017	360	0	0	0	-798
06 JUL 2017	387	0	0	0	-957
05 JUL 2017	333	0	0	0	-1076
04 JUL 2017	375	0	0	0	-1040
03 JUL 2017	170	0	0	0	-992

	S-308	Below S-308	S-80
	Discharge	Discharge	Discharge
	(ALL DAY)	(ALL-DAY)	(ALL-DAY)
DATE	(AC-FT)	(AC-FT)	(AC-FT)
16 JUL 2017	-NR-	-437	-NR-
15 JUL 2017	-860	-495	-NR-
14 JUL 2017	-1310	-825	-NR-
13 JUL 2017	-NR-	-1016	10
12 JUL 2017	-1826	-762	25
11 JUL 2017	-1086	-638	28
10 JUL 2017	-827	-654	18
09 JUL 2017	-757	-502	28
08 JUL 2017	-351	-472	35
07 JUL 2017	-513	-391	42

06 JUL 2017	-1505	-521	28
05 JUL 2017	-1332	-300	36
04 JUL 2017	-910	-598	18
03 JUL 2017	-1195	-699	40

*** NOTE: Discharge (ALL DAY) is computed using Spillway, Sector Gate and

Lockages Discharges from 0015 hrs to 2400 hrs.

—

(I) - Flows preceded by "I" signify an instantaneous flow computed from the single value reported for the day

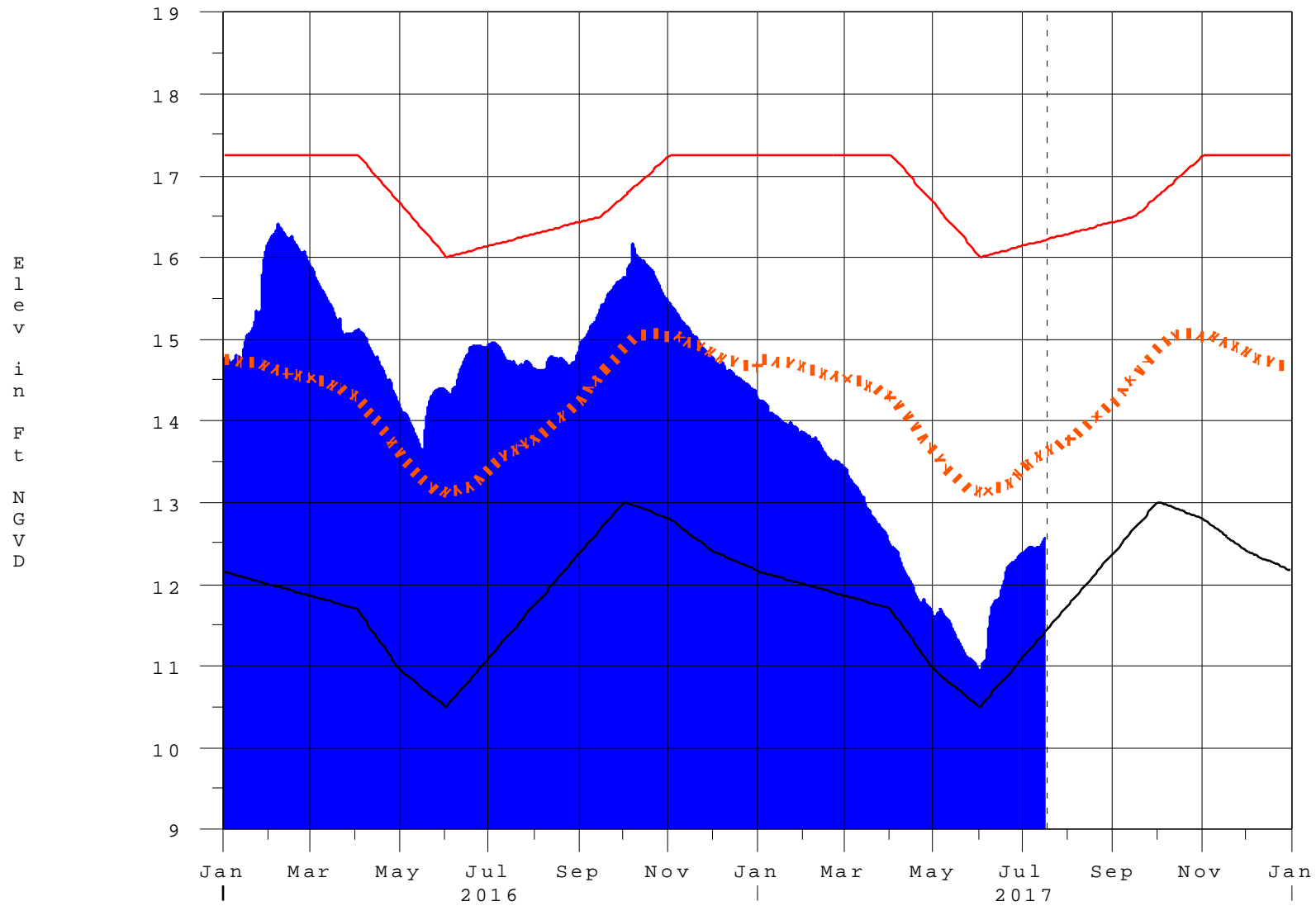
—

* On 11 May 1999, Lake Okeechobee Elevation was switched from Instantaneous 2400 value to an average-daily lake average.
 On 14 Mar 2001, due to the isolation of various gages within the standard
 10 stations, the average of the interior 4 station gages was used as the Lake Okeechobee Elevation.
 On 05 November 2010, Lake Okeechobee Elevation was switched to a 9 gage mix of interior and edge gages to obtain a more reliable representation of the lake level.
 On 09 May 2011, Lake Okeechobee Elevation was switched to a 8 gage mix of interior and edge gages to obtain a more reliable representation of the lake level due to isolation of S135 from low lake levels.
 Today Lake Okechobee elevation is determined from the 4 Int & 4 Edge stations
 ++ For more information see the Jacksonville District Navigation website at <http://www.saj.usace.army.mil/>
 \$ For information regarding Lake Okeechobee Service Area water restrictions
 please refer to www.sfwmd.gov

—
 Report Generated 17JUL2017 @ 14:15 ** Preliminary Data - Subject to Revision
 **

Lake Okeechobee

17JUL17 14:17:19



- High Lake Management
- Okeechobee Avg Elev
- Average Elev [1965-2007]
- Water Shortage Management

Classification Tables

Supplemental Tables used in conjunction with the LORS2008 Release

Guidance Flow Charts

- [Class Limits for Tributary Hydrologic Conditions](#)

Table K-2 in the Lake Okeechobee Water Control Plan

- [6-15 Day Precipitation Outlook Categories](#)

Table ?? in the Lake Okeechobee Water Control Plan

- [Classification of Lake Okeechobee Net Inflow for Seasonal Outlook](#)

Table K-3 in the Lake Okeechobee Water Control Plan

- [Classification of Lake Okeechobee Net Inflow for Multi-Seasonal Outlook](#)

Table K-4 in the Lake Okeechobee Water Control Plan

[Back to Lake Okeechobee Operations Main Page](#)

[Back to U.S. Army Corps of Engineers Lake Okeechobee Operations Homepage](#)

Tributary Hydrologic Classification*	Palmer Index Class Limits	2-wk Mean L.O. Net Inflow Class Limits
Very Wet	3.0 or greater	Greater \geq 6000 cfs
Wet	1.5 to 2.99	2500 - 5999 cfs
Near Normal	-1.49 to 1.49	500 - 2499 cfs
Dry	-2.99 to -1.5	-5000 – 500 cfs
Very Dry	-3.0 or less	Less than -5000 cfs

* use the wettest of the two indicators

Classification of Lake Okeechobee Net Inflow Seasonal Outlook*

Lake Net Inflow Prediction [million acre-feet]	Equivalent Depth** [feet]	Lake Okeechobee Net Inflow Seasonal Outlook
> 0.93	> 2.0	Very Wet
0.71 to 0.93	1.51 to 2.0	Wet
0.35 to 0.70	0.75 to 1.5	Normal
< 0.35	< 0.75	Dry

****Volume-depth conversion based on average lake surface area of 467,000 acres**

Classification of Lake Okeechobee Net Inflow Multi-Seasonal Outlook*

Lake Net Inflow Prediction [million acre-feet]	Equivalent Depth** [feet]	Lake Okeechobee Net Inflow Multi-Seasonal Outlook
> 2.0	> 4.3	Very Wet
1.18 to 2.0	2.51 to 4.3	Wet
0.5 to 1.17	1.1 to 2.5	Normal
< 0.5	< 1.1	Dry

****Volume-depth conversion based on average lake surface area of 467,000 acres**

6-15 Day Precipitation Outlook Categories*

6-15 Day Precipitation Outlook Categories	WSE Decision Tree Categories
Above Normal	Wet to Very Wet
Normal	Normal
Below Normal	Dry

*** Corresponds to Table 7-6 in the Lake Okeechobee Water Control Plan**

Under Construction