

# CENTRAL AND SOUTHERN FLORIDA (C&SF) FLOOD RESILIENCY STUDY

## PERFORMANCE METRICS WORKSHOP

Public Meeting

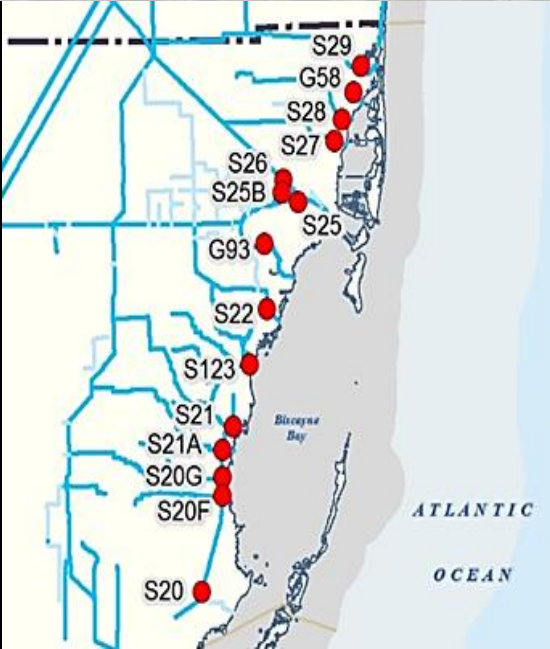
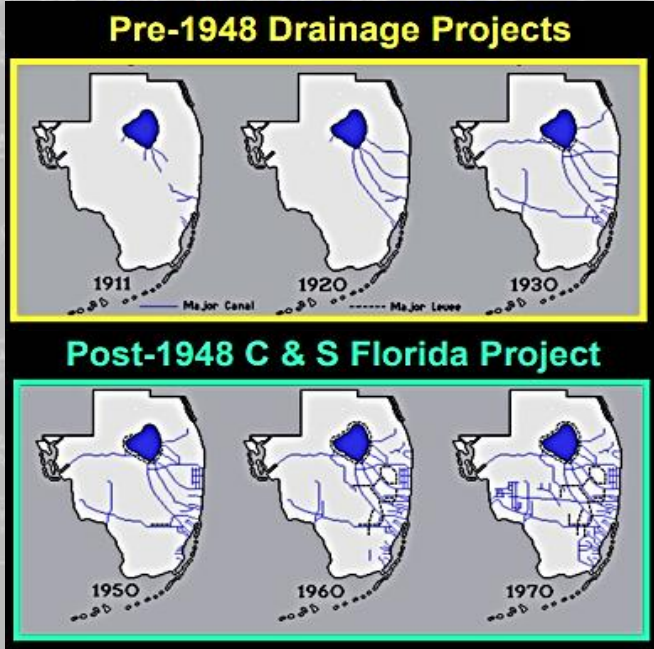
7 and 8 March 2024 (Day 2)

Virtual Meeting

*Working Today to Build a Better Tomorrow*



US Army Corps  
of Engineers®





# 1. WORKSHOP AGENDA AND GOAL

Presenters: Gustavo Suarez, USACE Planning Technical Lead  
Jenny Smith, SFWMD Project Manager



# AGENDA



1. Welcoming
    - I. Summary of Previous Day Workshop
    - II. Goals and Instructions
  2. Performance Metrics Discussion and Breakout Sections (by Reach)
    - Regional Economic Development (RED)
      - Breakout Section 1 - Reach A: Broward and Hillsboro Basins
      - Breakout Section 2 - Reach B: Little River and Nearby Basins
      - Breakout Section 3 - Reach C: Miami River and Nearby Basins
      - Breakout Section 4 - Reach D: South Miami Basins
    - Environmental Quality (EQ) - Performance Metrics
      - Breakout Section 1 - Reach A: Broward and Hillsboro Basins
      - Breakout Section 2 - Reach B: Little River and Nearby Basins
      - Breakout Section 3 - Reach C: Miami River and Nearby Basins
      - Breakout Section 4 - Reach D: South Miami Basins
    - Other Social Effects (OSE)
      - Breakout Section 1 - Reach A: Broward and Hillsboro Basins
      - Breakout Section 2 - Reach B: Little River and Nearby Basins
      - Breakout Section 3 - Reach C: Miami River and Nearby Basins
      - Breakout Section 4 - Reach D: South Miami Basins
  3. Summary and Reporting
  4. Closing Remarks and Next Steps
  5. Meeting Adjourn
- 8:30 am to 9:00 am
- 9:00 am to 10:00 am
- 10:00 am to 11:00 am
- 11:00 am to 12:00 pm
- 12:00 pm to 12:30 pm
- 12:30 pm to 1:00 pm



# WORKSHOP GOAL

---



- Day 2
  - Group Discussion, team input Draft Performance Metrics, identify Reach performance metric priorities for each USACE account (RED, EQ and OSE).



# **2. BREAKOUT SECTIONS (BY REACH)**

**PERFORMANCE METRICS DISCUSSION FOR EACH USACE ACCOUNTS**



# BREAKOUT SECTIONS – 9:00 AM TO 10:00 AM



## Regional Economic Development (RED) - Performance Metrics

- Breakout Section 1 - Reach A: Broward and Hillsboro Basins  
Moderator: USACE Economics
- Breakout Section 2 - Reach B: Little River and Nearby Basins  
Moderator: USACE Economics
- Breakout Section 3 - Reach C: Miami River and Nearby Basins  
Moderator: USACE Economics
- Breakout Section 4 - Reach D: South Miami Basins  
Moderator: USACE Economics





# BREAKOUT SECTIONS – 10:00 AM TO 11:00 AM



## Environmental Quality (EQ) - Performance Metrics

- Breakout Section 1 - Reach A: Broward and Hillsboro Basins  
Moderator: USACE Economics and USACE Environmental
- Breakout Section 2 - Reach B: Little River and Nearby Basins  
Moderator: Del Cabeche, USACE Economics and USACE Environmental
- Breakout Section 3 - Reach C: Miami River and Nearby Basins  
Moderator: USACE Economics and USACE Environmental
- Breakout Section 4 - Reach D: South Miami Basins  
Moderator: Colin Rawls, USACE Economics and SFWMD Environmental



# BREAKOUT SECTIONS – 11:00 AM TO 12:00 PM



## Other Social Effects (OSE) - Performance Metrics

- Breakout Section 1 - Reach A: Broward and Hillsboro Basins  
Moderator: USACE Economics
- Breakout Section 2 - Reach B: Little River and Nearby Basins  
Moderator: USACE Economics
- Breakout Section 3 - Reach C: Miami River and Nearby Basins  
Moderator: USACE Economics
- Breakout Section 4 - Reach D: South Miami Basins  
Moderator: USACE Economics

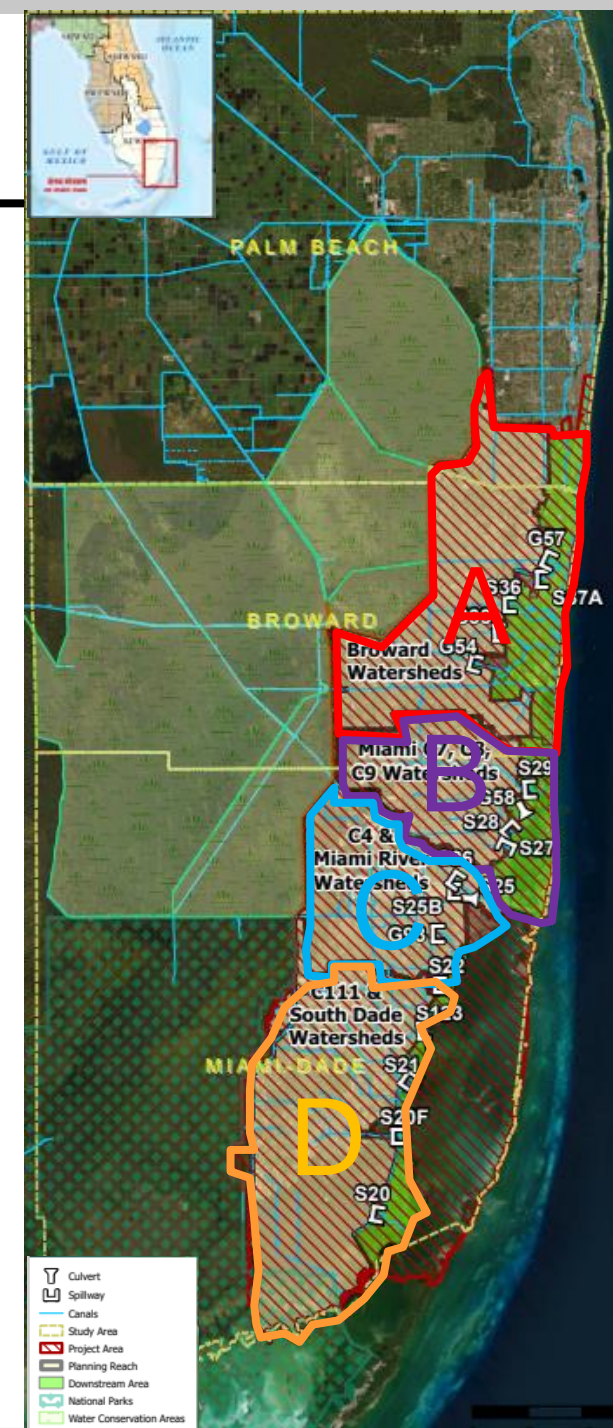




# BREAKOUT SECTIONS

There are currently 4 planning focus areas identified for the study:

- Reach A: Broward and Hillsboro Basins
- Reach B: Little River and Nearby Basins
- Reach C: Miami River and Nearby Basins
- Reach D: South Miami Basins





# 3. SUMMARY AND REPORTING



---

## Workshop Recap

# Reach A: Broward and Hillsboro Basins



---

## Workshop Recap

# Reach B: Little River and Nearby Basins



---

Workshop Recap

# Reach C: Miami River and Nearby Basins



---

## Workshop Recap

# Reach D: South Miami Basins



# 4. CLOSING REMARKS AND NEXT STEPS

Presenters: Tim Gysan, USACE Project Manager





COMMENTS TO BE RECEIVED BY EMAIL AT  
[CSFFRSCOMMENTS@USACE.ARMY.MIL](mailto:CSFFRSCOMMENTS@USACE.ARMY.MIL)

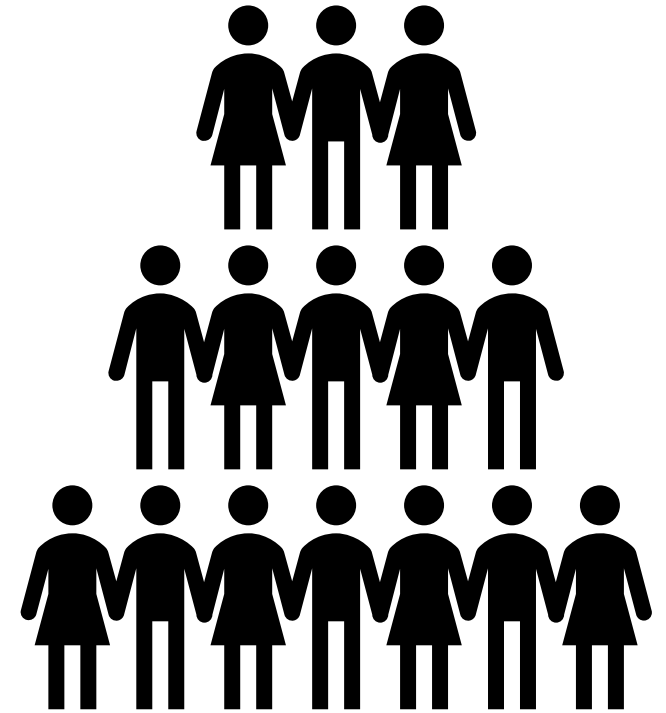
VISIT OUR WEBSITES FOR MORE UPDATES AND  
STUDY DETAILS



**USACE:**  
[WWW.SAJ.USACE.ARMY.MIL/CSFFRS](http://WWW.SAJ.USACE.ARMY.MIL/CSFFRS)



**SFWMD:**  
[WWW.SFWMD.GOV/C&SF](http://WWW.SFWMD.GOV/C&SF)



**COLLABORATION!**