



FAQ's - SFWMD Resiliency Efforts



S-59 Structure, Osceola County

Why is flood protection important to our region?

The regional water management system, known as the Central and Southern Florida (C&SF) project system, was designed 70 years ago to protect residents and businesses from floods, protect water supply sources, and prevent saltwater intrusion, among other project purposes. Since then, South Florida has experienced population growth, land development, and changing climate conditions that exceed the design conditions of the C&SF system.

A key part of the South Florida Water Management District's (SFWMD) resiliency strategy includes the continued evaluation of flood control infrastructure and the advancement of adaptation strategies necessary to continue providing flood protection for Central and Southern Florida.

What are flood control infrastructure and assets?

Flood control infrastructure and assets are specifically designed and maintained for moving excess water away from people to provide flood control. Some examples of flood control assets include water control structures, culverts, canals, levees, and pump stations. While SFWMD operates the primary water management system, local governments and special drainage operators run local water management systems that also provide flood protection.

SFWMD's Flood Protection Level of Service (FPLOS) Program

What is it?

A key piece of the SFWMD's resiliency efforts is the Flood Protection Level of Service Program. Under this program, the SFWMD studies its flood control infrastructure such as canals, water control structures, levees, and pump stations to ensure these assets can provide the level of flood protection they were designed for while accounting for future conditions – including extreme rainfall, sea level rise and other climate impacts.

Why is it being implemented?

The SFWMD established the Flood Protection Level of Service program to fulfill the need of long-term flood protection for basins throughout the 16-county region.

Where is it being implemented?

The Flood Protection Level of Service Program covers the entire 16-county region that falls within the boundaries of the SFWMD. The SFWMD has prioritized basins and watersheds based on flood risk, including risks related to sea level rise, and has initiated basin assessments in the highest priority basins in Miami-Dade, Broward, Palm Beach, Upper Kissimmee (Osceola) and Collier counties.

How is it being implemented?

The Flood Protection Level of Service Program is being executed in three stages:

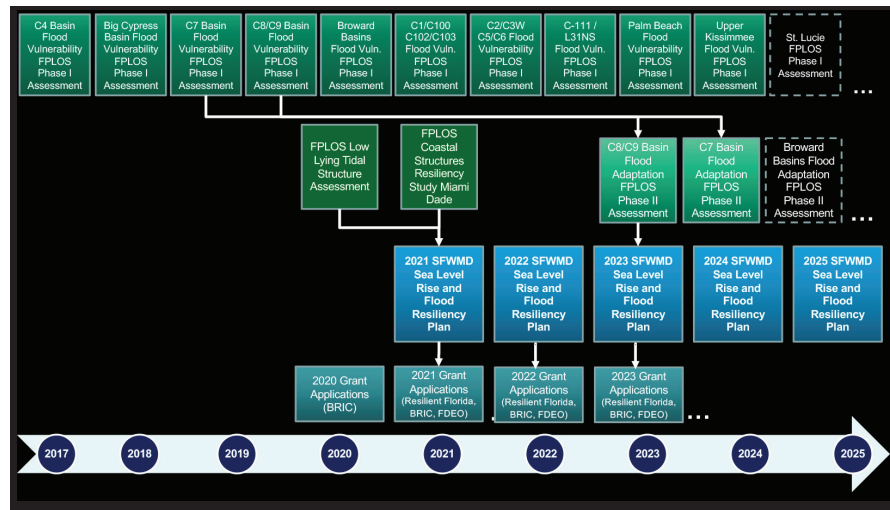
Phase I: Assessment Phase

Phase II: Adaptation and Mitigation Planning Phase

Phase III: Implementation Phase

Are there any complete or ongoing efforts?

The chart below is a list of completed and ongoing Flood Protection Level of Service Program efforts.



How is it funded?

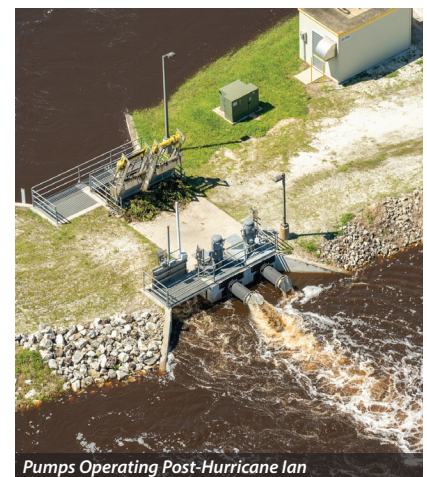
The Flood Protection Level of Service Program is funded by the SFWMD. The studies will be conducted every eight to 10 years and are estimated to cost about \$2 million per year. Adaptation Planning Studies are anticipated to cost an additional \$2 million per year. Program funding does not include design costs. Design costs will be included with funding upon confirmation for each individual recommended flood adaptation project.

Where can I learn more?

Visit [SFWMD.gov/FPLOS](https://sfwmd.gov/FPLOS).

Who can I contact?

Email resiliency@sfwmd.gov.



Pumps Operating Post-Hurricane Ian

SFWMD's Sea Level Rise and Flood Resiliency Plan

What is it?

The Sea Level Rise and Flood Resiliency Plan is the first SFWMD initiative to compile a comprehensive list of priority resiliency projects with the goal of reducing the risks of flooding, sea level rise, and other climate impacts on water resources and increasing community and ecosystem resiliency in South Florida.

Why is it being implemented?

The SFWMD developed the first Sea Level Rise and Flood Resiliency Plan in September 2021 in response to Senate Bill 1954 (2021) - Statewide Flooding and Sea Level Rise Resilience, which established the Resilient Florida Grant Program within the Florida Department of Environmental Protection (DEP). Updated plans undergo public review every year and are submitted to DEP annually.

Where is it being implemented?

The Sea Level Rise and Flood Resiliency Plan covers the entire 16-county region that falls within the boundaries of the SFWMD.

When is it being implemented?

The Sea Level Rise and Flood Resiliency Plan will be updated each year with additional projects and relevant resiliency information.

How is it being implemented?

The Sea Level Rise and Flood Resiliency Plan contains a list of priority projects that were compiled based upon vulnerability assessments that have been ongoing for the past decade, as well as projects identified as part of post event response actions. These projects represent urgent actions needed to address the vulnerability of existing flood protection infrastructure.

Are there any complete or ongoing efforts?

Projects recommended in the SFWMD Resiliency Plan are now in design and preliminary implementation phases.

How is it funded?

The plan identifies an estimated cost of \$3.7 billion in infrastructure investments and funding is being pursued through SFWMD Ad Valorem (design costs), State Appropriations and other State and Federal Grant Opportunities.

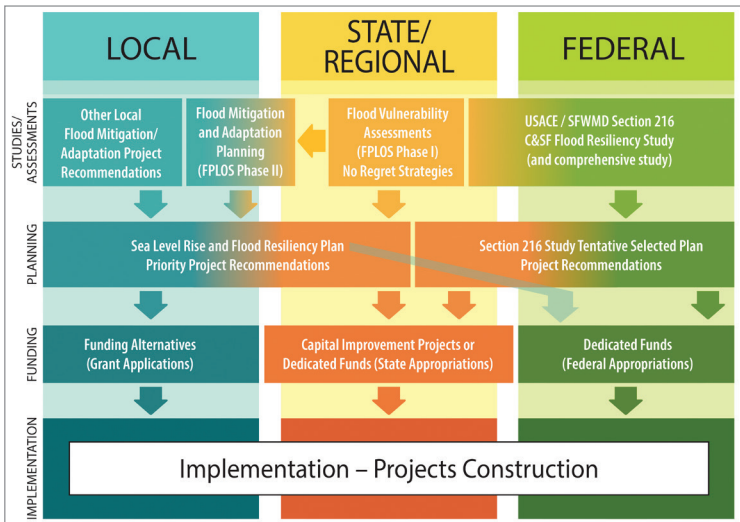
Where can I learn more?

Visit [SFWMD.gov/FloodResiliencyPlan](https://sfwmd.gov/FloodResiliencyPlan).

Who can I contact?

Email resiliency@sfwmd.gov.

Flood Risk Assessments being advanced at the Local, Regional, State and Federal Level and the path to implementation of recommended projects.



Miami Skyline

Central and Southern Florida (C&SF) Flood Resiliency Study

What is it?

The U.S. Army Corps of Engineers (USACE) and the SFWMD are partnering to advance the C&SF Flood Resiliency Study with the goal of assessing the implications of changing conditions within the C&SF system and identifying measures to ensure its resilience, now and into the future.

Why is it being implemented?

The Section 216 C&SF Flood Resiliency Study is necessary due to significantly changed physical, hydrological, climatological, demographic, and economic conditions within the landscape served by the C&SF system; the current hazards to the associated aquifer and surrounding environment affected by the system; and for purposes of flood risk management, saltwater intrusion prevention, water supply protection, ecosystem restoration, and for maintaining recreation and any other water-related resource needs.

Who is implementing it?

USACE and the SFWMD are developing the Section 216 Study.

Where is it being implemented?

The study area includes urban watersheds of Palm Beach, Broward and Miami-Dade Counties where the most vulnerable C&SF structures are located.

When is it being implemented?

The USACE and SFWMD initiated the C&SF Flood Resiliency Study in Fall 2022 with expected completion in three years.

How is it being implemented?

The C&SF Flood Resiliency Study is being implemented in partnership with Broward, Palm Beach and Miami-Dade Counties and involves extensive communication and engagement with stakeholders in the region.

How is it funded?

USACE and the SFWMD will each fund 50% of the C&SF Flood Resiliency study cost. For the federally authorized projects included as part of the study's final recommended projects, USACE will fund 65% and SFWMD will fund 35%.

Where can I learn more?

Visit [SFWMD.gov/C&SF](https://sfwmd.gov/C&SF).

Who can I contact?

Email resiliency@sfwmd.gov.