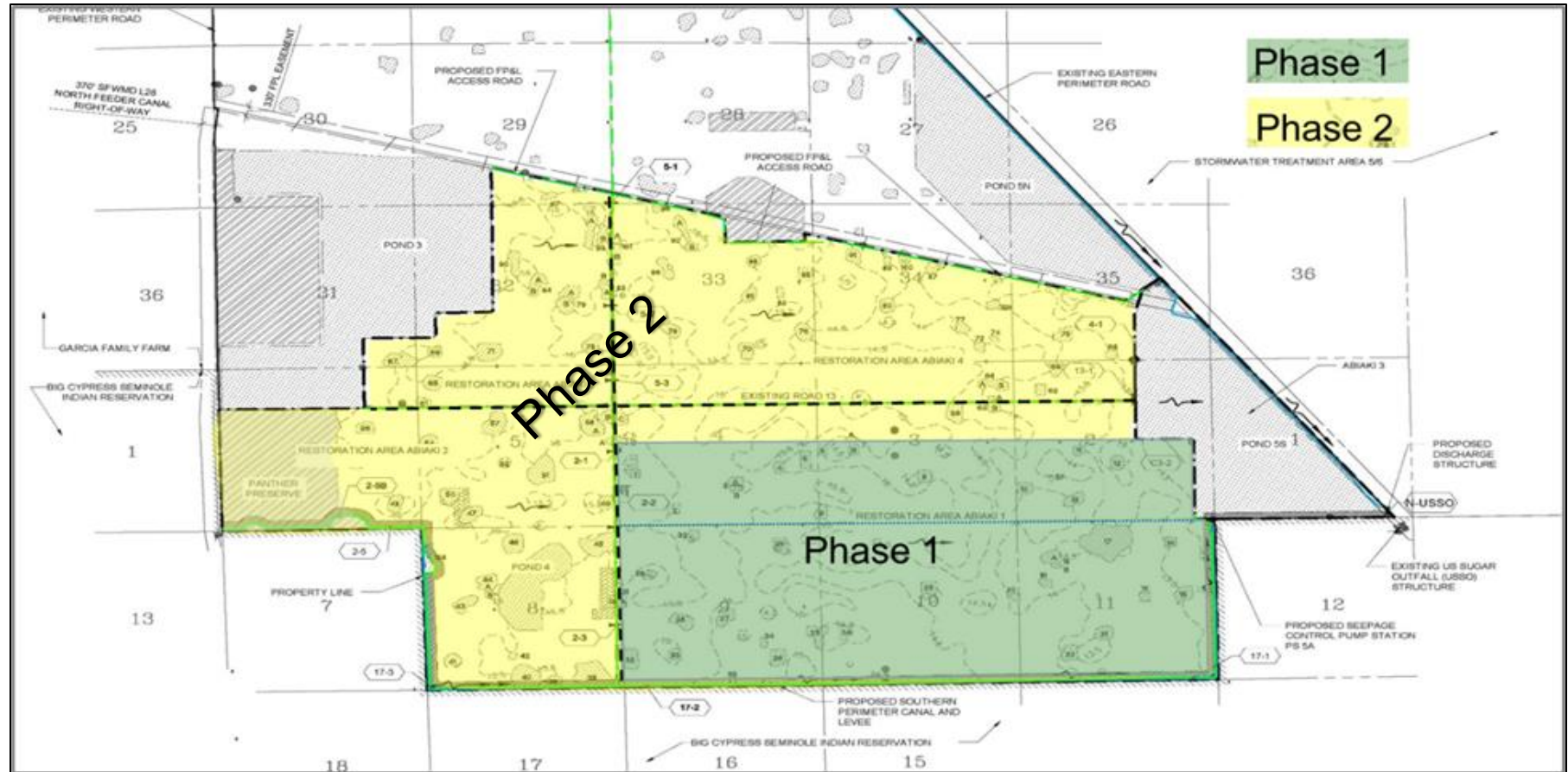




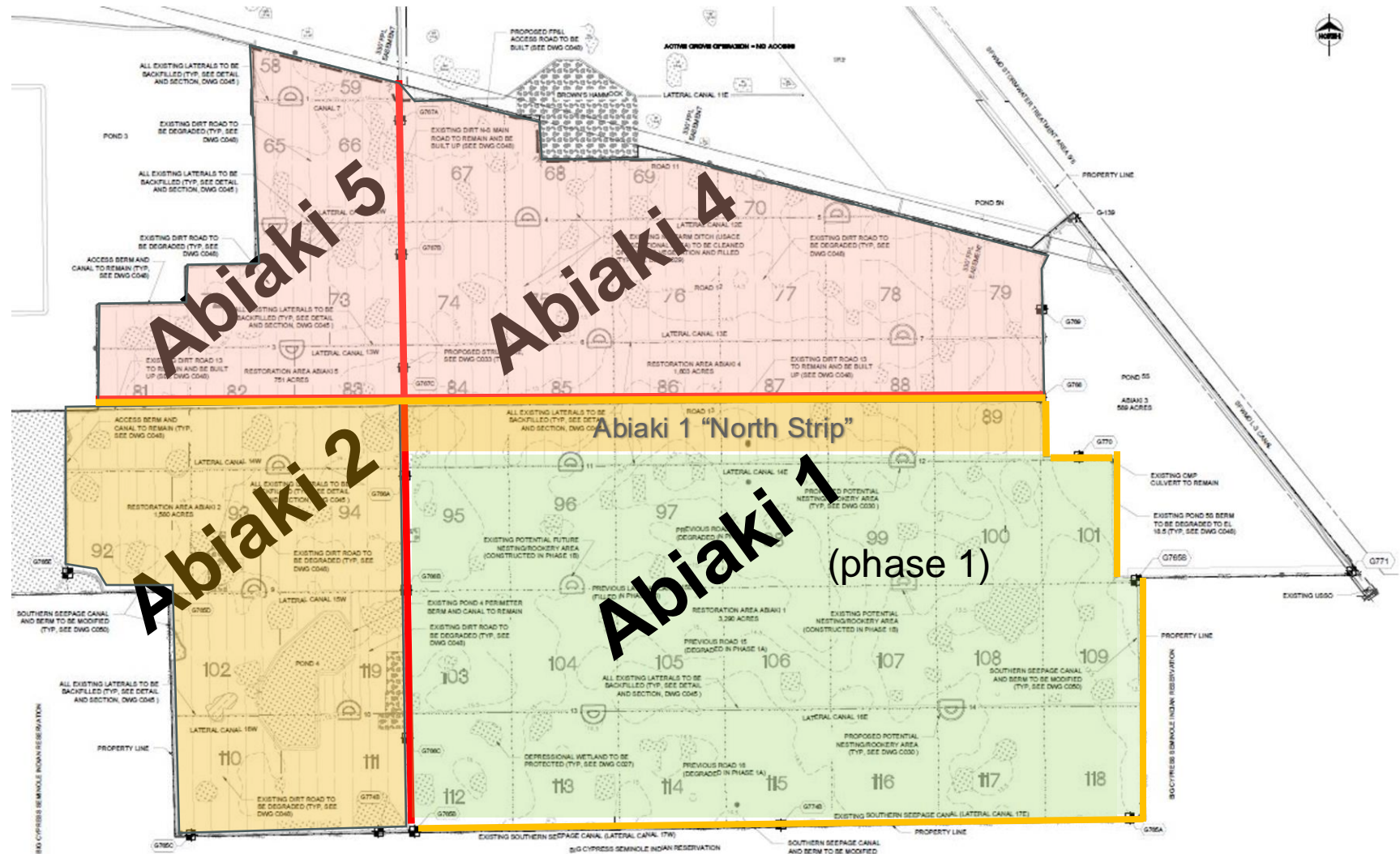
## Sam Jones Abiaki Prairie Update

# Construction Phases



Note: Phase 1 performed early restoration work in a large portion of the project but is not a standalone restoration effort. Phase 2 portion of the work completes restoration efforts.

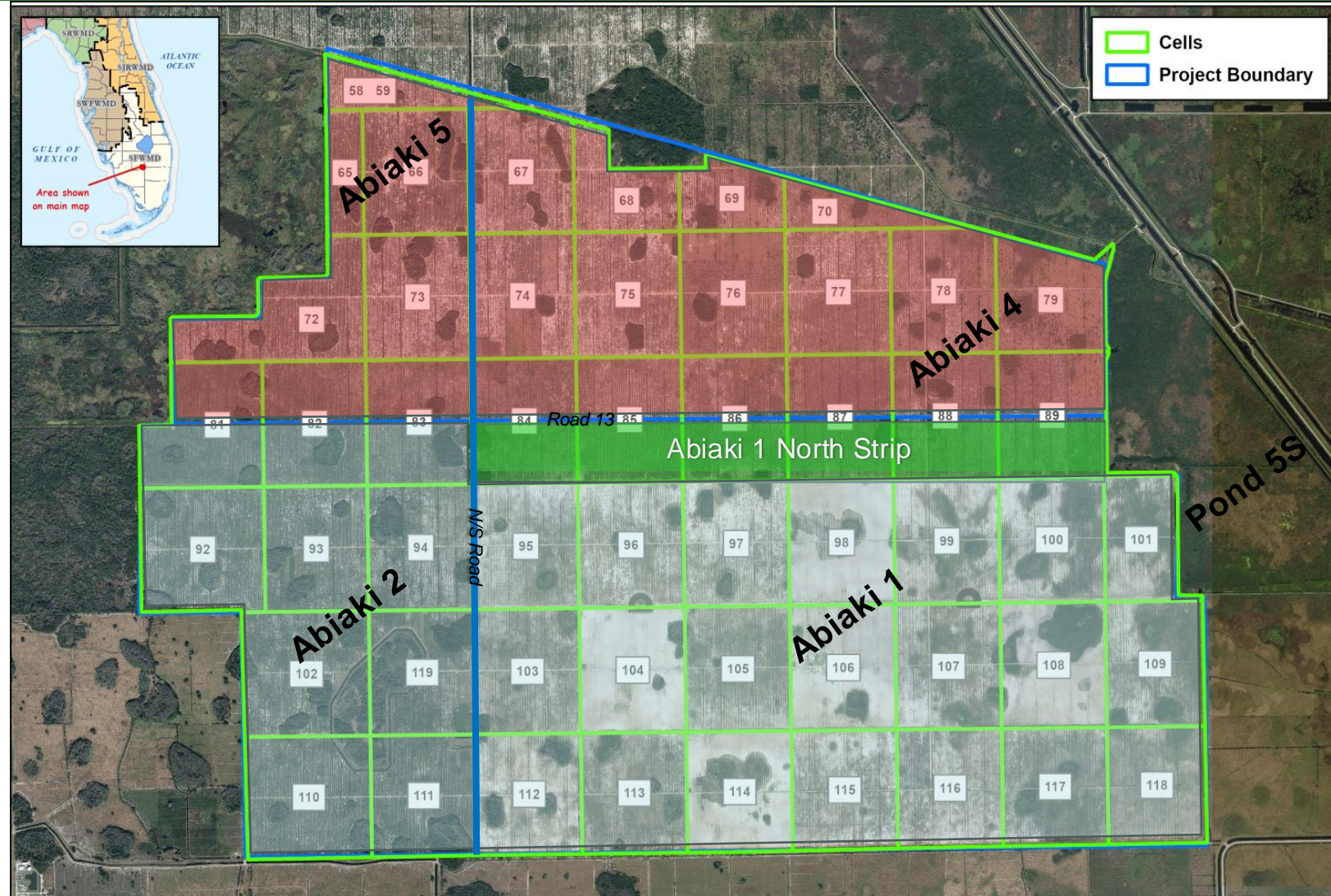
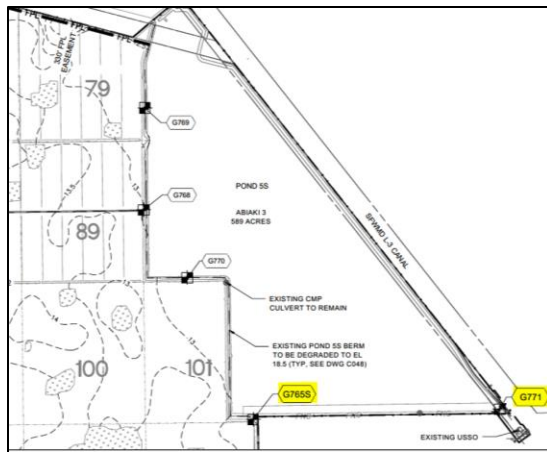






# Construction Update

- New site discharge structure G771 and Seepage Pump Station G765S are operational.
- O&M Plan for all structures is being finalized for interim period while awaiting Abiaki 4&5 construction.





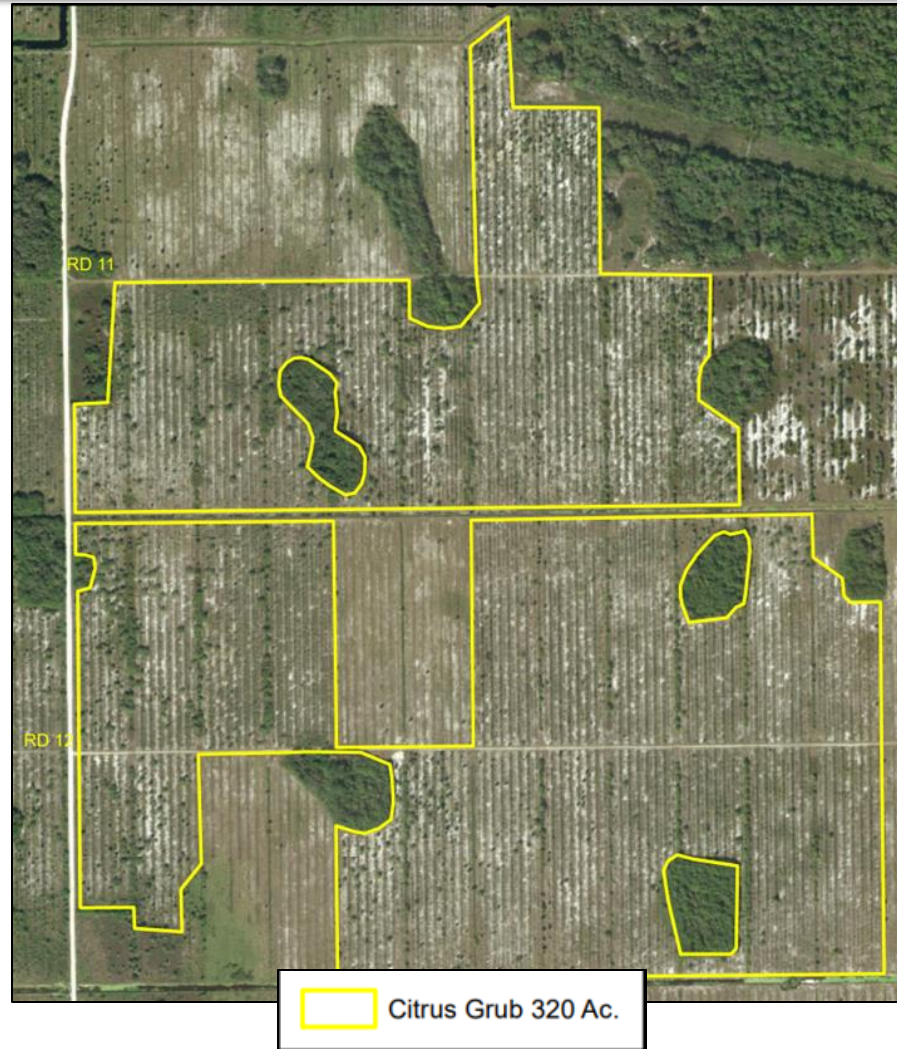
# FDEP Inspection

**FDEP conducted final inspection of constructed features Abiaki 1 and 2 in December 2024**





# Citrus Clearing Abiaki 4

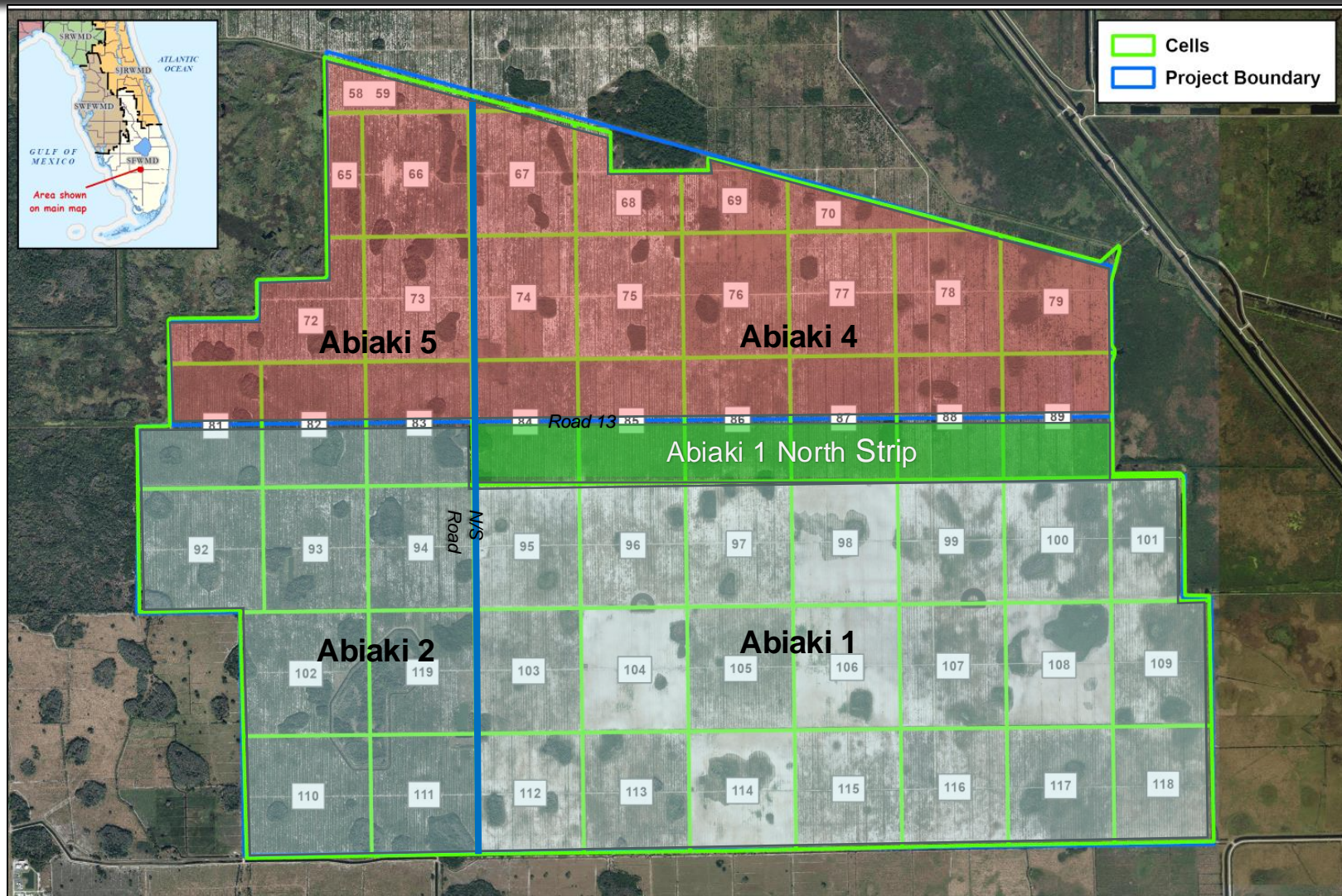




# Land Management Update

Continue in AB1,  
AB2, and North  
Strip:

- Native Plantings
- Invasive Species Treatments
- Hydrological Monitoring
- Ecological Monitoring





# Native Plantings

Contracted Planting  
Rookery Littoral Zones





# Native Plantings



In-House Planting – Rookery Islands



# Hydrologic Monitoring

## El Nino Pattern

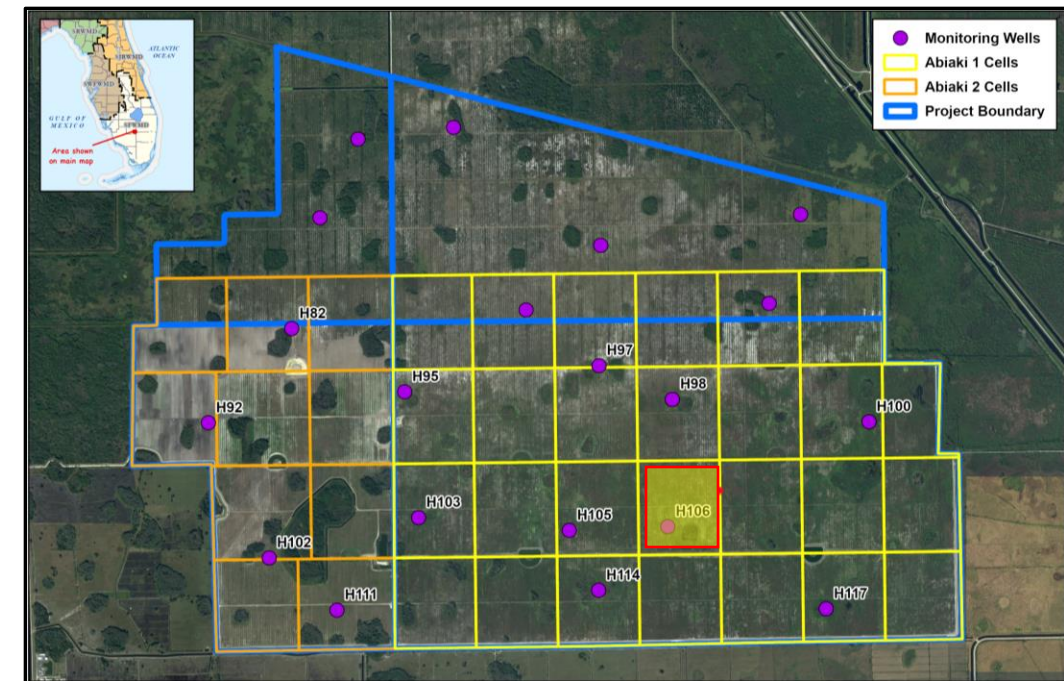
### Significant Early Spring Rain Events

**February 2023**  
**Total 0.45"**

**February 2024**  
**Total 2.93"**

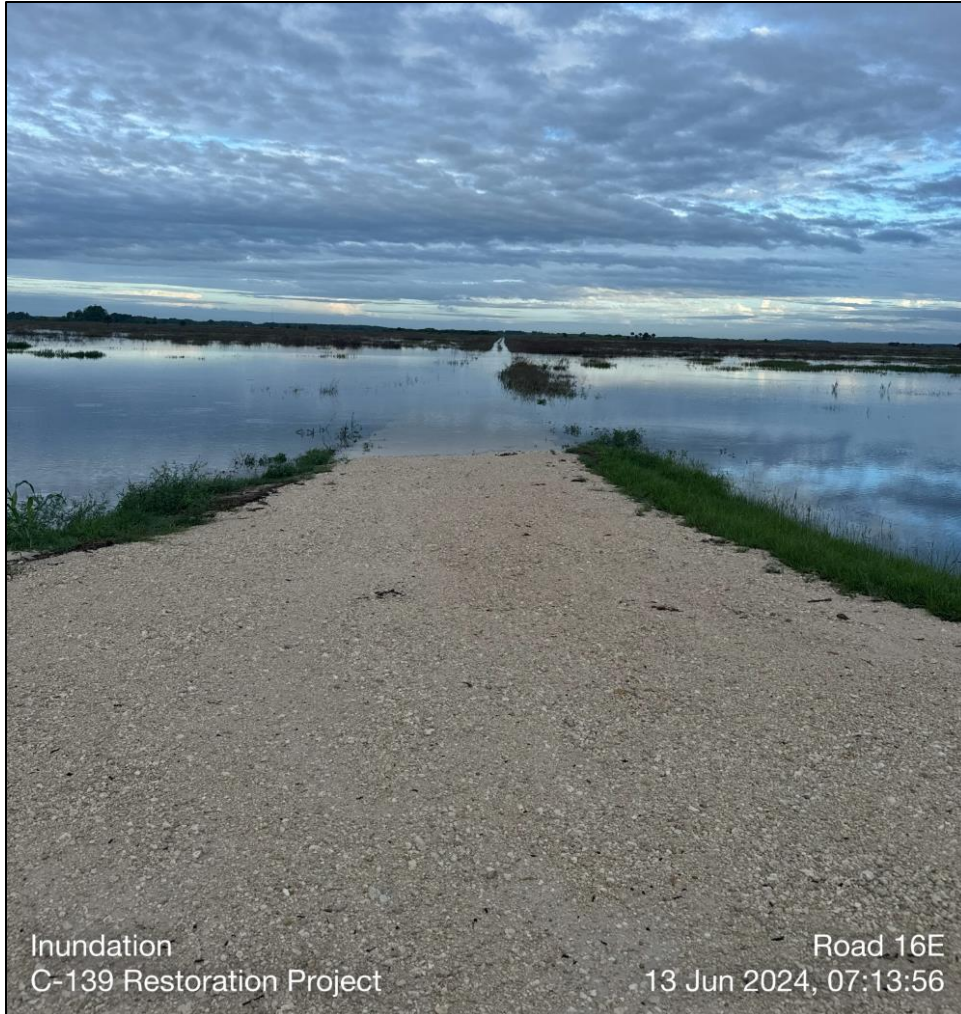
**March 2023**  
**Total 1.30"**

**March 2024**  
**Total 5.35"**





# Hydrologic Monitoring



Inundation  
C-139 Restoration Project

Road 16E  
13 Jun 2024, 07:13:56



Cell 88  
C-139 Restoration Project

Alligator  
14 Jun 2024, 08:48:03



# Hydrologic Monitoring



North Side Abiaki 1/Cell 86-87



East Side Abiaki 1/Cell 101



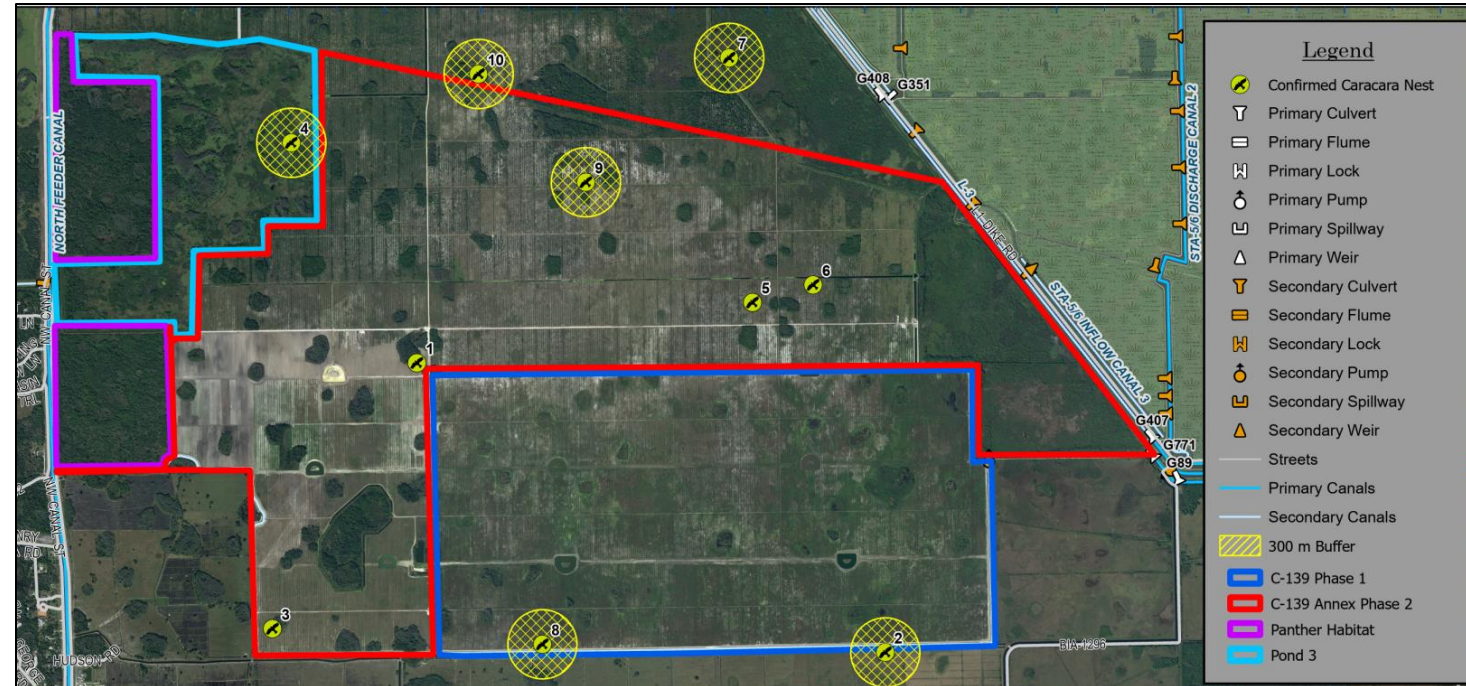
# Ecological Monitoring





# Ecological Monitoring

## Nesting Caracaras in Restored and Future Phases





# Ecological Monitoring

2024 – First winter shorebird specific survey AB1 & 2



8 Species  
(+/-)1,073 birds

08 02 2024



# Functional Unit Release

Restoration Activity	Benchmark/Percent of Units Released	
Administrative/Legal	Record Permit	5%
Construction: Level 1	Clear Citrus Groves	10%
Construction: Level 2	Level Beds	15%
Construction: Level 3	Backbone Infrastructure	25%
Biological: Level 1	Restoration Planting	20%
Biological: Level 2	Ongoing Restoration Activities	15%
Biological: Level 3	Final Permit Compliance	10%
<b>TOTAL</b>		<b>100%</b>



# Functional Unit Release

DATE	ACTIVITY DESCRIPTION	UNITS RELEASED	% FUNCTIONAL UNITS
7/28/2020	Permit Recorded	215.17	5%
4/1/2021	Partial Ph1 Construction&Biological Level 1. Partial Ph1 Construction Level 2	664.07	17%
6/1/2023	AB2 Construction Level 1. Construction Level 1&2 Cells 95, 96, 97, 103	161.46	4%
*Release request made 9/5/2024. Awaiting word from ACOE.	AB2 Construction Level 2. Biological Level 1 Cells 95, 96, 97, 103	178.21	4%
<b>TOTAL</b>		<b>1218.91</b>	<b>30%</b>

**Pending/Anticipated  
Functional Unit Release 2025**  
*(Will be based on the Monitoring Report)*

YEAR	PENDING UNITS
2025	776.21

MDLPA Needed Project Functional Units: ~**4,000**  
Abiaki Prairie Project Anticipated Functional Units: ~**4303.4**

No credit release requested in 2022

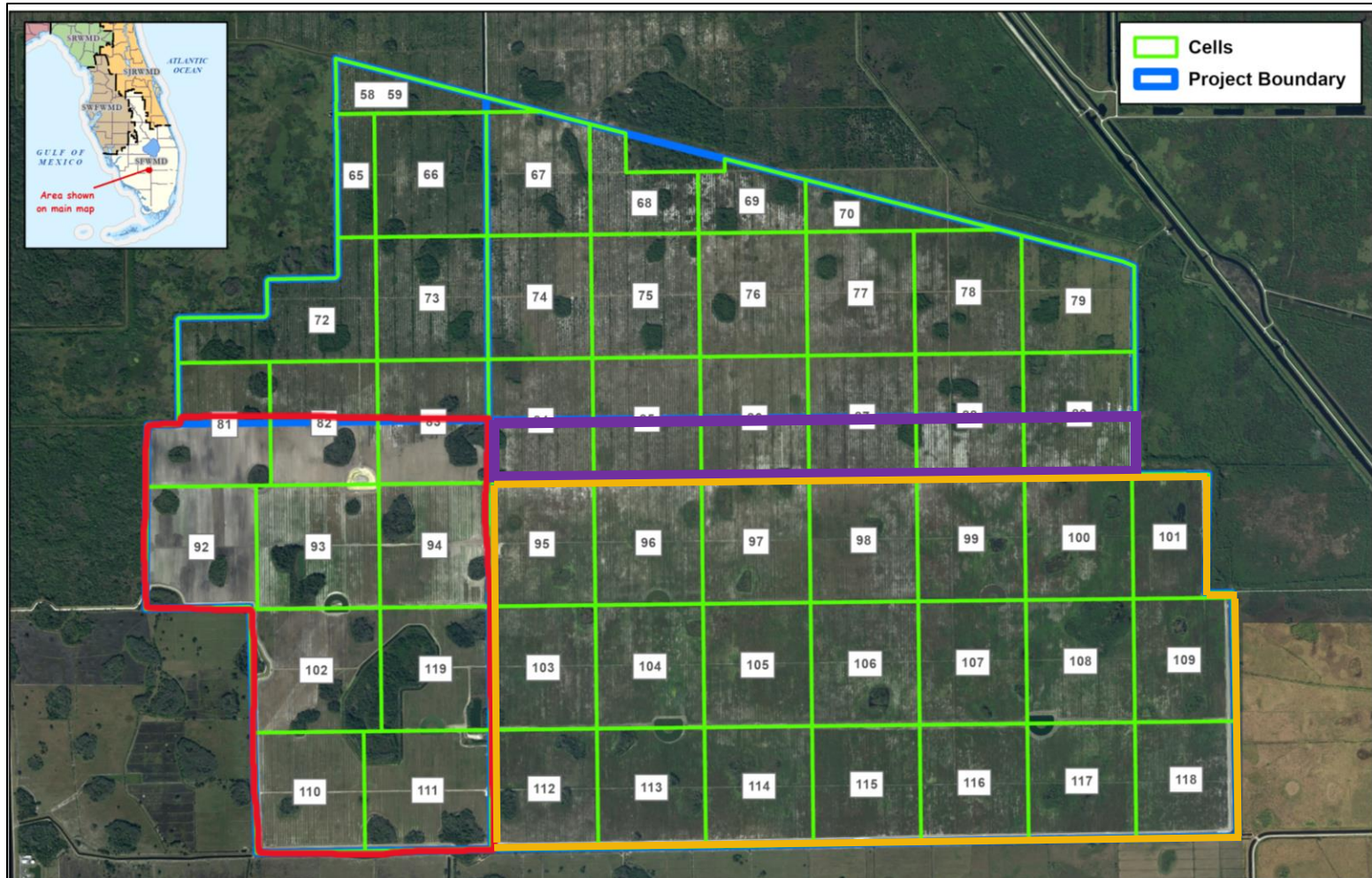


# Functional Unit Release

Construction Level 3  
Abiaki 1

Construction Level 3  
Abiaki 2

Construction Level 1-3  
North Strip





# Discussion

