

# CEPP South Contract 1 Compliance Monitoring Update

Presented January 26, 2021  
Technical Oversight Committee

*by:*

**Ken Bradshaw-USACE**

**Phone:** 904-232-1625

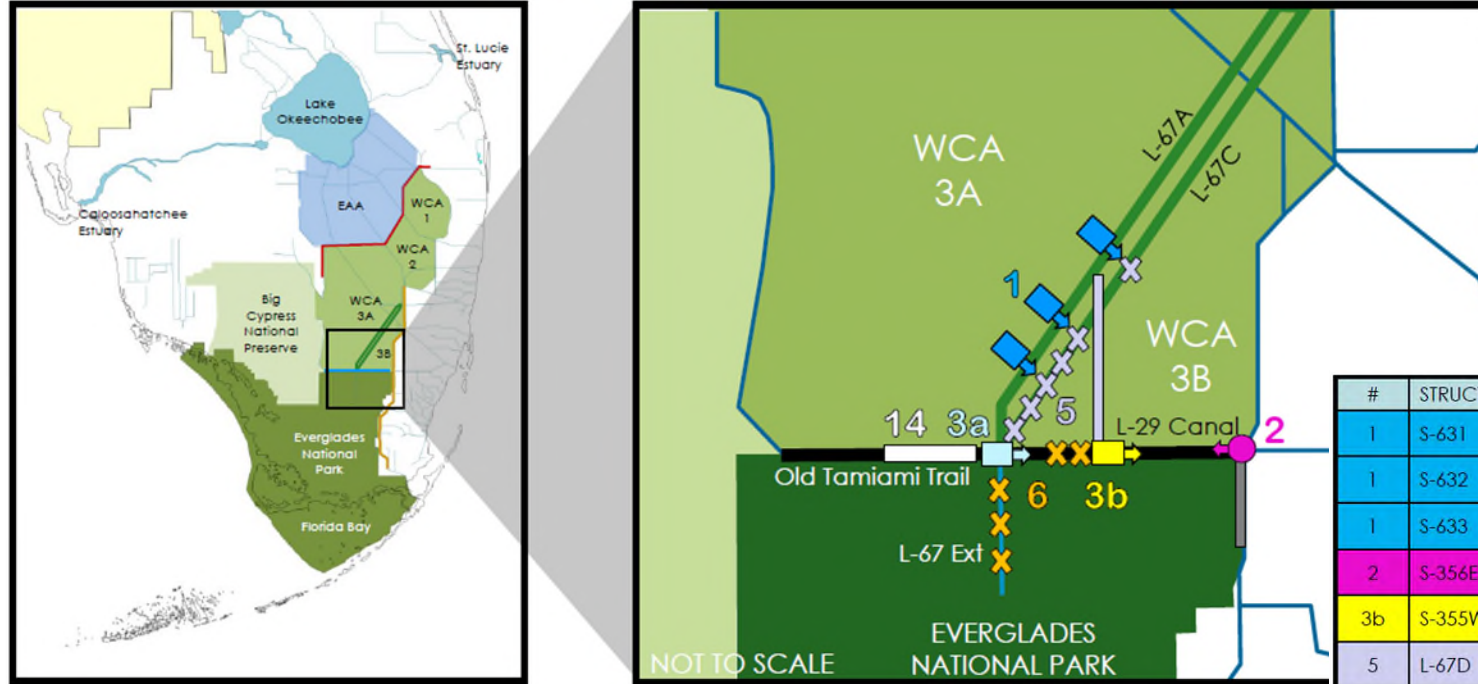
**Email:** james.k.bradshaw@usace.army.mil

# Objective

- Update on Monitoring Plan and Implementation
  - L-67A Culverts & L-67C Interim Gap (Contract 1)
  - Temporary Pumps at L-29

# CEPP South Overview

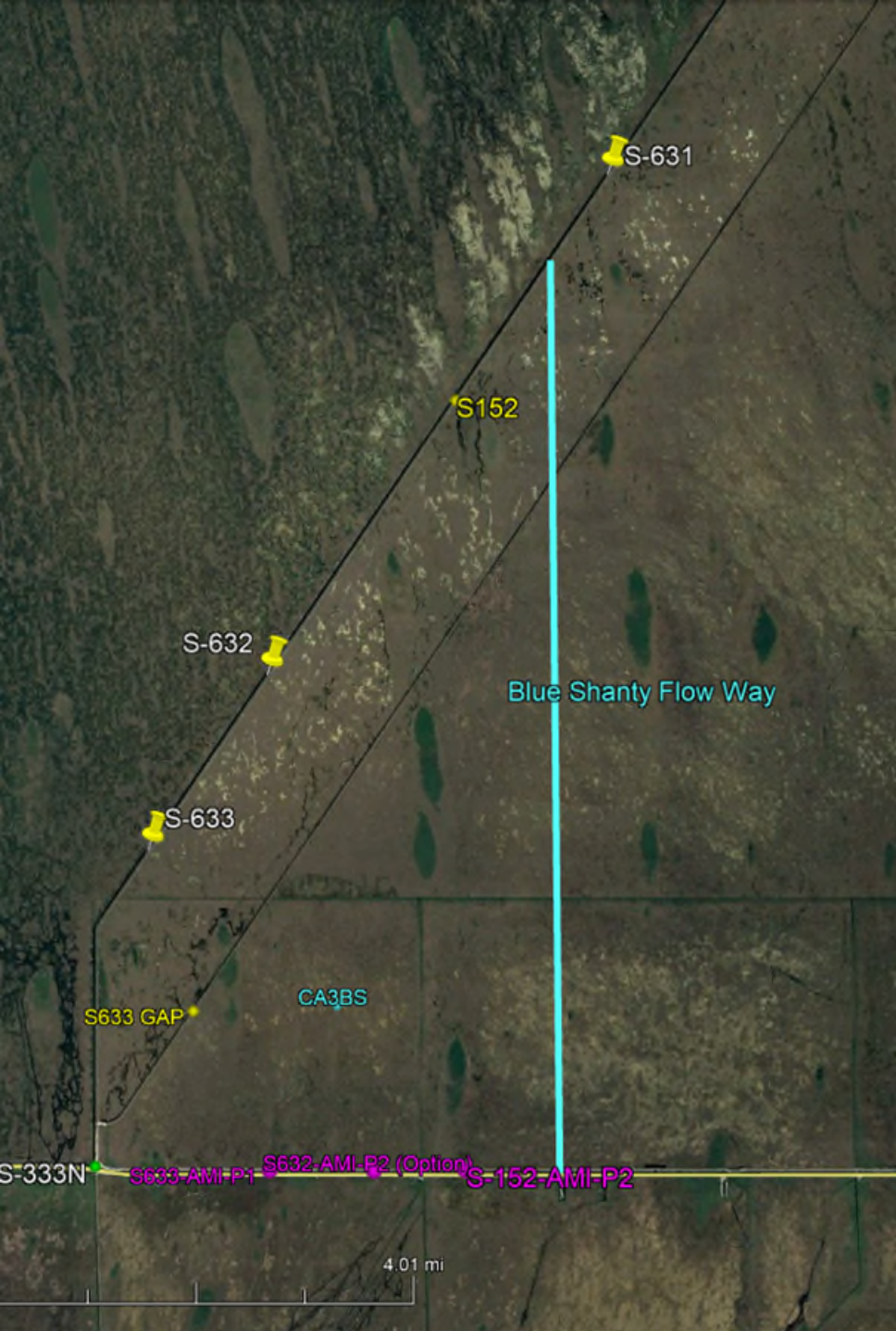
## BLUE AND GREEN LINES DISTRIBUTION AND CONVEYANCE



Contract	Award	Duration
1	2020	4 years
2	2022	4 years
3a	2018	2 years
3b	2023	2 years
5	2024	3 years
6	2025	3 years

#	STRUCTURE	STRUCTURE/FEATURE TYPE	CFS	TECHNICAL NOTES
1	S-631	Gated Culvert	500	Delivers water from WCA 3A to 3B, east of L-67D Levee
1	S-632	Gated Culvert	500	Delivers water from WCA 3A to 3B, west of L-67D Levee
1	S-633	Gated Culvert	500	Delivers water from WCA 3A to 3B, west of L-67D Levee
2	S-356E	Pump Station	1000	Provides seepage management for WCA 3B and NESRS stages
3b	S-355W	Gated Spillway	1230	Maintains water deliveries to eastern L-29 Canal
5	L-67D	Blue Shanty Levee		Levee, ~ 8.5 miles, connecting from L-67A to L-29 (6 feet high, 14-foot crest width, 3:1 side slopes)
5	L-67C	Levee Removal Gap		Gap, ~ 6000 feet (corresponding to S-631)
5	L-67C	L-67C Levee Removal		Complete removal of ~ 8 miles from New Blue Shanty Levee (L-67D)south to intersection of L-67A/L-67C; L-67C canal is not backfilled
6	L-29	Levee Removal		Removal of ~ 4.3 miles between L-67A and Blue Shanty Levee intersection with L-29 Levee
6	L-67	L-67 Extension Levee Removal and Canal Backfill)		Complete removal of ~ 5.5 miles of remaining L-67 Extension, including S-346 culvert
3a	S-333N	Gated Spillway w/new canal	1150	Delivers water from L-67A Canal to L-29 Canal; supplements existing S-333 gated spillway
14		Removal of remnants of Old Tamiami Trail roadway		Removal of ~ 6 miles of roadway west of L-67 Extension

LEGEND: Pump Gated Structure Levee Levee Removal Road Removal



# CEPP South L-67A/L-67C

- L-67A/L-67C (CEPP South Contract 1)
  - 500 cfs gated culverts (3x) in L-67A
  - 3000 ft gap in L-67C
  - Agricultural ditch backfill (~1.4 of 4.0 miles)
  - Anticipate construction to start in February
- L-29 Temporary Pumps
  - 2022/2023 (estimated)
- Water Quality Compliance Monitoring
  - Final monitoring plan to FDEP in February
  - CA3BS starts in 2021
  - S-63Xs as construction is completed
  - Temporary pumps monitoring begins once installed and operating

# Permit Compliance CEPP South L-67A/L-67C & Temporary Pumps

Station	Method	Frequency	Parameter ACODES
S631 S632 S633 S-633-AMI-P1 S-152-AMI-P2	Grab	Biweekly Recorded Flow	Total Nitrogen (TN), Total Phosphorous (TP)
	In-situ	Biweekly Recorded Flow	Dissolved Oxygen (DO), pH, Specific Conductance (SCOND), Temperature (TEMP)
CA3BS*	Grab	Monthly	TP
	In-situ	Monthly	Dissolved Oxygen (DO), pH, Specific Conductance (SCOND), Temperature (TEMP)

\*A permanent sampling platform is not planned at this time



S-632 Looking West



Questions