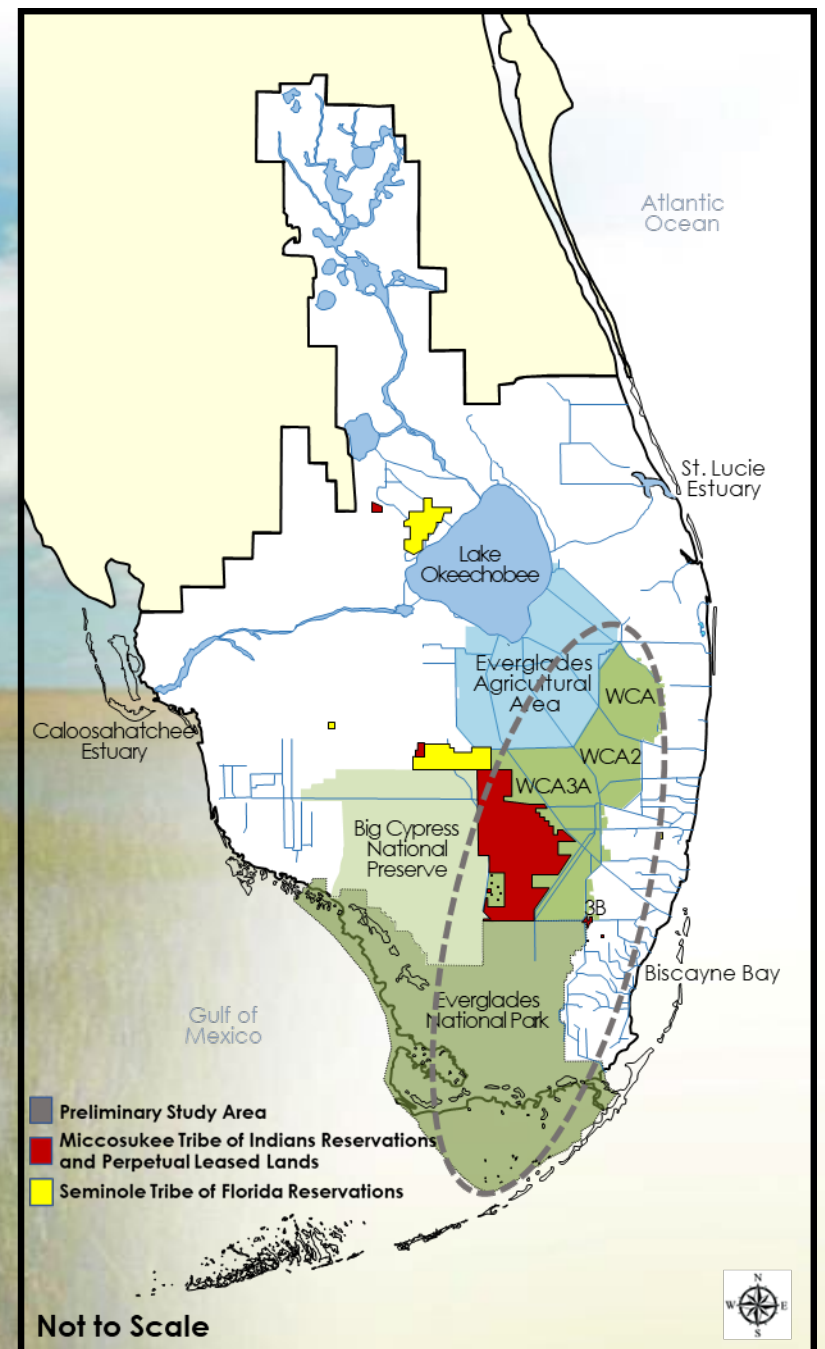


CENTRAL EVERGLADES PLANNING PROJECT (CEPP) OPERATIONAL PLAN

TECHNICAL OVERSIGHT COMMITTEE UPDATE
JUNE 27, 2023

PRESENTED BY:

KEN BRADSHAW, PHD
CHIEF, SOUTH FLORIDA SECTION
ENVIRONMENTAL BRANCH
PLANNING AND POLICY DIVISION
U.S. ARMY CORPS OF ENGINEERS (USACE)





MEETING AGENDA AND PURPOSE



AGENDA

- Central Everglades Planning Project (CEPP) Operational Plan Overview
- Project Scope
- National Environmental Policy Act (NEPA)
- Project Schedule

PURPOSE

To update the Technical Oversight Committee on development of the first increment of the CEPP Operational Plan.



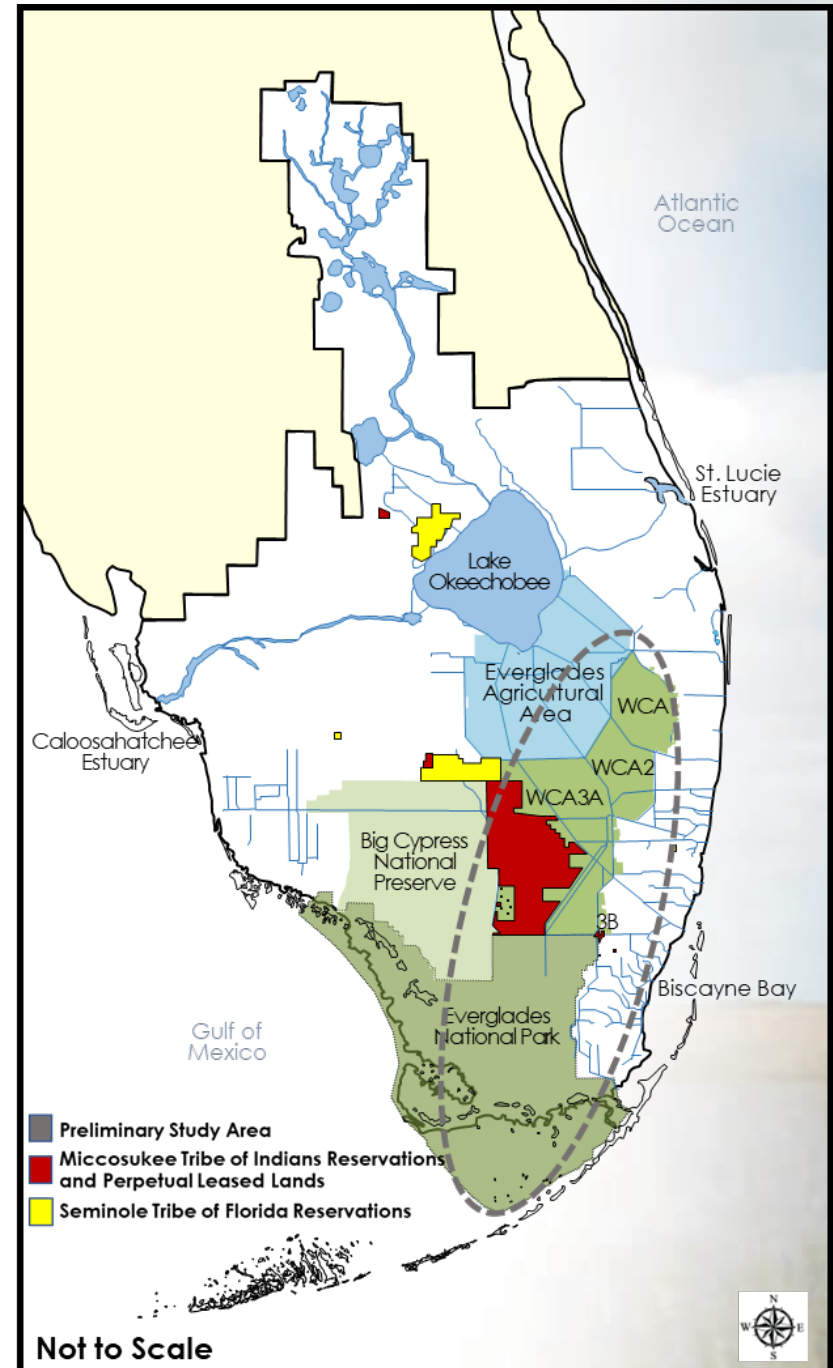
CENTRAL EVERGLADES PLANNING PROJECT (CEPP) OPERATIONAL PLAN OVERVIEW



WHAT ARE WE DOING?



- Developing operations for Central Everglades Planning Project (CEPP) infrastructure
- Producing a CEPP Water Control Plan, updating the Draft Project Operating Manual to a Preliminary Project Operating Manual, and producing a National Environmental Policy Act (NEPA) evaluation
- Not recommending any new infrastructure

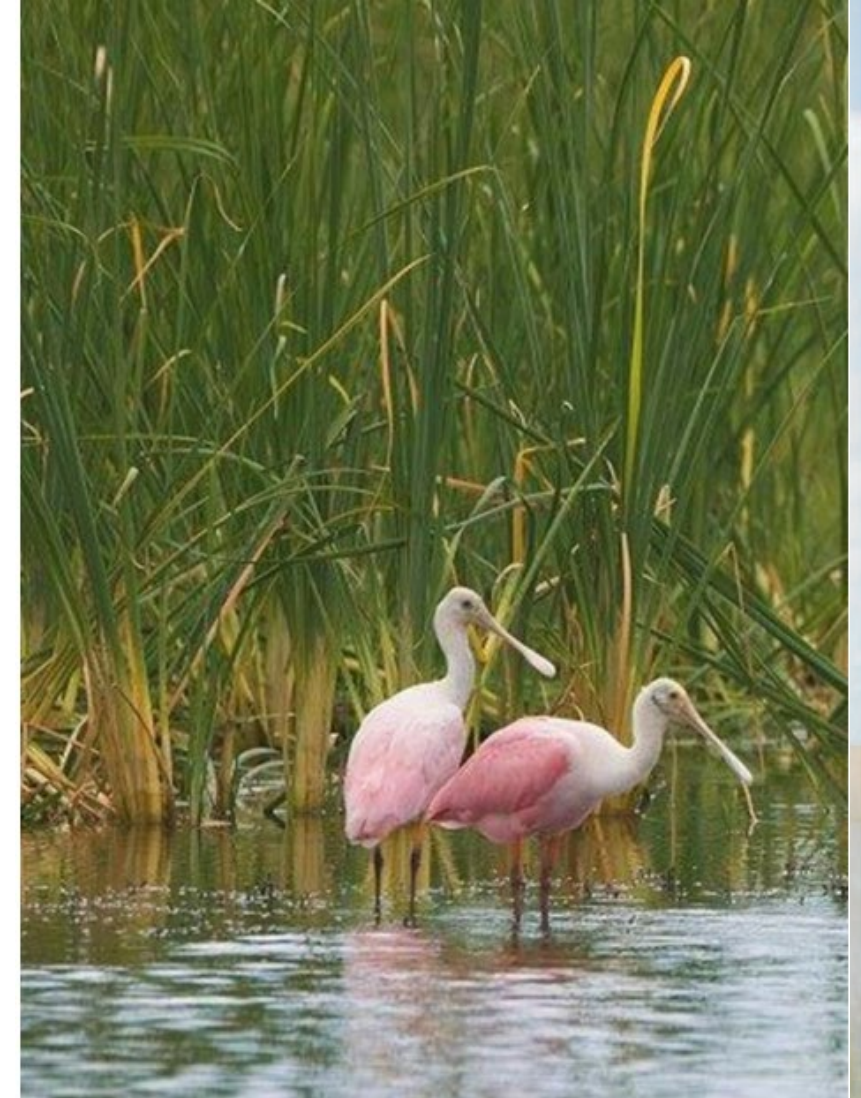




CEPP OPERATIONAL PLAN PROJECT PURPOSE



- The purpose of the CEPP Operational Plan (Phase 1) is to provide operating criteria for CEPP infrastructure that are complete or near completion to be operated with planned completion of the Tamiami Trail Next Steps Phase 2 Project.
- An update to the CEPP Operational Plan will replace the current operating plan for the Water Conservation Areas (WCAs), Everglades National Park (ENP), and South Dade Conveyance System (Combined Operational Plan (COP)).
- This update is the first phase. Future updates of the CEPP Operational Plan will be prepared as additional CEPP components are completed.

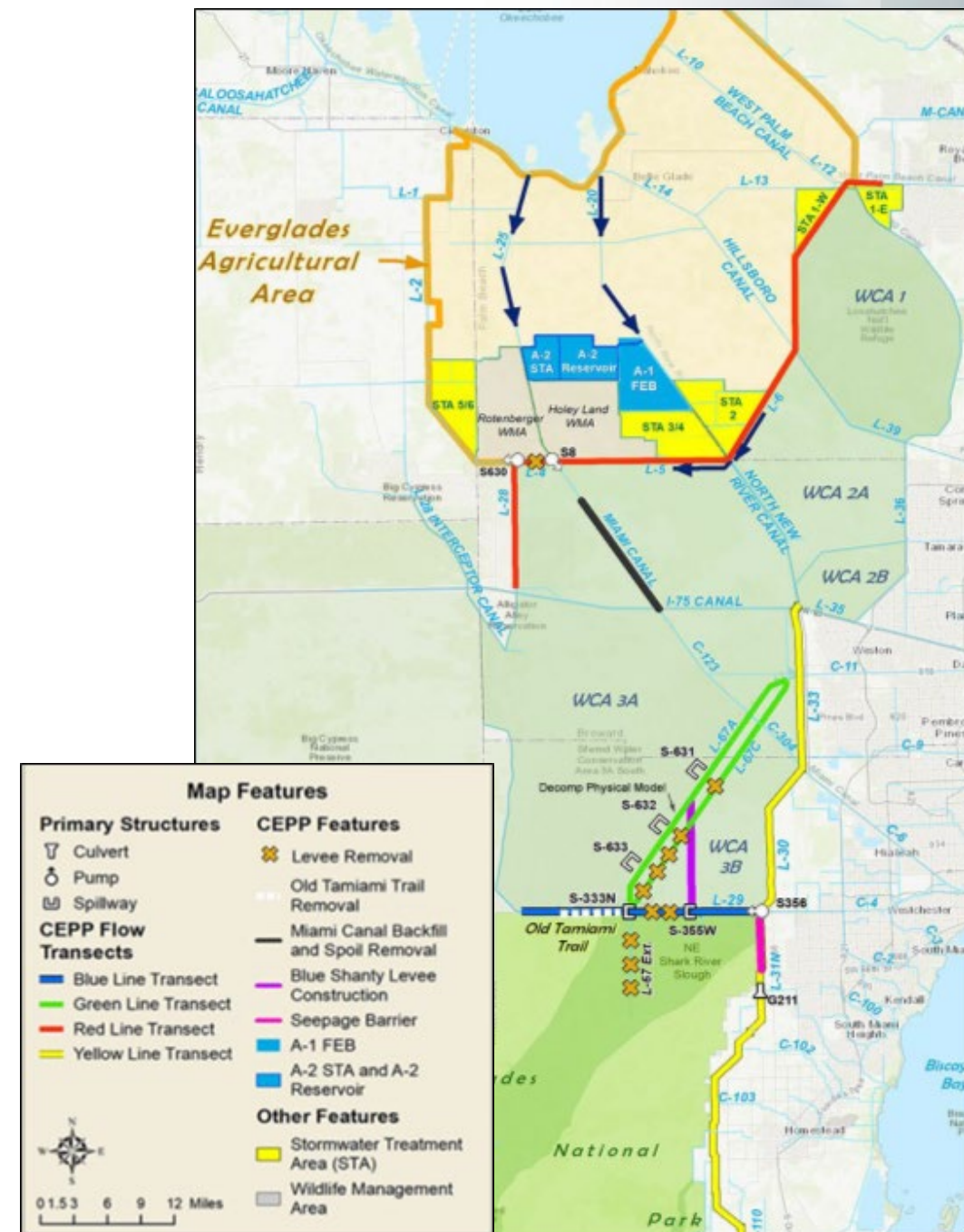


CEPP Components Overview

Project Purpose: Improve the quantity, quality, timing and distribution of water flows to the northern estuaries, WCA 3, ENP, and Florida Bay while increasing water supply for municipal, industrial, and agricultural users.

Four Phases:

- **CEPP South** removes water flow barriers in the southern portion of the project's footprint to flow more water south.
- **CEPP North** provides inflow facilities needed to restore northern WCA 3A and move additional water south to the Everglades.
- **CEPP New Water** puts protections in place to prevent seepage and reduce flood risk to the east of ENP, thereby allowing additional existing water to flow south of Tamiami Trail.
- **CEPP EAA** reservoir and Stormwater Treatment Area (STA) moves new water south, stores it, and treats it before it goes to the Everglades.



CEPP PHASED IMPLEMENTATION

CURRENT OPERATIONS

- 2014 CEPP Project Implementation Report and Environmental Impact Statement (PIR/EIS) Draft Project Operating Manual (DPOM)
- 2020 CEPP South EA DPOM
- 2020 Combined Operational Plan (COP)

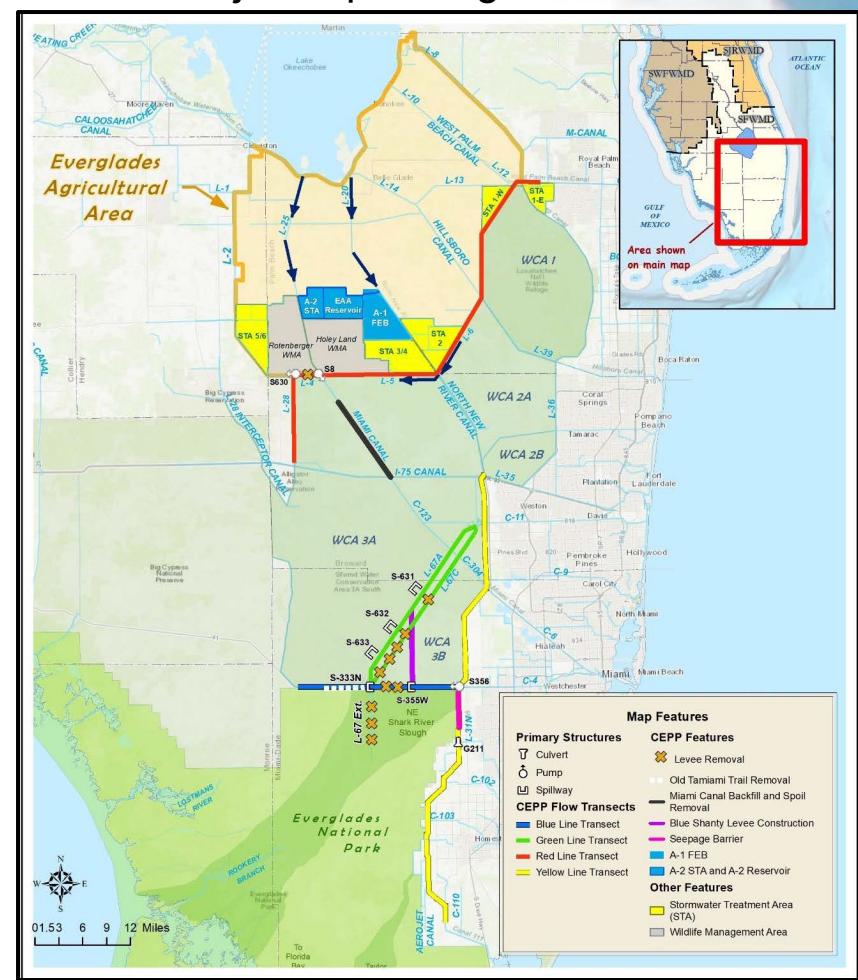
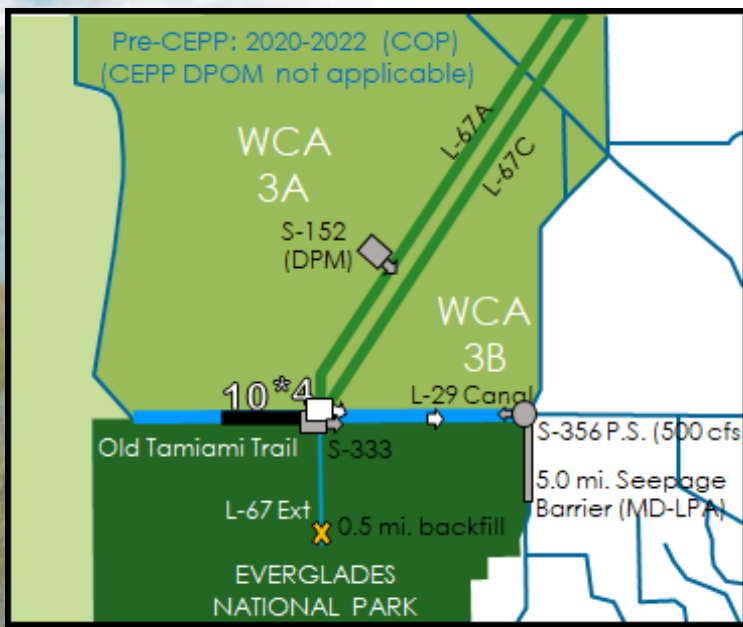
FUTURE OPERATIONS

2030+: Full CEPP Build-Out
Project Operating Manual



CONSTRUCTION & INTERIM OPERATIONS

Develop operating plans for CEPP infrastructure to incrementally progress towards CEPP benefits

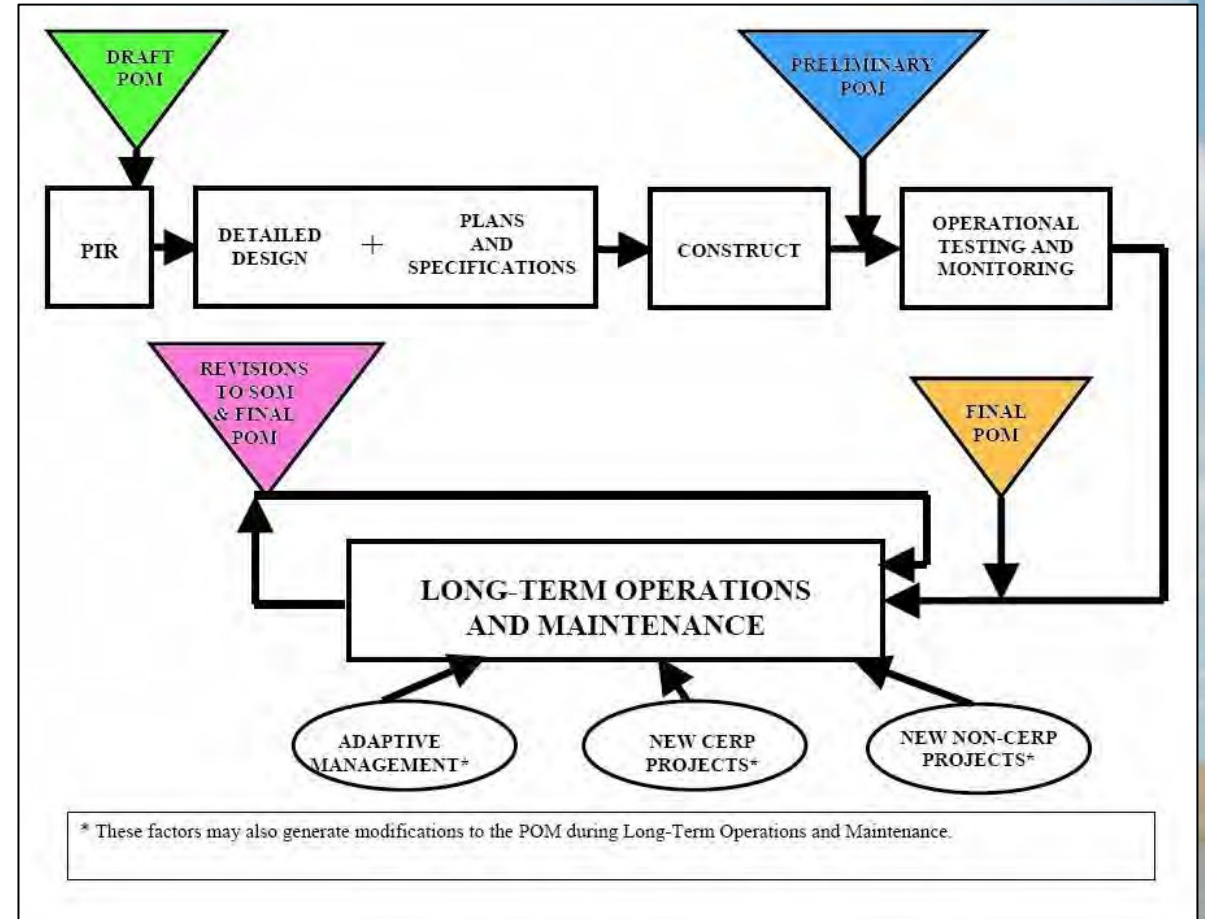




DEVELOPING OPERATING CRITERIA



- **CEPP Operational Plan Products**
 - Updating the Draft POM to a Preliminary POM
 - CEPP Water Control Plan
 - NEPA Document
- **Project Operating Manuals (POMs)** describe operating criteria for Comprehensive Everglades Restoration Plan (CERP) projects.
- **Water Control Plans** provide day-to-day operational criteria for water managers for features that are available at the time of implementation.
- **NEPA Documents** describe the impact of a proposed action on its surrounding environment.



Phasing of the POM



CEPP OPERATIONAL PLAN SCOPE



SCOPE



First Increment of Central Everglades Planning Project (CEPP) Operations:

- Tamiami Trail Next Steps Phase 2 (opportunity to remove 8.5 feet L-29 constraint)
- Take advantage of increased water budget from Lake Okeechobee System Operation Manual (LOSOM)
- Incorporate lessons learned from the Combined Operational Plan (COP)
- S-12 Operations: Evaluate the transition to conditions-based assessment
- Water Conservation Area 2 (WCA-2A) and WCA-3A Regulation Schedule Updates
- Targeted improvements to the Tamiami Trail Flow Formula with existing/pending infrastructure for inflows to Everglades National Park (ENP)
- Comprehensive Everglades Restoration Plan (CERP)/Non-CERP features constructed by 2027 (details on subsequent slides)

Additional increments to follow.



PROJECT OBJECTIVES



Maintain the purpose and achieve the benefits outlined in the 2014 CEPP PIR/EIS and the 2020 EAA Reservoir EIS, consistent with CERP objectives

CERP Objective	CEPP Objective
Improve habitat and functional quality	Restore seasonal hydroperiods and freshwater distribution to support a natural mosaic of wetland and upland habitat in the Everglades System
	Improve sheetflow patterns and surface water depths and durations in the Everglades system in order to reduce soil subsidence, the frequency of damaging peat fires, the decline of tree islands, and saltwater intrusion
	Reduce high volume discharges from Lake Okeechobee to improve the quality of oyster and submerged aquatic vegetation (SAV) habitat in the northern estuaries
Improve native plant and animal species abundance and diversity	Reduce water loss out of the natural system to promote appropriate dry season recession rates for wildlife utilization
	Restore more natural water level responses to rainfall to promote plant and animal diversity and habitat function



PROJECT OBJECTIVES



Maintain the purpose and achieve the benefits outlined in the 2014 CEPP PIR/EIS and the 2020 EAA Reservoir EIS, consistent with CEPP objectives

CERP Objective	CEPP Objective
Increase availability of fresh water (agricultural/municipal & industrial)	Increase availability of water supply
Provide recreational and navigation opportunities	Provide recreational opportunities
Protect cultural and archeological resources and values	Protect cultural and archeological resources and values



PROJECT CONSTRAINTS



- Maintain the authorized purposes of the Central and Southern (C&SF) Project of flood risk management, regional water supply for agricultural and urban areas, prevention of saltwater intrusion, preservation of ENP, water supply to ENP, preservation of fish and wildlife resources, recreation, navigation and ecosystem restoration.
- Comply with Savings Clause
 - Avoid reduction in the existing level of service for flood risk management caused by plan implementation
 - Provide replacement sources of water of comparable quantity and quality for existing legal sources that could experience water supply reductions caused by plan implementation
- Meet applicable Water Quality Standards
- L-29 Canal maximum operating stage limit of 9.7 feet, National Geodetic Vertical Datum (NGVD) of 1929.



NEPA AND PLANNING PROCESS



NEPA GOALS




- NEPA is a federal law requiring federal agencies to consider the environmental impacts of a proposed project that are:
 - Major federal actions that may have a significant affect on the quality of the human environment
- Solicit and consider public views on proposals
- Consult with Tribal, state, and local governments concerning plans
- Provide agencies with a mechanism to coordinate overlapping, jurisdictional responsibilities



NEPA



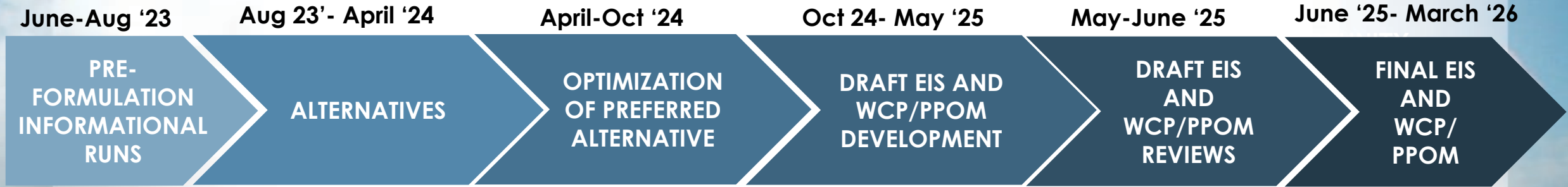
- Scoping Comment Period: April 12 to May 15, 2023
- Corps & SFWMD met May 17, 2023 to begin setting scope based on feedback
- Biweekly Team meetings May/June 2023
- Upcoming PDT June 29, 2023
 - [CEPP Operational Plan Website](#)
 - Email: melissa.a.nasuti@usace.army.mil



CENTRAL EVERGLADES PLANNING PROJECT (CEPP) OPERATIONAL PLAN SCHEDULE



SCHEDULE OVERVIEW



ACTIVITIES

- Educational model runs to test various operational concepts
- Identify where system modifications are needed to inform alternative formulation
- Helps to identify solution space for alternatives

- Alternatives comprised of combinable operational concepts to improve the ecology within major study areas
- Informed by results of informational runs, COP Biennial Report, and feedback from Tribes, PDT, and public
- Selection of Preferred Alternative

- Optimization goals informed by feedback from Tribes, PDT, and public
- Forward-looking sensitivity run on optimized preferred alternative to ensure compatibility for future iterations of CEPP Operations

- Draft NEPA
- WCP/PPOM including regulation schedules and operational guidance
- ESA consultation and Biological Assessment

- NEPA public, agency, and tribal review and comment
- Agency Technical Review
- Draft FWS Biological Opinion

- Final EIS and WCP/PPOM
- Final FWS Biological Opinion
- NEPA Tribal, PDT, and public review of Final EIS and WCP/PPOM
- Corps South Atlantic Division review and approval of Record of Decision

WE ARE HIRING!

Join the Jacksonville District Team

Seeking to fill multiple positions:

Biologist, Physical Scientist, Program
Analyst, Engineers, Geologist, Chemist,
Landscape Architect and many more.

Scan the QR Code



Or visit

www.saj.usace.army.mil/NowHiring