

Sam Jones – Abiaki Prairie Restoration



**LBMC Meeting
March 16, 2023**

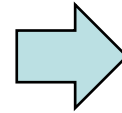
Presenter

Karyn Allman, Lead Scientist, Land Stewardship

Project Overview

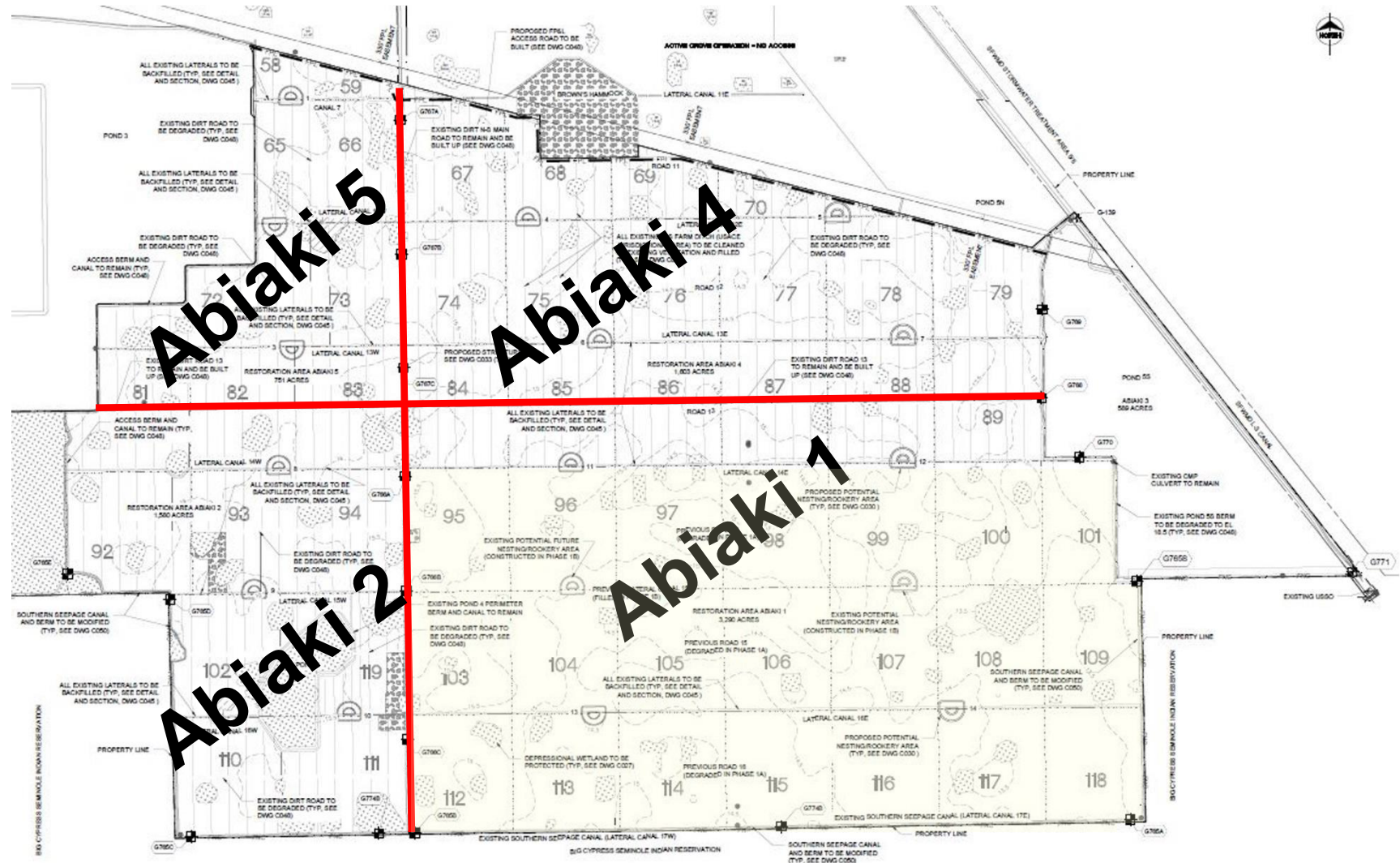


Sam Jones – Abiaki Prairie Project

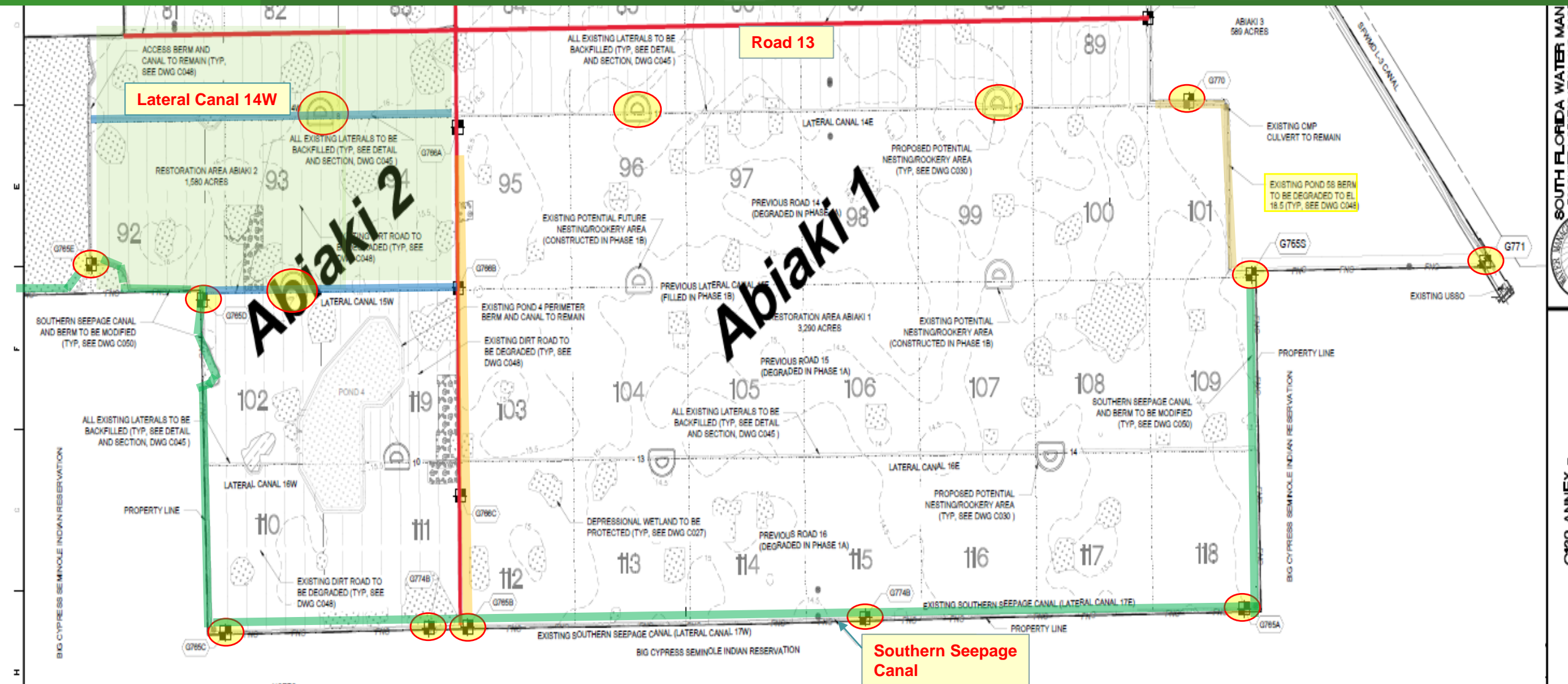




Construction Update

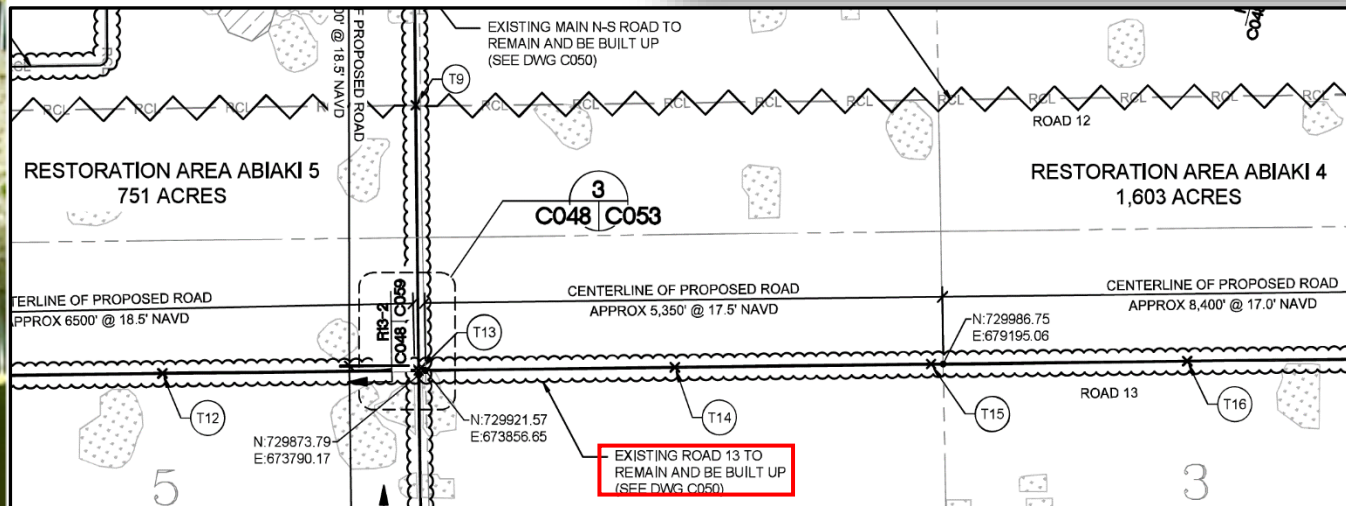
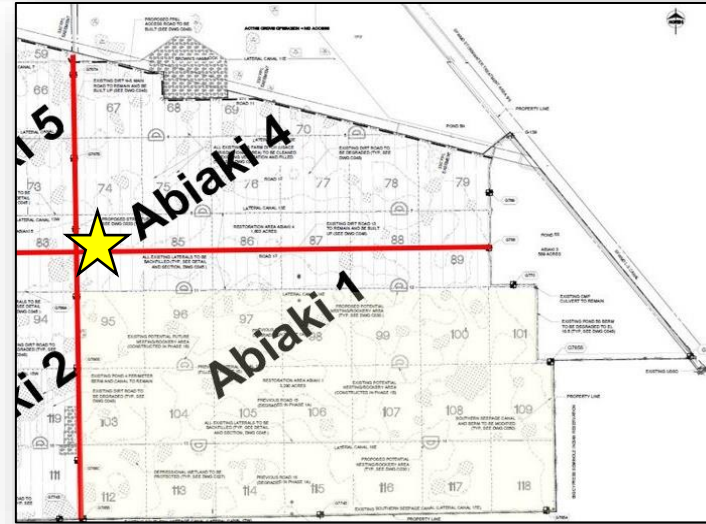


Construction Status

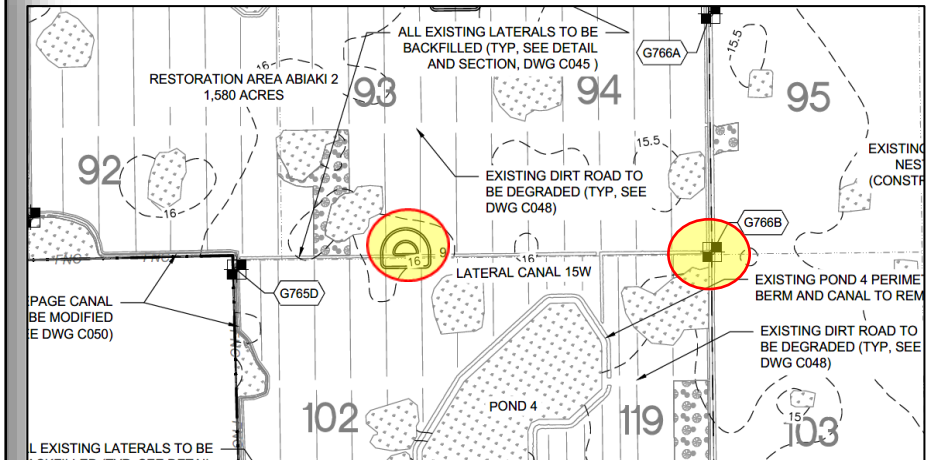
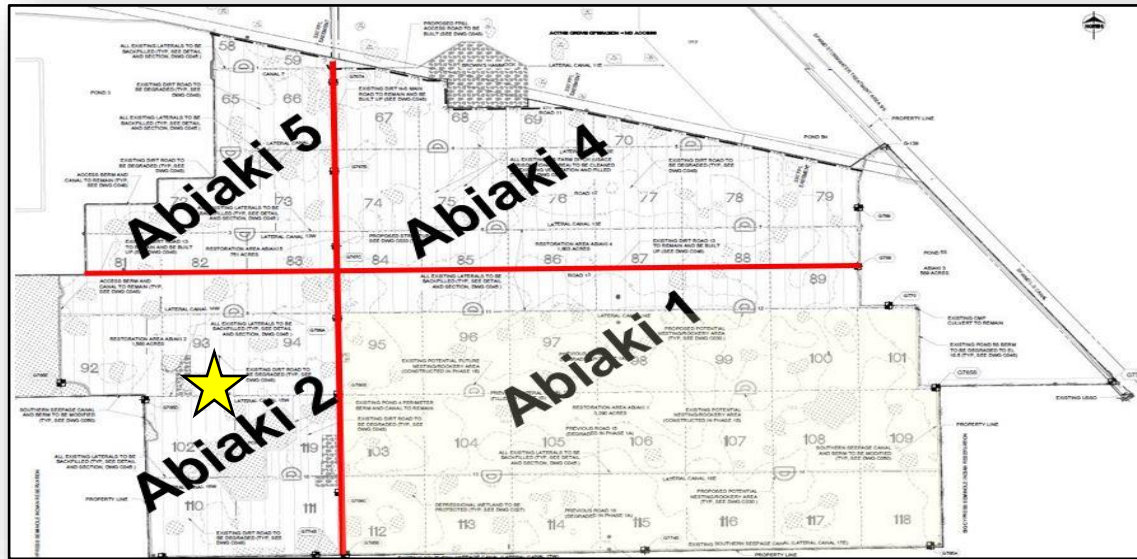


Construction Progress

Elevating Road 13



Construction Progress



Rookery 9



G766B – west side of N/S Rd



G766B – east side of N/S Rd

Construction Progress

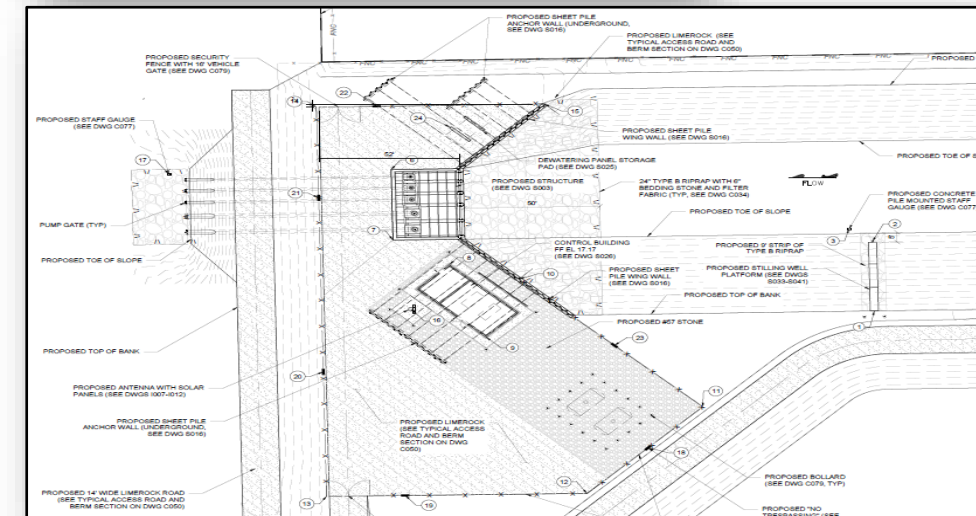
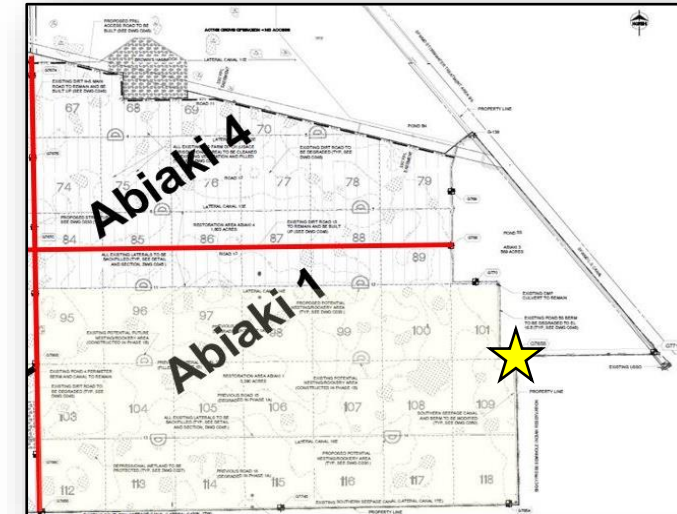
Southern Seepage Berm



Construction of 5 structures to manage water levels continue

Cut-Off Wall
C-139 Restoration Project

G765S
July 2022





Land Management Update

Native Vegetation

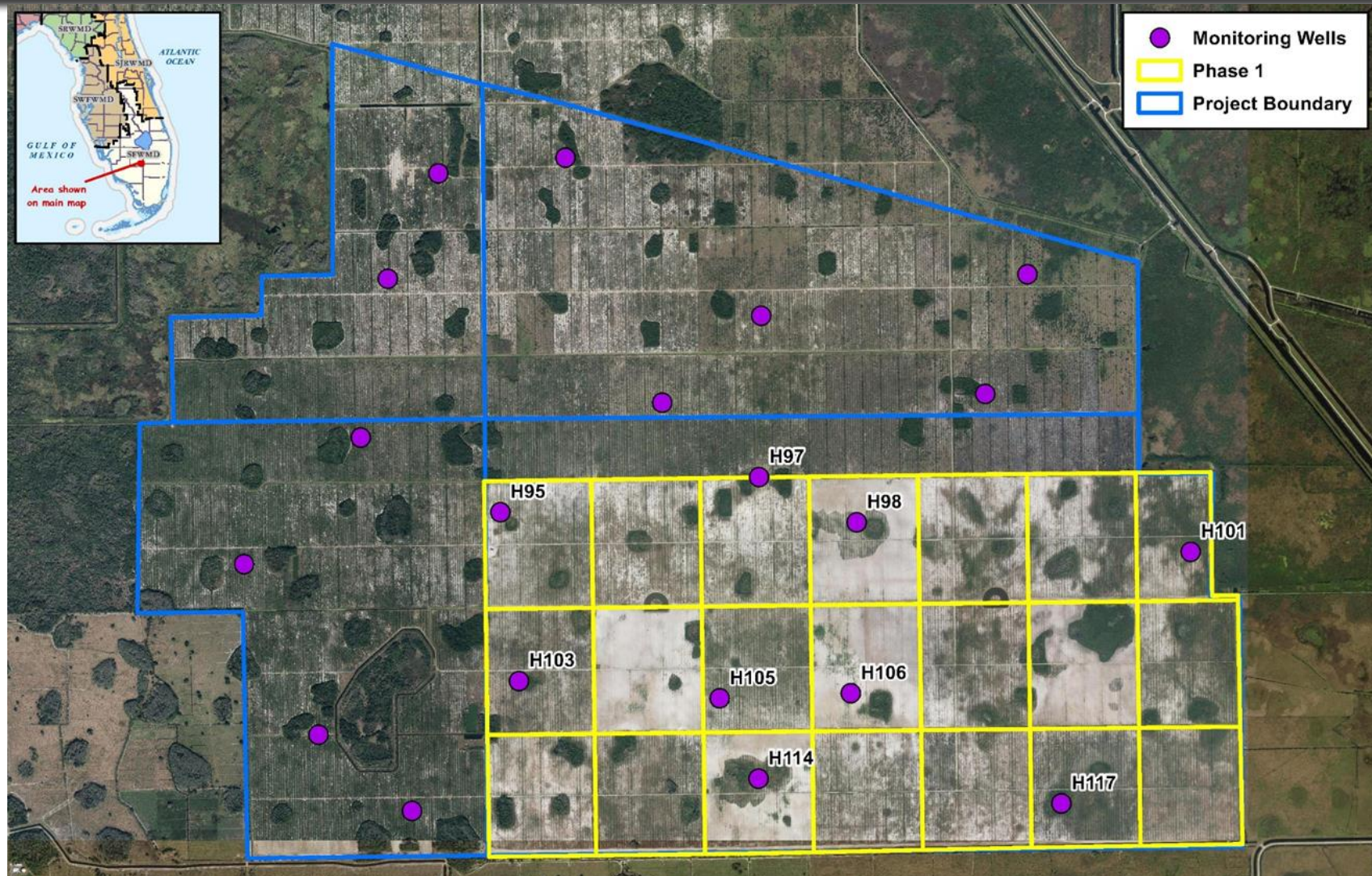
- Abiaki 1 vegetation transect monitoring completed
- Maidencane plantings in Abiaki 2 – approx. 350 acres planned this winter
- Approx. 40-50 acres in Abiaki 2 planted with native seeds
- Invasive vegetation treatments Abiaki 1, 2, and 4 – to continue this spring



Tractor pulling a grasslander

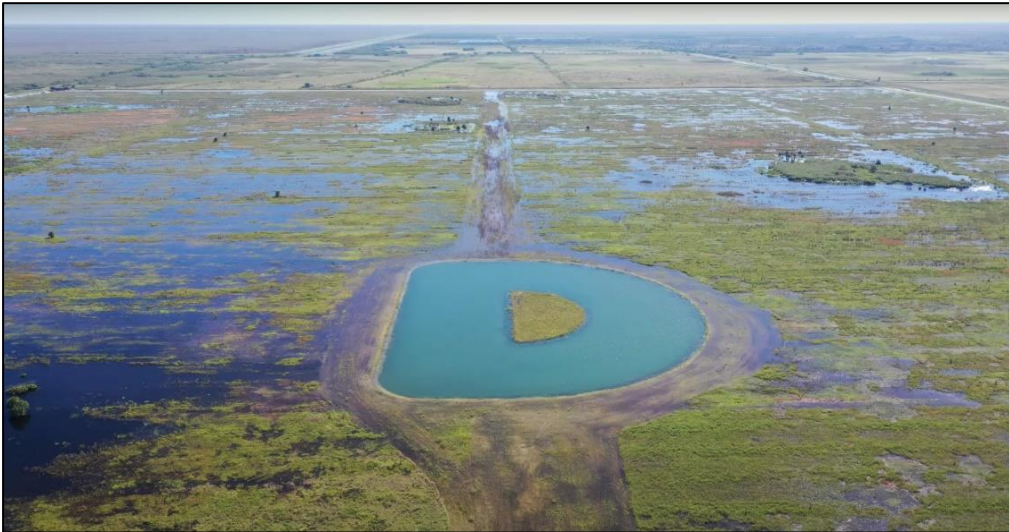


Hydrology



Hydrology

- Hurricane Ian
 - Drone photos from Sept 30th – two days post storm



Rookery in southern Abiaki 1

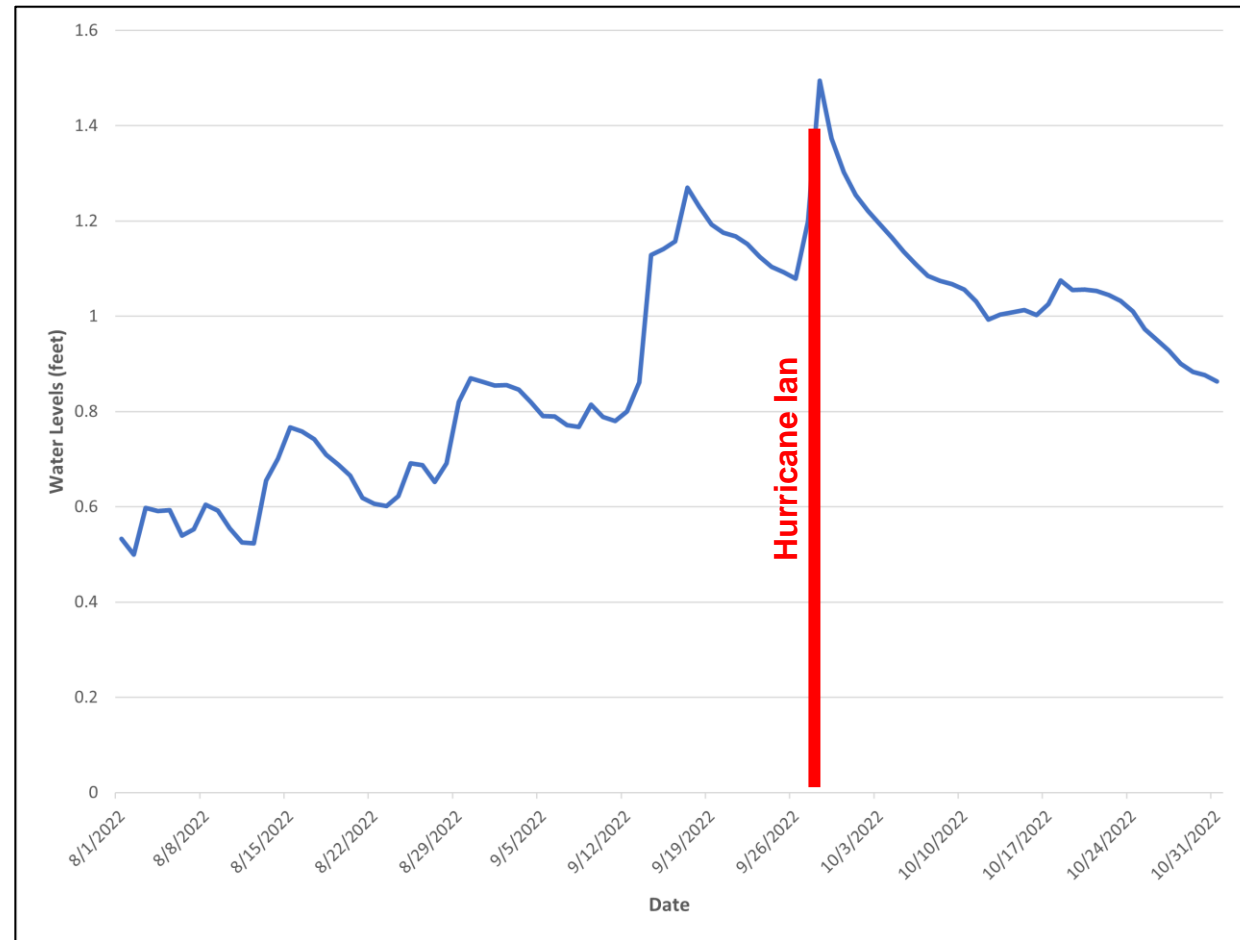


SW corner - Abiaki 2

Hydrology



Monitoring Well H114



Wildlife Usage

Three new species of birds documented using the site during 2022 monitoring:
American avocet, American coot, and American widgeon

- An abundance of Wilson's snipe observed this year
- Each of these species are wetland dependent



Avocets foraging in Abiaki 2




Large group of greater yellow legs in Abiaki 1



Functional Unit Releases

Functional Unit Disbursement Criteria



Restoration Activity	Benchmark/Percent of Units Released	
Administrative/Legal	Record Permit	5%
Construction: Level 1	Clear Citrus Groves	10%
Construction: Level 2	Level Beds	15%
Construction: Level 3	Backbone Infrastructure	25%
Biological: Level 1	Restoration Planting	20%
Biological: Level 2	Ongoing Restoration Activities	15%
Biological: Level 3	Final Permit Compliance	10%
TOTAL		100%

Functional Unit Release

MDLPA Needed Project Functional Units: ~**4,000**
 Abiaki Prairie Project Anticipated Functional Units: ~**4303.4**

CREDITS RELEASED AS OF 2021*			
Date	Activity Description	Units Released	% of FUs
7/28/2020	Permit Recorded (5%)	215.17	5%
4/1/2021	Partial Phase I - Construction (Level 1)	147.57	4%
4/1/2021	Partial Phase I - Construction (Level 2)	221.36	6%
4/1/2021	Partial Phase I - Biological (Level 1)	295.14	7%
TOTAL		879.24	22%


*No credit release requested in 2022

Pending / Anticipated Functional Unit Release 2023 (Will Be Based on 2022 Monitoring Report)		
Year	Pending units	% of FUs
2023	161.46	4%

Functional Unit Release – Abiaki 1



Functional Unit Release

- 
- **161.46 is based on:**
 - Cells 95, 96, 97, and 103 Construction Level 1 & 2
 - Abiaki 2 Construction Level 1
 - **Anticipate 105.08 credits requested for release in 2024**
 - **105.08 is based on:**
 - Abiaki 2 Construction Level 2
 - **73.13 for Cells 95, 96, 97, and 103 Biological Level 1 may also be requested**

DISCUSSION

