



Release Date:
February, 2003

 **AGNOLI
BARBER &
BRUNDAGE, INC.**
Professional Engineers, Planners & Land Surveyors

SOUTH LEE COUNTY WATERSHED PLAN

CONTRACT



C-8812

Prepared For:

THE SOUTH FLORIDA WATER MANAGEMENT DISTRICT

Governing Board:

Michael Collins, *Chairman*
Michael D. Minton, *Vice Chairman*
Mitchell W. Berger
Vera M. Carter
Gerardo B. Fernandez
Patrick J. Gleason
Nicholas J. Gutierrez Jr.
Harkley R. Thornton
Trudi K. Williams

James Harvey, *Interim Executive Director*
Michael Slayton, *Deputy Executive Director*
Trevor Campbell, *Deputy Executive Director*

Fort Myers Service Center

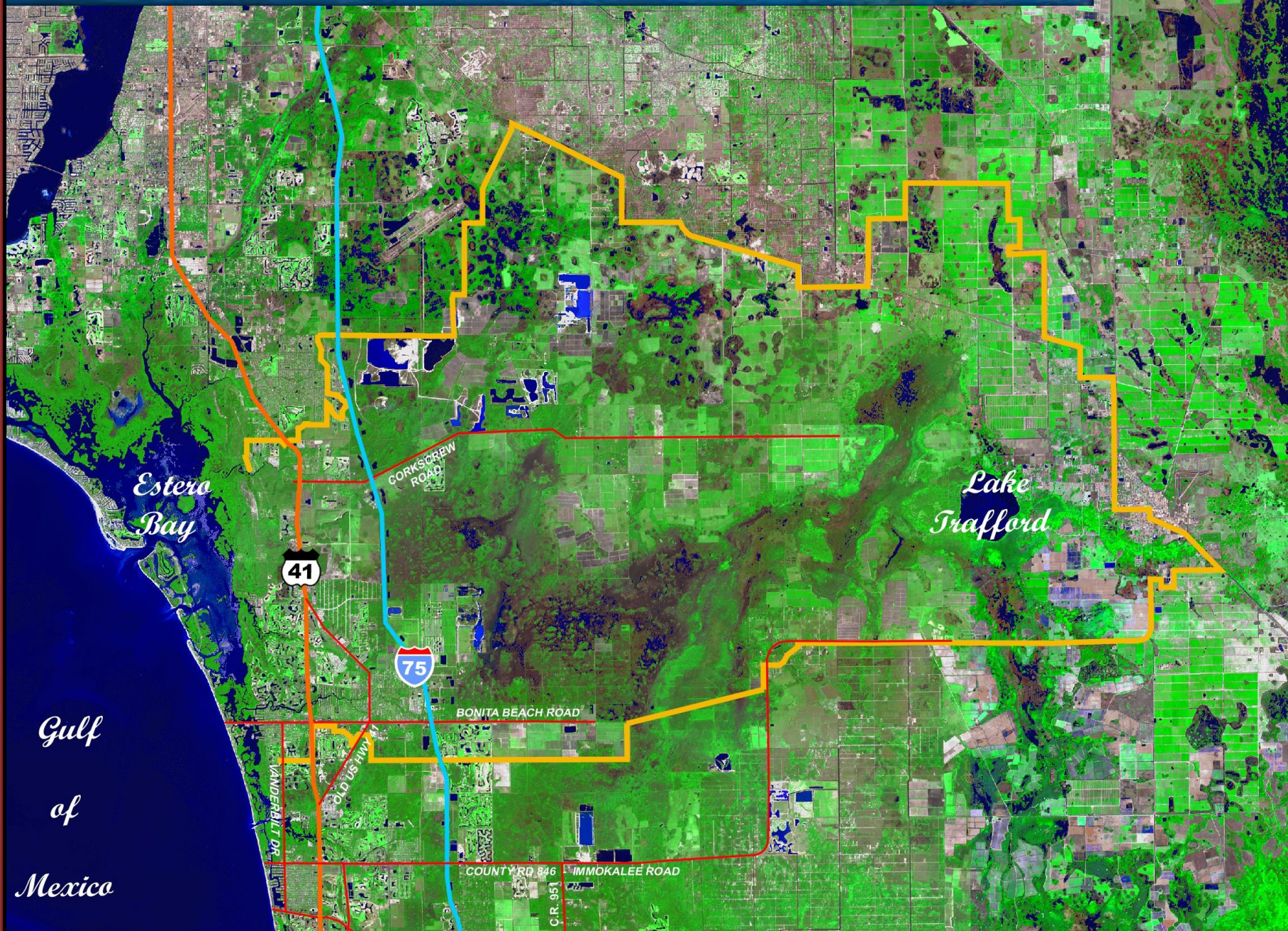
Chip Merriam, *Director*
Jacqueline Rippe, *Project Manager*

Prepared By:

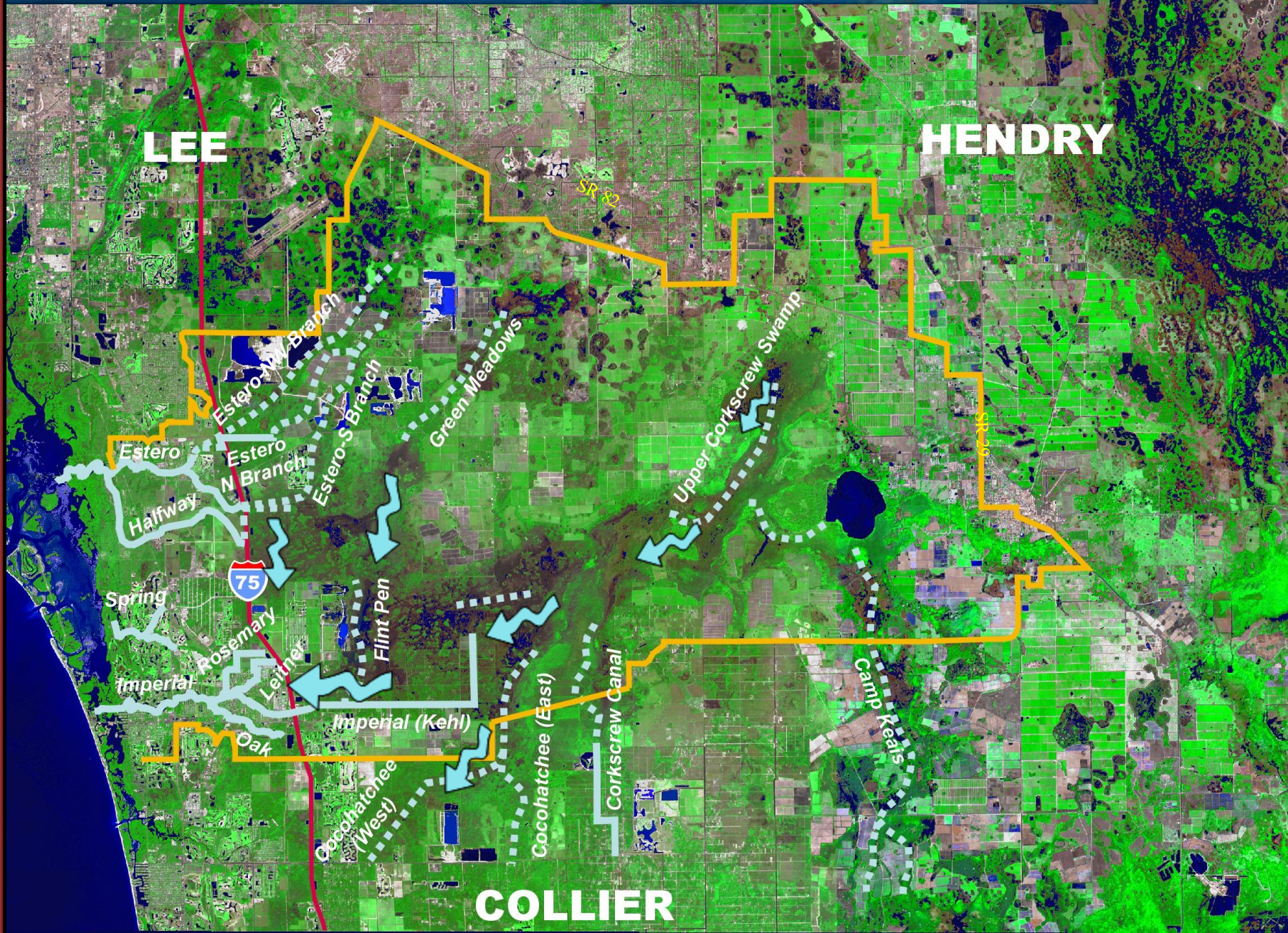
Johnson Engineering, Inc.
Agnoli, Barber & Brundage, Inc.
Boylan Environmental Consultants, Inc.

May, 1999

Watershed Map



1995 South Lee County Watershed Area



Current Adverse Conditions

- Area subject to flooding
- Neighborhoods under water
- Evacuation routes impeded

Manna Christian & Worthington

Looking South - October 19, 1995



Bonita Beach Road

Looking East to I-75 - October 16, 1995



Edith Drive at Bonita Beach Road



Imperial Bonita Estates Entrance Looking North



Generalized One Foot Contour Map

LEGEND

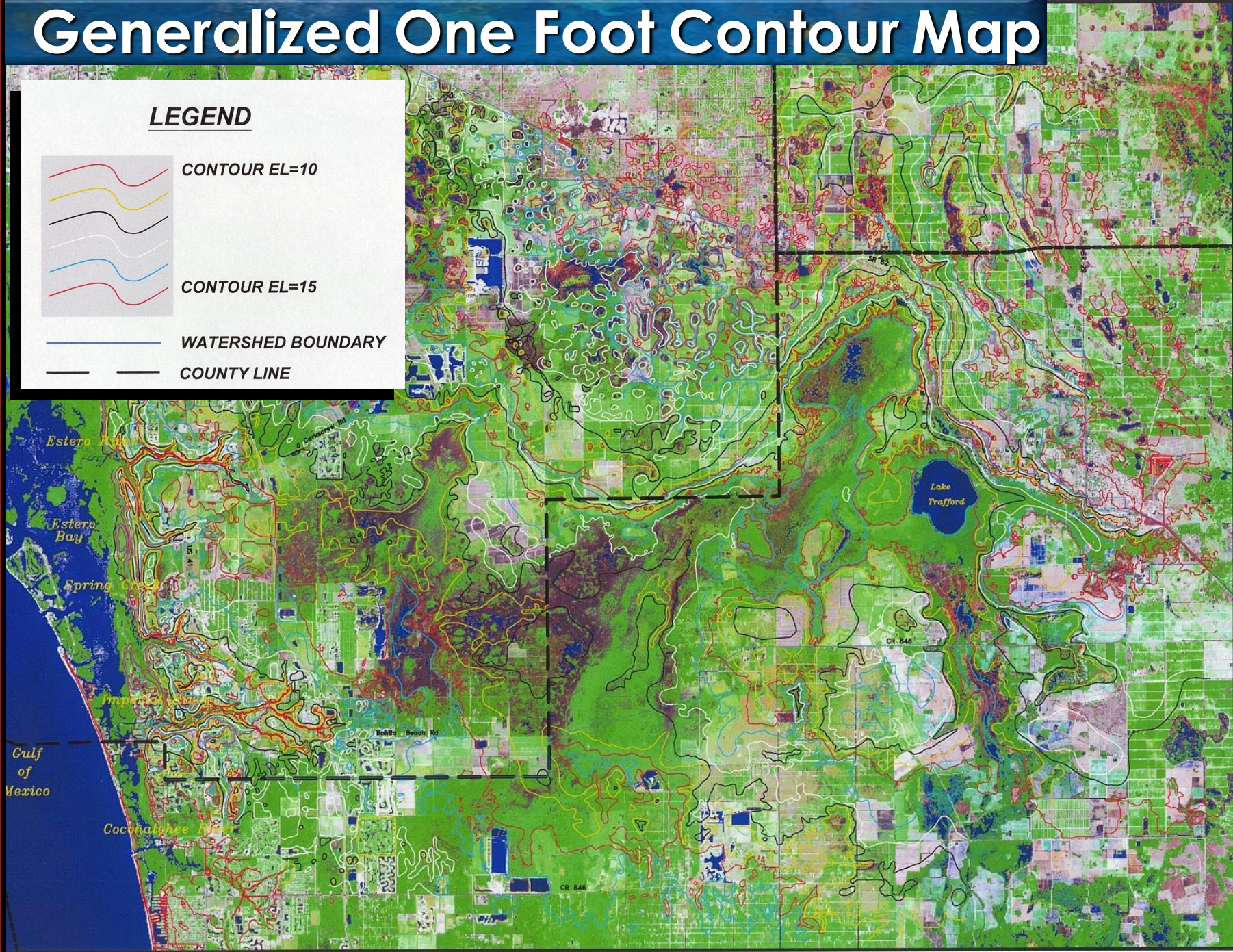


CONTOUR EL=10

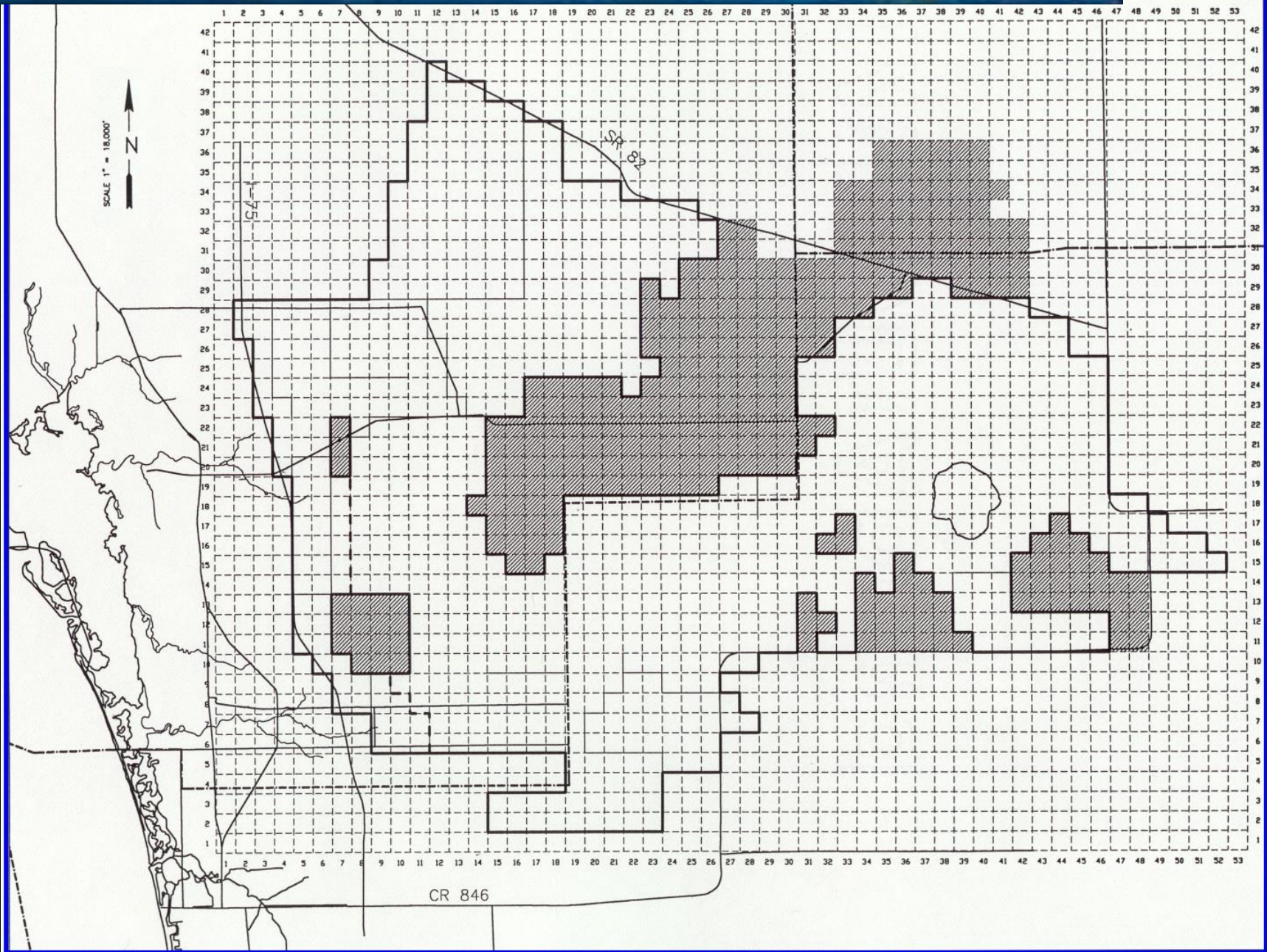
CONTOUR EL=15

WATERSHED BOUNDARY

COUNTY LINE



Model Grid



Recent Area Improvements



1. Estero River

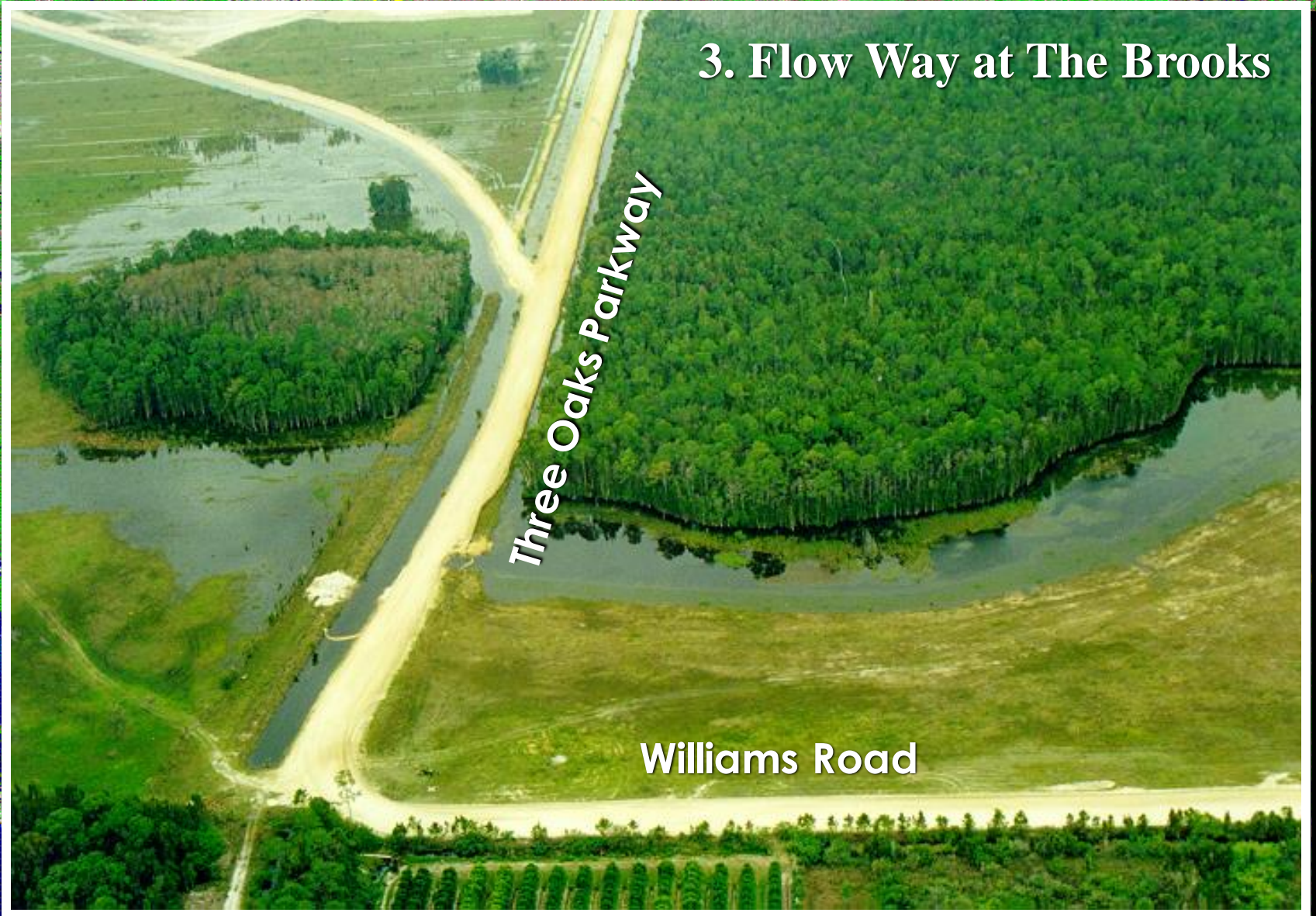
Recent Area Improvements



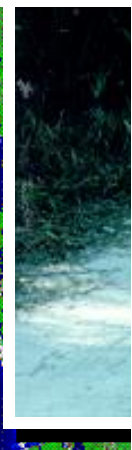
2. New Crossing at
Corkscrew Road

Recent Area Improvements

3. Flow Way at The Brooks



Recent Area Improvements



4. After Bridge Removal and Restoration

Recent Area Improvements



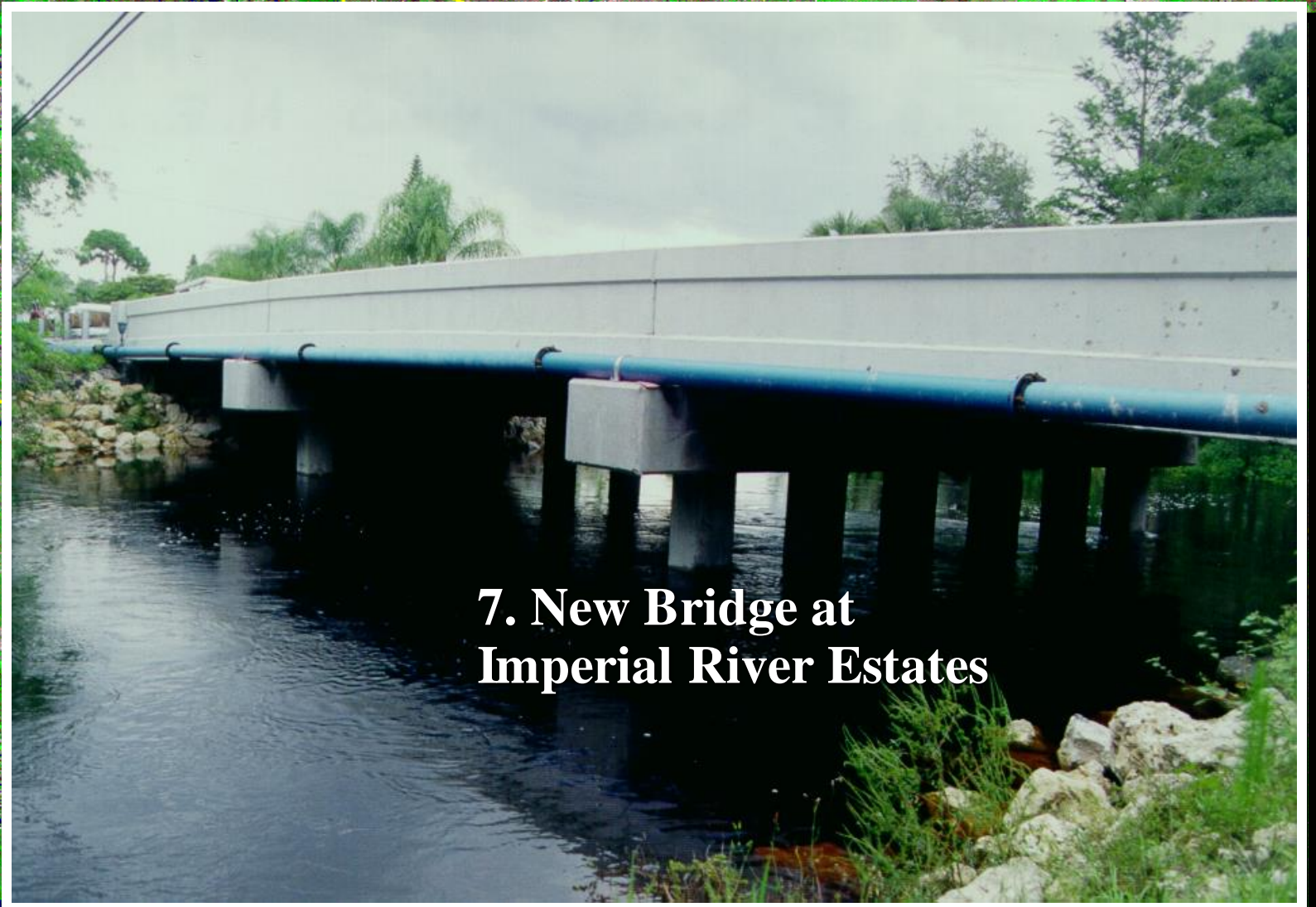
5. Improved Railroad Crossing

Recent Area Improvements



6. Imperial River maintenance

Recent Area Improvements



**7. New Bridge at
Imperial River Estates**

Recent Area Improvements



8. Flood line - 1995

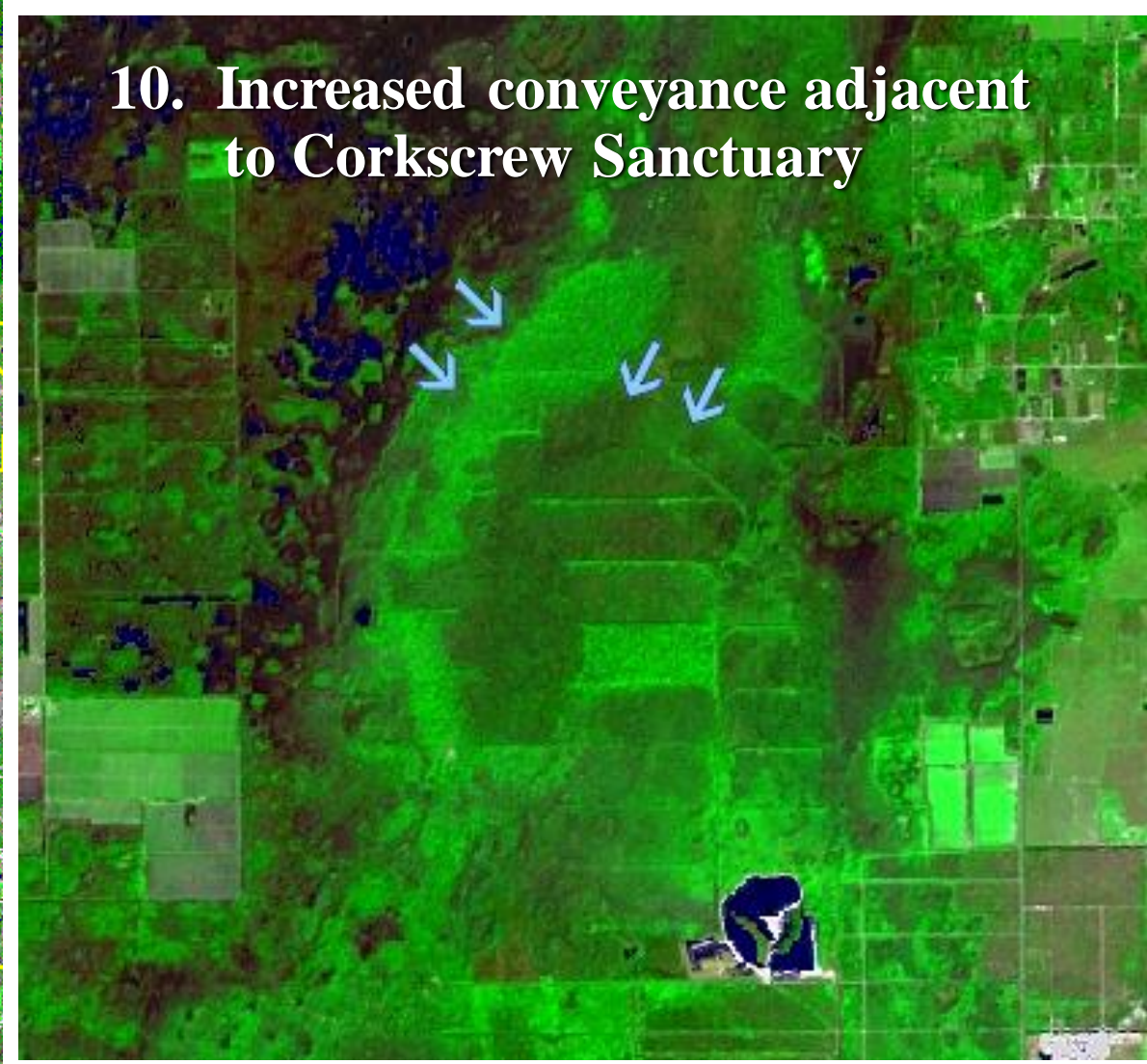
Recent Area Improvements



9. Kehl Weir

Recent Area Improvements

10. Increased conveyance adjacent to Corkscrew Sanctuary



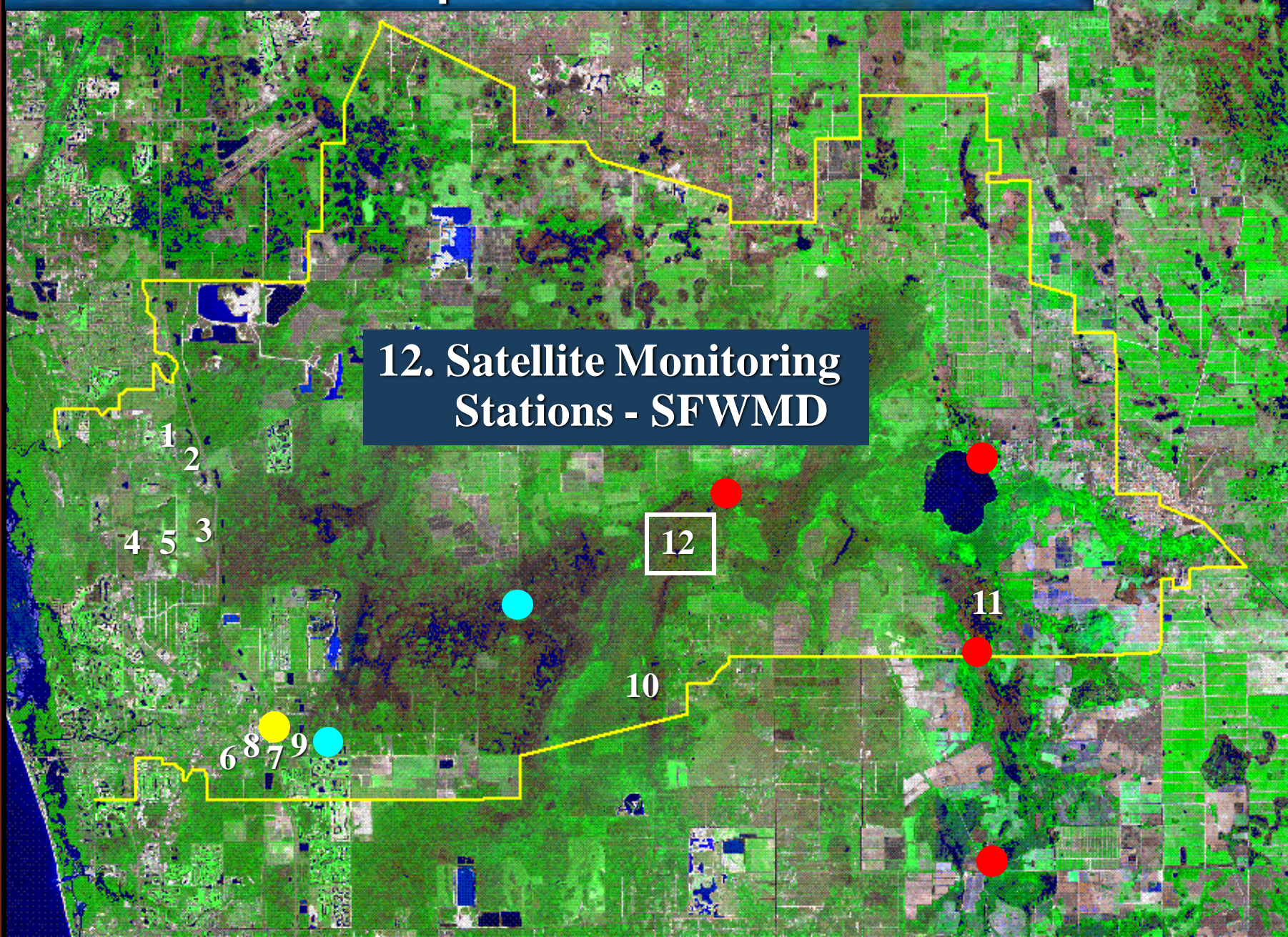
4

Recent Area Improvements

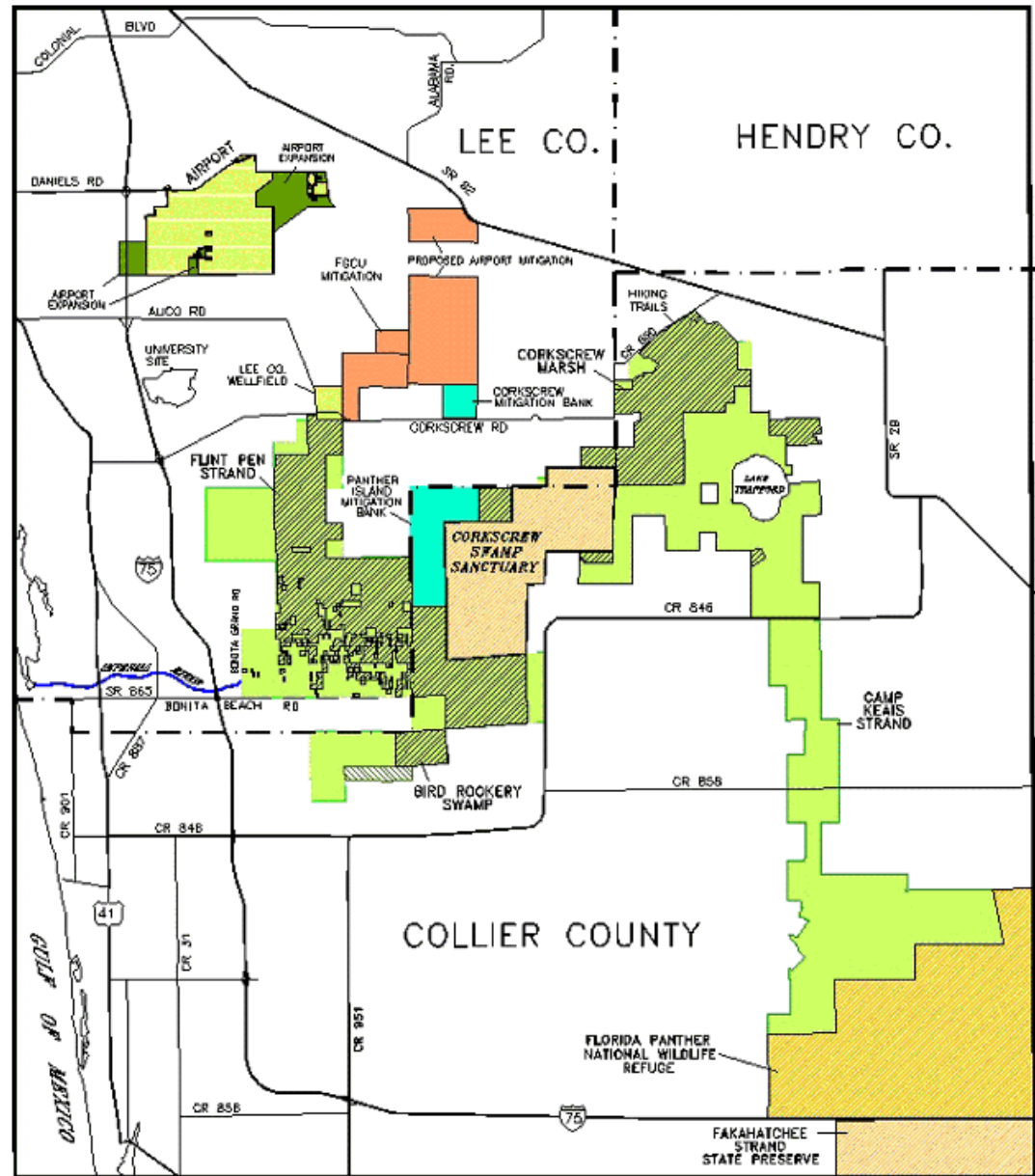


11. Camp Keais Strand

Recent Area Improvements



Permanent Preservation through CREW Trust – Save Our Rivers Program



0 1 2 3 4
MILES
SOUTHWEST FLORIDA
REGIONAL PLANNING COUNCIL
APRIL 2006

- | | | |
|-----------------------|------------------------|--------------------|
| CREW (PROPOSED) | MITIGATION BANK | AIRPORT MITIGATION |
| ACQUIRED (APPROX.) | OTHER PRESERVE/RESERVE | AIRPORT EXPANSION |
| CONSERVATION EASEMENT | | |

CREW.DWG

Recent Restoration Successes



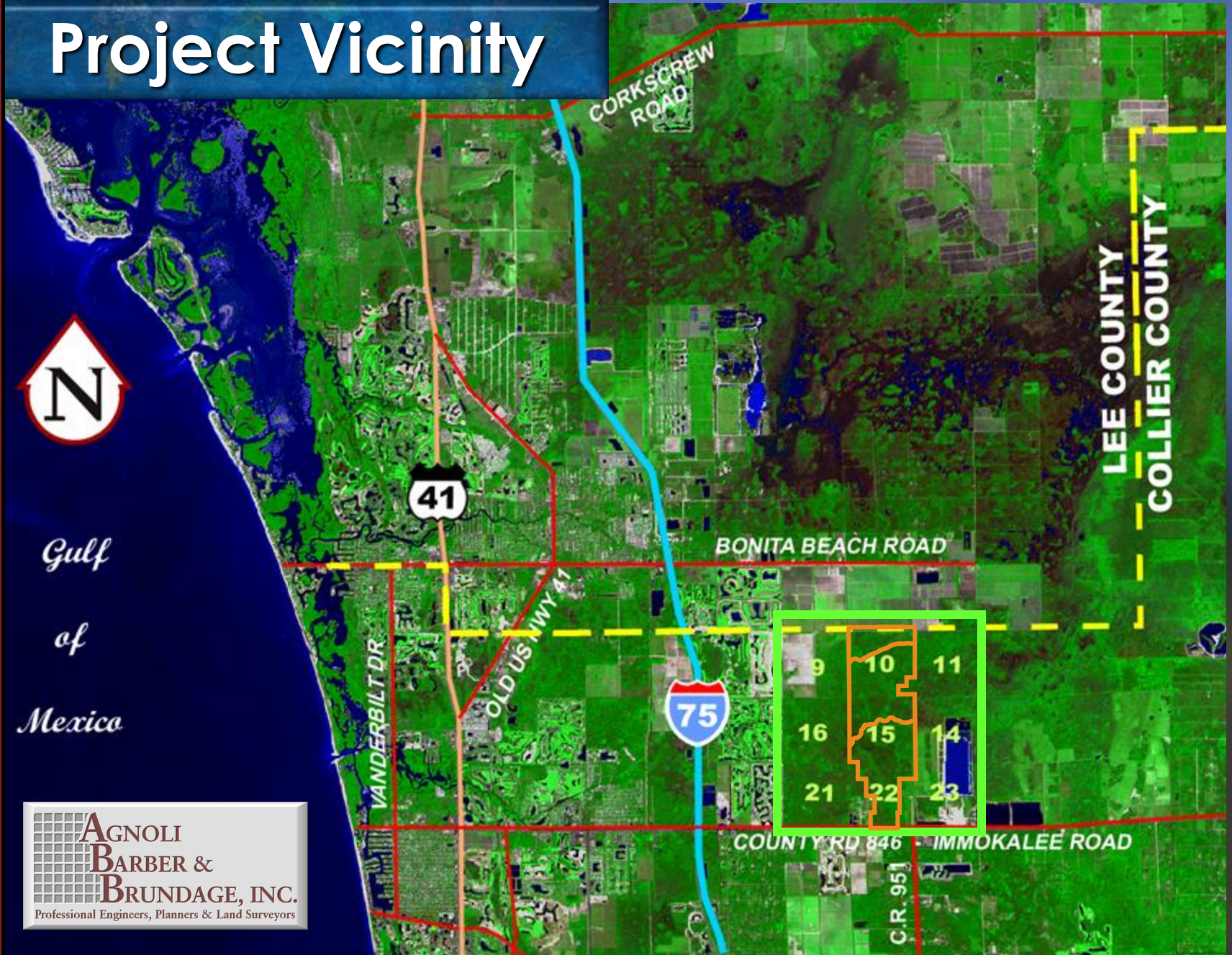
■ The Brooks
– 1997

Recent Restoration Successes

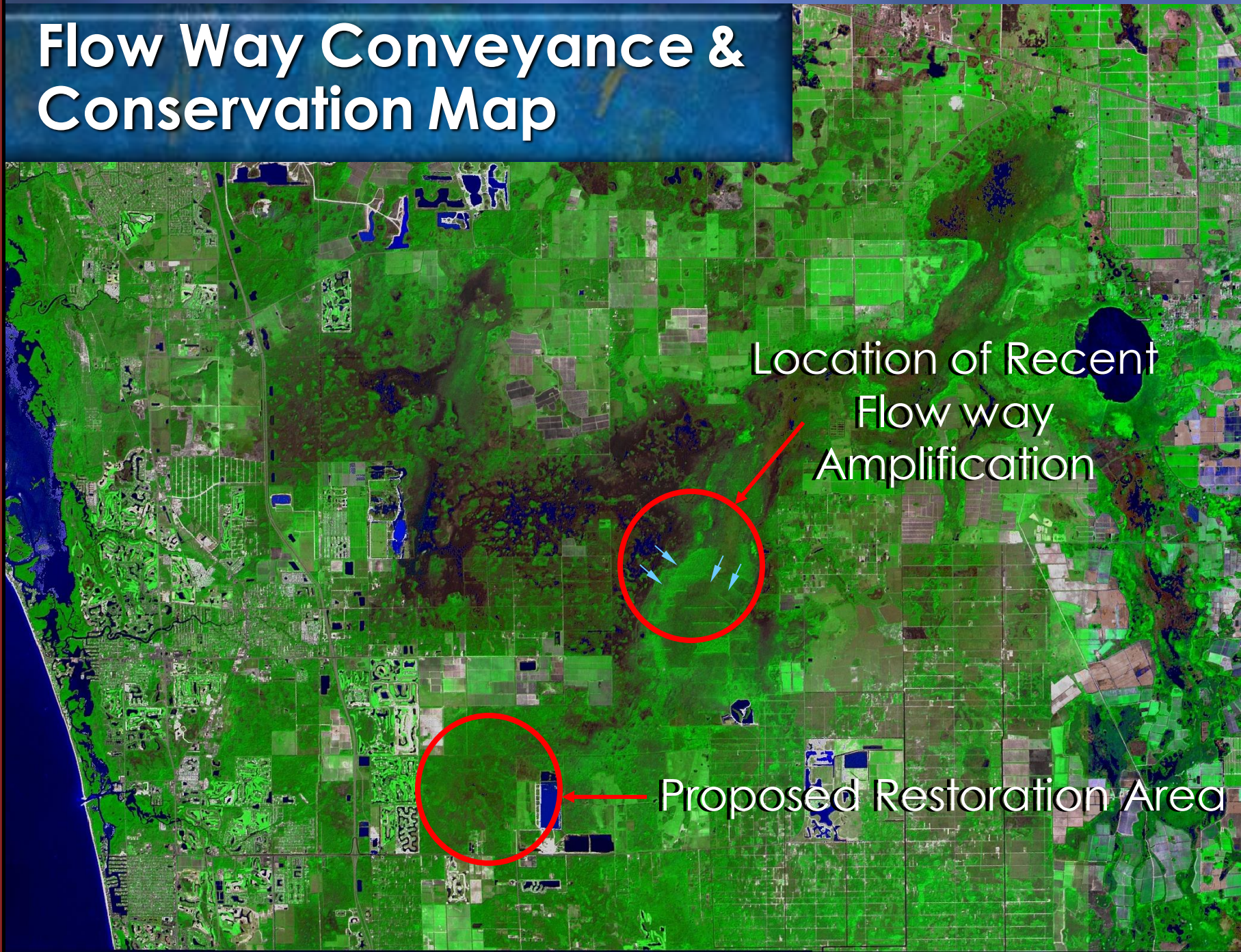


■ The Brooks
– Today

Project Vicinity



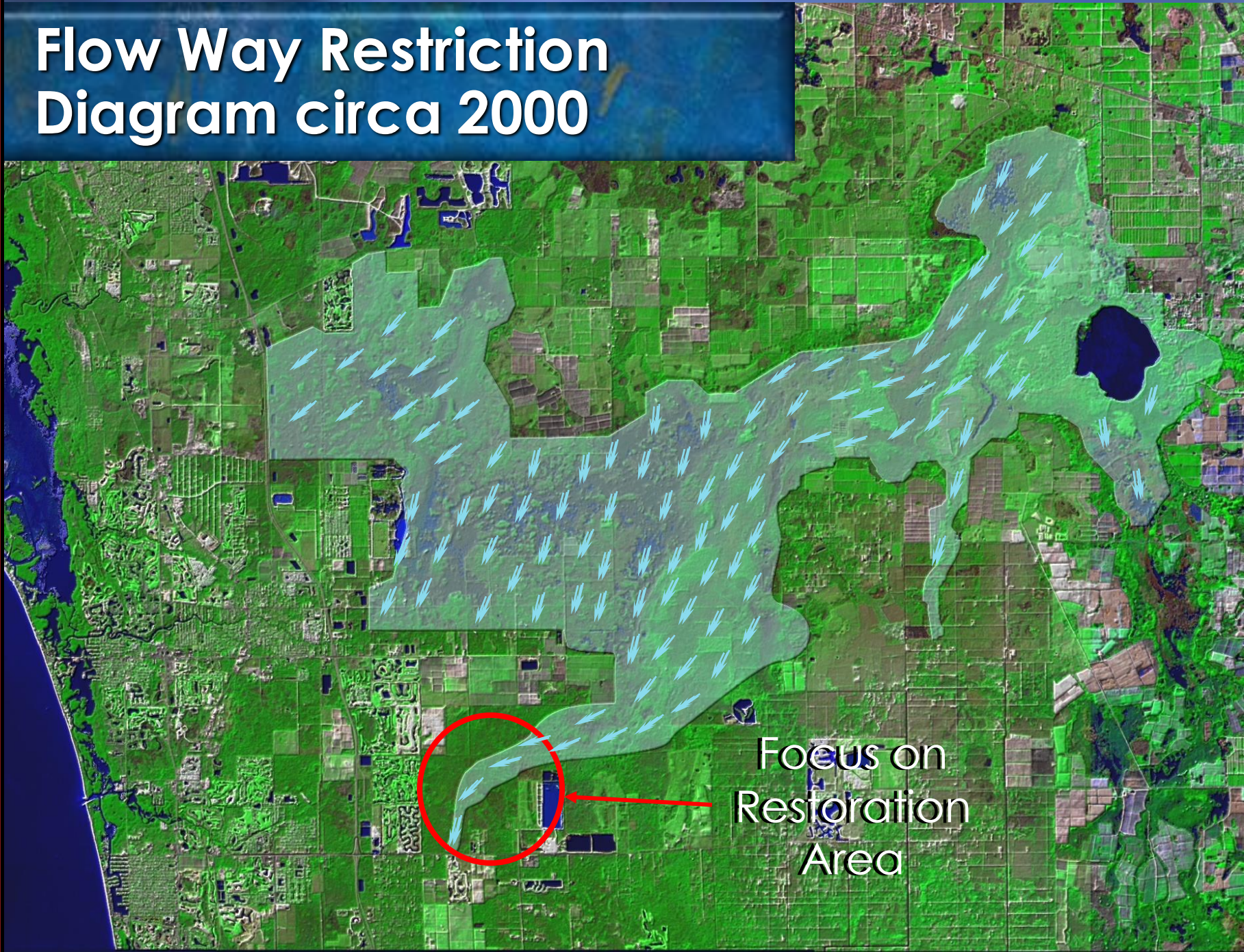
Flow Way Conveyance & Conservation Map



Location of Recent
Flow way
Amplification

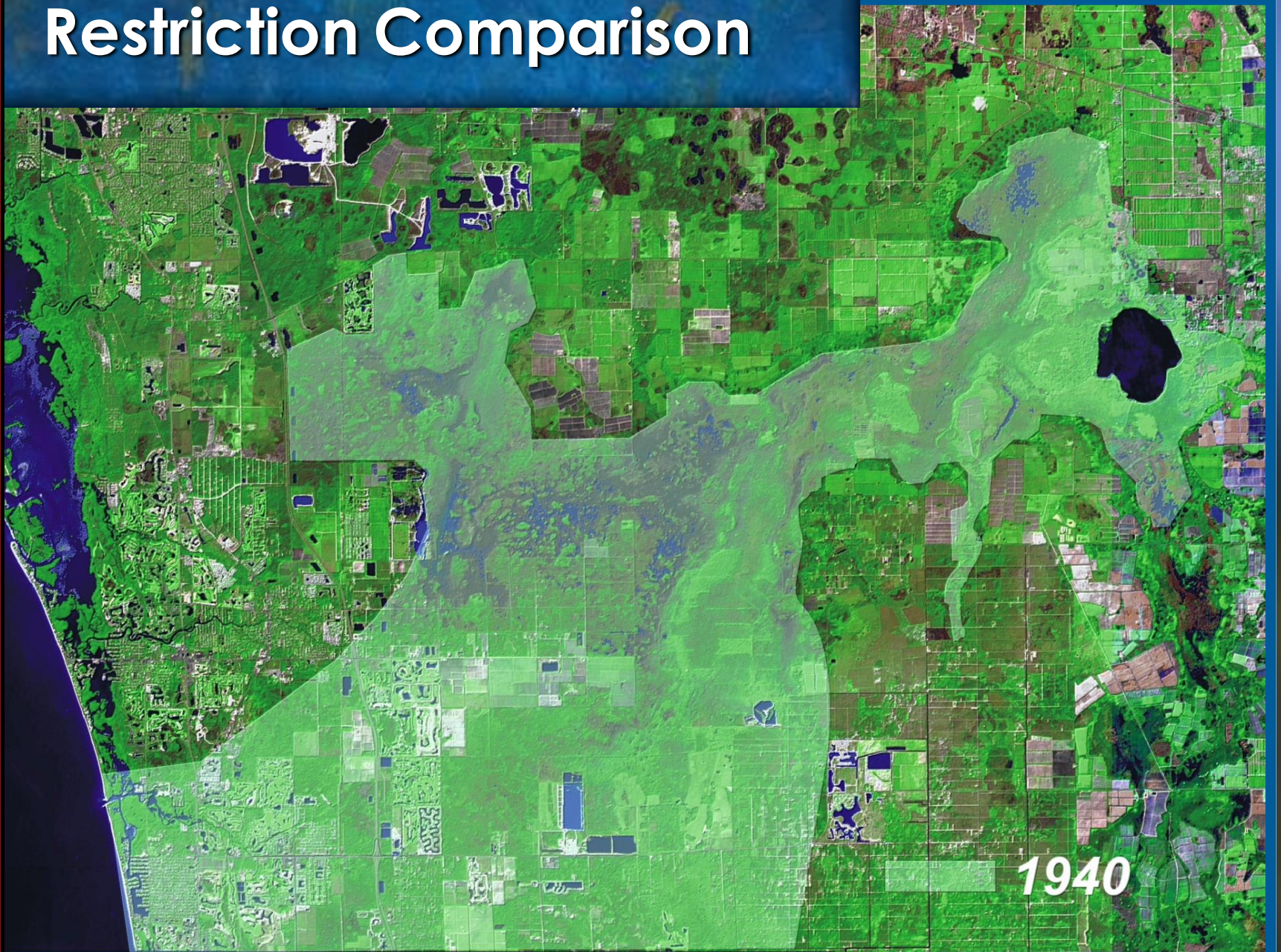
Proposed Restoration Area

Flow Way Restriction Diagram circa 2000



Focus on
Restoration
Area

Restriction Comparison



Previous Erosion at Existing Outfall Location



Outfall Location



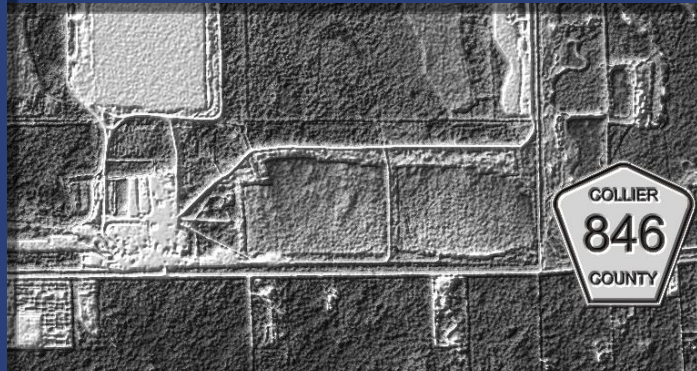
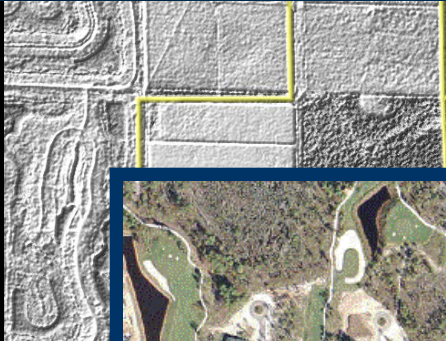
Proposed Outfall Location



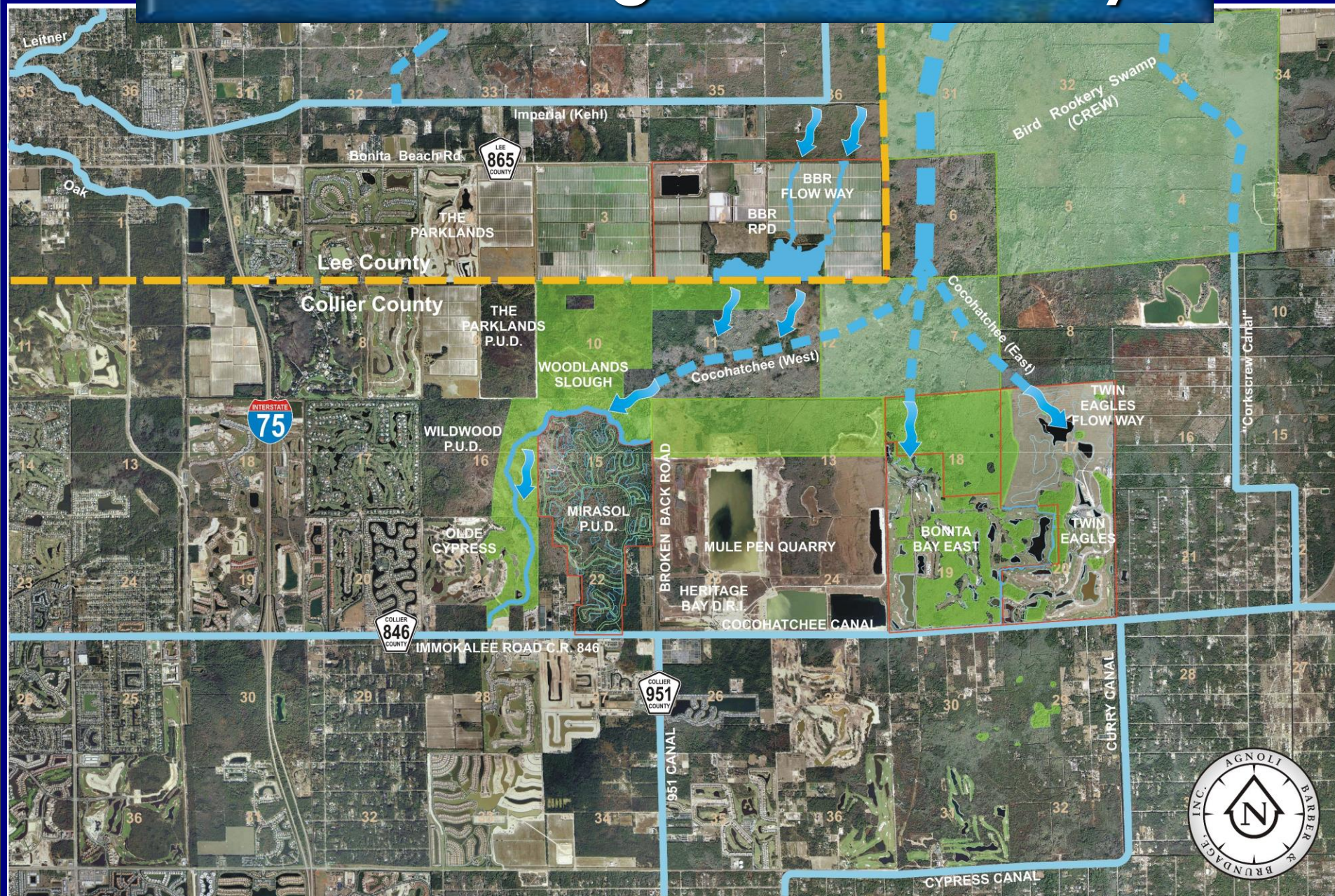
View Downstream from
Proposed Outfall



Constricted Area of Existing Flow Way Conveyance



Enhanced Regional Flow Ways



Project Summary

- Restore historic drainage patterns and conditions
- Provide improved water conveyance in region
- Help alleviate the threat of routine flooding



Thank you

 **AGNOLI
BARBER &
BRUNDAGE, INC.**
Professional Engineers, Planners & Land Surveyors