

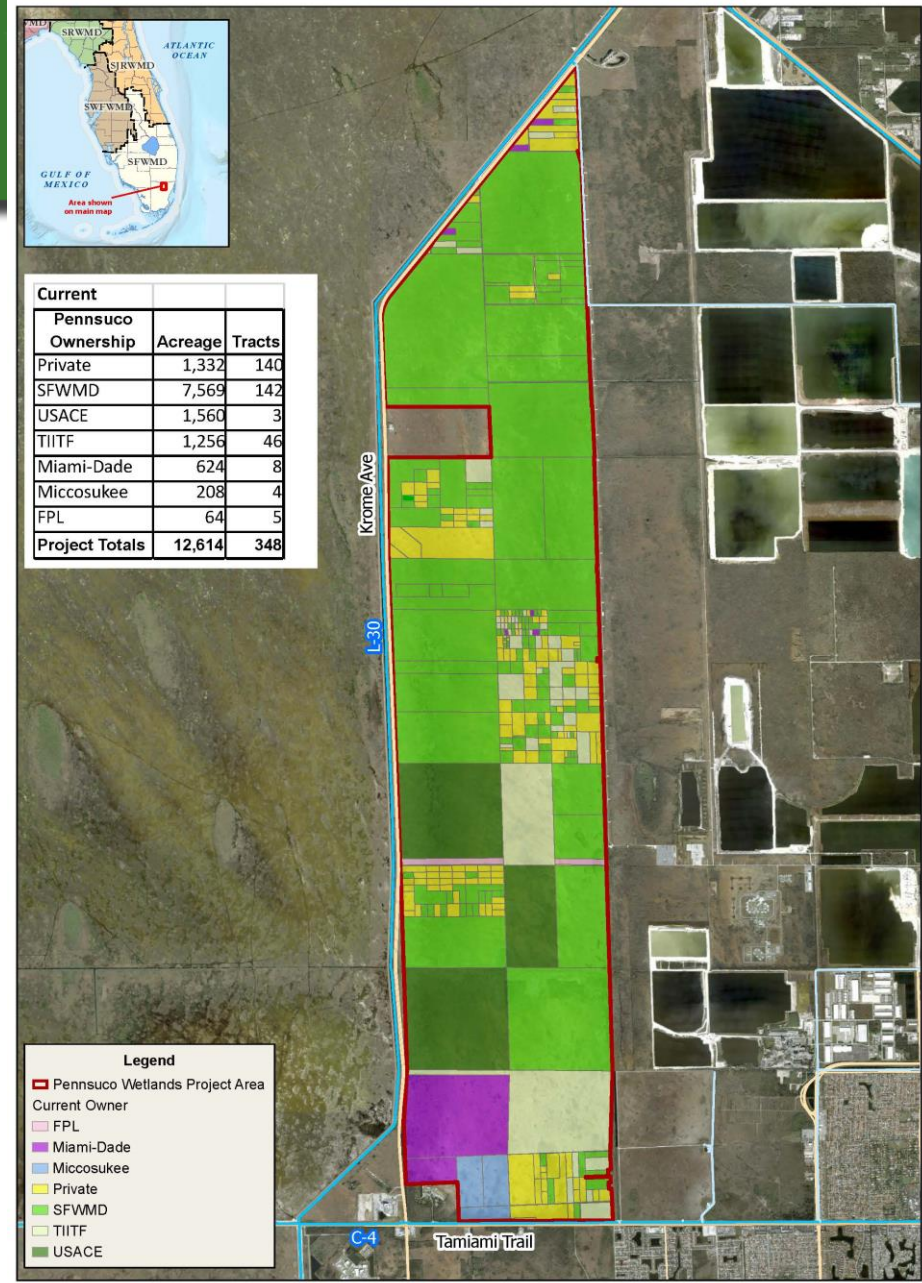


# **Pennsuco Wetlands Update Land Ownership and Value Summary**

# Land Ownership

## Acreage Summary:

- Private ownership is about 10% of total acres
- Over 60% of land is owned by SFWMD
- Local, State and Federal governments own about 27%
- FPL and Tribal land total about 3%





# Land Values

## SFWMD acquisitions past 5 years:

← (map)

- FY2021 – 23.19 acres at \$8,000 / ac
  - Appraised Value = \$15,000 / ac
- FY2023 – 5 acres at \$8,000 / ac
  - Appraised Value = \$75,000 / ac

## Private sales in Pennsuco:

(map) →

- 2020 – 3 sales – avg. \$35,000 / ac
- 2021 – 2 sales – avg. \$27,337 / ac
- 2022 – 2 sales – avg. \$88,000 / ac
- 2023 – 7 sales – avg. \$92,000 / ac



# Land Acquisition Funds

## Pennsuco land acquisition fund balance:

- Land acquisitions: \$2,886,642
- Associated Costs: \$ 84,100
- Appraisals: \$ 89,952

### Note:

Potential to acquire approximately 30 acres at average market prices based on recent private sales.





# Discussion