

Martin County Utilities and Solid Waste

Water and Wastewater Facilities Update

*South Florida Water Management
UECWSP Meeting
May 5, 2010*

Anne Murray, PG

Martin County Utilities

Martin County Utilities

- Began early 1980's
- Package plant based
- Recently consolidated from 4 to 2 regional plants
- Serves over 85,000 customers
- 13 MGD max day/8.5 MGD ADD/106 per capita
- Current capacity 18 MGD /22 MGD build-out
- Floridan and surficial 75:25 blend
- Supports Reuse
- Facility Triggers Based on Demand/Capacity
 - Design@80% Construction @90%

2000 10-Year Facilities Plan Initiated to Meet Future Water and Wastewater Needs

Process provided for

- Financial
- Technical
- Operational capabilities



2009: Facilities Plan Implemented

Viability Assurances Actualized

- ✓ continued and expanded delivery services
- ✓ safe water supply
- ✓ sufficient capacity
- ✓ environmental protection
- ✓ customer satisfaction
- ✓ affordability and efficiency
- ✓ meet current water quality and environmental standards

Consolidated System

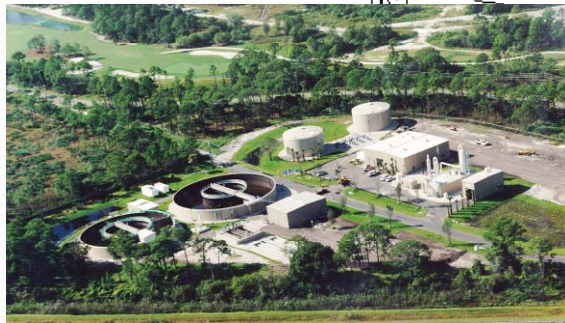
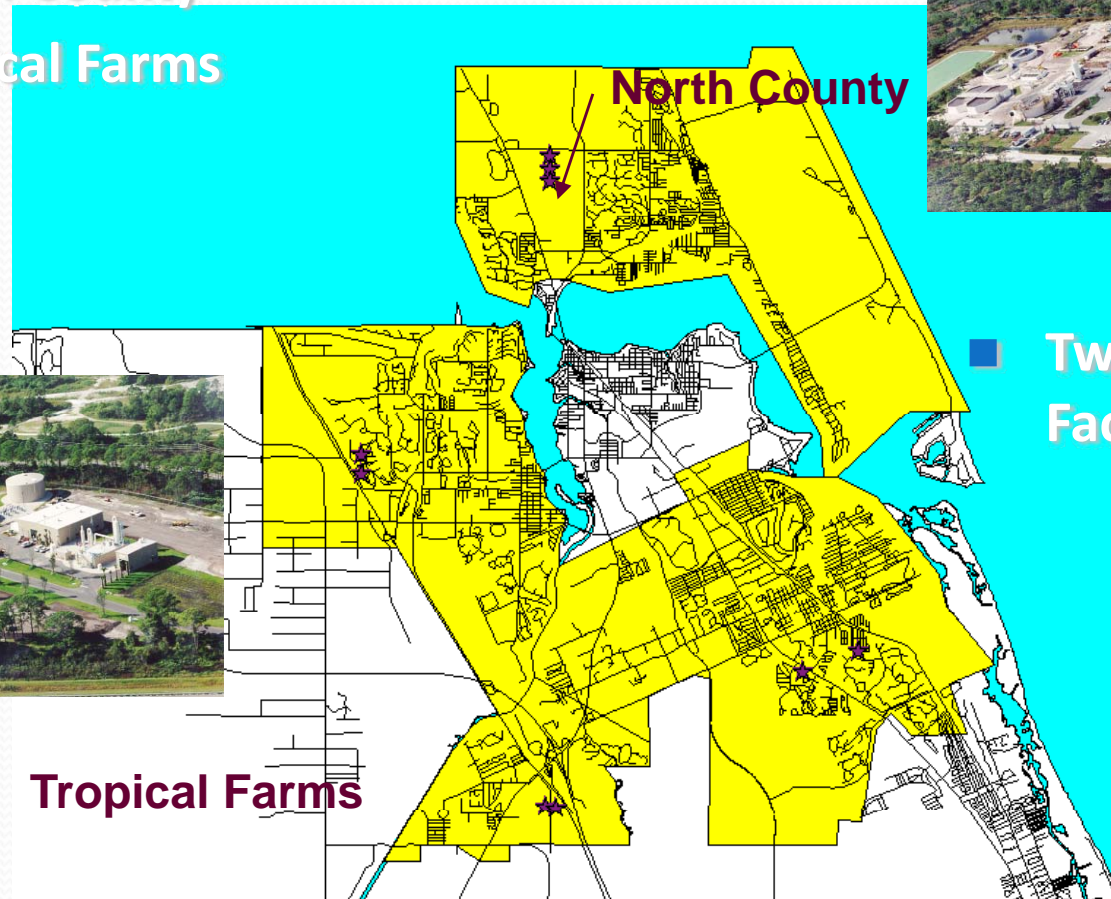
- ✓ Meets UECWSP Goals
- ✓ Supports Alternative Water Supplies
 - Reclaimed
 - Floridan
- ✓ Reduces reliance on the surficial aquifer
- ✓ Promotes conservation
- ✓ Over \$175M in capital improvements
- ✓ \$4.5M in District AWS grant funding



Martin County Consolidated System

- Two Regional Facilities

- North County
- Tropical Farms



Tropical Farms

- Two Reuse Repump Facilities

- Martin Downs
- Vista

Water Service

- Serve 28,000 retail and 38,200 residential accounts
- 44 wells (35 SAS & 9 FAS)
Total = 25.5 MGD
- 483 miles water transmission and distribution lines



North RO Expansion



North System Treatment Facility

- 3.3 lime softening plant
- 5.5 reverse osmosis plant
- 15 surficial wells
- 4 Floridan wells
- 25:75 blend ratio
- 8 MG ground storage tanks

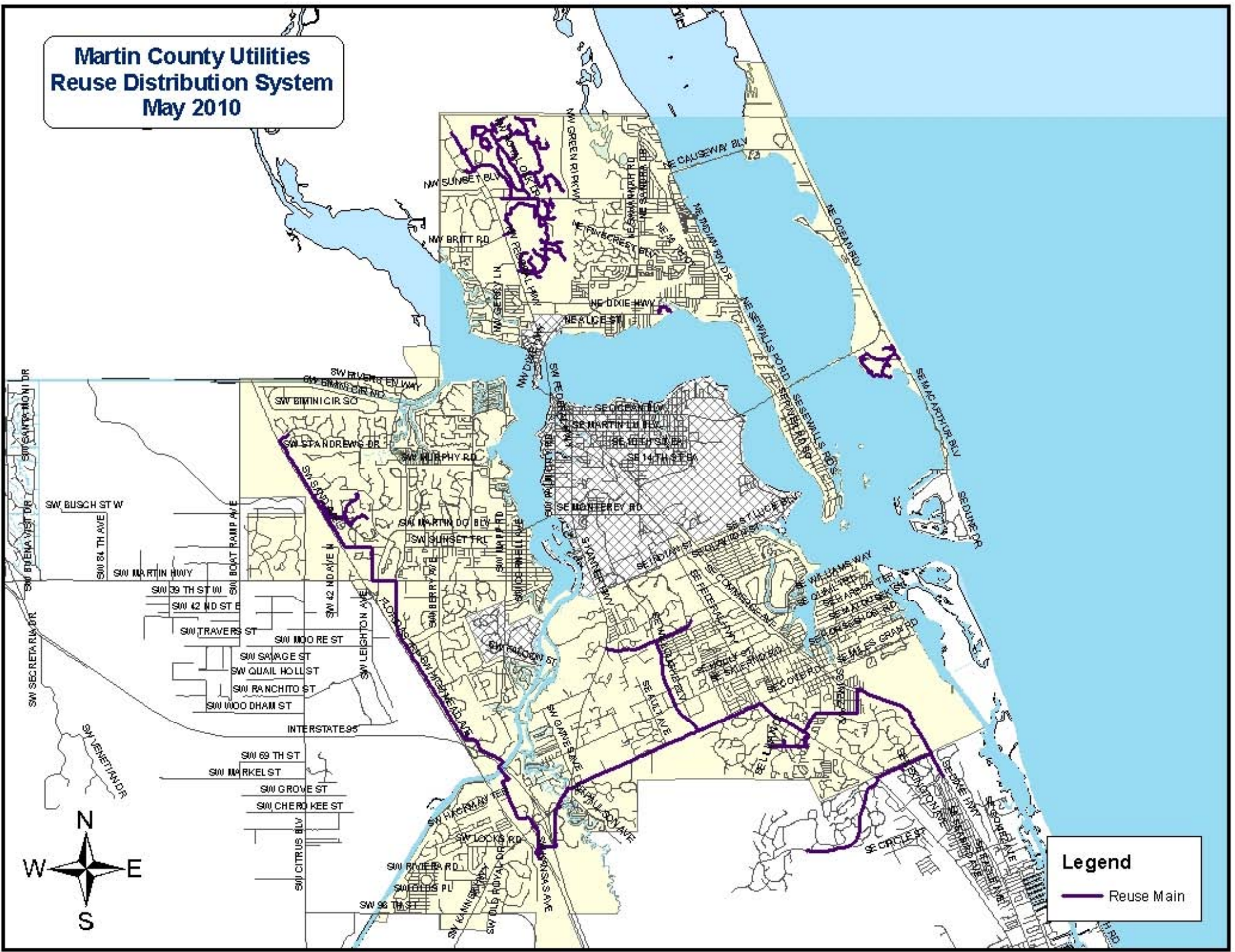


Tropical Farms Improvements

- WTP capacity increased from 1.5 MGD Lime/Nano to 10 MGD adding 5 Floridan wells and membrane treatment and DIW system



**Martin County Utilities
Reuse Distribution System
May 2010**



Legend

- Reuse Main



Other Noteworthy Achievements

- Reduced number of package plants
- Increase wetland programs and conservation lands
- Adopted conservation rates
- Increased interconnects

Rate Structure – Effective September 1, 2009

Promoting Water Conservation

Multi-Family Service:

Consumption Charge per 1,000 Gallons per Unit

0 – 5,000 gallons	\$1.97
5,001 – 7,500 gallons	2.76
7,501 – 12,500 gallons	3.55
12,501 and above	4.33

Residential Service:

Consumption Charge per 1,000 Gallons

0 – 10,000 gallons	\$1.97
10,001 – 15,000 gallons	2.76
15,001 – 25,000 gallons	3.55
25,001 and above	4.33

Irrigation Service:

Consumption Charge per 1,000 Gallons

0 – 10,000 gallons	\$2.38
10,001 – 25,000 gallons	3.55
25,001 and above	4.33

Commercial Service:

Consumption Charge per 1,000 Gallons
\$2.38

Interconnects with other Utilities

City of Stuart:

- 3 Interconnects for Water
- 1 Interconnect for Wastewater

City of Port St. Lucie:

- 1 Interconnect for Water

Ft. Pierce Utilities:

- 1 Interconnect for Water

South Martin Regional Utilities

- 1 Interconnect for Water



Recent Package Plant Acquisitions



Recent (2.42 MGD)

- Beacon 21
- Jensen Park Estates
- Pine Lake Village
- Fisherman's Haven
- Leilani Heights
- Miles Grant
- Indian River Plantation

Other

City of Stuart Interlocal (1.1 MGD
by 2027)

SFWMD AWS Grants

- 16 projects since FY2000 selected for funding
- Over \$4.5 million received
- Projects related to Floridan wells, RO treatment and reuse water
- Future proposed projects will include water conservation i.e. reuse master metering



Well You Know What They Say About Fish...

