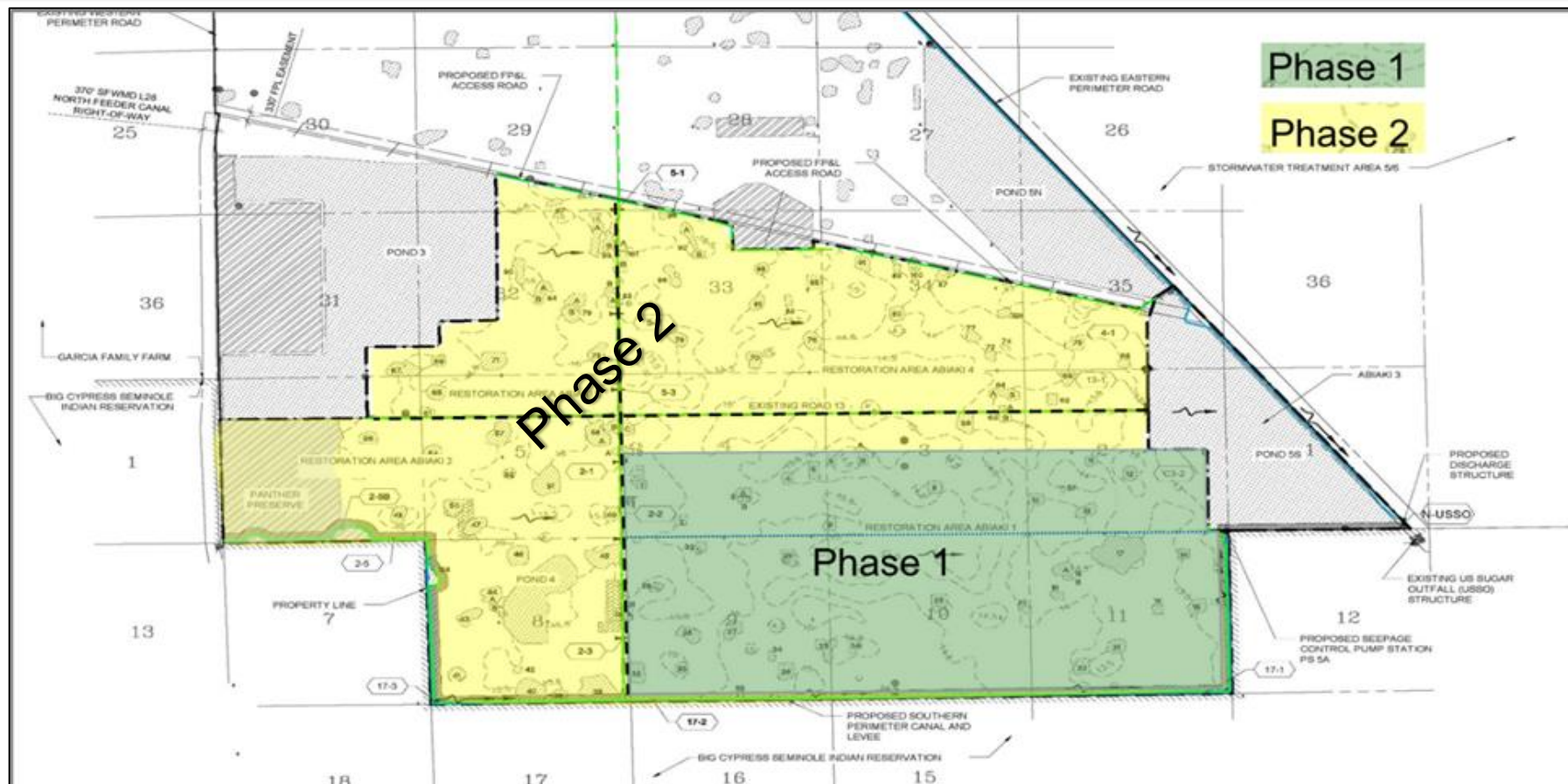




Sam Jones Abiaki Prairie Update

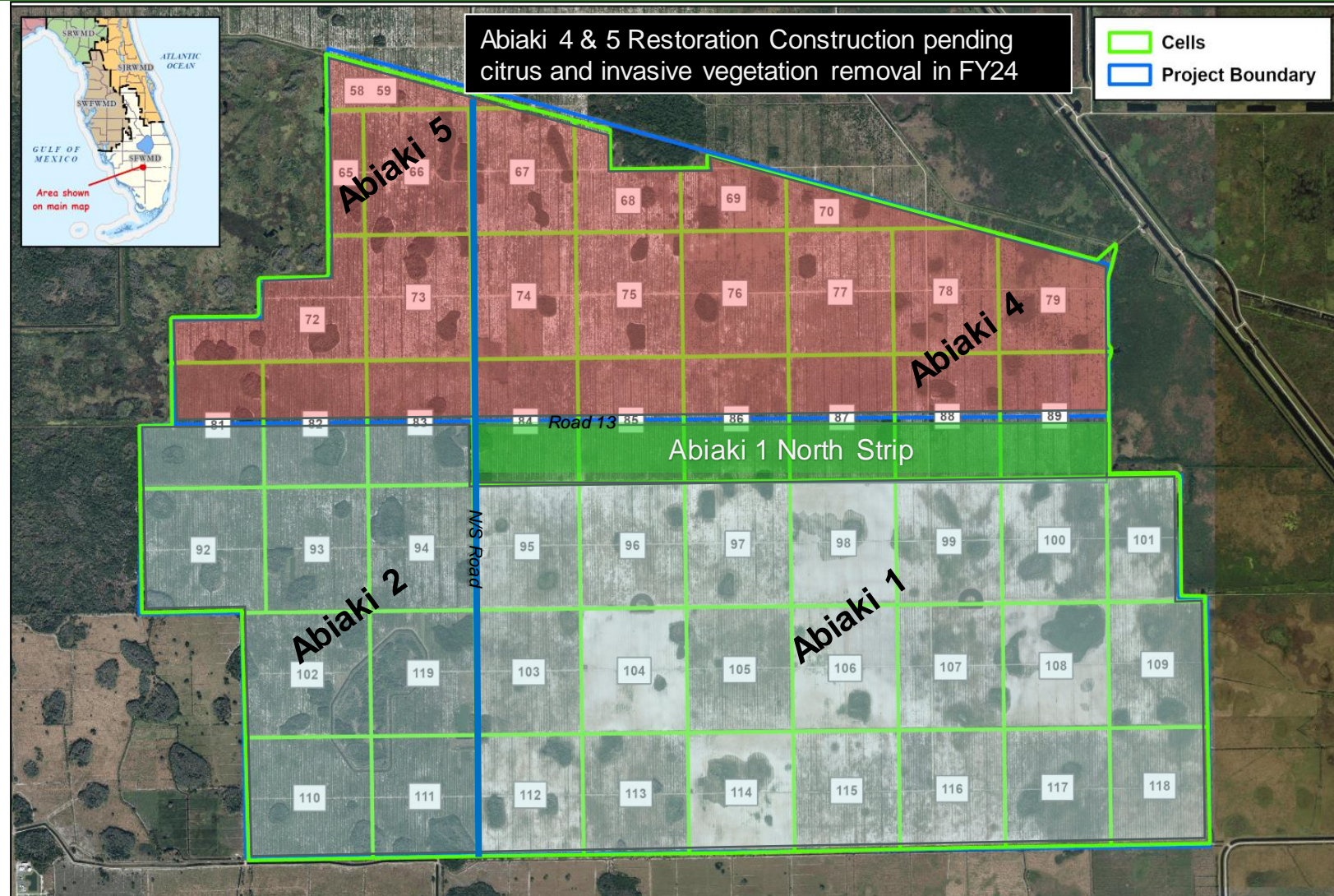
Construction Phases



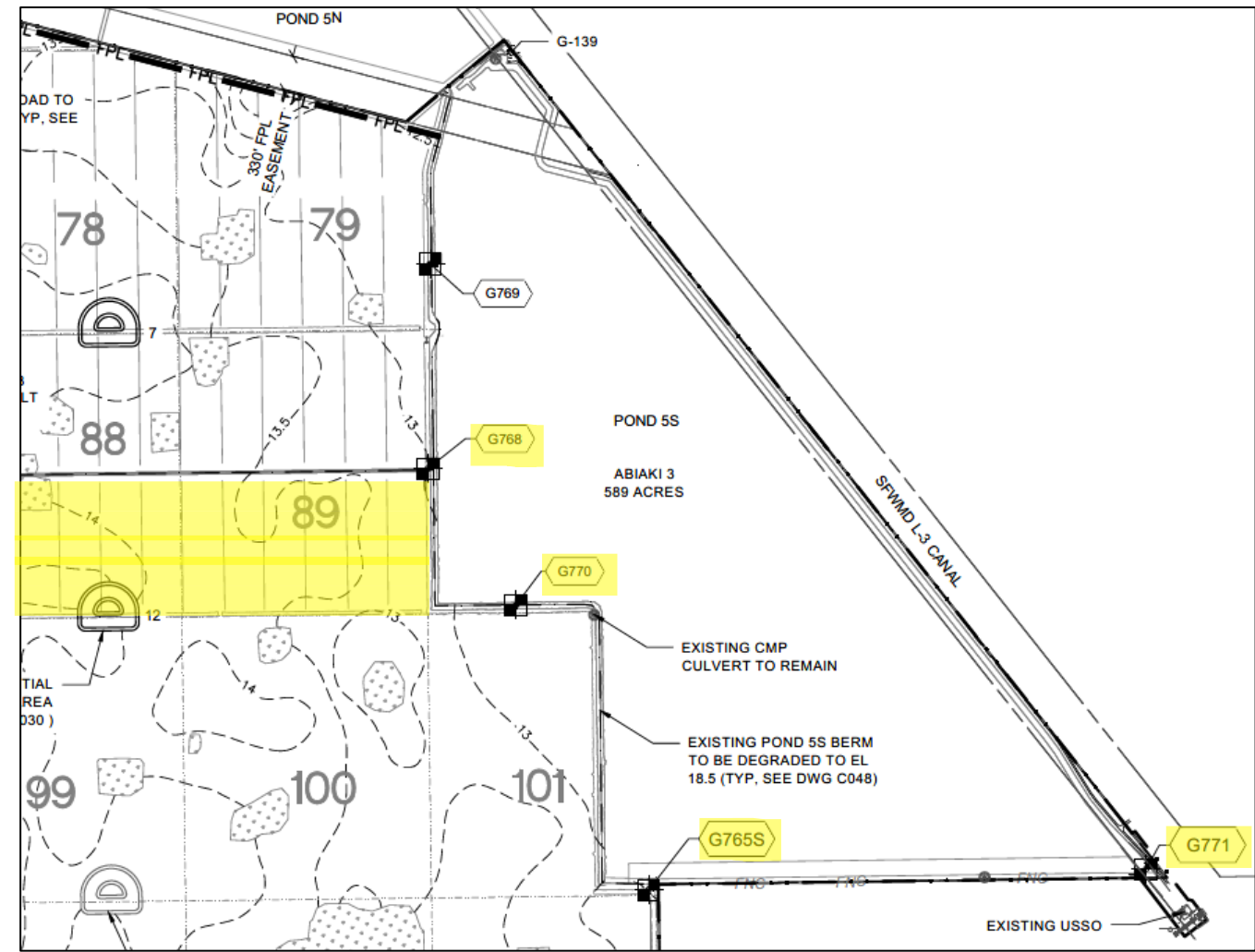
Note: Phase 1 performed early restoration work in a large portion of the project but is not a standalone restoration effort. Phase 2 portion of the work completes restoration efforts.

Construction Progress

- Completion of all seepage management system components
- Completion of Abiaki 1 and 2 roads, including Road 13, southern perimeter roads, and the degrading of the eastern side of Pond 5S (south of Rd 13)
- Completion of all remaining land leveling in Abiaki 1 and 2.
- Removal of all remaining citrus trees in Abiaki 4 and 5.
- Completion of new site discharge structure G771

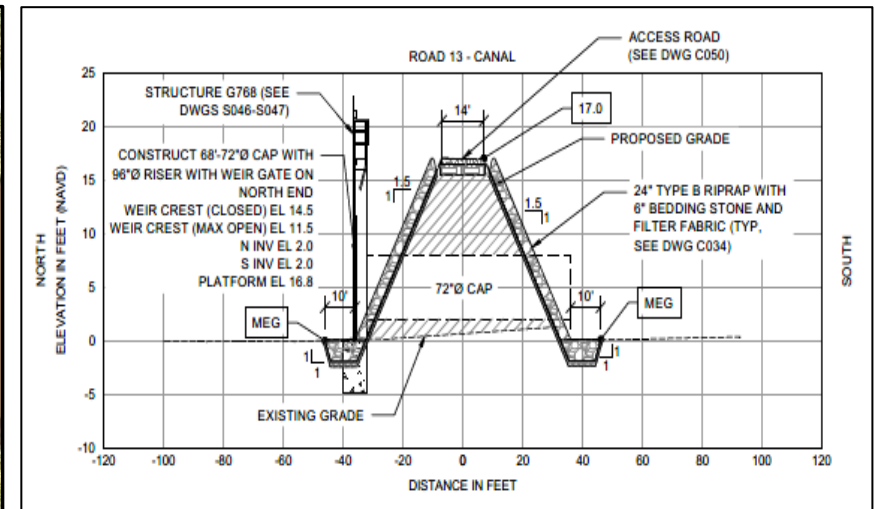


Construction Progress



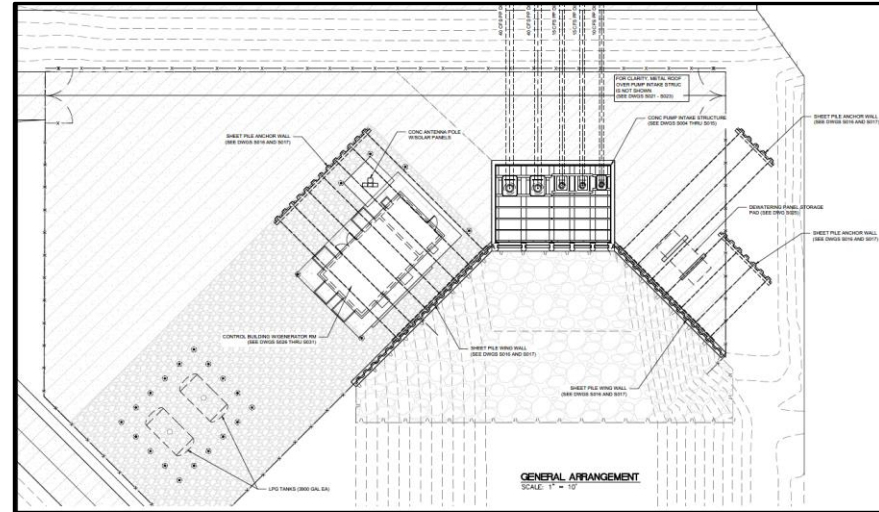
Construction Update G-768 Water Control Structure

Inter-basin water control structure between Abiaki 1 and Abiaki 4



East end of Rd 13E
Adjacent to Pond 5S

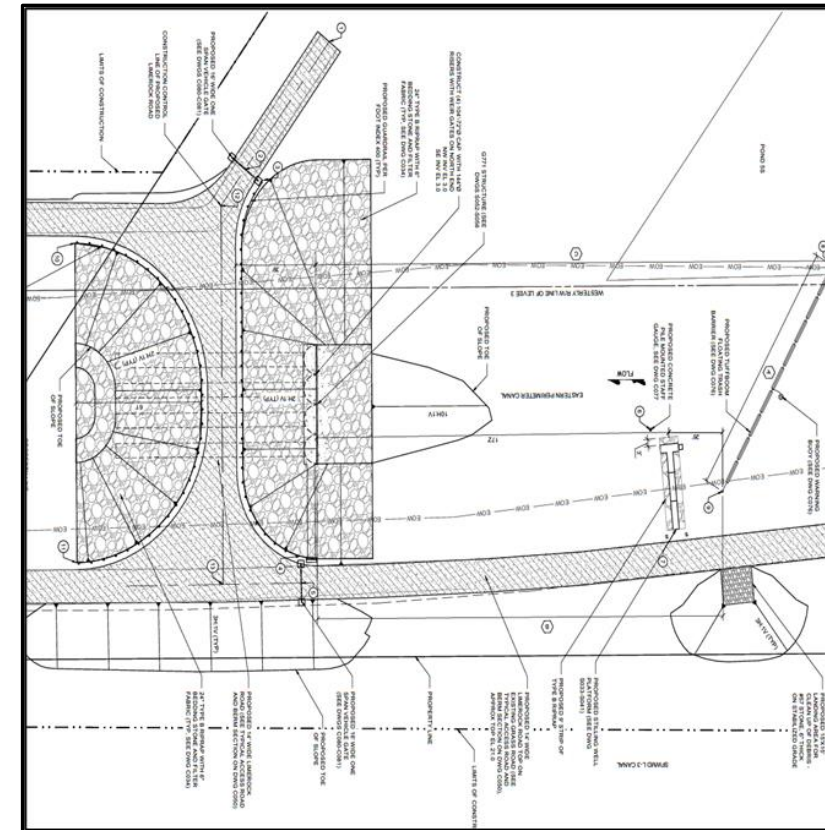
Construction Update G-765S Seepage Pump Station



Construction Update G-771 Discharge Structure

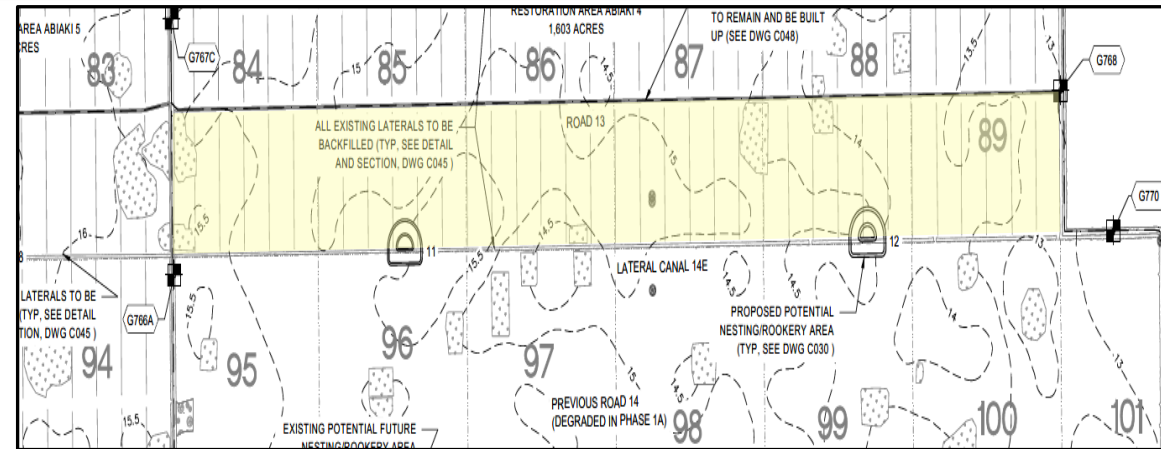


Replaces former "USSO"
discharge structure to L-28



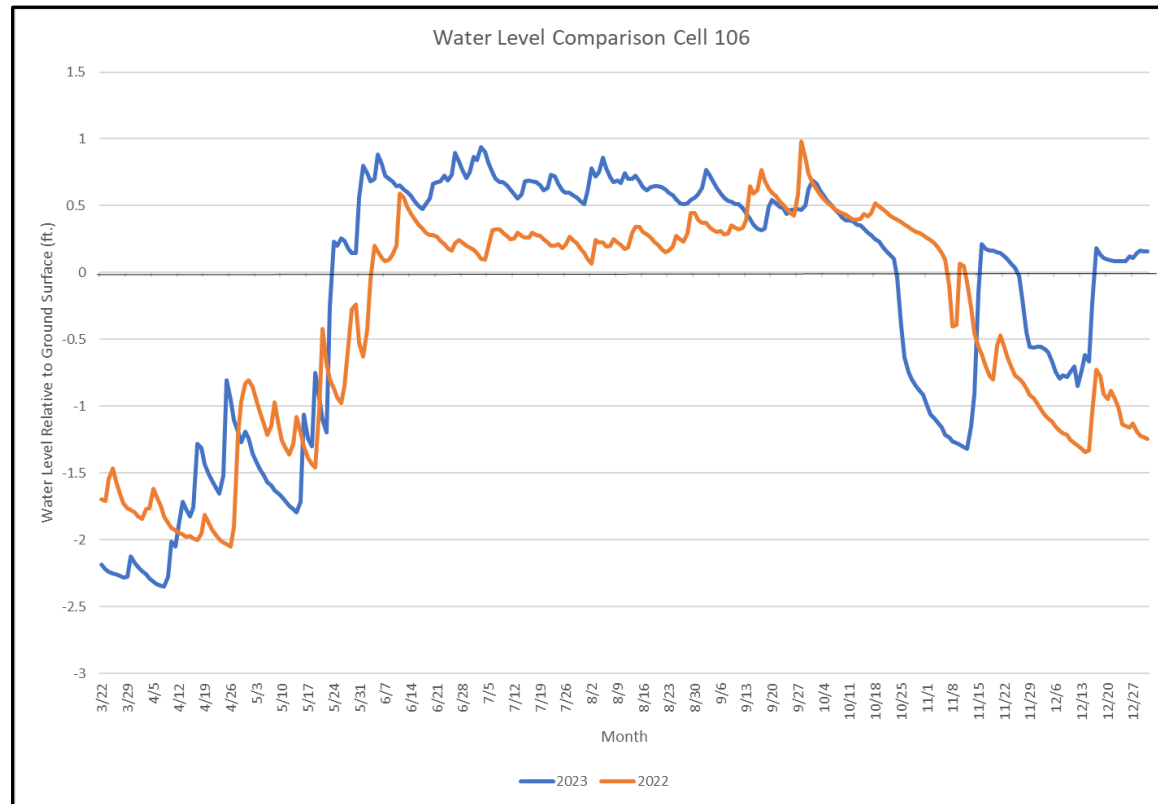
Construction Update

Lateral 14E Backfill and Abiaki 1 Leveling

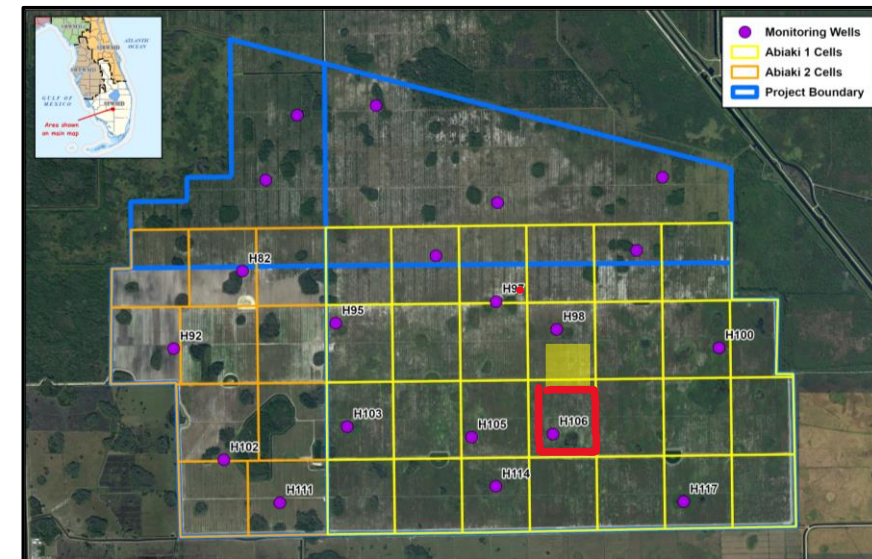


Hydrologic Monitoring

Challenge – Early Onset of Wet Season...and it kept on raining!



May 2023 13.1"
May 2022 3.9"



Hydrologic Monitoring Abiaki 1

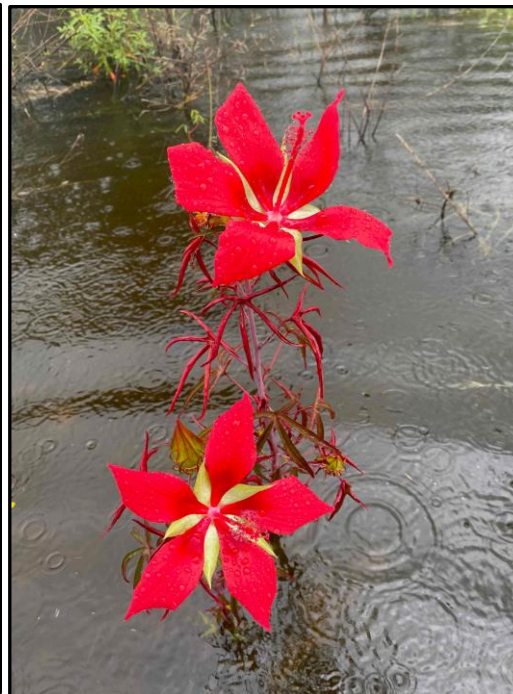


43. 3/1/2024

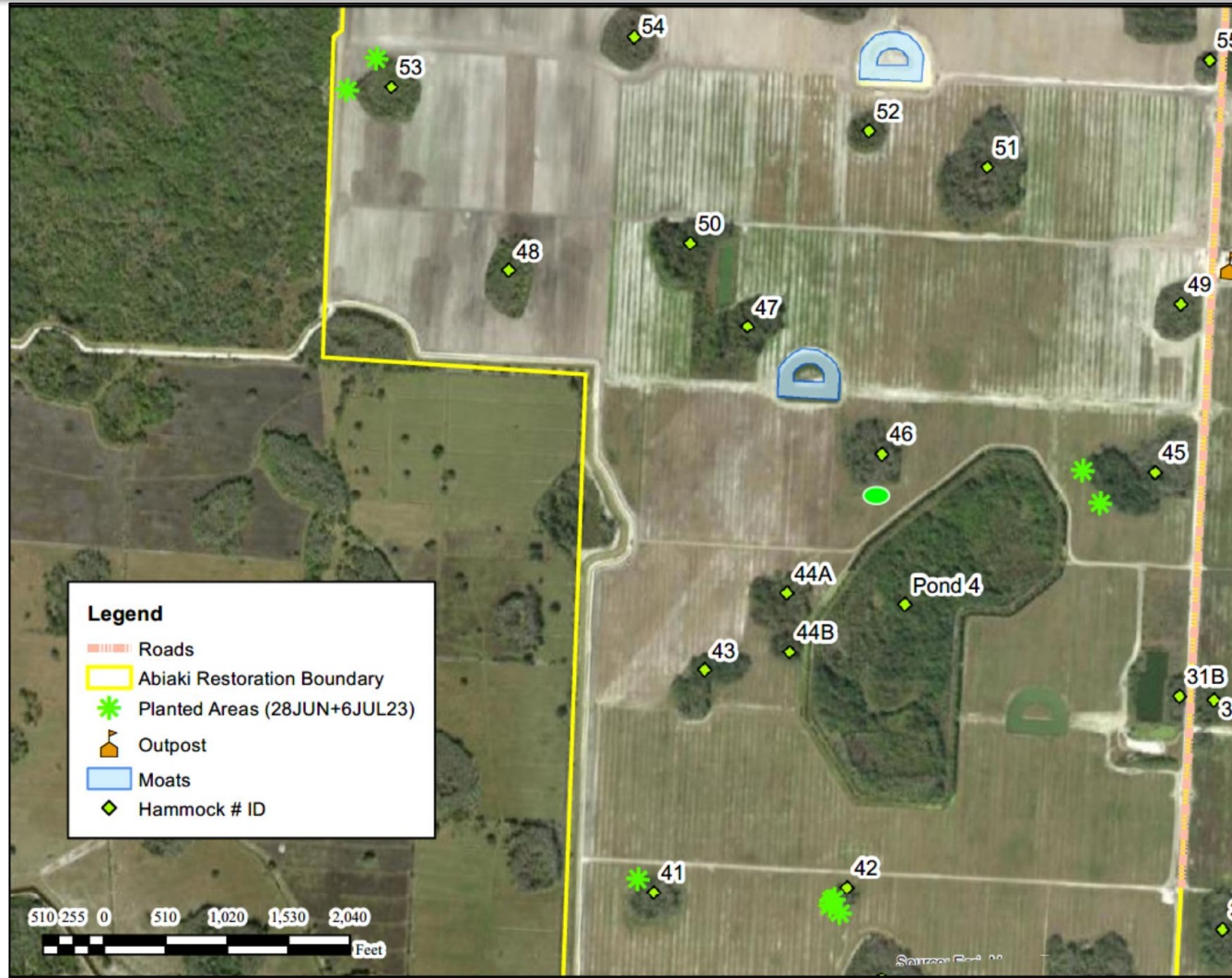
Native Plantings Abiaki 2

In-house & Contracted Native Plantings

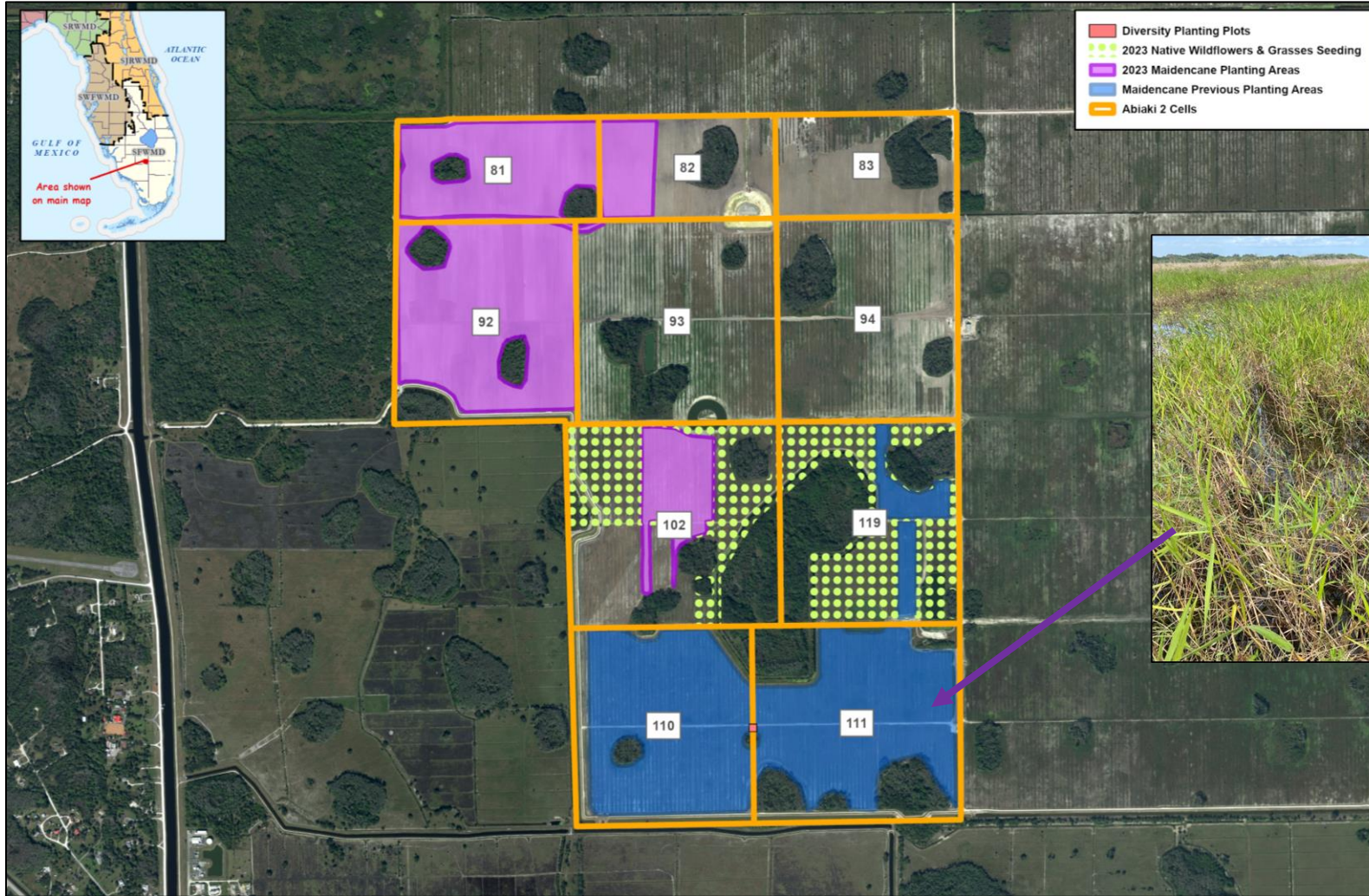
Native Seed Collection On & Offsite



Native Plantings Abiaki 2



Native Plantings Abiaki 2



Prescribed Fire Cell 101



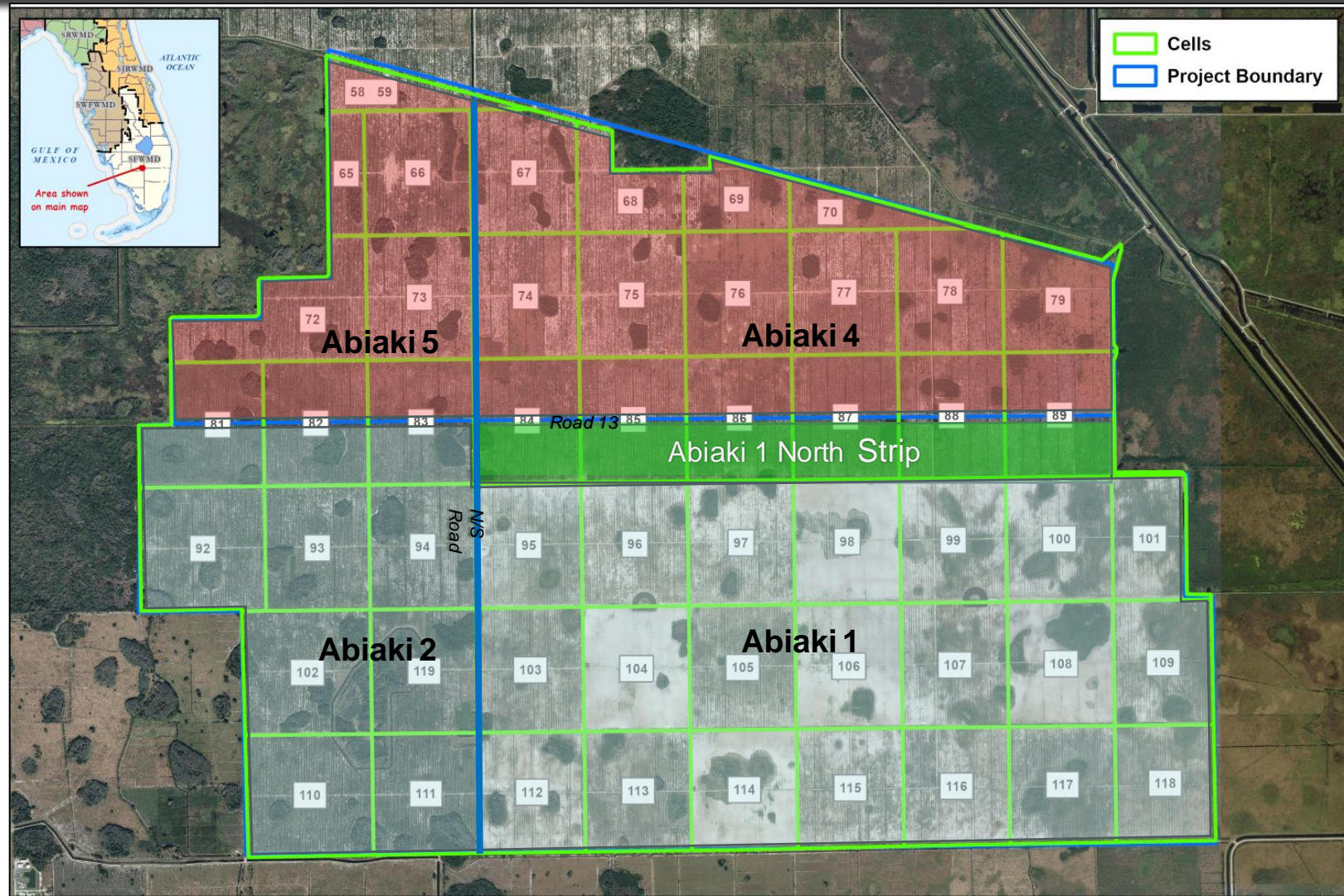
Ecological Monitoring



Land Management Efforts



- Native Plantings/Native Seeding – Focus on Abiaki 2 and “North Strip” of Abiaki 1
- Invasive Species Treatments Throughout the Site, including Abiaki 4 and 5 Post Citrus Tree Removal



Functional Unit Release

Restoration Activity	Benchmark/Percent of Units Released
Administrative/Legal	Record Permit 5%
Construction: Level 1	Clear Citrus Groves 10%
Construction: Level 2	Level Beds 15%
Construction: Level 3	Backbone Infrastructure 25%
Biological: Level 1	Restoration Planting 20%
Biological: Level 2	Ongoing Restoration Activities 15%
Biological: Level 3	Final Permit Compliance 10%
	TOTAL 100%



Functional Unit Release



RELEASED AS OF 2023*			
Date	Activity Description	Units Released	% of FUs
7/28/2020	Permit Recorded (5%)	215.17	5%
4/1/2021	Partial Phase I - Construction (Level 1)	147.57	4%
4/1/2021	Partial Phase I - Construction (Level 2)	221.36	6%
4/1/2021	Partial Phase I - Biological (Level 1)	295.14	7%
*Release request made 5/23. Awaiting word from ACOE	Abiaki 2 Construction Level 1 Construction Level 1 & 2 Cells 95, 96, 97, 103	161.46	4%
TOTAL		1040.7	26%

Pending / Anticipated Functional Unit Release 2024 (Will Be Based on 2023 Monitoring Report)		
Year	Pending units	% of FUs
2024	178.21	4%

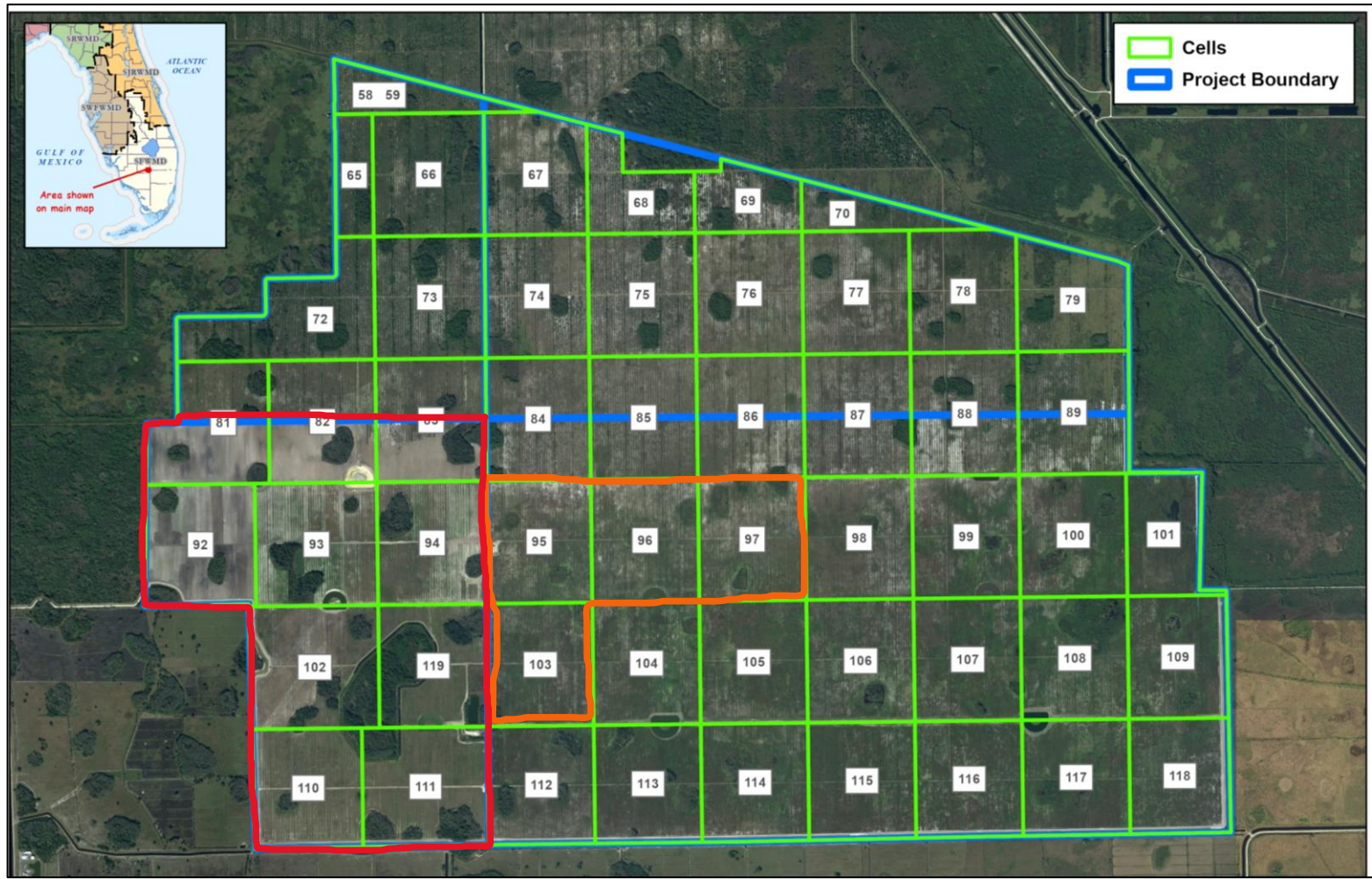
MDLPA Needed Project
 Functional Units: ~4,000
 Abiaki Prairie Project Anticipated
 Functional Units: ~4303.4
 No credit release requested in 2022

Functional Unit Release



Construction Level 2
Abiaki 2

Biological Level 1
Cells 95, 96, 97, 103



Discussion

