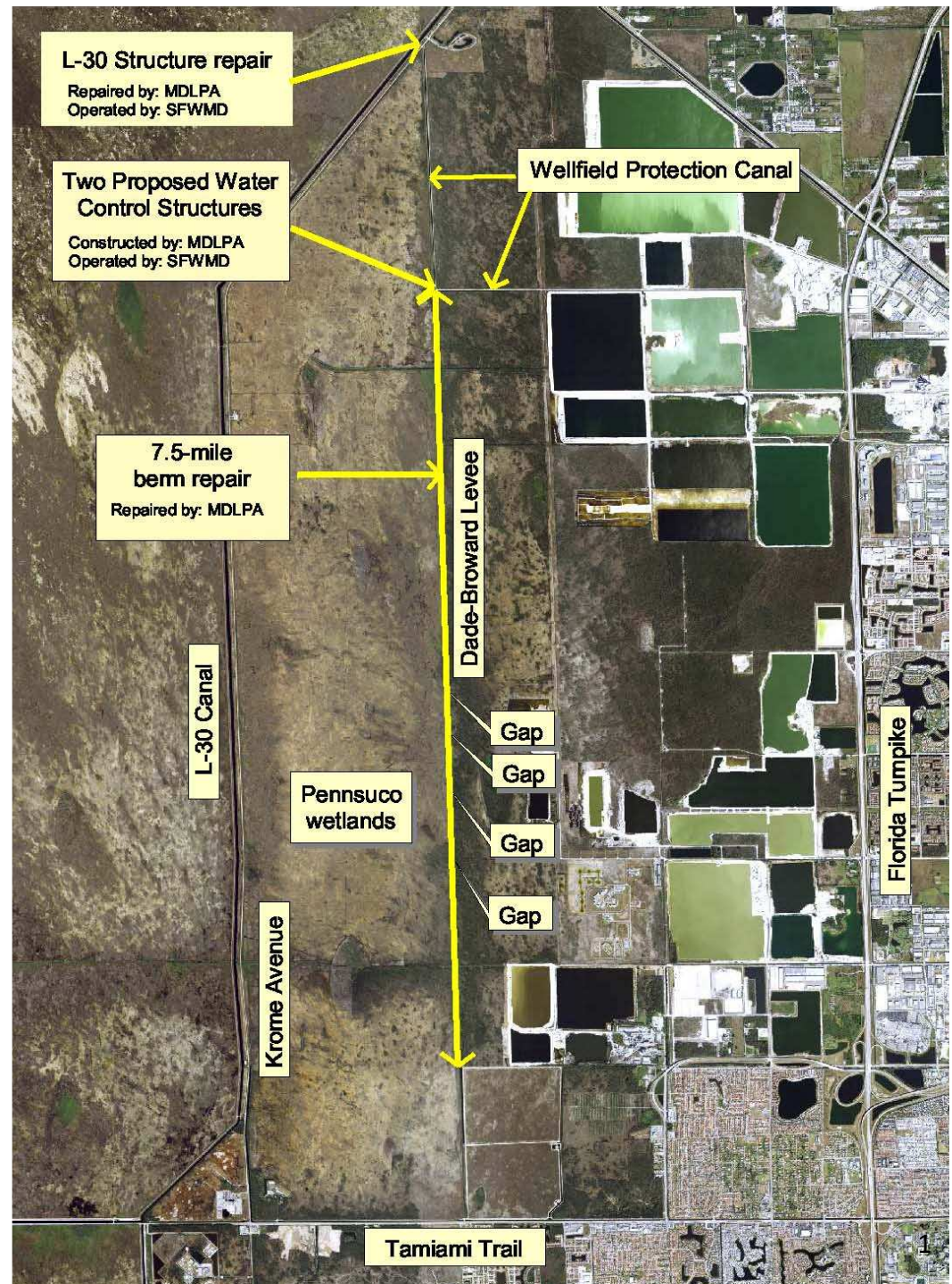


# Dade-Broward Levee Project

Task 1: 7.5 mile berm repair  
completed 2016

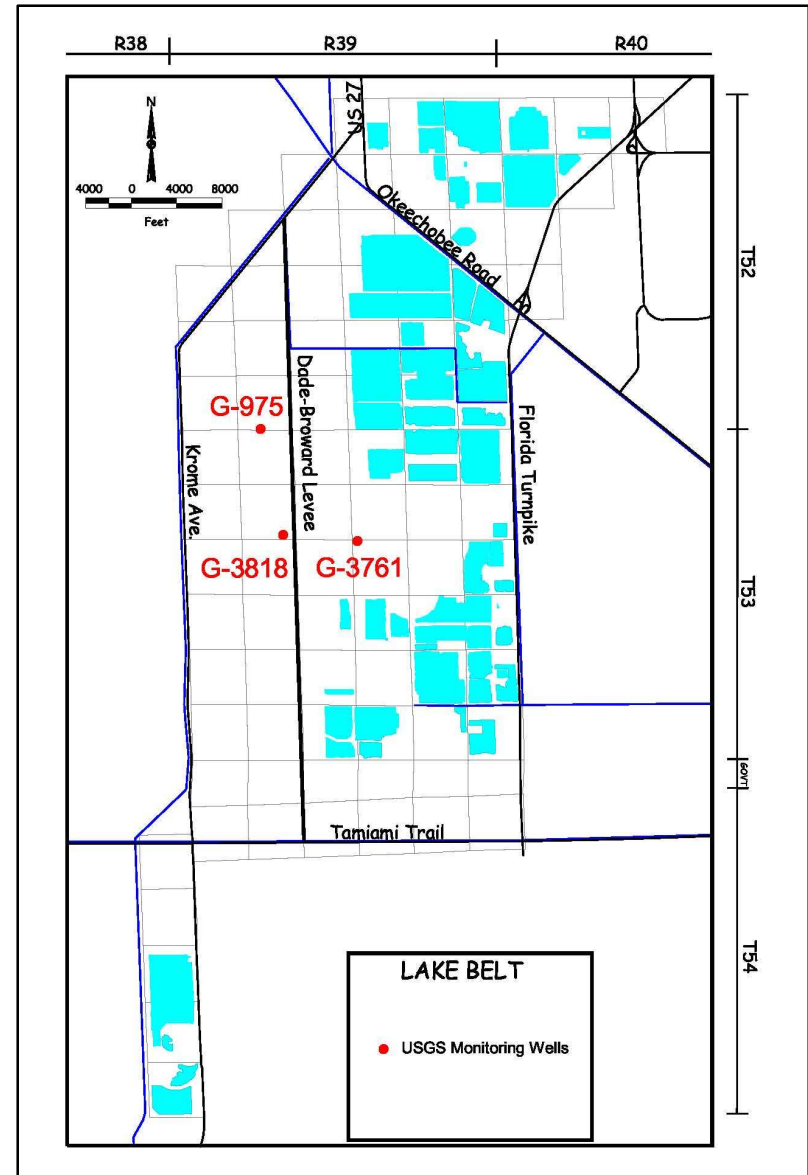
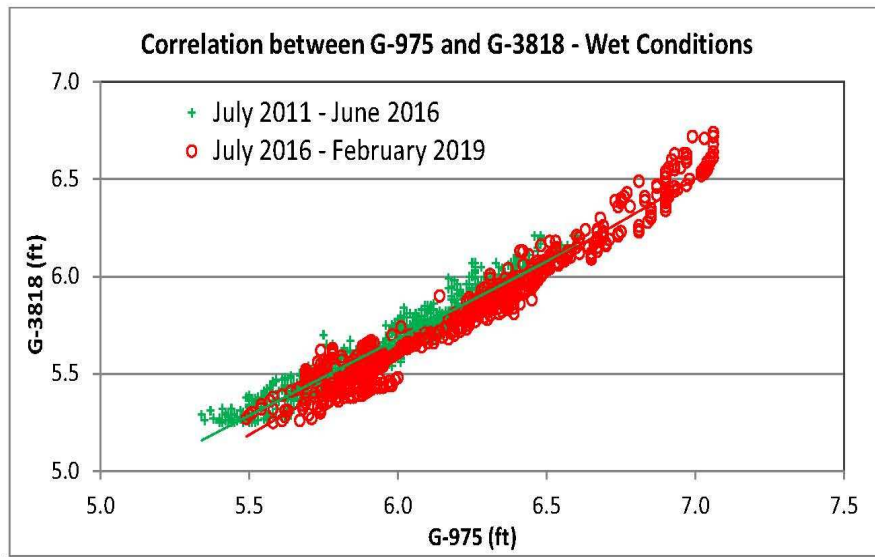
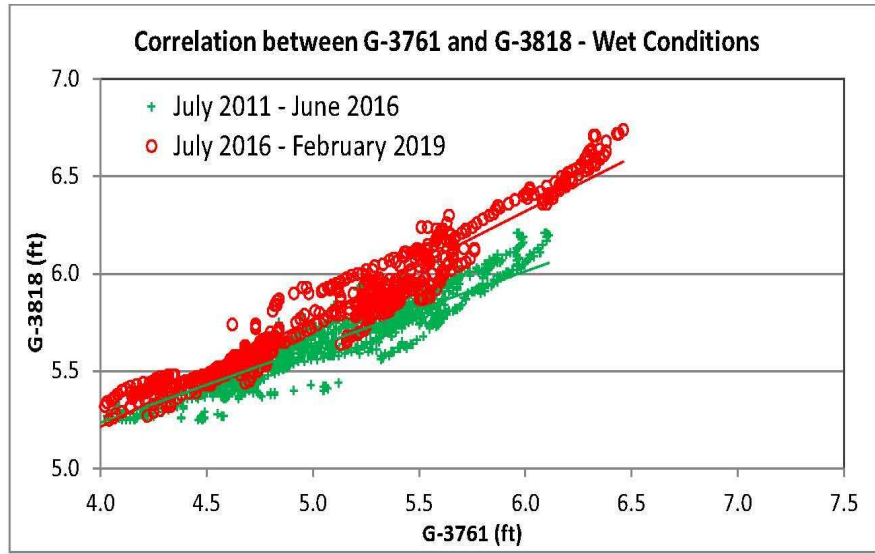
Task 2: two proposed water  
control structures  
completed 2018

Task 3: L-30 structure repair/  
remote control operation  
design review and cost  
estimate complete



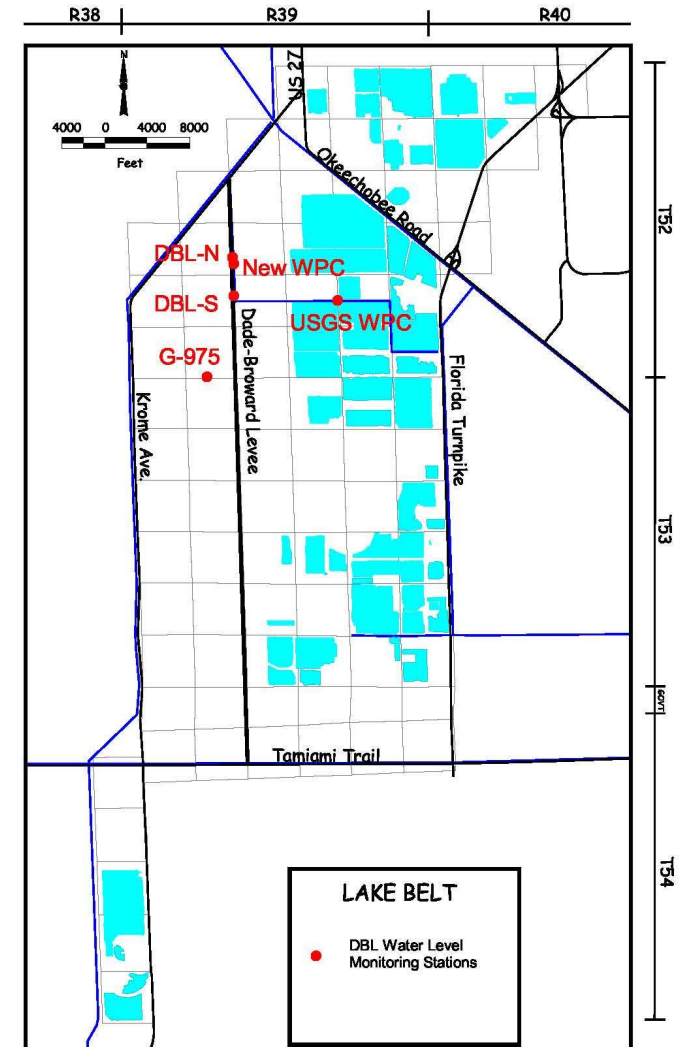
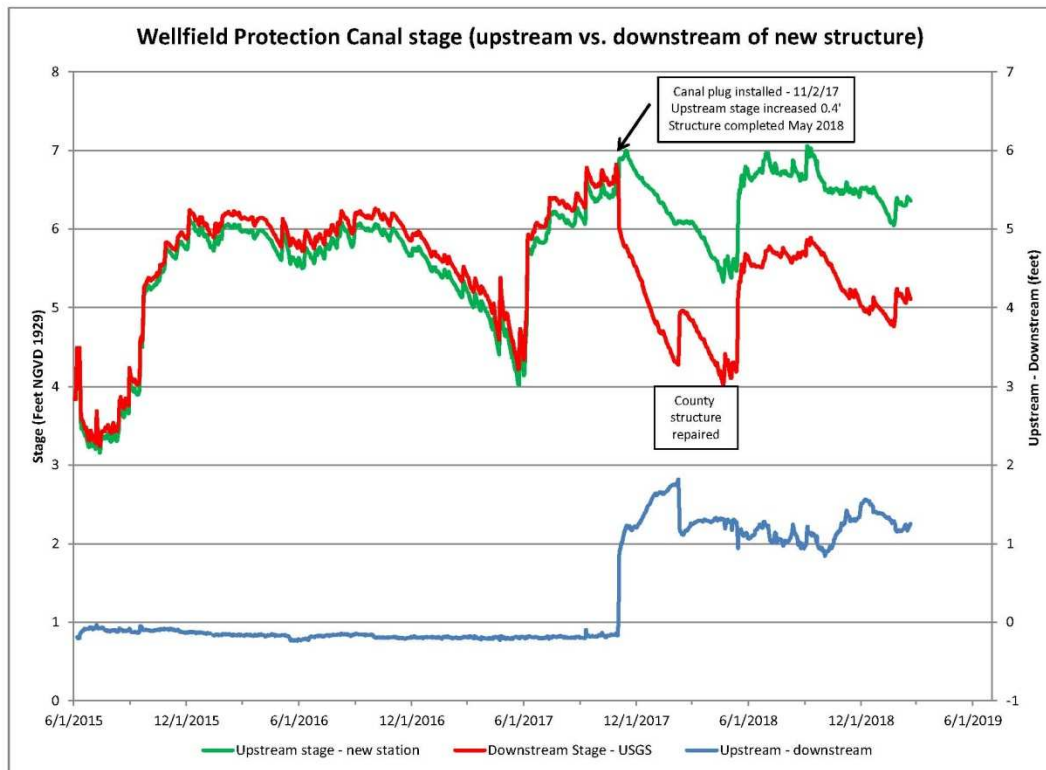
3/28/2019

## Berm Repair (2016)

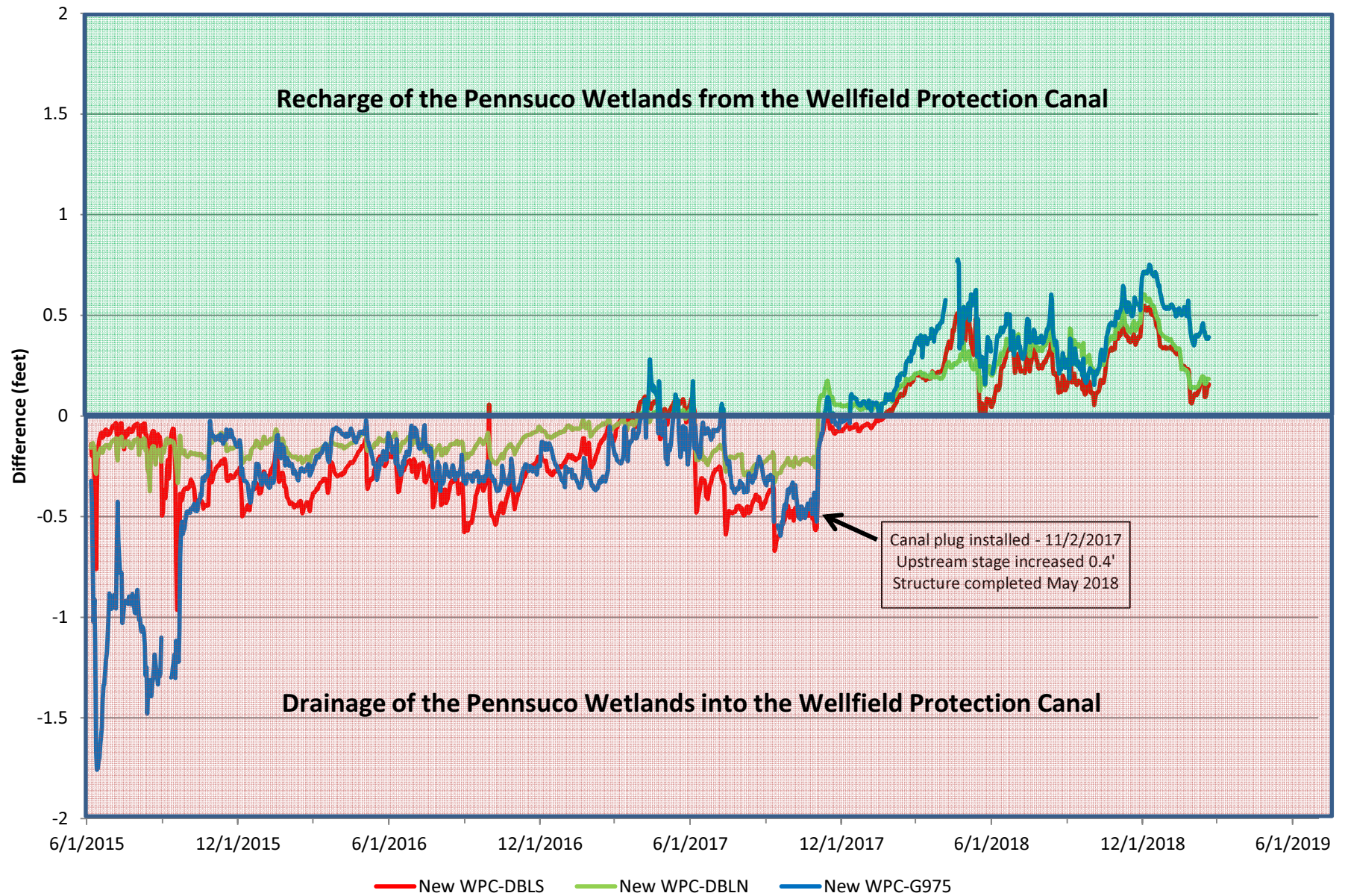




## New West WPC Structure (2018)

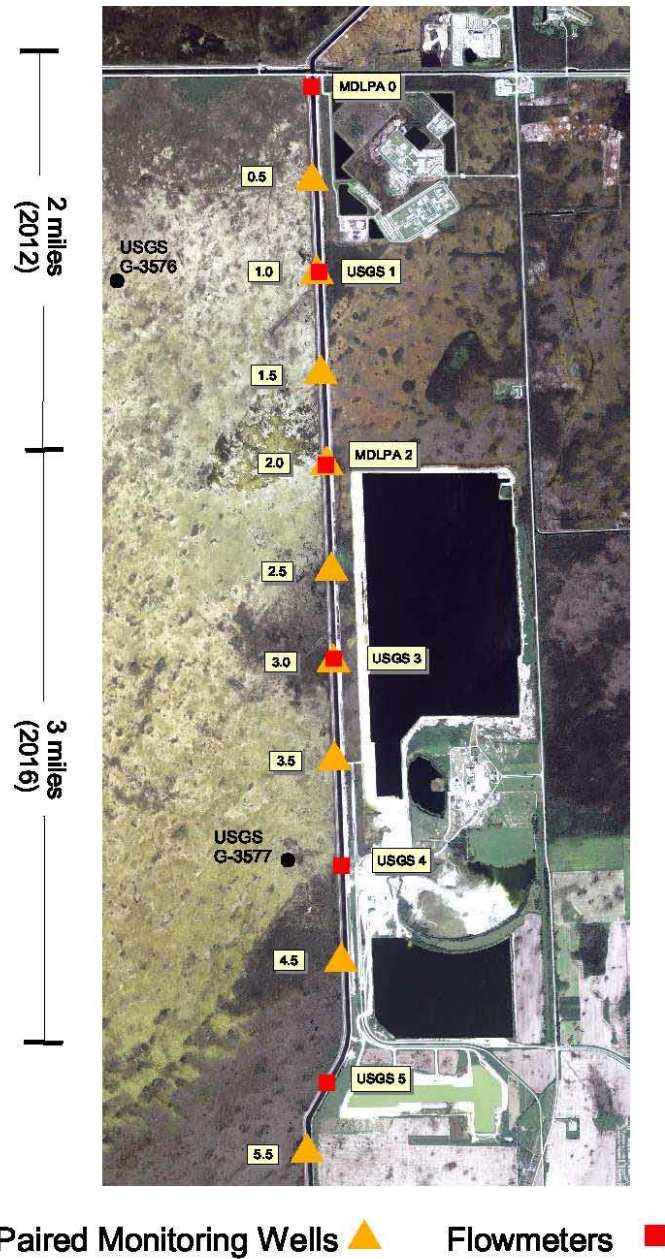


## Wellfield Protection Canal vs. Pennsuco wetland water levels



# L-31N Updated Monitoring Program

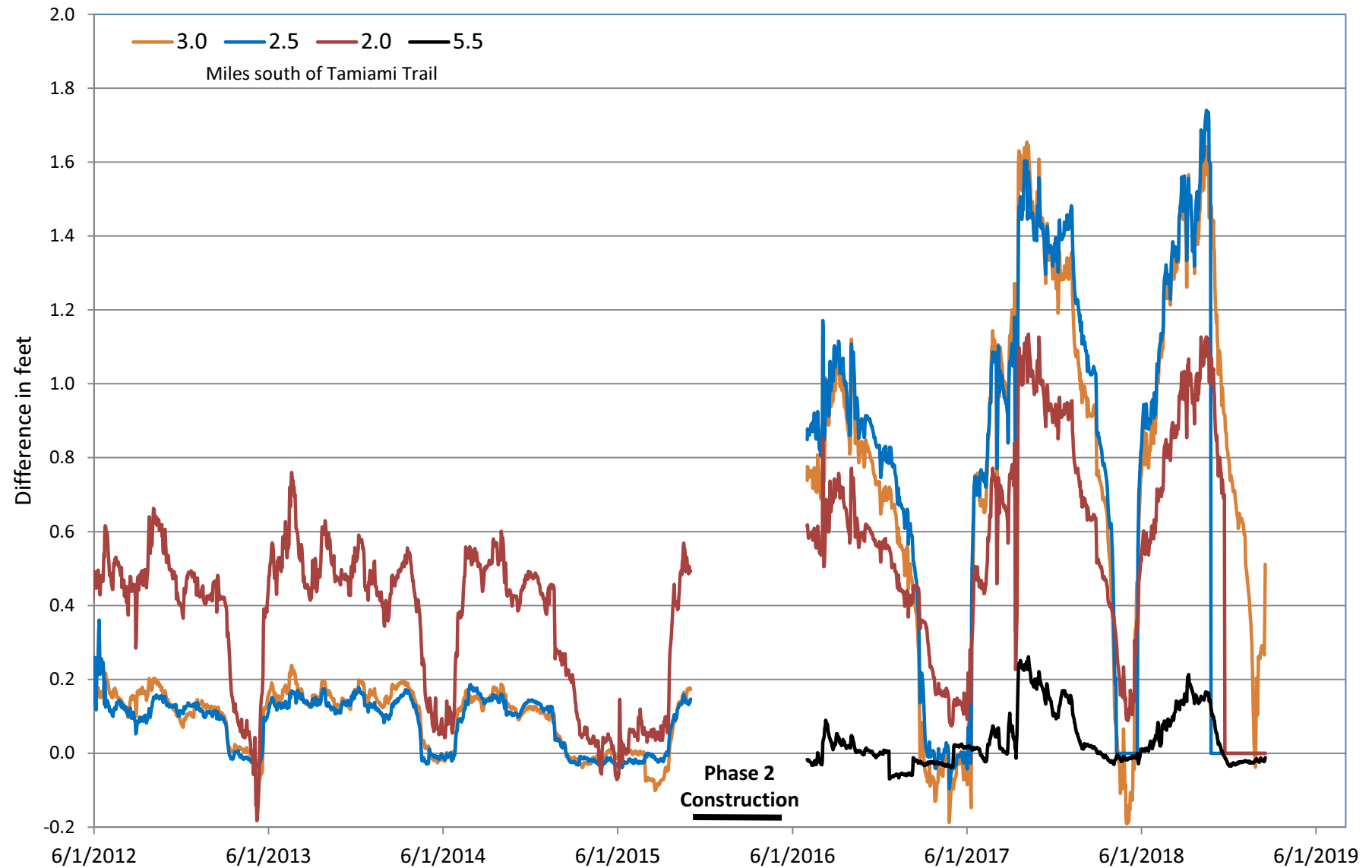
New wells and dataloggers  
have been installed



## Groundwater Stage Difference Across Barrier

(Difference between paired water table wells upstream and downstream of the barrier at each specified location)

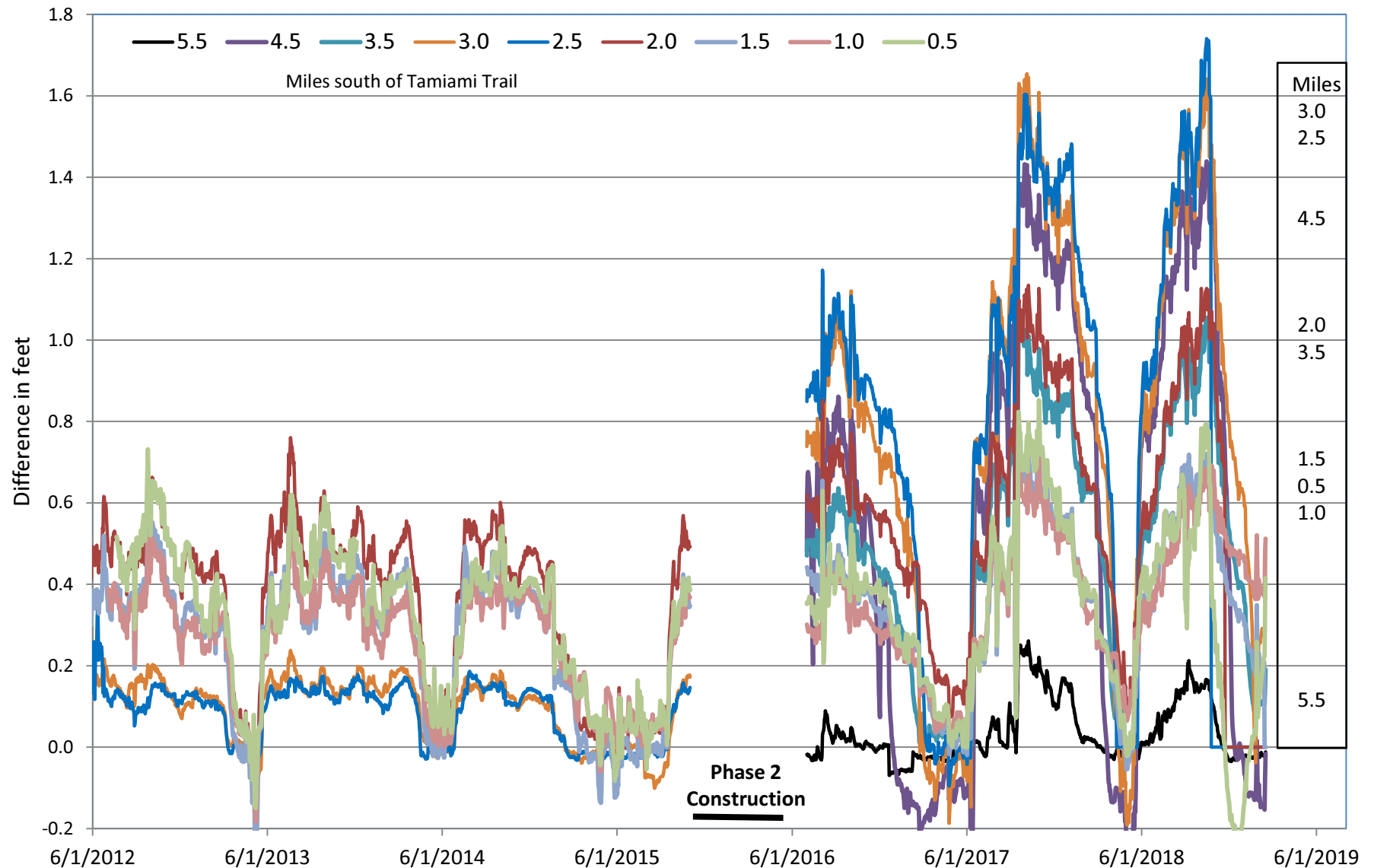
The northern 2 miles of barrier were completed in 2012. The remaining 3 miles were completed in April 2016.



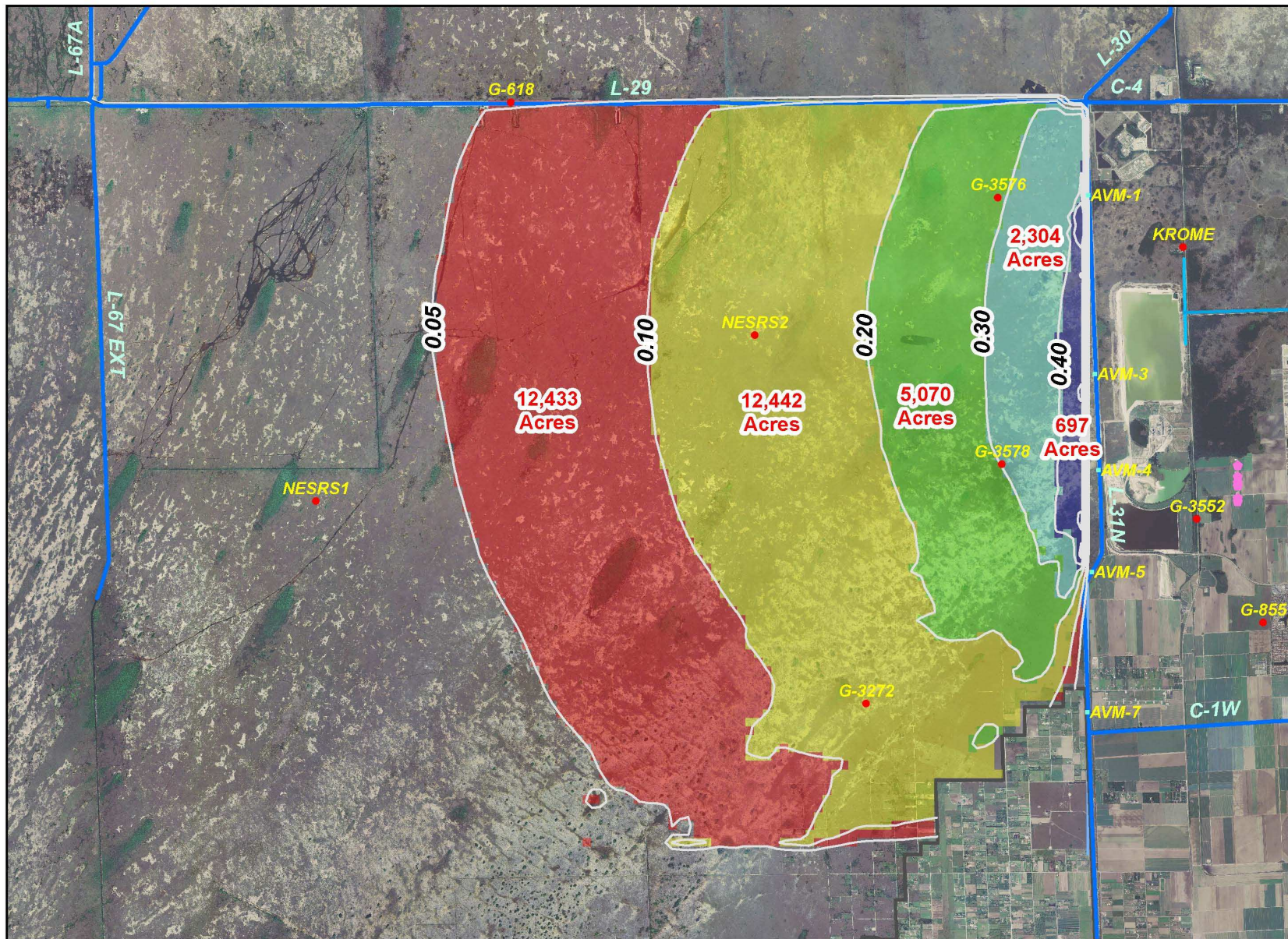
# Groundwater Stage Difference Across Barrier

(Difference between paired water table wells upstream and downstream of the barrier at each specified location)

The northern 2 miles of barrier were completed in 2012. The remaining 3 miles were completed in April 2016.







**Effect of a 5-Mile Barrier Wall on Groundwater Levels Inside the ENP**  
**Barrier Depth: 30 ft; Daily Average: 7/1/2008-10/31/2008 (Wet)**