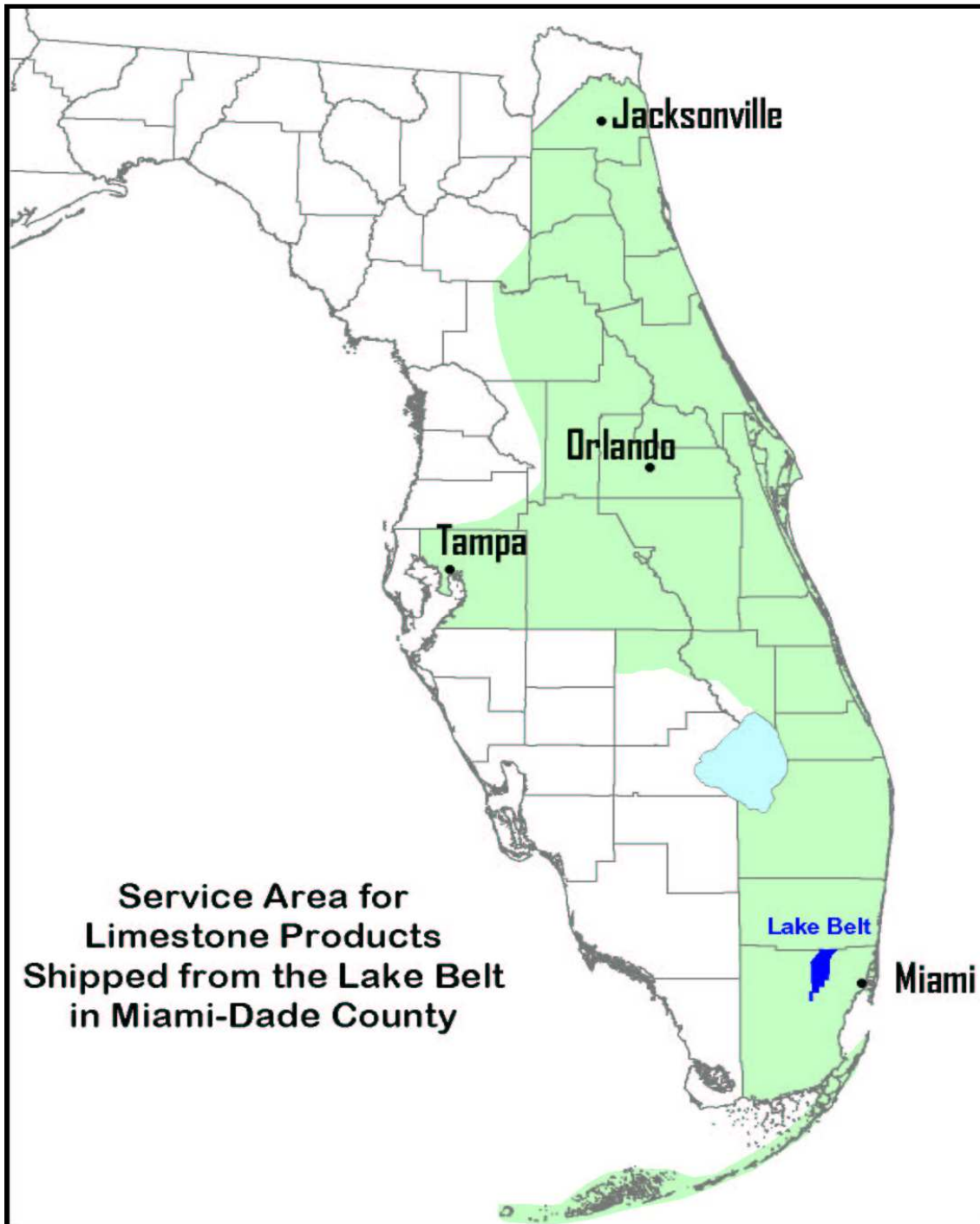


A Brief Introduction to the Lake Belt

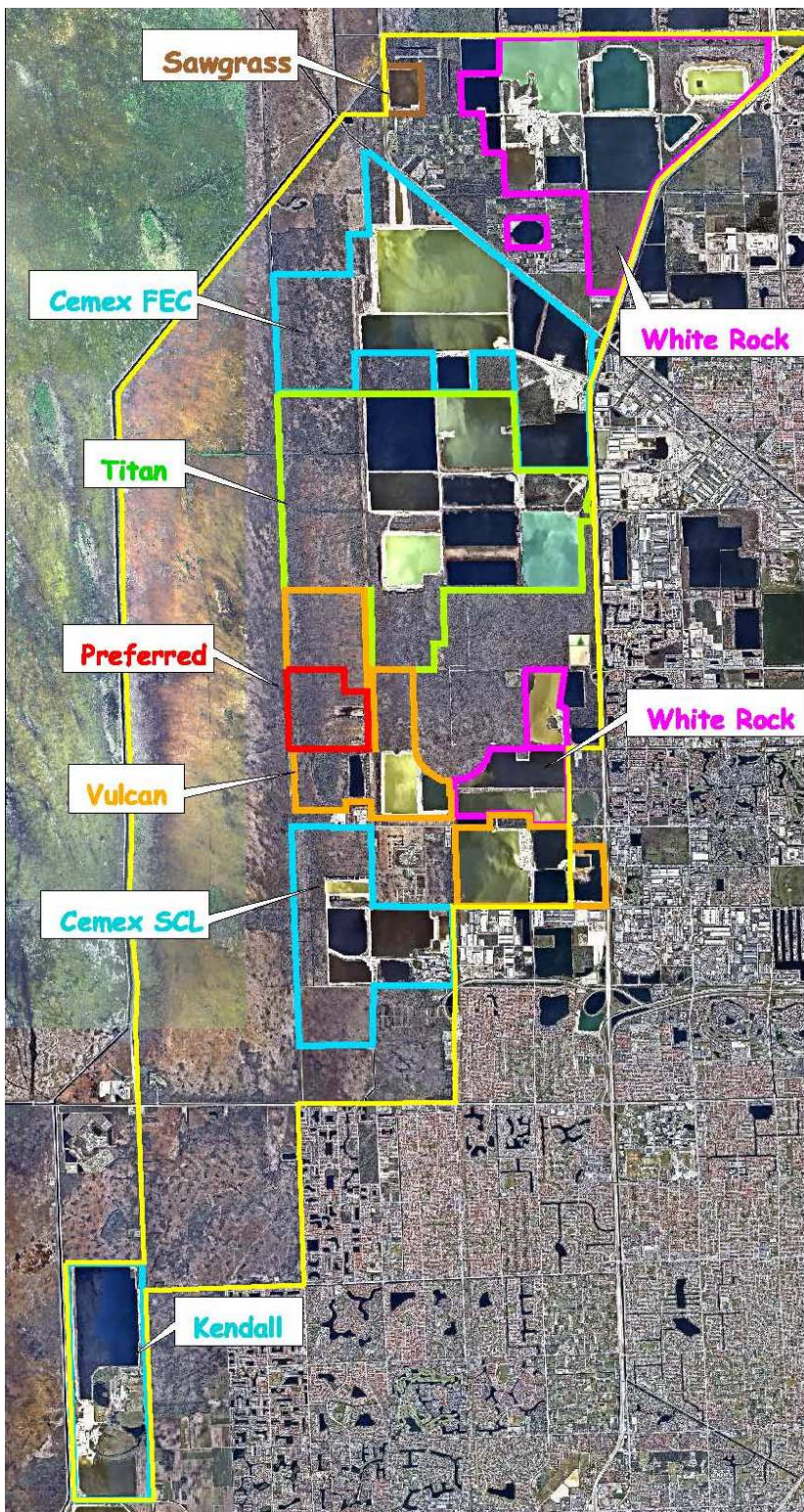


Lake Belt Limestone is a state-wide resource

“...Florida’s highest quality limestone, the rock that makes the best roads and the best concrete for high rise buildings only comes from the Lake Belt Region.”



FDOT Strategic Resources Study, 2009



Florida has 6 very large mines that are ranked in the top 20 in the country. Five are in the Lake Belt.

- Cemex FEC (#1)
- White Rock North (#2)
- Titan (#4)
- Cemex Krome (#14)
- Florida Rock

The Top Mines must include:

- Large Capacity
- High Capital Investment
- Energy Efficiency

The Lake Belt Timeline

- 1992 *Official Planning begun*
- 1999 *Lake Belt Plan approved*
- 2000 *Corps EIS on LB Plan*
- 2002 *Federal permits issued*
- 2006 *Federal permits vacated*
- 2009 *New EIS completed*
- 2010 *New LB permits issued*
Phase 1 Mining Approved
Phase 2 Mining Conditioned
- 2020 *Approval of Phase 2 permits*



Northwest Dade County
Freshwater Lake Belt Plan
Making a Whole, Not Just Holes

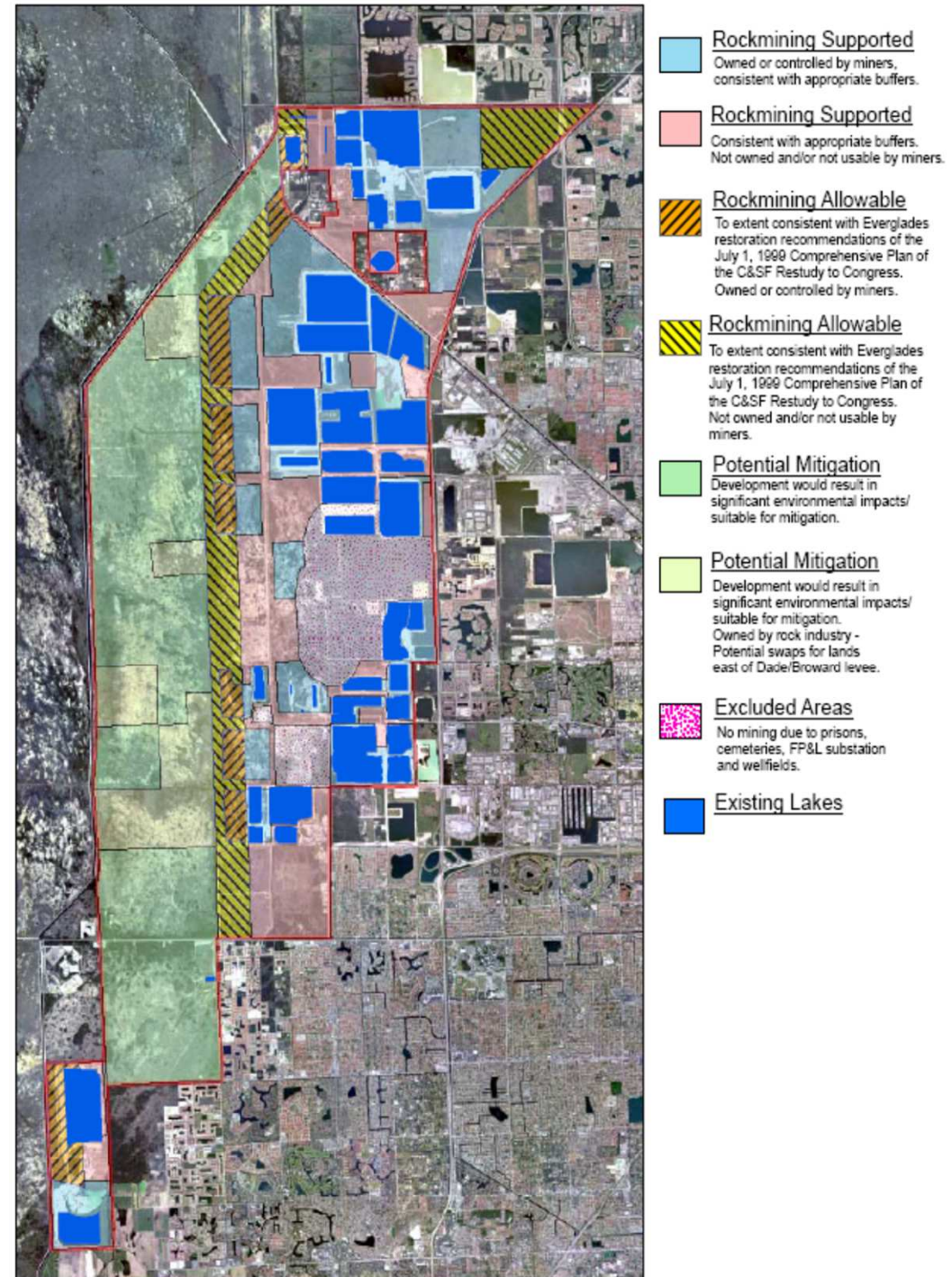
Lake Belt Plan

- Legislature-established study
- Multi-year process in 1990's - developed by a committee of agency, community, industry, and environmental leaders
- SFWMD – lead agency
- Long term plan as opposed to piecemeal permit-by-permit approach
- Final Plan adopted by Legislature as part of the Lake Belt statute

Plan Highlights

- State Fee on sales of limestone products from the Lake Belt
- Acquire and restore 12,000+ acres of wetlands in Pennsuco
- Protect Miami-Dade's water supply
- Mined lands become CERP reservoirs, wellfield protection zones, or recreational areas
- Predictable future for mining companies
- Multi-Agency Implementation Committee

Initial "Lake Belt Plan" consistent permits were issued by the DEP & Corps in 2002. Additional DEP/Corps permits in 2010 & 2020



Northwest Dade County Freshwater Lake Belt Plan

Mitigation Fee

- **\$141 million collected through 2023**
- \$0.05 per ton fee started in 2000. 2002 Permit tables estimated fee collections of \$96 million through 2023.
- Fee has increased /decreased over time based on project costs, while ensuring that mitigation is fully funded.
- Legislature adopted a new fee schedule in 2015 that gradually reduced the fee per ton. Fee is now back at original \$0.05 per ton.

Lake Belt Mitigation Plan (373.41492 F.S.)

- (6)(a) The proceeds of the mitigation fee must be used to conduct mitigation activities that are appropriate to offset the loss of the value and functions of wetlands as a result of mining activities and to conduct water quality monitoring to ensure the protection of water resources within the Lake Belt Area. Such mitigation may include the purchase, enhancement, restoration, and management of wetlands and uplands in the Everglades watershed, the purchase of mitigation credit from a permitted mitigation bank, and any structural modifications to the existing drainage system to enhance the hydrology of the Miami-Dade County Lake Belt Area or the Everglades watershed.
- (6)(b) Expenditures of the mitigation fee must be approved by an interagency committee.
- (8)(a) The interagency committee established in this section shall annually prepare and submit to the governing board of the South Florida Water Management District a report evaluating the mitigation costs and revenues generated by the mitigation fee.

Pennsuco Wetlands Restoration

Acquisition/Restoration:

3100 acres

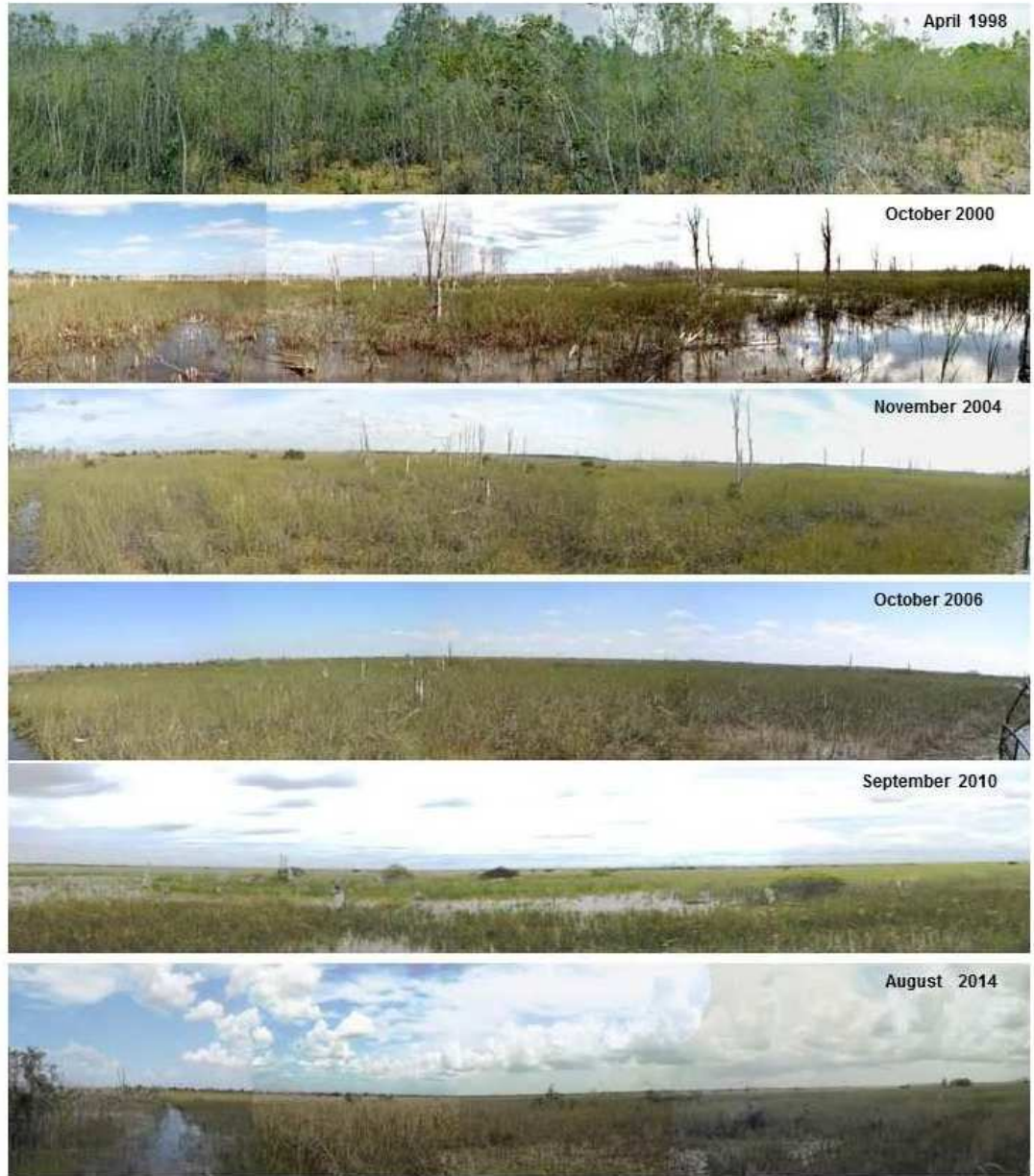
Restoration only:

4925 acres

Total Restored: 8,025 acres

**Includes funding for long-term
management by SFWMD**

Funding: \$40 million



Everglades National Park Enhancement

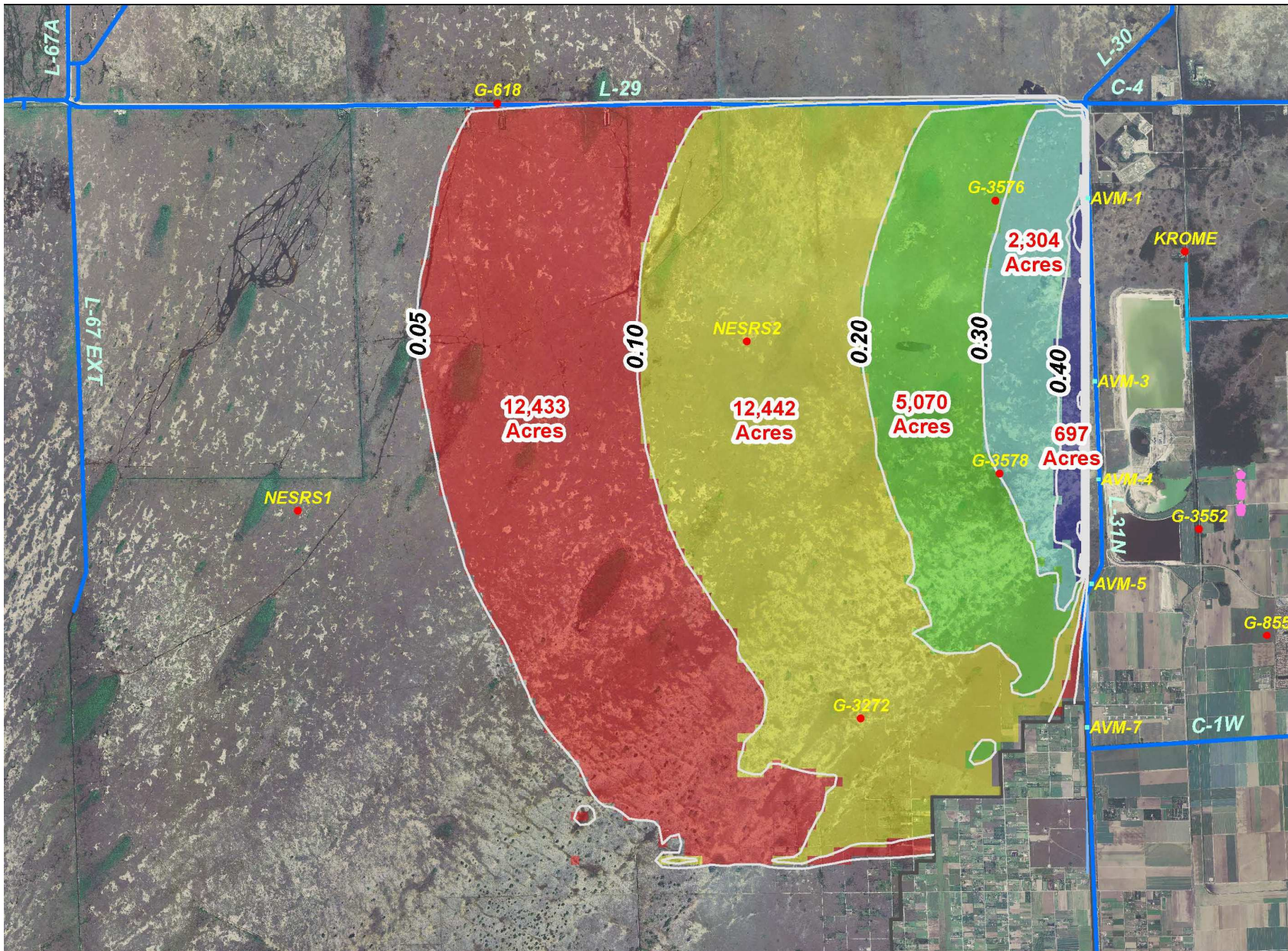
5-mile long - 35' deep
seepage barrier to
enhance hydrology in
the National Park

Benefits 20,000+ acres
in ENP

Funding: \$18.5 million



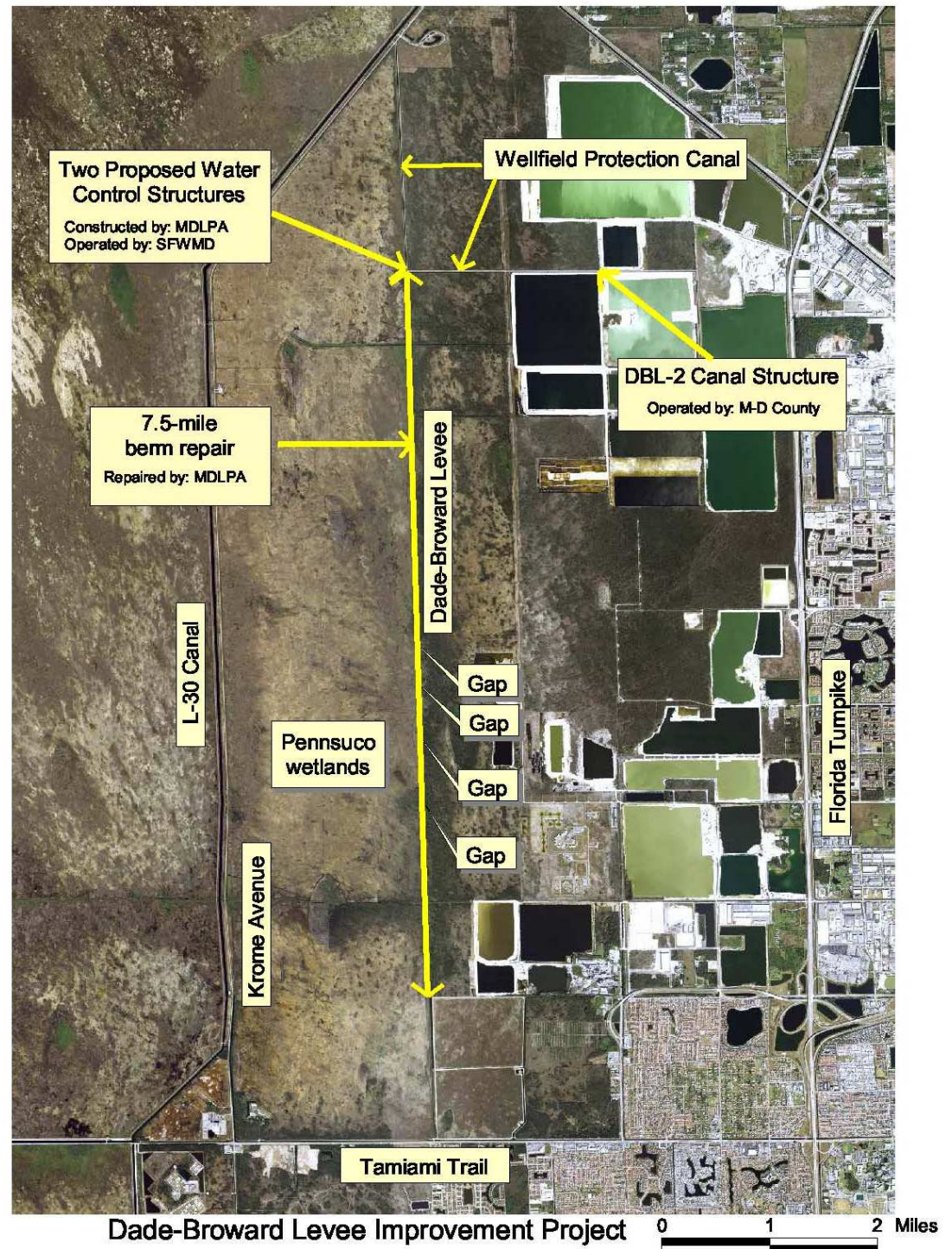
Simulated Effect of a 5-mile Seepage Barrier on the Average Wet Season Stage in Everglades National Park



Dade-Broward Levee Project

7.5-mile berm repair and construction of two new water control structures to enhance hydrology in the Pennsuco wetlands

Funding: \$8.9 million



Field investigation showed multiple breaches in the Dade-Broward Levee



Wellfield Protection
Canal structure



Pennsuco Wetlands
Diversion structure



Abiaki Prairie restoration project

Acquisition/Restoration:

**2600 acres
(to date)**

Completed Project:

6300 acres

Funding: \$62 million



Abiaki Prairie Restoration Project

- Restores historic Everglades conditions to 6,300 acres of former citrus grove
- Improves water quality in the Everglades watershed
- Restores historic habitat
- Expands habitat area for listed plant and animal species
- Promotes the restoration of a self-sustaining ecosystem
- Provides sufficient credits for full Lake Belt Plan mine-out

