

Summary of June 6, 2014, Regulatory Peer Review Meeting

Prepared by Steve Sarley

The meeting opened with a discussion of the latest version of the proposed changes to *Volume II* of the *Environmental Resource Permit Applicant's Handbook*. The proposed changes to Volume II include procedures for evaluating applications involving discharges to water bodies not meeting state water quality standards, or impaired water bodies. Several meeting attendees expressed concern that, in the case of a given site discharging to an impaired water body, it will not be possible to demonstrate water quality improvement if the given site incorporates a water re-use system. (Note: this is essentially a continuation of the discussion held during the Regulatory Peer Review meeting held on March 7, 2014 with the addition of specific discussion about sites with water re-use systems in place.)

During this meeting's discussion, Sharon Trost and other District staff emphasized that:

- it is not the intent of the proposed changes (rule) to discourage water re-use;
- the rule shows ways that impaired waters issues can be addressed and;
- there are no new rules in the rule.

Following discussion among meeting attendees, Ms. Trost further commented that with this rule, permit review will be performed the same way as it has been performed for the past ten years.

Gary Ward (meeting attendee) commented that specific language in the rule causes concern because of legal interpretation.

Lennart Lindahl introduced Ed Artau as the District's Interim General Counsel. Following introductory remarks from Mr. Artau, Mr. Lindahl went on to make the following points regarding the rule text:

- the rule essentially codifies the "Bob Brown Memo" (memo);
- the rule memorializes the memo;
- the rule requires the same level of analysis as has been required for the past ten years and;
- the treatment train efficiency equation will be removed from the rule text.

In response to a question from a meeting attendee, Tony Waterhouse made the point that the rule has nothing to do with the Numeric Nutrient Control criteria, and that the rule only looks at impaired waters on-site.

Liz Perez, a guest attendee, presented the following information on FEMA mapping:

- FEMA is re-evaluating LIDAR data;
- FEMA's proposed changes do not cover the entire county of Palm Beach;
- new flood maps will be released throughout this summer;
- there will be a complete re-mapping of coastal areas within Palm Beach County;
- the City of West Palm Beach is performing a separate analysis on lands within its boundaries.

The meeting concluded with discussion, led by Ms. Trost, of the new state law regarding the registration of lobbyists. Ms. Trost made the following points:

- the District will have a link on its website regarding the registration process for lobbyists;
- the registration of lobbyists was not the idea of the District;
- it is not the intent of the District for the lobbyist registration process to be complex.

Palm Beach County DFIRM Update

June 6, 2014
SFWMD Peer Review
Meeting
Elizabeth Perez
lperez@collectivewater.com



May 2013



- **Palm Beach County DFIRMs**
- Countywide DEM
- Multiple studies/sources
 - No new studies by FEMA
- DFIRM Production



November 2013



- **Multiple submittals**
 - Letters
 - Hard copies
 - Electronic data
- **December – deadline extended....**

February 2014



- **Fewer, more focused submittals**
 - Letters
 - Hard copies
 - Electronic data

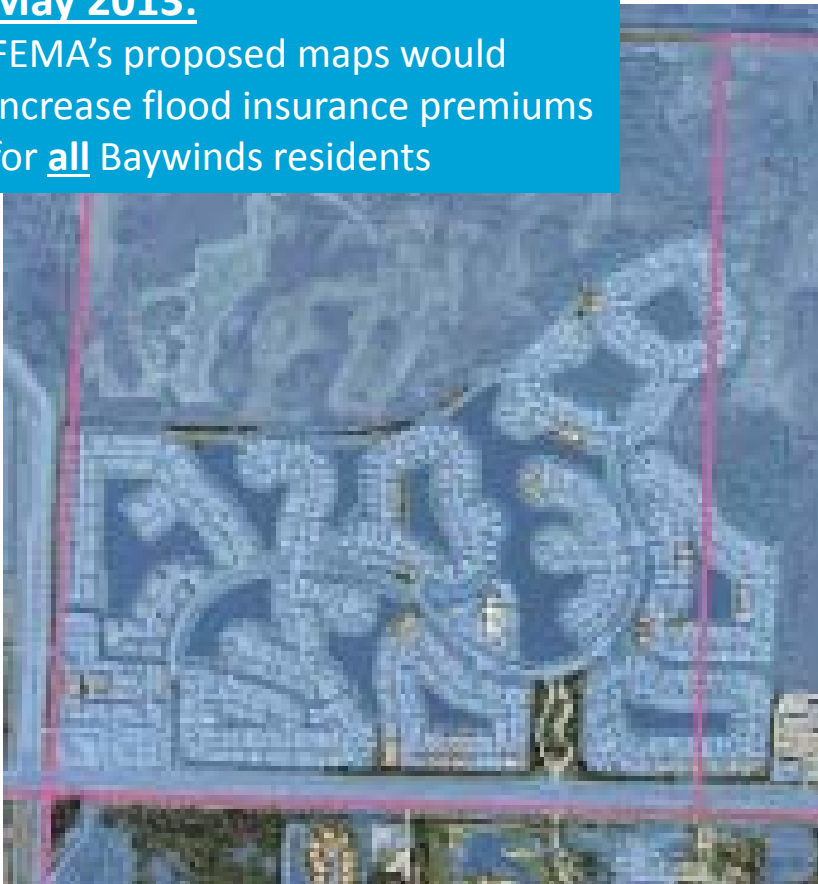
“Triage”

Flood Zone Comparison



May 2013:

FEMA's proposed maps would increase flood insurance premiums for all Baywinds residents



May 2014:

City's revised data approved by FEMA. No parcels remain in high hazard flood zones.



Resident Savings - Citywide

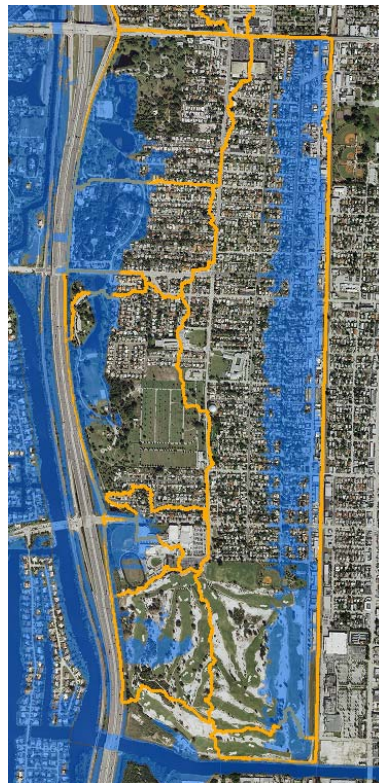


- 7,200+ Parcels Affected in May 2013
- City has successfully removed 4,990 parcels from erroneous high risk flood zones
- **Current Projected Annual City-wide Savings = Approx. \$4.5 - 6 million**

Eastern WPB



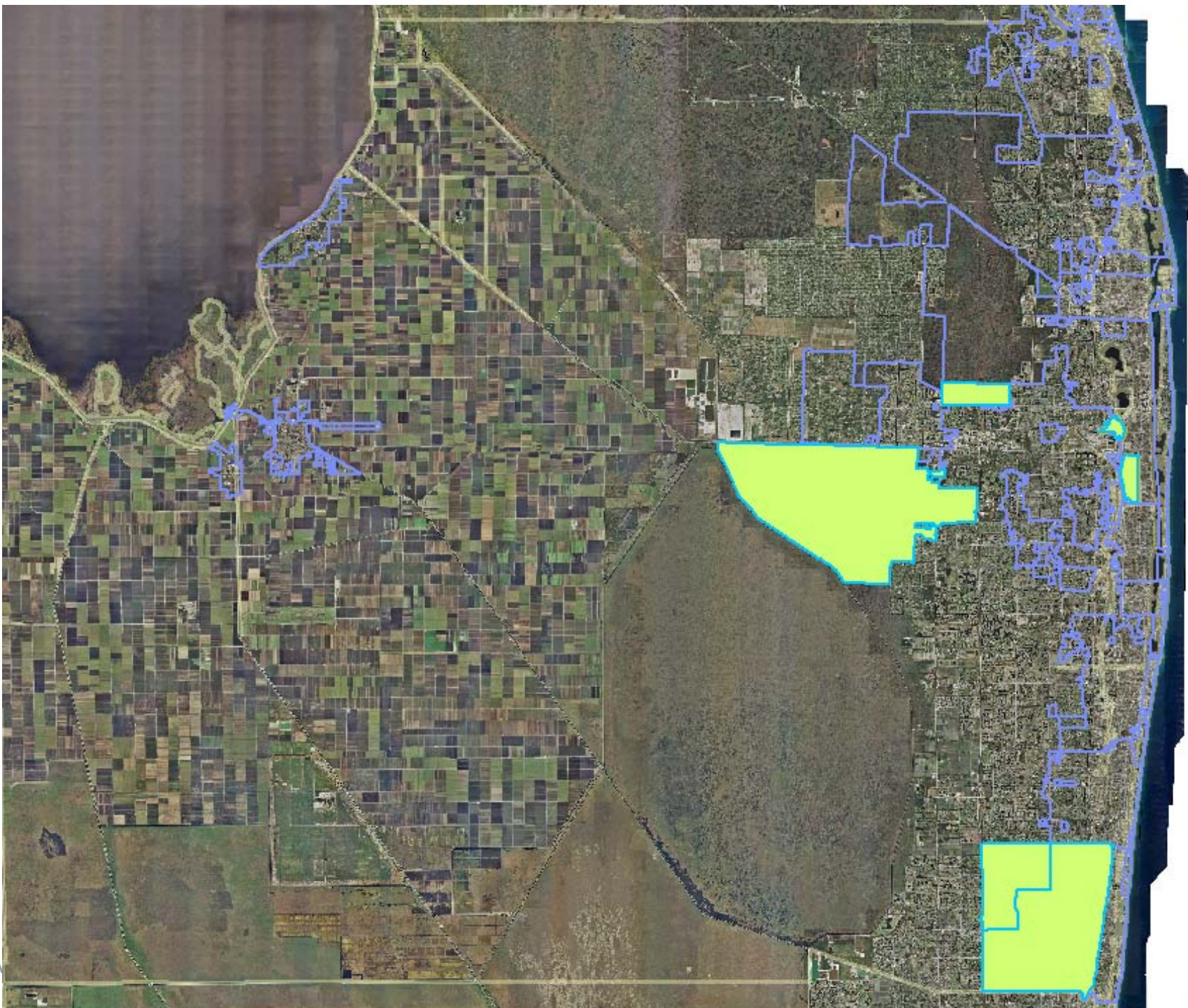
Subbasins



AE Zone – May 2013



Downscaled Model Results
March 2014



Final Thoughts



- FEMA has shifted responsibility to local NFIP participants
- Downscaling and adding overflows to C-51 model
- Modernized FP management
 - Smart SFWMD/Local model linkages
- More modernized data collection at County and municipal level