



**South Florida Water Management District  
Regulatory Peer Review Forum  
October 8, 2010  
9 a.m. – 11:00 a.m.  
SUMMARY**

**Attendees:**

Alan Wertepny  
Ed Weinberg  
Gerry Ward  
Dan Clark  
Paul Whalen  
Rebecca Elliott

Mock-Roos  
EW Consultants  
Consulting Engineer  
Clark & McCarthy  
TAC Environmental  
FDACS/OAWP

Tony Waterhouse  
Damon Meiers  
Laurie Donovan  
Anita Bain  
Laura Corry  
Steve Sarley  
Bob Brown

SFWMD – Water Resource Regulation Staff  
SFWMD – Stormwater Division  
SFWMD – Water Resource Regulation Staff  
SFWMD – Water Resource Regulation Staff  
SFWMD – Palm Beach Service Center  
SFWMD – Water Resource Regulation Staff  
SFWMD – Water Resource Regulation Staff

**1. Opening Remarks – Tony Waterhouse**

Mr. Waterhouse opened the meeting at about 9:05 a.m.

**2. Organizational Changes in the Water Resource Regulation Department**

Bob Brown gave a presentation on the realignment/merging of Environmental Resource Regulation with Water Use Regulation.

- New Department name is Water Resource Regulation Department
- An organizational chart was distributed and discussed.
- Discussed Water Use enhanced coordination and communication
- Training of staff on agricultural issues will be stressed.

**3. Discussion on Natural Systems and Consumptive Use**

Anita Bain gave an update on the wetland harm issues workshops.

- A list of summarized comments and comments on monitoring issues from the workshops were distributed and discussed
- A Water Resource Advisory Committee Issues Team is scheduled for December 16<sup>th</sup> regarding wetland harm in West Palm Beach at 10:00am.

**4. Statewide Stormwater Rule**

Damon Meiers gave an update on the Statewide Stormwater Rule and Numeric Nutrient Criteria.

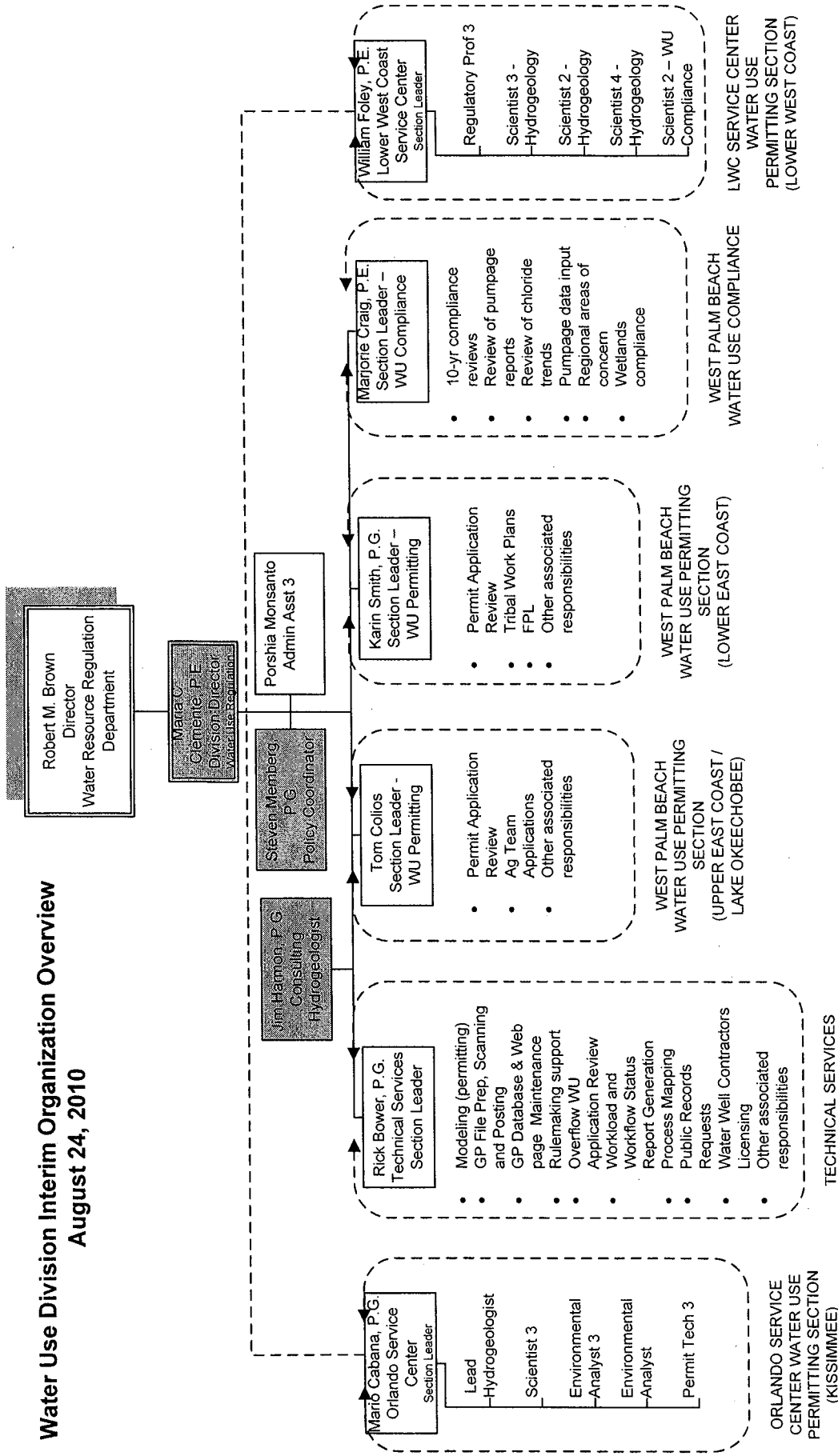
**5. Next meeting date/other topics/adjournment**

The next scheduled meeting date is Friday, December 3, 2010.

Future topics include NNC update.

Meeting was adjourned at 11:00am

# Water Use Division Interim Organization Overview August 24, 2010



# Public Workshop Comments

- Past wetland harm should only be calculated to the most recent renewal date.
- How far back does the data go?
- Consider the ongoing impacts of stormwater facilities and retention of water affecting downstream wetlands
- District should develop and maintain a publicly accessible hydrologic database and GIS coverages posting monitoring results in one place so that applicants can use other existing data
- ERP/WU should use a consolidated monitoring program for a project; also require sw/gw wells rather than staff gauges

# **Comments on Monitoring**

## **Issues**

- **Share Data**
- **Establish baseline wetlands**
- **Data on potential harm should consider full allocation usage vs incremental utilization**
- **Proposed conservation easements should allow for installation/data collection from monitoring wells.**
- **Consolidate data collection sites; no need for multi-agency data collection**