

# Water Quality to Everglades National Park (ENP)

Distributed December 15, 2009

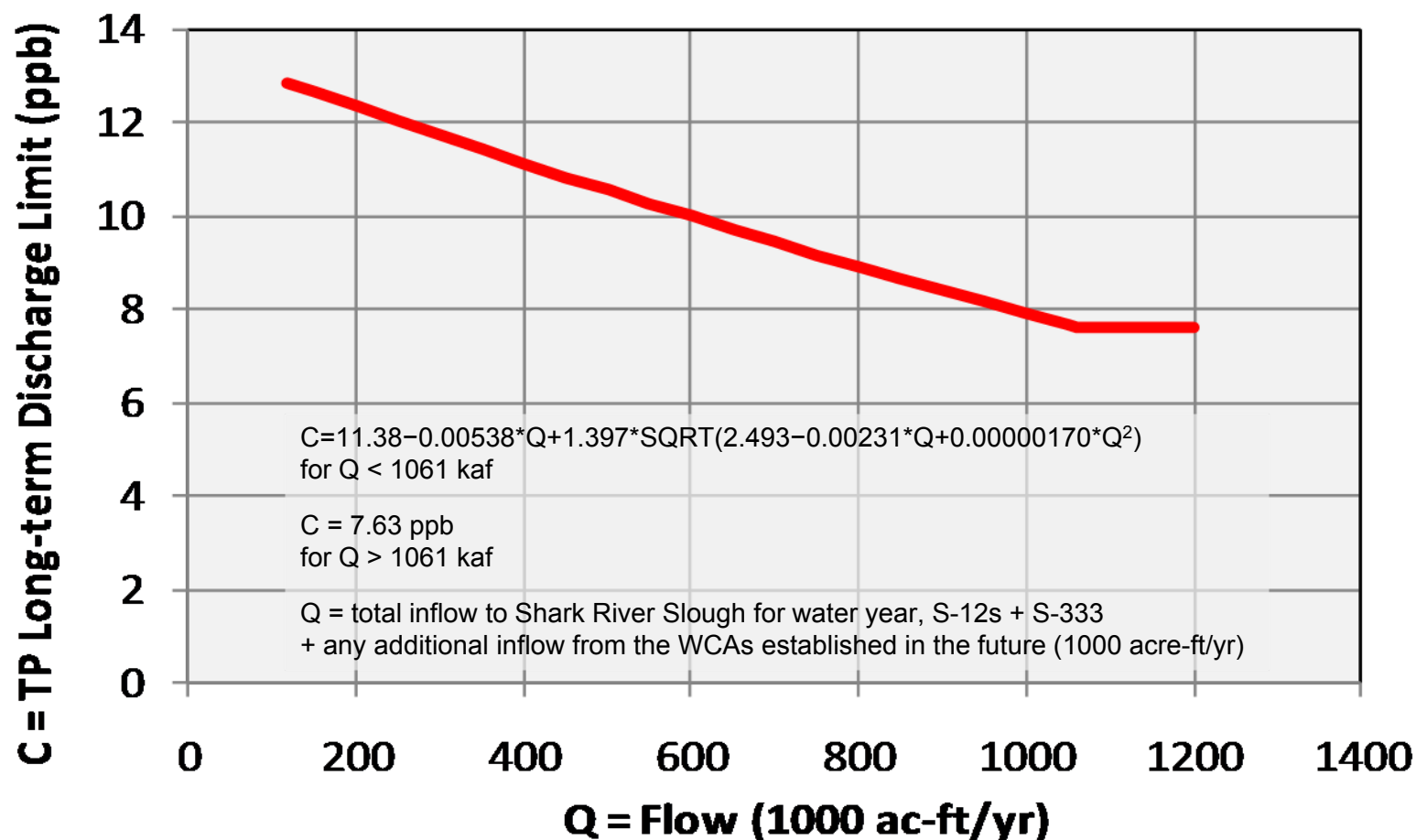
---

From a presentation by:  
**Calvin Neidrauer**  
**South Florida Water  
Management District**

## Water Quality to ENP

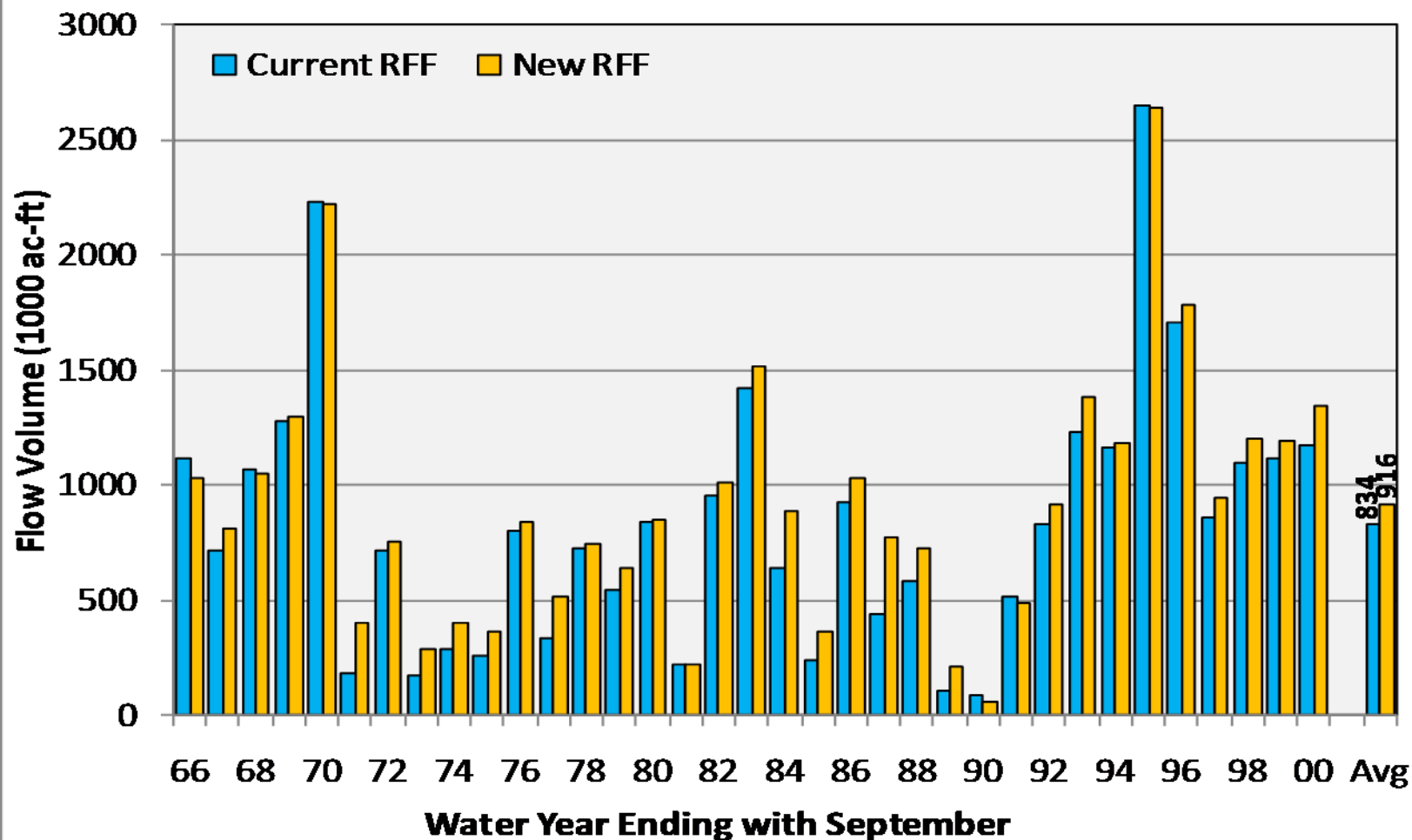
- Will increasing the flow to ENP increase the chances of exceeding the limits in the Settlement Agreement?

## Long-Term Discharge Limit & OFW Standard



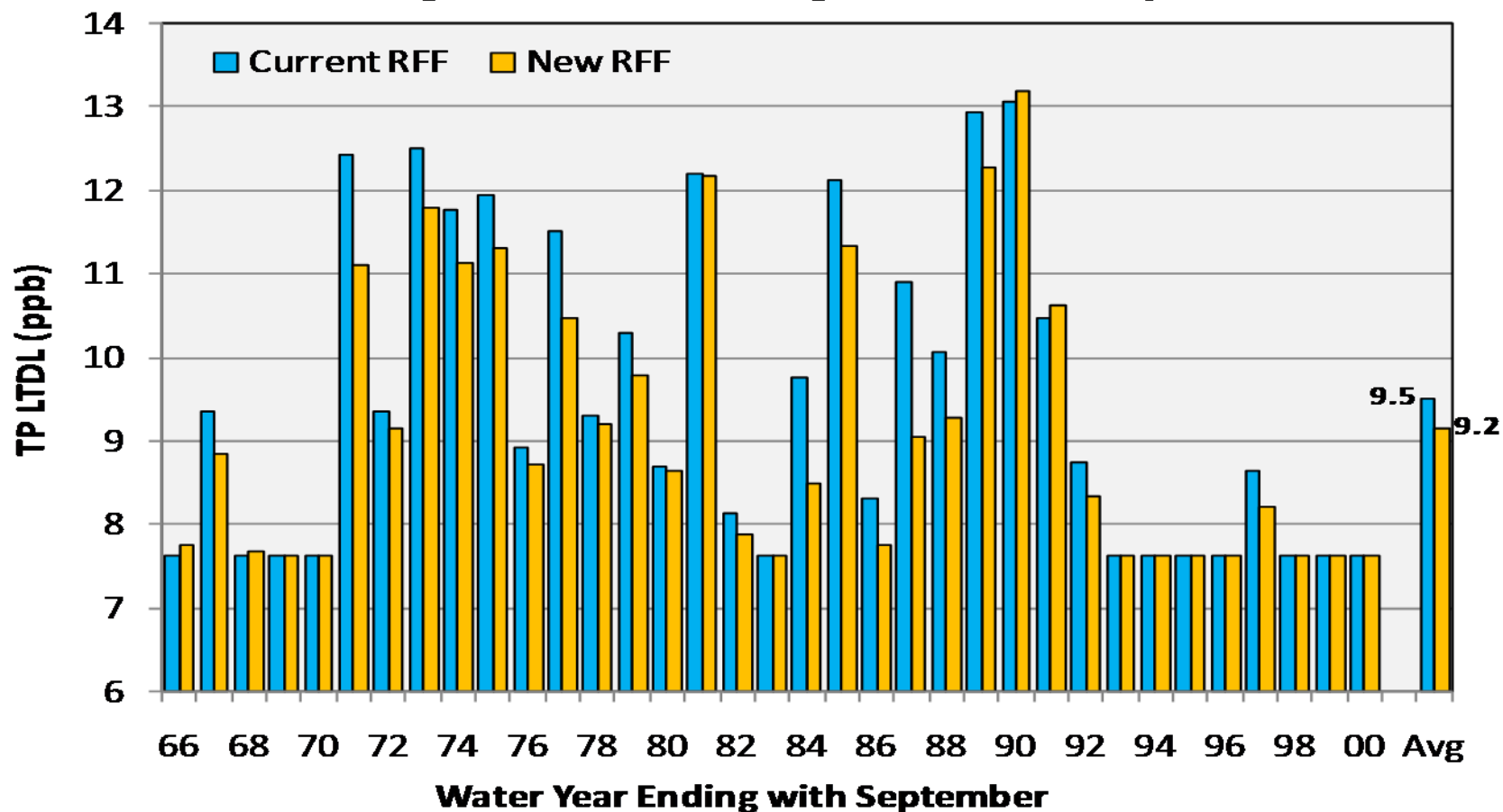
- *TP discharge limit (ppb) decreases with increased flow to ENP*

## Simulated S12+S333 Flow Volume Comparison



- Simulation of NRF shows 17 of 35 water yrs with flow increase of 10% or more

## TP Long-Term Discharge Limit Comparison



- Computation of TP LTDL using simulated flows shows:
  - 13 of 35 water yrs with a reduction in LTDL of 0.5 ppb or more.
  - 4 of 35 water yrs with a reduction in LTDL of 1.0 ppb or more.
- Bottom line: Restoring more-natural flows to ENP may increase the chances of exceeding the limits of the Settlement Agreement.