

**40E-10.021 Definitions**

(1)–(6) No change.

(7) For the Upper Chains of Lakes, Headwaters Revitalization Lakes, and Kissimmee River water reservation, the following definitions apply:

(a) Lakes Hart-Mary Jane Reservation Waterbodies – Lake Hart, Lake Mary Jane, Lake Whippoorwill, Whippoorwill Canal, and the Central and Southern Florida Flood Control Project canals that occur between the S-57 and S-62 structures in Orange and Osceola counties, as depicted in Appendix 4, Figures 4-1 and 4-2A.

(b) Lakes Myrtle-Preston-Joel Reservation Waterbodies – Lake Myrtle, Lake Preston, Lake Joel, Myrtle/Preston Canal, and the Central and Southern Florida Flood Control Project canals that occur between the S-57 and S-58 structures in Osceola County, as depicted in Appendix 4, Figures 4-1 and 4-3A.

(c) East Lake Tohopekaliga Reservation Waterbodies – East Lake Tohopekaliga, Fells Cove, Ajay Lake, Lake Runnymede, Runnymede Canal, and the Central and Southern Florida Flood Control Project canals that occur between the S-59 and S-62 structures in Orange and Osceola counties, as depicted in Appendix 4, Figures 4-1 and 4-4A.

(d) Lake Tohopekaliga Reservation Waterbodies – Lake Tohopekaliga and the Central and Southern Florida Flood Control Project canals that occur between the S-59 and S-61 structures in Osceola County, as depicted in Appendix 4, Figures 4-1 and 4-5A.

(e) Alligator Chain of Lakes Reservation Waterbodies – Alligator Chain of Lakes, including Lake Center, Coon Lake, Trout Lake, Lake Lizzie, Brick Lake, Alligator Lake, Live Oak Lake, and Sardine Lake; Center/Coon, Live Oak, Sardine, and Brick canals; and the Central and Southern Florida Flood Control Project canals that occur between the S-58 and S-60 structures in Osceola County, as depicted in Appendix 4, Figures 4-1 and 4-6A.

(f) Lake Gentry Reservation Waterbodies – Lake Gentry and the Central and Southern Florida Flood Control Project canals that occur between the S-60 and S-63A structures in Osceola County, as depicted in Appendix 4, Figures 4-1 and 4-7A.

(g) Headwaters Revitalization Lakes Reservation Waterbodies – Lake Kissimmee, Lake Hatchineha, Tiger Lake, Tiger Creek, Cypress Lake, Zipprer Canal east of the G-103 structure, Jackson Canal downstream of the G-111 structure, and the Central and Southern Florida Flood Control Project canals that occur between the S-61, S-63A, and S-65 structures in Osceola and Polk counties, as depicted in Appendix 4, Figures 4-1 and 4-8A.

(h) Kissimmee River Reservation Waterbodies – The Kissimmee River and its 100-year floodplain between the S-65 and S-65D structures, Istokpoga Canal and the floodplain located east of the S-67 structure; and the C-38 Canal and remnant river channels between the S-65D and S-65E structures in Polk, Osceola, Okeechobee and Highlands counties, as depicted in Appendix 4, Figures 4-1 and 4-9.

(i) Upper Chain of Lakes Reservation Waterbodies – Refers to the collective waterbodies defined in paragraphs (7)(a)–(7)(f) above, as depicted in Figure 4-1.

(j) Contributing Waterbodies – All wetlands and other surface waters, including canals and ditches, that contribute surface water to a reservation waterbody, as depicted in Figures 4-1, 4-4A, 4-5A, 4-6A, 4-7A, 4-8A, and 4-9.

*Rulemaking Authority: 373.044, 373.113, 373.171, F.S. Laws Implemented 373.016, 373.026, 373.036, 373.1501, 373.1502, 373.219, 373.223, 373.4592, 373.4595, 373.470, F.S. History- New 7-2-2009, amended 3-18-10, 7-21-13, 7-14-14, 7-16-14, \_\_\_\_\_.*

#### **40E-10.031 Water Reservations**

(1)-(5) No change.

(6) Water reserved for the protection of fish and wildlife contained within the Upper Chain of Lakes, Headwaters Revitalization Lakes, Kissimmee River, and Contributing Waterbodies is defined in Subsections 40E-10.071(1)-(3), F.A.C. These water reservation rules do not adjudicate property rights or dictate the operation of the Central & Southern Florida Flood Control Project (C&SF Project).

*Rulemaking Authority: 373.044, 373.113, 373.171, F.S. Laws Implemented 373.016, 373.026, 373.036, 373.1501, 373.1502, 373.219, 373.223, 373.4592, 373.4595, 373.470, F.S. History- New 7-2-2009, amended 3-18-10, 7-21-13, 7-14-14, 7-16-14, \_\_\_\_\_.*

#### **40E-10.071 Water Reservation Areas: Upper and Lower Kissimmee Basin Planning Areas**

##### **(1) Upper Chain of Lakes**

(a) Lakes Hart-Mary Jane Reservation Waterbodies, as defined in paragraph 40E-10.021(7)(a), F.A.C.:

1. Surface Water: All surface water in Lakes Hart-Mary Jane (Figure 4-2A) up to the water reservation stages depicted in Figure 4-2B and listed in Table 4-2 is reserved from allocation.

2. Groundwater: Surficial aquifer system groundwater contributing to Lakes Hart-Mary Jane that is required for the protection of fish and wildlife is reserved from allocation in accordance with Subsection 3.11.5 of the Applicant's Handbook.

(b) Lakes Myrtle-Preston-Joel Reservation Waterbodies, as defined in paragraph 40E-10.021(7)(b), F.A.C.:

1. Surface Water: All surface water in Lakes Myrtle-Preston-Joel (Figure 4-3A) up to the water reservation stages depicted in Figure 4-3B and listed in Table 4-3 is reserved from allocation.

2. Groundwater: Surficial aquifer system groundwater contributing to Lakes Myrtle-Preston-Joel that is required for the protection of fish and wildlife is reserved from allocation in accordance with Subsection 3.11.5 of the Applicant's Handbook.

(c) East Lake Tohopekaliga Reservation Waterbodies, as defined in paragraph 40E-10.021(7)(c), F.A.C., and Contributing Waterbodies, as defined in paragraph 40E-10.021(7)(j), F.A.C.:

1. Surface Water: All surface water in East Lake Tohopekaliga (Figure 4-4A) up to the water reservation stages depicted in Figure 4-4B and listed in Table 4-4 is reserved from allocation.

2. Groundwater: Surficial aquifer system groundwater contributing to East Lake Tohopekaliga or its contributing waterbodies that is required for the protection of fish and wildlife is reserved from allocation in accordance with Subsection 3.11.5 of the Applicant's Handbook.

3. Contributing Waterbodies: Surface water that is required for the protection of fish and wildlife is reserved from allocation in accordance with Subsection 3.11.5 of the Applicant's Handbook.

(d) Lake Tohopekaliga Reservation Waterbodies, as defined in paragraph 40E-10.021(7)(d), F.A.C., and Contributing Waterbodies, as defined in paragraph 40E-10.021(7)(j), F.A.C.:

1. Surface Water: All surface water in Lake Tohopekaliga (Figure 4-5A) up to the water reservation stages depicted in Figure 4-5B and listed in Table 4-5 is reserved from allocation.

2. Groundwater: Surficial aquifer system groundwater contributing to Lake Tohopekaliga or its contributing waterbodies that is required for the protection of fish and wildlife is reserved from allocation in accordance with Subsection 3.11.5 of the Applicant's Handbook.

3. Contributing Waterbodies: Surface water that is required for the protection of fish and wildlife is reserved from allocation in accordance with Subsection 3.11.5 of the Applicant's Handbook.

(e) Alligator Chain of Lakes Reservation Waterbodies, as defined in paragraph 40E-10.021(7)(e), F.A.C., and Contributing Waterbodies, as defined in paragraph 40E-10.021(7)(j), F.A.C.:

1. Surface Water: All surface water in the Alligator Chain of Lakes (Figure 4-6A) up to the water reservation stages depicted in Figure 4-6B and listed in Table 4-6 is reserved from allocation.

2. Groundwater: Surficial aquifer system groundwater contributing to the Alligator Chain of Lakes and their contributing waterbodies that is required for the protection of fish and wildlife is reserved from allocation in accordance with Subsection 3.11.5 of the Applicant's Handbook.

3. Contributing Waterbodies: Surface water that is required for the protection of fish and wildlife is reserved from allocation in accordance with Subsection 3.11.5 of the Applicant's Handbook.

(f) Lake Gentry Reservation Waterbodies, as defined in paragraph 40E-10.021(7)(f), F.A.C., and Contributing Waterbodies, as defined in paragraph 40E-10.021(7)(j), F.A.C.:

1. Surface Water: All surface water in Lake Gentry (Figure 4-7A) up to the water reservation stages depicted in Figure 4-7B and listed in Table 4-7 is reserved from allocation.

2. Groundwater: Surficial aquifer system groundwater contributing to Lake Gentry or its contributing waterbodies that is required for the protection of fish and wildlife is reserved from allocation in accordance with Subsection 3.11.5 of the Applicant's Handbook.

3. Contributing Waterbodies: Surface water that is required for the protection of fish and wildlife is reserved from allocation in accordance with Subsection 3.11.5 of the Applicant's Handbook.

(2) Headwaters Revitalization Lakes Reservation Waterbodies, as defined in paragraph 40E-10.021(7)(g), F.A.C., and Contributing Waterbodies, as defined in paragraph 40E-10.021(7)(j), F.A.C.:

(a) Surface Water: All surface water in the Headwaters Revitalization Lakes (Figure 4-8A) ~~up to the water reservation stages depicted in~~; Figure 4-8B ~~and listed in~~; Table 4-8) is reserved from allocation.

(b) Groundwater: Surficial aquifer system groundwater contributing to the Headwaters Revitalization Lakes or their contributing waterbodies that is required for the protection of fish and wildlife is reserved from allocation in accordance with Subsection 3.11.5 of the Applicant's Handbook.

(c) Contributing Waterbodies: Surface water that is required for the protection of fish and wildlife is reserved from allocation in accordance with Subsection 3.11.5 of the Applicant's Handbook.

(3) Kissimmee River Reservation Waterbodies, as defined in paragraph 40E-10.021(7)(h), F.A.C., and Contributing Waterbodies, as defined in paragraph 40E-10.021(7)(j), F.A.C.:

(a) Surface Water: All surface water in the Kissimmee River (Figure 4-9) is reserved from allocation in accordance with Subsection 3.11.5 of the Applicant's Handbook.

(b) Groundwater: Surficial aquifer system groundwater contributing to the Kissimmee River or its contributing waterbodies that is required for the protection of fish and wildlife is reserved from allocation in accordance with Subsection 3.11.5 of the Applicant's Handbook.

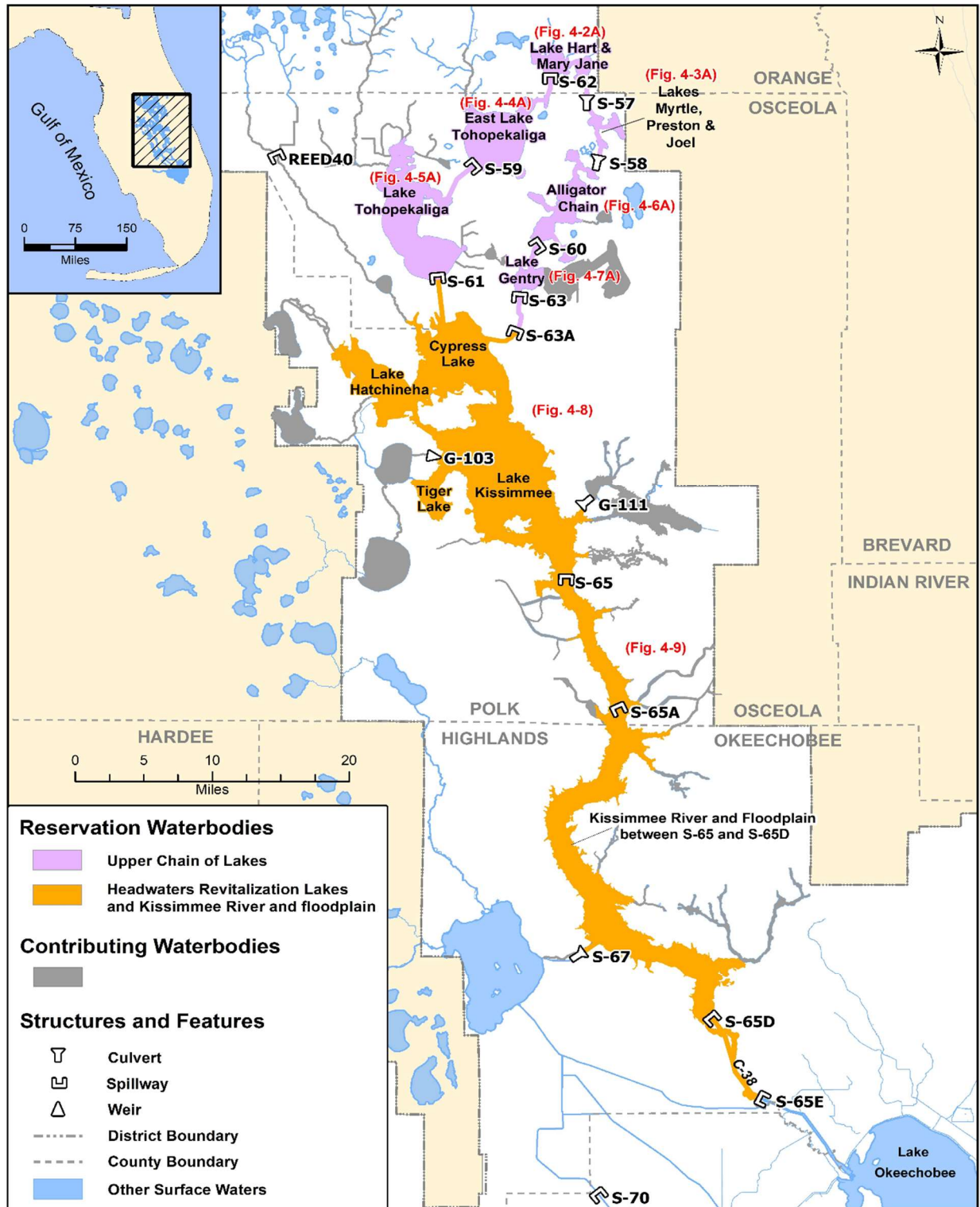
(c) Contributing Waterbodies: Surface water that is required for the protection of fish and wildlife is reserved from allocation in accordance with Subsection 3.11.5 of the Applicant's Handbook.

(4) The reservation contained in this rule and the criteria contained in Section 3.11.5 of the "Applicant's Handbook for Water Use Permit Applications within the South Florida Water Management District," incorporated by reference in Rule 40E-2.091, F.A.C., shall be revised pursuant to Section 373.223(4), F.S., in light of changed conditions or new information.

158 *Rulemaking Authority: 373.044, 373.113, 373.171, F.S. Laws Implemented 373.016, 373.026,*  
159 *373.036, 373.1501, 373.1502, 373.219, 373.223, 373.4592, 373.4595, 373.470, F.S. History-*  
160 *New \_\_\_\_\_.*

DRAFT

## Appendix 4: Upper and Lower Kissimmee Basin Planning Areas





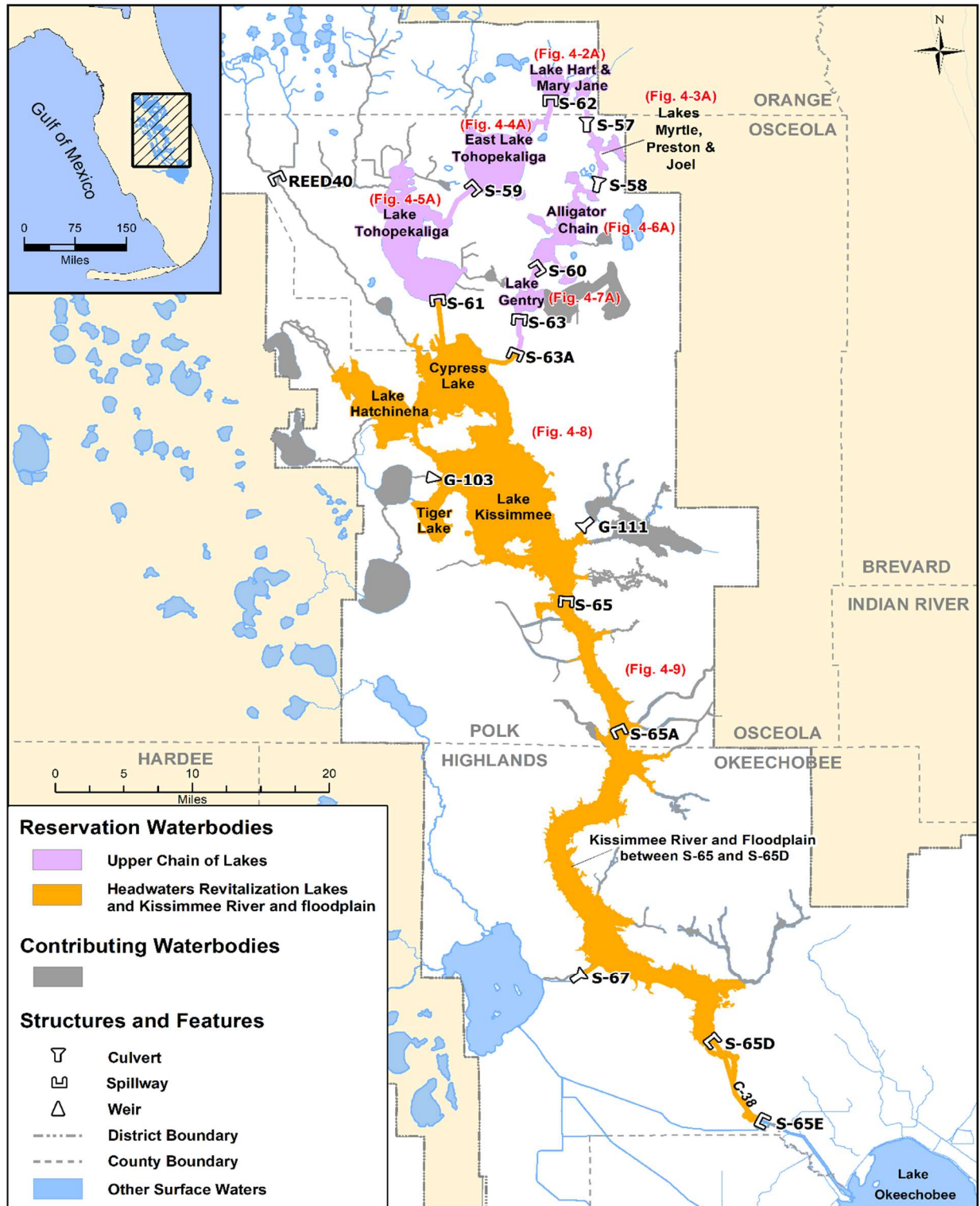


Figure 4-1. Kissimmee River and Chain of Lakes reservation and contributing waterbodies.

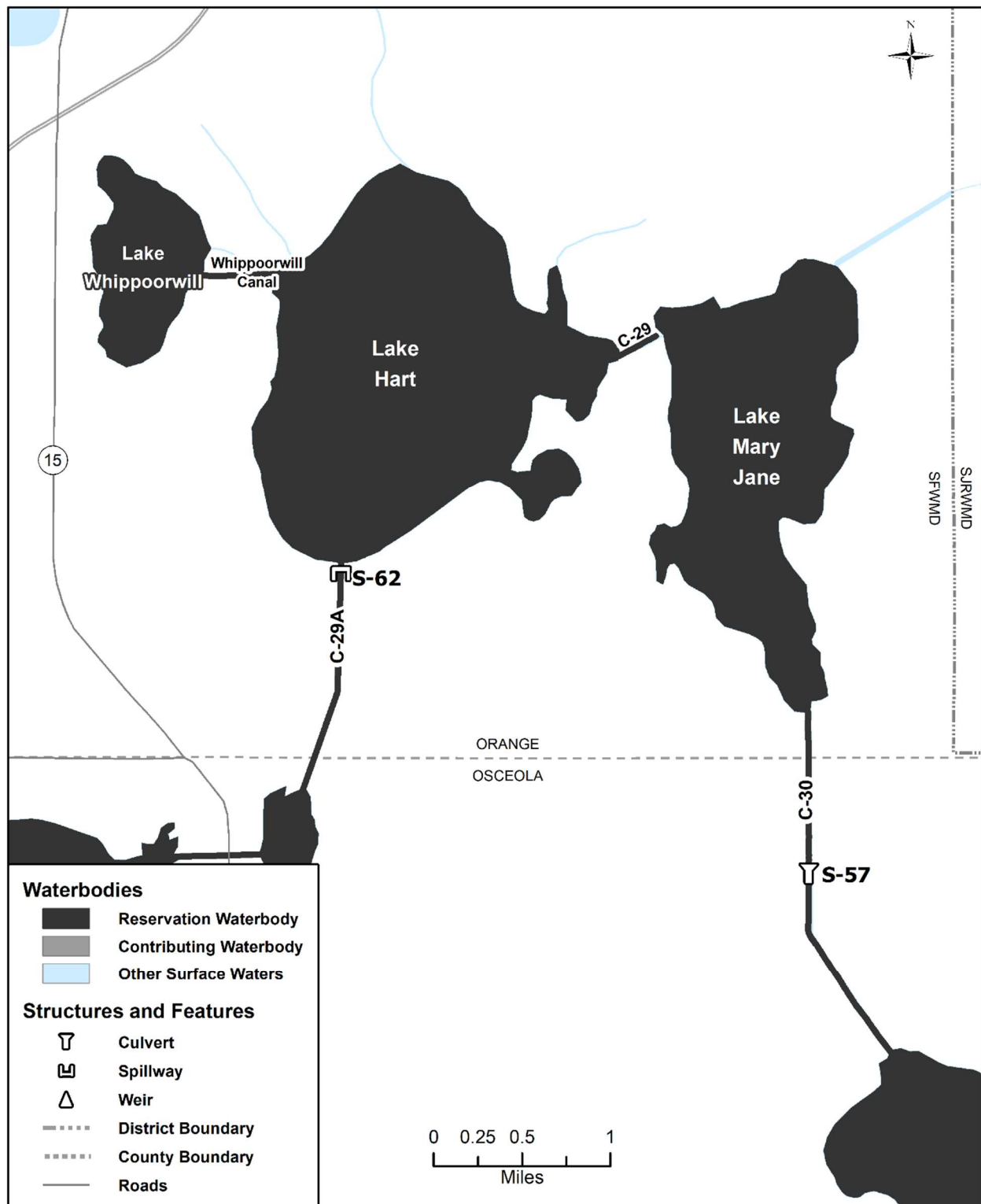


Figure 4-2A. Lakes Hart-Mary Jane reservation waterbodies (no contributing waterbodies present).  
Unlabeled waterbodies in this figure are not included in this reservation waterbody group.



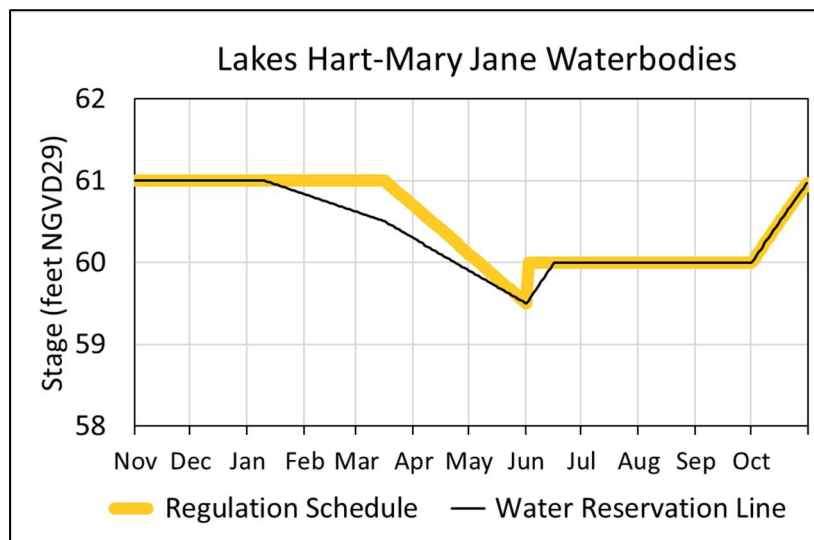


Figure 4-2B. Hydrograph of the current regulation schedule and the water reservation stage at S-62 (water reservation line) for Lakes Hart-Mary Jane reservation waterbodies. All water up to the water reservation line is reserved from allocation for protection of fish and wildlife (derived from data in Table 4-2).

Table 4-2. Maximum daily water reservation stages at S-62 for Lakes Hart-Mary Jane reservation waterbodies (black line in Figure 4-2B).

Day	January	February	March	April	May	June	July	August	September	October	November	December
1	61.00	60.83	60.62	60.29	59.90	59.50	60.00	60.00	60.00	60.00	61.00	61.00
2	61.00	60.82	60.61	60.28	59.89	59.53	60.00	60.00	60.00	60.03	61.00	61.00
3	61.00	60.82	60.60	60.27	59.88	59.57	60.00	60.00	60.00	60.06	61.00	61.00
4	61.00	60.81	60.59	60.25	59.86	59.60	60.00	60.00	60.00	60.10	61.00	61.00
5	61.00	60.80	60.58	60.24	59.85	59.63	60.00	60.00	60.00	60.13	61.00	61.00
6	61.00	60.79	60.58	60.23	59.84	59.67	60.00	60.00	60.00	60.16	61.00	61.00
7	61.00	60.78	60.57	60.21	59.82	59.70	60.00	60.00	60.00	60.19	61.00	61.00
8	61.00	60.78	60.56	60.20	59.81	59.73	60.00	60.00	60.00	60.23	61.00	61.00
9	61.00	60.77	60.55	60.19	59.80	59.77	60.00	60.00	60.00	60.26	61.00	61.00
10	61.00	60.76	60.55	60.18	59.79	59.80	60.00	60.00	60.00	60.29	61.00	61.00
11	60.99	60.75	60.54	60.16	59.77	59.83	60.00	60.00	60.00	60.32	61.00	61.00
12	60.98	60.75	60.53	60.15	59.76	59.87	60.00	60.00	60.00	60.35	61.00	61.00
13	60.98	60.74	60.52	60.14	59.75	59.90	60.00	60.00	60.00	60.39	61.00	61.00
14	60.97	60.73	60.52	60.12	59.73	59.93	60.00	60.00	60.00	60.42	61.00	61.00
15	60.96	60.72	60.51	60.11	59.72	59.97	60.00	60.00	60.00	60.45	61.00	61.00
16	60.95	60.72	60.50	60.10	59.71	60.00	60.00	60.00	60.00	60.48	61.00	61.00
17	60.95	60.71	60.49	60.08	59.69	60.00	60.00	60.00	60.00	60.52	61.00	61.00
18	60.94	60.70	60.47	60.07	59.68	60.00	60.00	60.00	60.00	60.55	61.00	61.00
19	60.93	60.69	60.46	60.06	59.67	60.00	60.00	60.00	60.00	60.58	61.00	61.00
20	60.92	60.68	60.45	60.05	59.66	60.00	60.00	60.00	60.00	60.61	61.00	61.00
21	60.92	60.68	60.44	60.03	59.64	60.00	60.00	60.00	60.00	60.65	61.00	61.00
22	60.91	60.67	60.42	60.02	59.63	60.00	60.00	60.00	60.00	60.68	61.00	61.00
23	60.90	60.66	60.41	60.01	59.62	60.00	60.00	60.00	60.00	60.71	61.00	61.00
24	60.89	60.65	60.40	59.99	59.60	60.00	60.00	60.00	60.00	60.74	61.00	61.00
25	60.88	60.65	60.38	59.98	59.59	60.00	60.00	60.00	60.00	60.77	61.00	61.00
26	60.88	60.64	60.37	59.97	59.58	60.00	60.00	60.00	60.00	60.81	61.00	61.00
27	60.87	60.63	60.36	59.95	59.56	60.00	60.00	60.00	60.00	60.84	61.00	61.00
28	60.86	60.62	60.34	59.94	59.55	60.00	60.00	60.00	60.00	60.87	61.00	61.00
29	60.85		60.33	59.93	59.54	60.00	60.00	60.00	60.00	60.90	61.00	61.00
30	60.85		60.32	59.92	59.53	60.00	60.00	60.00	60.00	60.94	61.00	61.00
31	60.84		60.31		59.51		60.00	60.00		60.97		61.00

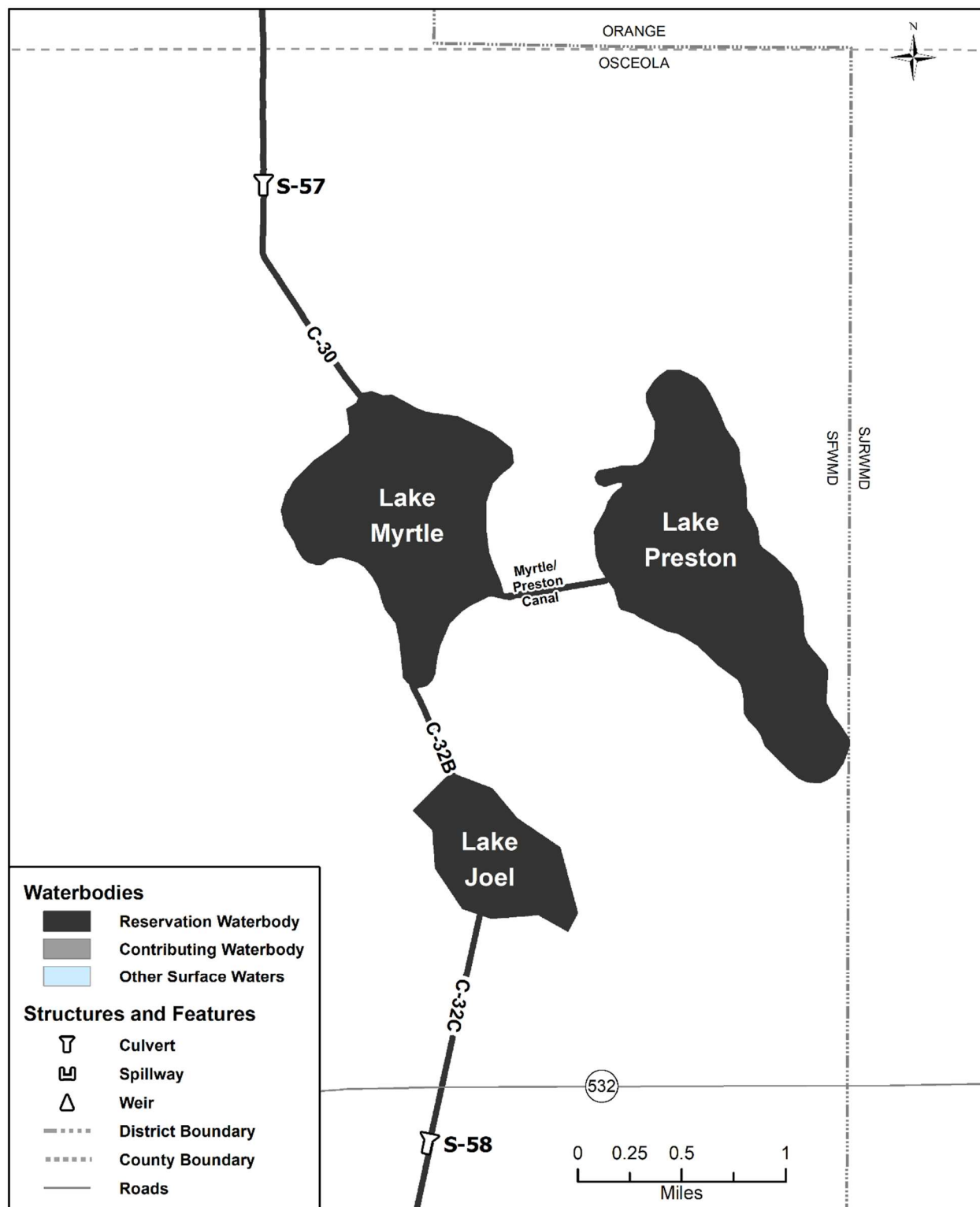


Figure 4-3A. Lakes Myrtle-Preston-Joel reservation waterbodies (no contributing waterbodies present).  
Unlabeled waterbodies in this figure are not included in this reservation waterbody group.

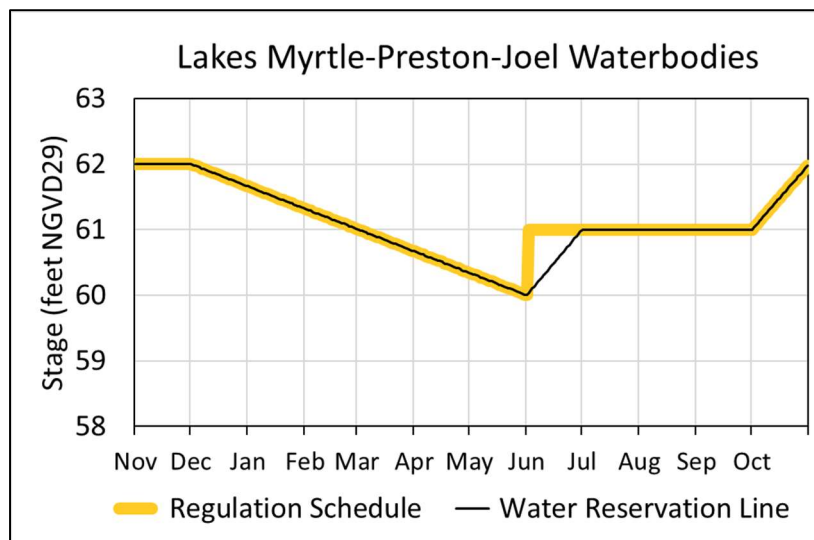


Figure 4-3B. Hydrograph of the current regulation schedule and the water reservation stage [at S-57](#) (water reservation line) for Lakes Myrtle-Preston-Joel reservation waterbodies. All water up to the water reservation line is reserved from allocation for protection of fish and wildlife (derived from data in Table 4-3).

Table 4-3. Maximum daily water reservation stages [at S-57](#) for Lakes Myrtle-Preston-Joel reservation waterbodies (black line in Figure 4-3B).

Day	January	February	March	April	May	June	July	August	September	October	November	December
1	61.66	61.32	61.01	60.67	60.34	60.00	61.00	61.00	61.00	61.00	62.00	62.00
2	61.65	61.31	61.00	60.66	60.33	60.03	61.00	61.00	61.00	61.03	62.00	61.99
3	61.64	61.30	60.99	60.65	60.32	60.07	61.00	61.00	61.00	61.06	62.00	61.98
4	61.63	61.29	60.98	60.64	60.31	60.10	61.00	61.00	61.00	61.10	62.00	61.97
5	61.62	61.27	60.97	60.63	60.30	60.13	61.00	61.00	61.00	61.13	62.00	61.96
6	61.60	61.26	60.96	60.62	60.29	60.17	61.00	61.00	61.00	61.16	62.00	61.95
7	61.59	61.25	60.94	60.60	60.27	60.20	61.00	61.00	61.00	61.19	62.00	61.93
8	61.58	61.24	60.93	60.59	60.26	60.23	61.00	61.00	61.00	61.23	62.00	61.92
9	61.57	61.23	60.92	60.58	60.25	60.27	61.00	61.00	61.00	61.26	62.00	61.91
10	61.56	61.22	60.91	60.57	60.24	60.30	61.00	61.00	61.00	61.29	62.00	61.90
11	61.55	61.21	60.90	60.56	60.23	60.33	61.00	61.00	61.00	61.32	62.00	61.89
12	61.54	61.20	60.89	60.55	60.22	60.37	61.00	61.00	61.00	61.35	62.00	61.88
13	61.53	61.19	60.88	60.54	60.21	60.40	61.00	61.00	61.00	61.39	62.00	61.87
14	61.52	61.18	60.87	60.53	60.20	60.43	61.00	61.00	61.00	61.42	62.00	61.86
15	61.51	61.16	60.86	60.52	60.19	60.47	61.00	61.00	61.00	61.45	62.00	61.85
16	61.49	61.15	60.85	60.51	60.18	60.50	61.00	61.00	61.00	61.48	62.00	61.84
17	61.48	61.14	60.84	60.49	60.16	60.53	61.00	61.00	61.00	61.52	62.00	61.83
18	61.47	61.13	60.82	60.48	60.15	60.57	61.00	61.00	61.00	61.55	62.00	61.81
19	61.46	61.12	60.81	60.47	60.14	60.60	61.00	61.00	61.00	61.58	62.00	61.80
20	61.45	61.11	60.80	60.46	60.13	60.63	61.00	61.00	61.00	61.61	62.00	61.79
21	61.44	61.10	60.79	60.45	60.12	60.67	61.00	61.00	61.00	61.65	62.00	61.78
22	61.43	61.09	60.78	60.44	60.11	60.70	61.00	61.00	61.00	61.68	62.00	61.77
23	61.42	61.08	60.77	60.43	60.10	60.73	61.00	61.00	61.00	61.71	62.00	61.76
24	61.41	61.07	60.76	60.42	60.09	60.77	61.00	61.00	61.00	61.74	62.00	61.75
25	61.40	61.05	60.75	60.41	60.08	60.80	61.00	61.00	61.00	61.77	62.00	61.74
26	61.38	61.04	60.74	60.40	60.07	60.83	61.00	61.00	61.00	61.81	62.00	61.73
27	61.37	61.03	60.73	60.38	60.05	60.87	61.00	61.00	61.00	61.84	62.00	61.72
28	61.36	61.02	60.71	60.37	60.04	60.90	61.00	61.00	61.00	61.87	62.00	61.70
29	61.35		60.70	60.36	60.03	60.93	61.00	61.00	61.00	61.90	62.00	61.69
30	61.34		60.69	60.35	60.02	60.97	61.00	61.00	61.00	61.94	62.00	61.68
31	61.33		60.68		60.01		61.00	61.00		61.97		61.67

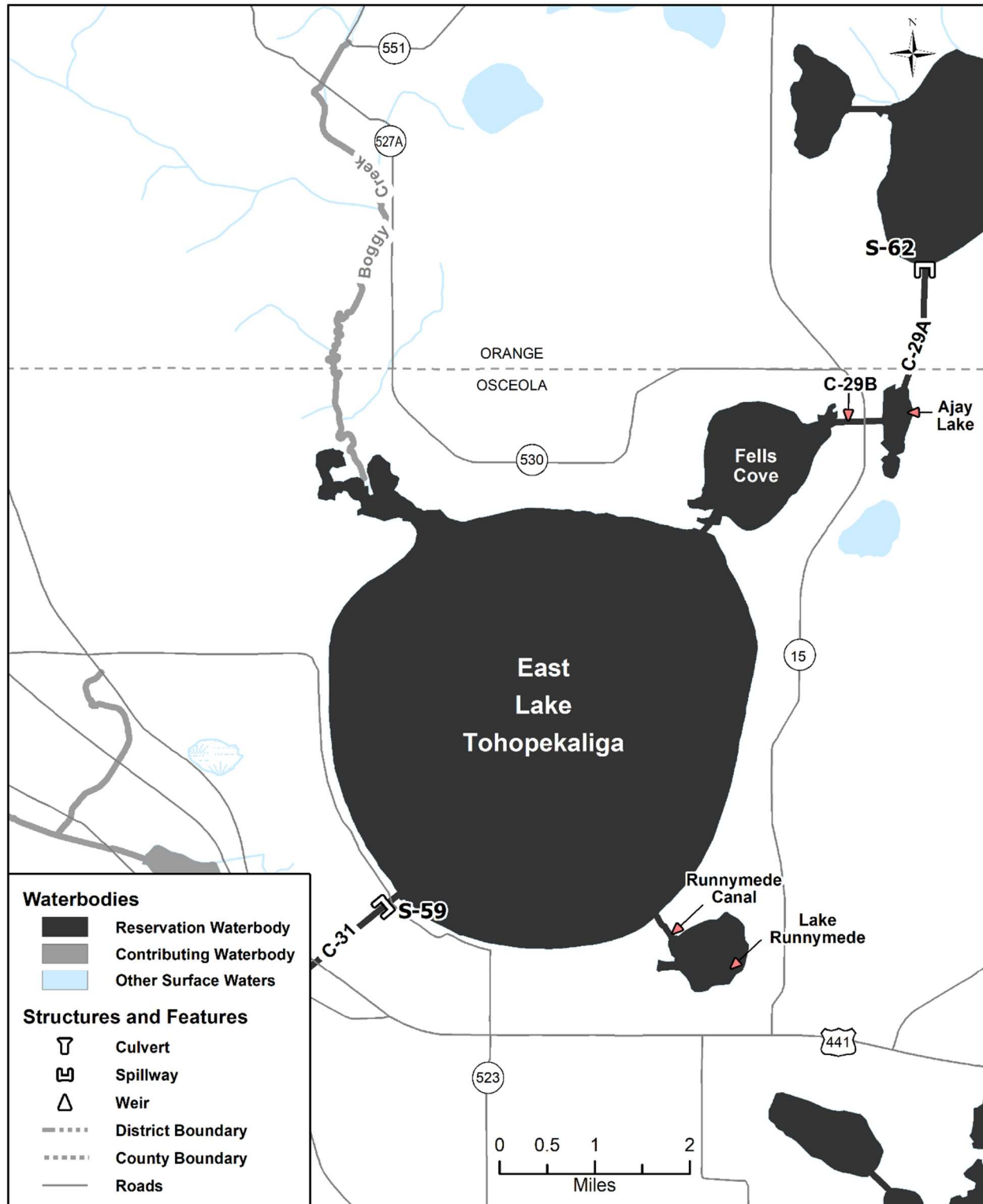


Figure 4-4A. East Lake Tohopekaliga reservation and contributing waterbodies.

DRAFT: ~~May 20~~August 24, 2020

Unlabeled waterbodies in this figure are not included in this reservation/contributing waterbody group.

DRAFT



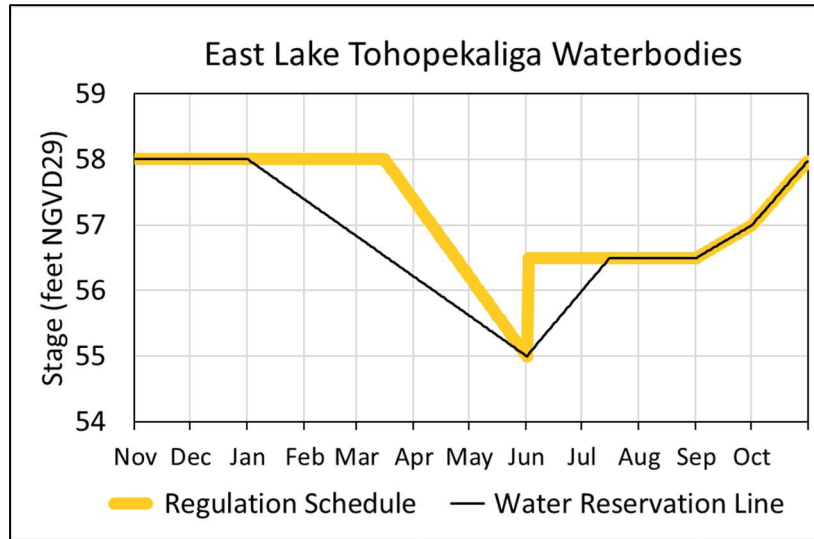
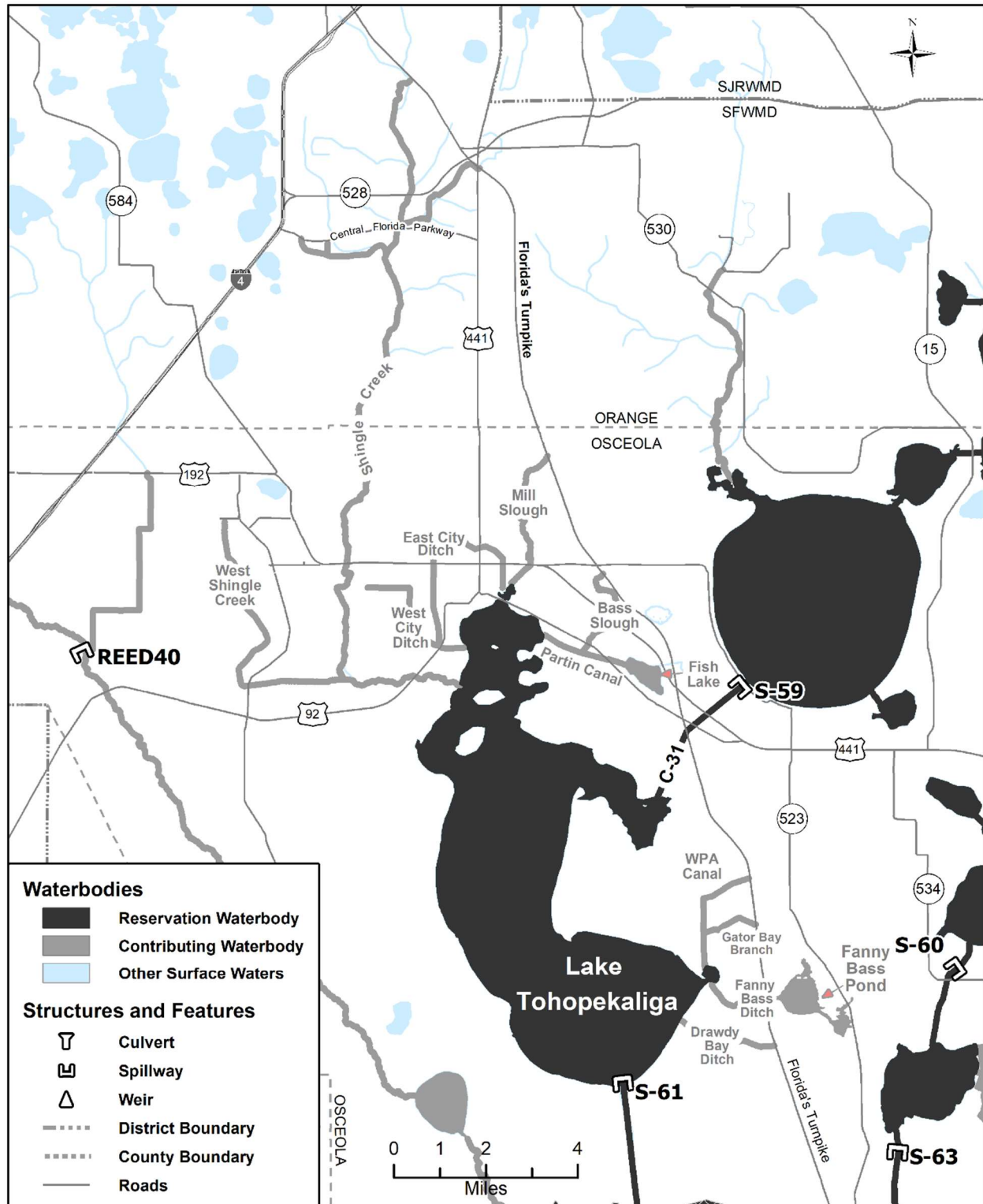


Figure 4-4B. Hydrograph of the current regulation schedule and the water reservation stage at S-59 (water reservation line) for East Lake Tohopekalgia reservation waterbodies. All water up to the water reservation line is reserved from allocation for protection of fish and wildlife (derived from data in Table 4-4).

Table 4-4. Maximum daily water reservation stages at S-59 for East Lake Tohopekalgia reservation waterbodies (black line in Figure 4-4B).

Day	January	February	March	April	May	June	July	August	September	October	November	December
1	58.00	57.38	56.83	56.21	55.62	55.00	56.00	56.50	56.50	57.00	58.00	58.00
2	57.98	57.36	56.81	56.19	55.60	55.03	56.03	56.50	56.52	57.03	58.00	58.00
3	57.96	57.34	56.79	56.17	55.58	55.07	56.07	56.50	56.53	57.06	58.00	58.00
4	57.94	57.32	56.77	56.15	55.56	55.10	56.10	56.50	56.55	57.10	58.00	58.00
5	57.92	57.30	56.75	56.13	55.54	55.13	56.13	56.50	56.57	57.13	58.00	58.00
6	57.90	57.28	56.73	56.11	55.52	55.17	56.17	56.50	56.58	57.16	58.00	58.00
7	57.88	57.26	56.71	56.09	55.50	55.20	56.20	56.50	56.60	57.19	58.00	58.00
8	57.86	57.25	56.69	56.07	55.48	55.23	56.23	56.50	56.62	57.23	58.00	58.00
9	57.84	57.23	56.67	56.05	55.46	55.27	56.27	56.50	56.63	57.26	58.00	58.00
10	57.82	57.21	56.65	56.03	55.44	55.30	56.30	56.50	56.65	57.29	58.00	58.00
11	57.80	57.19	56.63	56.01	55.42	55.33	56.33	56.50	56.67	57.32	58.00	58.00
12	57.78	57.17	56.61	55.99	55.40	55.37	56.37	56.50	56.68	57.35	58.00	58.00
13	57.76	57.15	56.59	55.97	55.38	55.40	56.40	56.50	56.70	57.39	58.00	58.00
14	57.74	57.13	56.57	55.95	55.36	55.43	56.43	56.50	56.72	57.42	58.00	58.00
15	57.72	57.11	56.55	55.93	55.34	55.47	56.47	56.50	56.73	57.45	58.00	58.00
16	57.70	57.09	56.53	55.91	55.32	55.50	56.50	56.50	56.75	57.48	58.00	58.00
17	57.68	57.07	56.51	55.89	55.30	55.53	56.50	56.50	56.77	57.52	58.00	58.00
18	57.66	57.05	56.49	55.87	55.28	55.57	56.50	56.50	56.78	57.55	58.00	58.00
19	57.64	57.03	56.47	55.85	55.26	55.60	56.50	56.50	56.80	57.58	58.00	58.00
20	57.62	57.01	56.45	55.83	55.24	55.63	56.50	56.50	56.82	57.61	58.00	58.00
21	57.60	56.99	56.43	55.81	55.22	55.67	56.50	56.50	56.83	57.65	58.00	58.00
22	57.58	56.97	56.41	55.79	55.20	55.70	56.50	56.50	56.85	57.68	58.00	58.00
23	57.56	56.95	56.39	55.77	55.18	55.73	56.50	56.50	56.87	57.71	58.00	58.00
24	57.54	56.93	56.37	55.75	55.16	55.77	56.50	56.50	56.88	57.74	58.00	58.00
25	57.52	56.91	56.35	55.74	55.14	55.80	56.50	56.50	56.90	57.77	58.00	58.00
26	57.50	56.89	56.33	55.72	55.12	55.83	56.50	56.50	56.92	57.81	58.00	58.00
27	57.48	56.87	56.31	55.70	55.10	55.87	56.50	56.50	56.93	57.84	58.00	58.00
28	57.46	56.85	56.29	55.68	55.08	55.90	56.50	56.50	56.95	57.87	58.00	58.00
29	57.44		56.27	55.66	55.06	55.93	56.50	56.50	56.97	57.90	58.00	58.00
30	57.42		56.25	55.64	55.04	55.97	56.50	56.50	56.98	57.94	58.00	58.00
31	57.40		56.23		55.02		56.50	56.50		57.97		58.00



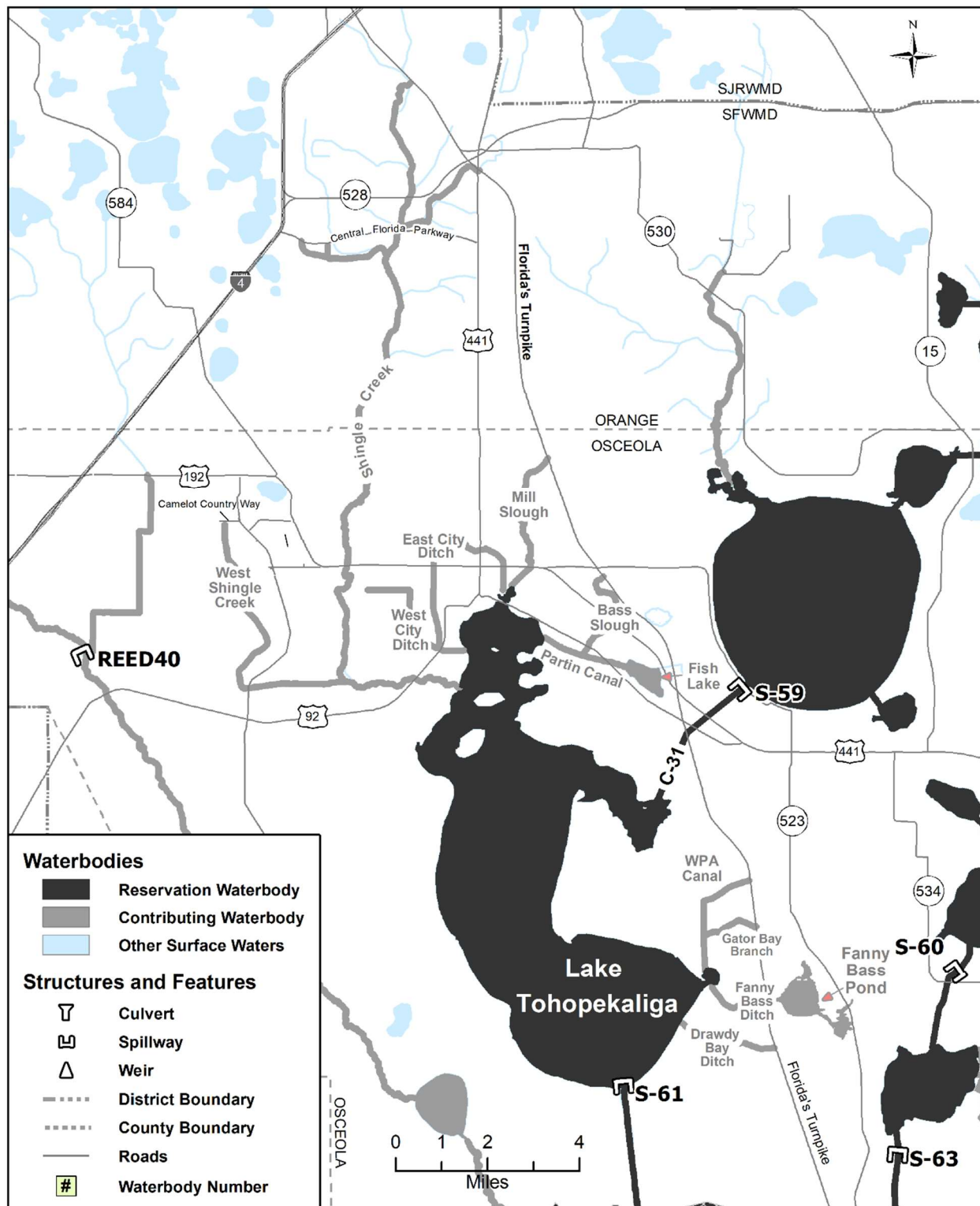


Figure 4-5A. Lake Tohopekaliga reservation and contributing waterbodies. Unlabeled waterbodies in this figure are not included in this reservation/contributing waterbody group.

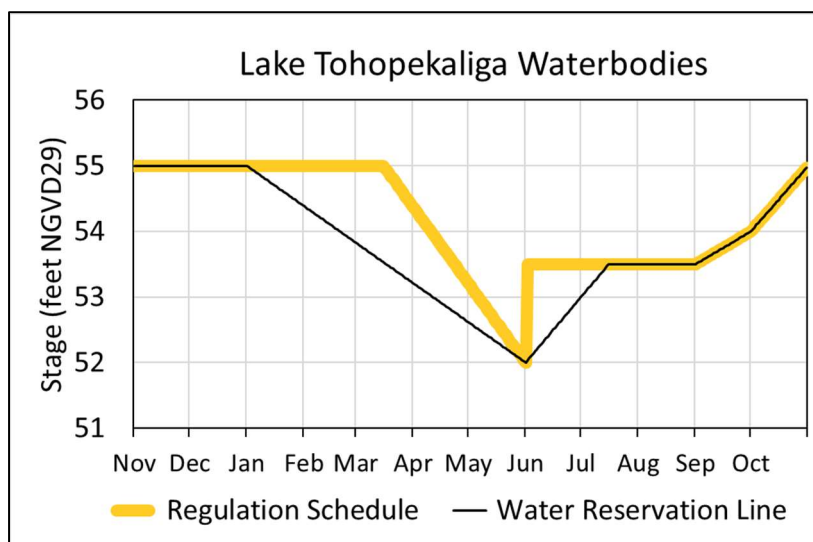


Figure 4-5B. Hydrograph of the current regulation schedule and the water reservation stage [at S-61](#) (water reservation line) for Lake Tohopekaliga reservation waterbodies. All water up to the water reservation line is reserved from allocation for protection of fish and wildlife (derived from data in Table 4-5).

Table 4-5. Maximum daily water reservation stages [at S-61](#) for Lake Tohopekaliga reservation waterbodies (black line in Figure 4-5B).

Day	January	February	March	April	May	June	July	August	September	October	November	December
1	55.00	54.38	53.83	53.21	52.62	52.00	53.00	53.50	53.50	54.00	55.00	55.00
2	54.98	54.36	53.81	53.19	52.60	52.03	53.03	53.50	53.52	54.03	55.00	55.00
3	54.96	54.34	53.79	53.17	52.58	52.07	53.07	53.50	53.53	54.06	55.00	55.00
4	54.94	54.32	53.77	53.15	52.56	52.10	53.10	53.50	53.55	54.10	55.00	55.00
5	54.92	54.30	53.75	53.13	52.54	52.13	53.13	53.50	53.57	54.13	55.00	55.00
6	54.90	54.28	53.73	53.11	52.52	52.17	53.17	53.50	53.58	54.16	55.00	55.00
7	54.88	54.26	53.71	53.09	52.50	52.20	53.20	53.50	53.60	54.19	55.00	55.00
8	54.86	54.25	53.69	53.07	52.48	52.23	53.23	53.50	53.62	54.23	55.00	55.00
9	54.84	54.23	53.67	53.05	52.46	52.27	53.27	53.50	53.63	54.26	55.00	55.00
10	54.82	54.21	53.65	53.03	52.44	52.30	53.30	53.50	53.65	54.29	55.00	55.00
11	54.80	54.19	53.63	53.01	52.42	52.33	53.33	53.50	53.67	54.32	55.00	55.00
12	54.78	54.17	53.61	52.99	52.40	52.37	53.37	53.50	53.68	54.35	55.00	55.00
13	54.76	54.15	53.59	52.97	52.38	52.40	53.40	53.50	53.70	54.39	55.00	55.00
14	54.74	54.13	53.57	52.95	52.36	52.43	53.43	53.50	53.72	54.42	55.00	55.00
15	54.72	54.11	53.55	52.93	52.34	52.47	53.47	53.50	53.73	54.45	55.00	55.00
16	54.70	54.09	53.53	52.91	52.32	52.50	53.50	53.50	53.75	54.48	55.00	55.00
17	54.68	54.07	53.51	52.89	52.30	52.53	53.50	53.50	53.77	54.52	55.00	55.00
18	54.66	54.05	53.49	52.87	52.28	52.57	53.50	53.50	53.78	54.55	55.00	55.00
19	54.64	54.03	53.47	52.85	52.26	52.60	53.50	53.50	53.80	54.58	55.00	55.00
20	54.62	54.01	53.45	52.83	52.24	52.63	53.50	53.50	53.82	54.61	55.00	55.00
21	54.60	53.99	53.43	52.81	52.22	52.67	53.50	53.50	53.83	54.65	55.00	55.00
22	54.58	53.97	53.41	52.79	52.20	52.70	53.50	53.50	53.85	54.68	55.00	55.00
23	54.56	53.95	53.39	52.77	52.18	52.73	53.50	53.50	53.87	54.71	55.00	55.00
24	54.54	53.93	53.37	52.75	52.16	52.77	53.50	53.50	53.88	54.74	55.00	55.00
25	54.52	53.91	53.35	52.74	52.14	52.80	53.50	53.50	53.90	54.77	55.00	55.00
26	54.50	53.89	53.33	52.72	52.12	52.83	53.50	53.50	53.92	54.81	55.00	55.00
27	54.48	53.87	53.31	52.70	52.10	52.87	53.50	53.50	53.93	54.84	55.00	55.00
28	54.46	53.85	53.29	52.68	52.08	52.90	53.50	53.50	53.95	54.87	55.00	55.00
29	54.44		53.27	52.66	52.06	52.93	53.50	53.50	53.97	54.90	55.00	55.00
30	54.42		53.25	52.64	52.04	52.97	53.50	53.50	53.98	54.94	55.00	55.00

DRAFT: ~~May 20~~August 24, 2020

Day	January	February	March	April	May	June	July	August	September	October	November	December
31	54.40		53.23		52.02		53.50	53.50		54.97		55.00

DRAFT



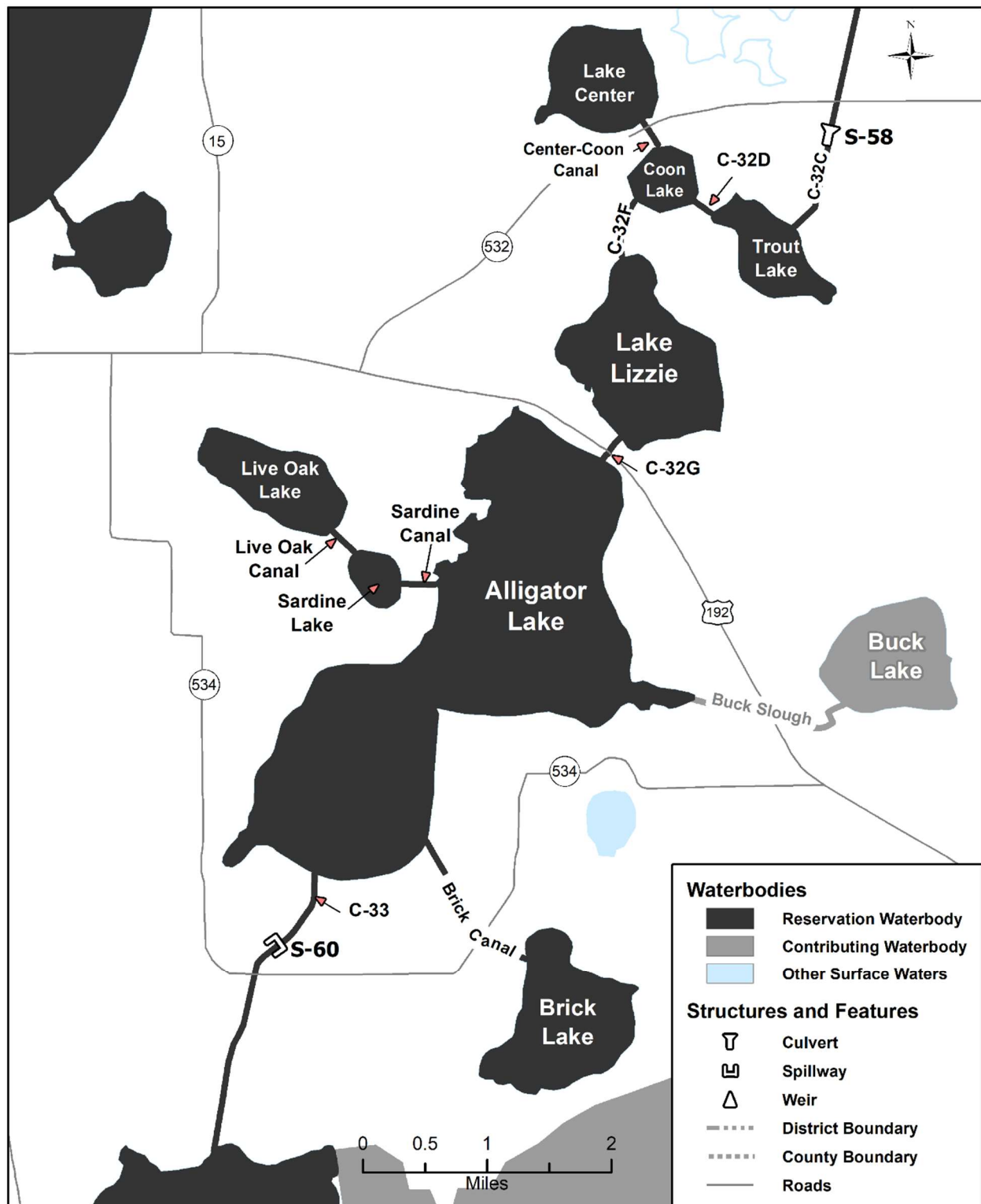


Figure 4-6A. Alligator Chain of Lakes reservation and contributing waterbodies.

DRAFT: ~~May 20~~August 24, 2020

Unlabeled waterbodies in this figure are not included in this reservation/contributing waterbody group.

DRAFT

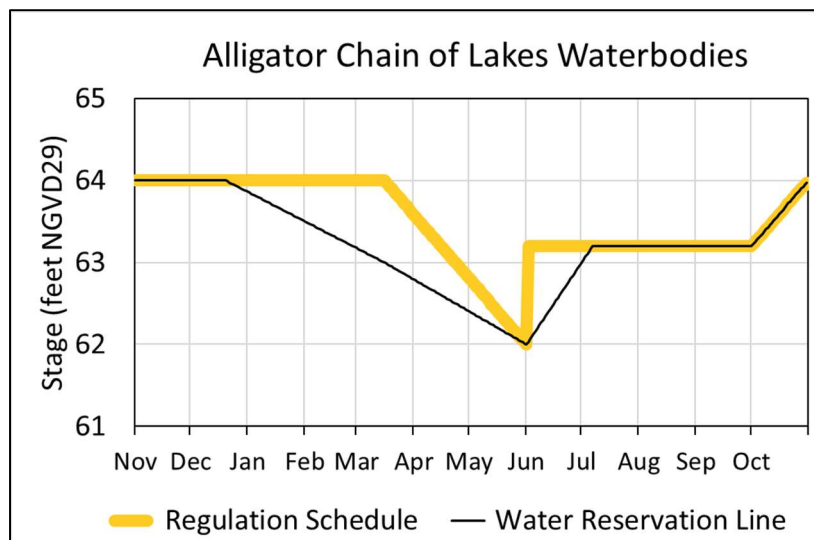
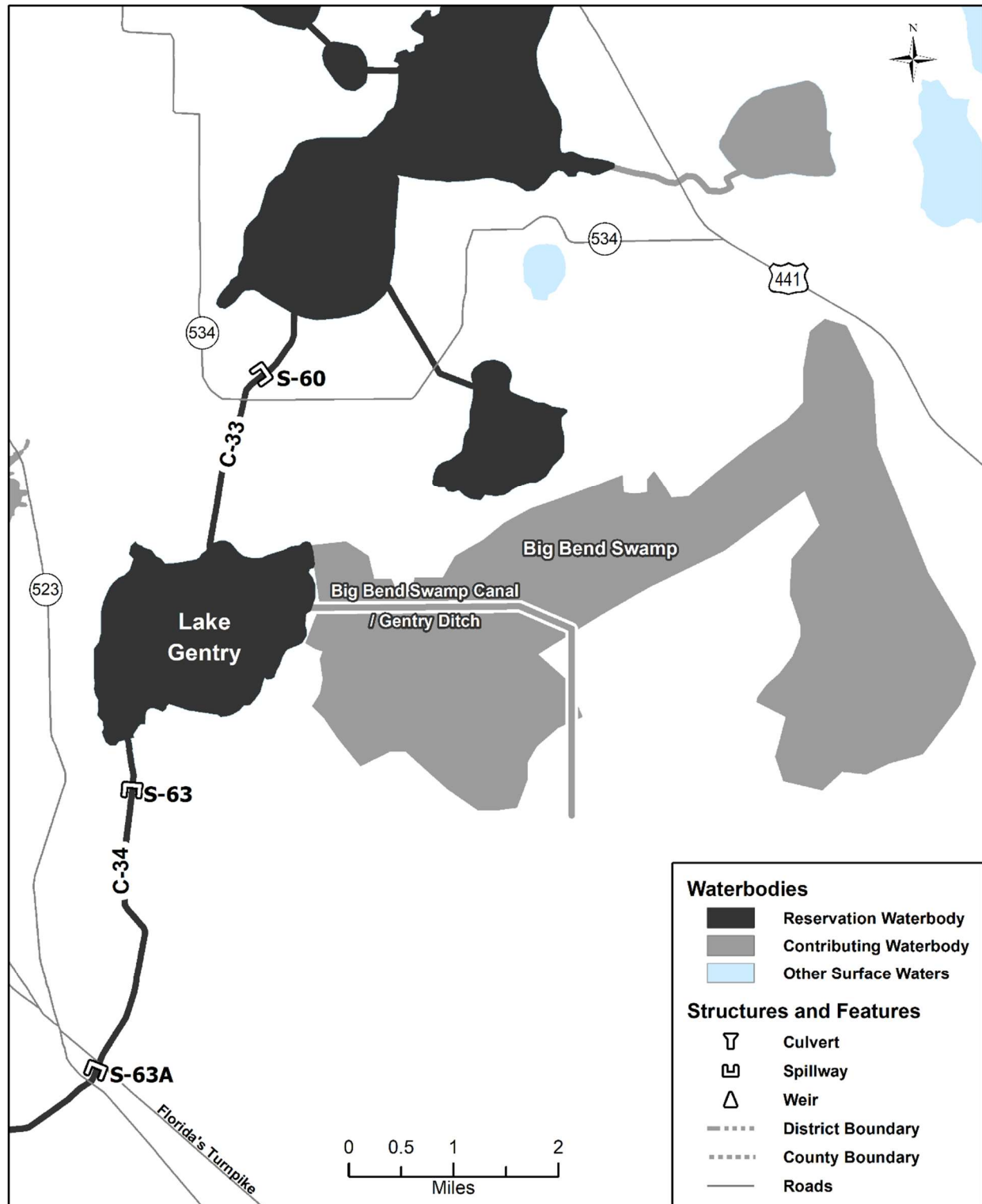


Figure 4-6B. Hydrograph of the current regulation schedule and the water reservation stage at S-60 (water reservation line) for Alligator Chain of Lakes reservation waterbodies. All water up to the water reservation line is reserved from allocation for protection of fish and wildlife (derived from data in Table 4-6).

Table 4-6. Maximum daily water reservation stages at S-60 for Alligator Chain of Lakes reservation waterbodies (black line in Figure 4-6B).

Day	January	February	March	April	May	June	July	August	September	October	November	December
1	63.86	63.50	63.17	62.79	62.40	62.00	63.00	63.20	63.20	63.20	64.00	64.00
2	63.85	63.49	63.16	62.78	62.39	62.03	63.03	63.20	63.20	63.23	64.00	64.00
3	63.84	63.48	63.15	62.77	62.38	62.07	63.07	63.20	63.20	63.25	64.00	64.00
4	63.83	63.47	63.14	62.75	62.36	62.10	63.10	63.20	63.20	63.28	64.00	64.00
5	63.81	63.45	63.13	62.74	62.35	62.13	63.13	63.20	63.20	63.30	64.00	64.00
6	63.80	63.44	63.12	62.73	62.34	62.17	63.17	63.20	63.20	63.33	64.00	64.00
7	63.79	63.43	63.10	62.71	62.32	62.20	63.20	63.20	63.20	63.35	64.00	64.00
8	63.78	63.42	63.09	62.70	62.31	62.23	63.20	63.20	63.20	63.38	64.00	64.00
9	63.77	63.41	63.08	62.69	62.30	62.27	63.20	63.20	63.20	63.41	64.00	64.00
10	63.76	63.40	63.07	62.68	62.29	62.30	63.20	63.20	63.20	63.43	64.00	64.00
11	63.74	63.38	63.06	62.66	62.27	62.33	63.20	63.20	63.20	63.46	64.00	64.00
12	63.73	63.37	63.05	62.65	62.26	62.37	63.20	63.20	63.20	63.48	64.00	64.00
13	63.72	63.36	63.03	62.64	62.25	62.40	63.20	63.20	63.20	63.51	64.00	64.00
14	63.71	63.35	63.02	62.62	62.23	62.43	63.20	63.20	63.20	63.54	64.00	64.00
15	63.70	63.34	63.01	62.61	62.22	62.47	63.20	63.20	63.20	63.56	64.00	64.00
16	63.69	63.33	63.00	62.60	62.21	62.50	63.20	63.20	63.20	63.59	64.00	64.00
17	63.67	63.31	62.99	62.58	62.19	62.53	63.20	63.20	63.20	63.61	64.00	64.00
18	63.66	63.30	62.97	62.57	62.18	62.57	63.20	63.20	63.20	63.64	64.00	64.00
19	63.65	63.29	62.96	62.56	62.17	62.60	63.20	63.20	63.20	63.66	64.00	64.00
20	63.64	63.28	62.95	62.55	62.16	62.63	63.20	63.20	63.20	63.69	64.00	64.00
21	63.63	63.27	62.94	62.53	62.14	62.67	63.20	63.20	63.20	63.72	64.00	63.99
22	63.62	63.26	62.92	62.52	62.13	62.70	63.20	63.20	63.20	63.74	64.00	63.98
23	63.60	63.24	62.91	62.51	62.12	62.73	63.20	63.20	63.20	63.77	64.00	63.97
24	63.59	63.23	62.90	62.49	62.10	62.77	63.20	63.20	63.20	63.79	64.00	63.95
25	63.58	63.22	62.88	62.48	62.09	62.80	63.20	63.20	63.20	63.82	64.00	63.94
26	63.57	63.21	62.87	62.47	62.08	62.83	63.20	63.20	63.20	63.85	64.00	63.93
27	63.56	63.20	62.86	62.45	62.06	62.87	63.20	63.20	63.20	63.87	64.00	63.92
28	63.55	63.19	62.84	62.44	62.05	62.90	63.20	63.20	63.20	63.90	64.00	63.91
29	63.53		62.83	62.43	62.04	62.93	63.20	63.20	63.20	63.92	64.00	63.90
30	63.52		62.82	62.42	62.03	62.97	63.20	63.20	63.20	63.95	64.00	63.88
31	63.51		62.81		62.01		63.20	63.20		63.97		63.87



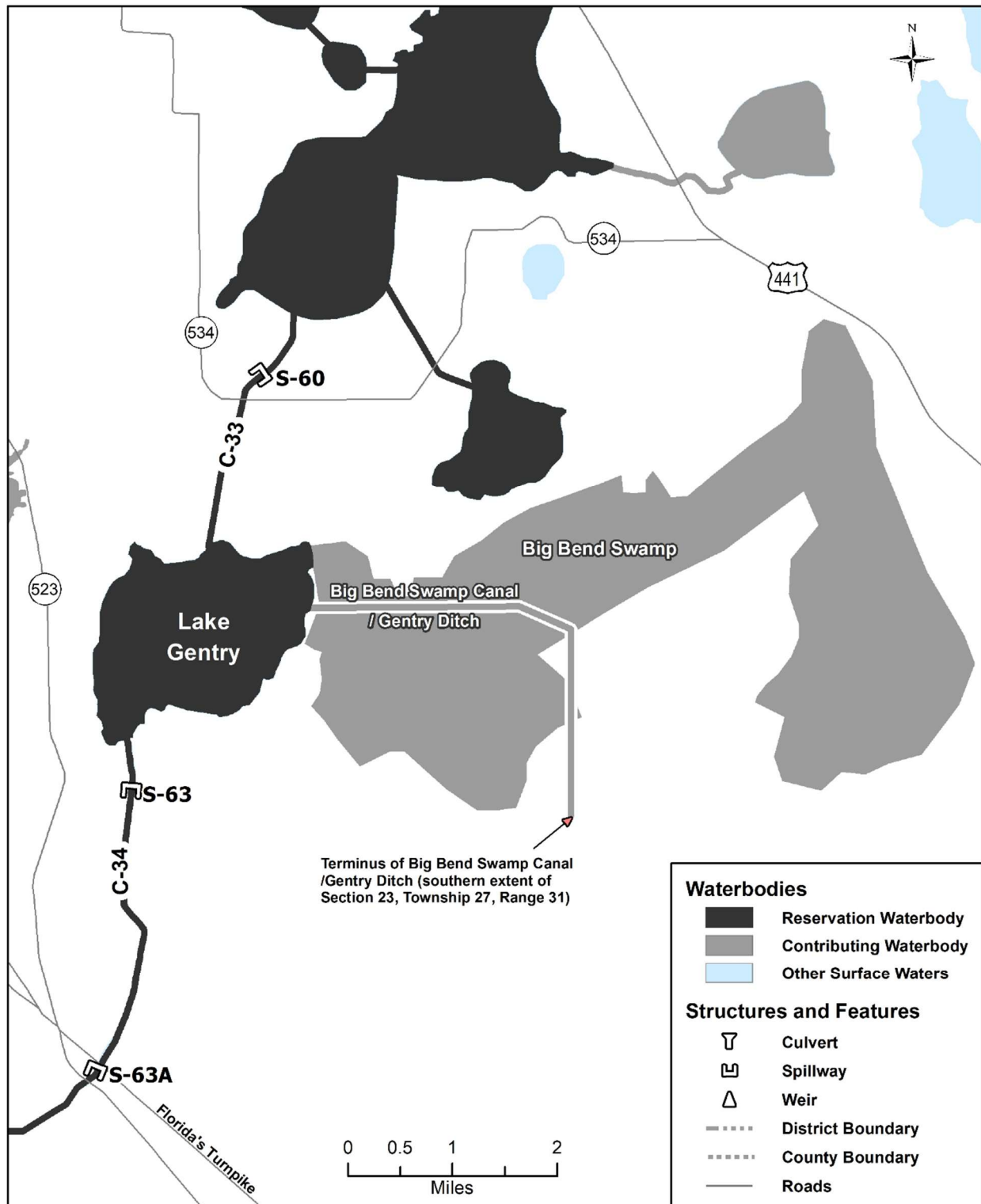


Figure 4-7A. Lake Gentry reservation and contributing waterbodies. Unlabeled waterbodies in this figure are not included in this reservation/contributing waterbody group.



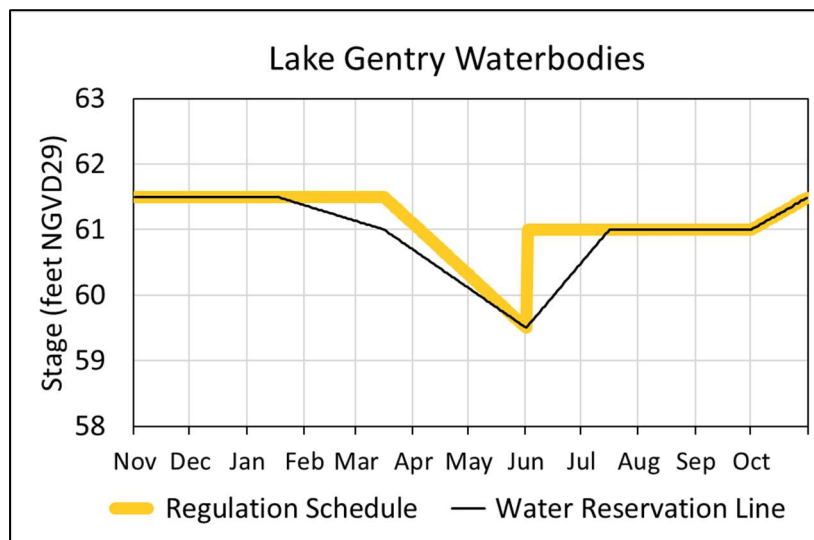


Figure 4-7B. Hydrograph of the current regulation schedule and the water reservation stage at S-63 (water reservation line) for Lake Gentry reservation waterbodies. All water up to the water reservation line is reserved from allocation for protection of fish and wildlife (derived from data in Table 4-7).

Table 4-7. Maximum daily water reservation stages at S-63 for Lake Gentry reservation waterbodies (black line in Figure 4-7B).

Day	January	February	March	April	May	June	July	August	September	October	November	December
1	61.50	61.37	61.13	60.69	60.10	59.50	60.50	61.00	61.00	61.00	61.50	61.50
2	61.50	61.36	61.12	60.67	60.08	59.53	60.53	61.00	61.00	61.02	61.50	61.50
3	61.50	61.35	61.11	60.65	60.06	59.57	60.57	61.00	61.00	61.03	61.50	61.50
4	61.50	61.34	61.10	60.63	60.05	59.60	60.60	61.00	61.00	61.05	61.50	61.50
5	61.50	61.34	61.09	60.61	60.03	59.63	60.63	61.00	61.00	61.06	61.50	61.50
6	61.50	61.33	61.09	60.59	60.01	59.67	60.67	61.00	61.00	61.08	61.50	61.50
7	61.50	61.32	61.08	60.57	59.99	59.70	60.70	61.00	61.00	61.10	61.50	61.50
8	61.50	61.31	61.07	60.55	59.97	59.73	60.73	61.00	61.00	61.11	61.50	61.50
9	61.50	61.30	61.06	60.53	59.95	59.77	60.77	61.00	61.00	61.13	61.50	61.50
10	61.50	61.29	61.05	60.51	59.93	59.80	60.80	61.00	61.00	61.15	61.50	61.50
11	61.50	61.28	61.04	60.49	59.91	59.83	60.83	61.00	61.00	61.16	61.50	61.50
12	61.50	61.28	61.03	60.47	59.89	59.87	60.87	61.00	61.00	61.18	61.50	61.50
13	61.50	61.27	61.03	60.45	59.87	59.90	60.90	61.00	61.00	61.19	61.50	61.50
14	61.50	61.26	61.02	60.44	59.85	59.93	60.93	61.00	61.00	61.21	61.50	61.50
15	61.50	61.25	61.01	60.42	59.83	59.97	60.97	61.00	61.00	61.23	61.50	61.50
16	61.50	61.24	61.00	60.40	59.81	60.00	61.00	61.00	61.00	61.24	61.50	61.50
17	61.50	61.23	60.98	60.38	59.79	60.03	61.00	61.00	61.00	61.26	61.50	61.50
18	61.49	61.22	60.96	60.36	59.77	60.07	61.00	61.00	61.00	61.27	61.50	61.50
19	61.48	61.22	60.94	60.34	59.75	60.10	61.00	61.00	61.00	61.29	61.50	61.50
20	61.47	61.21	60.92	60.32	59.73	60.13	61.00	61.00	61.00	61.31	61.50	61.50
21	61.47	61.20	60.90	60.30	59.71	60.17	61.00	61.00	61.00	61.32	61.50	61.50
22	61.46	61.19	60.88	60.28	59.69	60.20	61.00	61.00	61.00	61.34	61.50	61.50
23	61.45	61.18	60.86	60.26	59.68	60.23	61.00	61.00	61.00	61.35	61.50	61.50
24	61.44	61.17	60.84	60.24	59.66	60.27	61.00	61.00	61.00	61.37	61.50	61.50
25	61.43	61.16	60.82	60.22	59.64	60.30	61.00	61.00	61.00	61.39	61.50	61.50
26	61.42	61.16	60.81	60.20	59.62	60.33	61.00	61.00	61.00	61.40	61.50	61.50
27	61.41	61.15	60.79	60.18	59.60	60.37	61.00	61.00	61.00	61.42	61.50	61.50
28	61.41	61.14	60.77	60.16	59.58	60.40	61.00	61.00	61.00	61.44	61.50	61.50
29	61.40		60.75	60.14	59.56	60.43	61.00	61.00	61.00	61.45	61.50	61.50
30	61.39		60.73	60.12	59.54	60.47	61.00	61.00	61.00	61.47	61.50	61.50
31	61.38		60.71		59.52		61.00	61.00		61.48		61.50

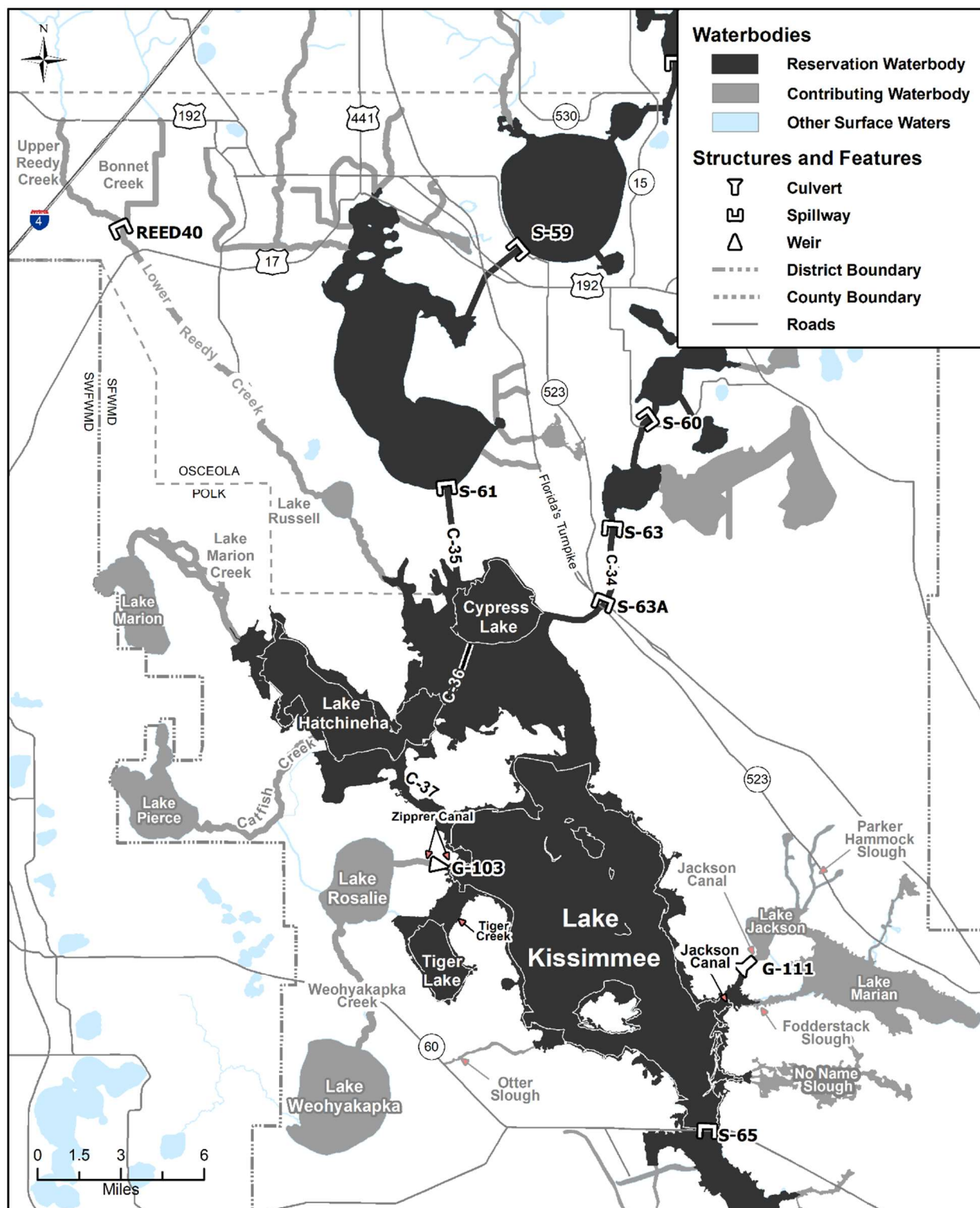


Figure 4-8A. Headwaters Revitalization Lakes reservation and contributing waterbodies.

Unlabeled waterbodies in this figure are not included in this reservation/contributing waterbody group.

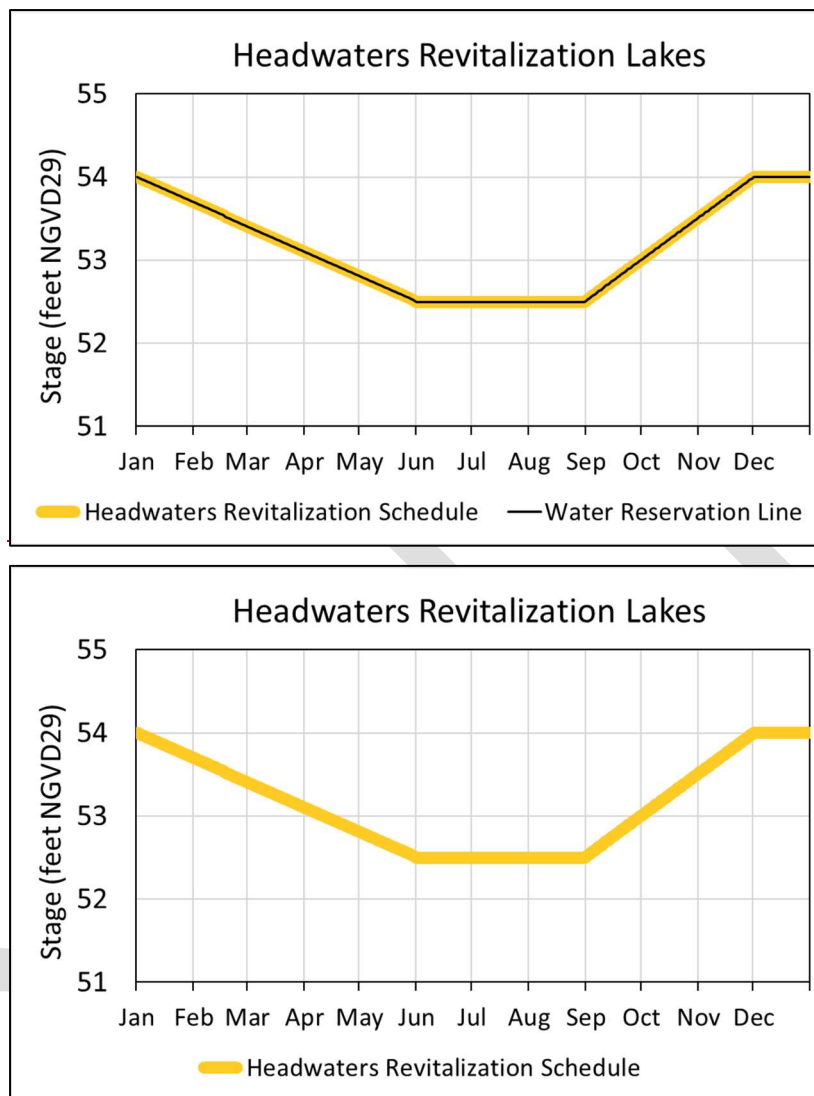


Figure 4-8B. Hydrograph of the authorized Headwaters Revitalization Schedule (HRS) at S-65 ~~and the water reservation stage (water reservation line~~(derived from data in Table 4-8) for the Headwaters Revitalization Lakes reservation waterbodies. ~~All water up to the water reservation line is reserved from allocation for protection of fish and wildlife (derived from data in Table 4-8).~~

Table 4-8. ~~Maximum daily water reservation stages~~Stages for the Headwaters Revitalization Lakes reservation waterbodies (~~black~~yellow line in Figure 4-8B).

Day	January	February	March	April	May	June	July	August	September	October	November	December
1	54.00	53.69	53.41	53.10	52.81	52.50	52.50	52.50	52.52	53.01	53.51	54.00
2	53.99	53.68	53.40	53.09	52.80	52.50	52.50	52.50	52.53	53.02	53.53	54.00
3	53.98	53.67	53.39	53.08	52.79	52.50	52.50	52.50	52.55	53.04	53.54	54.00
4	53.97	53.66	53.38	53.07	52.78	52.50	52.50	52.50	52.57	53.05	53.56	54.00
5	53.96	53.65	53.37	53.06	52.77	52.50	52.50	52.50	52.58	53.07	53.58	54.00
6	53.95	53.64	53.36	53.05	52.76	52.50	52.50	52.50	52.60	53.09	53.59	54.00
7	53.94	53.63	53.35	53.04	52.75	52.50	52.50	52.50	52.61	53.10	53.61	54.00
8	53.93	53.63	53.34	53.03	52.74	52.50	52.50	52.50	52.63	53.12	53.62	54.00
9	53.92	53.62	53.33	53.02	52.73	52.50	52.50	52.50	52.65	53.14	53.64	54.00

Day	January	February	March	April	May	June	July	August	September	October	November	December
10	53.91	53.61	53.32	53.01	52.72	52.50	52.50	52.50	52.66	53.15	53.66	54.00
11	53.90	53.60	53.31	53.00	52.71	52.50	52.50	52.50	52.68	53.17	53.67	54.00
12	53.89	53.59	53.30	52.99	52.70	52.50	52.50	52.50	52.70	53.18	53.69	54.00
13	53.88	53.58	53.29	52.98	52.69	52.50	52.50	52.50	52.71	53.20	53.71	54.00
14	53.87	53.57	53.28	52.97	52.68	52.50	52.50	52.50	52.73	53.22	53.72	54.00
15	53.86	53.56	53.27	52.96	52.67	52.50	52.50	52.50	52.74	53.23	53.74	54.00
16	53.85	53.55	53.26	52.95	52.66	52.50	52.50	52.50	52.76	53.25	53.76	54.00
17	53.84	53.54	53.25	52.94	52.65	52.50	52.50	52.50	52.78	53.27	53.77	54.00
18	53.83	53.53	53.24	52.93	52.64	52.50	52.50	52.50	52.79	53.28	53.79	54.00
19	53.82	53.52	53.23	52.92	52.63	52.50	52.50	52.50	52.81	53.30	53.80	54.00
20	53.81	53.51	53.22	52.91	52.62	52.50	52.50	52.50	52.83	53.32	53.82	54.00
21	53.80	53.50	53.21	52.90	52.61	52.50	52.50	52.50	52.84	53.33	53.84	54.00
22	53.79	53.49	53.20	52.89	52.60	52.50	52.50	52.50	52.86	53.35	53.85	54.00
23	53.78	53.48	53.19	52.88	52.59	52.50	52.50	52.50	52.88	53.36	53.87	54.00
24	53.77	53.47	53.18	52.88	52.58	52.50	52.50	52.50	52.89	53.38	53.89	54.00
25	53.76	53.46	53.17	52.87	52.57	52.50	52.50	52.50	52.91	53.40	53.90	54.00
26	53.75	53.45	53.16	52.86	52.56	52.50	52.50	52.50	52.92	53.41	53.92	54.00
27	53.74	53.44	53.15	52.85	52.55	52.50	52.50	52.50	52.94	53.43	53.93	54.00
28	53.73	53.43	53.14	52.84	52.54	52.50	52.50	52.50	52.96	53.45	53.95	54.00
29	53.72	53.42	53.13	52.83	52.53	52.50	52.50	52.50	52.97	53.46	53.97	54.00
30	53.71		53.12	52.82	52.52	52.50	52.50	52.50	52.99	53.48	53.98	54.00
31	53.70		53.11		52.51		52.50	52.50		53.49		54.00

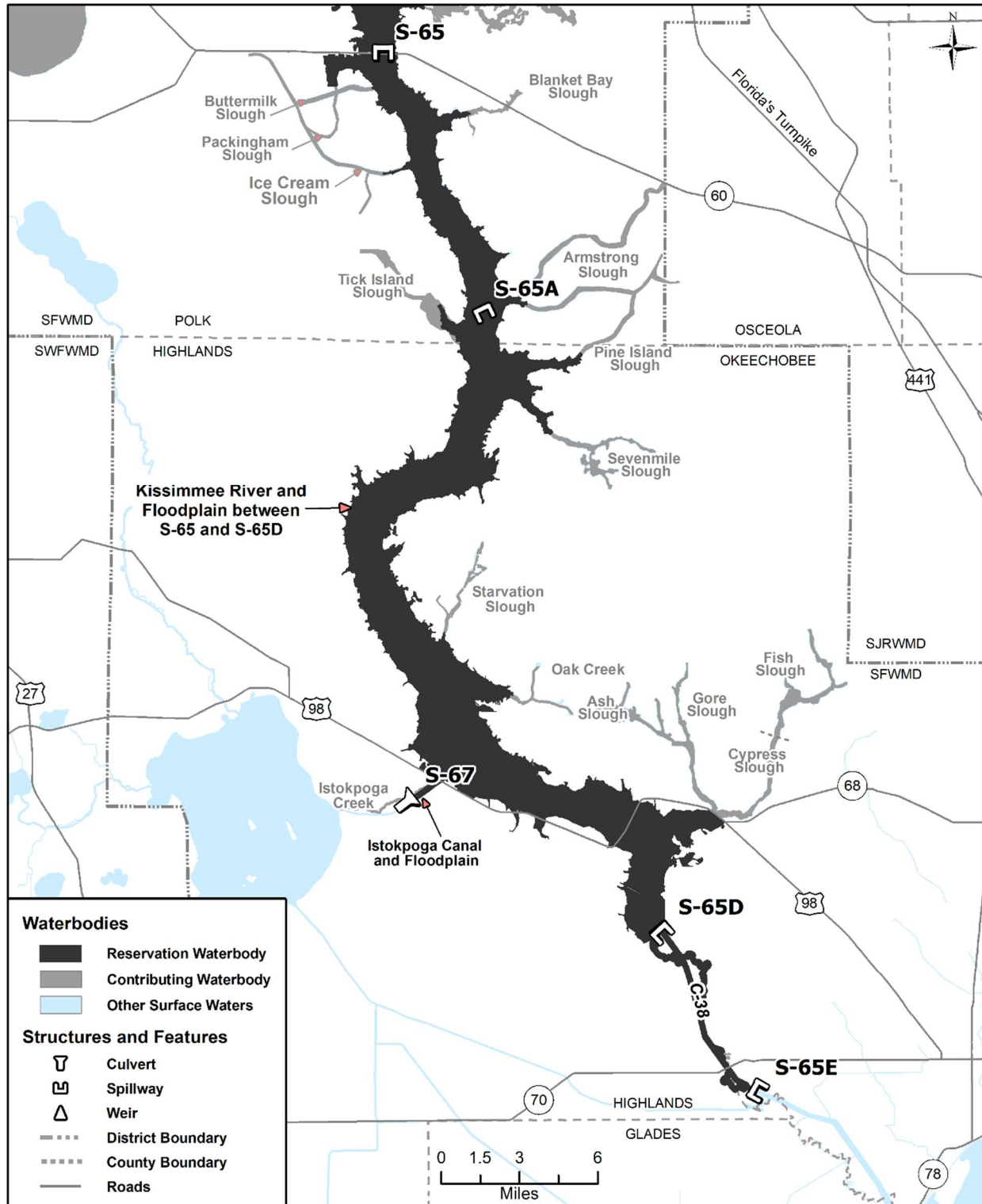


Figure 4-9. Kissimmee River reservation and contributing waterbodies. Unlabeled waterbodies in this figure are not included in this reservation/contributing waterbody group.