

Joint Public Workshop for Minimum Flows and Levels Priority Lists and Schedules for the Central Florida Water Initiative (CFWI) Area



St. Johns River Water Management District (SJRWMD)
Southwest Florida Water Management District (SWFWMD)
South Florida Water Management District (SFWMD)

September 1, 2022

General Public Comment

- If you're participating via Zoom –
use the Raise Hand feature
- If you're participating via phone –
 - *9 Raises Hand
 - *6 Mutes/Unmutes

Agenda

1. Introductions and Background.....Natalie Kraft, SFWMD
2. SJRWMD MFLs Priority List.....Andrew Sutherland, SJRWMD
3. SWFWMD MFLs Priority List.....Doug Leeper, SWFWMD
4. SFWMD MFLs Priority List.....Natalie Kraft, SFWMD
5. Stakeholder Comments
6. Adjourn

Statutory Directive for Minimum Flows and Minimum Water Levels (MFLs)

Water management districts or DEP must establish MFLs that set the limit or level...

“...at which further withdrawals would be significantly harmful to the water resources or ecology of the area.”

Statutory Directive for Reservations

Water management districts may...

“...reserve from use by permit applicants, water in such locations and quantities, and for such seasons of the year, as in its judgment may be required for the protection of fish and wildlife or the public health and safety.”

Subsection 373.223(4), Florida Statutes

District Priority Lists and Schedules Meet Statutory and Rule Requirements

- Prioritization is based on the importance of waters to the State or region, and the existence of or potential for significant harm
- Includes waters experiencing or reasonably expected to experience adverse impacts
- MFLs the districts will voluntarily subject to independent scientific peer review are identified
- Proposed reservations are identified
- Listed water bodies that have the potential to be affected by withdrawals in an adjacent water management district are identified, with CFWI impacts noted

2022 Draft Priority List and Schedule

- Annual priority list and schedule required by statute for each district
- Presented to respective District Governing Boards for approval
- Submitted to FDEP for review by Nov. 15th
- Districts are seeking stakeholder input
- *Written comments may be submitted to/by:*

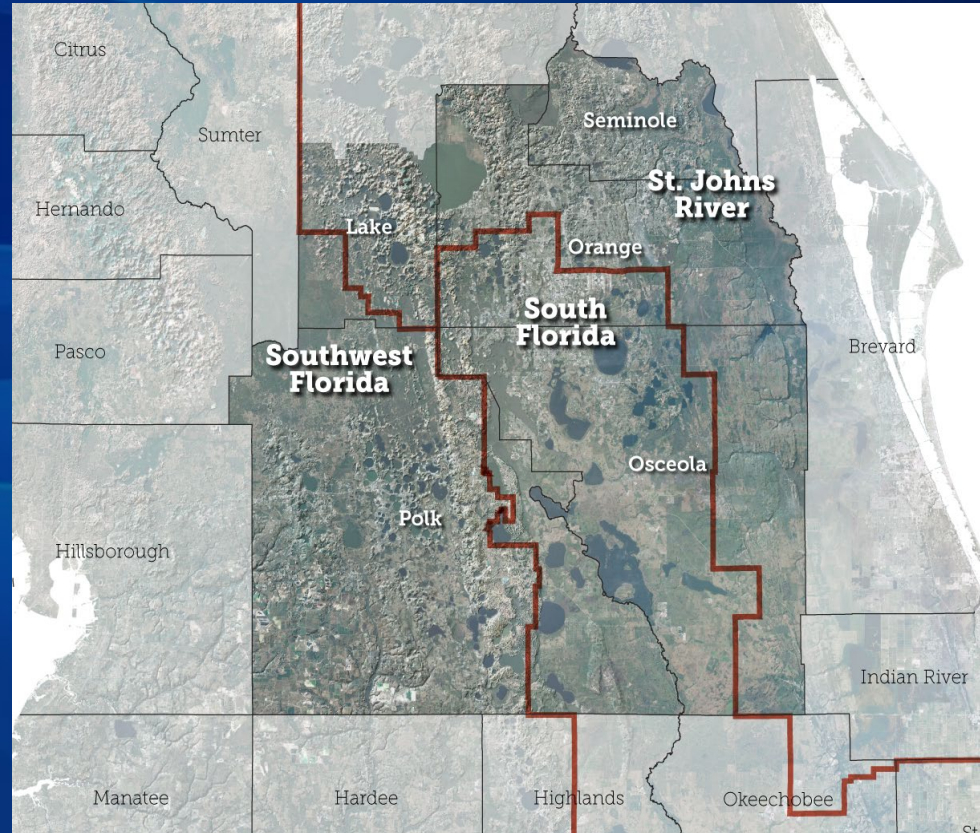
| | | |
|---------------|----------------|---|
| SJRWMD | Oct. 1, 2022 | <i>Andrew Sutherland - asutherl@sjrwmd.com</i> |
| SWFWMD | Sept. 7, 2022 | <i>Doug Leeper - doug.leeper@watermatters.org</i> |
| SFWMD | Sept. 30, 2022 | <i>Natalie Kraft - nkraft@sfwmd.gov</i> |

Florida's Water Management Districts



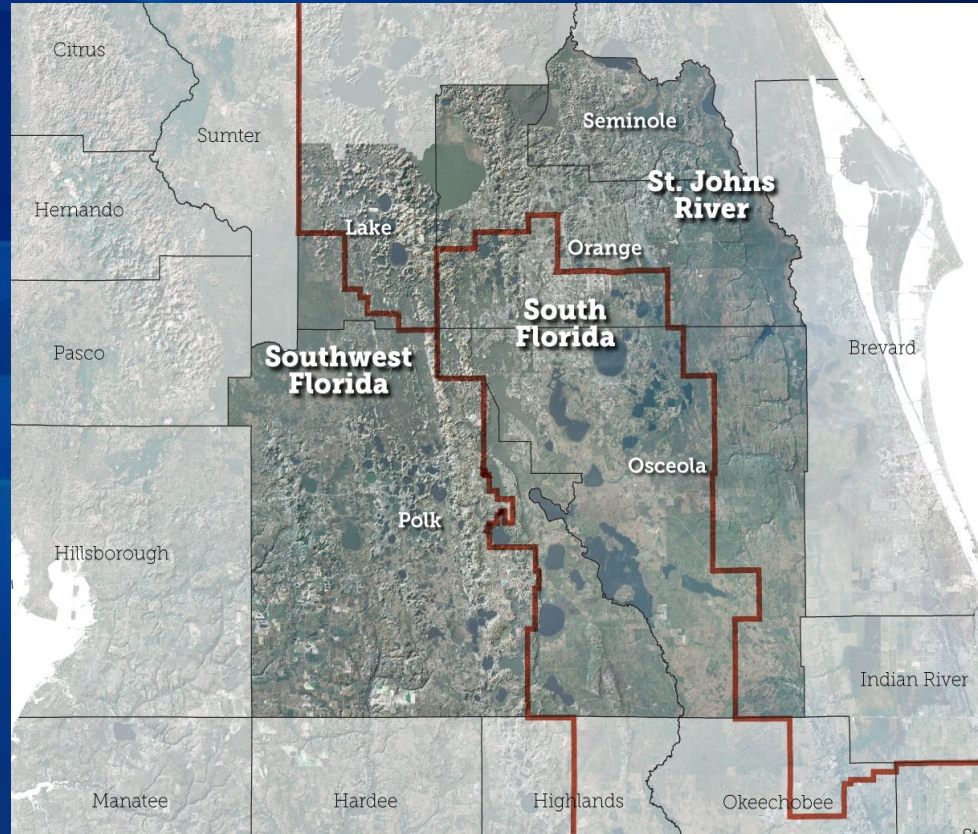
Central Florida Water Initiative

- Collaborative process among FDEP, SJRWMD, SFWMD, SWFWMD, FDACS, regional public water supply utilities, and other stakeholders
- CFWI Planning Area includes Orange, Osceola, Polk, Seminole and southern Lake counties
- Evolved from previous Central Florida Coordination Area efforts



Central Florida Water Initiative (continued)

- Chapter 62-41, Florida Administrative Code, was adopted on June 21, 2021
- New rules govern the consumptive uses of water within the CFWI area
- Rule 62-41.304(1), F.A.C., requires a meeting prior to this workshop between the 3 districts and Florida Department of Environmental Protection



SJRWMD

Draft 2022 Priority List and Schedule

Posted on the SJRWMD web site at

<https://www.sjrwmd.com/minimumflowsandlevels/>

Changes from 2021 List to 2022 List

- **Recalibration of ECFTX**
 - **Affected entire schedule; all CFWI systems**
- **Improvements to Wekiva River Basin MFLs:**
 - **Improving HEC-RAS model; metric development; wetland inundation mapping; recalibration of GW model; Strategy development**
- **Sylvan Lake in Prevention:**
 - **Changes allow for collaborative process for developing Prevention Strategy**

Changes from 2021 List to 2022 List

- **Sylvan Lake, Lake Apshawa and Wekiva systems:** from 2022 to 2023
- **Johns and Prevatt:** from 2023 to 2024
- **East Crystal Lake and Lake Weir:** from 2024 to 2025
- **Lakes Griffin, Harris:** from 2023 to 2025

SJRWMD Draft 2022 MFLs Priority List and Schedule

| Priority Year | New or Re-Evaluation | Water Body Name | WaterbodyType | County |
|---------------|----------------------|---|-----------------|-----------------|
| 2023 | New | Red Bug* | Lake | Seminole |
| | Re-evaluation | Sylvan* | Lake | Seminole |
| | Re-evaluation | Aphawa South* | Lake | Lake |
| | New | Little Wekiva River and associated springs* | River / Springs | Seminole/Orange |
| | Re-evaluation | Wekiva River at SR 46 Bridge* | River | Seminole/Lake |
| | Re-evaluation | Wekiwa Springs* | Springs | Seminole/Orange |
| | Re-evaluation | Rock Springs* | Springs | Orange |
| 2024 | New | Johns* | Lake | Orange/Lake |
| | Re-evaluation | Prevatt* | Lake | Orange |
| 2025 | New | East Crystal* | Lake | Seminole |
| | New | Griffin | Lake | Lake |
| | New | Burrell Basin Lakes (Beauclair, Dora, Eustis, Harris) | Lake | Lake |
| | Re-evaluation | Weir | Lake | Marion |

* Water bodies in the CFWI

SWFWMD

Draft 2022 Priority List and Schedule

Posted on the Minimum Flows and Levels Documents and Reports web page at
<https://www.swfwmd.state.fl.us/projects/mfls>

SWFWMD Adopted MFLs & Reservations

203 MFLs

- 12 freshwater river segments
- 10 springs/spring groups
- 12 estuarine river segments
- 9 aquifer sites
- 34 wetlands
- 126 lakes

2 Reservations

- 1 lake/freshwater river
- 1 sink/estuarine river



SWFWMD Current 2021 Priority List Status & Accomplishments

- **Scheduled 2021 MFLs**

- 29 lake (Barbara, Bird, Brant, Clear [Pasco], Crystal [Hillsborough], Cypress, Dosson, Ellen, Fairy, Halfmoon, Hancock [Pasco], Hanna, Helen, Hobbs, Hunters, Jackson [Hillsborough], Juanita, Lindsey, Merrywater, Mountain [Pasco], Neff, Parker [Polk], Saddleback, Sapphire, Strawberry, Sunset, Sunshine, Taylor, Wimauma) reevaluations **completed**
- Shell Creek (lower segment) **completed**
- DV-1 Suwannee (Dover/Plant City Water Use Caution Area Minimum Aquifer Level reevaluation) **completed**

- **Scheduled 2022 MFLs**

- 2 Highlands County lake (Tulane & Verona) reevaluations **on schedule**
- 1 Polk County lake (North Wales) reevaluation **on schedule**
- Little Manatee River (upper segment) **on schedule**
- Little Manatee River (lower segment) **on schedule**

SWFWMD Current 2021 Priority List Status & Accomplishments (continued)

▪ Scheduled 2023 MFLs

- 3 Polk County lake (Aurora, Easy, Eva) reevaluations *on schedule*
- Charlie Creek *on schedule*
- Horse Creek *on schedule*
- Southern Water Use Caution Area (SWUCA) Saltwater Intrusion Minimum Aquifer Level (SWIMAL) reevaluation *to be delayed*
- Braden River (lower segment) *to be delayed*
- Manatee River (lower segment) *to be delayed*

▪ Scheduled 2024 MFLs

- 5 lake (Eagle, McLeod, Jackson [Highlands], Little Jackson, Wailes) reevaluations *on schedule*
- Withlacoochee River (lower segment) *on schedule*
- Withlacoochee River (upper segment, Holder to Wysong) *on schedule*
- Withlacoochee River (upper segment, Wysong to Croom) *on schedule*
- Withlacoochee River (upper segment, upstream of Croom) *on schedule*

SWFWMD Proposed 2022 Priority List

- **2022 MFLs**

- 2 Highlands County lake (Verona, Tulane) reevaluations
- 1 Polk County lake (North Wales) reevaluation
- Little Manatee River (lower segment)
- Little Manatee River (upper segment)

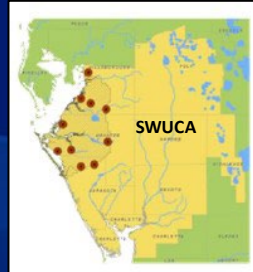
- **2023 MFLs**

- 3 Polk County lake (Aurora, Easy, Eva) reevaluations
- Charlie Creek
- Horse Creek
- ~~SWUCA SWIMAL reevaluation~~
- ~~Braden River (lower segment)~~
- ~~Manatee River (lower segment)~~

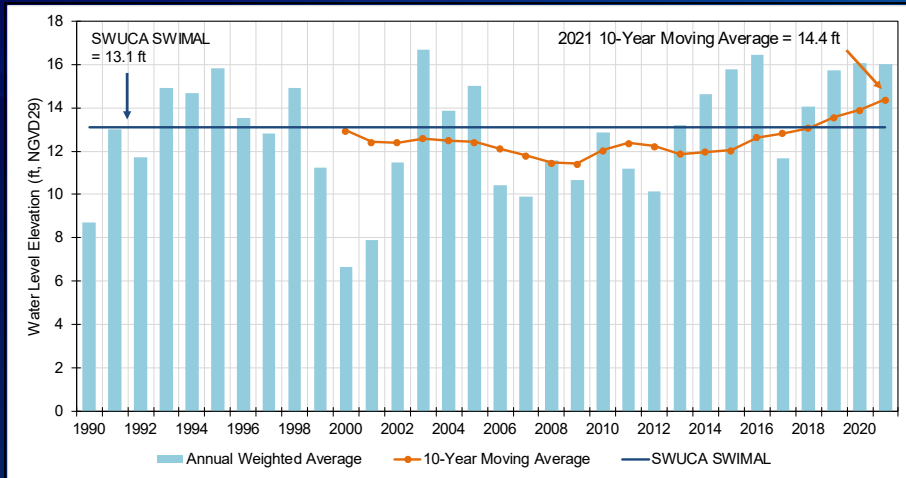
SWFWMD SWUCA Saltwater Intrusion Minimum Aquifer Level Rescheduling

SWIMAL status:

- Weighted-average water level from 10 wells must equal or exceed SWIMAL for 5 consecutive years
- Likely to be achieved in 2023

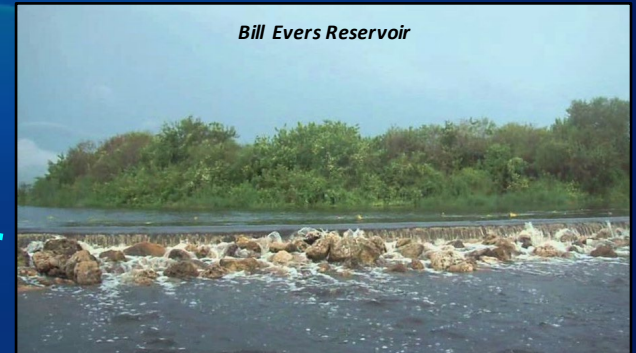


- Recent 10-yr average groundwater withdrawals in the Most Impacted Area of the SWUCA is 20% lower than the 1990s period used to develop SWIMAL
- ~520 mgd SWUCA-wide groundwater withdrawals for recent 10-yr period (through 2019) below 600 mgd target identified for achieving the SWIMAL
- New saltwater intrusion model under development
- Need to replace a well in the SWIMAL well network due to planned SHARP injection well effects



Re-prioritize for completion after the 2025 SWUCA recovery strategy assessment

SWFWMD Lower Braden and Lower Manatee River MFLs Rescheduling



Re-prioritize for completion after 2025

SWFWMD Proposed 2022 Priority List (continued)

- **2024 MFLs**
 - 5 SWUCA lake reevaluations
 - Highlands County: Jackson (second), Little Jackson (second)
 - Polk County: Eagle (second), McLeod (second), Wailes (second)
 - Withlacoochee River (lower segment)
 - Withlacoochee River (upper segment; Holder to Wysong)
 - Withlacoochee River (upper segment; Wysong to Croom)
 - Withlacoochee River (upper segment; Upstream from Croom)

SWFWMD Proposed 2022 Priority List (continued)

- **2025 MFLs**

- Peace River (upper segment; Zolfo Springs to Ft. Meade) reevaluation new addition
- Peace River (upper segment; Ft. Meade to Bartow) reevaluation new addition
- Peace River (upper segment; upstream of Bartow) reevaluation new addition

- **2025 Reservation**

- Lake Hancock/Lower Saddle Creek reservation reevaluation new addition

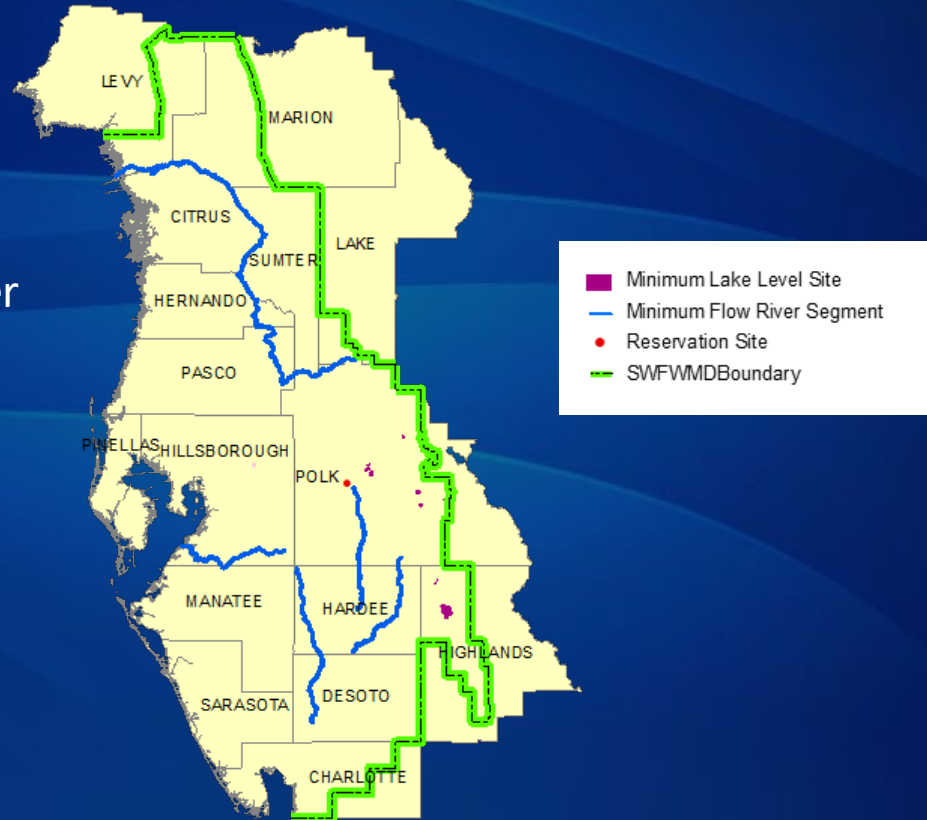
SWFWMD Proposed MFLs & Reservations through 2025

22 MFLs (new & reevaluation)

- 11 lakes
- 11 river segments (9 freshwater & 2 estuarine)

1 Reservation (review)

- 1 lake/freshwater river



SFWMD

Draft 2022 Priority List and Schedule

MFL Website:

www.sfwmd.gov/our-work/mfl

Reservations Website:

www.sfwmd.gov/our-work/water-reservations

SFWMD Approved Priority List and Schedule Posted in Two Locations on Website

Minimum Flows & Minimum Water Levels

Requirements for minimum flows and minimum water levels for Florida's water bodies prevent significant harm by permitted water withdrawals.

One of the ways in which the South Florida Water Management District is working to protect and conserve Florida's water resources is through the minimum flows and minimum water levels (MFLs) program. Establishing MFLs is an important step in the District's work of planning for adequate water supplies while also protecting water resources from significant harm. In South Florida, minimum levels have been established for lakes, wetlands and aquifers. Minimum flows have been set for rivers, streams and estuaries.

MFLs are defined as the minimum flows or minimum water levels, adopted by the District Governing Board pursuant to Sections 373.042 and 373.0421, Florida Statutes, at which further withdrawals would be significantly harmful to the water resources or ecology of the area. Establishing MFLs for all of South Florida is an ongoing effort. The [Priority Water Body List and Schedule](#) for developing or re-evaluating MFLs is submitted annually to the Florida Department of Environmental Protection. The District publishes a draft technical document summarizing the methods, models and data that provide the scientific basis of an MFL, which may be subject to periodic re-evaluation and/or scientific peer review by an independent panel of experts. The MFL development process also includes public rule development meetings that allow interested stakeholders opportunities to provide comments on the draft technical document and proposed draft rule language prior to Governing Board approval and adoption. The MFL is then implemented through the District's consumptive use permitting and water supply planning programs.

Florida Statewide Annual Report

The Florida Department of Environmental Protection has published the Florida Statewide Annual Report on Total

<https://www.sfwmd.gov/our-work/mfl>

2022 South Florida Environmental Report

Open the files listed below by clicking on the text.

2022 Highlights

Volume I: The South Florida Environment | Volume III: Annual Permit Reports

2022 Transmittal Letter

Acronyms, Abbreviations, and Units of Measurement | Glossary | Conversion of Units of Measurement

VOLUME II

DISTRICT ANNUAL PLANS AND REPORTS

Chapter 1: Introduction to Volume II

Chapter 2: Fiscal Performance Accountability Report Fiscal Year 2021

Chapter 3: 2021 Priority Water Bodies

Appendix 3-1: 2021 Priority Water Body List and Schedule

Chapter 4: Five-Year Capital Improvements Plan

Chapter 5A: Fiscal Year 2022 Five-Year Water Resource Development Work Program

Appendix 5A-1: Projects Associated with a Basin Management Action Plan for Fiscal Year 2021 through Fiscal Year 2025

On July 14, 2022, Chapter 5A was updated to fix inconsistencies between estimated funds in tables and in the text.

https://apps.sfwmd.gov/sfwmd/SFER/2022_sfer_final/v2/sfer_toc_v2.pdf

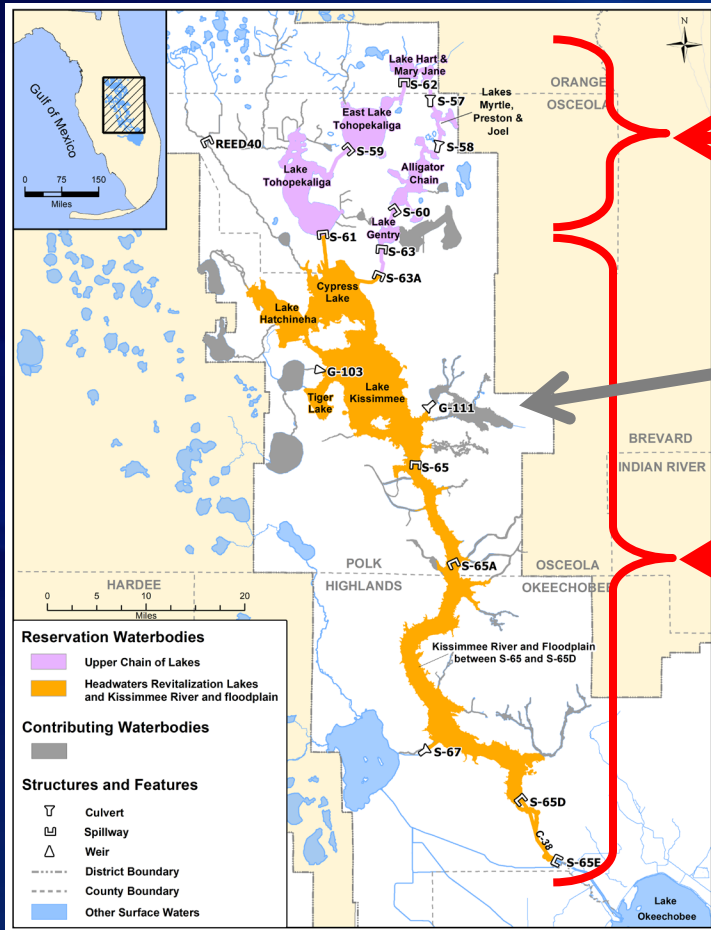
SFWMD Draft 2022 Priority List & Schedule

- There are no waterbodies proposed for the 2022 Priority List within the Central Florida Water Initiative Area
- Districtwide Priority List will be presented at the October 13 Governing Board meeting

Kissimmee River and Chain of Lakes Water Reservations

- Water reservation rules effective March 2021
- Regionally significant area covering 172,500 acres
 - Mostly within the CFWI Area
 - Includes Upper Chain of Lakes, Headwater Lakes and the Kissimmee River and floodplain
- Protects the existing public investment of nearly \$800 Million for the Kissimmee River Restoration

Kissimmee River and Chain of Lakes Water Reservations



Upper Chain of Lakes
Water reserved up to the "Water Reservation Line"

Contributing Waterbodies
Quantities of water required to protect fish & wildlife are reserved

Headwater Lakes & Kissimmee River
All water reserved

Surficial Aquifer System
Quantities of water required to protect fish & wildlife are reserved



February 8, 2018 Riverwoods pasture, Phase II restoration area

Stakeholder Comment

Written comments may be submitted to/by:

| | | |
|---------------|----------------|---|
| SJRWMD | Oct. 1, 2022 | <i>Andrew Sutherland - asutherl@sjrwmd.com</i> |
| SWFWMD | Sept. 7, 2022 | <i>Doug Leeper - doug.leeper@watermatters.org</i> |
| SFWMD | Sept. 30, 2022 | <i>Natalie Kraft - nkraft@sfwmd.gov</i> |

Governing Board meetings open to the public:

| | | |
|---------------|---------------|-----------------|
| SJRWMD | Oct. 11, 2022 | Palatka |
| SWFWMD | Oct. 18, 2022 | Tampa |
| SFWMD | Oct. 13, 2022 | West Palm Beach |

General Public Comment

- If you're participating via Zoom –
use the Raise Hand feature

- If you're participating via phone –
 - *9 Raises Hand
 - *6 Mutes/Unmutes

A scenic view of a lake at sunrise. The sun is low on the horizon, creating a warm, golden glow. The sky is filled with soft, wispy clouds. In the foreground, tall reeds are silhouetted against the bright light. The water is calm, reflecting the sun and the sky. A misty layer hangs over the water, and a line of trees is visible in the distance.

THANK YOU

Lake Myrtle