

# **Northern Everglades Program Planning and Amendments to Chapter 40E-61 Florida Administrative Code**

**Steffany Olson  
Science Supervisor  
South Florida Water Management District  
November 17, 2020**

# Agenda

- Northern Everglades Program Planning Process
- Roles and Responsibilities
- SFWMD Watershed Protection Plans
- Chapter 40E-61, Works of the District Rules
- Introduction to DBHYDRO Insights (separate presentation)



# Northern Everglades Planning Process

**Total Maximum  
Daily Loads**



**Basin Management  
Action Plans**



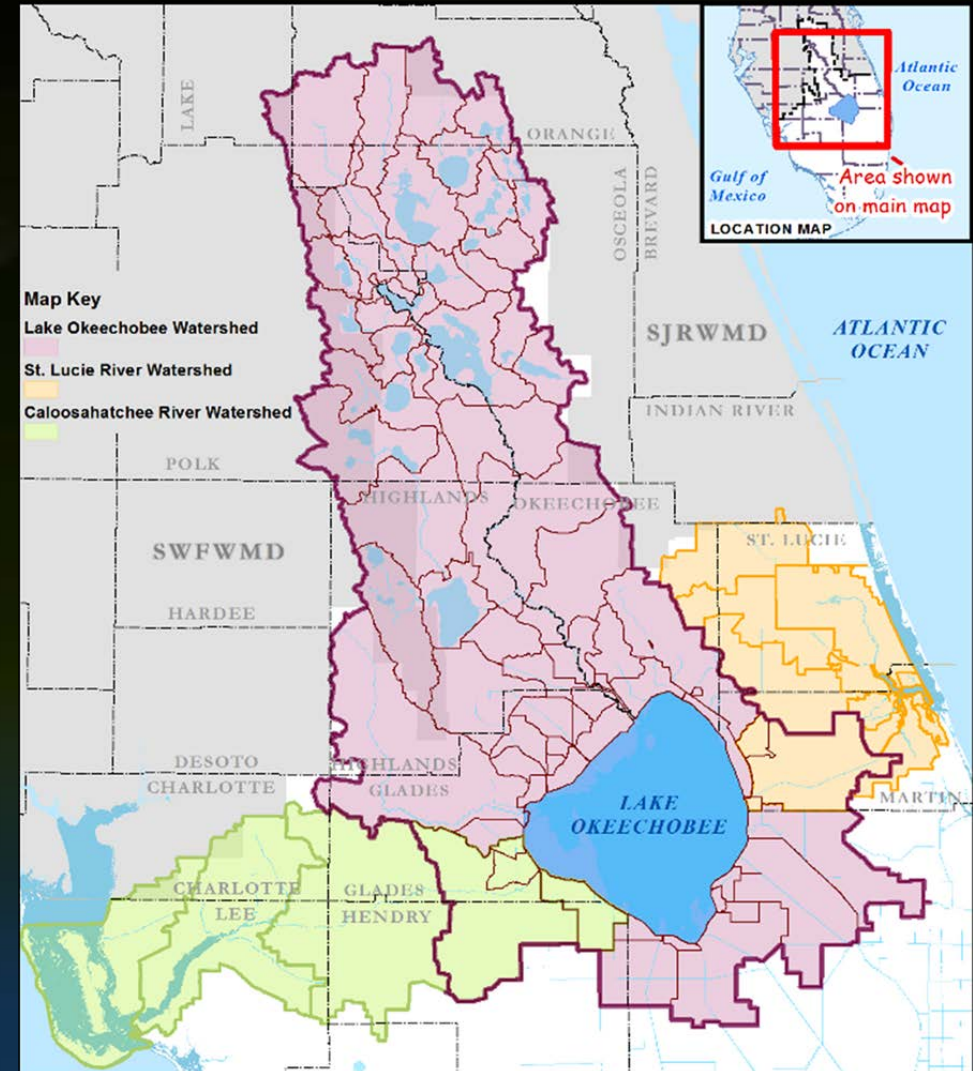
**Projects & Programs**

**FDEP**

**SFWMD**

**FDACS**

**Local  
Entities**





# SOUTH FLORIDA WATER MANAGEMENT DISTRICT



Local  
Entities

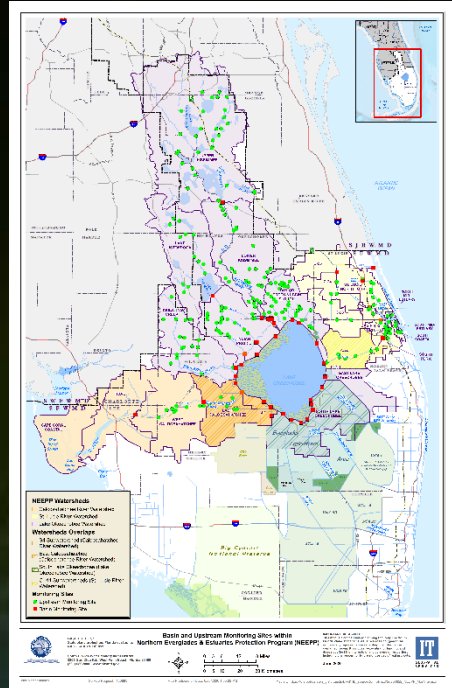
- **FDEP** - establishes TMDLs, BMAPs, alternative technologies, urban and non-ag sources pollutants programs, ERP, alternative technologies
- **FDACS** - agricultural BMPs, technology projects, BMP research.
- **SFWMD** - hydrologic improvements, storage and treatment projects, alternative technologies, 40E-61, Environmental Resource Permits (ERP)
- **Local entities** – ordinances, programs, projects





# Watershed Protection Plans

**Monitoring  
Network**



**Source Control  
Programs**

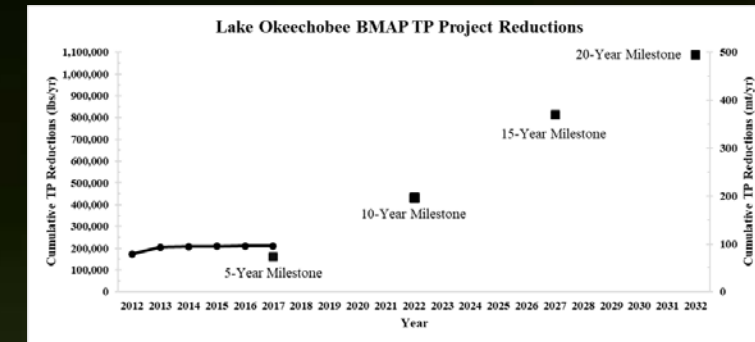
SOUTH FLORIDA WATER MANAGEMENT DISTRICT  
Notice of Environmental Resource  
Or Surface Water Management Permit



**Project  
Performance**



**BMAP  
Progress**

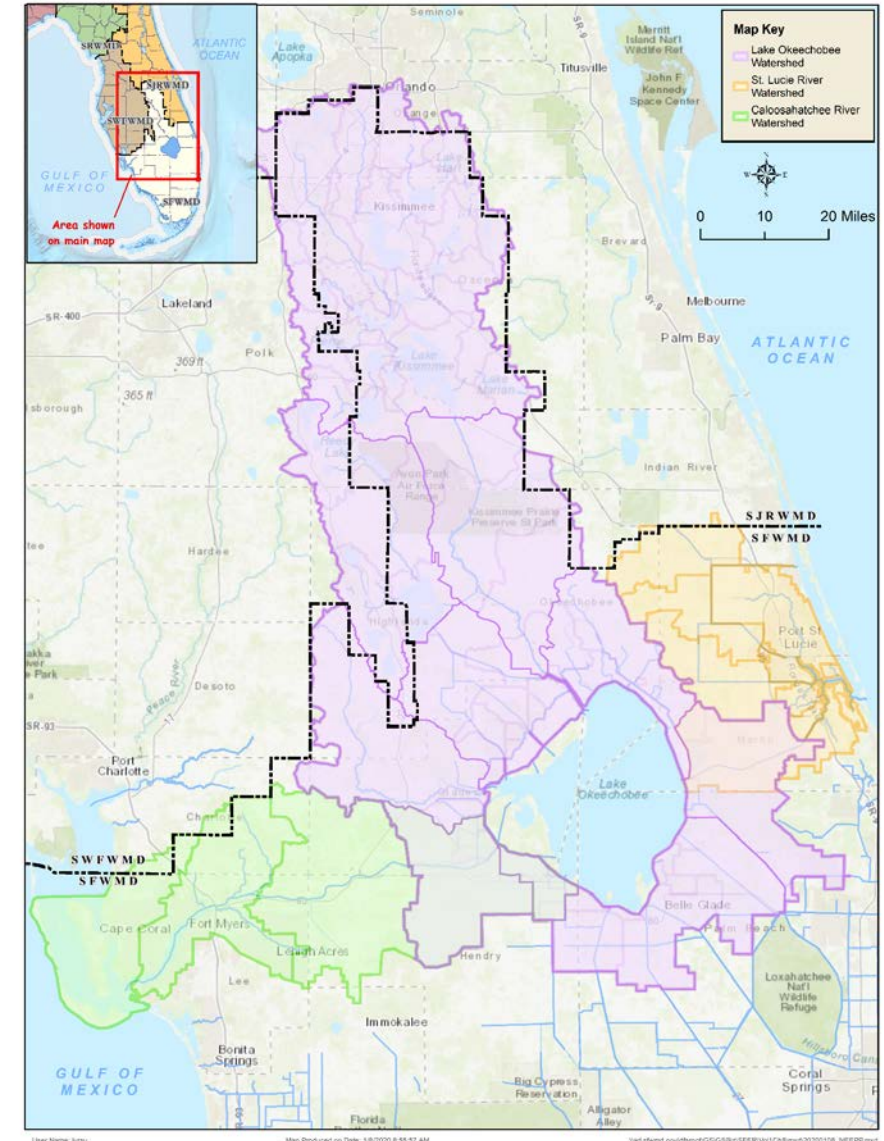


**Watershed  
Protection Plans**

**BMAP  
Updates**

# Watershed Protection Plan Review Process

- Accelerating Actions
- Public Engagement
- Transparency
- Focused Approach to Solve Problems





# Accelerating Actions

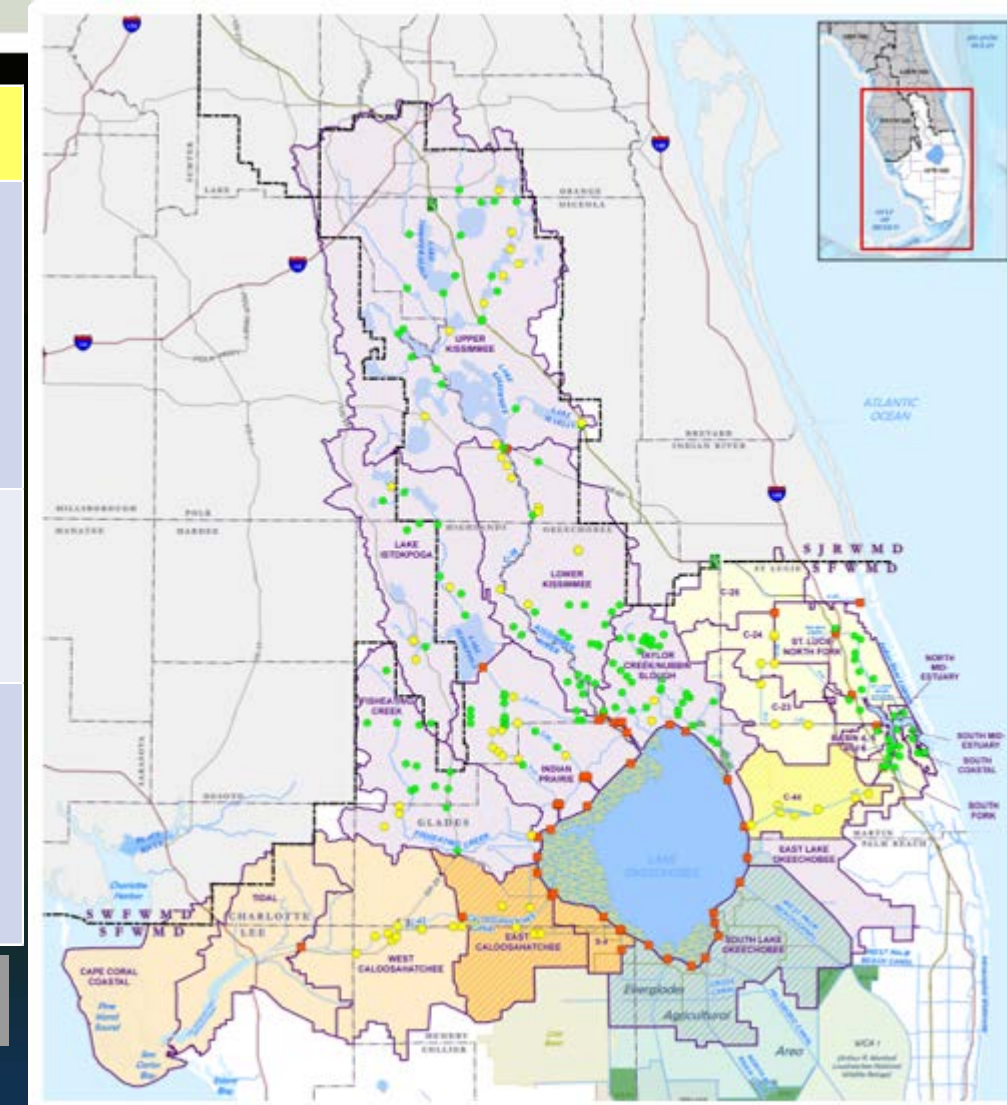
- Expanded Monitoring Efforts
  - Monitoring initiated February 2020
- Development of Projects Team
- Development of Coordinating Agency Legacy Phosphorus Team
- BMPs on District Leased Lands
- Watershed Protection Plan (WPP) Annual Reviews
- Selected focus areas



# Expanded Monitoring Network

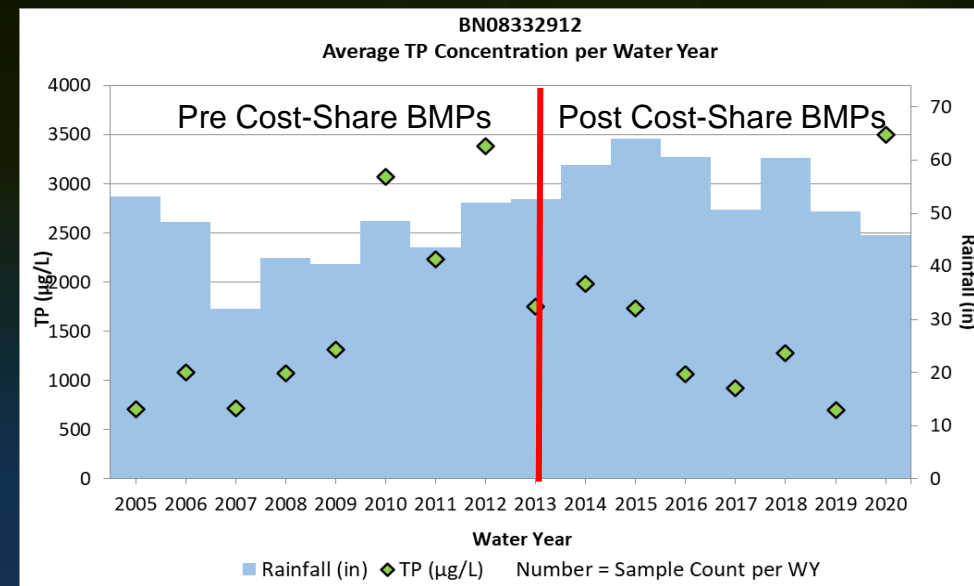
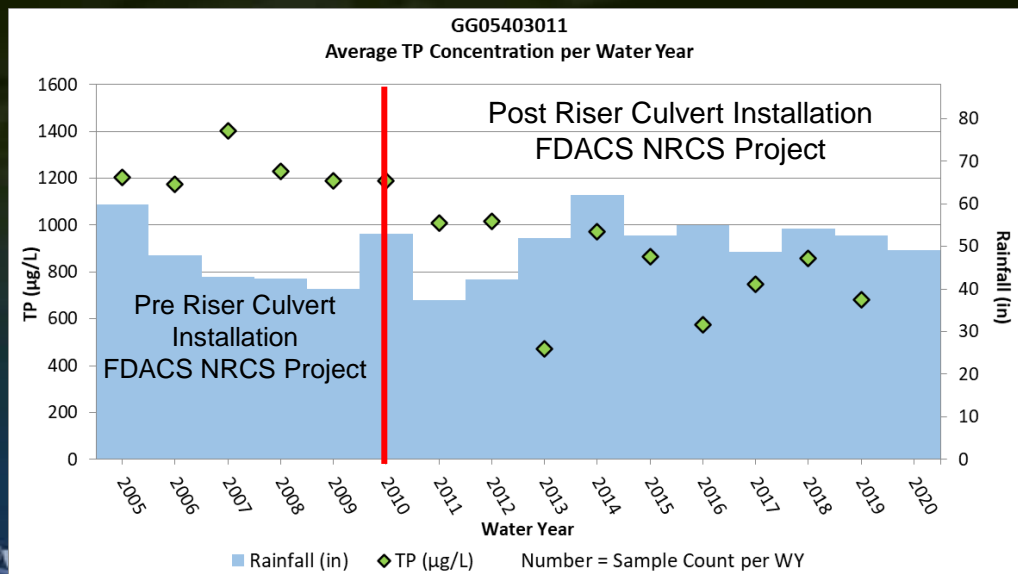
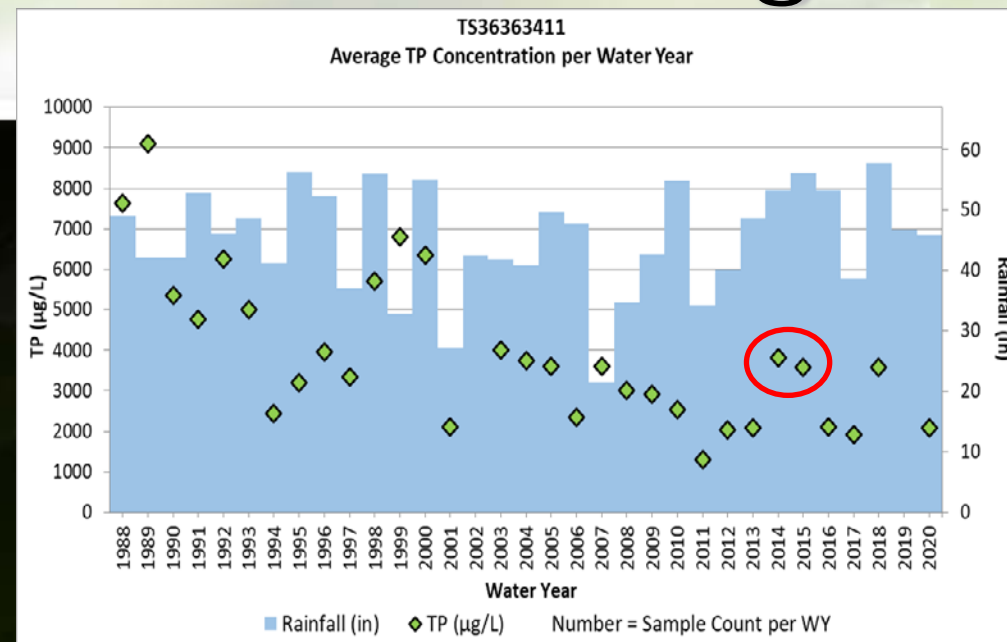
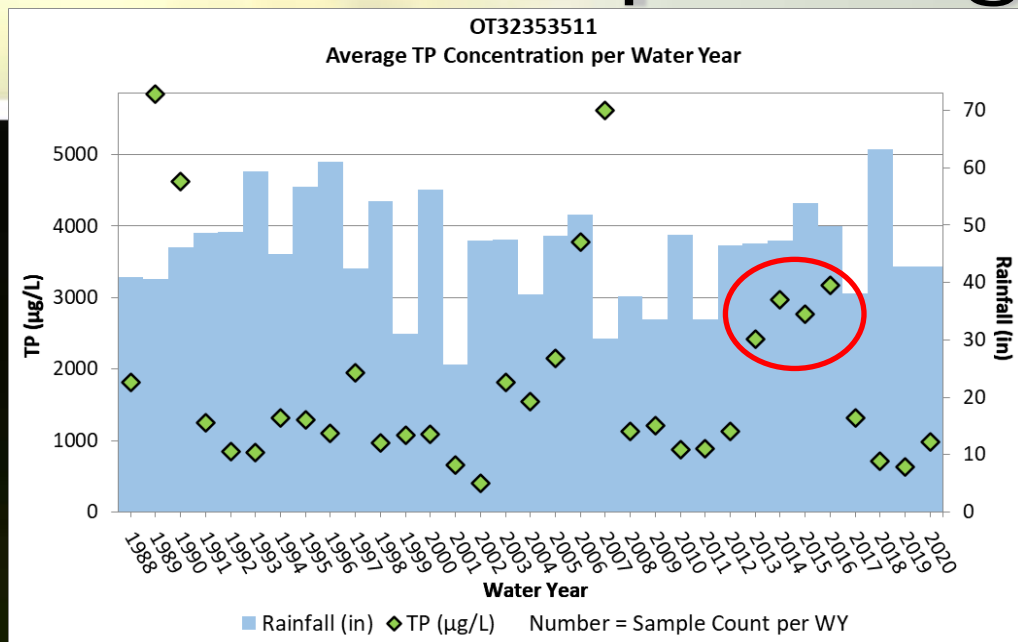
Elements	Existing Upstream	Expanded Upstream
Number of Upstream Sites	LOW- 113 SLRW- 31 CRW- No SFWMD sites; Local Entities sample coastal & tidal basins	LOW- 37 SLRW- 15 CRW- 15
Collection Method & Frequency	LOW- Monthly Grabs SLRW- Biweekly Grabs CRW- Not applicable	All- Biweekly Grabs
Monitored Parameters	LOW- TP (all sites), TN (40 sites) SLRW- TP, OPO4, TN, NH4, Nox, Conductivity CRW- Not applicable	All- TP, OPO4 TN, NH4, NOx, pH, Temperature, Dissolved Oxygen, Conductivity

211 upstream monitored sites across over 5 million acres

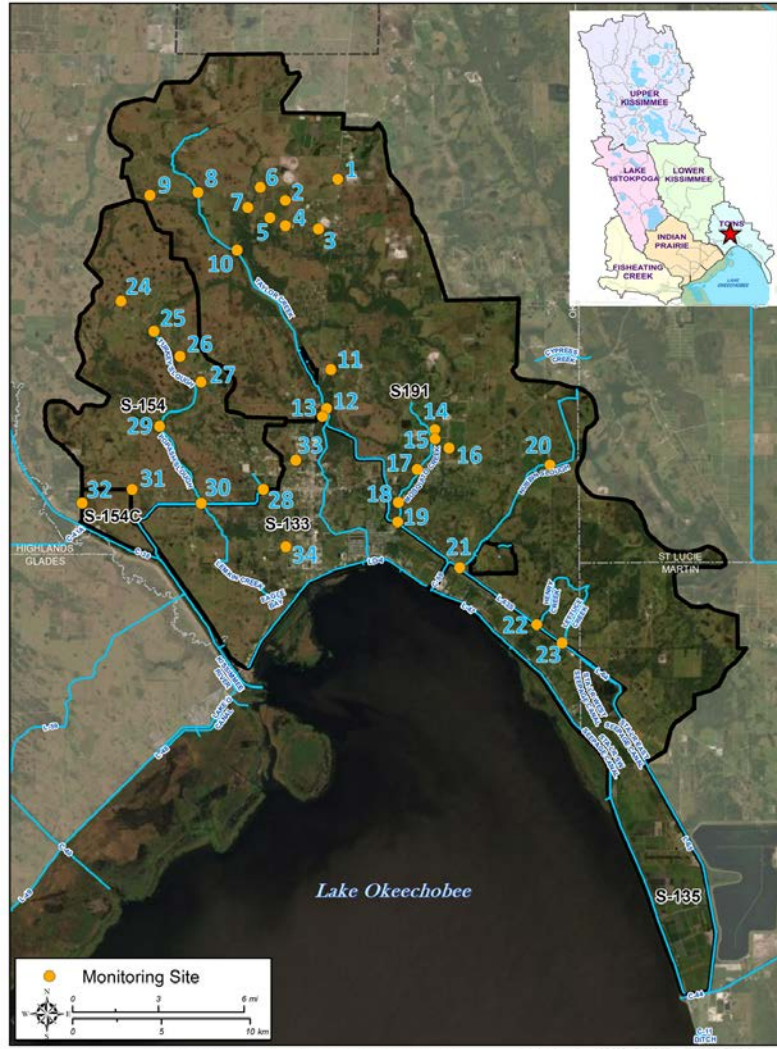




# SFWMD Reporting Actions and Progress



# Upstream Monitoring Hydrologic Evaluations



- Evaluation of the approximate drainage area represented by the 34 upstream monitoring sites in the Taylor Creek/Nubbin Slough Subwatershed.
- Estimated completion June 2022.
- Benefits
  - to identify areas represented by the water quality data.
  - to groundtruth WAM model delineation to determine if the other sites can be quickly delineated using that model



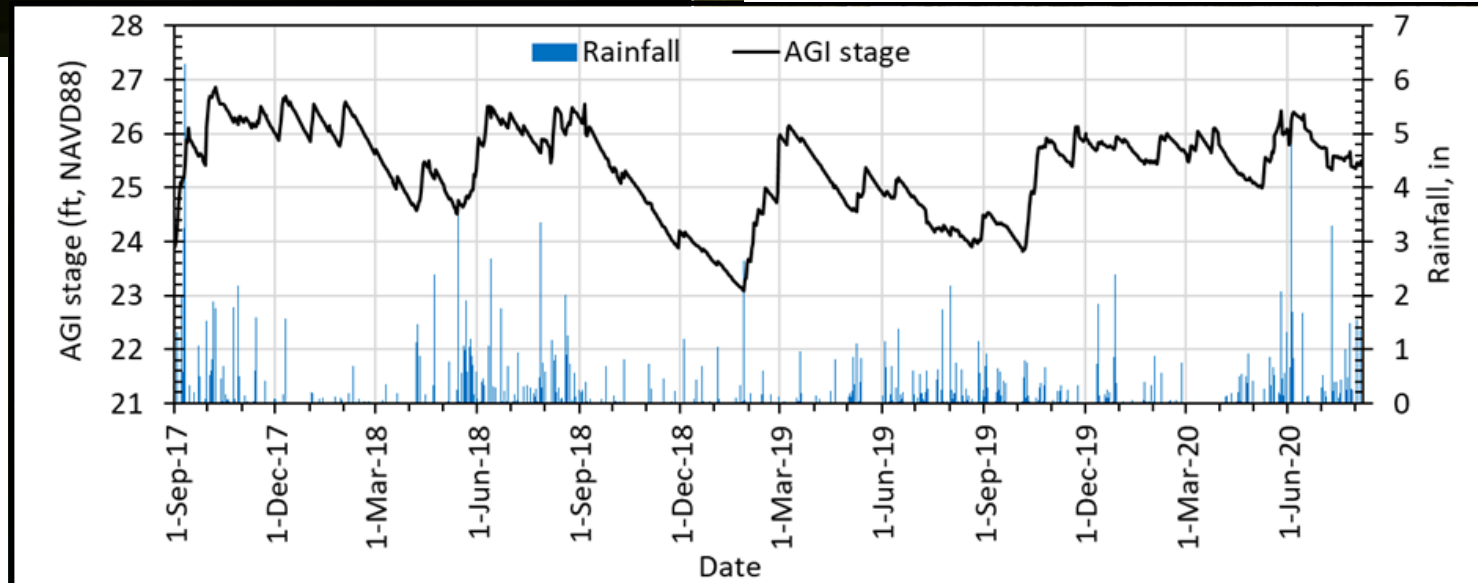
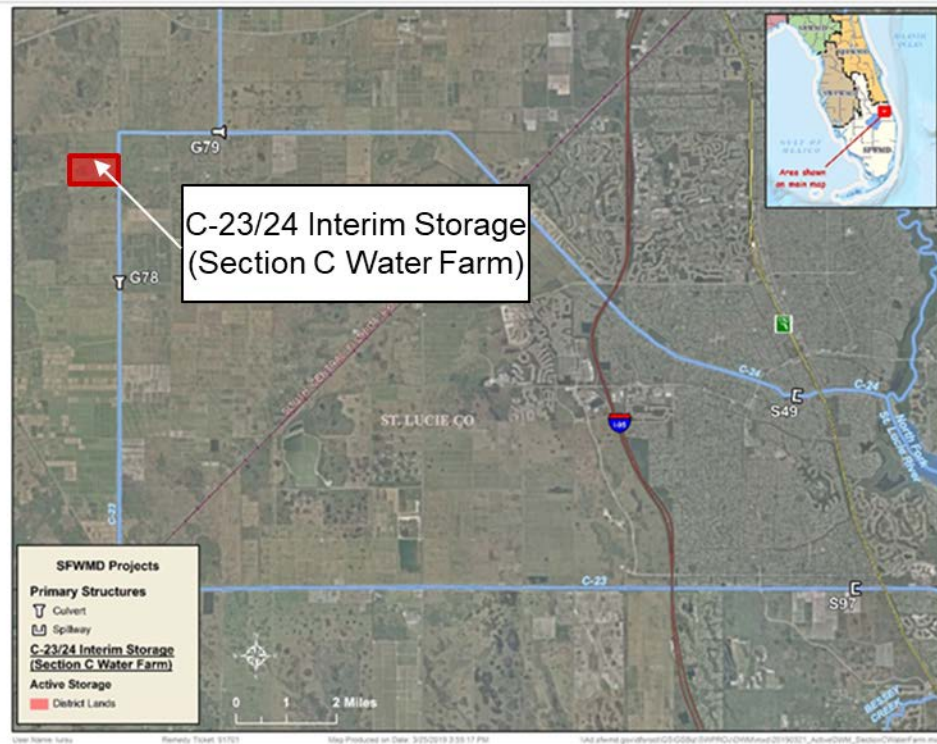
# Monitoring of Projects

## C23/24 Section C Interim Storage Project – Above Ground Impoundment (AGI)

- Interim DWM water farm project on 297 acres reservoir constructed on public land.
- Pump and store excess surface water from the C-23 Canal during the wet season.
- Estimated average annual storage of 2,950 acre-feet.



**AGI stage and rainfall at Section C**

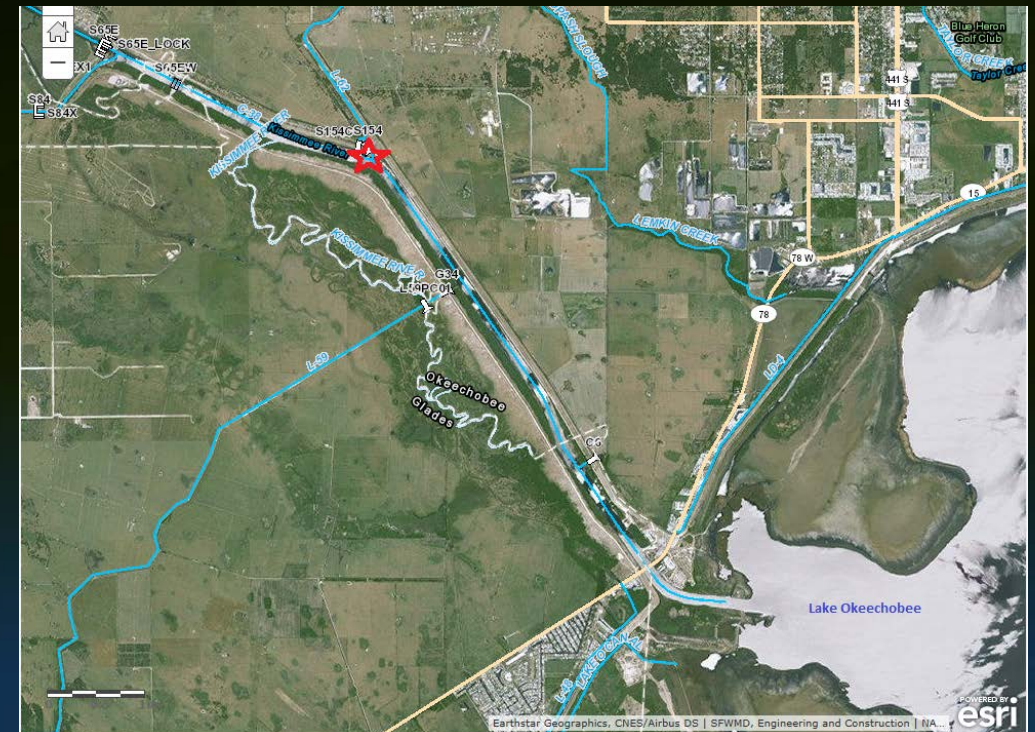


Variable	WY2018	WY2019	WY2020	Average
Storage (ac-ft)	2,902	3,308	2,647	2,953
Rainfall (inch)	45.7	56.1	48.3	50

# Special Teams

- Coordinating Agency Legacy P Team
  - Improve knowledge
  - Develop potential solutions
- Northern Everglades Projects Team
  - SFWMD subject matter experts
  - Evaluate and review best projects

- Results – SFWMD applied for FDEP grants for 9 new project grants





# BMPs on Leased Lands

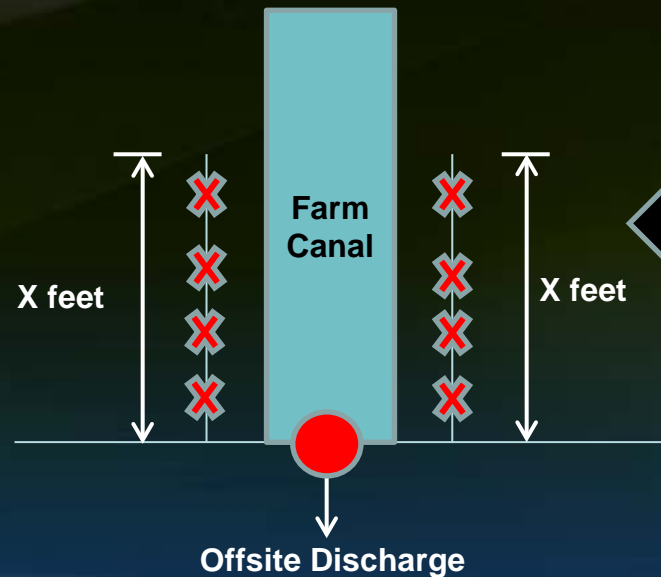
Internal Fencing



Vegetation Control and Fencing



- FDACS BMPs for leased lands
- District requires implementation of all applicable BMPs and includes Land Management Requirements.



Fencing of waterways to minimize the impact of cattle to the off-site discharge location



# Annual Review of Watershed Protection Plans

SOUTH FLORIDA WATER MANAGEMENT DISTRICT

***DRAFT***

## ***2021 South Florida Environmental Report***

**Chapter 8A: Northern Everglades and Estuaries Protection Program – Annual Progress Report**

**Chapter 8B: Lake Okeechobee Watershed Protection Plan Annual Progress Report**

Appendix 8B-1: Water Year 2020 Lake Okeechobee Watershed Upstream Monitoring

**Chapter 8C: St. Lucie River Watershed Protection Plan Annual Progress Report**

Appendix 8C-1: Water Year 2020 St. Lucie River Watershed Upstream Monitoring

**Chapter 8D: Caloosahatchee River Watershed Protection Plan Annual Progress Report**

Appendix 8D-1: Water Year 2020 Caloosahatchee River Watershed Upstream Monitoring

[https://apps.sfwmd.gov/sfwmd/SFER/2021\\_sfer\\_draft/sfer\\_toc\\_v1.pdf](https://apps.sfwmd.gov/sfwmd/SFER/2021_sfer_draft/sfer_toc_v1.pdf)



# Public Engagement

- Conducted Watershed Protection Planning Public Workshops
- Updated Protection Planning Website

<https://www.sfwmd.gov/wpps>

- Developing a new tool to view Water Quality Data



**DBHYDR**  
*insights*

# Public Workshops

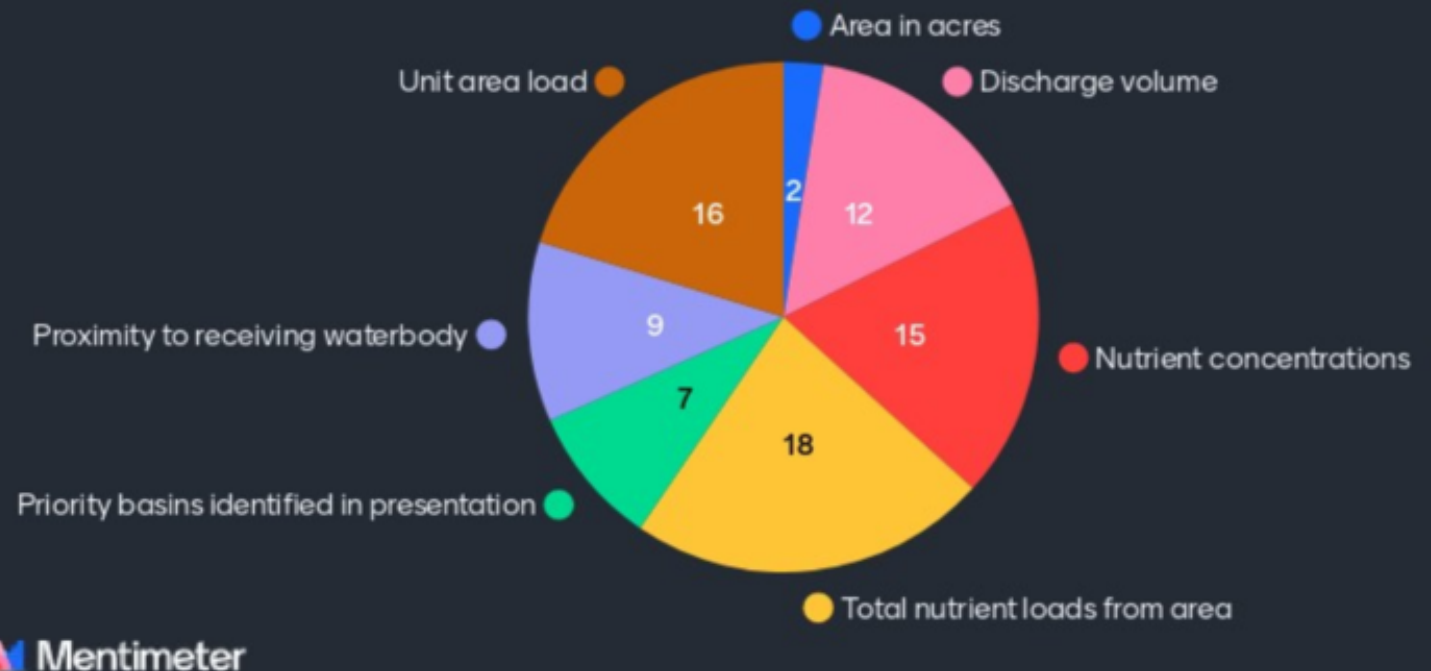
## Past WPP Workshops:

- Jun. 26 – Kickoff and Overview
- Jul. 21 – Lake Okeechobee Watershed
- Aug. 28 – St. Lucie River Watershed
- Sep. 2 – Caloosahatchee River Watershed

## Upcoming WPP Workshop:

- Dec. 2 – Update with the Coordinating Agencies

Which of the following considerations should be given top priority when determining where assessments or more projects are needed?



<https://www.sfwmd.gov/wpps>



# Selected Focus Areas

## ➤ Lake Okeechobee Watershed

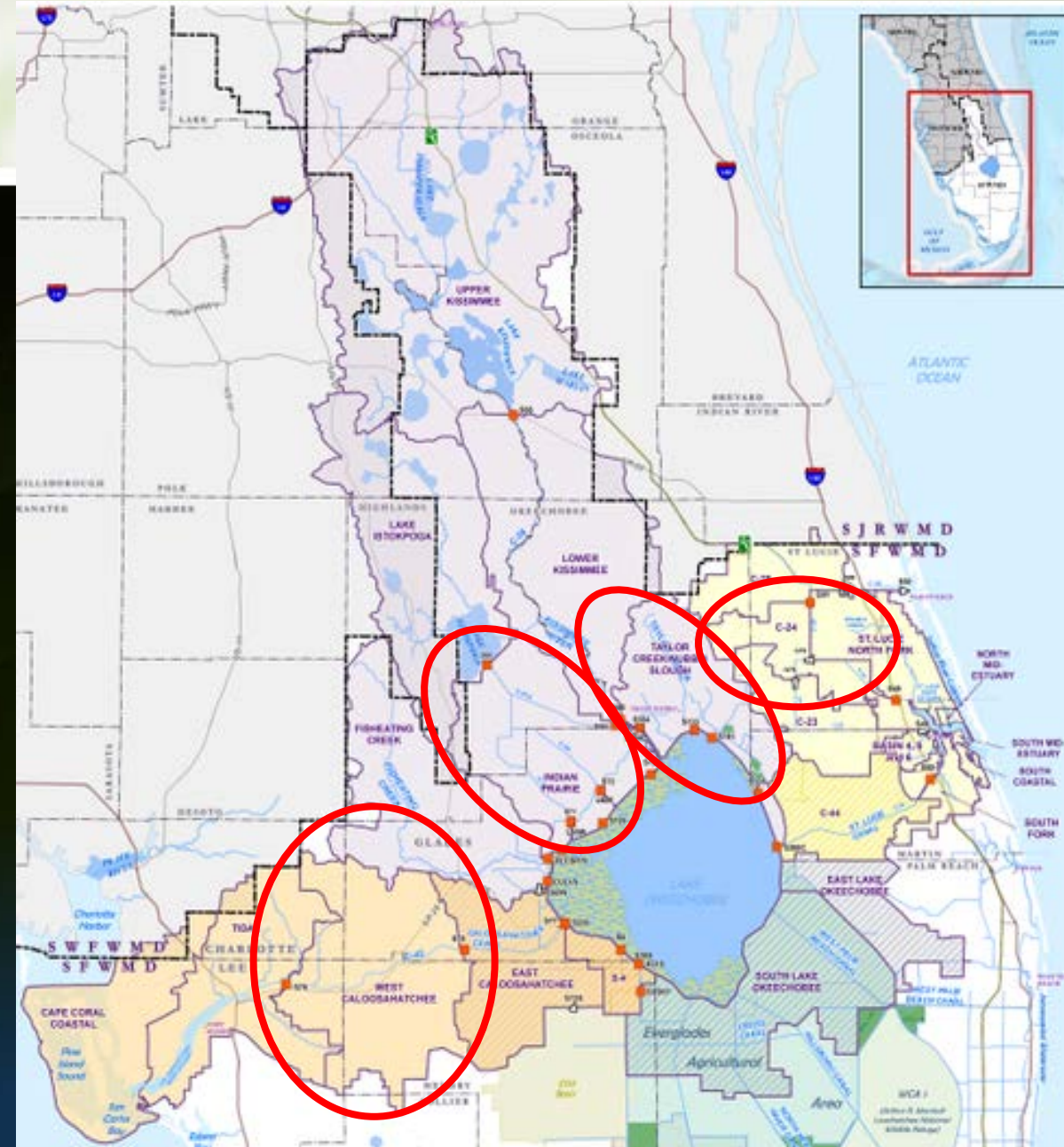
- Taylor Creek Nubbin Slough Subwatershed
  - S-191, S-154 and S-154C Basins
- Indian Prairie Subwatershed
  - C-41A, C-40, C-41 and L-59W Basins

## ➤ St. Lucie River Watershed

- C-24 and Ten Mile Creek Basins

## ➤ Caloosahatchee River Watershed

- West Caloosahatchee Basin



# Focus Area Assessment Approach


- Account for existing programs and projects
- Define gaps
- Identify solutions


**Table 8C-11.** Project timeline for current SFWMD and CERP projects in the SLRW.


Basin	Project Name	Project Status FY2020	FY2015	FY2016	FY2017	FY2018	FY2019	FY2020	FY2021	FY2022	FY2023	FY2024	FY2025	FY2026
C-23	Allapattah Flats Parcels A and B Natural Resources Conservation Service (NRCS) Wetland Reserve Program (WRP) Wetland Restoration	Construction												
C-23	Bluefield Grove Water Farm	Design												
C-23	Bull Hammock Ranch Water Management Area (WMA) <sup>a</sup>	O&M												
C-23	Spur Land and Cattle Water Farm <sup>b</sup>	O&M												
C-24	Adams-Russakis Ranch WMA	Construction												
C-24	C-23/24 Interim Storage Section C Water Farm	O&M												
C-24	C-23/24 Interim Storage Section B	Planned												
C-44	C44 Reservoir and STA	Construction												
C-44	Gaulkins Water Farm Expansion	O&M												
North Fork	North Fork Floodplain Restoration	Planned												
TMC	TMC Water Preserve Area	O&M												
C-23 & C-24	C-23/C-24 Reservoirs and STA	Design												
C-23 & C-44	C-23/C-44 Interconnect	Design												
C-23, C-24, C-44, & South Fork	Natural Water Storage and Treatment Areas	Planned												

a. Contract expires on March 26, 2025.

b. Contract expires on September 26, 2021.

 = Planned

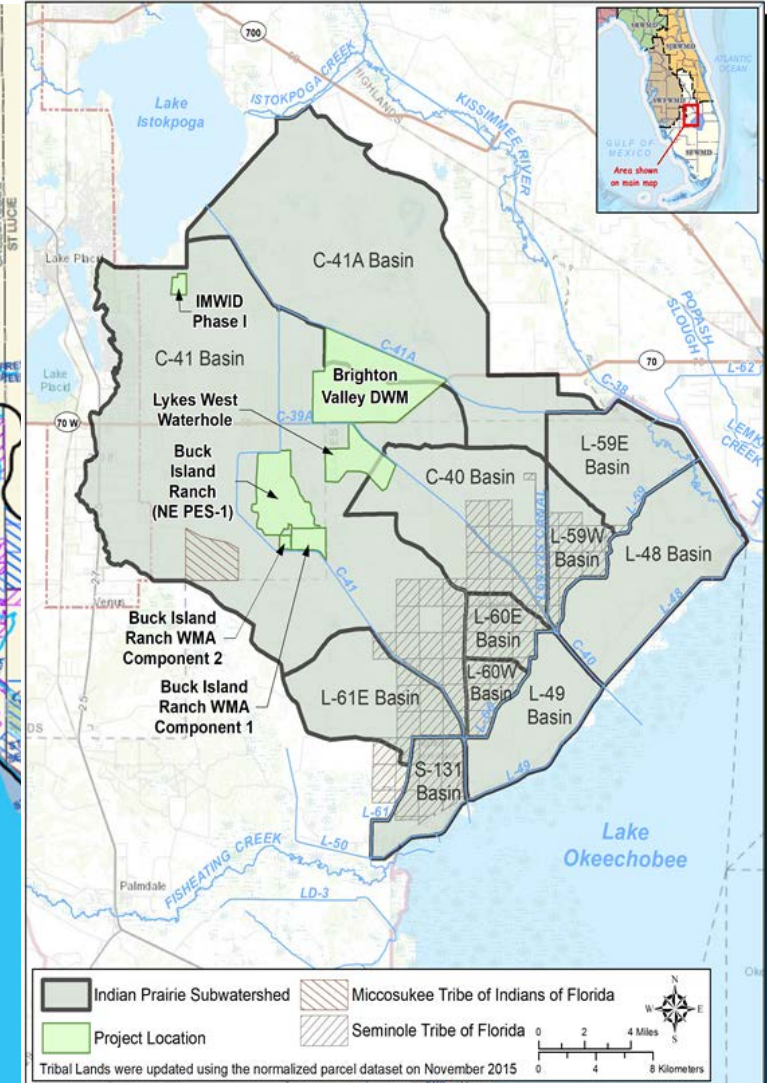
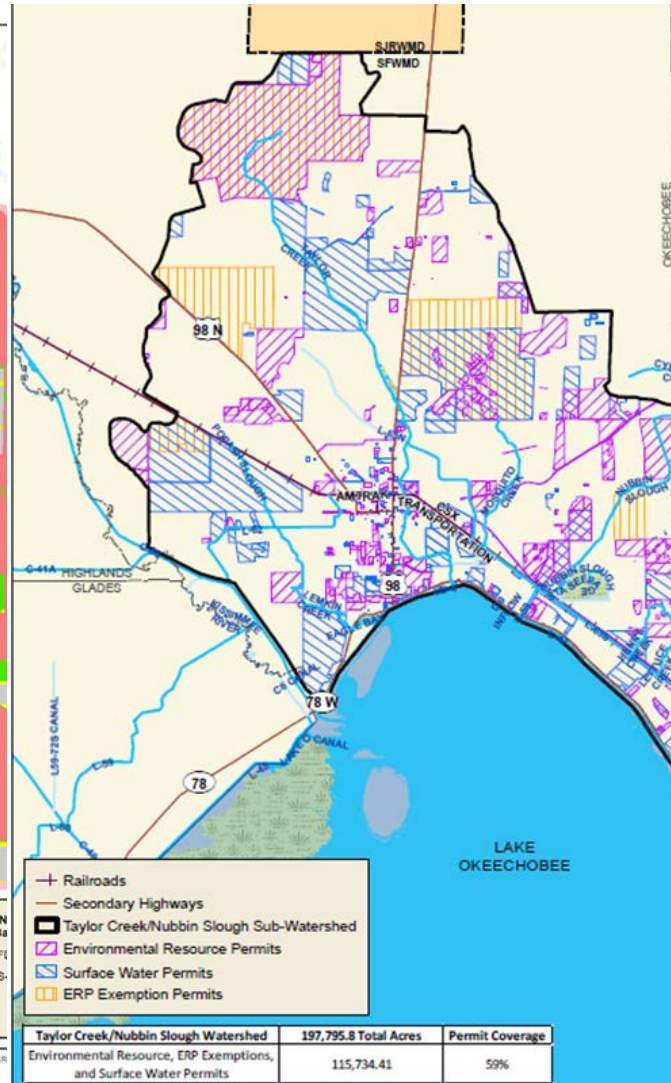
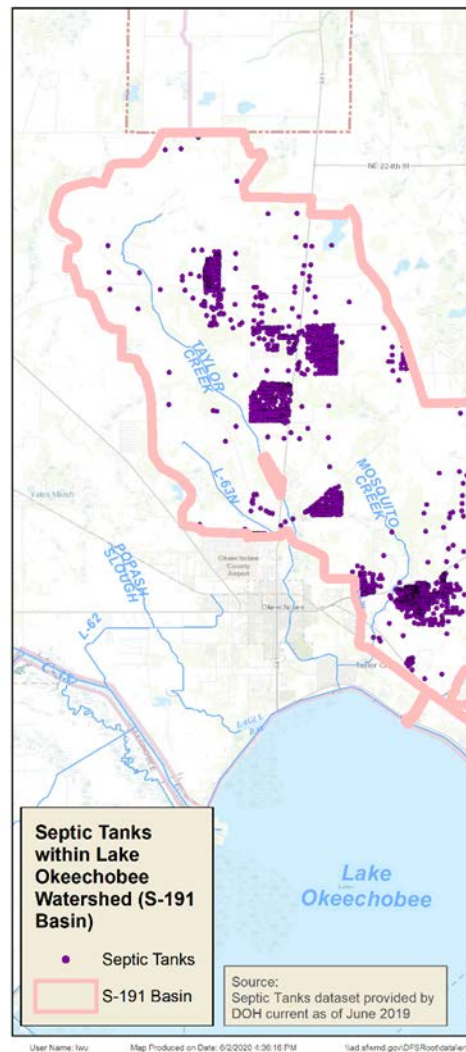
 = Design

 = Construction

 = O&M



# Account for Existing Programs and Projects





# Environmental Resource Permit (ERP)

- Regulates alteration of surface water flows
- Must not cause or contribute to water quality problems
- Discharge to Outstanding Florida Waters and impaired waters must demonstrate additional 50% water quality treatment volume and site-specific pollutant loading analysis
- Water Bill requires revisions to increase nutrient removal



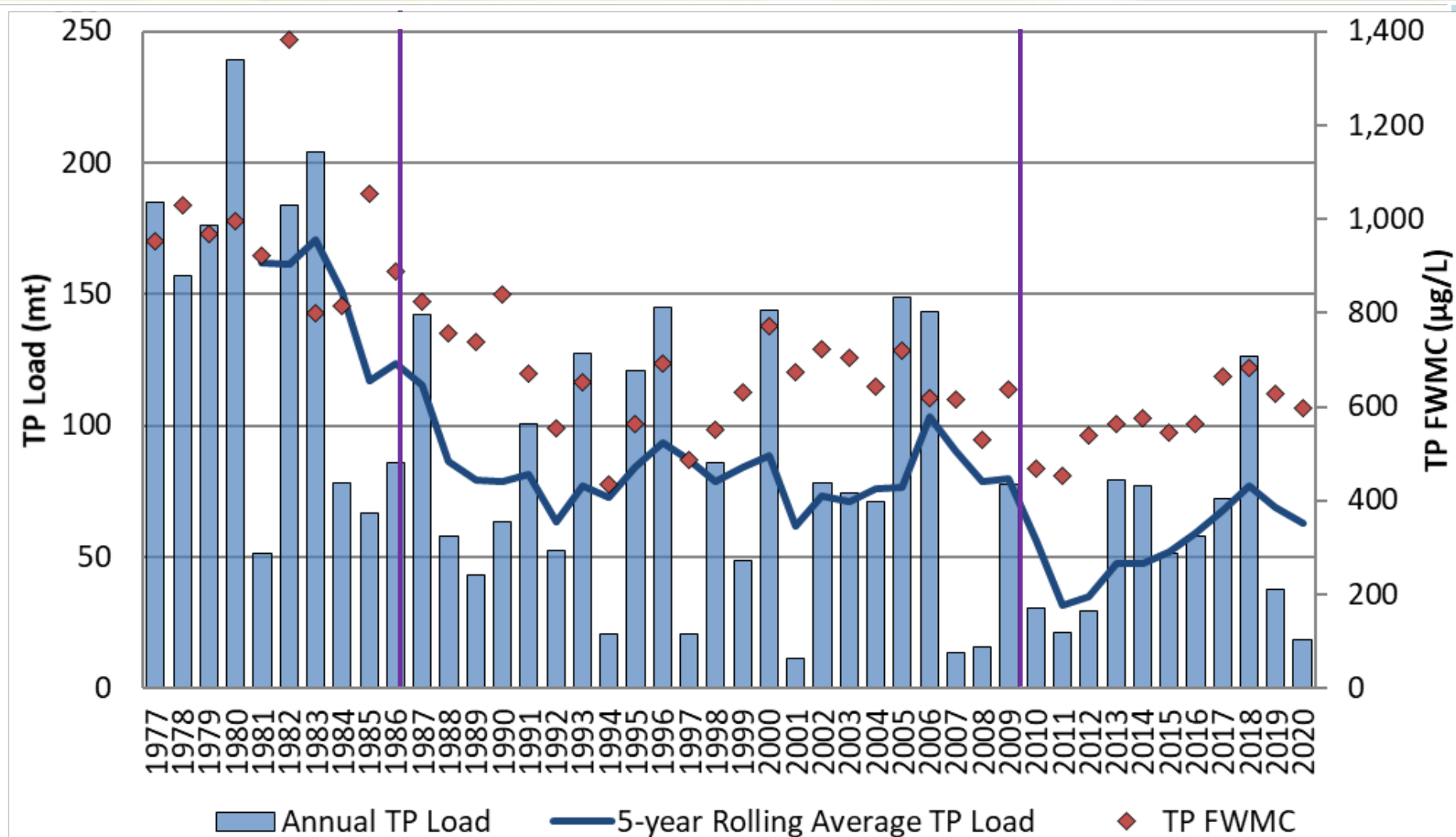
Surface Water Reservoir



Stormwater detention pond



# TCNS S-191 Basin Timeline



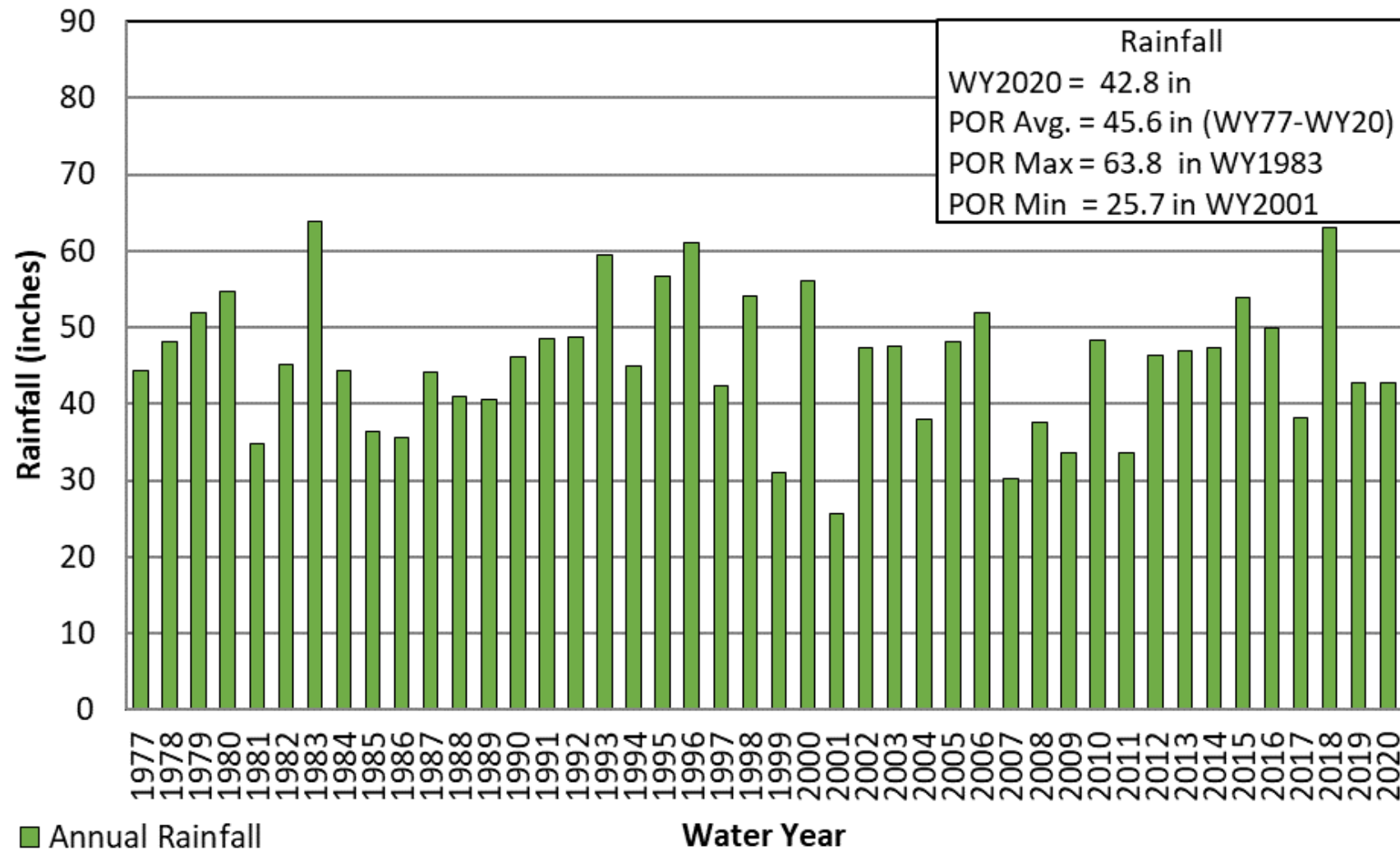
## 1987-2009

- FDER/FDEP Dairy Rule
- Dairy Buyout Program
- Works of District Permits
- SFWMD ERP Program
- FDACS NMP for Dairies
- FDACS BMP Rule
- FDEP Phase II MS4 Permits
- Dairy BATS Projects
- Phosphorus Source Control Grant Program Projects
- Former Dairy Remediation Projects
- FDACS Urban Turf Rule
- Taylor Creek STA
- FDACS Nubbin Slough and Mosquito Creek HWTs

## 2010-2020

- FDACS Grassy Island HWT
- Nubbin Slough STA
- Lakeside Ranch STA

# TCNS S-191 Basin Rainfall





# Continued Engagement and Adaptive Management

- Coordinating Agencies' Holistic Approach
- Report findings in a public workshop for accountability
- Incorporate recommendations into WPPs for BMAP updates



# Another Consideration

- Notify Coordinating Agencies of the need to revise the outdated Interagency Agreement
  - Last revised 2017
  - Does not include the river watersheds





# Chapter 40E-61 Program



- One program under NEEPP
- NEEPP directs SFWMD to amend 40E-61
- House Bill 5003 clarifies direction
- Cost effectiveness must be considered 120.54 (1)(d) F.S.

# Individual Monitoring Requirements

- Objective: To provide for a monitoring program for those not implementing BMPs. The program will require landowners to:
- Submit a Water Quality Monitoring Plan (WQMP) which must be approved by the SFWMD
- Report monitoring data
- Take action if the water quality criteria for the parameters address by the BMAP are not attained, by implementing the appropriate BMP program under FDACS or FDEP



# Approval of Water Quality Monitoring Plan

- Non-point source discharger within the Northern Everglades must obtain approval of their Water Quality Monitoring Plan (WQMP)
- SFWMD will review and approve the plan by way of a letter

## Excerpt Quality I

TAB

Parameter Gr
Nutrients (Tot
pH, specific o
temperature

TABLE 6.2 Sampling

Equipment Type	Cons
Surface Water and Storm	
1. Nansen, Kemmerer, VanDorn	1. Stai Stei
2. American Sigma/SCO automatic samplers	2. N/A tubi

### 6.4 Sampling Procedures - Aqu

All sampling procedures and guideline

Samples are collected following 40 CFI defined later in this section. Collec documented. Unusual conditions will

Based on the sampling capabilities stu is not applicable.

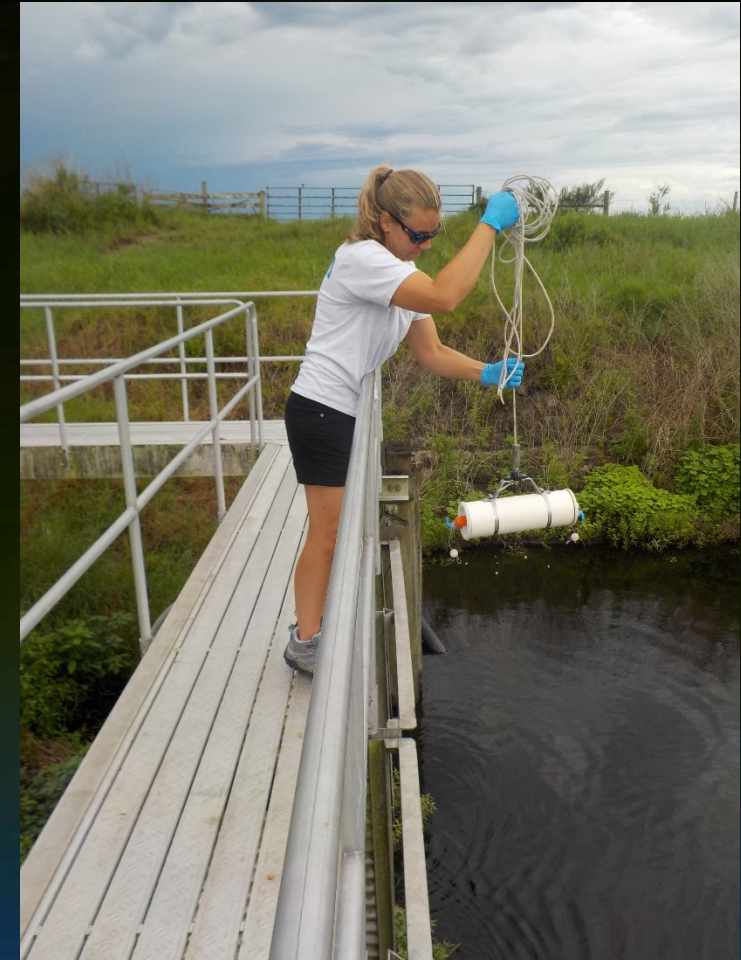


SOUTH FLORIDA WATER MANAGEMENT DISTRICT

APPROVED

# Requirements of WQMP

- Description of the property drainage features
- Proposed methodology to determine attainment of water quality criteria
- Proposed monitoring locations
- Sample methods and frequency
- Must be renewed every 5 years
- Must be modified if significant changes
- New owners must submit a new plan





# When Water Quality Standards are Not Met

If after 3 years monitoring water quality criteria are not met

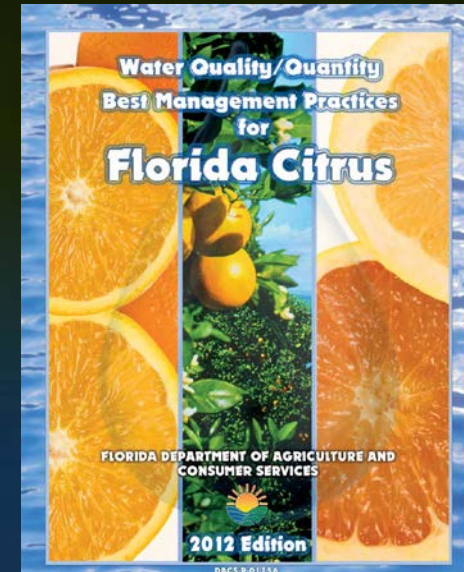
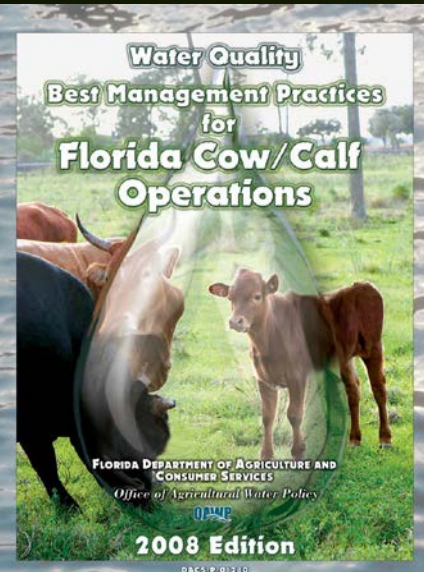
- Non-point source discharger must implement BMPs under FDACS or FDEP programs
- Once BMPs are implemented Water Quality monitoring will no longer be required

## Best Management Practices for South Florida Urban Stormwater Management Systems



April 2002

South Florida Water Management District  
3001 Gun Club Road  
West Palm Beach, FL 33406  
(561) 696-6800  
www.sfwmd.gov



# Revised Rulemaking Timeline

Process	Completed tasks and Current Schedule
Governing Board approval of Notice of Rule Development	Completed - October 2019
Round 1 - Public Workshops in 5 regions: Stuart, Kissimmee, Ft. Myers, Okeechobee, West Palm	Concepts only: Completed - November 2019
Legislative Change	March 2020
Update to Governing Board	Completed - March 2020
Publish Draft Rule Text on website	Completed - April 2020
Round 2 - Zoom Workshops	With Draft Rule Text: Completed May 2020 - June 2020
Update to Governing Board	Completed July 2020
Revise Draft Rule Text	June - October 2020
Round 3 - Zoom Workshop	With revised Draft Rule Text November 2020
Revise Draft Rule Text	December 2020
Governing Board approval Publish Notice of Proposed Rule File Proposed Rule with JAPC	February 2021



# Next Steps

- Public input – comments requested by December 22
- Adjust draft rule text as needed



# SFWMD Rulemaking Web Board

## ➤ Interactive Web Board

- Most recent Draft Rule Text
- Round 1 and 2 Workshop videos
- Status of rule amendments
- Link to request to be added to stakeholder list
- Link to leave a comment

## ➤ Link

- <https://www.sfwmd.gov/doing-business-with-us/rules>





# DBhydro Insights Presentation

# Question & Answer Period

Have a question?

- Please use the Q & A feature using zoom to type in your question so that we respond.





# Public Comment

Want to comment?

- Each speaker will have 3 minutes complete their comment
- Please remember to first state your name and who you are representing for the record.
- Zoom audio/microphone
  - If you're participating via zoom – use the Raise Hand feature
- Phone
  - If you're participating via you phone –
  - \*9 Raises Hand
  - \*6 Mutes/Unmutes your phone

