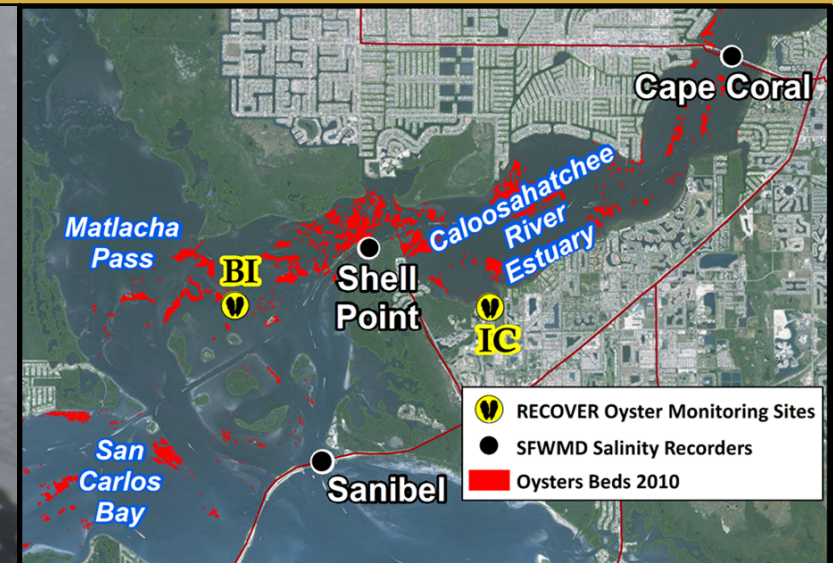
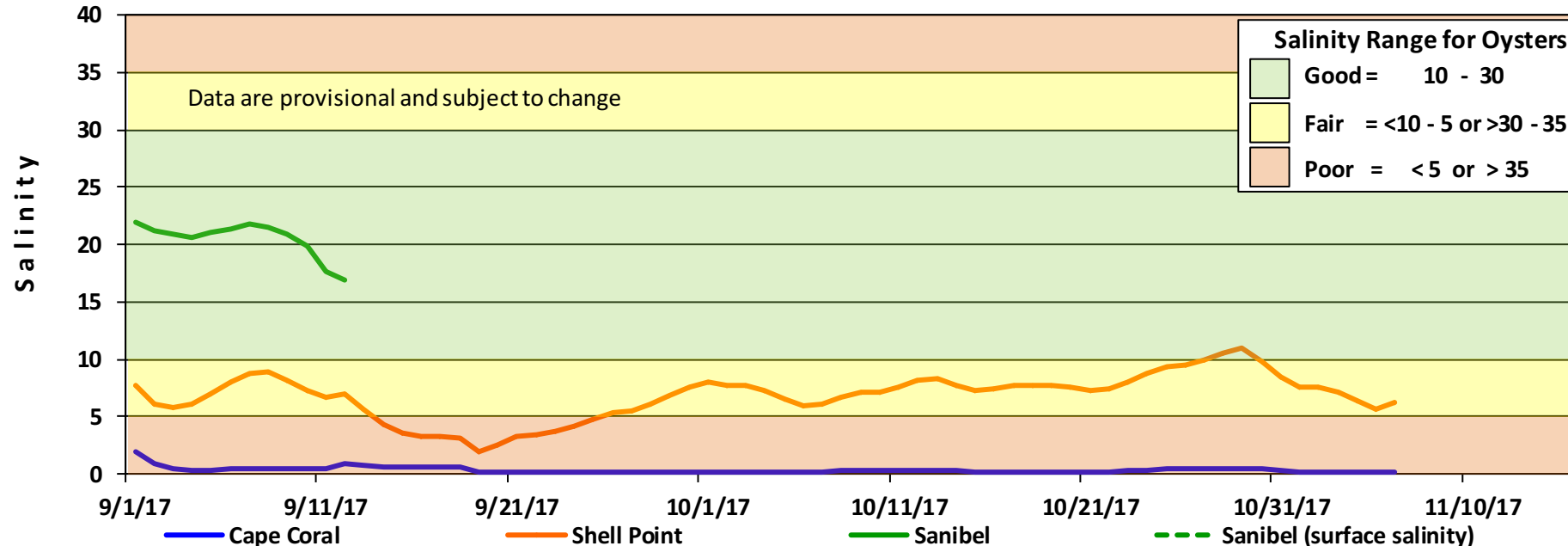


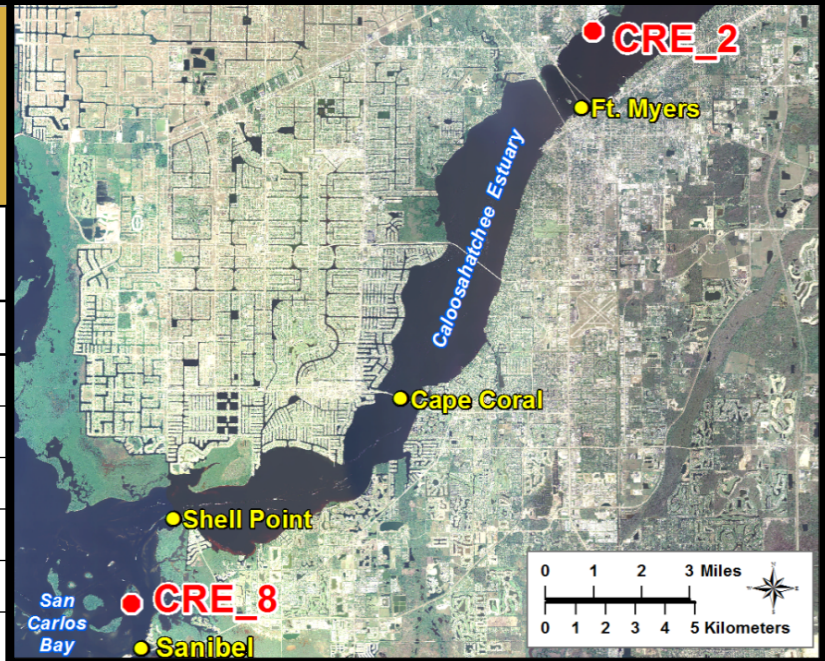
Caloosahatchee Estuary - Oysters



Seven day mean salinity of the water column at 3 monitoring stations in the Caloosahatchee Estuary

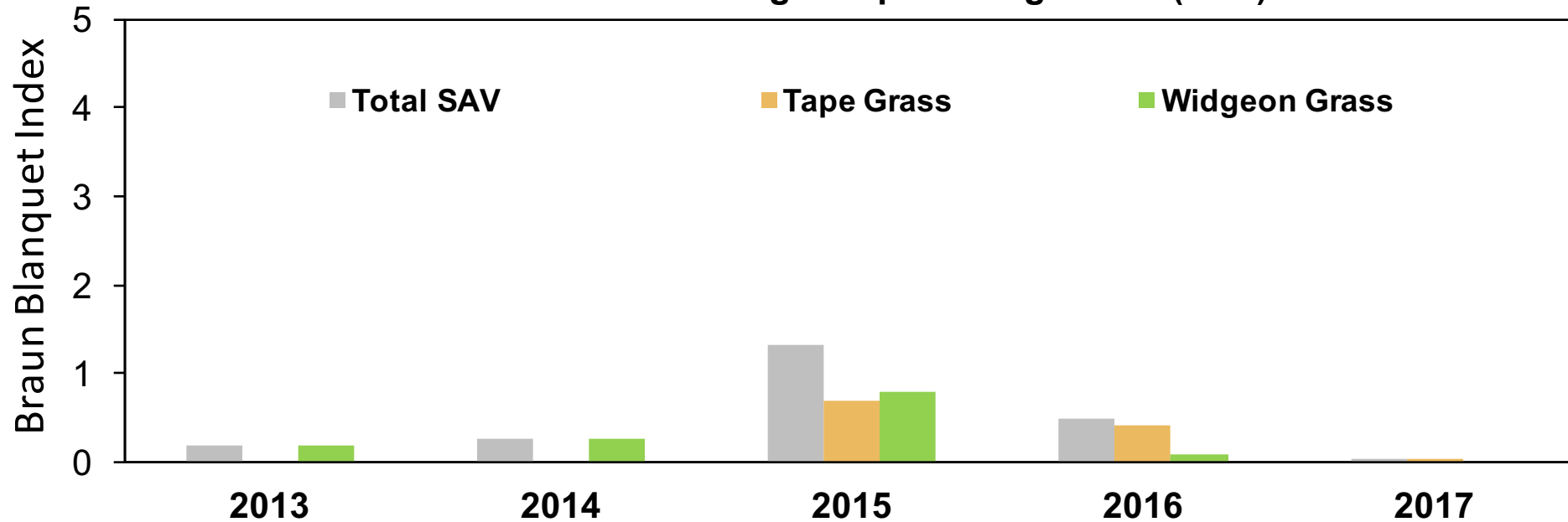


Caloosahatchee Estuary – CRE 2 Submerged Aquatic Vegetation



Braun Blanquet SAV Cover-Abundance Index	
Category	Percent Cover
0	no SAV
1	1 - 5%
2	5 - 25%
3	25 - 50%
4	50 - 75%
5	75 - 100%

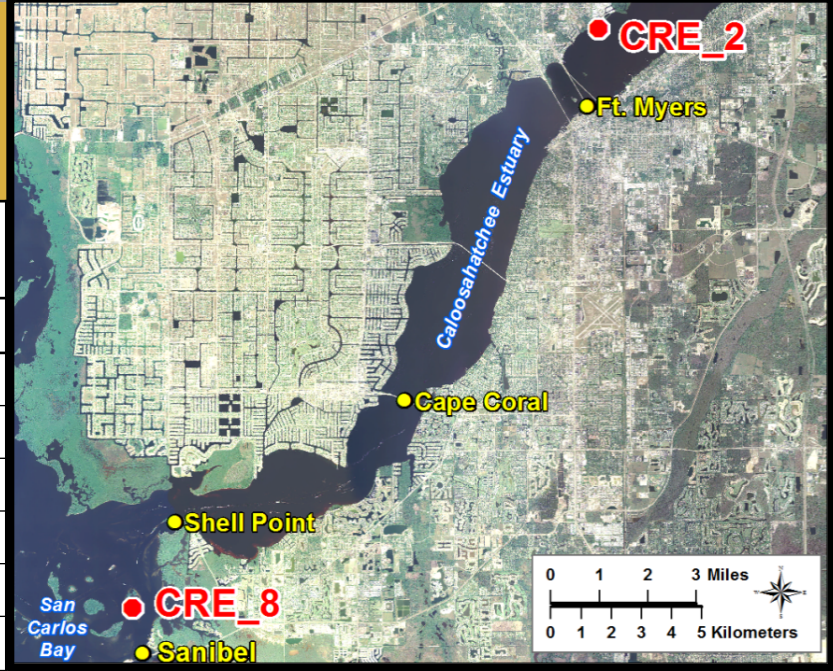
Fall Percent Cover of Submerged Aquatic Vegetation (SAV) at CRE 2



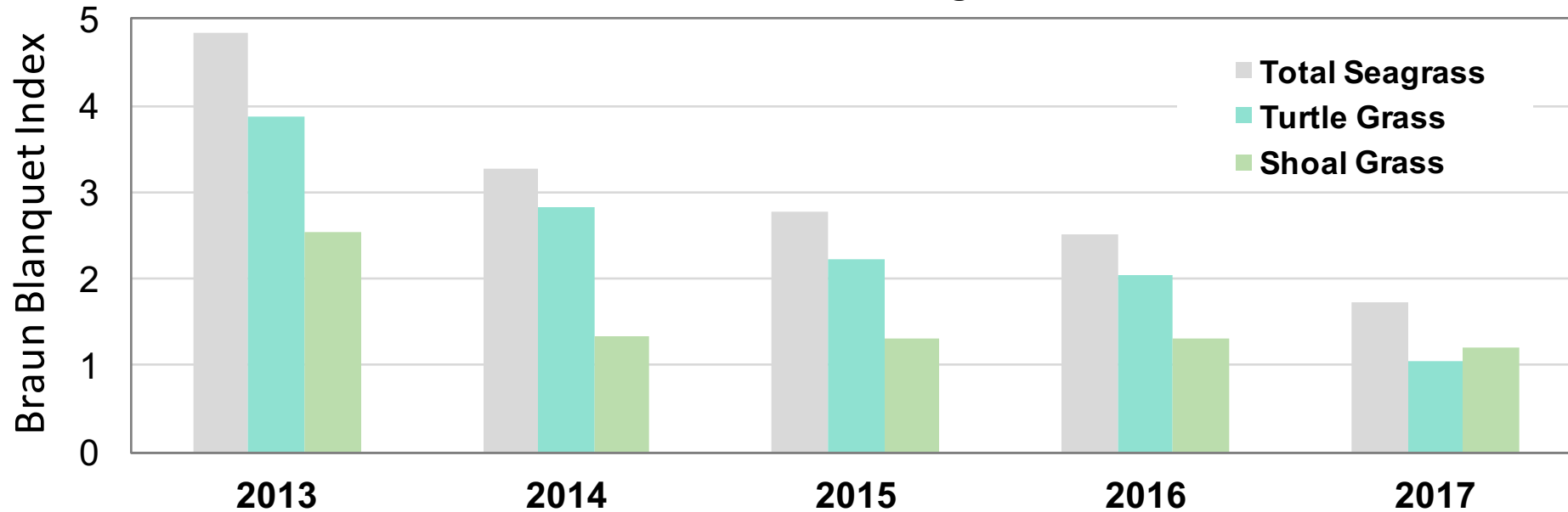
Caloosahatchee Estuary – CRE 8 Seagrass



Braun Blanquet SAV Cover-Abundance Index	
Category	Percent Cover
0	no SAV
1	1 - 5%
2	5 - 25%
3	25 - 50%
4	50 - 75%
5	75 - 100%



Fall Percent Cover of Seagrass at CRE 8



Impacts of Hurricane Irma New Pass in Estero Bay



Coastal
re-sculpting
at New Pass
on Estero Bay



Photographs provided by:
James Douglass, PhD
Assistant Professor,
Florida Gulf Coast University

Caloosahatchee Estuary

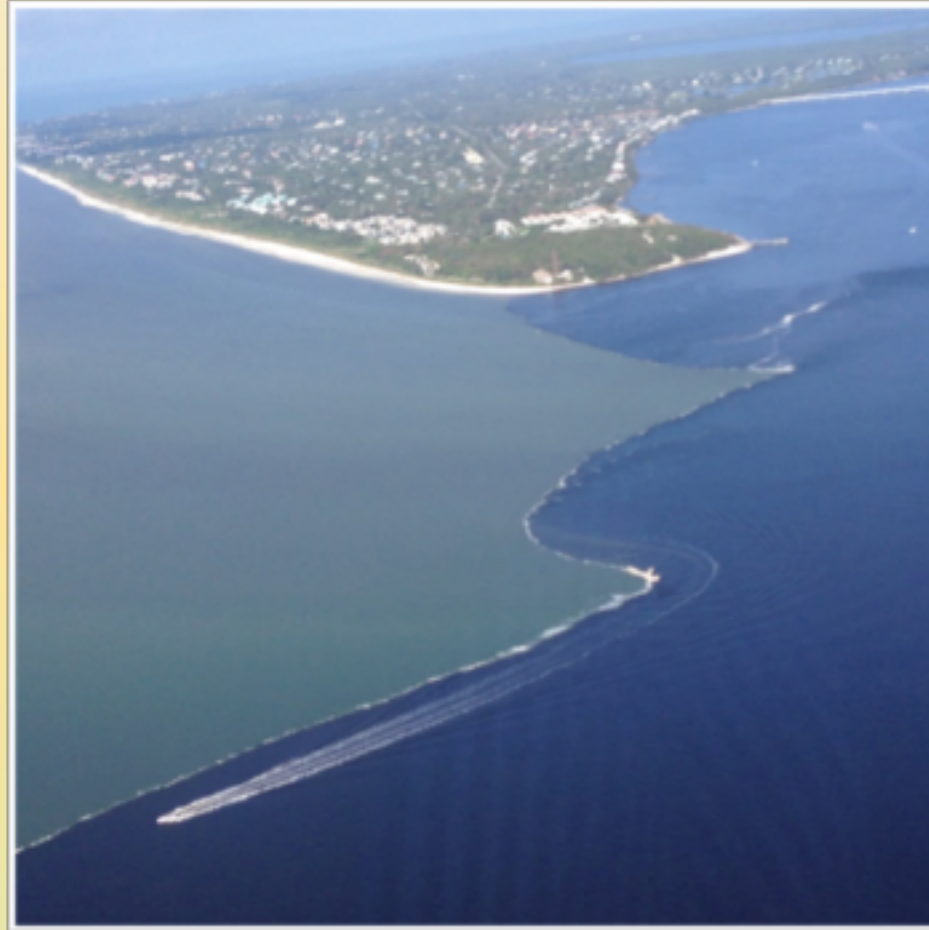
Local Basin Watershed Discharges

(No Lake Okeechobee Releases)

Ft. Myers Beach



Sanibel Island



Photographs taken September 18, 2017