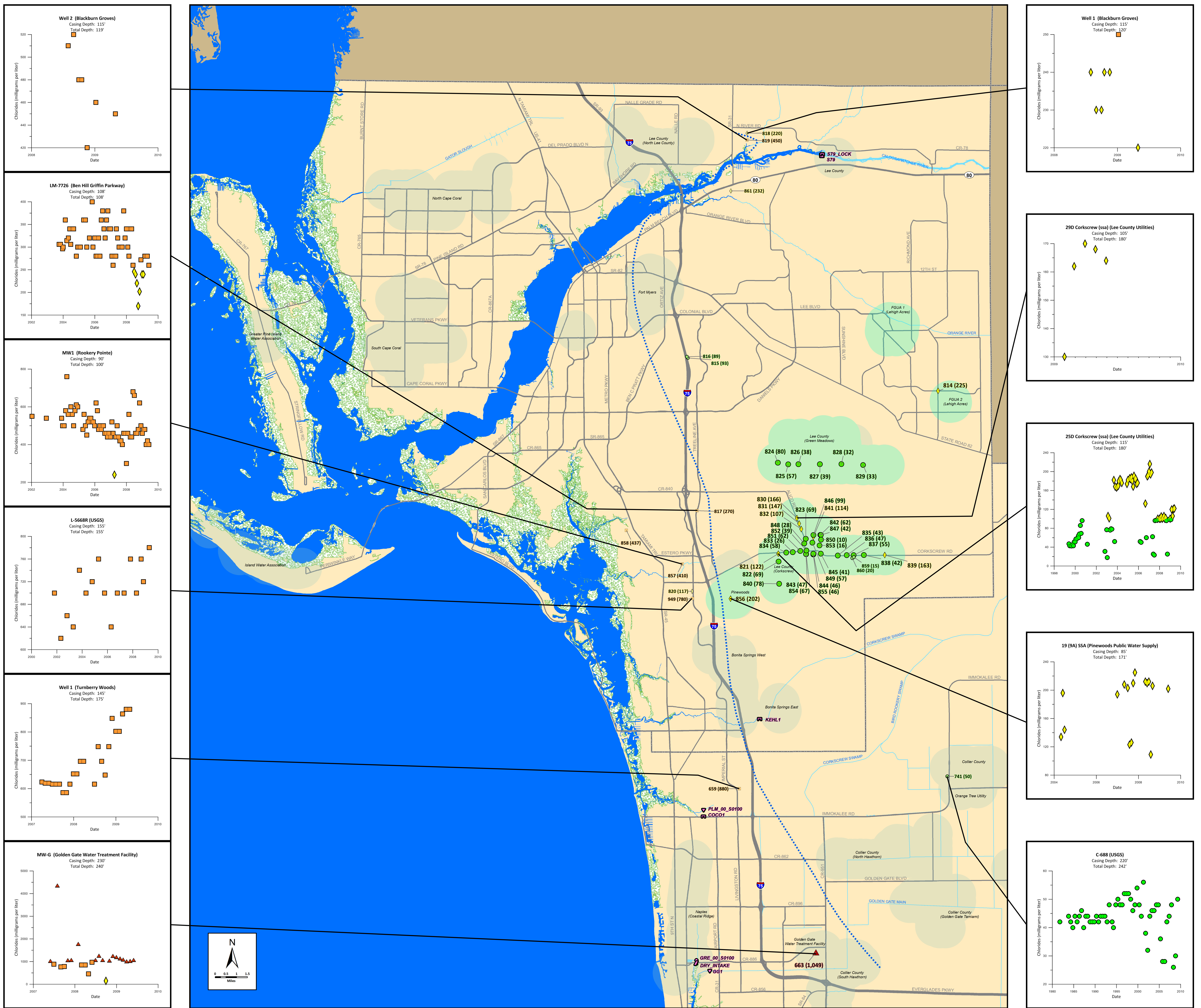


# Lee and Collier Counties

## Estimated Position of the Saltwater Interface

### Sandstone Aquifer

#### April/May 2009



Map Number	SFWMD Facility ID	Project Name	Well Name	X	Y	Casing Depth (feet bbl)	Total Depth (feet bbl)	Average Chloride (mg/L)
6581	149449	GATOR SLOUGH PHASES I - V	M-285	482802	803151	100	140	19
6591	155169	TURNBERRY WOODS	Well 1	409927	712429	145	175	80
6601	149454	GATOR SLOUGH PHASES I - V	M-286	482801	803151	180	200	33
6621	31795	HIGHLANDS CITRUS GROVE	11-12	486096	786081	200	255	70
6627	31803	HIGHLANDS CITRUS GROVE	13-17	503138	778399	218	250	39
663	309596	GOLDEN GATE WATER TREATMENT FACILITY	MW-G	428604	672116	250	240	1,049
6641	31296	GATOR SLOUGH PHASES I - V	12-1	502158	786685	232	269	93
741	NA	USGS 261802081354801	C-688	460782	715483	220	242	50
814	151463	LEHIGH ACRES UTILITIES	L-1963	411655	810962	68	74	225
815*	195710	ARBORWOOD PARCEL A (BOTANICA LAKES)	SS-1	396815	818600	80	120	93
816*	195711	ARBORWOOD PARCEL A (BOTANICA LAKES)	SS-2	396600	818955	80	120	89
817*	142771	BEN HILL GRIFFIN PARKWAY	LM-7726	399128	780993	108	108	270
818*	4859	BLACKBURN GROVES	Well 1	411655	810962	115	120	220
819*	4860	BLACKBURN GROVES	Well 2	411442	872383	115	119	450
820*	114650	COLONIAL OAKS	PW-1	397900	761100	90	120	117
821	26834	LEE COUNTY UTILITIES PUBLIC WATER SUPPLY	250 Corkscrew	419135	770391	115	180	122
822	26835	LEE COUNTY UTILITIES PUBLIC WATER SUPPLY	260 Corkscrew	419139	768439	120	170	68
823	29785	LEE COUNTY UTILITIES PUBLIC WATER SUPPLY	1 Corkscrew	425886	774068	132	243	69
824	31366	LEE COUNTY UTILITIES PUBLIC WATER SUPPLY	GM-1	418993	792831	95	160	80
825	31369	LEE COUNTY UTILITIES PUBLIC WATER SUPPLY	GM-4	421574	792417	104	185	57
826	31370	LEE COUNTY UTILITIES PUBLIC WATER SUPPLY	GM-5	424083	792457	104	185	38
827	31372	LEE COUNTY UTILITIES PUBLIC WATER SUPPLY	GM-7	429355	792472	90	235	39

Map Number	SFWMD Facility ID	Project Name	Well Name	X	Y	Casing Depth (feet bbl)	Total Depth (feet bbl)	Average Chloride (mg/L)
828	31373	LEE COUNTY UTILITIES PUBLIC WATER SUPPLY	GM-9	434670	792505	91	120	32
829	31399	LEE COUNTY UTILITIES PUBLIC WATER SUPPLY	GM-11	440941	792345	115	165	33
830	128364	LEE COUNTY UTILITIES PUBLIC WATER SUPPLY	290 Corkscrew	423714	779380	105	180	166
831	128366	LEE COUNTY UTILITIES PUBLIC WATER SUPPLY	300 Corkscrew	424254	777828	132	169	147
832	128740	LEE COUNTY UTILITIES PUBLIC WATER SUPPLY	310 Corkscrew	424793	776476	115	200	107
833	128742	LEE COUNTY UTILITIES PUBLIC WATER SUPPLY	320 Corkscrew	423661	770760	179	252	26
834	128756	LEE COUNTY UTILITIES PUBLIC WATER SUPPLY	330 Corkscrew	421090	770677	130	238	58
835	129342	LEE COUNTY UTILITIES PUBLIC WATER SUPPLY	340 Corkscrew	433789	769953	260	360	43
836	129343	LEE COUNTY UTILITIES PUBLIC WATER SUPPLY	350 Corkscrew	424793	776476	210	301	47
837	129344	LEE COUNTY UTILITIES PUBLIC WATER SUPPLY	360 Corkscrew	431700	770638	179	260	55
838	129345	LEE COUNTY UTILITIES PUBLIC WATER SUPPLY	370 Corkscrew	440210	770652	146	200	42
839	129347	LEE COUNTY UTILITIES PUBLIC WATER SUPPLY	390 Corkscrew	445390	770048	146	200	163
840	131174	LEE COUNTY UTILITIES PUBLIC WATER SUPPLY	280 Corkscrew	419355	762861	180	300	78
841	131175	LEE COUNTY UTILITIES PUBLIC WATER SUPPLY	2 Corkscrew	427779	774542	209	213	114
842	131176	LEE COUNTY UTILITIES PUBLIC WATER SUPPLY	3 Corkscrew	429490	775012	209	227	62
843	131177	LEE COUNTY UTILITIES PUBLIC WATER SUPPLY	4 Corkscrew	425952	770294	209	214	47
844	131178	LEE COUNTY UTILITIES PUBLIC WATER SUPPLY	5 Corkscrew	427750	770261	209	235	46
845	131179	LEE COUNTY UTILITIES PUBLIC WATER SUPPLY	6 Corkscrew	429595	770066	214	249	41
846	136892	LEE COUNTY UTILITIES PUBLIC WATER SUPPLY	LCU-II Corkscrew Observation Well All	427787	774974	160	210	99
847	136898	LEE COUNTY UTILITIES PUBLIC WATER SUPPLY	LCU-II Corkscrew Observation Well B-II	429632	775018	195	284	42

Map Number	SFWMD Facility ID	Project Name	Well Name	X	Y	Casing Depth (feet bbl)	Total Depth (feet bbl)	Average Chloride (mg/L)
848	136900	LEE COUNTY UTILITIES PUBLIC WATER SUPPLY	LCU-II Corkscrew Observation Well B-I	425517	772894	180	230	28
849	136915	LEE COUNTY UTILITIES PUBLIC WATER SUPPLY	LCU-II Corkscrew Observation Well I-II	427538	773114	170	200	57
850	136943	LEE COUNTY UTILITIES PUBLIC WATER SUPPLY	LCU-II Corkscrew Observation Well I-II	429661	773846	220	250	10
851	136945	LEE COUNTY UTILITIES PUBLIC WATER SUPPLY	LCU-II Corkscrew Observation Well G-II	424551	771064	200	260	62
852	136947	LEE COUNTY UTILITIES PUBLIC WATER SUPPLY	LCU-II Corkscrew Observation Well H-II	426059	771166	200	264	39
853	136948	LEE COUNTY UTILITIES PUBLIC WATER SUPPLY	LCU-II Corkscrew Observation Well I-II	429310	772411	225	290	16
854	136951	LEE COUNTY UTILITIES PUBLIC WATER SUPPLY	LCU-II Corkscrew Observation Well H-II	425971	770273	195	285	67
855	136953	LEE COUNTY UTILITIES PUBLIC WATER SUPPLY	LCU-II Corkscrew Observation Well M-II	427758	770200	220	294	46
856	13599	PINEWOODS PUBLIC WATER SUPPLY	19 (BA) SSA	407368	759307	85	171	202
857*	103473	ROOKERY POINT	MW1	395459	767828	90	100	430
858*	114400	SHADOW WOOD PRESERVE	PW-4	381661	776144	120	160	437
859*	108265	THE RETREAT	1	437733	765298	184	264	15
860*	108266	THE RETREAT	3	437973	765291	184	264	20
861*	122117	THE VERANDAH	17	407456	859837	90	110	232
849	NA	USGS 262513081472002	L-5668R	397948	759336	155	155	780

NA = Not Applicable  
 \* These wells may have less analytical precision.

**Structures**

- Culvert
- Lock
- Pump
- Spillway
- Weir

**PWS† Chlorides**

- ≤100 mg/L
- 101 - 250 mg/L
- 251 - 1,000 mg/L
- >1,000 mg/L

**Wells**

- 433 (3900) Map Number (chloride)

**Non-PWS† Chlorides**

- ≤100 mg/L
- 101 - 250 mg/L
- 251 - 1,000 mg/L
- >1,000 mg/L

† PWS = Public Water Supply

**Wellfields in the Sandstone Aquifer**

- Wellfields in the Sandstone Aquifer
- Wellfields in Other Aquifers
- Saline Water Bodies
- Freshwater Bodies
- Mangrove and Salt Marsh
- Roads
- Estimated 250 mg/L isochores, 2009 (updated)

Well and chloride information was obtained from USGS and SFWMD records. Chloride values are given in milligrams per liter (mg/L). Map data represent the average of available chloride values for the period of April/May 2009. Graphs of selected wells represent the period of record for each well through May 2009. The dashed isochores mark an approximation of the farthest inland extent of the saltwater interface as defined by the 250 mg/L chloride concentration. The 2009 isochores was updated in 2014/2015 to incorporate new and corrected data.



Hydrogeology Unit

**DISCLAIMER:**  
 This map is a conceptual tool utilized for project development and implementation only. This map is not self-executing or binding, and does not otherwise affect the interests of any person including any vested rights or existing uses of real property. Any information, including but not limited to maps and data, received from the SFWMD is provided "as is" without any warranty, and the SFWMD expressly disclaims all express and implied warranties of merchantability and fitness for a particular purpose. The District does not make any representations regarding the use, or the results of the use, of the information provided to you by the District.

Prepared By: Resource Evaluation - addod  
 Rev. September 2015  
 LeeCollier\_SSA\_Isochlore\_2009.pdf