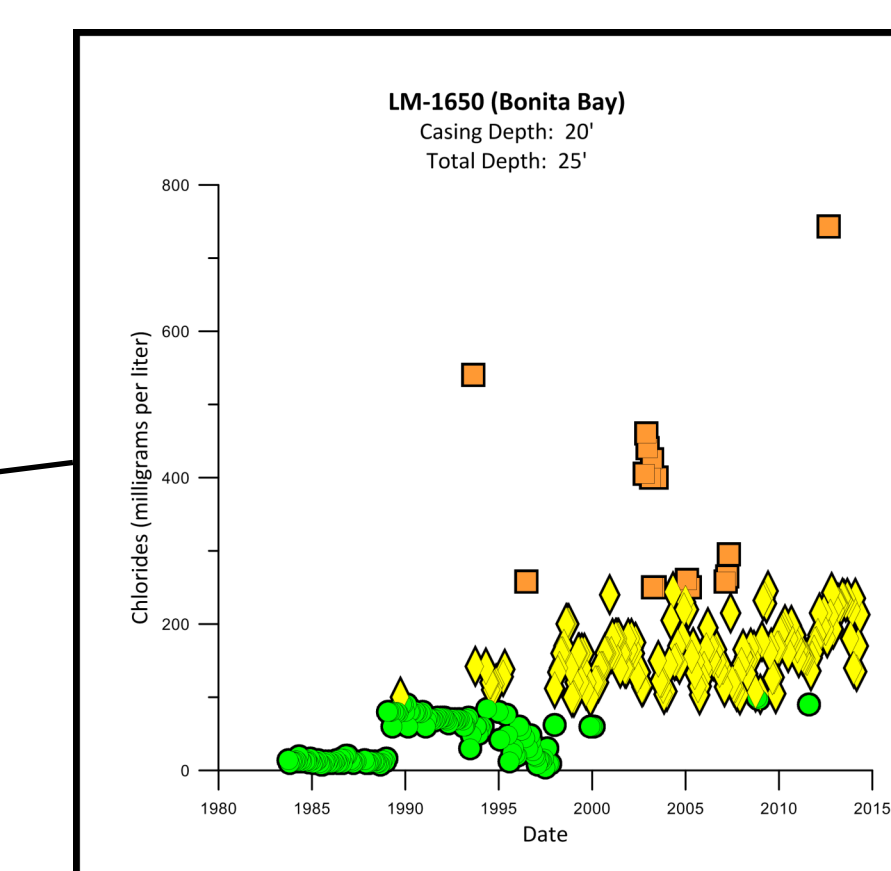
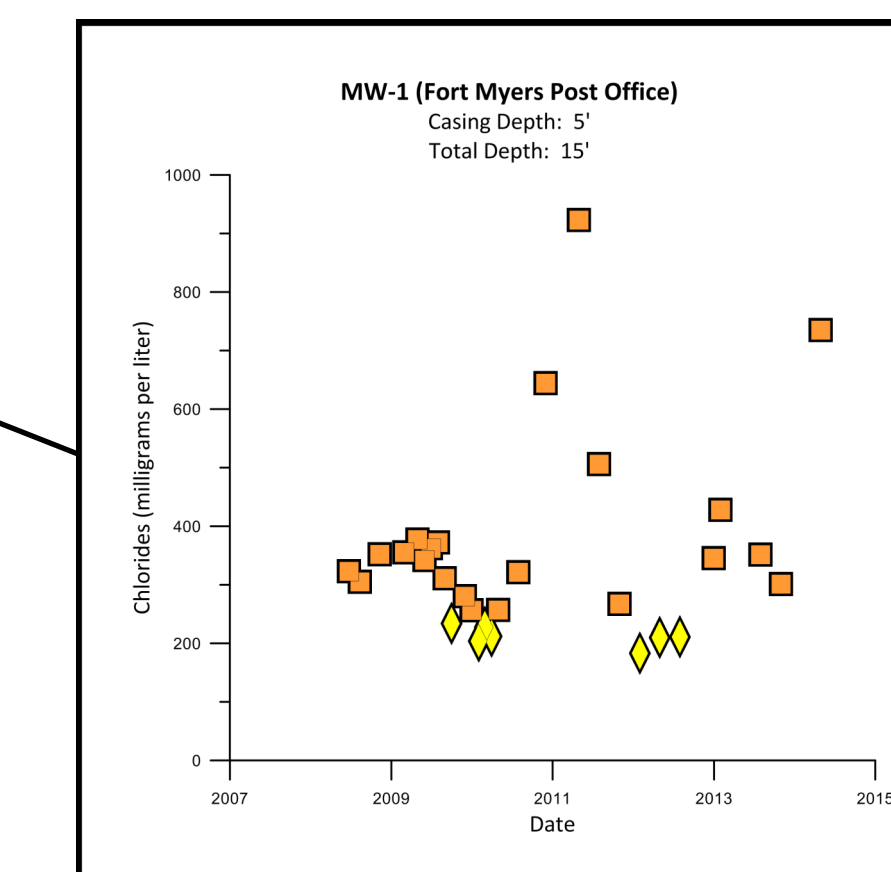
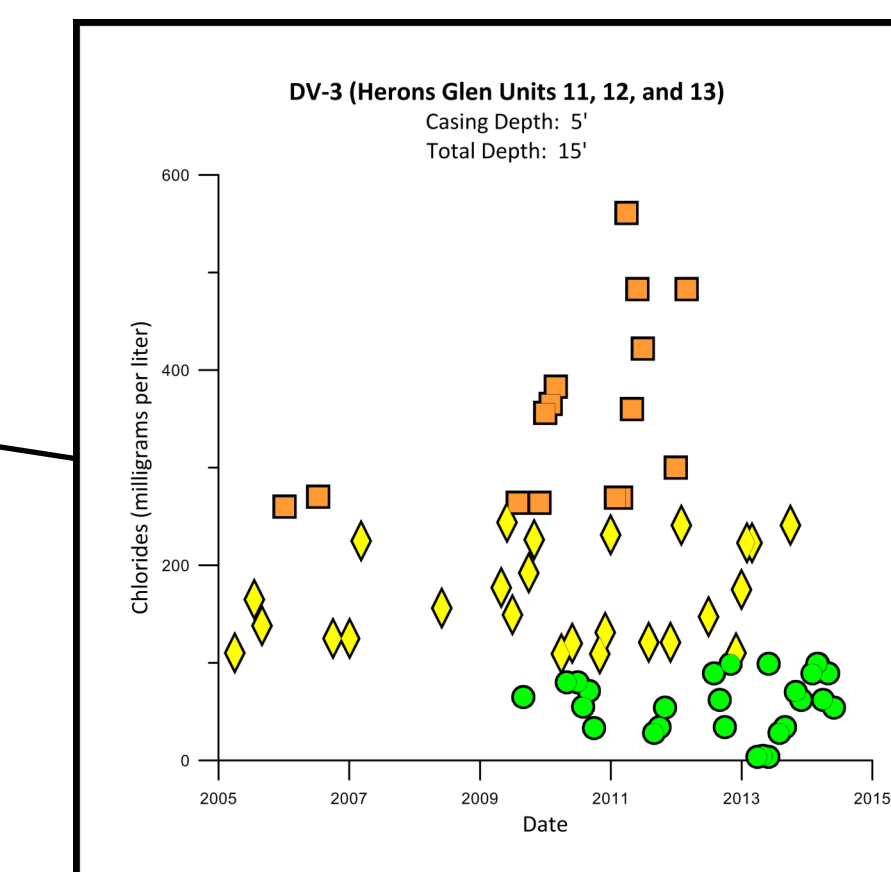
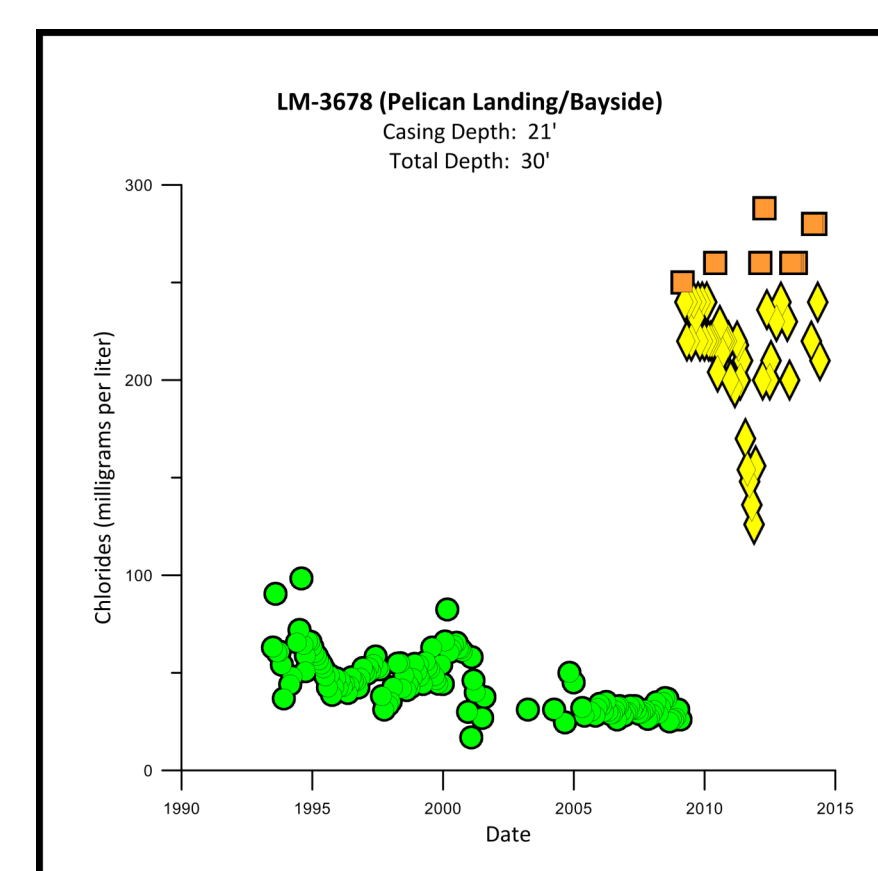
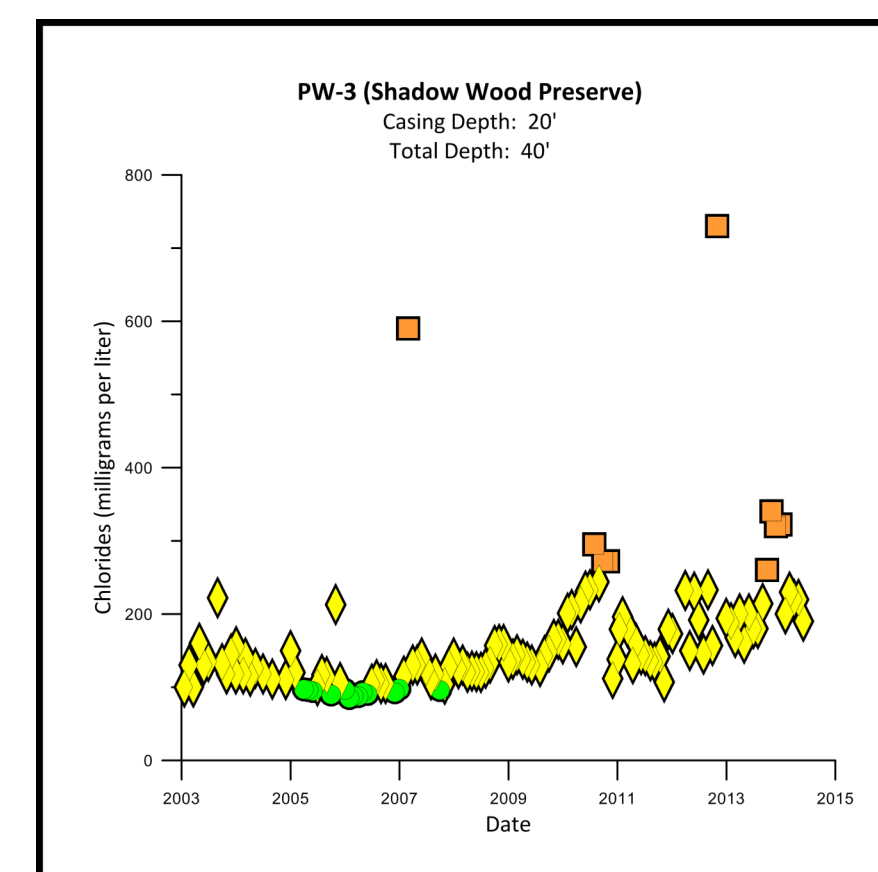
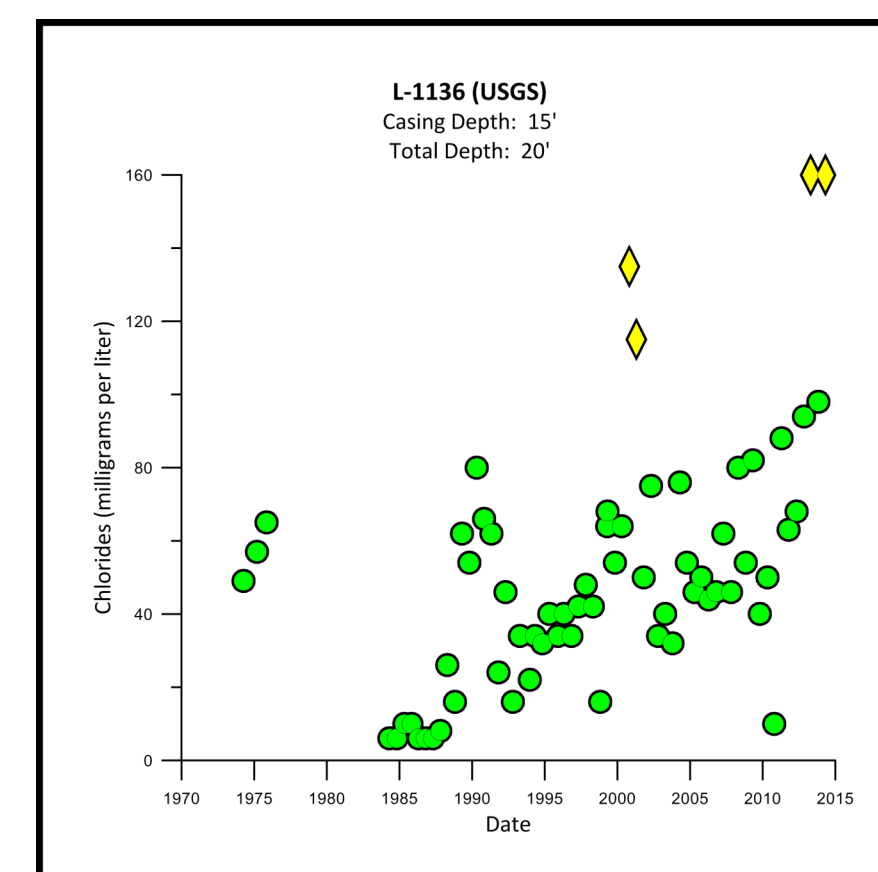


Lee County Estimated Position of the Saltwater Interface Water Table Aquifer March/April/May 2014



Map Number	SFWMD Facility ID	Project Name	Well Name	X	Y	Casing Depth (feet bbs)	Total Depth (feet bbs)	Average Chloride (mg/l)
263	NA	USGS 26352061592202	L-1136	332950	822316	15	20	160
281	13.610	PINEWOODS PUBLIC WATER SUPPLY	10 (WTA) (NF-10)	406603	759335	18	30	90
282	13.608	PINEWOODS PUBLIC WATER SUPPLY	9 (WTA)	407909	759299	20	30	78
283	13.607	PINEWOODS PUBLIC WATER SUPPLY	7 (WTA)	408807	759127	19	39	38
286	13.602	PINEWOODS PUBLIC WATER SUPPLY	2 (WTA) (NF-2)	409105	761380	19	40	116
287	13.601	PINEWOODS PUBLIC WATER SUPPLY	1 (WTA) (NF-1)	409134	761380	16	31	146
288	13.606	PINEWOODS PUBLIC WATER SUPPLY	6 (WTA) (NF-6)	409135	759993	23	32	36
290	13.605	PINEWOODS PUBLIC WATER SUPPLY	5 (WTA) (NF-5)	409150	760049	20	42	74
291	13.604	PINEWOODS PUBLIC WATER SUPPLY	4 (WTA) (NF-4)	409194	760452	19	39	88
296	31.354	LEE COUNTY UTILITIES	GM-10 (wta)	419055	792820	20	38	30
305	31.357	LEE COUNTY UTILITIES	GM-38 (wta)	419801	792841	23	42	22
306	31.356	LEE COUNTY UTILITIES	GM-3A (wta)	419813	792324	23	42	17
307	31.355	LEE COUNTY UTILITIES	GM-2A (wta)	419825	792427	20	36	25
308	31.358	LEE COUNTY UTILITIES	GM-4A (wta)	421542	792377	20	49	36
318	31.359	LEE COUNTY UTILITIES	GM-5A (wta)	424050	792436	20	24	18
333	31.360	LEE COUNTY UTILITIES	GM-6A (wta)	426824	792479	18	40	16
345	31.361	LEE COUNTY UTILITIES	GM-7A (wta)	429332	792454	18	36	16
353	31.400	LEE COUNTY UTILITIES	GM-8A (wta)	434646	792462	20	42	19
357	31.363	LEE COUNTY UTILITIES	GM-10A (wta)	437354	792430	18	42	20
361	31.364	LEE COUNTY UTILITIES	GM-11A (wta)	440015	792300	23	60	27
367	31.365	LEE COUNTY UTILITIES	GM-12A (wta)	442697	792199	21	40	47
856*	NA	DBHYDRO	L-1575_G	424868	872934	5	15	12
857*	NA	DBHYDRO	L-721_G	316766	860925	9	18	10
1017*	3.242	R & B FARMS	W1	285686	855474	40	60	66
1024*	26.903	LEGENDS GOLF AND COUNTRY CLUB	WTA-1	390803	799610	15	35	163
1025*	26.904	LEGENDS GOLF AND COUNTRY CLUB	WTA-2	390750	799035	15	35	131
1026*	26.905	LEGENDS GOLF AND COUNTRY CLUB	WTA-3	391120	798415	15	35	133
1036*	30.941	BONITA BAY - ADD WELL BW-9	W1-1688	392881	794632	19	33	89
1037*	30.942	BONITA BAY - ADD WELL BW-9	W2-LM-1241	393042	794207	23	30	164
1041*	32.582	BONITA BAY - ADD WELL BW-9	BW-2	393210	791458	23	35	303
1042*	32.612	BONITA BAY - ADD WELL BW-9	BW-1	393433	791471	23	35	261
1047*	124.388	SHADOW WOOD PRESERVE	PW-3	351651	776089	20	40	210
1049*	114.406	SHADOW WOOD PRESERVE	MW-1	381560	777896	32	37	228
1050*	114.407	SHADOW WOOD PRESERVE	MW-2	381924	777292	32	37	88
1062*	140.788	BONITA BAY - ADD WELL BW-9	LM-1550	392648	792811	20	25	192
1066*	141.452	DEAN PROPERTY	MW-7	381100	851654	40	50	625
1067*	141.491	BAYSIDE	LM-3410	390256	747225	21	32	235
1068*	141.492	BAYSIDE	LM-3678	390263	745808	21	30	243
1069*	141.493	BAYSIDE	LM-3991	390716	750064	20	30	190
1070*	141.494	BAYSIDE	LM-3997	390253	748114	20	30	264
1071*	141.496	BAYSIDE	LM-3679	390798	745033	18	29	207
1072*	141.497	BAYSIDE	LM-3500	390667	750954	22	30	150
1073*	141.555	SPRING CREEK AT PELICAN LANDING IRRIGATION	LM-01A	391271	742556	11	21	253
1074*	141.556	SPRING CREEK AT PELICAN LANDING IRRIGATION	LM-4015	391482	741939	9	19	115
1076*	142.772	BEN HILL GRIFFIN PARKWAY	LM-7725	402660	770950	15	25	74
1078*	147.101	OVERTON WELLS NUMBER 2 AND NUMBER 3	MW-1	289262	843684	45	60	500
1079*	147.707	TCCT-101	SW1	428887	847765	59	53	32
1080*	147.709	TCCT-101	SW2	288640	847765	65	50	100
1081*	147.722	GREENPLANET LANDSCAPE NURSERY	MW1	281559	853645	55	60	16,000
1082*	151.658	HERONS GLEN	DV-3	353815	866591	6	16	287
1083*	151.659	HERONS GLEN	DV-2	353805	864691	3	13	403
1084*	151.660	HERONS GLEN	DV-1	353815	864739	5	15	83
1087*	174.206	PEACE AND PLENTY PALMS (FKA BLIND HOG GROVES)	2	284768	843069	49	50	100
1088*	175.717	HYATT GOLF RESORT	MW-1	382907	751812	10	20	400
1089*	175.718	HYATT GOLF RESORT	MW-2	383134	755179	10	20	49
1090*	175.719	HYATT GOLF RESORT	MW-3	383264	754237	10	20	44
1091*	191.590	HYATT GOLF RESORT	MW-4	383150	751591	10	20	36
1095*	190.218	WEST BAY GOLF CLUB	MW-1	381984	762176	8	33	288
1096*	190.221	WEST BAY GOLF CLUB	MW-5	384434	757766	1	11	159
1097*	190.222	WEST BAY GOLF CLUB	MW-4	382682	758845	3	13	205
1098*	190.226	WEST BAY GOLF CLUB	MW-6	383246	757266	3	13	339
1102*	191.301	PELICAN PRESERVE (LANDSCAPE)	WT-MW	399963	822360	2	10	54
1103*	191.781	DEAN WISH FARMS	SW1	289359	851788	47	52	40
1104*	191.782	DEAN WISH FARMS	SW2	289760	851822	15	20	43
1105*	191.783	DEAN WISH FARMS	SW3	289836	854023	30	35	934
1109*	191.800	WEST BAY MASTER ASSOCIATION	JB-1	382147	760905	10	35	149
1119*	213.382	THE VERANDAH	MWWT-3	411800	861580	2	10	66
1120*	213.384	THE VERANDAH	MWWT-2	411150	861900	2	10	94
1121*	213.385	THE VERANDAH	MWWT-1	411500	861150	2	10	145
1122*	220.004	FORT MYERS POST OFFICE	MW-1	375671	825256	5	15	735
1123*	224.081	LUPICK FARMS	Monitor Well 1	362747	795121	5	10	180
1127*	253.811	STONEBROOK COMMUNITY DEVELOPMENT DISTRICT	MW-1	406721	761108	10	15	134
1131*	260.275	DEAN WISH FARMS	MW1	288425	851605	50	60	6

NA = Not Applicable
 * These wells were sampled outside of the March/April/May time frame.
 † These wells may have less analytical precision.

Structures	PWS† Chlorides	Non-PWS† Chlorides	Wellfields in the Water Table Aquifer	Estimated 250 mg/L isochlor, 2009 (updated)
Culvert	<=100 mg/L	<=100 mg/L	Wellfields in Other Aquifers	Estimated 250 mg/L isochlor, 2014
Lock	101 - 250 mg/L	101 - 250 mg/L	Saline Water Bodies	Cape Coral Coastal Weirs
Pump	251 - 1,000 mg/L	251 - 1,000 mg/L	Freshwater Bodies	Cape Coral Freshwater Canals
Spillway	>1,000 mg/L	>1,000 mg/L	Mangrove and Saltwater Marsh	Cape Coral Saltwater Canals
Weir	Wells		Roads	
	433 (3900)			
	Map Number (chloride)			

† PWS = Public Water Supply

Well and chloride information was obtained from USGS and SFWMD records. Chloride values are given in milligrams per liter (mg/L). Map data represent the average of available chloride values for the period of March/April/May 2014. The dashed isochlor lines mark an approximation of the farthest inland extent of the saltwater interface as defined by the 250 mg/L chloride concentration in groundwater and/or the farthest inland extent of saline surface water. The dashed red line corresponds to 2014 data, and the dashed blue line corresponds to 2009 data (updated in 2014/2015 to incorporate new and corrected data, as well as a better understanding of the saline surface water).