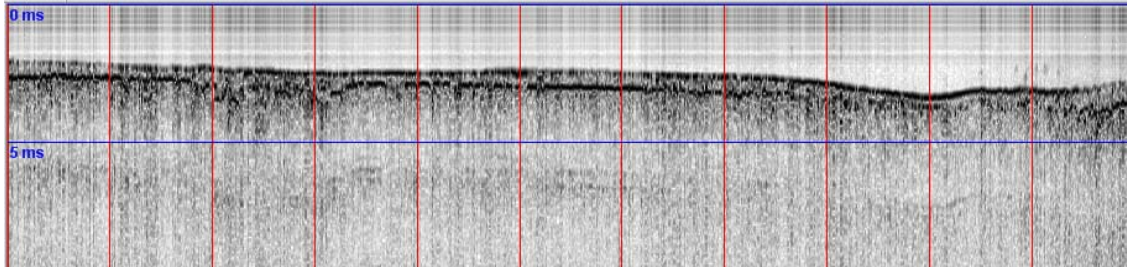


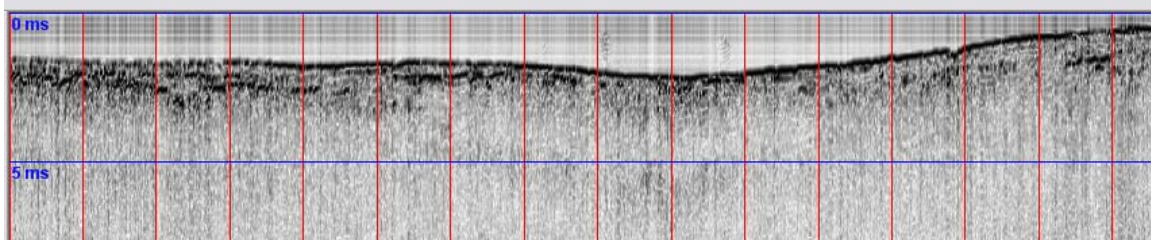
Appendix II: CHIRP Profiles

Seismic CHIRP profiles. Position, orientation, and direction of the tracks are shown in Figures 10-15. The first distance range within the parentheses notes the location along the track; the second value represents the distance spacing between the red vertical lines. If a spacing value is not noted, the distance between red vertical lines is 50 m. Vertical axis is in milliseconds (ms). Seismic signals travel at ~ 1500 m / s. Consequently signals travel ~ 1.5 m in 1 ms.

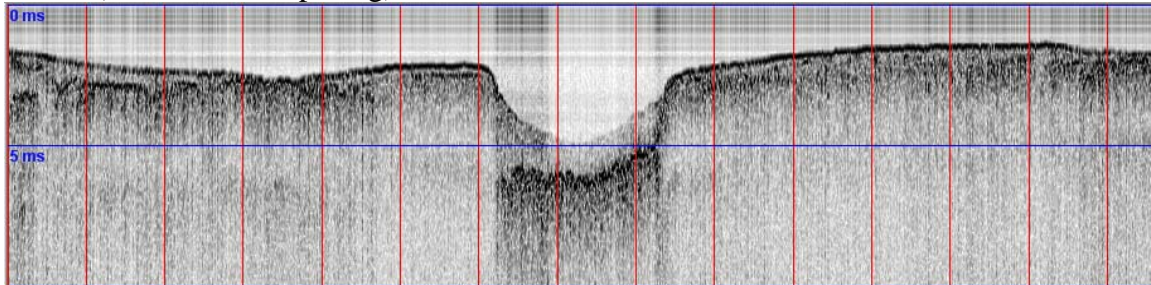
Line 1 (0-275m; 25m spacing)



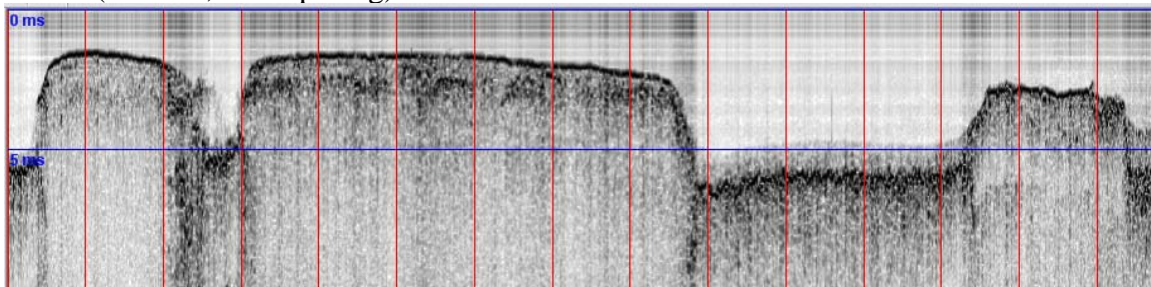
Line 2 (0-150m; 10m spacing)



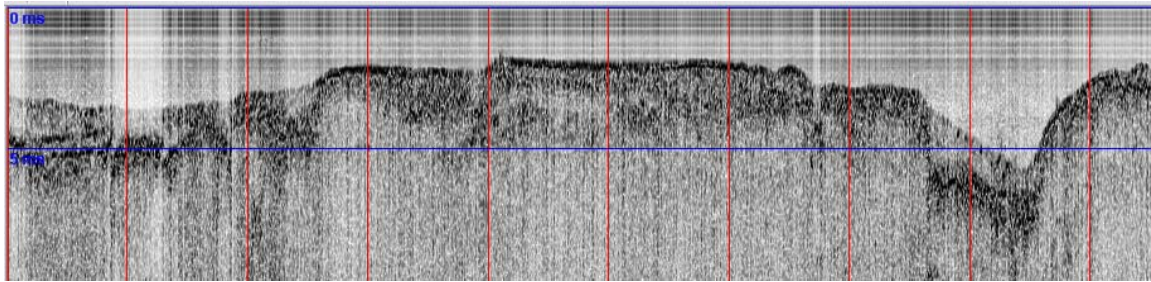
Line 3 (0-350m; 25m spacing)



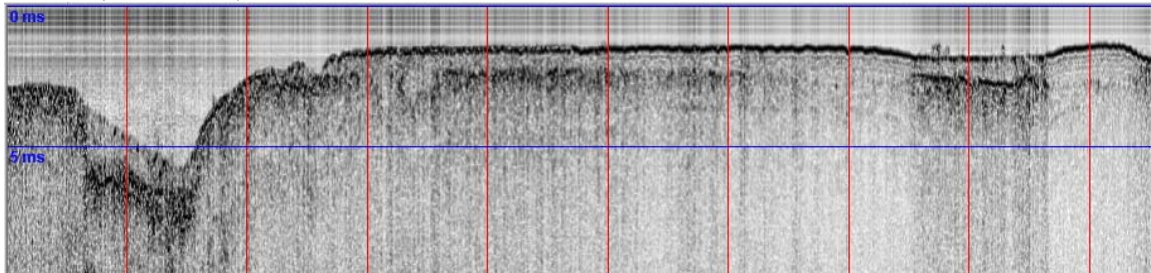
Line 4 (0-350m; 25m spacing)



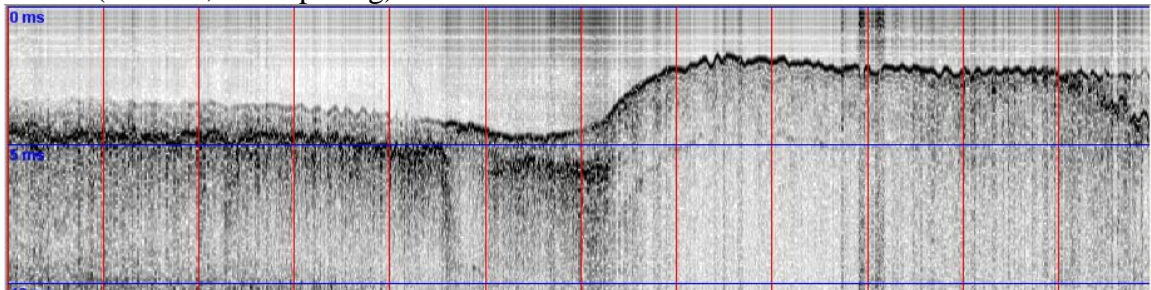
Line 5 (0-450m)



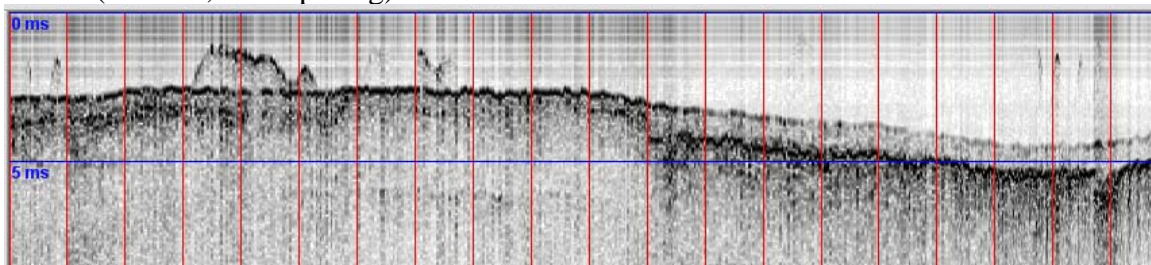
Line 5 (400-800m)



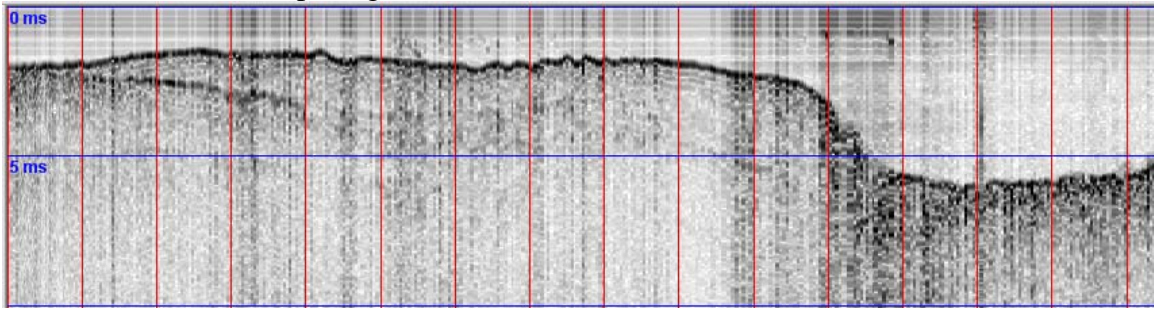
Line 6 (0-275m; 25m spacing)



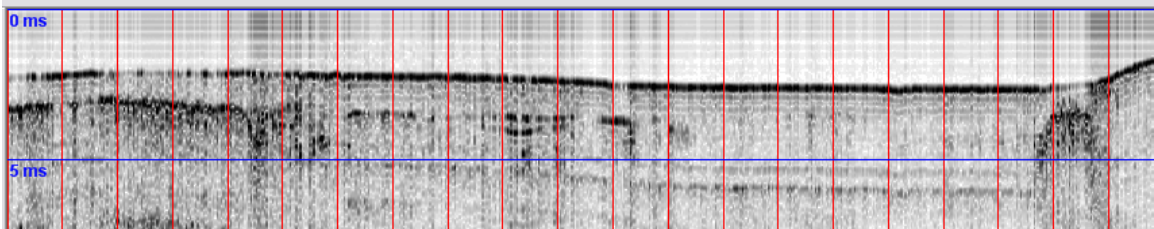
Line 7 (0-190m; 10m spacing)



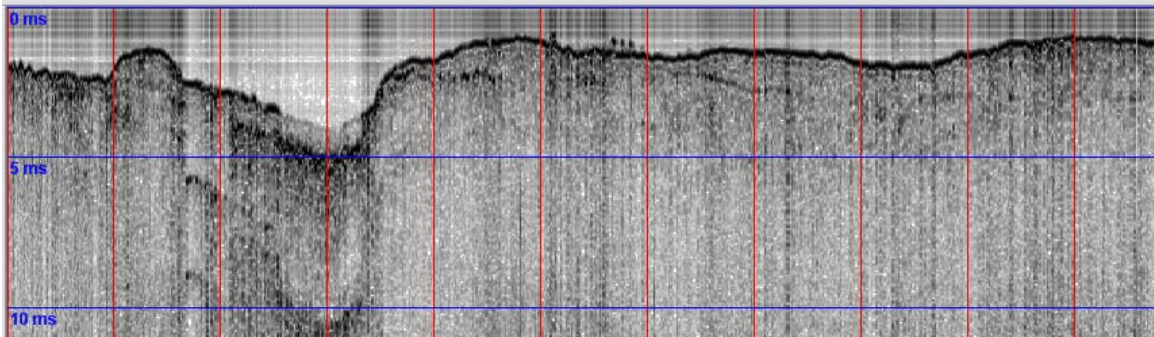
Line 8 (0-150m; 10m spacing)



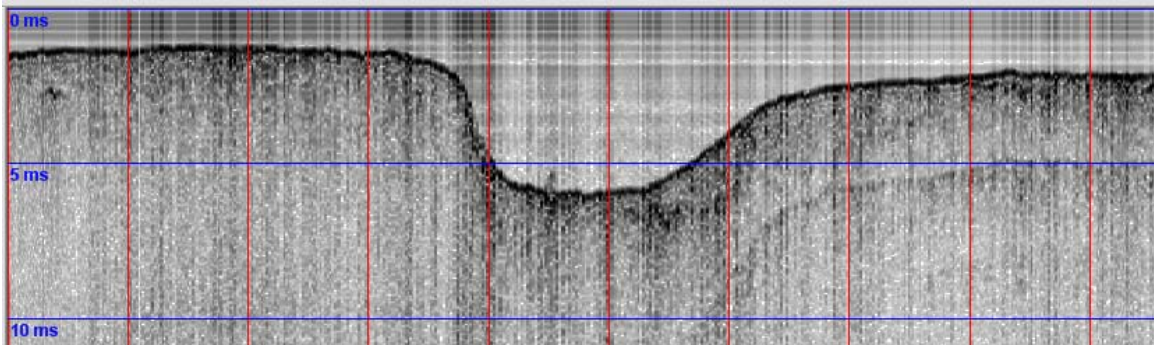
Line 8_1 (0-200m; 10m spacing)



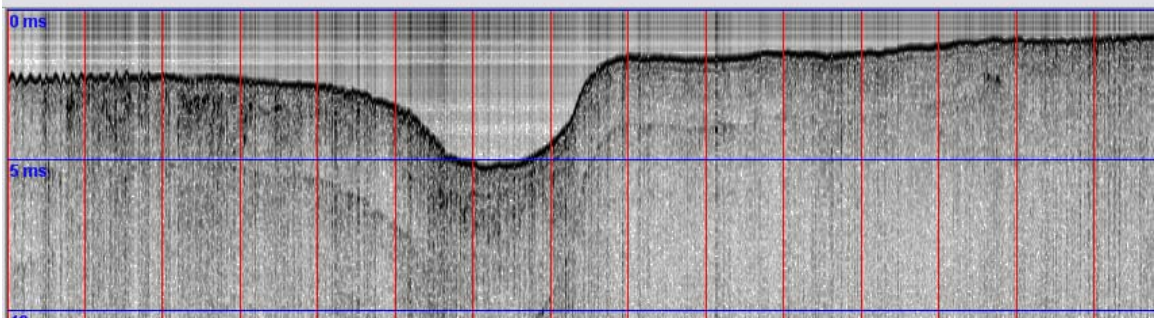
Line 10 (0-250m; 25m spacing)



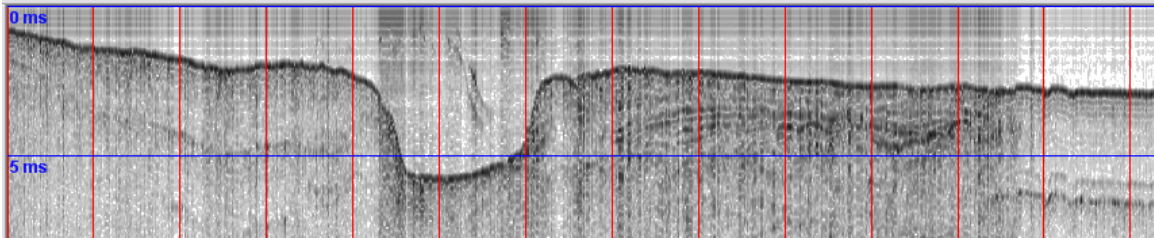
Line 11 (0-225m; 25m spacing)



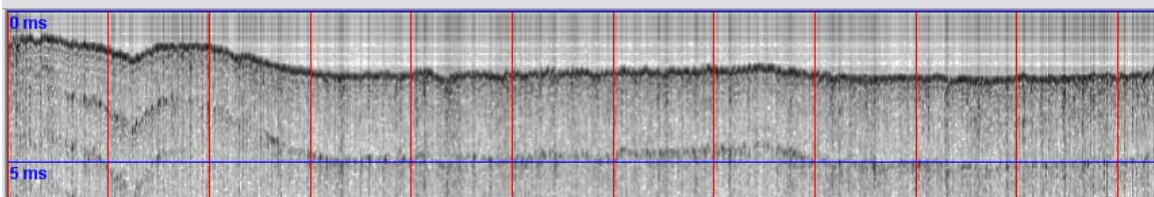
Line 12 (0-350m; 25m spacing)



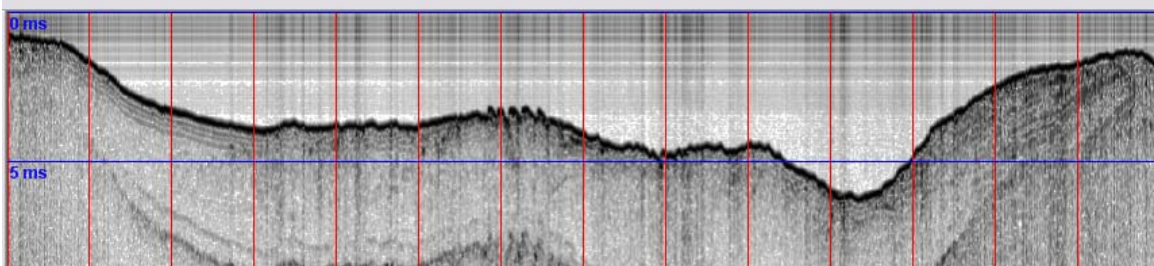
Line 13 (0-325m; 25m spacing)



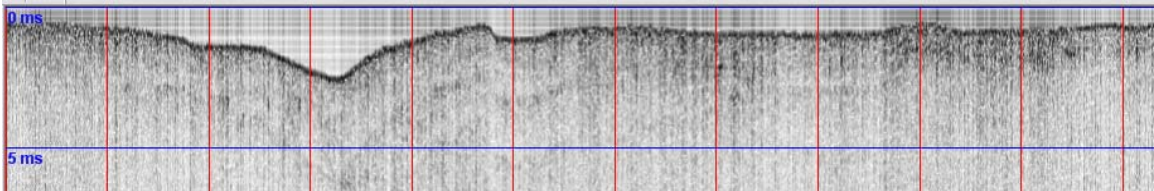
Line 14 (0-550m)



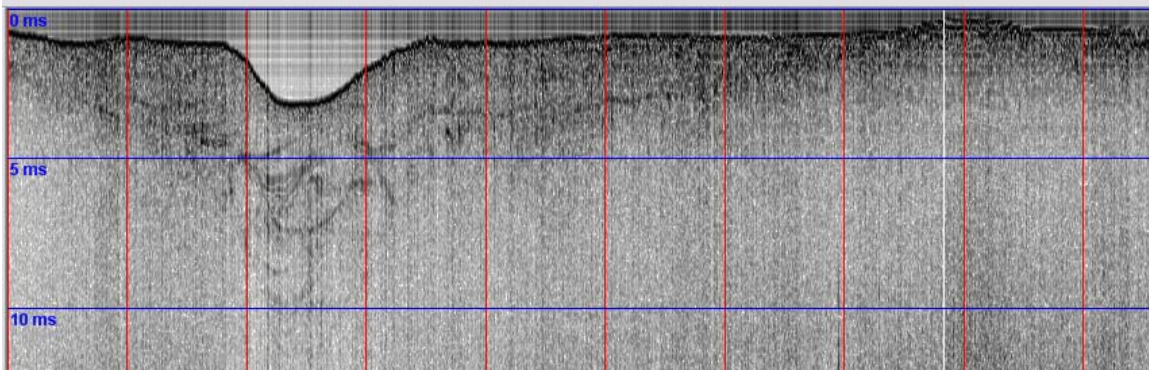
Line 15 (0-325m; 25m spacing)



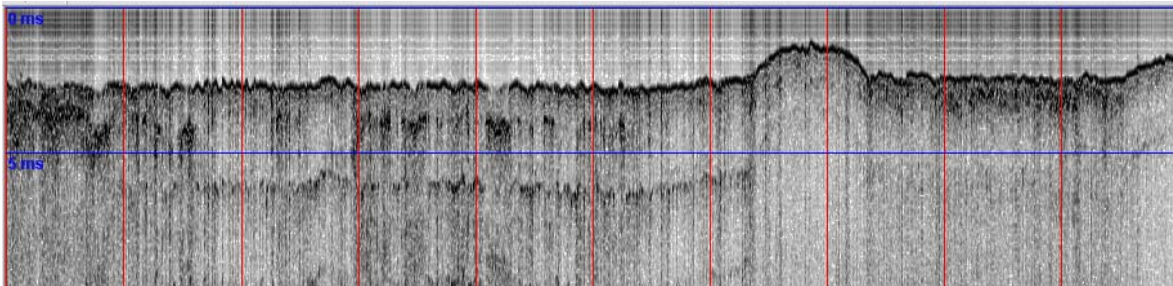
Line 16 (0-550m)



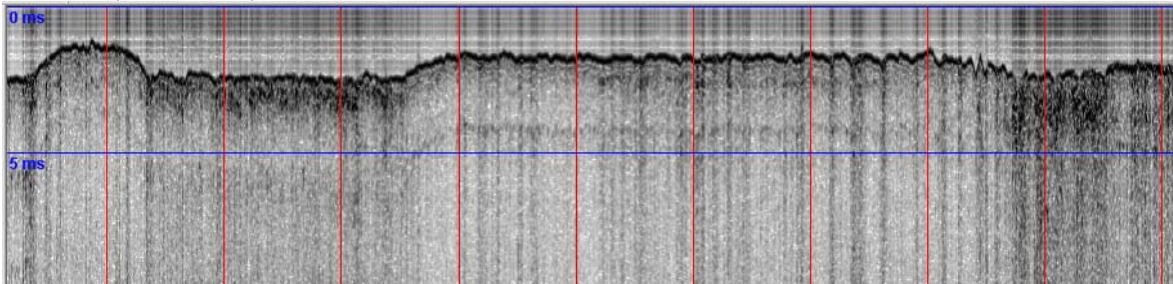
Line 17 (0-450m)



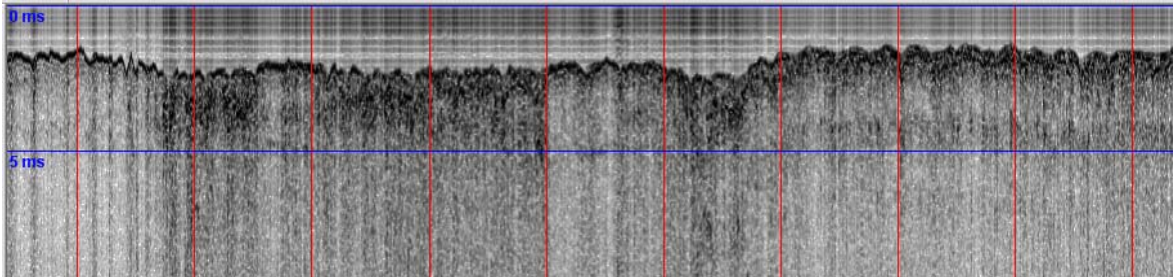
Line 19 (0-450m)



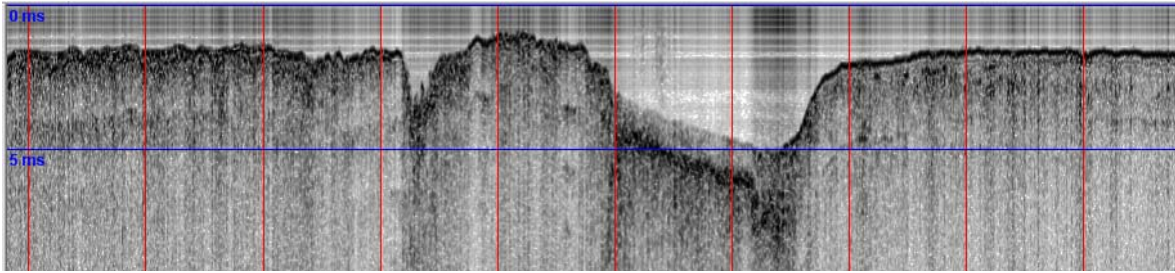
Line 19 (350-800m)



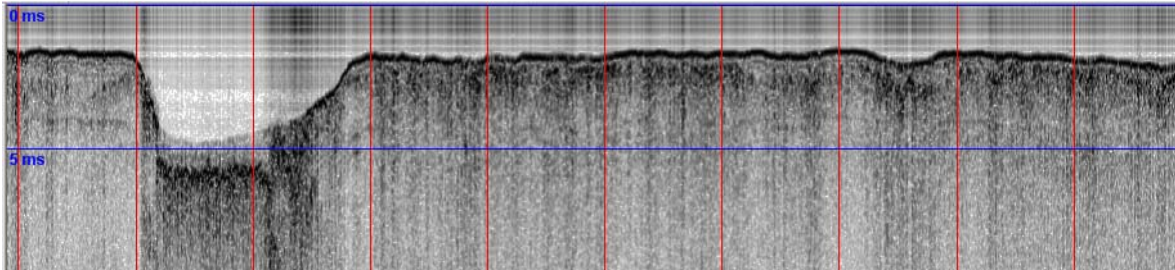
Line 19 (700-1150m)



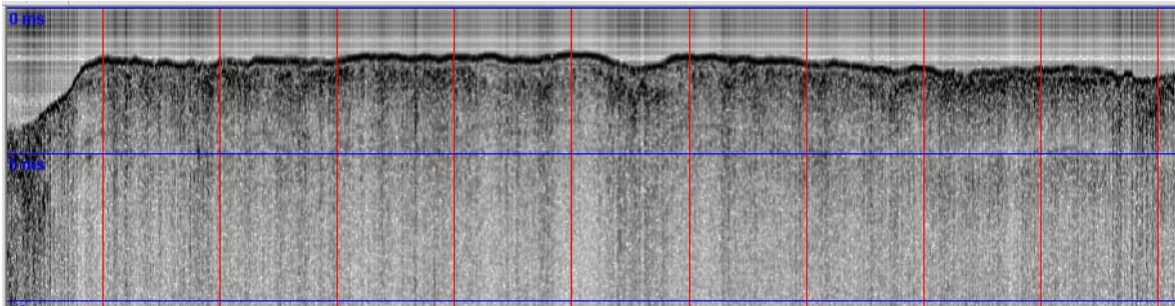
Line 19 (1150-1600m)



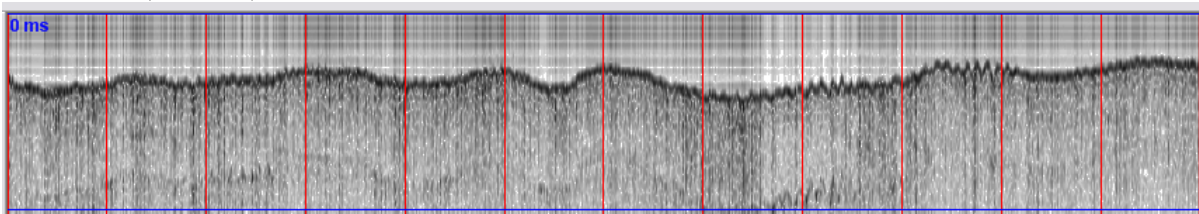
Line 19 (1600-2050m)



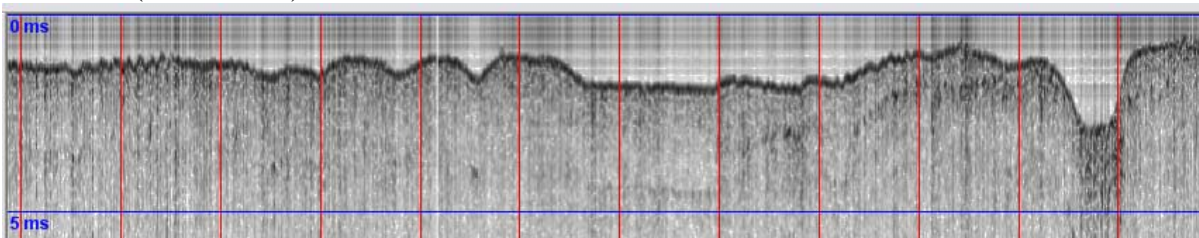
Line 19 (1750-2200m)



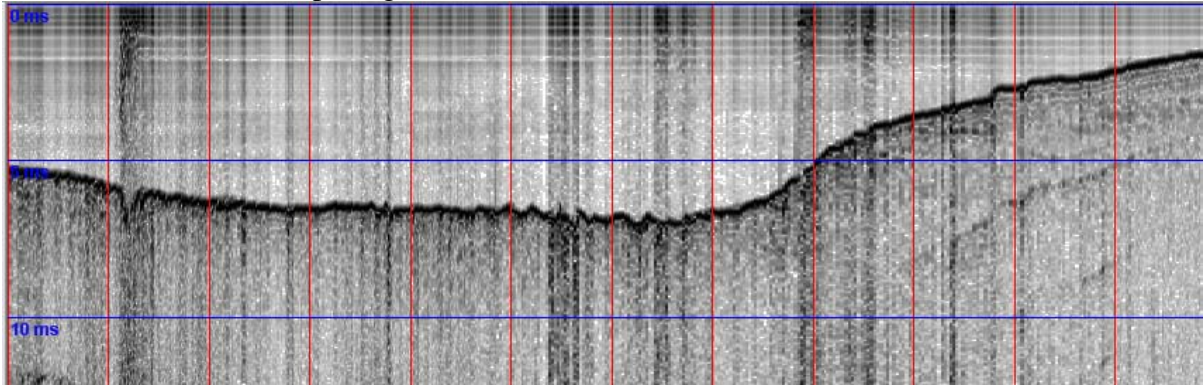
Line 20_1 (0-600m)



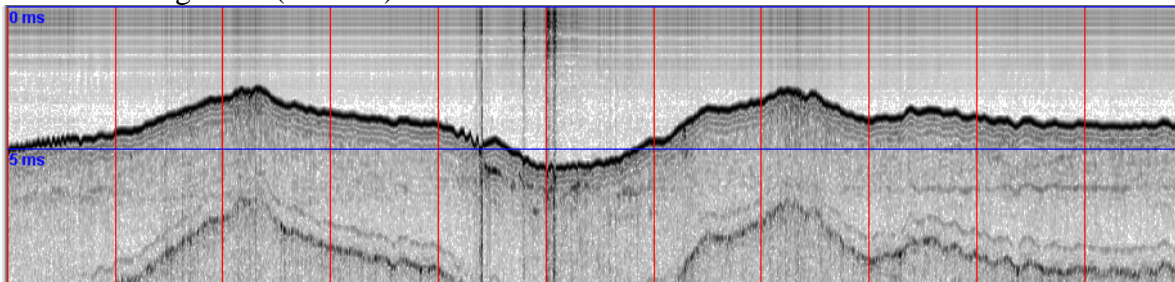
Line 20_1(600-1150m)



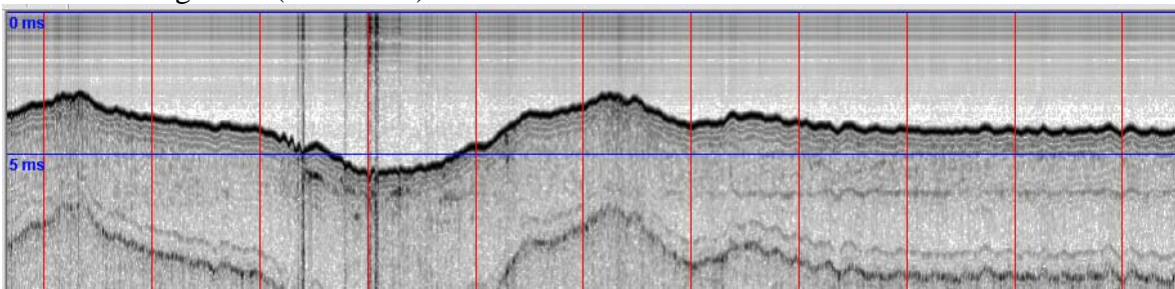
Line 21 (0-110m; 10m spacing)



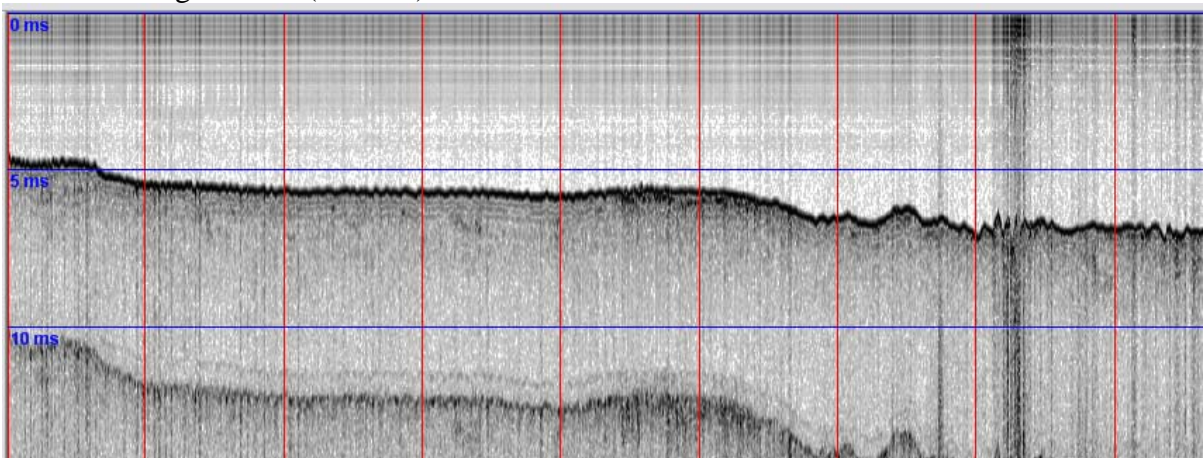
Line offshoregordon (0-500m)



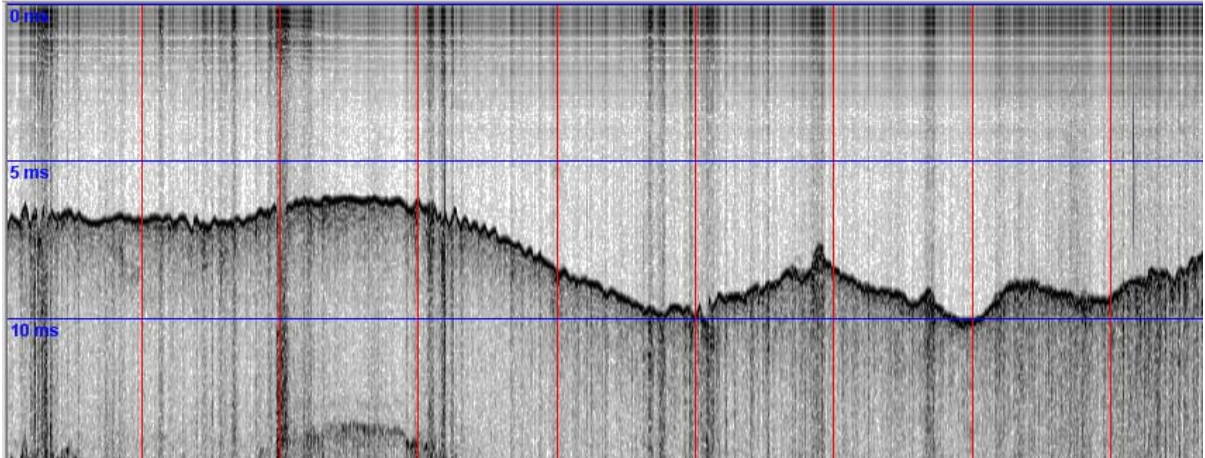
Line offshoregordon (100-600m)



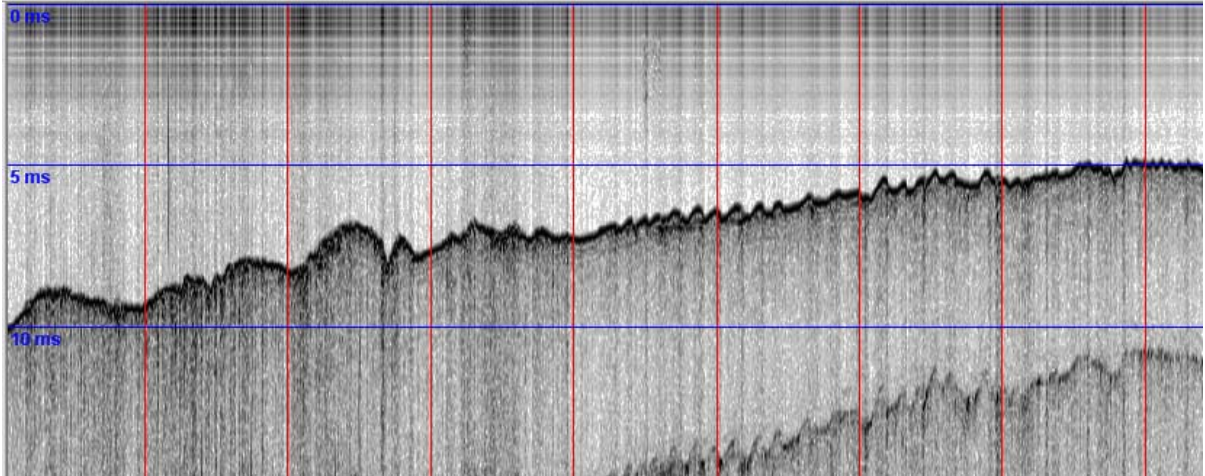
Line offshoregordon_1 (0-400m)



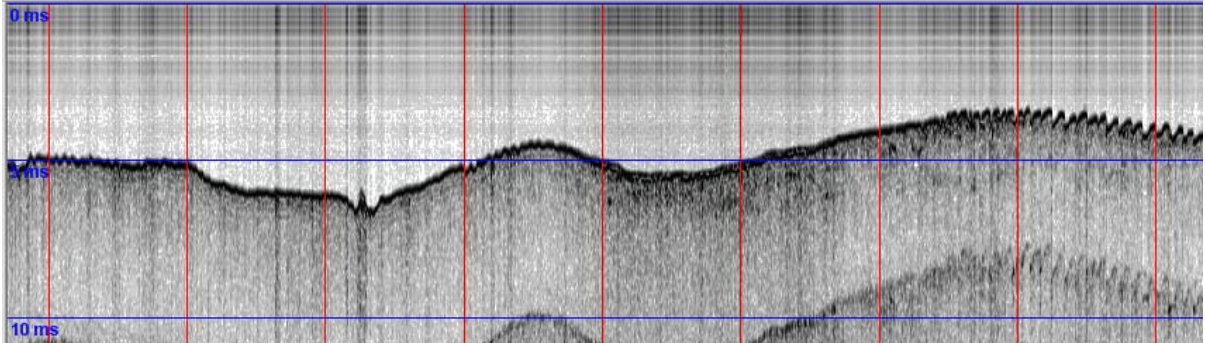
Line offshoregordon_1 (400-750)



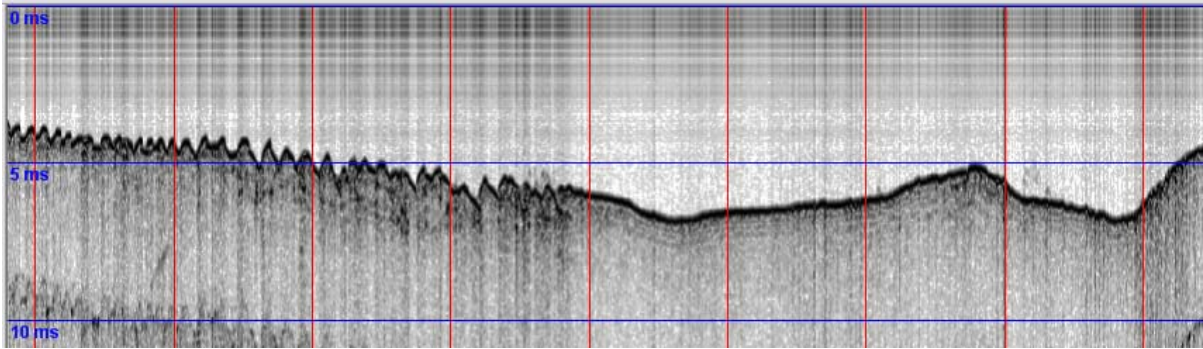
Line offshoregordon_1 (750-1100)



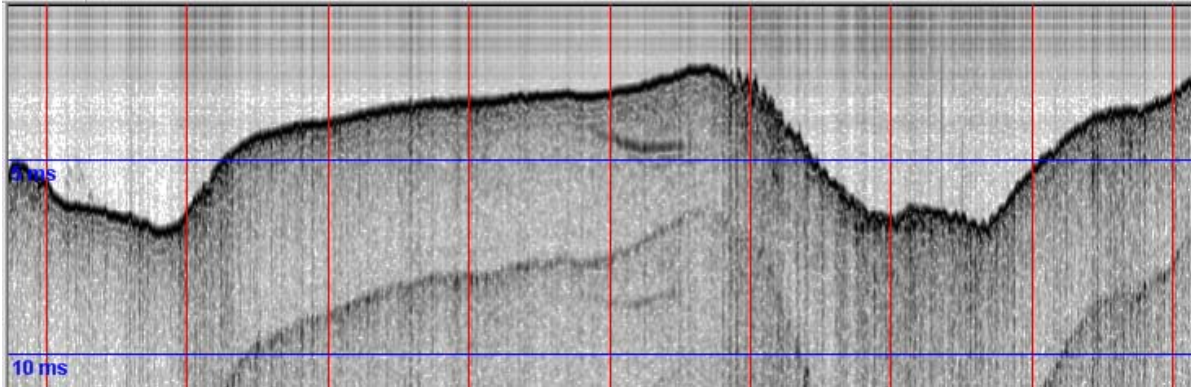
Line offshoregordon_1 (1100-1500)



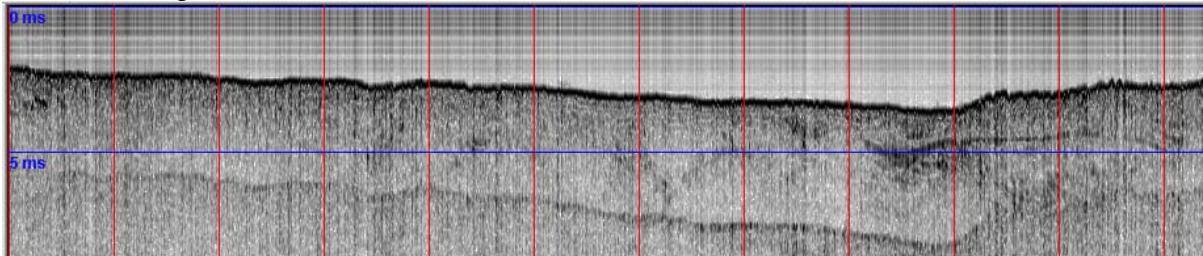
Line offshoregordon_1 (1500-1900)



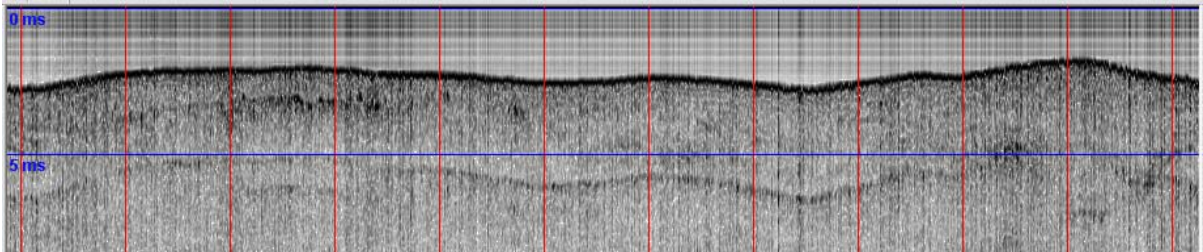
Line offshoregordon_1 (1850-2250m)



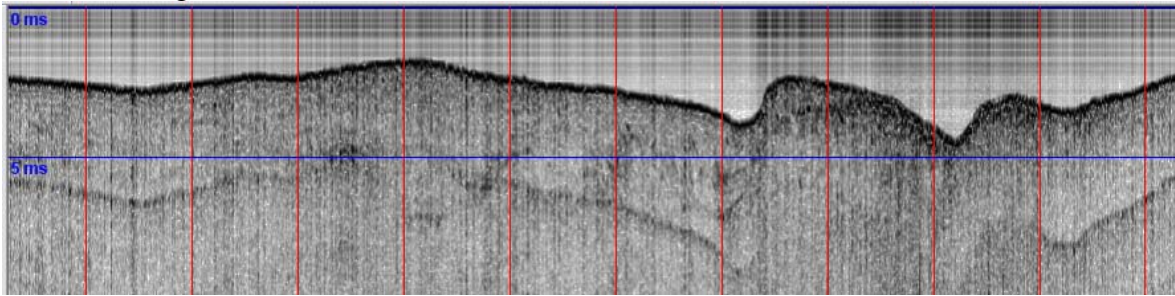
Line offshoregordon_2 (0-550m)



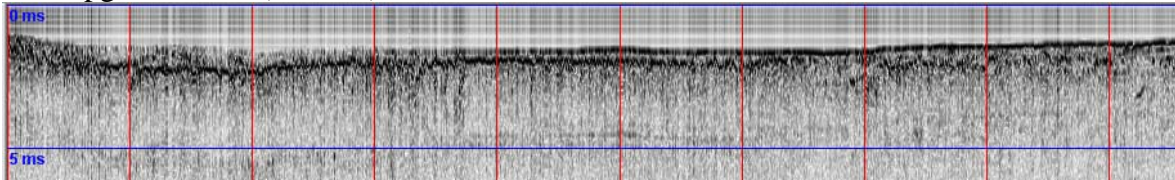
Line offshoregordon_2 (550-1100m)



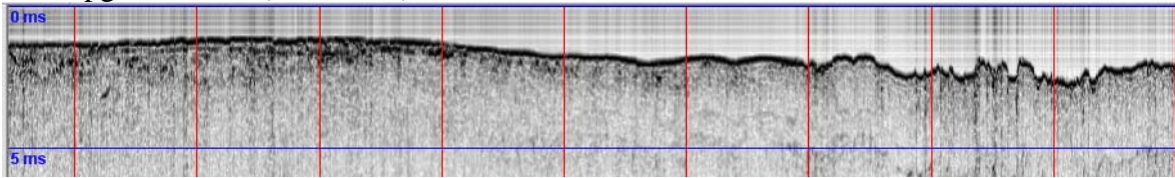
Line offshoregordon_2 (900-1400m)



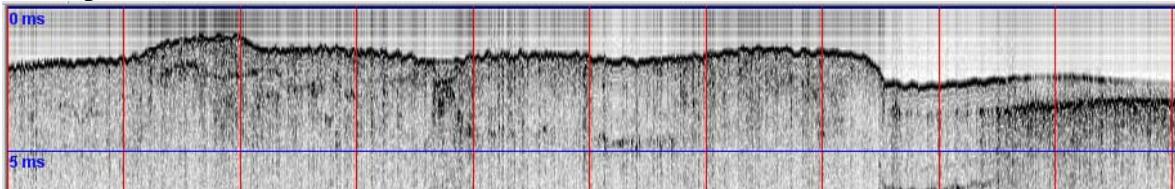
Line upgordonriver (0-450m)



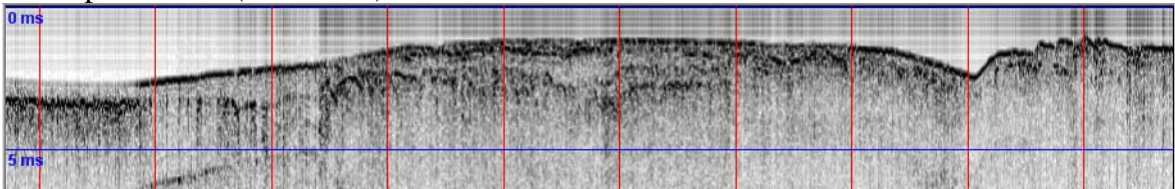
Line upgordonriver (450-900m)



Line uphaldeman (0-500m)



Line uphaldeman (500-950m)



Line uprockcreek (0-500m)

