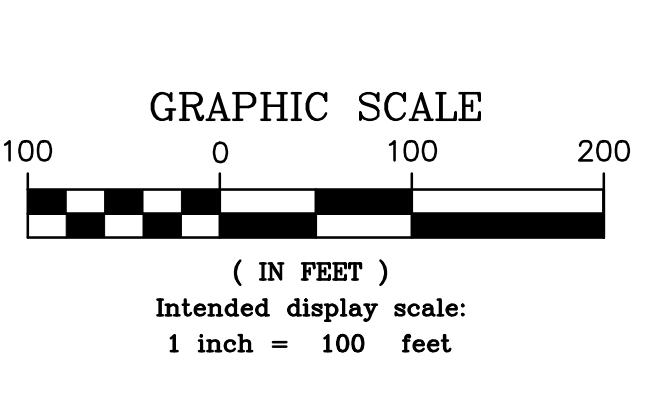
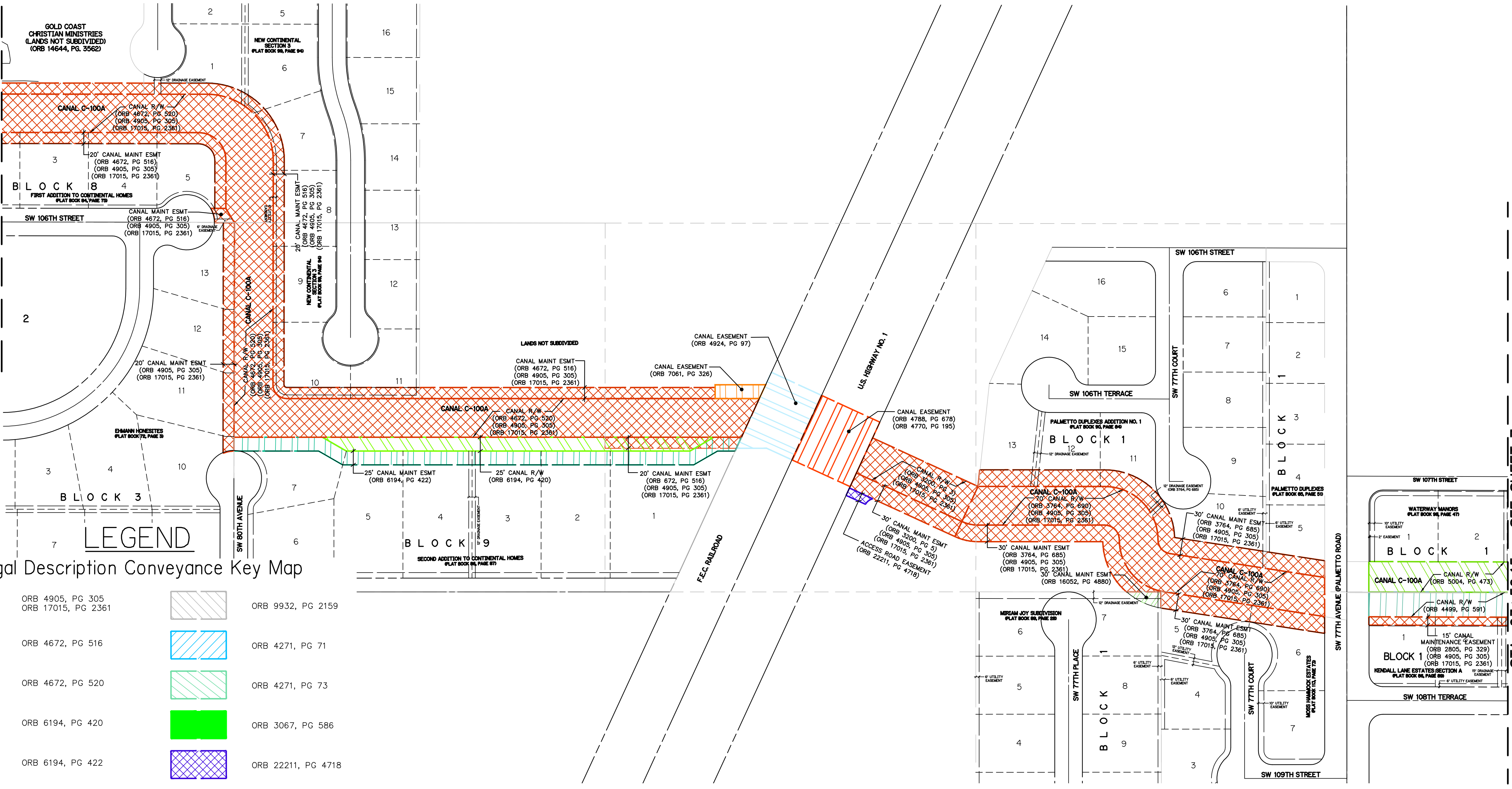


KEY SHEET



CANAL 100A BANK STABILIZATION BOUNDARY & TOPOGRAPHIC MIAMI-DADE, FLORIDA SECTIONS 10, 11, & 14 TOWNSHIP 55 SOUTH RANGE 40 EAST		CADD FILE NO. 13-1009-06 DRAWING NO. SHEET 68 OF
SOUTH FLORIDA WATER MANAGEMENT DISTRICT INFRASTRUCTURE MANAGEMENT BUREAU - SURVEY AND MAPPING SECTION P.O. BOX 24680 3301 GUN CLUB ROAD WEST PALM BEACH, FLORIDA 33416-4680		SCALE AS SHOWN DATE: 6/27/14 CHECKED BY: LUCAS YOUNG & BRIAN YANCY DRAWN BY: JHY FIELD PERSON(S): LUCAS YOUNG & BRIAN YANCY FIELD DATES: JUNE 18, 2014 FIELD BOOK(S): 1723, 1724, 1725, 1726, 1728, 1731, 1734, & 1736 PAGE(S): 1-80, 1-78, 1-79, 1-79, 1-79, 1-17, & 1-74 DATA COLLECTOR FILE(S): MULTIPLE
SOUTH FLORIDA WATER MANAGEMENT DISTRICT INFRASTRUCTURE MANAGEMENT BUREAU - SURVEY AND MAPPING SECTION P.O. BOX 24680 3301 GUN CLUB ROAD WEST PALM BEACH, FLORIDA 33416-4680		DRAWN / CHECKED / DATE JHY / PA / 6-28-14 ADD REMAINING SHEET NUMBERS REVISIONS

STA. 29+61.5 - SEE SHEET 5



STA. 63+56.15 - SEE SHEET 7

LEGEND
Legal Description Conveyance Key Map

	ORB 4905, PG 305 ORB 17015, PG 2361		ORB 9932, PG 2159
	ORB 4672, PG 516		ORB 4271, PG 71
	ORB 4672, PG 520		ORB 4271, PG 73
	ORB 6194, PG 420		ORB 3067, PG 586
	ORB 6194, PG 422		ORB 22211, PG 4718
	ORB 7061, PG 326		
	ORB 4294, PG 97		
	ORB 4788, PG 678 ORB 4770, PG 195		
	ORB 3674, PG 685		
	ORB 3067, PG 433		
	ORB 3764, PG 690		
	ORB 4499, PG 591		
	ORB 16052, PG 4880		
	ORB 5004, PG 473		
	ORB 4994, PG 368		
	DEED UNKNOWN		

SURVEYORS' NOTES AND REPORT:

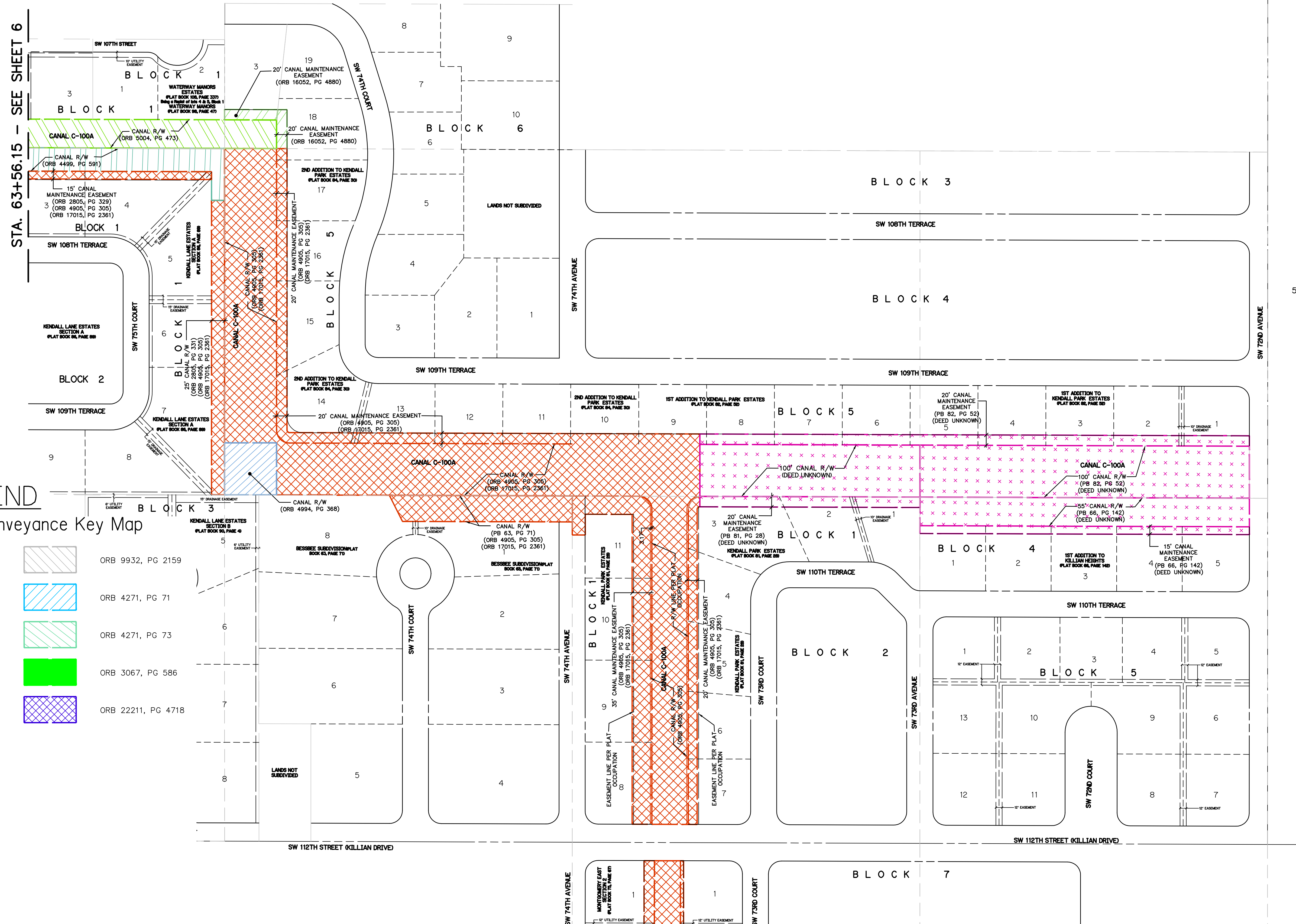
1. Legal descriptions used were taken from title "Real Estate Certification-Canal Rehabilitation within the C-100A Right of Way - located in Sections 10, 11, 14, 22, 23, 27 and 34, Township 55 South, Range 40 East, Miami-Dade County, Florida by Mike Debish, senior title examiner, Title and Closing, Real Estate Section, Land Resources Bureau, dated December 20, 2012 and accompanying documents.
2. Record documents shown in addition to those in legend identify chain of transfer in order of first to last.
3. No search of the Public Records was performed by GCY Incorporated.
4. ORB, PG Denotes Official Record Book and page.
5. PB, PG Denotes Plat Book and page.

CANAL 100A BANK STABILIZATION
BOUNDARY & TOPOGRAPHIC
MIAMI-DADE, FLORIDA
SECTIONS 10, 11, & 14
TOWNSHIP 55 SOUTH
RANGE 40 EAST

DRAWN: RAI | CHECKED: GY | DATE: 6/27/14 | SCALE: AS SHOWN
FIELD PERSONS: LUCAS YOUNG & BRIAN YANCY
FIELD DATES: JUNE 18, 2014
FIELD BOOKS: 1723, 1724, 1726, 1728, 1731, 1734, & 1736
PAGES: 1-80, 1-78, 1-79, 1-79, 1-79, 1-17, & 1-74
DATA COLLECTOR FILE(S): MULTIPLE

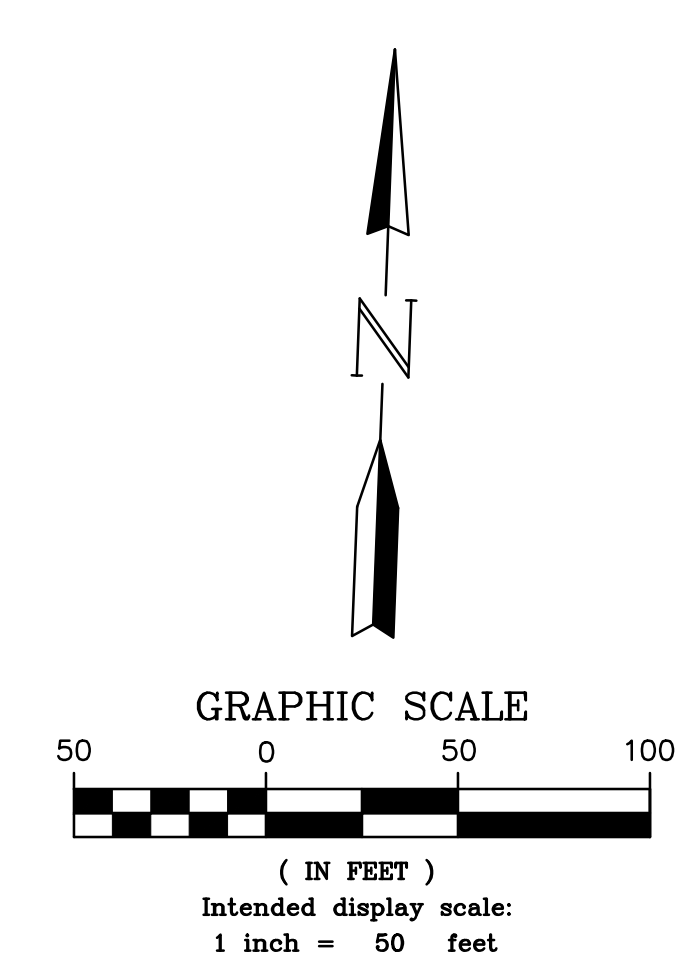
SOUTH FLORIDA WATER MANAGEMENT DISTRICT
INFRASTRUCTURE MANAGEMENT BUREAU - SURVEY AND MAPPING SECTION
P.O. BOX 24680
3301 GUN CLUB ROAD
WEST PALM BEACH, FLORIDA 33416-4680

NO.	DATE	BY	REVISIONS



STA. 63+56.15 - SEE SHEET 6

STA. 91+04.53 - SEE SHEET 8



LEGEND

Legal Description Conveyance Key Map

	ORB 4905, PG 305 ORB 17015, PG 2361		ORB 9932, PG 2159
	ORB 4672, PG 516		ORB 4271, PG 71
	ORB 4672, PG 520		ORB 4271, PG 73
	ORB 6194, PG 420		ORB 3067, PG 586
	ORB 6194, PG 422		ORB 22211, PG 4718
	ORB 7061, PG 326		
	ORB 4294, PG 97		
	ORB 4788, PG 678 ORB 4770, PG 195		
	ORB 3674, PG 685		
	ORB 3067, PG 433		
	ORB 3764, PG 690		
	ORB 4499, PG 591		
	ORB 16052, PG 4880		
	ORB 5004, PG 473		
	ORB 4994, PG 368		
	DEED UNKNOWN		

SURVEYORS' NOTES AND REPORT:

- Legal descriptions used were taken from title "Real Estate Certification-Canal Rehabilitation within the C-100A Right of Way - located in Sections 10, 11, 14, 22, 23, 27 and 34, Township 55 South, Range 40 East, Miami-Dade County, Florida by Mike Debish, senior title examiner, Title and Closing, Real Estate Section, Land Resources Bureau, dated December 20, 2012 and accompanying documents.
- Record documents shown in addition to those in legend identify chain of transfer in order of first to last.
- No search of the Public Records was performed by GCY Incorporated.
- ORB, PG Denotes Official Record Book and page.
- PB, PG Denotes Plat Book and page.



CANAL 100A BANK STABILIZATION BOUNDARY & TOPOGRAPHIC MIAMI-DADE, FLORIDA SECTIONS 10, 11, & 14 TOWNSHIP 55 SOUTH RANGE 40 EAST

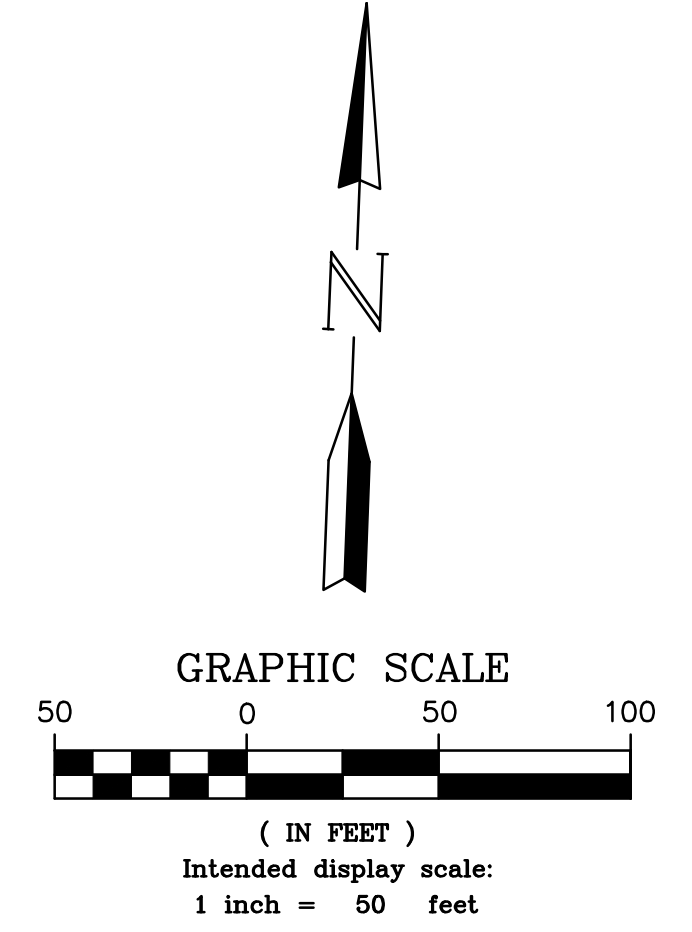
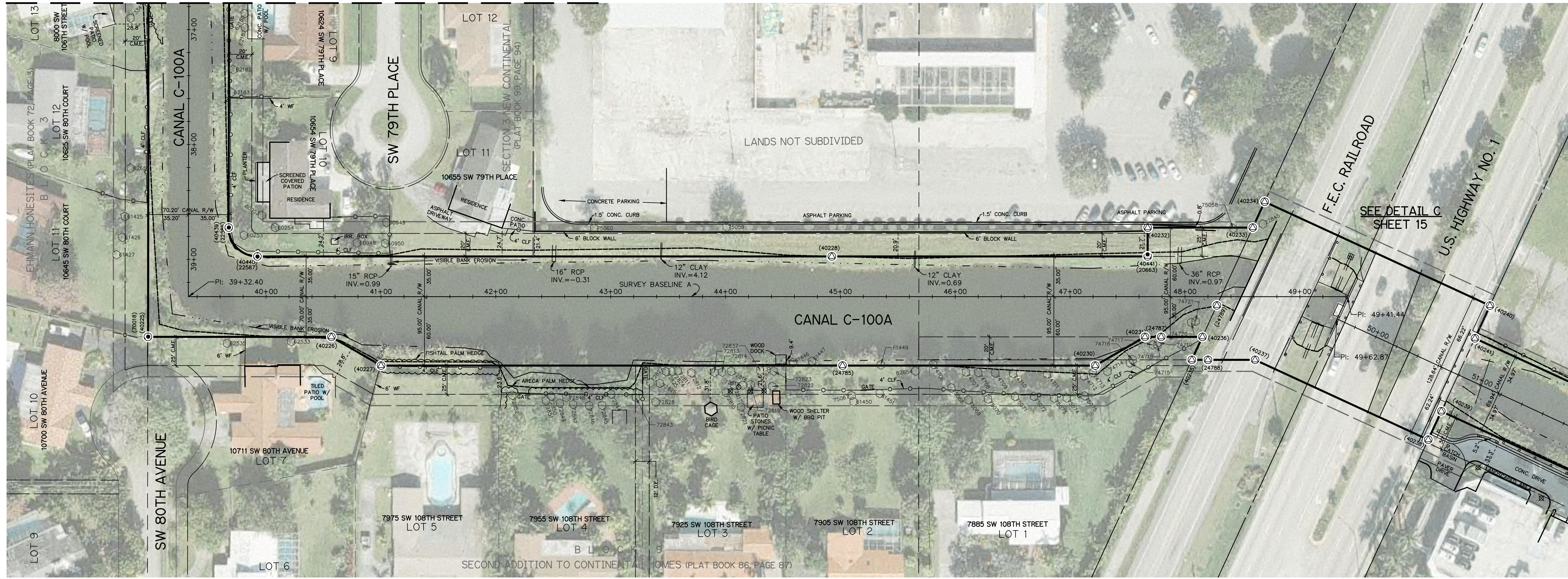
DRAWN: RAH | CHECKED: GCT | DATE: 6/27/14 | SCALE: AS SHOWN

FIELD PERSON(S): LUCAS YOUNG & BRIAN YANCY
 FIELD DATES: JUNE 18, 2014
 FIELD BOOK(S): 1723, 1724, 1726, 1728, 1731, 1734, & 1736
 PAGES(S): 1-80, 1-78, 1-79, 1-79, 1-79, 1-17, & 1-74
 DATA COLLECTOR FILE(S): MULTIPLE

SOUTH FLORIDA WATER MANAGEMENT DISTRICT
 INFRASTRUCTURE MANAGEMENT BUREAU - SURVEY AND MAPPING SECTION
 P.O. BOX 24680
 3301 GUN CLUB ROAD
 WEST PALM BEACH, FLORIDA 33416-4680

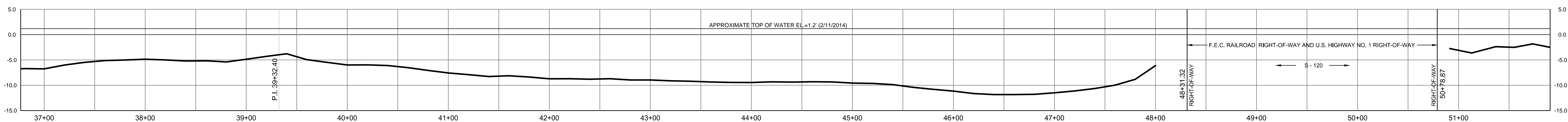
CADD FILE NO. 13-1009-06
 DRAWING NO. _____
 SHEET OF **68**

STA. 36+76.9 – SEE SHEET 24



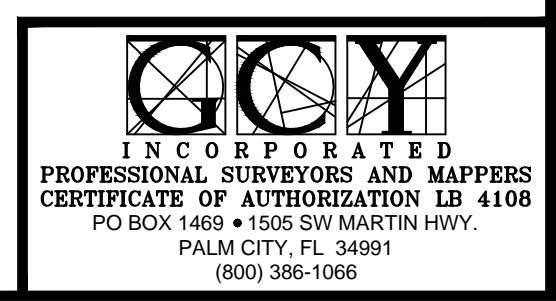
FOR TREE INFORMATION
SEE SHEET 67

STA. 51+90.7 – SEE SHEET 26



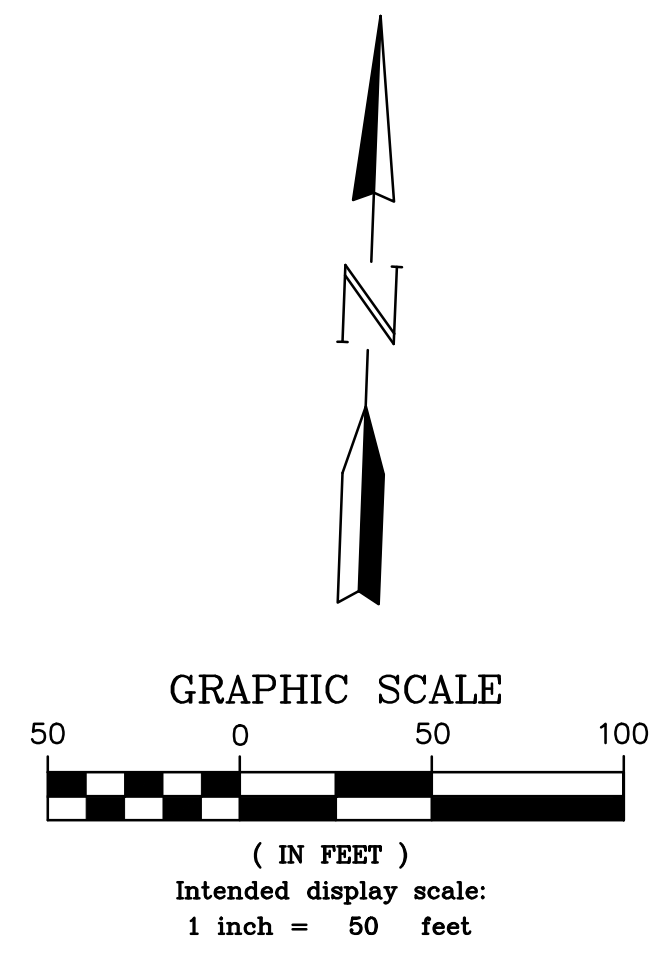
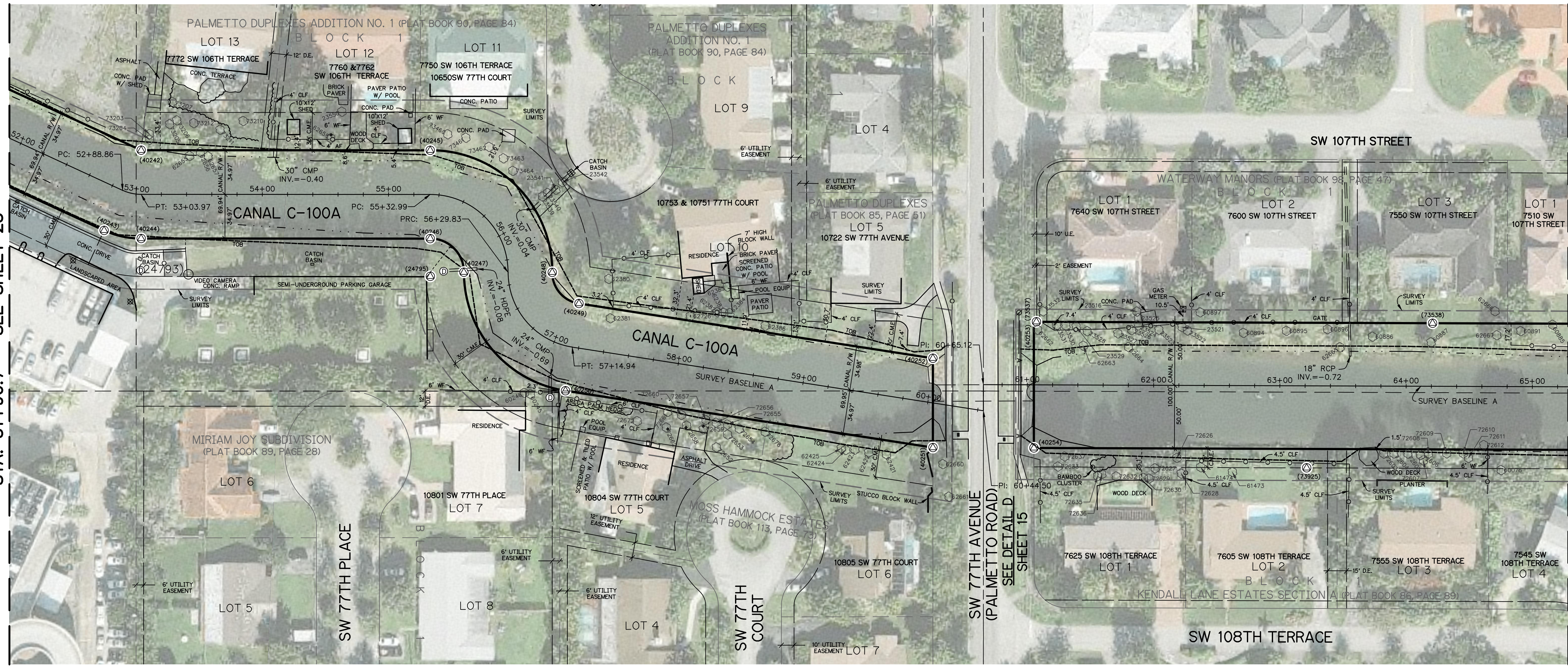
SURVEY BASELINE 'A' PROFILE
(Intended Horizontal Display Scale: 1"=50')
(Intended Vertical Display Scale: 1"=5')

SOUTH FLORIDA WATER MANAGEMENT DISTRICT INFRASTRUCTURE MANAGEMENT BUREAU – SURVEY AND MAPPING SECTION P. O. BOX 24680 3301 GUN CLUB ROAD WEST PALM BEACH, FLORIDA 33416-4680	
DRAWN: JMY CHECKED: GY DATE: 6/27/14 SCALE: AS SHOWN	FIELD PERSON(S): LUCAS YOUNG & BRIAN YANCY FIELD DATE(S): JUNE 18, 2014 FIELD BOOK(S): 1723, 1724, 1725, 1726, 1727, 1728, & 1729 PAGE(S): 1-80, 1-78, 1-79, 1-79, 1-17, & 1-74 DATA COLLECTOR FILE(S): MULTIPLE
CANAL 100A BANK STABILIZATION BOUNDARY & TOPOGRAPHIC MIAMI-DADE, FLORIDA SECTIONS 10, 11, & 14 TOWNSHIP 55 SOUTH RANGE 40 EAST	
CADD FILE NO. 13-1009-06 DRAWING NO.	SHEET 25 OF 68

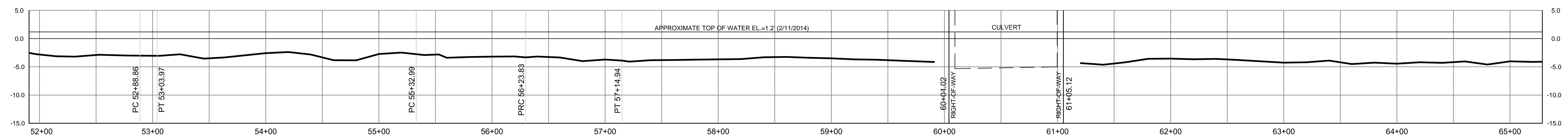


STA. 51+90.7 - SEE SHEET 25

STA. 65+28.6 - SEE SHEET 27

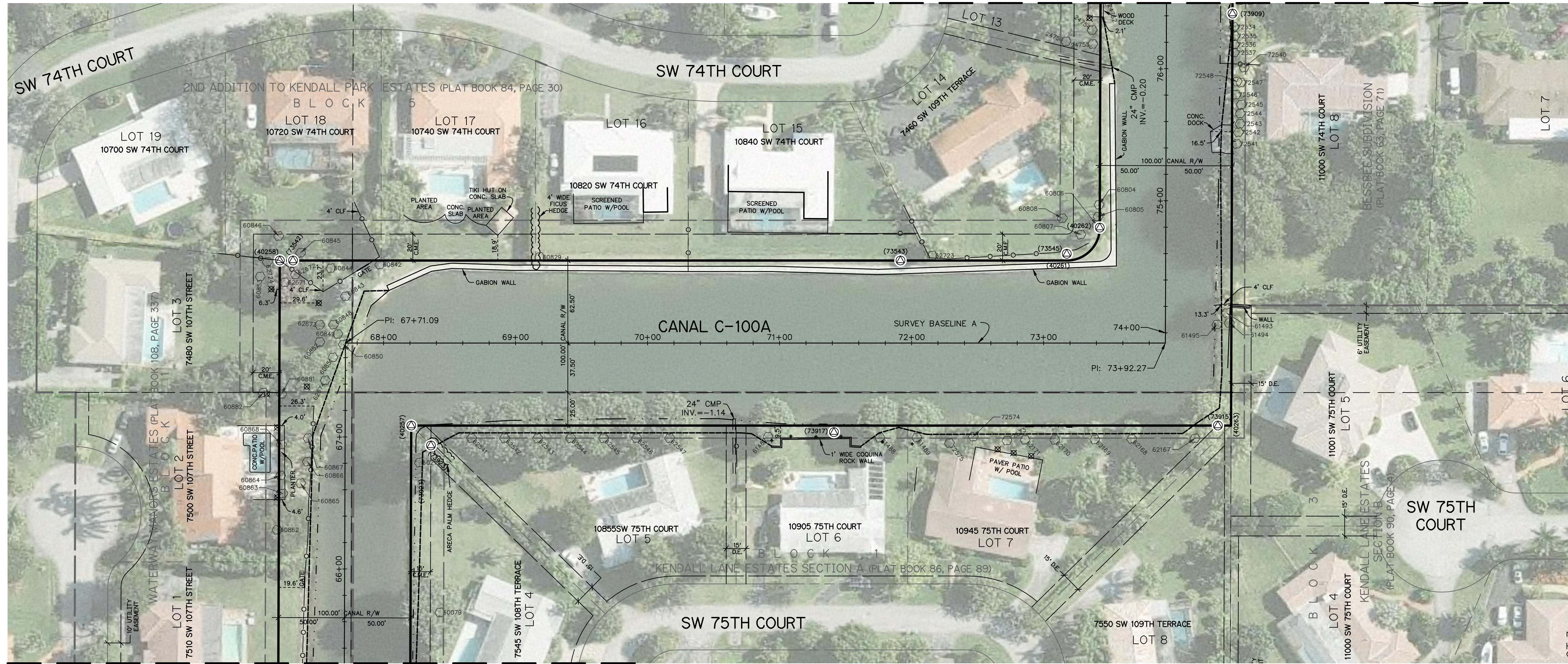


FOR TREE INFORMATION SEE SHEET 67

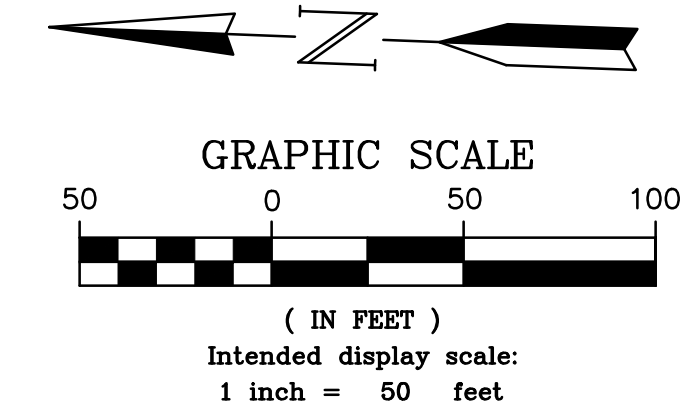


SURVEY BASELINE 'A' PROFILE
 (Intended Horizontal Display Scale: 1"=50')
 (Intended Vertical Display Scale: 1"=5')

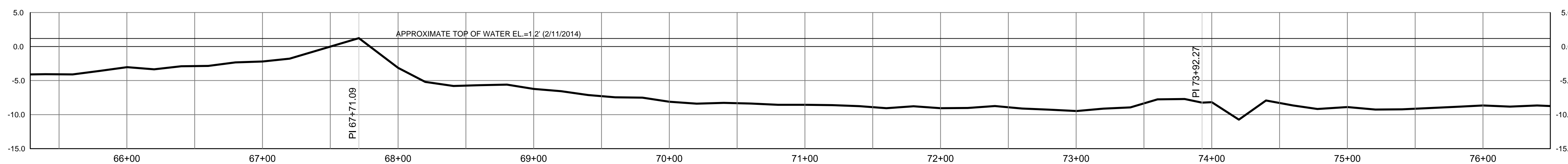
<p>CANAL 100A BANK STABILIZATION BOUNDARY & TOPOGRAPHIC MIAMI-DADE, FLORIDA SECTIONS 10, 11, & 14 TOWNSHIP 55 SOUTH RANGE 40 EAST</p>	<p>CADD FILE NO. 13-1009-06 DRAWING NO. 26 OF 68</p>
<p>DATE: 6/27/14 CHECKED BY: LUCAS YOUNG & BRIAN YANCY DRAWN BY: JUNE 18, 2014 FIELD BOOKS: 1723, 1724, 1725, 1726, 1727, 1728, & 1729 PAGE(S): 1-80, 1-78, 1-79, 1-79, 1-17, & 1-74 DATA COLLECTOR FILE(S): MULTIPLE</p>	<p>REVISIONS DATE CHECKED BY PA 6-28-14 DRAWN BY DATE</p>
<p>SOUTH FLORIDA WATER MANAGEMENT DISTRICT INFRASTRUCTURE MANAGEMENT BUREAU - SURVEY AND MAPPING SECTION P.O. BOX 24680 3301 GUN CLUB ROAD WEST PALM BEACH, FLORIDA 33416-4680</p>	<p>GOY INCORPORATED PROFESSIONAL SURVEYORS AND MAPPERS CERTIFICATE OF AUTHORIZATION LB 4108 PO BOX 1468 • 1505 SW MARTIN HWY. PALM CITY, FL 34991 (800) 386-1066</p>



STA. 65+28.6 – SEE SHEET 26



TREE INFORMATION					
Point Number	Northing	Easting	Latitude	Longitude	Size & Description
24754	485892.03	881521.98	N25°40'7.604"	W80°18'56.881"	10" Coconut
24755	485891.31	881511.43	N25°40'7.598"	W80°18'56.997"	10" Coconut
24756	485911.63	881512.67	N25°40'7.799"	W80°18'56.982"	14" Bottle Palm
60079	486369.14	881062.50	N25°40'12.353"	W80°19'1.876"	48" Rose Apple
60217	486388.94	881175.27	N25°40'12.544"	W80°19'0.643"	36" Rose Apple
60804	485881.89	881390.09	N25°40'7.511"	W80°18'58.323"	12" Queen Palm
60805	485882.19	881381.07	N25°40'7.514"	W80°18'58.422"	50" Bananas
60806	485883.03	881374.73	N25°40'7.523"	W80°18'58.491"	50" Bananas
60807	485894.82	881366.89	N25°40'7.64"	W80°18'58.576"	12" Queen Palm
60808	485909.27	881378.74	N25°40'7.782"	W80°18'58.446"	5" Black Olive
60842	486424.66	881324.01	N25°40'12.89"	W80°18'59.015"	16" Bismark
60843	486449.72	881299.02	N25°40'13.139"	W80°18'59.287"	16" Bismark
60844	486461.61	881319.85	N25°40'13.256"	W80°18'59.058"	8" Chinese Fan Palm
60845	486484.96	881330.55	N25°40'13.487"	W80°18'58.94"	14" Live Oak
60846	486502.12	881342.60	N25°40'13.656"	W80°18'58.807"	8" Live Oak
60848	486457.99	881277.22	N25°40'13.222"	W80°18'59.525"	12" Queen Palm
60849	486454.42	881270.21	N25°40'13.187"	W80°18'59.601"	8" Queen Palm
60850	486449.93	881262.56	N25°40'13.143"	W80°18'59.685"	10" Queen Palm
60851	486457.50	881252.40	N25°40'13.219"	W80°18'59.796"	12" Queen Palm
60852	486467.87	881263.68	N25°40'13.321"	W80°18'59.672"	8" Coconut
60853	486514.80	881311.50	N25°40'13.783"	W80°18'59.147"	48" Orchid Tree
60862	486494.72	881202.27	N25°40'13.594"	W80°19'1.238"	18" Black Olive
60863	486491.40	881147.95	N25°40'13.56"	W80°19'0.935"	14" Coconut
60864	486493.65	881161.46	N25°40'13.582"	W80°19'0.788"	10" Coconut
60865	486478.32	881156.26	N25°40'13.43"	W80°19'0.845"	14" Coconut
60866	486473.78	881172.81	N25°40'13.384"	W80°19'0.665"	16" Coconut
60867	486473.96	881190.54	N25°40'13.385"	W80°19'0.471"	15" Coconut
60868	486493.90	881184.97	N25°40'13.583"	W80°19'0.531"	12" Coconut
60881	486495.24	881223.19	N25°40'13.594"	W80°19'0.113"	10" Queen Palm
60882	486509.15	881223.68	N25°40'13.732"	W80°19'0.107"	10" Queen Palm
61487	486125.79	881204.89	N25°40'9.936"	W80°19'0.334"	48" Rose Apple
61488	486041.07	881207.35	N25°40'9.097"	W80°19'0.312"	48" Rose Apple
61489	486013.13	881208.58	N25°40'8.82"	W80°19'0.3"	48" Rose Apple
61493	485782.10	881311.76	N25°40'6.526"	W80°18'59.185"	10" Coconut
61494	485779.95	881304.44	N25°40'6.505"	W80°18'59.265"	10" Coconut
61495	485789.24	881302.72	N25°40'6.597"	W80°18'59.284"	10" Coconut
62167	485802.49	881216.03	N25°40'6.733"	W80°19'0.23"	48" Rose Apple
62168	485850.44	881213.79	N25°40'7.208"	W80°19'0.252"	48" Rose Apple
62169	485878.27	881212.31	N25°40'7.484"	W80°19'0.267"	48" Rose Apple
62170	485908.66	881210.80	N25°40'7.785"	W80°19'0.281"	48" Rose Apple
62171	485931.06	881210.00	N25°40'8.007"	W80°19'0.289"	48" Rose Apple
62541	486350.15	881195.29	N25°40'12.159"	W80°19'0.426"	40" Rose Apple
62542	486325.17	881196.25	N25°40'11.911"	W80°19'0.417"	40" Rose Apple
62543	486300.19	881197.20	N25°40'11.664"	W80°19'0.408"	40" Rose Apple
62544	486275.21	881198.16	N25°40'11.416"	W80°19'0.399"	40" Rose Apple
62545	486250.23	881199.11	N25°40'11.169"	W80°19'0.39"	40" Rose Apple
62546	486225.25	881200.07	N25°40'10.921"	W80°19'0.381"	40" Rose Apple
62547	486200.26	881201.02	N25°40'10.674"	W80°19'0.372"	40" Rose Apple
62671	486496.09	881307.77	N25°40'13.598"	W80°18'59.189"	24" Sandalwood
62672	486488.18	881314.04	N25°40'13.52"	W80°18'59.12"	12" Queen Palm
62673	486468.38	881276.57	N25°40'13.325"	W80°18'59.531"	10" Coconut
62674	486462.59	881234.86	N25°40'13.27"	W80°18'59.987"	40" Ficus
62723	486006.64	881346.75	N25°40'8.748"	W80°18'58.79"	12" Rose Apple
62724	486509.87	881322.82	N25°40'13.734"	W80°18'59.023"	30" Bishopwood
72534	485784.94	881528.41	N25°40'6.543"	W80°18'56.817"	10" Coconut
72535	485784.00	881521.59	N25°40'6.534"	W80°18'56.892"	10" Coconut
72536	485784.08	881515.08	N25°40'6.535"	W80°18'56.963"	10" Coconut
72537	485784.02	881509.02	N25°40'6.535"	W80°18'57.029"	10" Coconut
72540	485775.96	881497.97	N25°40'6.456"	W80°18'57.15"	8" Coconut
72541	485779.33	881440.03	N25°40'6.492"	W80°18'57.783"	8" Coconut
72542	485778.46	881448.92	N25°40'6.483"	W80°18'57.686"	8" Coconut
72543	485777.45	881455.35	N25°40'6.473"	W80°18'57.616"	10" Coconut
72544	485777.62	881463.16	N25°40'6.474"	W80°18'57.531"	8" Coconut
72545	485777.06	881469.98	N25°40'6.468"	W80°18'57.456"	8" Coconut
72546	485781.48	881477.26	N25°40'6.512"	W80°18'57.376"	8" Coconut
72547	485777.99	881486.53	N25°40'6.477"	W80°18'57.275"	8" Coconut
72548	485780.91	881487.24	N25°40'6.505"	W80°18'57.267"	8" Coconut
72573	485944.81	881208.95	N25°40'8.143"	W80°19'0.3"	12" Coconut
72574	485970.37	881210.90	N25°40'8.396"	W80°19'0.277"	14" Queen Palm
72575	485988.23	881205.38	N25°40'8.573"	W80°19'0.336"	28" Rose Apple



SURVEY BASELINE 'A' PROFILE
 (Intended Horizontal Display Scale: 1"=50')
 (Intended Vertical Display Scale: 1"=5')

SOUTH FLORIDA WATER MANAGEMENT DISTRICT
 INFRASTRUCTURE MANAGEMENT BUREAU – SURVEY AND MAPPING SECTION
 P. O. BOX 24680
 3301 GUN CLUB ROAD
 WEST PALM BEACH, FLORIDA 33416-4680

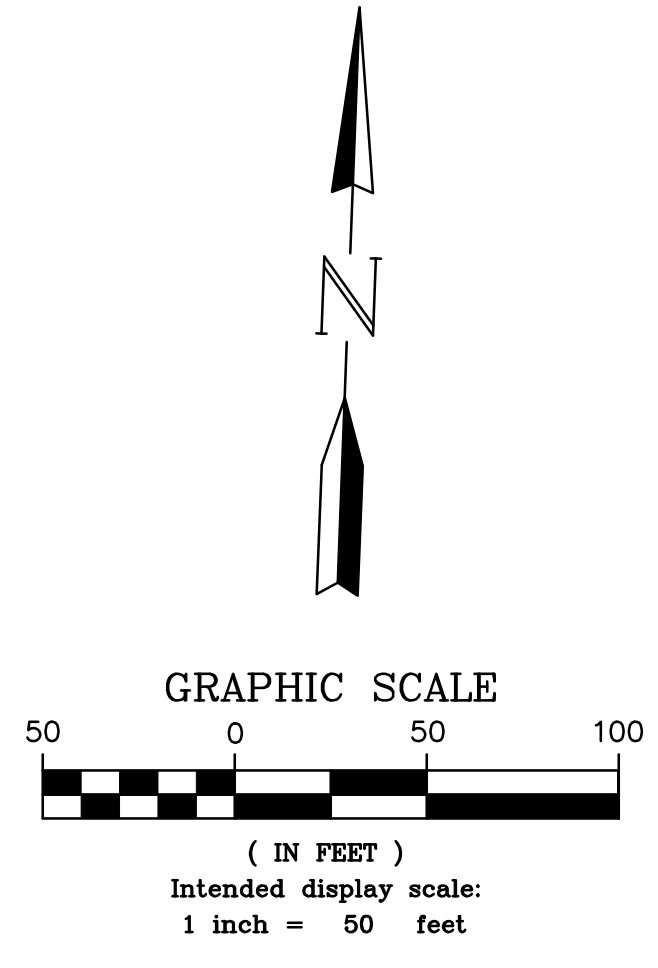
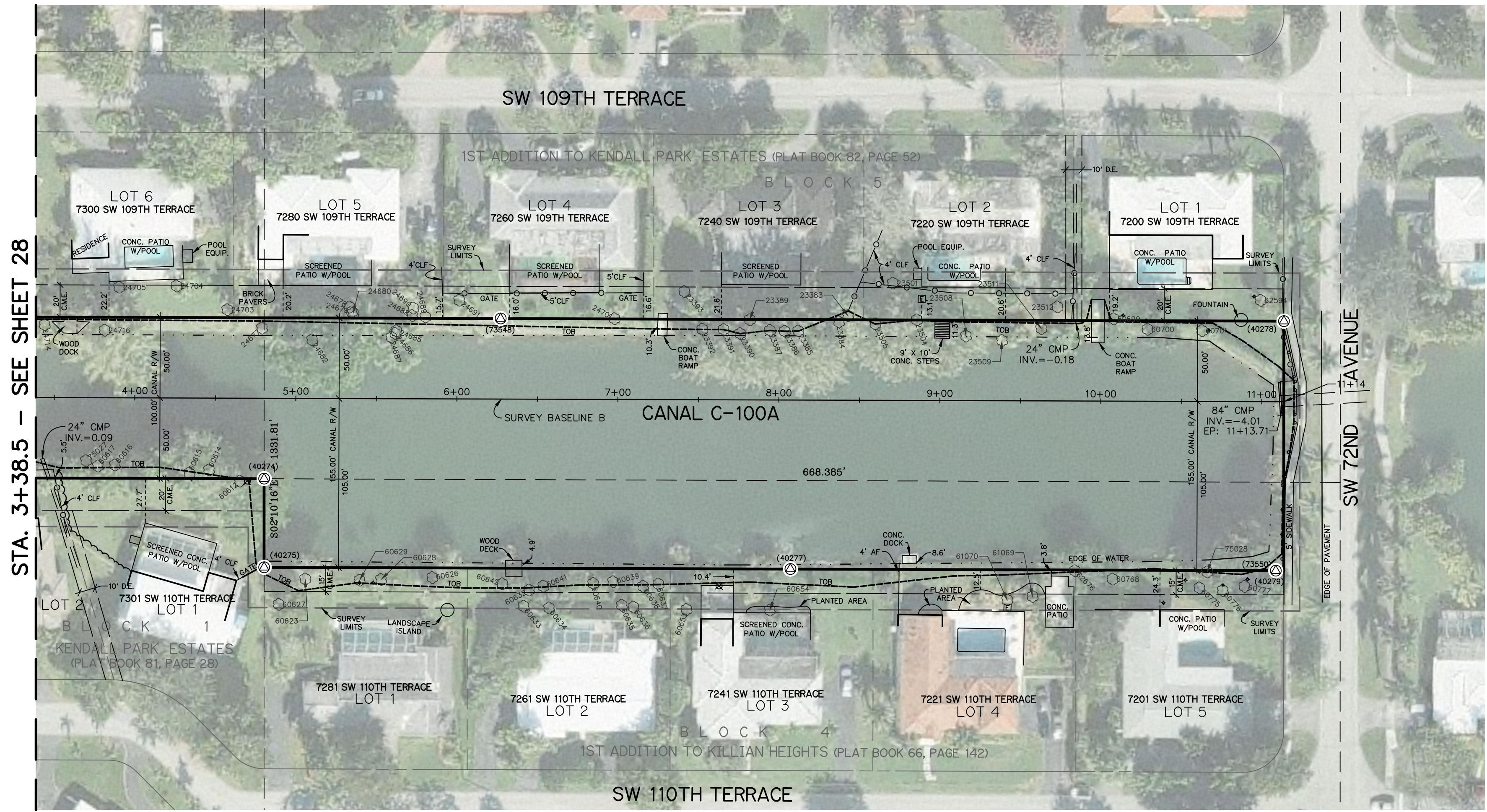
CANAL 100A BANK STABILIZATION
 BOUNDARY & TOPOGRAPHIC
 MIAMI-DADE, FLORIDA
 SECTIONS 10, 11, & 14
 TOWNSHIP 55 SOUTH
 RANGE 40 EAST

DRAWN: JHY CHECKED: GY DATE: 6/27/14 SCALE: AS SHOWN
 FIELD PERSONS: LUCAS YOUNG & BRIAN YANCY
 FIELD DATES: JUNE 18, 2014
 FIELD BOOKS: 1723, 1724, 1725, 1726, 1727, 1728, 1729, 1730, 1731, 1734, & 1736
 PAGE(S): 1-80, 1-78, 1-79, 1-79, 1-79, 1-17, 1-17, & 1-74
 DATA COLLECTOR FILE(S): MULTIPLE

GENERAL REVISIONS
 NO. DATE BY DESCRIPTION

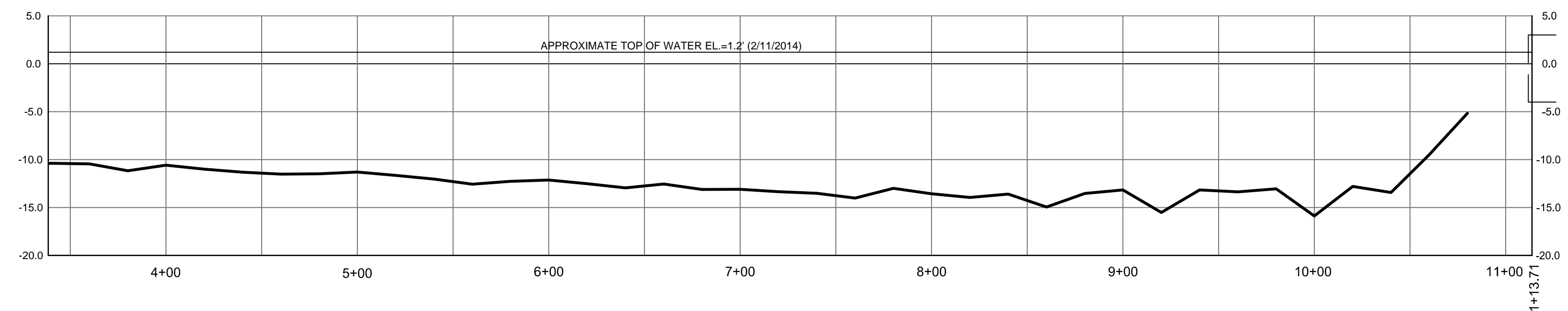
CADD FILE NO. 13-1009-06
 DRAWING NO. 27
 SHEET OF 68





STA. 3+38.5 - SEE SHEET 28

TREE INFORMATION					
Point Number	Northing	Eastng	Latitude	Longitude	Size & Description
23383	485937.77	882946.26	N25°40'7.984"	W80°18'41.312"	36" Schefflera
23384	485933.72	882940.79	N25°40'7.944"	W80°18'41.372"	24" Schefflera
23385	485927.10	882915.76	N25°40'7.88"	W80°18'41.646"	36" Australian Pine
23386	485926.63	882907.34	N25°40'7.876"	W80°18'41.738"	22" Australian Pine
23387	485926.79	882898.14	N25°40'7.878"	W80°18'41.839"	41" Australian Pine
23389	485932.94	882885.42	N25°40'7.939"	W80°18'41.978"	10" Eucalyptus sp
23390	485924.14	882879.73	N25°40'7.853"	W80°18'42.04"	36" Australian Pine
23391	485926.25	882869.43	N25°40'7.874"	W80°18'42.153"	7" Schefflera Impresia
23392	485925.86	882856.13	N25°40'7.871"	W80°18'42.298"	10" Large Leaf Calusia
23393	485948.86	882844.09	N25°40'8.099"	W80°18'42.428"	20" Trumpet Tree
23501	485959.08	882973.29	N25°40'8.194"	W80°18'41.016"	12" Royal Poinciana
23504	485936.83	882989.09	N25°40'7.973"	W80°18'40.844"	48" Australian Pine
23505	485933.30	882963.35	N25°40'7.939"	W80°18'41.126"	40" Australian Pine
23508	485927.98	883019.97	N25°40'7.883"	W80°18'40.507"	10" Bottle Brush
23509	485926.01	883042.43	N25°40'7.863"	W80°18'40.262"	8" Chinese Fan Palm
23511	485934.38	883066.49	N25°40'7.944"	W80°18'39.999"	4" Thatch Palm
23512	485948.17	883076.01	N25°40'8.08"	W80°18'39.894"	20" Seagrape
24677	485916.19	882582.82	N25°40'7.789"	W80°18'45.286"	9" Queen Palm
24678	485931.34	882636.64	N25°40'7.936"	W80°18'44.697"	8" Queen Palm
24679	485928.44	882638.16	N25°40'7.908"	W80°18'44.68"	12" Queen Palm
24680	485927.57	882639.04	N25°40'7.899"	W80°18'44.671"	14" Queen Palm
24682	485910.09	882614.23	N25°40'7.727"	W80°18'44.943"	48" Banyan
24685	485917.69	882666.34	N25°40'7.8"	W80°18'44.373"	10" Queen Palm
24686	485916.04	882665.57	N25°40'7.783"	W80°18'44.381"	8" Queen Palm
24687	485913.53	882663.41	N25°40'7.759"	W80°18'44.405"	12" Banyan
24688	485927.56	882675.74	N25°40'7.897"	W80°18'44.27"	10" Coconut
24689	485927.01	882684.01	N25°40'7.891"	W80°18'44.179"	10" Coconut
24690	485932.20	882676.21	N25°40'7.943"	W80°18'44.264"	4" Star Fruit
24691	485938.16	882704.58	N25°40'8"	W80°18'43.954"	16" Queen Palm
24701	485930.44	882801.39	N25°40'7.919"	W80°18'42.896"	4" Foxtail
24703	485926.83	882560.82	N25°40'7.896"	W80°18'45.526"	8" Coconut
24704	485940.31	882528.77	N25°40'8.031"	W80°18'45.875"	5" Montgomery
24705	485938.16	882493.21	N25°40'8.011"	W80°18'46.264"	5" Montgomery
24714	485913.08	882447.91	N25°40'7.765"	W80°18'46.76"	8" Coconut
24716	485911.14	882485.22	N25°40'7.744"	W80°18'46.353"	48" Australian Pine
60612	485820.73	882572.66	N25°40'6.844"	W80°18'45.402"	24" Royal Poinciana
60614	485826.92	882553.28	N25°40'6.906"	W80°18'45.614"	12" Chinese Fan Palm
60615	485824.48	882541.17	N25°40'6.883"	W80°18'45.746"	72" Banyan
60616	485827.75	882494.75	N25°40'6.918"	W80°18'46.253"	24" Bishopwood
60617	485826.72	882484.25	N25°40'6.908"	W80°18'46.368"	24" Bishopwood
60623	485761.50	882615.59	N25°40'6.255"	W80°18'44.936"	14" Bottle Brush
60626	485765.39	882694.47	N25°40'6.29"	W80°18'44.074"	12" Bottle Brush
60627	485745.14	882599.74	N25°40'6.094"	W80°18'45.111"	14" Black Olive
60628	485763.04	882662.67	N25°40'6.268"	W80°18'44.422"	4" Alexander
60629	485762.04	882649.38	N25°40'6.259"	W80°18'44.567"	4" Alexander
60632	485759.97	882754.77	N25°40'6.233"	W80°18'43.415"	4" Wax Myrtle
60633	485749.91	882751.82	N25°40'6.132"	W80°18'43.448"	10" Queen Palm
60634	485749.31	882767.62	N25°40'6.127"	W80°18'43.276"	12" Queen Palm
60635	485752.71	882812.69	N25°40'6.158"	W80°18'42.783"	12" Queen Palm
60636	485751.81	882819.98	N25°40'6.149"	W80°18'42.703"	12" Queen Palm
60637	485766.72	882834.96	N25°40'6.296"	W80°18'42.539"	4" Wax Myrtle
60638	485764.94	882825.45	N25°40'6.278"	W80°18'42.643"	4" Wax Myrtle
60639	485767.09	882806.78	N25°40'6.301"	W80°18'42.847"	4" Wax Myrtle
60640	485765.53	882794.48	N25°40'6.286"	W80°18'42.981"	4" Wax Myrtle
60641	485762.67	882763.54	N25°40'6.259"	W80°18'43.319"	4" Wax Myrtle
60642	485763.23	882738.03	N25°40'6.266"	W80°18'43.598"	4" Wax Myrtle
60653	485751.57	882852.95	N25°40'6.145"	W80°18'42.343"	12" Queen Palm
60654	485753.19	882904.72	N25°40'6.158"	W80°18'41.777"	8" Alexander
60699	485942.13	883111.21	N25°40'8.019"	W80°18'39.509"	24" Royal Poinciana
60700	485936.45	883132.49	N25°40'7.961"	W80°18'39.277"	14" Lead Tree
60701	485936.88	883166.32	N25°40'7.964"	W80°18'38.907"	6" Mango
60768	485780.55	883116.70	N25°40'6.418"	W80°18'39.459"	12" Royal Poinciana
60775	485777.18	883170.82	N25°40'6.382"	W80°18'38.867"	9" Star Fruit
60776	485776.10	883185.38	N25°40'6.37"	W80°18'38.708"	12" Live Oak
60777	485779.11	883198.74	N25°40'6.4"	W80°18'38.562"	16" Avacado
61069	485767.89	883067.46	N25°40'6.295"	W80°18'39.998"	8" Coconut
61070	485765.12	883051.79	N25°40'6.269"	W80°18'40.169"	8" Coconut
62594	485957.10	883201.99	N25°40'8.162"	W80°18'38.516"	12" Sappodilla
62676	485784.84	883093.16	N25°40'6.462"	W80°18'39.716"	24" Banyan
75027	485829.70	882476.73	N25°40'6.938"	W80°18'46.45"	8" Chinese Fan Palm
75028	485787.24	883175.28	N25°40'6.481"	W80°18'38.818"	36" Seagrape



SURVEY BASELINE 'B' PROFILE
(Intended Horizontal Display Scale: 1"=50')
(Intended Vertical Display Scale: 1"=5')

SOUTH FLORIDA WATER MANAGEMENT DISTRICT
 INFRASTRUCTURE MANAGEMENT BUREAU - SURVEY AND MAPPING SECTION
 P. O. BOX 24680
 3301 GUN CLUB ROAD
 WEST PALM BEACH, FLORIDA 33416-4680

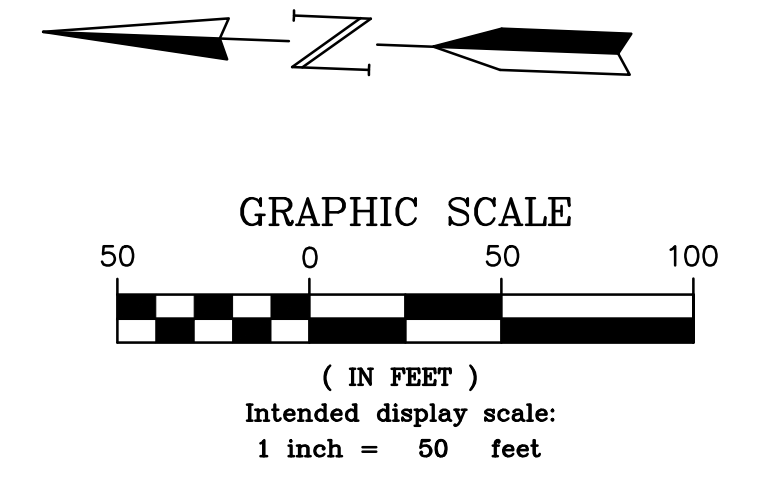
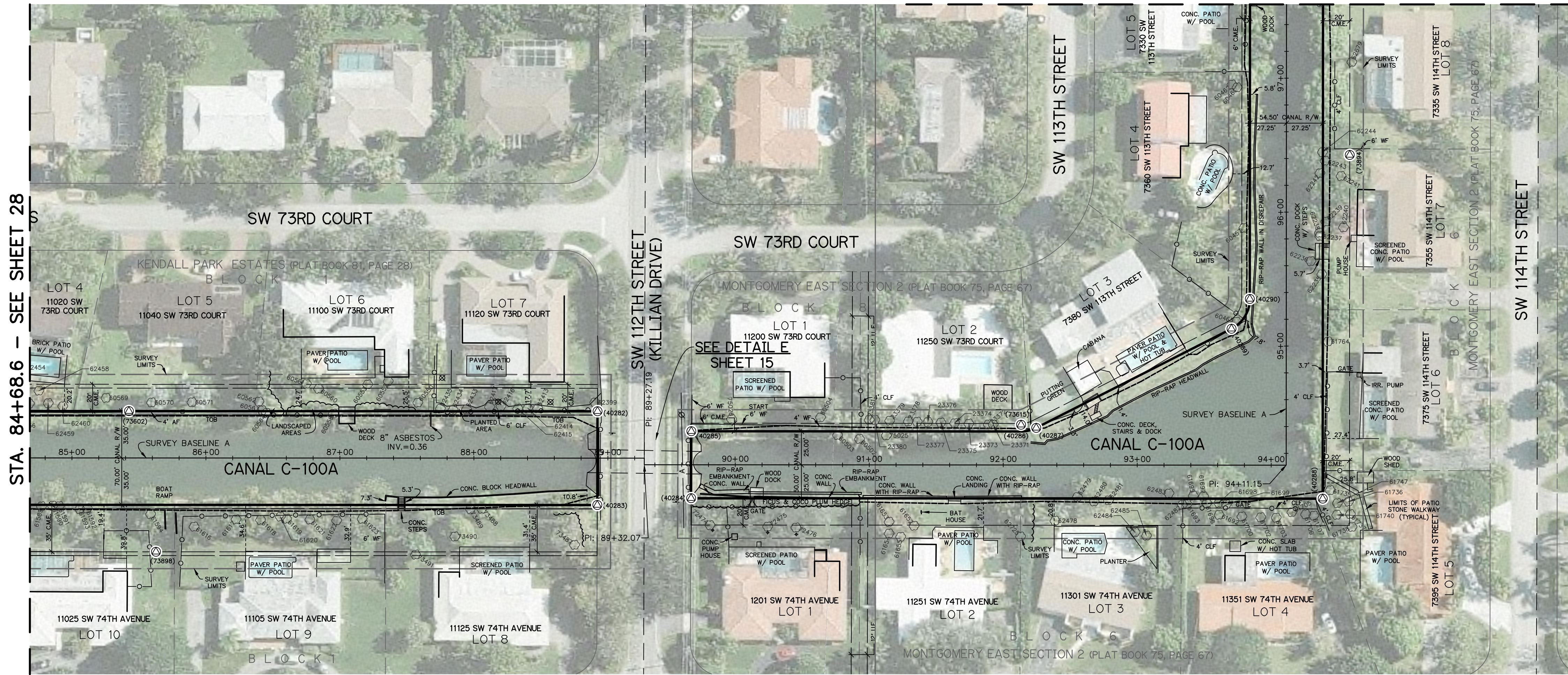
CANAL 100A BANK STABILIZATION
 BOUNDARY & TOPOGRAPHIC
 MIAMI-DADE, FLORIDA
 SECTIONS 10, 11, & 14
 TOWNSHIP 55 SOUTH
 RANGE 40 EAST

DRAWN: JHY CHECKED: GY DATE: 6/27/14 SCALE: AS SHOWN
 FIELD PERSONS: LUCAS YOUNG & BRIAN YANCY
 FIELD DATES: JUNE 18, 2014
 FIELD BOOKS: 1723, 1724, 1725, 1726, 1727, 1728, & 1729
 PAGES: 1-80, 1-78, 1-79, 1-79, 1-79, 1-17, & 1-74
 DATA COLLECTOR FILE(S): MULTIPLE

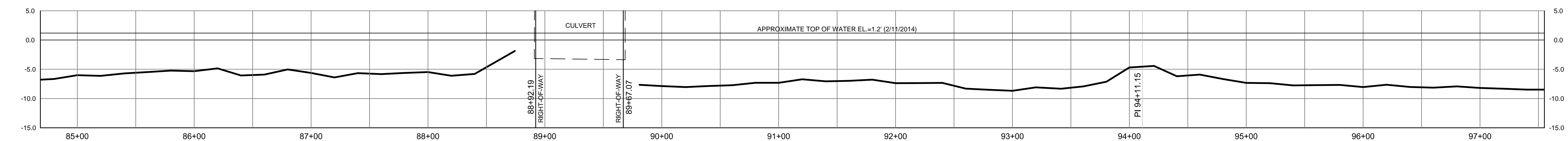
CADD FILE NO. 13-1009-06
 DRAWING NO. 29
 SHEET OF 68



STA. 97+55.1 - SEE SHEET 31



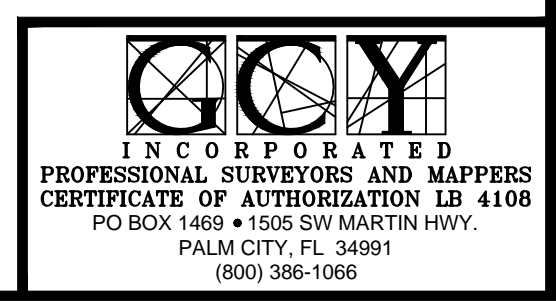
FOR TREE INFORMATION
SEE SHEET 67 & SHEET 68



SURVEY BASELINE 'A' PROFILE
(Intended Horizontal Display Scale: 1"=50')
(Intended Vertical Display Scale: 1"=5')

STA. 84+68.6 - SEE SHEET 28

<p>CANAL 100A BANK STABILIZATION BOUNDARY & TOPOGRAPHIC MIAMI-DADE, FLORIDA SECTIONS 10, 11, & 14 TOWNSHIP 55 SOUTH RANGE 40 EAST</p>	<p>CADD FILE NO. 13-1009-06 DRAWING NO. _____ SHEET 30 OF 68</p>									
<p>DRIVING: JHY CHECKED: GY DWG. DATE: 6/27/14 SCALE: AS SHOWN FIELD PERSONS: LUCAS YOUNG & BRIAN YANCY FIELD DATES: JUNE 18, 2014 FIELD BOOKS: 1723, 1724, 1725, 1726, 1728, 1729, 1731, 1734, & 1736 PAGE(S): 1-80, 1-78, 1-79, 1-79, 1-17, & 1-74 DATA COLLECTOR FILE(S): MULTIPLE</p>	<p>SOUTH FLORIDA WATER MANAGEMENT DISTRICT INFRASTRUCTURE MANAGEMENT BUREAU - SURVEY AND MAPPING SECTION P.O. BOX 24680 3301 GUN CLUB ROAD WEST PALM BEACH, FLORIDA 33416-4680</p>									
<p>GENERAL REVISIONS</p> <table border="1"> <tr> <th>NO.</th> <th>DATE</th> <th>DESCRIPTION</th> </tr> <tr> <td> </td> <td> </td> <td> </td> </tr> <tr> <td> </td> <td> </td> <td> </td> </tr> </table>	NO.	DATE	DESCRIPTION							<p>DATE: 6-28-14 DRAWN: JHY CHECKED: GY</p>
NO.	DATE	DESCRIPTION								



SHEET 23 - TREE INFORMATION table with columns: Point Number, Northing, Easting, Latitude, Longitude, Size & Description. Contains 7345 rows of tree data.

(continued above right)

SHEET 23 - TREE INFORMATION (continued) table with columns: Point Number, Northing, Easting, Latitude, Longitude, Size & Description. Contains 7345 rows of tree data.

(continued above right)

SHEET 25 - TREE INFORMATION (continued) table with columns: Point Number, Northing, Easting, Latitude, Longitude, Size & Description. Contains 7345 rows of tree data.

(continued above right)

SHEET 26 - TREE INFORMATION (continued) table with columns: Point Number, Northing, Easting, Latitude, Longitude, Size & Description. Contains 7345 rows of tree data.

(SEE SHEET 68)

Vertical title block on the right side of the page containing project information, scale, date, and drawing number.