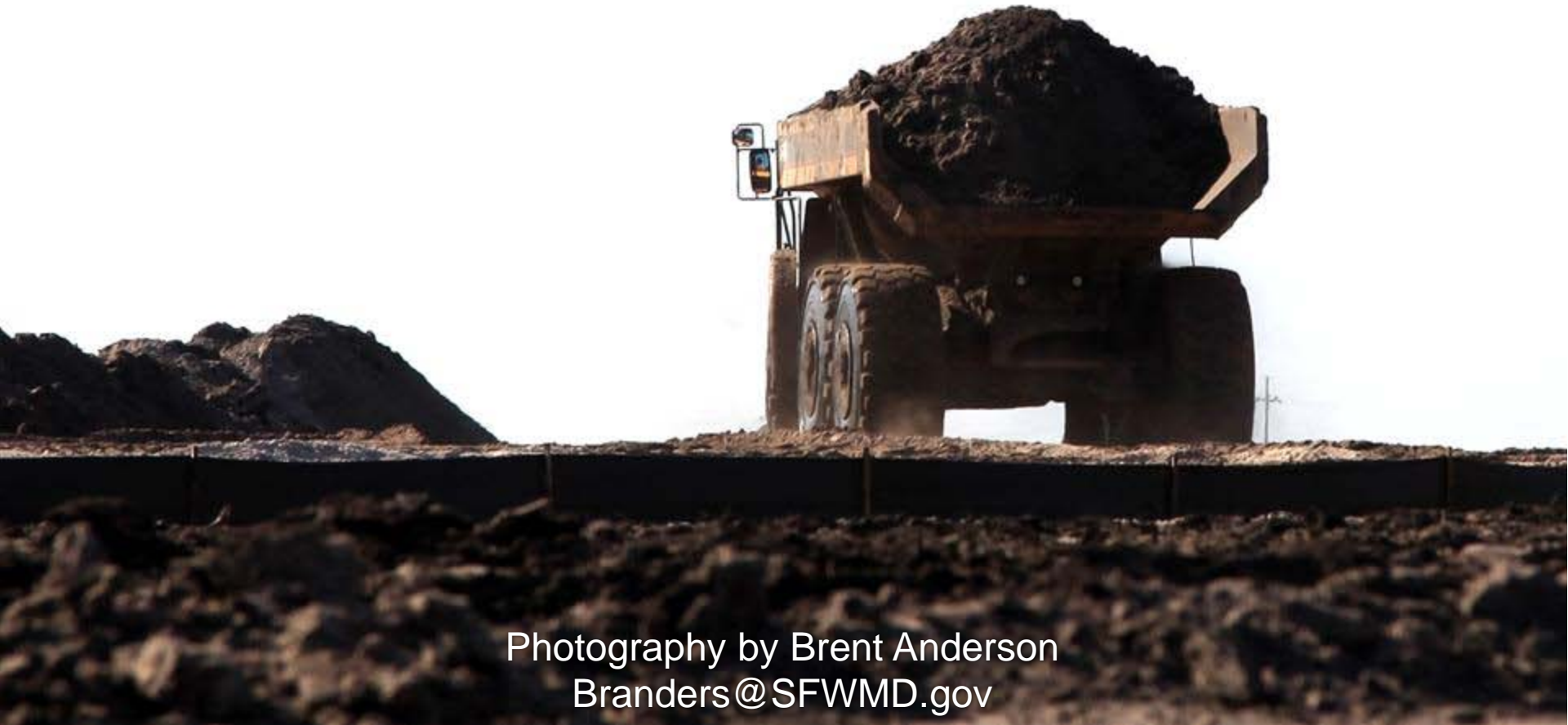


# January 2012 Kissimmee Basin Environmental and Restoration Features



Photography by Brent Anderson  
Branders@SFWMD.gov



**Remnant channel of the original Kissimmee River (Caracara Run)**

Hwy 98

To Okeechobee →

**C-38 canal in Pool D**

**PHASE III/III CONSTRUCTION AREA**

**Temporary roads for construction access**

**Partially re-carved river channel**

**Flow**

**NORTH**

December 19, 2011

Phase III - Contract 10A river channel re carve construction. Image from December 2011



January 17, 2012

Phase III - Contract 10A river channel recarve construction. Image from January 2012



January 17, 2012

Phase III - Contract 10A river channel recarve construction. Image from January 2012



January 17, 2012

Phase III - Contract 10A river recarve construction.



1/17/2019

On the north side of HW98 the Phase II contract 10A recarve area is prepped for excavating, but was put on hold briefly when burrowing owls were discovered in the area. The permits have been issued and work has resumed.



A Burrowing Owl (*Athene cunicularia*) stands her ground in the Phase II contract 10A river channel recarve area. Contract 10B work was on hold briefly while biologists determined if owls were currently nesting



January 17, 2011

Contractors drained the partial existing remnant run in order to excavate in the Phase II contract 10A river channel recarve area. Wading birds take advantage of the available prey that is exposed as the water drains.





White Ibis (*Eudocimus albus*), great egrets (*Ardea alba*), snowy egrets (*Egretta thula*) and wood storks (*Mycteria americana*) forage in the Phase II contract 10A river channel recarve area.



White Ibis (*Eudocimus albus*) forage for stranded prey in the Phase II contract 10A river channel recarve area



A great blue heron (*Ardea herodias*) forages for stranded prey in the Phase II contract 10A river channel recarve area



This crayfish was unlucky today



Wood storks take a break from foraging in the Phase II river channel recarve area.



Moving soil in the Phase III contract 10A river channel re carve area



January 17, 2012

Moving soil in the Phase III contract 10A river channel re carve area



January 17, 2012

Moving soil in the Phase III contract 10A river channel recare area





January 17, 2012

Moving soil in the Phase III contract 10A river channel recarve area



January 17, 2012

Moving soil in the Phase III contract 10A river channel recarve area



January 17, 2012

Moving soil in the Phase III contract 10A river channel recarve area



Avian scientist Mike Cheek conducting early morning songbird surveys in the Phase II/III restoration area



Bald cypress trees (*Taxodium distichum*) hang on yet another year as they wait patiently for Phase II/III backfill when cattle pastures will finally be returned to wetlands after 50 years of channelization.



January 19, 2012

The Phase I restoration area floodplain continues to hold water well into the dry season. Recent releases in the upper chain of lakes maintained stages in the floodplain wetlands.



Yellowlegs (*Tringa melanoleuca*) in the Phase I restoration area.



Blue-winged teal (*Anas discors*) in the Phase I restoration area.





American coot (*Fulica americana*) in the Phase I restoration area.



January 17, 2012

Phase I restoration area floodplain.