

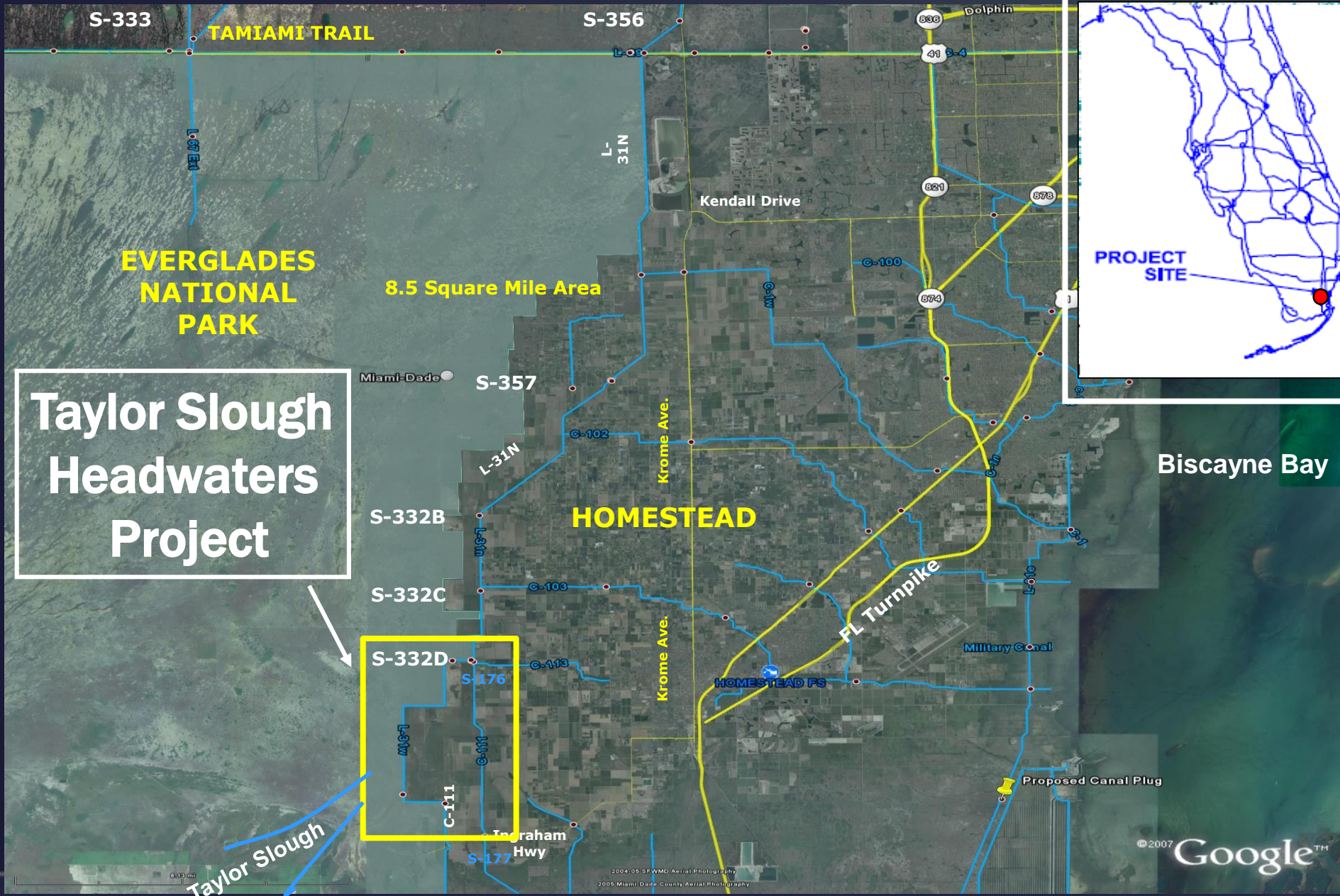
Taylor Slough Headwaters Project Update



Technical Oversight Committee
May 23, 2017

Stuart Van Horn, P.E.

Water Quality Bureau Chief

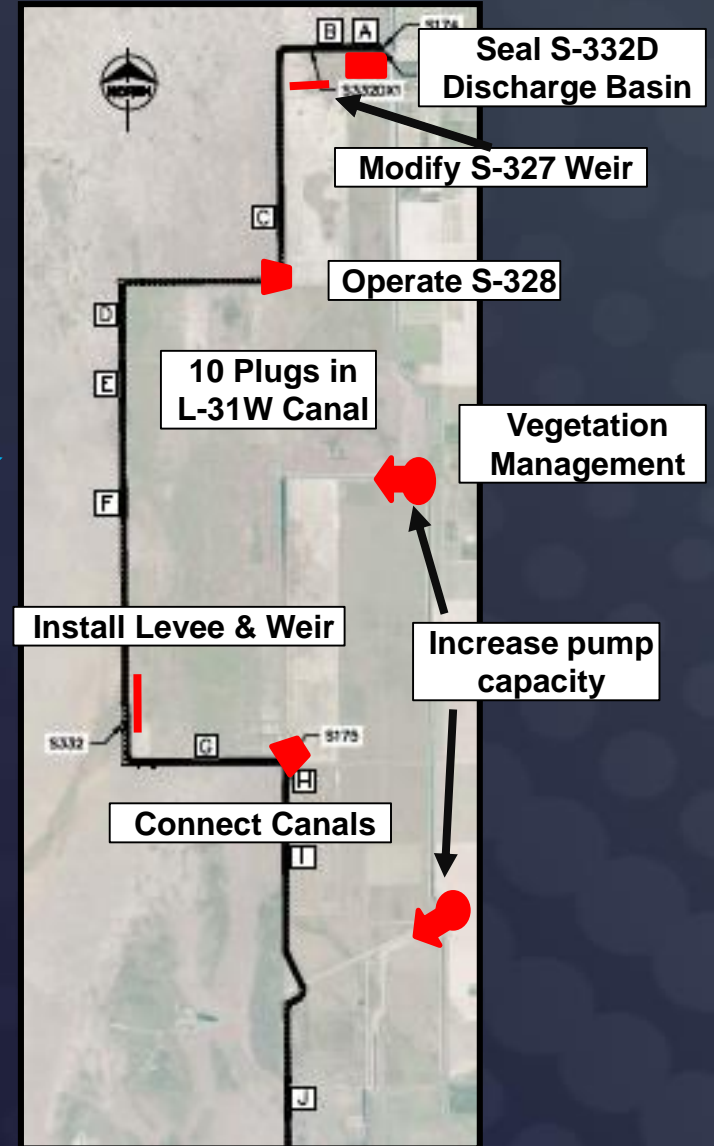
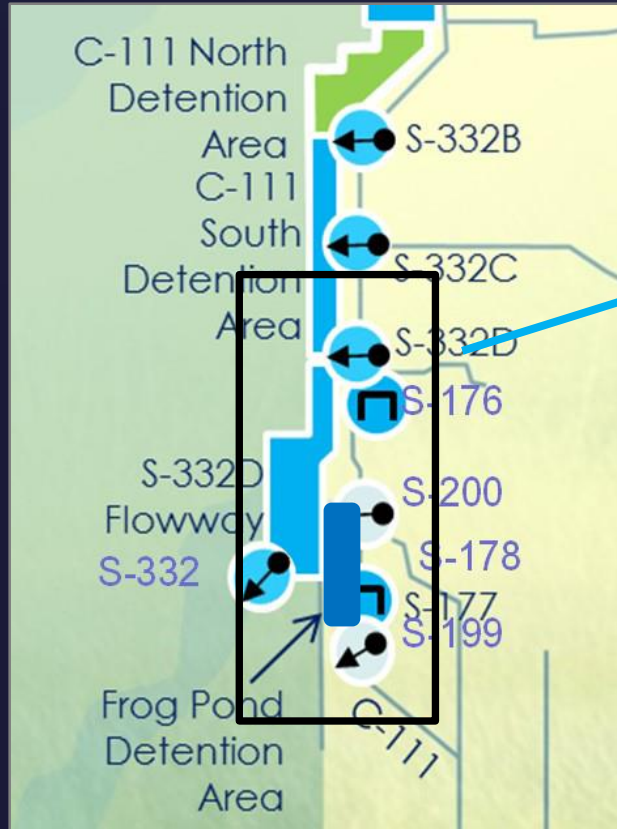


**Taylor Slough
Headwaters
Project**

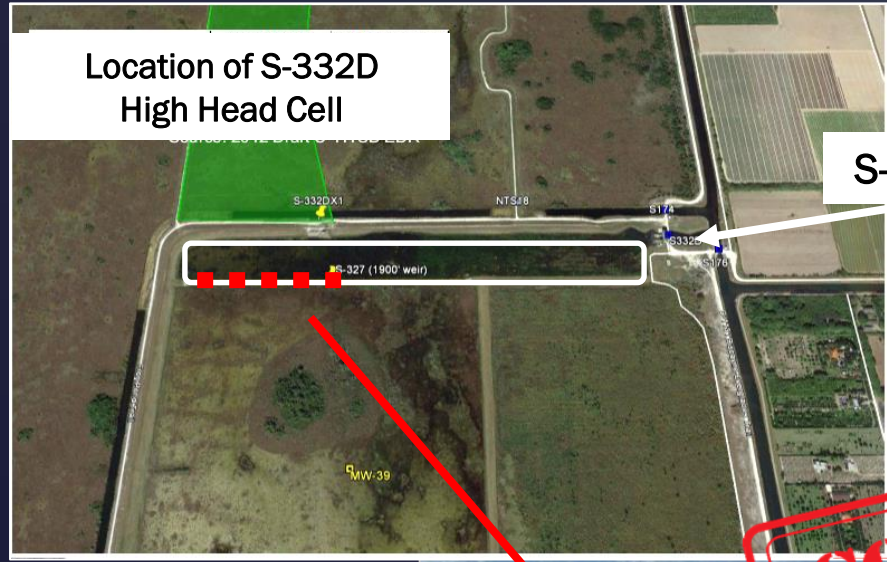
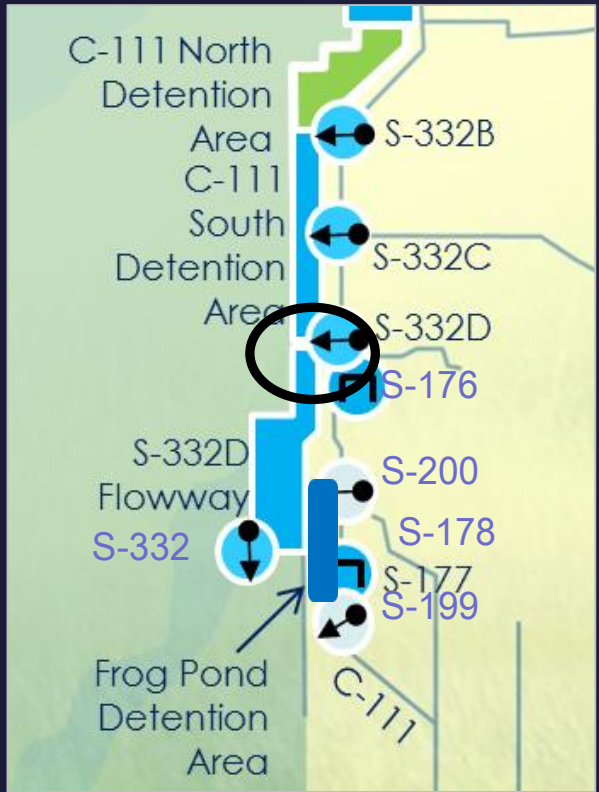
S-332D

Taylor Slough

Project Features to Move Water South to Florida Bay September 2016



Modify S-332D High Head Cell Weir

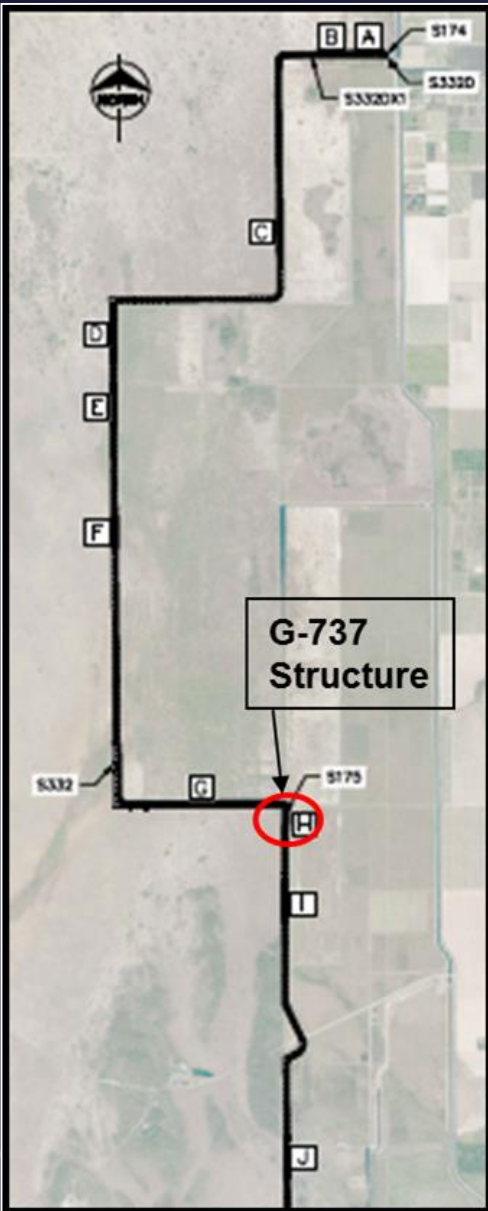


COMPLETED



S-327 High Head Weir, looking west towards ENP, after partial removal

Connect Canals: G-737 Structure



Scraping to Cap Rock and Excavating Sump Area

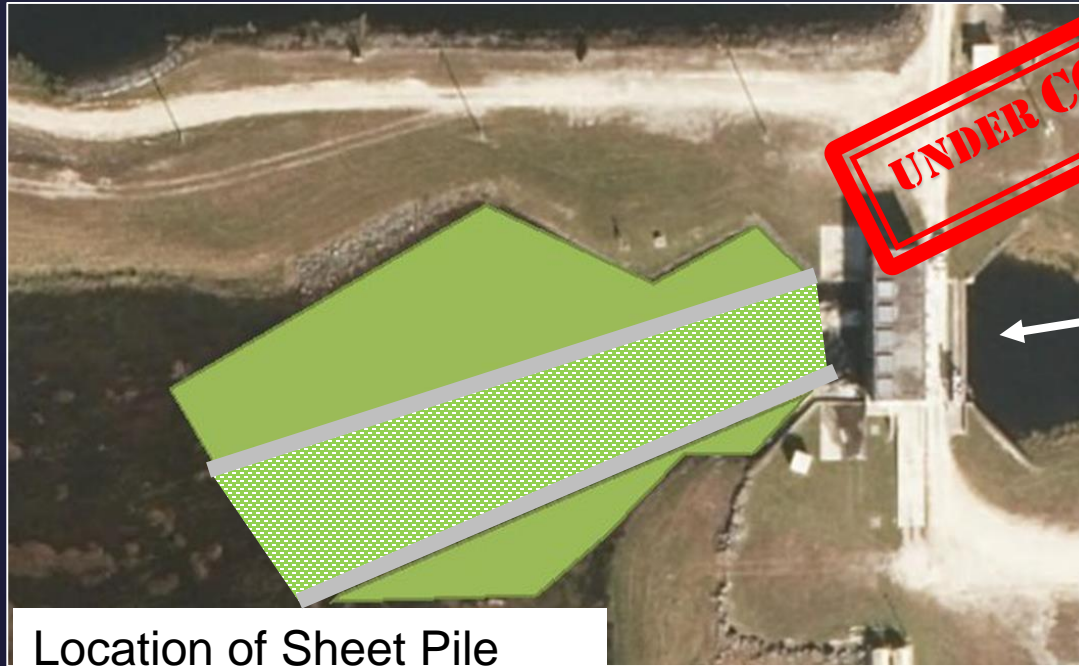
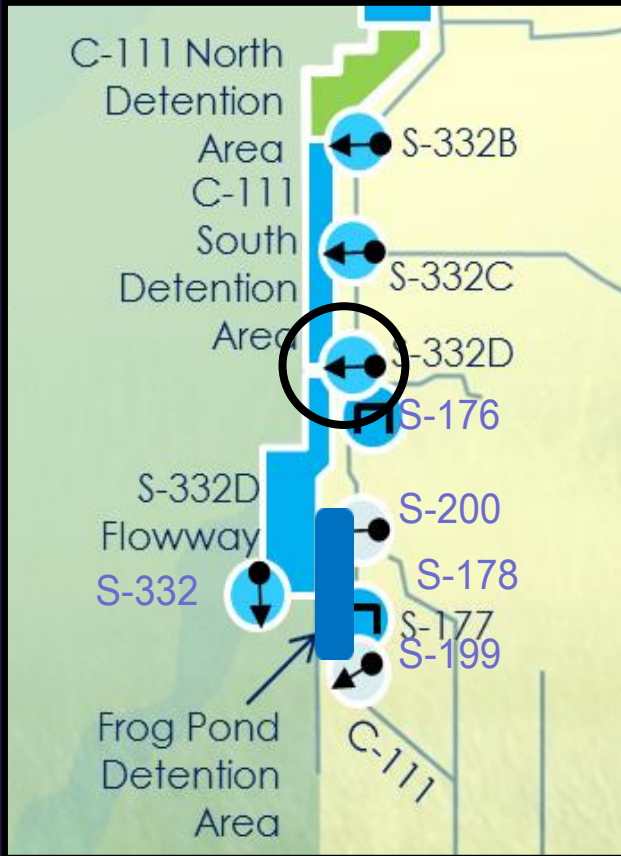


Sump and Culvert Install



Culverts from C-200 to L-31W Canal

S-332D Discharge Basin Sealing



Location of Sheet Pile and Tremie Concrete to Seal Discharge Basin



S-332D Pump Station

L-31W Canal Levee and Weir

UNDER CONSTRUCTION



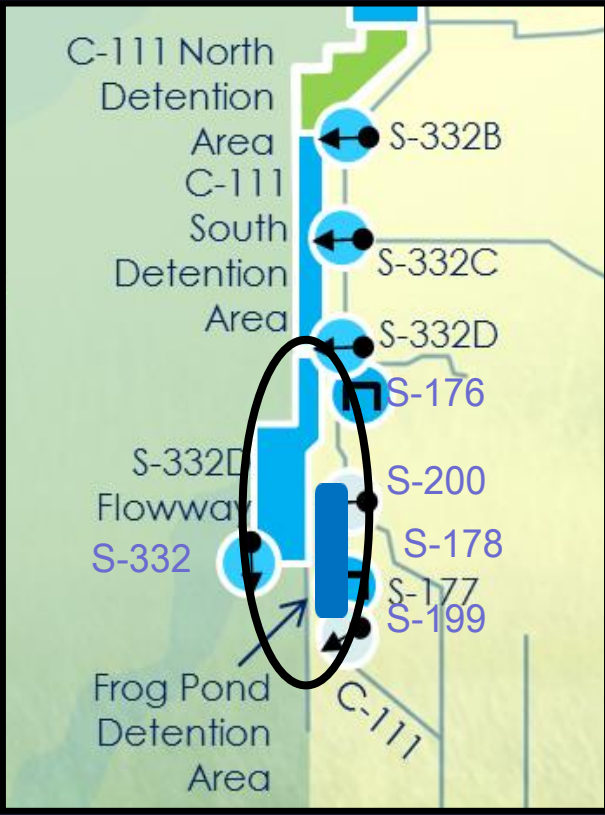
L-31W Canal and Levee



Levee and Weir location

Ten Plugs in L-31W Canal

UNDER CONSTRUCTION



Plug G



Plug G

Monitoring Considerations



Headwater of S-328 culverts
looking toward
Everglades National Park



S-328 Sump



Tailwater of G-737 culverts
looking south to S-175



Taylor Slough

L-31W

S-332D

S-328

S-200

C-111

G-737

L-31W

2014 Miami-Dade County Aerial Photography
2014 Miami-Dade County Aerial Photography

Questions?