

WHAT CAN YOU DO?

- Look at the vista of constructed wetlands.
- Bring your bicycle and ride on more than six miles of open area while observing changing habitat types and a variety of birds.
- Bring your fishing rod and try to catch largemouth bass and other fish on the outer canal.
- Hike for several miles on the levees and observe emergent marsh and submerged aquatic vegetation habitats.
- Bring your binoculars to view a variety of bird species, and a camera to capture them.
- The area is designated as a Great Florida Birding Trail.

WHAT DO YOU SEE?

Around this site, you will see how an agricultural area was converted into a vast filtering marsh. You will see plants thriving from excess nutrients in the water, which they then store in the soil.

A variety of wading birds, ducks and birds of prey, including ospreys and hawks, can be viewed in the marsh. Look for fish in the ospreys' talons.

You will see various structures around the area. Some are collecting scientific data, and some are water flow structures. Automatic sampling equipment is installed at pump stations and other structures for the purpose of monitoring water quality.

Scientists and water managers are also collecting data about water quality and working to keep water flows moving at the best rates for phosphorus removal.

The area is open Friday through Monday and is closed the rest of the week for resource management.

VISITOR GUIDELINES

- Stay on designated trails.
- This is a natural area. Trash cans are not provided, so take out what you bring in. Please do not litter.
- Florida Fish and Wildlife Conservation Commission rules and regulations apply. Please report violations to the Florida Fish and Wildlife Conservation Commission at 1-800-404-FWCC (3922).
- To report rule violations or suspicious behavior, contact 1-800-432-2045, security extension 6449.
- For emergencies, please call 911.

Stormwater Treatment Area 1 West Public Use Facility is off CR 880 three miles west of SR 80 or about 16 miles east of Belle Glade.

For more information, call our recreation hotline at 1-866-433-6312 or visit our web site at www.sfwmd.gov, and click the "recreation" link.

Enjoy Your Visit



JR 05/16/08



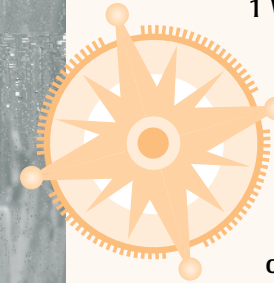
sfwmd.gov

South Florida Water Management District
3301 Gun Club Road
West Palm Beach, Florida 33406
561-686-8800 • FL WATS 1-800-432-2045
www.sfwmd.gov

MAILING ADDRESS: P.O. Box 24680
West Palm Beach, FL 33416-4680

STORMWATER TREATMENT AREA 1 WEST

Stormwater Treatment Area (STA) 1 West is a 6,670-acre constructed wetland designed to reduce phosphorus entering the Everglades. The plants within this constructed wetland are consuming phosphorus as they grow, eventually depositing much of the nutrient in the soil. For many decades this land was used



for agriculture. Phosphorus from fertilizers and organic soils was carried into the Everglades by stormwater runoff, causing an undesirable change in the Everglades ecosystem. Too much of this essential nutrient has allowed cattail to invade the River of Grass, reducing the coverage of sawgrass and open water sloughs. Although cattail absorb large quantities of phosphorus, these plants do not provide the right habitat for many of the plant and animal species that are unique to the Everglades.

Come
out
and
play



STA 1 West is one of six STAs mandated by the State of Florida's Everglades Forever Act, with a primary goal of reducing the amount of phosphorus that reaches the Everglades ecosystem.

Numerous levees, water control structures and monitoring equipment within the STA are critical to the success of the phosphorus control program. Any damage to these facilities because of public access could restrict the continued public use of the STA.



Permitted Uses







You are visiting a natural area.
 There are few, if any, amenities, such as shelters and potable water.
 For your own comfort, please plan ahead.
 Please do not litter. If you bring it in, bring it out.

- Hiking and Biking Trail
- ☆ Access Point
- Project Boundary

0 0.5 1



Miles

Stormwater Treatment Area 1 West - Recreational Opportunities
 (With 2006 1/2 Meter Resolution Aerial Express 'True Color' Aerial Photography)