

HISTORY

Originally a working cattle ranch owned by the McArthur Dairy Company, much of the area included in Hickory Hammock was separated from the floodplain of the Kissimmee River by a series of berms and dikes. These dikes and fences have now been removed to allow free access to the river floodplain. A two-story barn built in 1946 and outbuildings constructed many years ago are the only signs remaining of the cattle ranch that once graced the area. These are now part of the Hickory Hammock Equestrian Center and campground.

Wildlife commonly seen in the area include deer, turkey, hogs, quail, barn owl, eastern diamondback rattlesnakes, pygmy rattlesnakes, gopher tortoise, sand skinks, and many species of birds including crested caracara, sand hill cranes in the upland area and wading birds in the marshes.

RESOURCE MANAGEMENT

Land management practices such as prescribed fire, mechanical vegetation management (bush hogging and shredding), and herbiciding of exotic vegetation keeps this area close to its natural state.

ACCESS

- Enter by hiking, bicycling or horse.
- Access points on the east side of Hwy. 98, which runs between Sebring and Okeechobee:
 - Equestrian access is at the equestrian center at the end of McArthur Road, four miles north of the main Hickory Hammock trailhead.
 - Main trailhead at Hickory Hammock is eight miles southeast of Lorida and about one-half mile northwest of the Istokpoga Canal. (18 miles south of Sebring and 33 miles north of Okeechobee on Hwy. 98.)

RECREATIONAL USES

Horseback riding, hiking and cycling are popular at Hickory Hammock. The equestrian center has stalls, picnic shelters and campsites, as well as 10 miles of marked equestrian trails.

Hikers enjoy a section of the Florida National Scenic Trail that winds for 11 miles through the properties, with several primitive campsites along the trail. Bicycling enthusiasts will enjoy riding on a two-mile section of the old Sebring Grade.

The Istokpoga Canal Boat Ramp Area is the newest of South Florida Water Management District maintained sites offering recreational access to the Kissimmee River. The 18-acre boat ramp area also offers trail access to the Hickory Hammock Wildlife Management Area. The Istokpoga Canal Boat Ramp Area is open 24 hours a day, seven days a week.

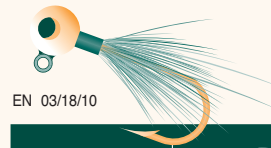
Other uses are airboating, boating, canoeing, fishing, hunting and kayaking. A no-cost special use permit is required for camping and for equestrian uses.

For information on hunting, please refer to the Florida Fish and Wildlife Conservation Commission's Hickory Hammock Wildlife Management Area brochure or visit the website at <http://myfwc.com/hunting/>.

For general use rules and regulations governing these properties, please visit our Recreational Guide, or to see the South Florida Water Management District's 40E-7 Public Use Rules, visit our web site at: www.sfwmd.gov/recreation.

For More Information: Okeechobee Service Center 1-800-250-4200 or (863) 462-5260.

Enjoy Your Visit



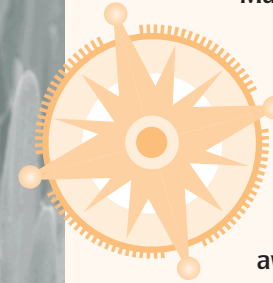
EN 03/18/10



sfwmd.gov
 South Florida Water Management District
 3301 Gun Club Road
 West Palm Beach, Florida 33406
 561-686-8800 • 1-800-432-2045
www.sfwmd.gov

MAILING ADDRESS: P.O. Box 24680
 West Palm Beach, FL 33416-4680

HICKORY HAMMOCK MANAGEMENT AREA



Majestic live oaks on either side of the hiking trail offer a welcome as you enter the vintage panorama of Hickory Hammock. Marshes, patches of scrub and oak, hickory and cabbage palm hammocks await exploration. Remnants of the Istokpoga Slough provide cool relief to the landscape.

Mostly river floodplain marsh, the area provides 4,777 acres of opportunities to hike, bird watch, ride horses, hunt, fish and just relax. An on-site equestrian center is available to horse riders and other large groups for organized activities that require a large amount of space.

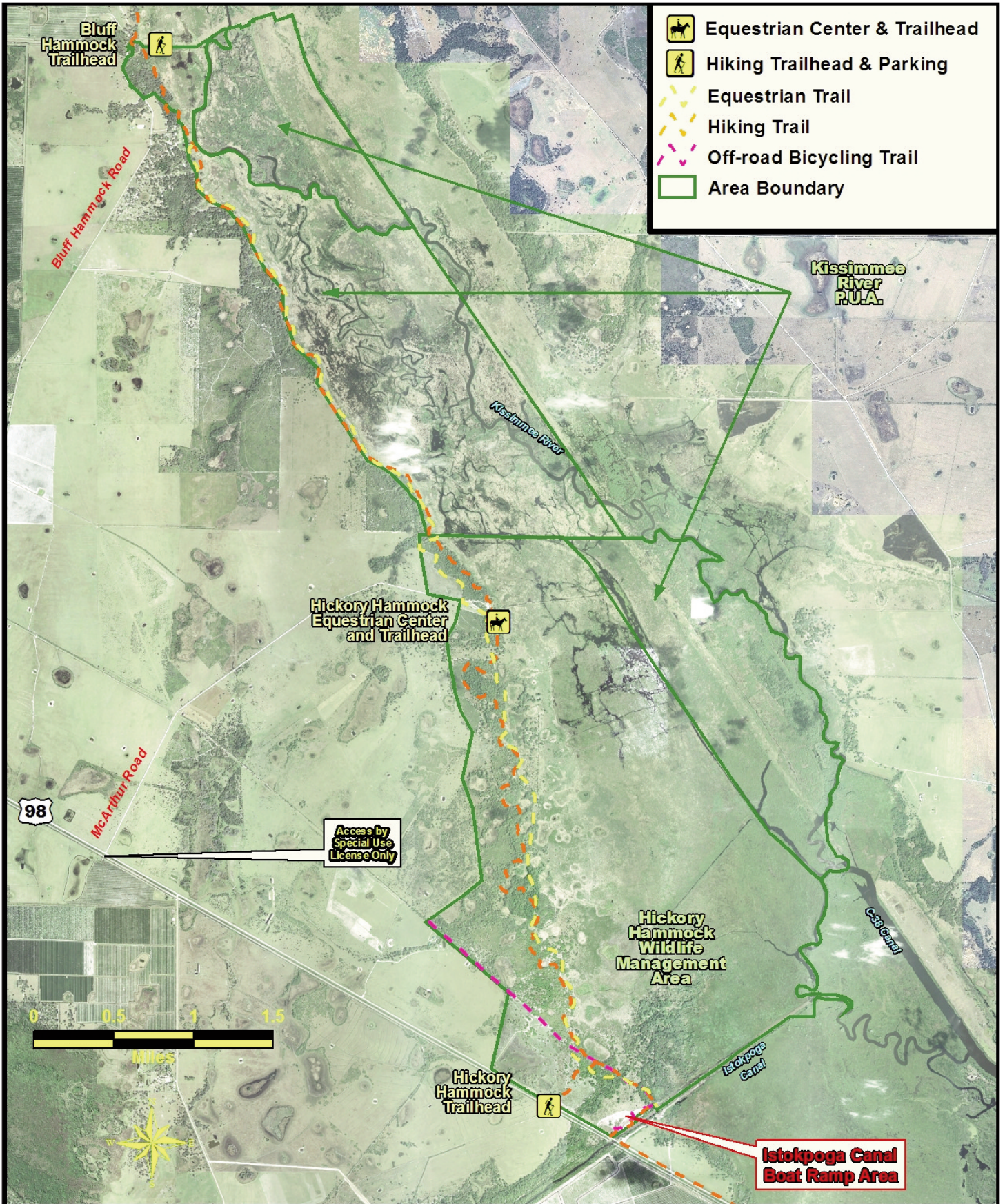
**Come
out
and
play**

The Hickory Hammock Management Area is located south of Bluff Hammock Management Unit, in Okeechobee and Highlands counties.



The areas are open year-around for a variety of public uses.

Hickory Hammock is a stop along the Great Florida Birding Trail and the Everglades Trail, as well as existing beside the Florida Cracker Trail.



-  Equestrian Center & Trailhead
-  Hiking Trailhead & Parking
-  Equestrian Trail
-  Hiking Trail
-  Off-road Bicycling Trail
-  Area Boundary

Kissimmee River - Pool C (West) - Trail System and Access
 (With 2008 Highlands County 1/2 Foot Resolution Natural Color Aerial Photography)