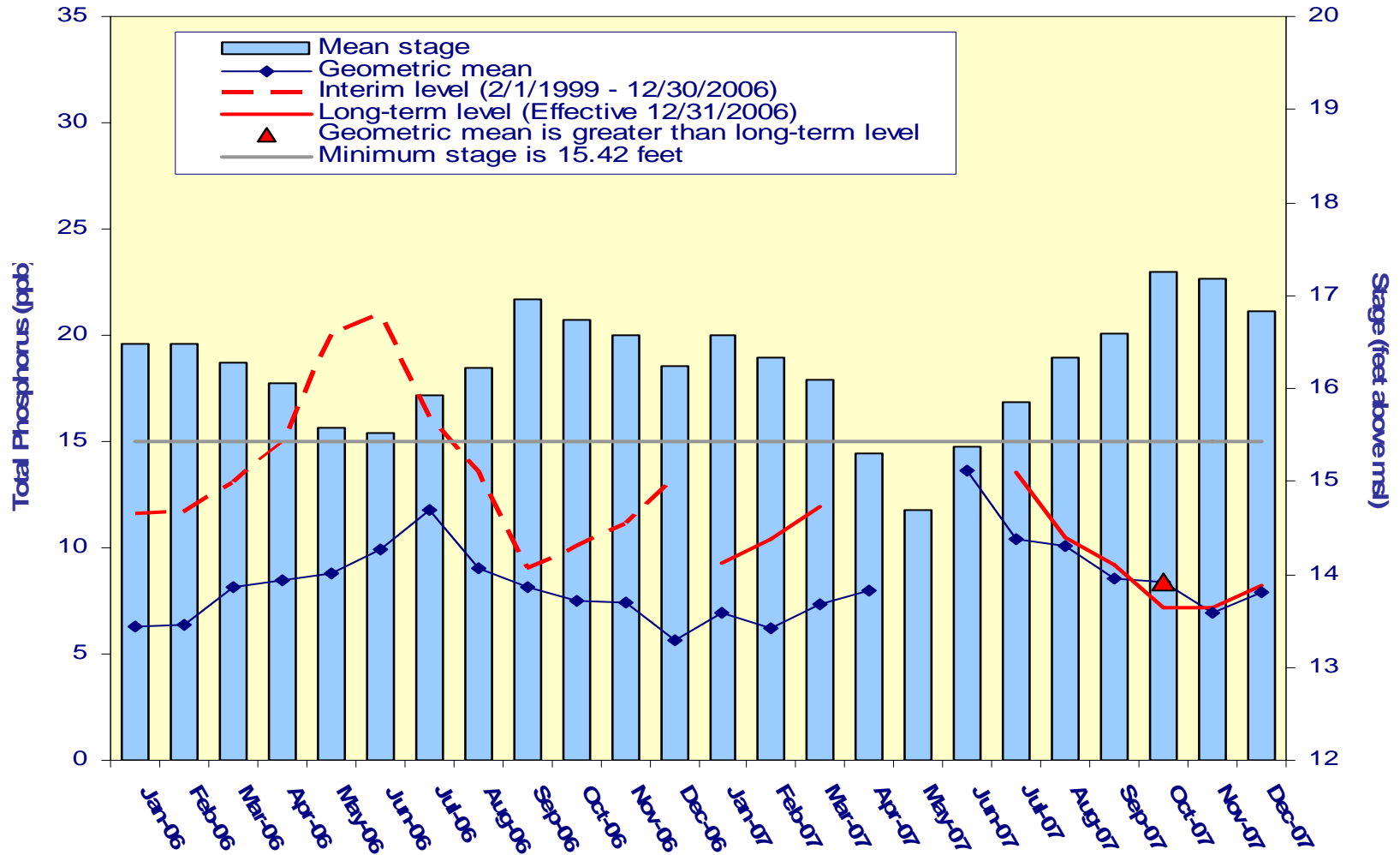


Settlement Agreement

October - December 2007

Prepared for the
Technical Oversight Committee
February 26, 2008

A.R.M Loxahatchee National Wildlife Refuge Monthly Total Phosphorus Geometric Mean Concentrations



Loxahatchee National Wildlife Refuge

Total Phosphorus Compliance Tracking

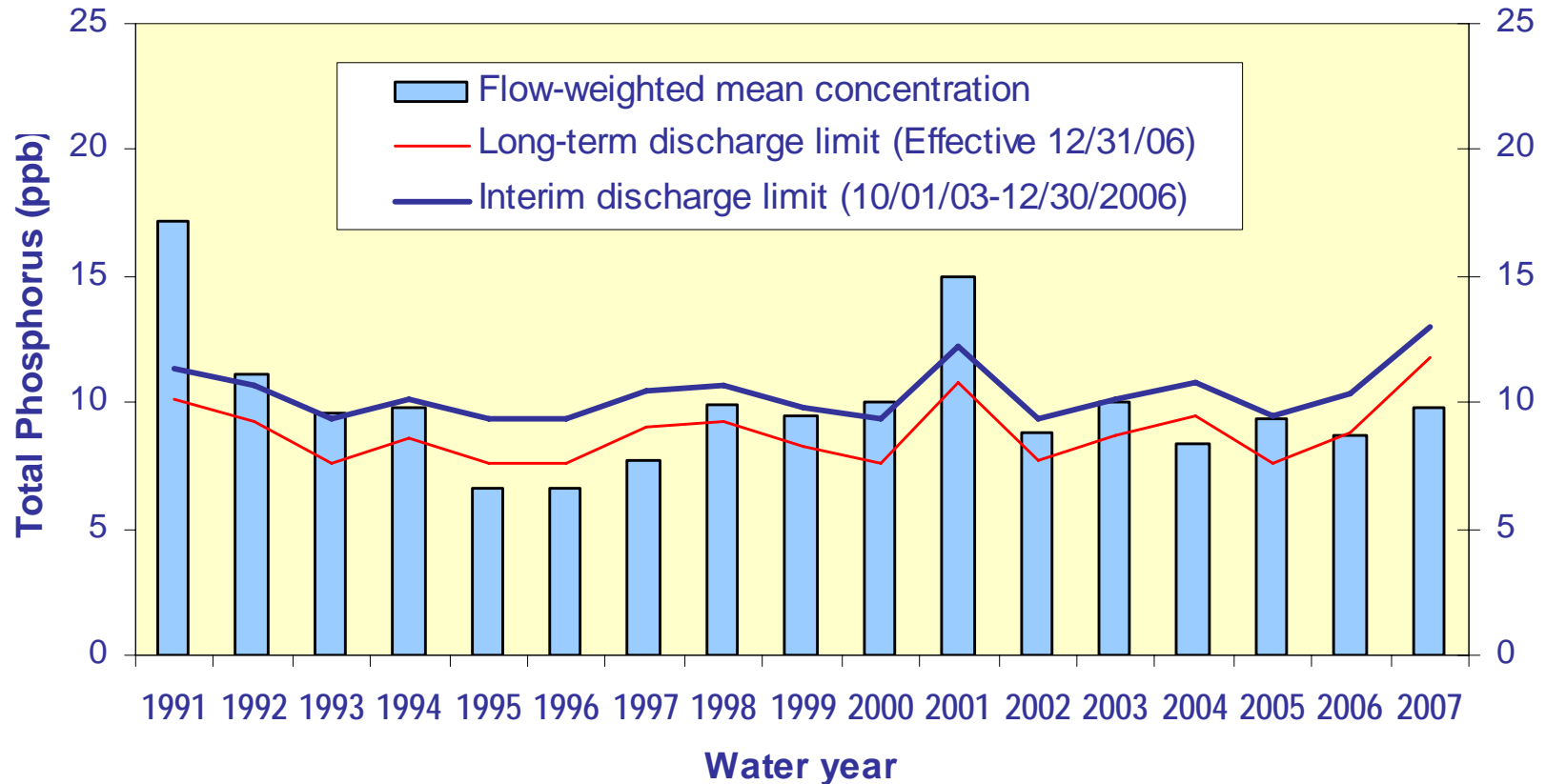
Month - Year	Geometric Mean Concentration	Interim Level ^a (ppb)	Long-Term Level ^a (ppb)	Average Stage ^b	Number of TP Samples	Number of Stage Measurements
	(ppb)	Effective 2/1/99-12/30/06	Effective 12/31/06	(ft NGVD)		
Jan-2006	6.3	11.6	9.7	16.49	13	3
Feb-2006	6.4	11.7	9.8	16.48	13	3
Mar-2006	8.1	13.1	10.8	16.28	12	3
Apr-2006	8.4	14.9	12.2	16.05	12	3
May-2006	8.8	20.1	15.9	15.58	10	3
Jun-2006	9.9	21.0	16.5	15.51	5	3
Jul-2006	11.7	16.1	13.0	15.92	9	3
Aug-2006	9.0	13.5	11.1	16.22	11	3
Sep-2006	8.2	9.1	7.8	16.96	14	3
Oct-2006	7.5	10.1	8.6	16.74	14	3
Nov-2006	7.4	11.1	9.4	16.56	14	3
Dec-2006	5.6	13.4	11.0	16.23	11	3
Jan-2007	6.9	11.1	9.3	16.57	14	3
Feb-2007	6.2	12.6	10.4	16.34	13	3
Mar-2007	7.3	14.5	11.8	16.10	10	3
Apr-2007	8.0	N/A	N/A	15.30	3	3
May-2007	n/a	N/A	N/A	14.68	0	3
Jun-2007	13.6	N/A	N/A	15.37	4	3
Jul-2007	10.4	16.8	13.5	15.86	13	3
Aug-2007	10.1	12.7	10.5	16.33	13	3
Sep-2007	8.5	10.9	9.2	16.59	14	3
Oct-2007	8.4	8.3	7.2	17.26	14	3
Nov-2007	7.0	8.3	7.2	17.19	14	3
Dec-2007	7.9	9.6	8.2	16.84	14	3

Refuge TP Compliance Tracking for October 2007 – February 2008

Month - Year	Geometric Mean Concentration	Interim Level (ppb)	Long-Term Level (ppb)	Average Stage	Number of TP Samples	Number of Stage Measurements
	(ppb)	Effective 2/1/99-12/30/06	Effective 12/31/06	(ft NGVD)		
Oct-2007	8.4	8.3	7.2	17.26	14	3
Nov-2007	7.0	8.3	7.2	17.19	14	3
Dec-2007	7.9	9.6	8.2	16.84	14	3
Jan-2008	6.2	10.5	8.9	16.68	13	3
Feb-2008	7.6	11.2	9.4	16.55	14	3

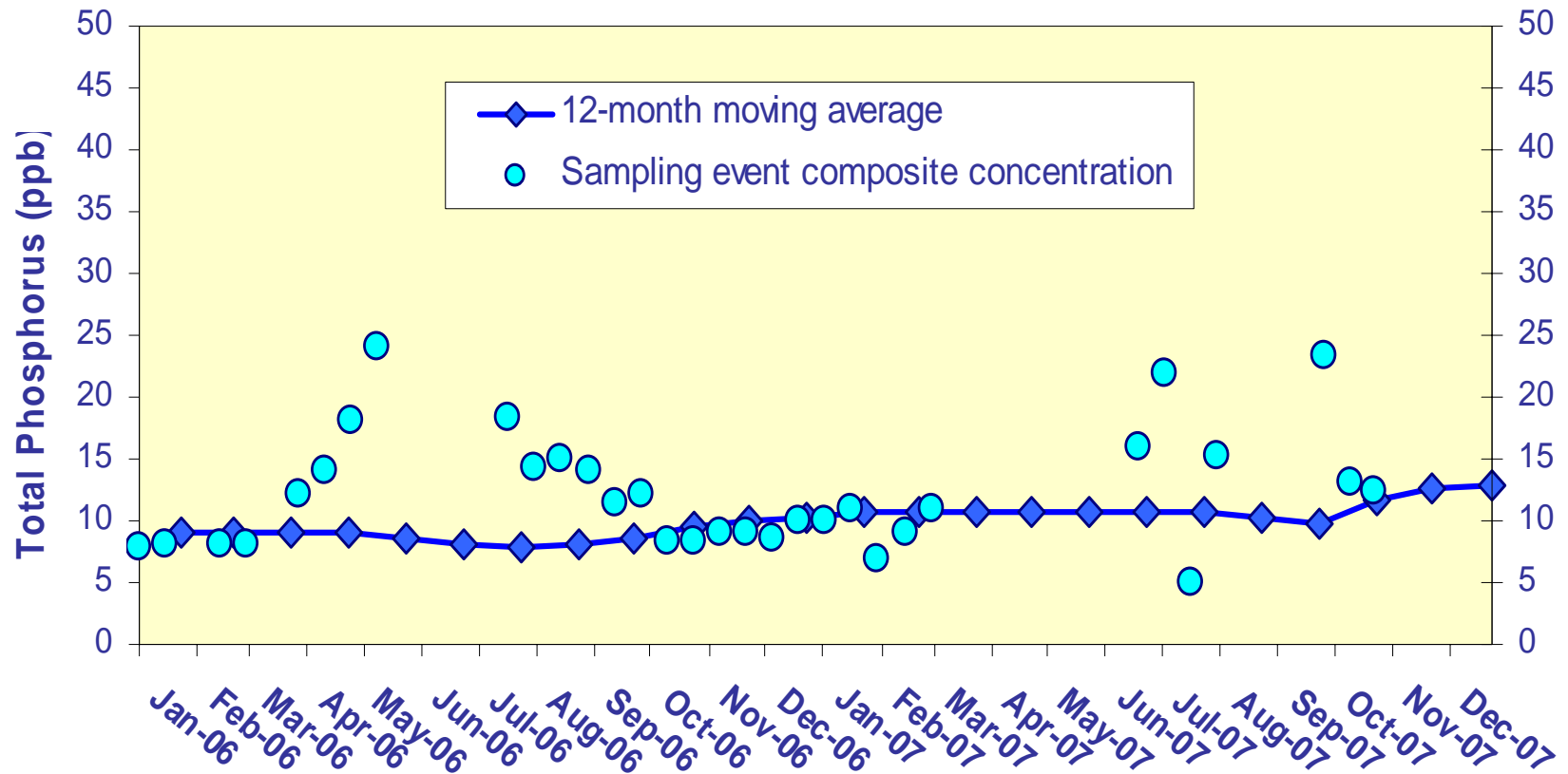
* January and February 2008 values are preliminary.

Flow-weighted Mean Concentrations Inflows to ENP through Shark River Slough



12-month FWMC at the end of each water year compared to the TP interim and long-term limits.

Flow-Weighted Mean Concentrations Inflows to ENP through Shark River Slough



12-month FWMC at the end of each month and the composite TP concentration for each sampling event.

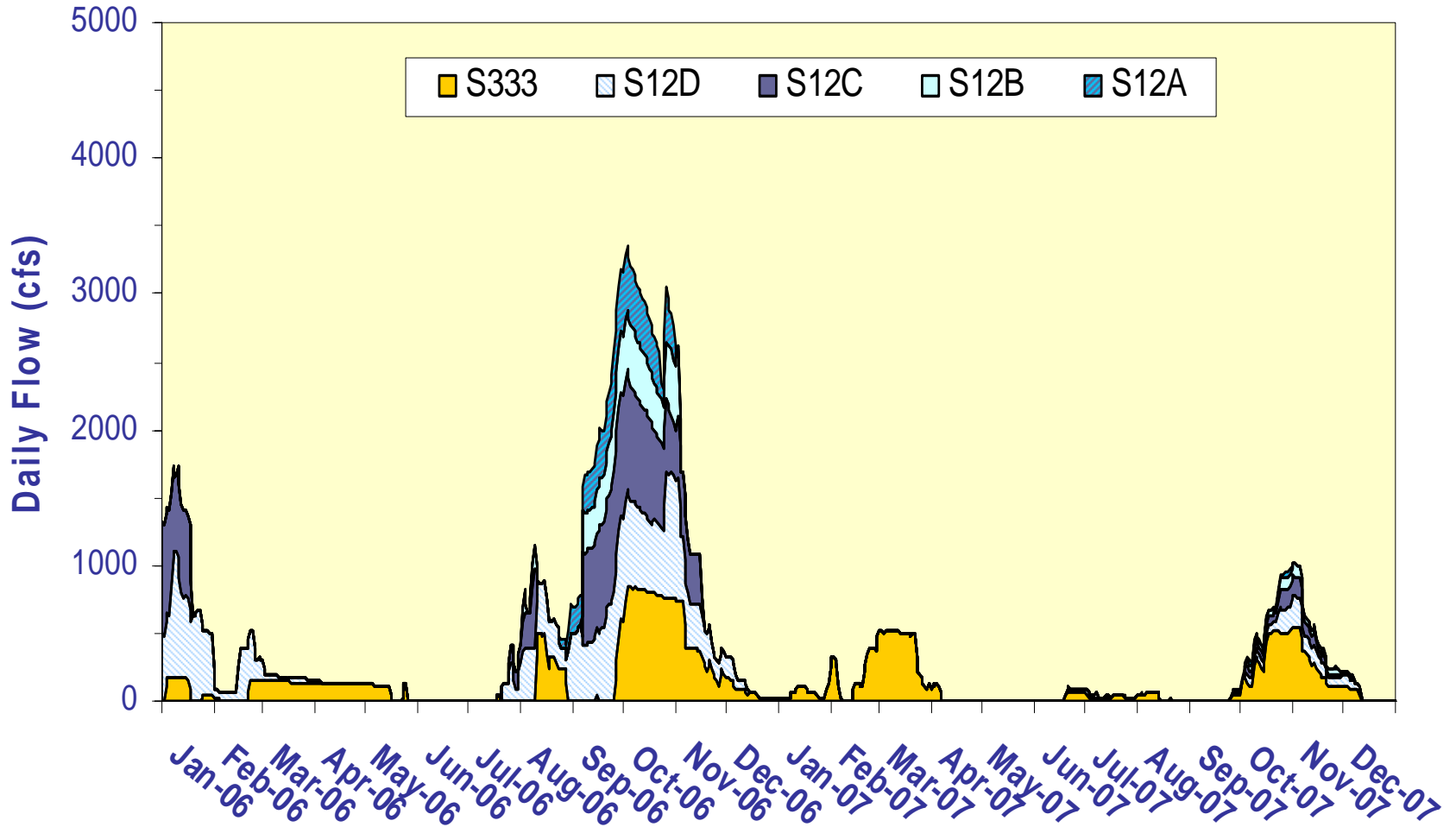
Shark River Slough TP Concentration Compliance Tracking

12-Month Period	Total Flow	TP Flow Weighted Mean	Interim Limit (ppb)	Long-Term Limit (ppb)	Percent of Sampling Events Greater than 10 ppb	
			Effective 10/1/03-12/30/06	Effective 12/31/06	(%)	
	(kac-ft)	(ppb)			Guideline	Observed
2/1/2005 - 1/31/2006	1507.7	9.1	9.4	7.6	40.1	39.1
3/1/2005 - 2/28/2006	1497.6	9.0	9.4	7.6	40.1	39.1
4/1/2005 - 3/31/2006	1481.0	9.0	9.4	7.6	40.1	34.8
5/1/2005 - 4/30/2006	1436.1	9.0	9.4	7.6	40.1	34.8
6/1/2005 - 5/31/2006	1395.5	8.5	9.4	7.6	40.1	31.8
7/1/2005 - 6/30/2006	1326.6	8.2	9.4	7.6	40.1	25.0
8/1/2005 - 7/31/2006	1113.3	7.7	9.4	7.6	40.1	26.3
9/1/2005 - 8/31/2006	914.7	8.1	9.9	8.3	43.5	36.8
10/1/2005 - 9/30/2006	814.1 ^a	8.7	10.3	8.8	46.0	45.0
11/1/2005 - 10/31/2006	779.6	9.5	10.5	9.0	46.9	50.0
12/1/2005 - 11/30/2006	642.8	10.0	11.1	9.7	50.8	50.0
1/1/2006 - 12/31/2006	507.9	10.3	11.8	10.5	55.0	50.0
2/1/2006 - 1/31/2007	446.1	10.7	12.1	10.9	57.0	55.0
3/1/2006 - 2/28/2007	442.4	10.8	12.1	10.9	57.2	52.4
4/1/2006 - 3/31/2007	456.0	10.8	12.0	10.8	56.7	57.1
5/1/2006 - 4/30/2007	449.5	10.8	12.1	10.8	56.9	52.6
6/1/2006 - 5/31/2007	445.5	10.7	12.1	10.9	57.1	47.1
7/1/2006 - 6/30/2007	447.6	10.8	12.1	10.8	57.0	50.0
8/1/2006 - 7/31/2007	444.6	10.6	12.1	10.9	57.1	47.4
9/1/2006 - 8/31/2007	401.0	10.3	12.3	11.1	58.6	44.4
10/1/2006 - 9/30/2007	289.7	9.8	13.0	11.8	62.6	37.5
11/1/2006 - 10/31/2007	147.9	11.7 ^b	13.8	12.7	67.9	50.0
12/1/2006 - 11/30/2007	121.2	12.6 ^b	13.9	12.8	68.9	62.5
1/1/2007 - 12/31/2007	118.2	12.8 ^b	14.0	12.8	69.1	71.4

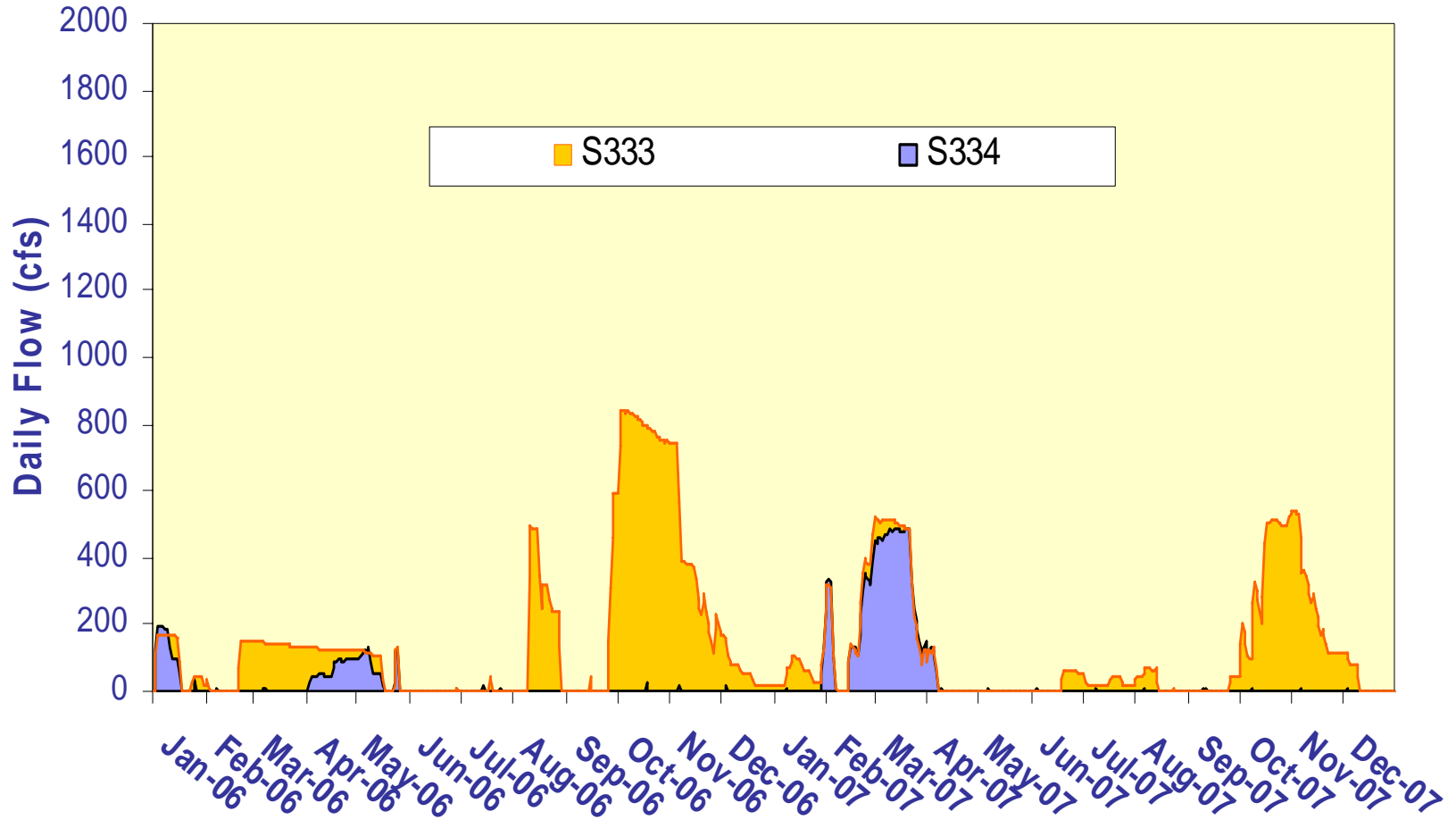
Shark River Slough TP Concentration Compliance Tracking for October 2007 – December 2007

12-Month Period	Total Flow (kac-ft)	TP Flow Weighted Mean (ppb)	Interim Limit (ppb)	Long-Term Limit (ppb)	Percent of Sampling Events Greater than 10 ppb	
			Effective	Effective	(%)	
			10/1/03-12/30/06	12/31/06	Guideline	Observed
11/1/2006 - 10/31/2007	147.9	11.7	13.8	12.7	67.9	50.0
12/1/2006 - 11/30/2007	121.2	12.6	13.9	12.8	68.9	62.5
1/1/2007 - 12/31/2007	118.2	12.8	14.0	12.8	69.1	71.4

Shark River Slough Daily Flows by Structure

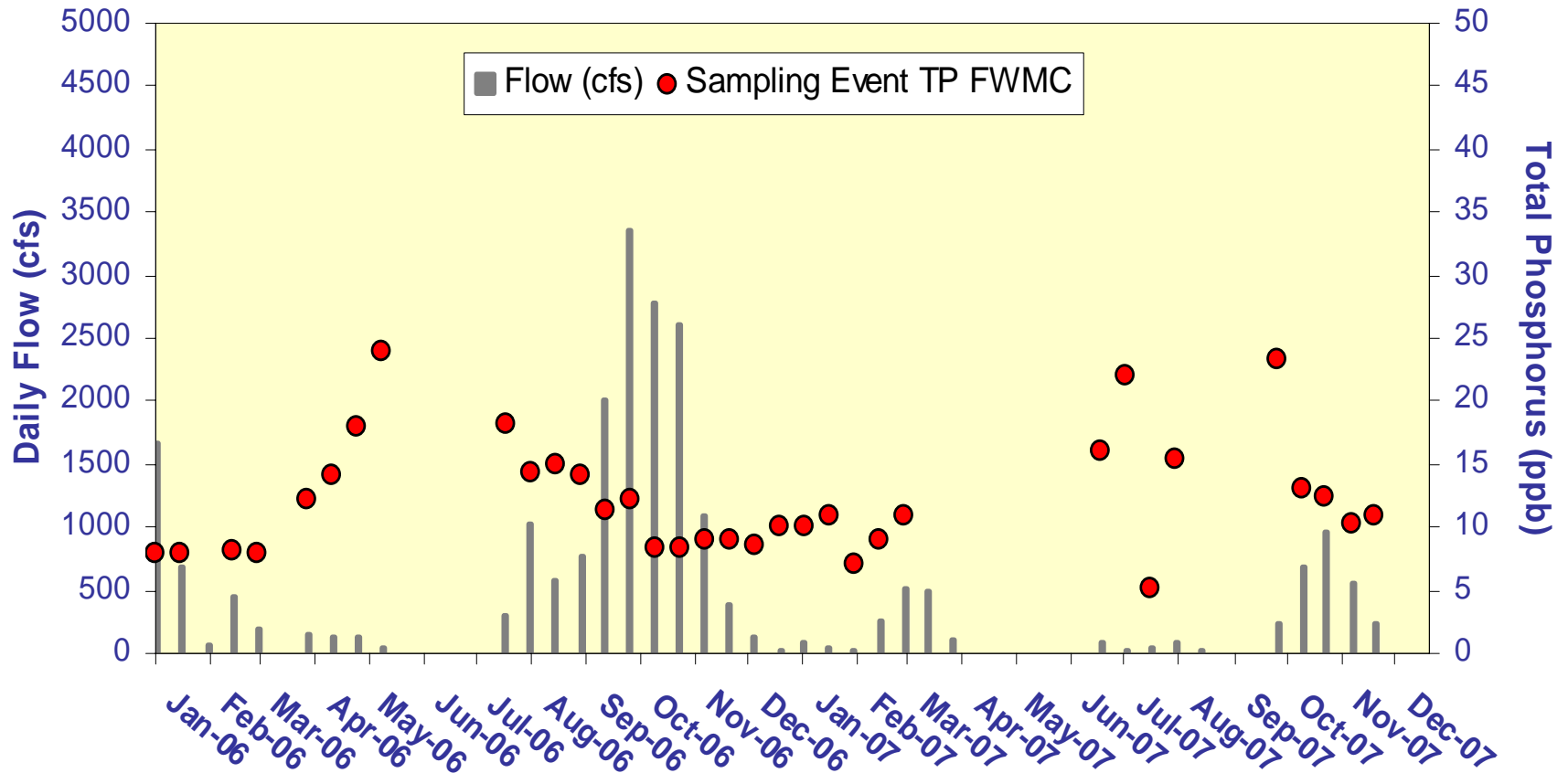


Daily flow at S333 and S334



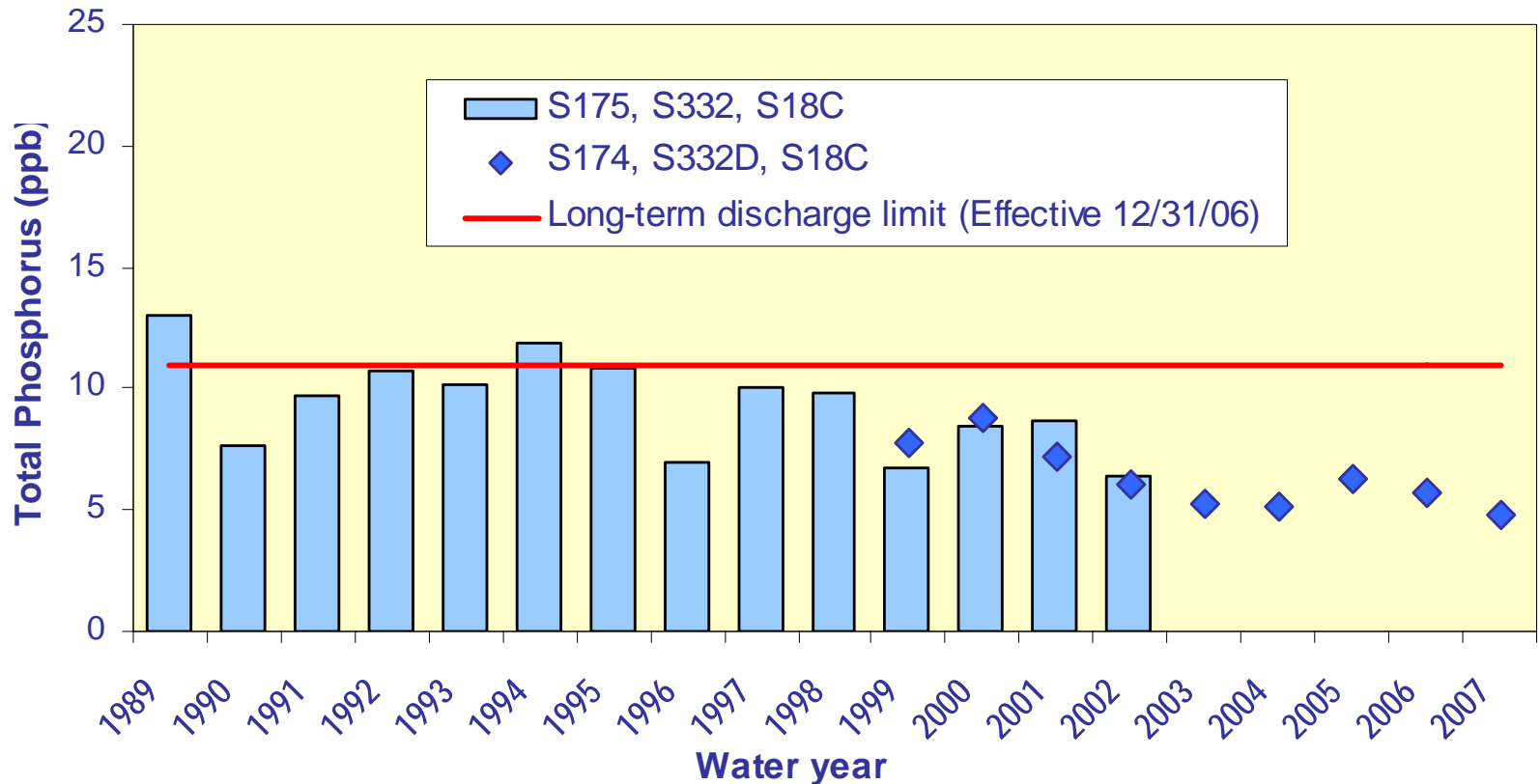
Shark River Slough

Sampling Event Daily Flows and FWMC



Daily flow at Shark River Slough structures and the corresponding TP FWMCs for individual sampling events.

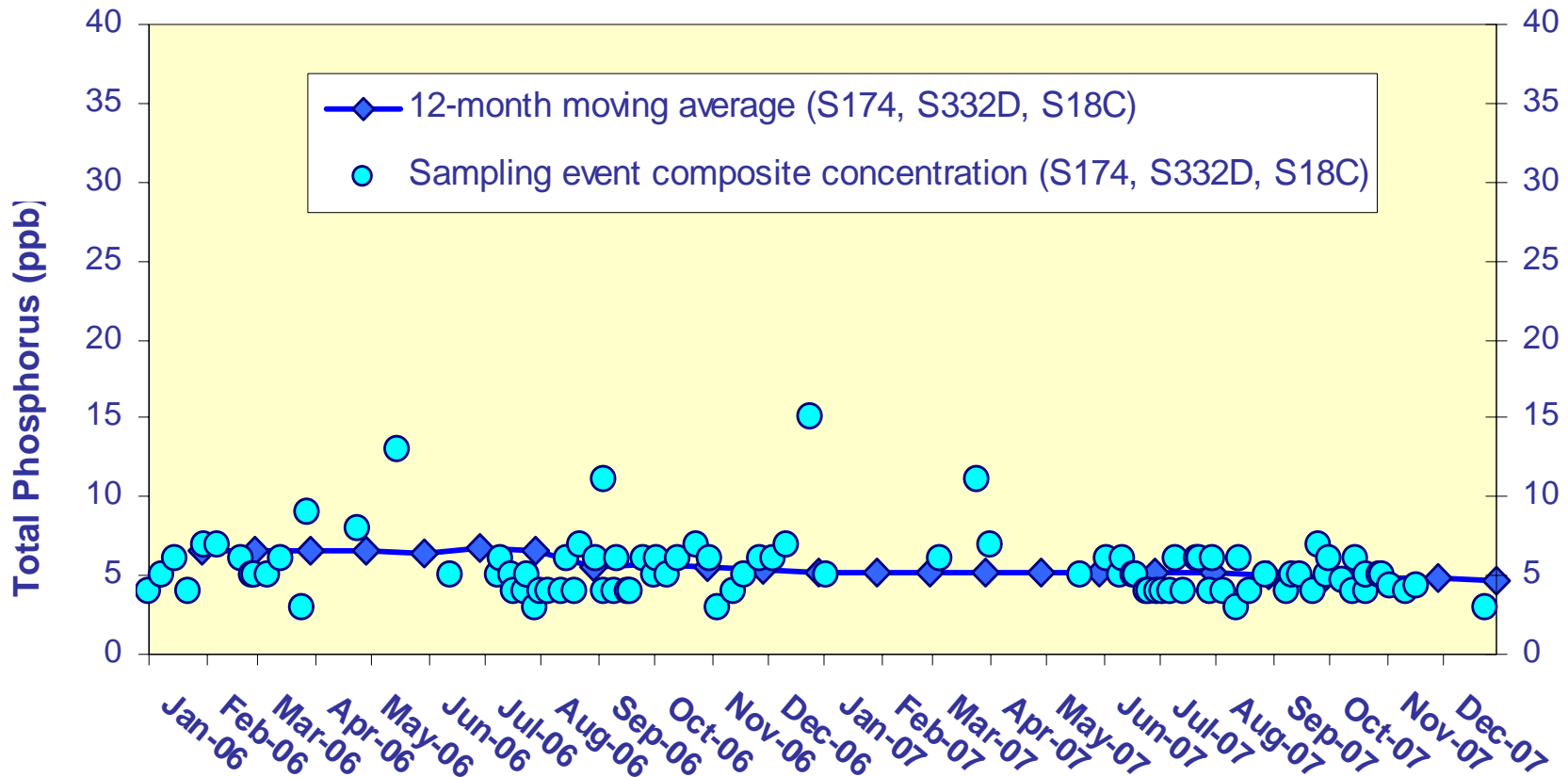
TP Flow-Weighted Mean Concentrations Inflows to the ENP through Taylor Slough and the Coastal Basins



The 12-month FWMC at the end of each water year compared to the 11 ppb long-term total phosphorus limit.

TP Flow-Weighted Mean Concentrations

Inflows to the ENP through Taylor Slough and the Coastal Basins



The 12-month FWMC at the end of each month and the composite TP concentration for each sampling event.

Taylor Slough and the Coastal Basins

TP Concentration

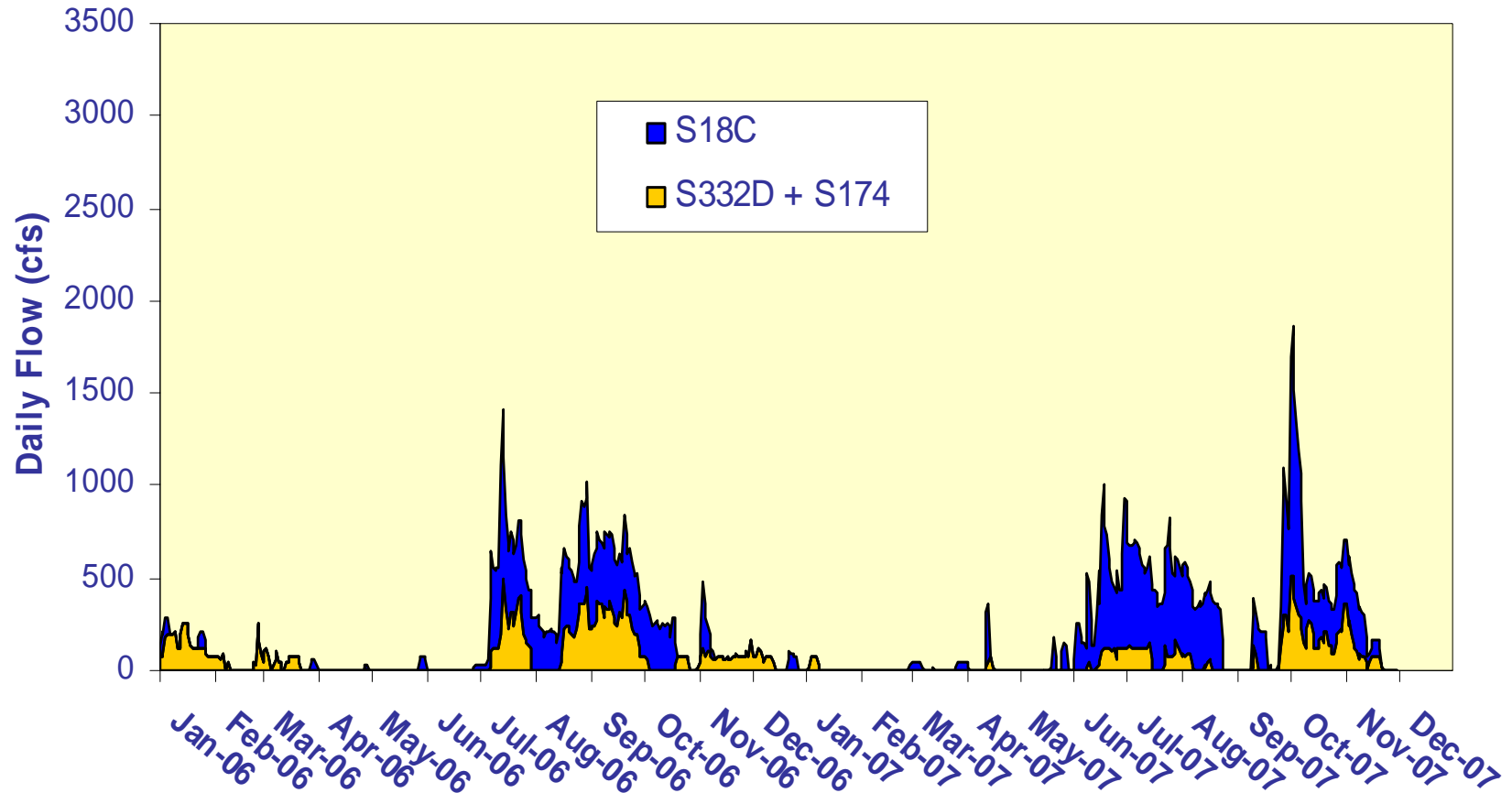
Compliance Tracking

12-Month Period	Total Flow (kac-ft)	TP Flow Weighted Mean (ppb)	Long-Term Limit (Effective 12/31/06) (ppb)	Percent of Sampling Events Greater than 10 ppb (%)	
				Guideline	Observed
2/1/2005 - 1/31/2006	369.5	6.6	11.0	53.1	11.8
3/1/2005 - 2/28/2006	364.6	6.6	11.0	53.1	11.8
4/1/2005 - 3/31/2006	359.7	6.6	11.0	53.1	11.8
5/1/2005 - 4/30/2006	351.5	6.5	11.0	53.1	10.4
6/1/2005 - 5/31/2006	343.7	6.4	11.0	53.1	4.5
7/1/2005 - 6/30/2006	295.5	6.7	11.0	53.1	4.9
8/1/2005 - 7/31/2006	280.0	6.6	11.0	53.1	4.5
9/1/2005 - 8/31/2006	227.0	5.5	11.0	53.1	2.2
10/1/2005 - 9/30/2006	207.4	5.7	11.0	53.1	4.1
11/1/2005 - 10/31/2006	179.5	5.6	11.0	53.1	3.9
12/1/2005 - 11/30/2006	158.8	5.3	11.0	53.1	3.9
1/1/2006 - 12/31/2006	137.4	5.2	11.0	53.1	6.0
2/1/2006 - 1/31/2007	127.6	5.2	11.0	53.1	6.4
3/1/2006 - 2/28/2007	125.4	5.2	11.0	53.1	7.0
4/1/2006 - 3/31/2007	123.8	5.2	11.0	53.1	10.0
5/1/2006 - 4/30/2007	125.4	5.2	11.0	53.1	10.0
6/1/2006 - 5/31/2007	126.1	5.2	11.0	53.1	7.5
7/1/2006 - 6/30/2007	153.0	5.1	11.0	53.1	6.5
8/1/2006 - 7/31/2007	153.4	5.1	11.0	53.1	6.4
9/1/2006 - 8/31/2007	143.6	5.0	11.0	53.1	6.4
10/1/2006 - 9/30/2007	120.8	4.8	11.0	53.1	4.6
11/1/2006 - 10/30/2007	150.5	4.8	11.0	53.1	4.2
12/1/2006 - 11/30/2007	155.8	4.8	11.0	53.1	4.3
1/1/2007 - 12/31/2007	154.8	4.7	11.0	53.1	2.3

Taylor Slough and the Coastal Basins TP Concentration Compliance Tracking For October 2007 – December 2007

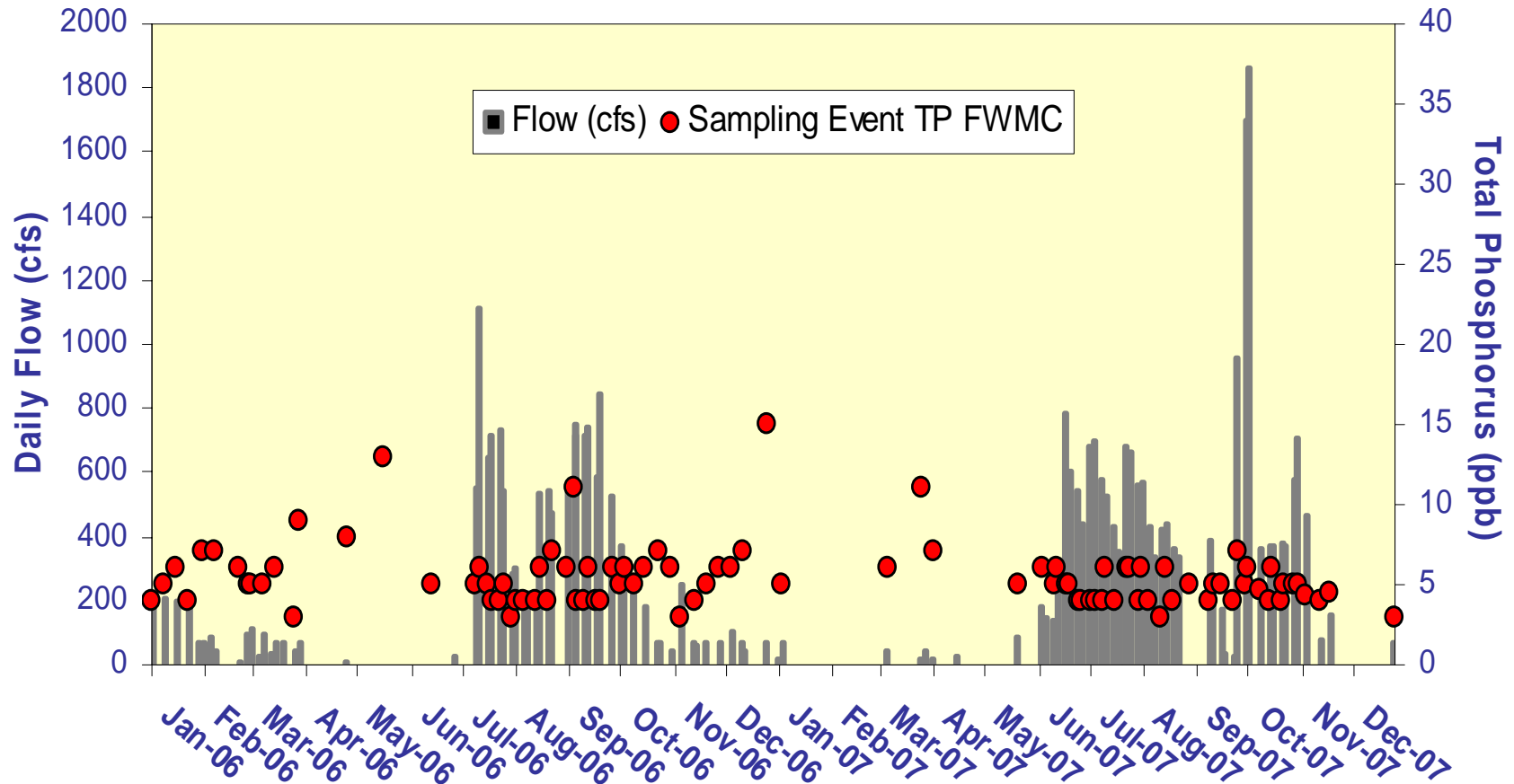
12-Month Period	Total Flow (kac-ft)	TP Flow Weighted Mean (ppb)	Long-Term Limit (Effective 12/31/06) (ppb)	Percent of Sampling Events Greater than 10 ppb (%)	
				Guideline	Observed
11/1/2006 - 10/30/2007	150.5	4.8	11.0	53.1	4.2
12/1/2006 - 11/30/2007	155.8	4.8	11.0	53.1	4.3
1/1/2007 - 12/31/2007	154.8	4.7	11.0	53.1	2.3

Taylor Slough and S18C Daily Flows



Daily flows into Everglades National Park through Taylor Slough and S18C.

Taylor Slough and S18C Sampling Event Flows and FWMC



Daily flows at Taylor Slough structures and S18C and the corresponding TP for individual sampling events.