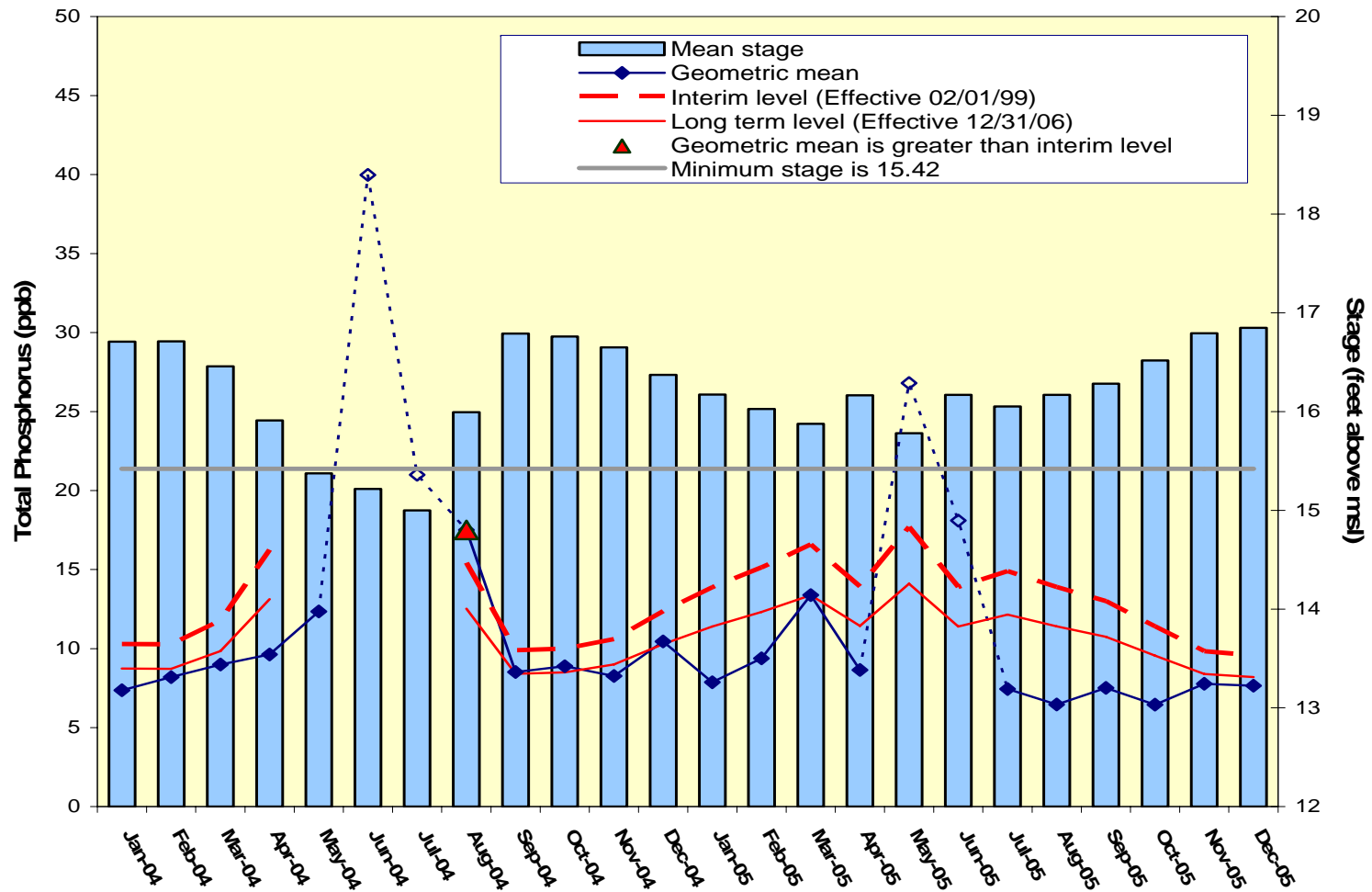


Settlement Agreement

October - December 2005

Prepared for the
Technical Oversight Committee
February 21, 2006

A.R.M Loxahatchee National Wildlife Refuge Monthly Total Phosphorus Geometric Mean Concentrations



Loxahatchee National Wildlife Refuge

Total Phosphorus Compliance Tracking

Month - Year	Geometric Mean Concentration	Interim Level (ppb)	Long Term Level (ppb)	Average Stage (ft NGVD)	Number of TP Samples	Number of Stage Measurements
	(ppb)	Effective 2/1/99	Effective 12/31/06			
Jan-2004	7.4	10.3	8.7	16.71	14	3
Feb-2004	8.2	10.3	8.7	16.71	14	3
Mar-2004	9.0	11.8	9.8	16.46	14	3
Apr-2004	9.6	16.3	13.1	15.91	9	3
May-2004	12.4	N/A	N/A	15.37	9	3
Jun-2004	40.0	N/A	N/A	15.22	2	3
Jul-2004	21.0	N/A	N/A	15.00	1	3
Aug-2004	17.5	15.4	12.5	16.00	12	3
Sep-2004	8.5	9.9	8.4	16.79	14	3
Oct-2004	8.9	10.0	8.5	16.76	13	3
Nov-2004	8.3	10.6	9.0	16.65	14	3
Dec-2004	10.4	12.4	10.3	16.37	13	3
Jan-2005	7.9	13.9	11.4	16.17	12	3
Feb-2005	9.4	15.1	12.3	16.03	11	3
Mar-2005	13.4	16.6	13.4	15.88	11	3
Apr-2005	8.6	13.9	11.4	16.17	11	3
May-2005*	26.8*	17.7	14.1	15.78	10*	3
June-2005*	18.1*	13.9	11.4	16.17	14*	3
Jul-2005	7.4	14.9	12.1	16.05	14	3
Aug-2005	6.5	13.9	11.4	16.17	12	3
Sep-2005	7.5	13.0	10.8	16.28	11	3
Oct-2005	6.5	11.4	9.6	16.52	13	3
Nov-2005	7.8	9.8	8.4	16.79	14	3
Dec-2005	7.6	9.6	8.2	16.85	14	3

Refuge TP Compliance Tracking for October 2005 – February 2006

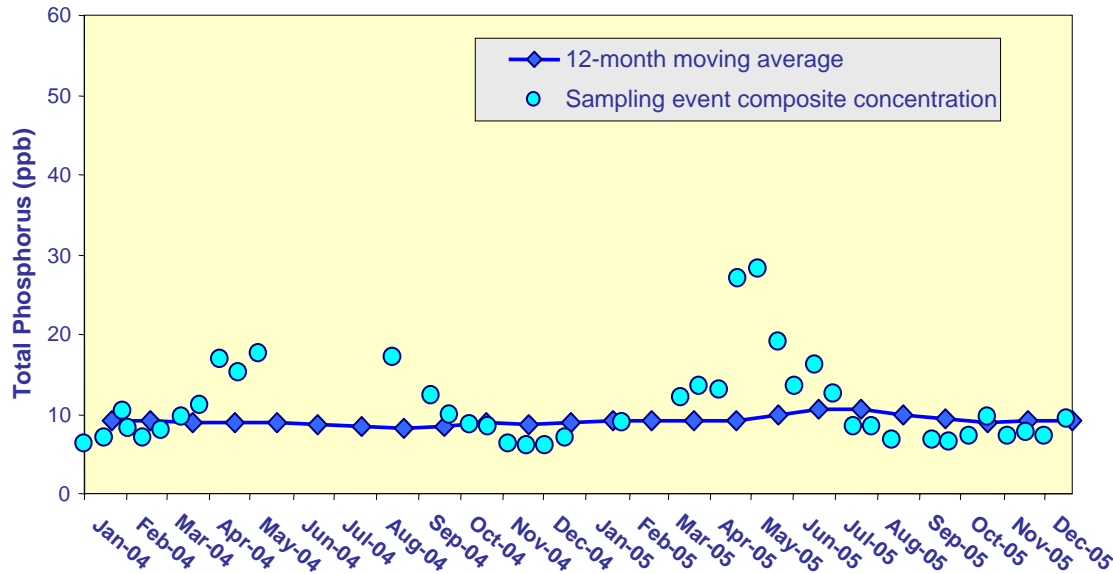
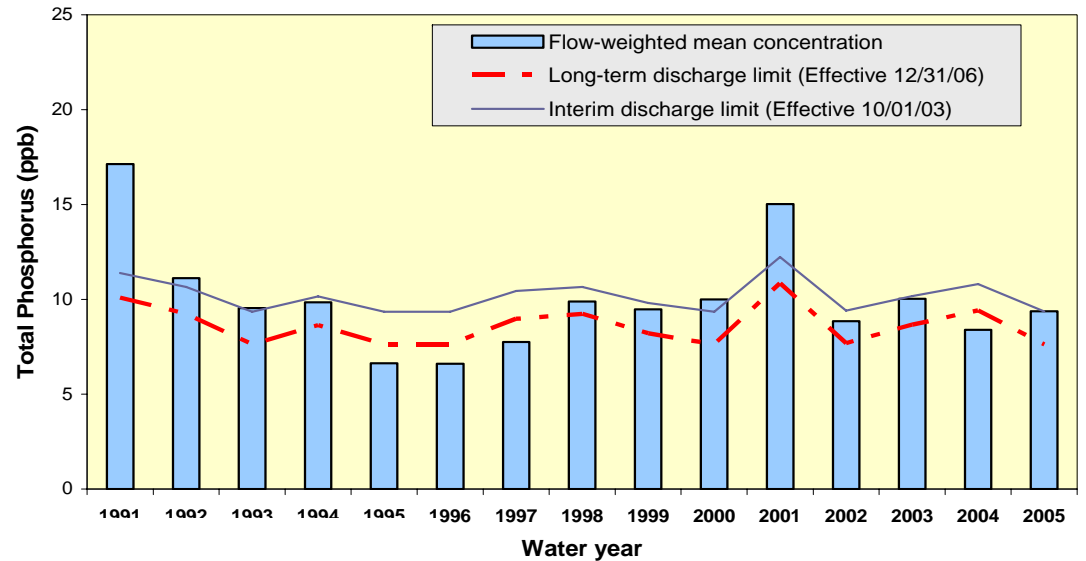
Month - Year	Geometric Mean Concentration	Interim Level (ppb)	Long Term Level (ppb)	Average Stage (ft NGVD)	Number of TP Samples	Number of Stage Measurements
	(ppb)	Effective 2/1/99	Effective 12/31/06			
Oct-2005	6.5	11.4	9.6	16.52	13	3
Nov-2005	7.8	9.8	8.4	16.79	14	3
Dec-2005	7.6	9.6	8.2	16.85	14	3
Jan-2006**	6.3	11.6	9.7	16.49	13	3
Feb-2006**	6.4	11.7	9.8	16.48	13	3

** January and February 2006 data are **preliminary** values.

Flow-Weighted Mean Concentrations

Inflows to Everglades National Park through Shark River Slough

12-month moving average at the end of each water year compared to the TP interim and long-term limits.



12-month moving average at the end of each month and the composite TP concentration for each sampling event.

Shark River Slough

TP Concentration

Compliance Tracking

(* September compliance points.)

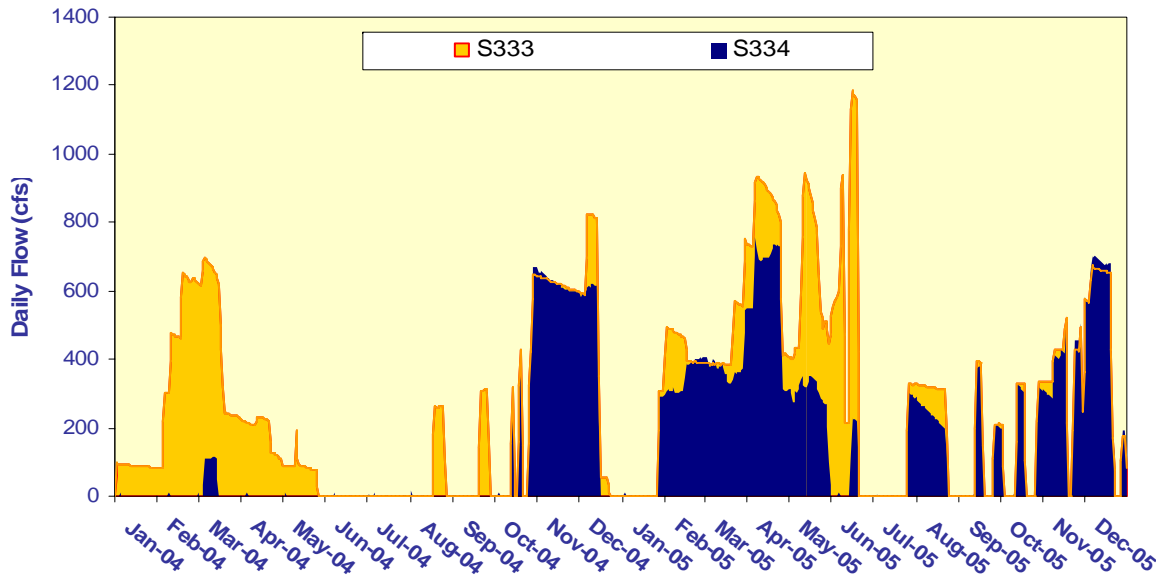
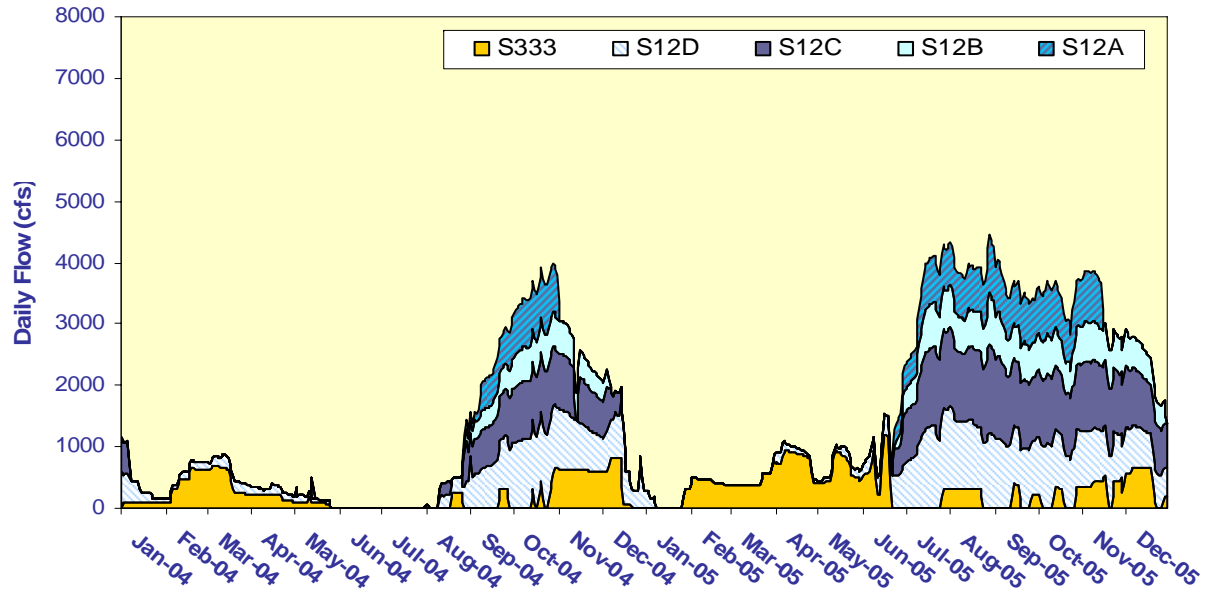
12-Month Period Ending On	Total Period Flow (Kac-ft)	Flow Weighted Mean Total Phosphorus (ppb)	Interim Limit (ppb)	Long Term Limit (ppb)	Percent of Sampling Events Greater than 10 ppb (%)	
			Effective 10/1/2003	Effective 12/31/2006	Guideline	Observed
31-Jan-04	1049.0	9.2	9.4	7.7	40.4	46.2
29-Feb-04	1033.9	9.1	9.5	7.8	40.7	44.4
31-Mar-04	1036.7	8.9	9.4	7.7	40.7	37.0
30-Apr-04	1012.9	9.0	9.5	7.9	41.2	40.7
31-May-04	980.2	9.0	9.7	8.0	41.9	40.7
30-Jun-04	942.5	8.7	9.8	8.2	42.8	36.0
31-Jul-04	832.0	8.4	10.2	8.8	45.5	27.3
31-Aug-04	733.0	8.2	10.7	9.3	48.2	28.6
30-Sep-04*	704.4	8.4	10.8	9.4	49.0	35.0
31-Oct-04	727.8	8.9	10.7	9.3	48.3	35.0
30-Nov-04	760.3	8.7	10.6	9.1	47.4	33.3
31-Dec-04	738.5	9.0	10.7	9.2	48.0	35.0
31-Jan-05	717.3	9.0	10.7	9.3	48.6	38.9
28-Feb-05	709.8	9.1	10.8	9.4	48.8	37.5
31-Mar-05	698.3	9.2	10.8	9.4	49.2	46.7
30-Apr-05	732.6	9.1	10.7	9.3	48.2	46.7
31-May-05	767.1	10.0	10.5	9.1	47.3	50.0
30-Jun-05	836.0	10.5	10.2	8.7	45.4	55.6
31-Jul-05	1054.7	10.5	9.4	7.7	40.3	55.0
31-Aug-05	1269.2	9.8	9.4	7.6	40.1	47.6
30-Sep-05*	1345.9	9.4	9.4	7.6	40.1	42.9
31-Oct-05	1338.1	9.0	9.4	7.6	40.1	40.9
30-Nov-05	1381.7	9.1	9.4	7.6	40.1	42.9
31-Dec-05	1447.6	9.1	9.4	7.6	40.1	42.9

Shark River Slough TP Concentration Compliance Tracking for October – December 2005

12-Month Period Ending On	Total Period Flow (Kac-ft)	Flow Weighted Mean Total Phosphorus (ppb)	Interim Limit (ppb)	Long Term Limit (ppb)	Percent of Sampling Events Greater than 10 ppb	
			Effective 10/1/2003	Effective 12/31/2006	(<i>%</i>)	
					Guideline	Observed
31-Oct-05	1338.1	9.0	9.4	7.6	40.1	<i>40.9</i>
30-Nov-05	1381.7	9.1	9.4	7.6	40.1	<i>42.9</i>
31-Dec-05	1447.6	9.1	9.4	7.6	40.1	<i>42.9</i>

Shark River Slough - Daily Flows

Daily flows into Shark River Slough by structure

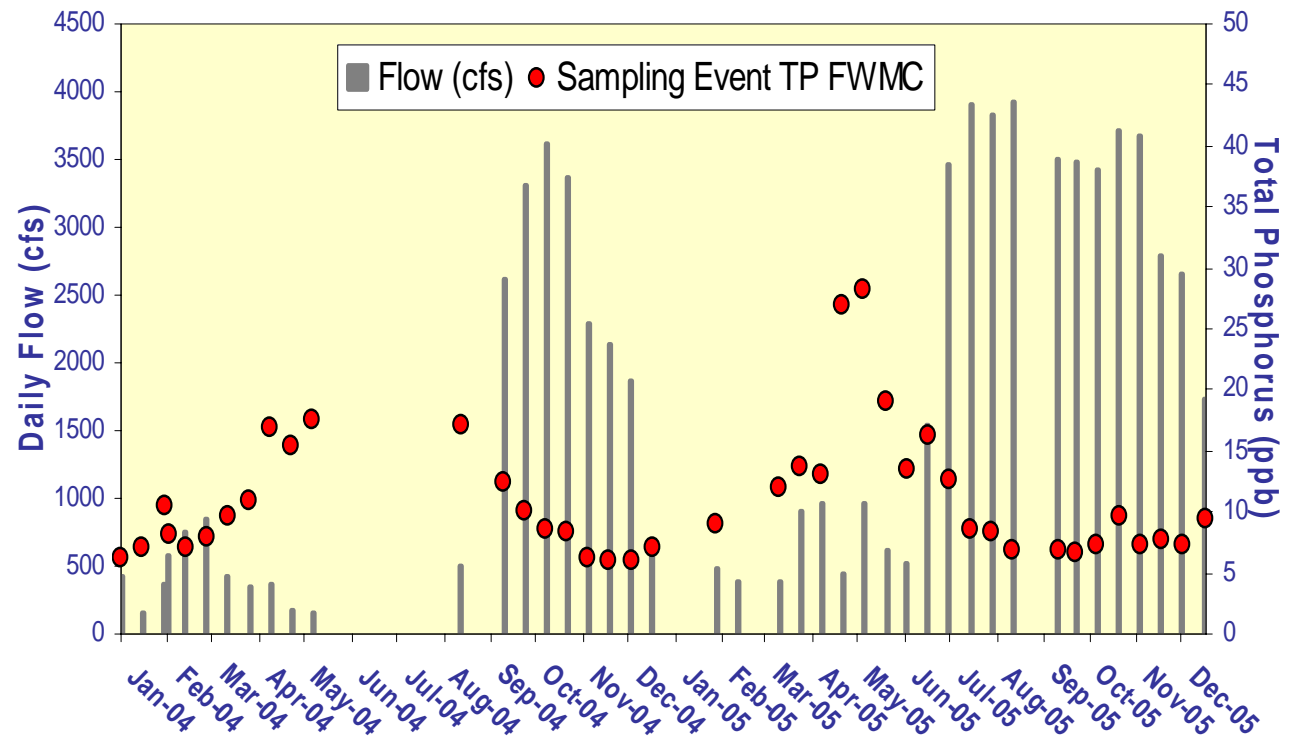


Daily flow at S333 and S334

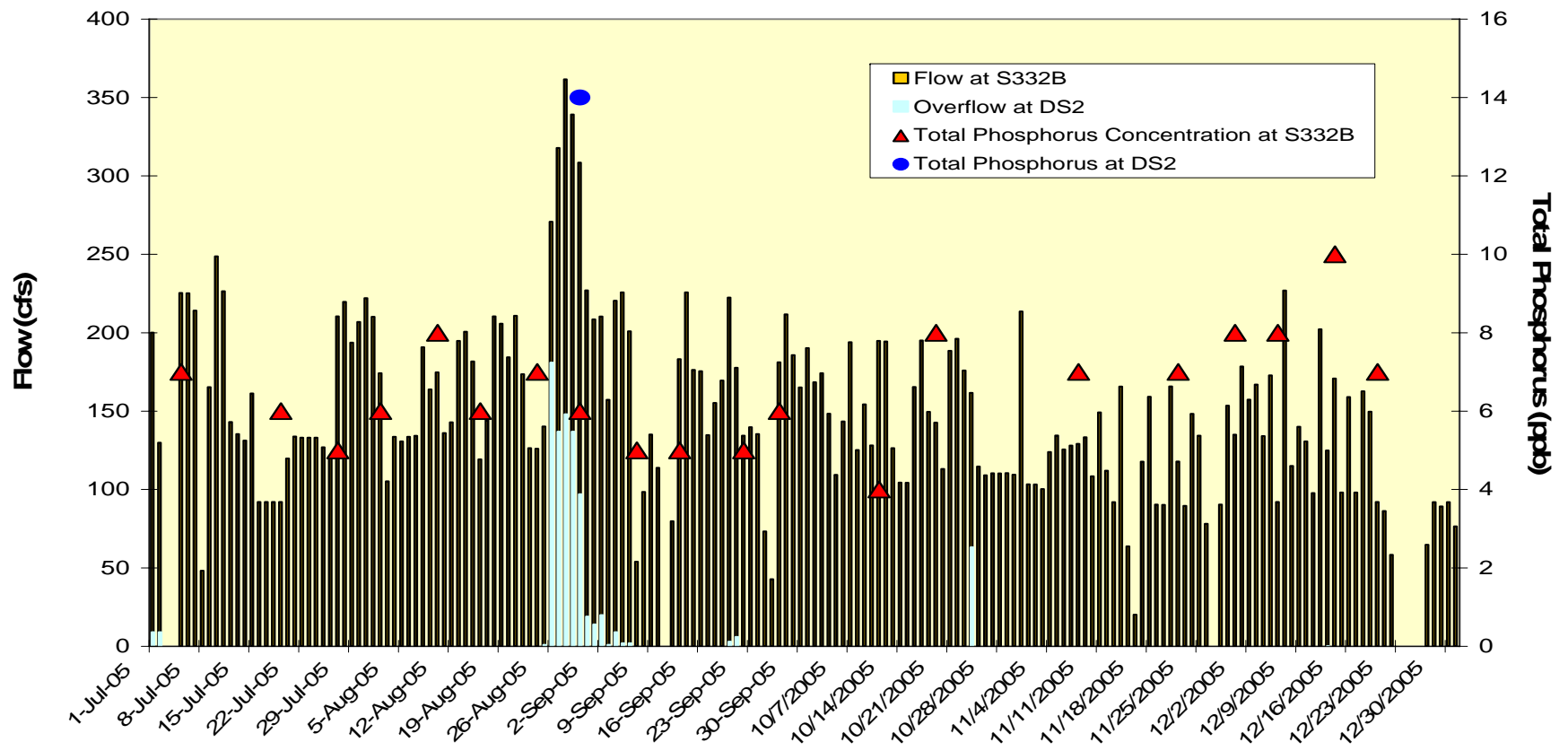
Shark River Slough

Daily Flows and Sampling Event FWMC

Daily flow at Shark River Slough structures and the corresponding TP FWMCs for individual sampling events.

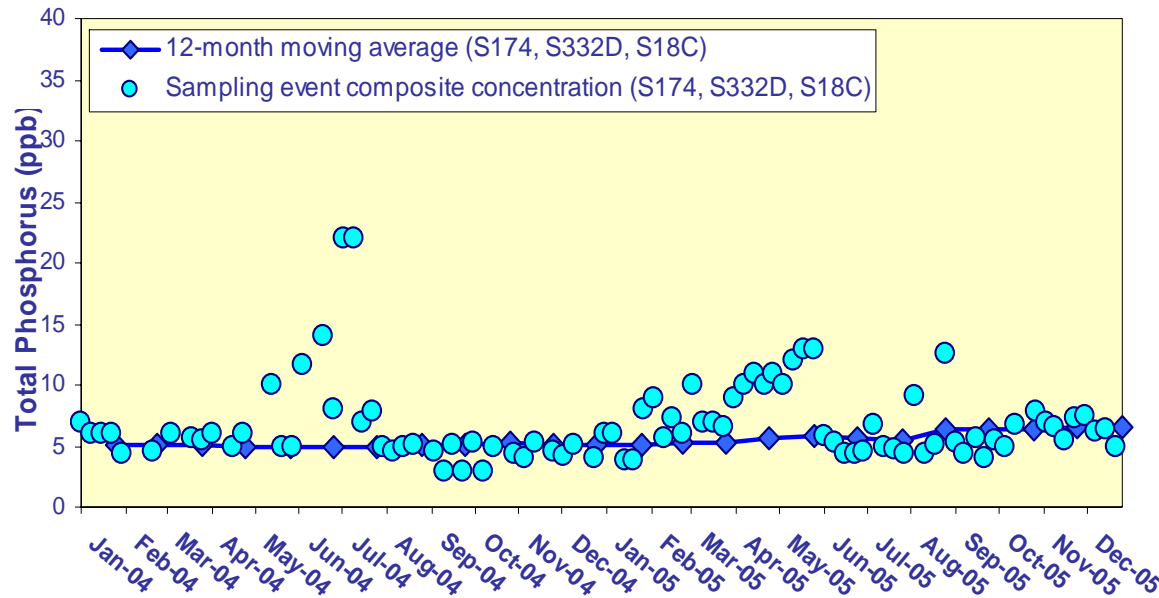
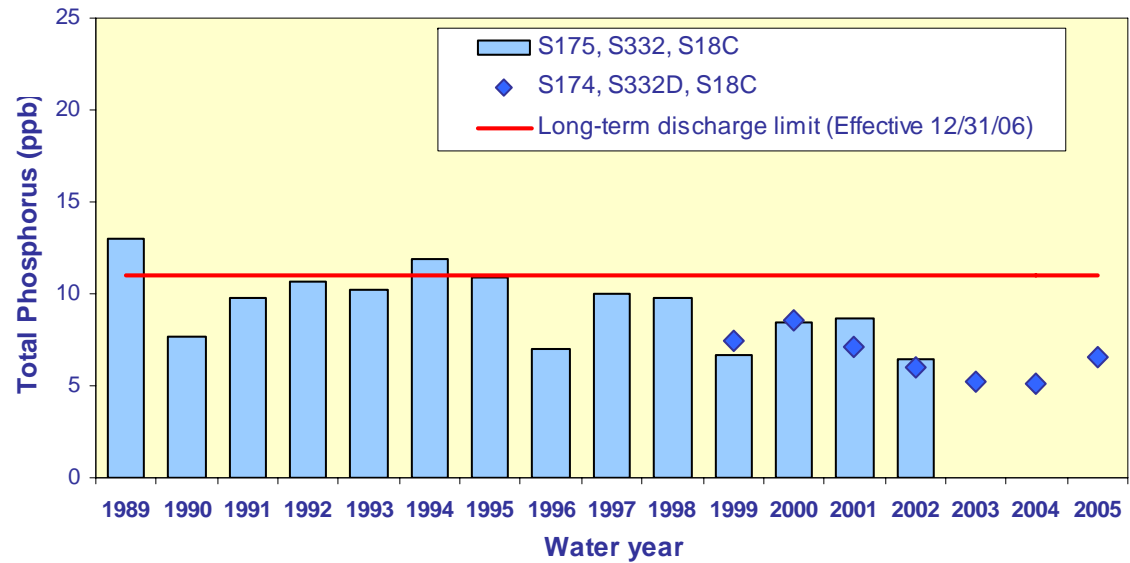


Flow at S332B and Grab Sample TP Concentrations during Overflow Events at DS2



TP Flow-Weighted Mean Concentrations in Inflows to the ENP through Taylor Slough and the Coastal Basins

The 12-month moving average FWMC at the end of each water year compared to the 11 ppb long-term total phosphorus limit.



The 12-month moving average FWMC at the end of each month and the composite TP concentration for each sampling event.

Taylor Slough and the Coastal Basins

TP Concentration Compliance Tracking

12-Month Period Ending On	Total Period Flow (Kac-ft)	Flow Weighted Mean Total Phosphorus (ppb)	Long Term Limit (Effective 12/31/06) (ppb)	Percent of Sampling Events Greater than 10 ppb	
				(%)	
				Guideline	Observed
31-Jan-04	295.9	5.1	11.0	53.1	0.0
29-Feb-04	301.4	5.0	11.0	53.1	0.0
31-Mar-04	297.9	5.0	11.0	53.1	0.0
30-Apr-04	292.3	5.0	11.0	53.1	0.0
31-May-04	274.8	4.9	11.0	53.1	2.2
30-Jun-04	238.0	4.9	11.0	53.1	6.8
31-Jul-04	224.3	5.0	11.0	53.1	11.4
31-Aug-04	202.7	5.1	11.0	53.1	11.4
30-Sep-04	192.6	5.2	11.0	53.1	11.4
31-Oct-04	210.1	5.3	11.0	53.1	11.9
30-Nov-04	206.7	5.1	11.0	53.1	11.9
31-Dec-04	193.0	5.2	11.0	53.1	12.5
31-Jan-05	194.4	5.1	11.0	53.1	12.5
28-Feb-05	194.7	5.2	11.0	53.1	11.9
31-Mar-05	199.6	5.3	11.0	53.1	11.4
30-Apr-05	207.2	5.6	11.0	53.1	13.3
31-May-05	214.1	5.9	11.0	53.1	18.8
30-Jun-05	261.0	5.5	11.0	53.1	14.6
31-Jul-05	304.6	5.4	11.0	53.1	10.4
31-Aug-05	357.1	6.4	11.0	53.1	12.2
30-Sep-05	380.0	6.3	11.0	53.1	12.2
31-Oct-05	373.4	6.3	11.0	53.1	12.2
30-Nov-05	358.6	6.6	11.0	53.1	12.0
31-Dec-05	366.9	6.6	11.0	53.1	11.8

Taylor Slough and the Coastal Basins

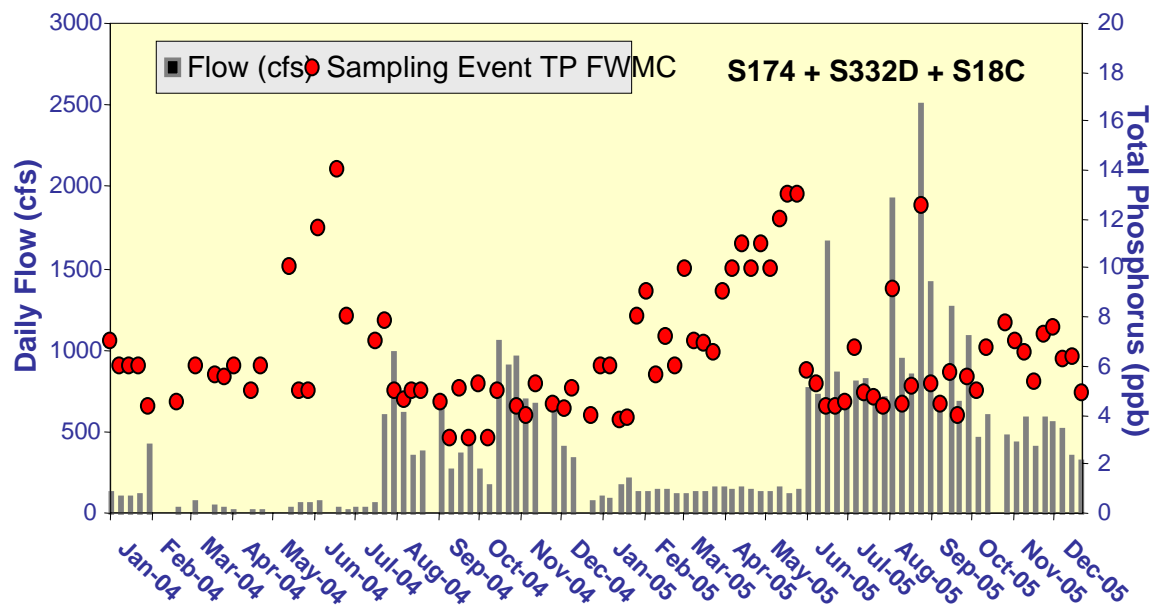
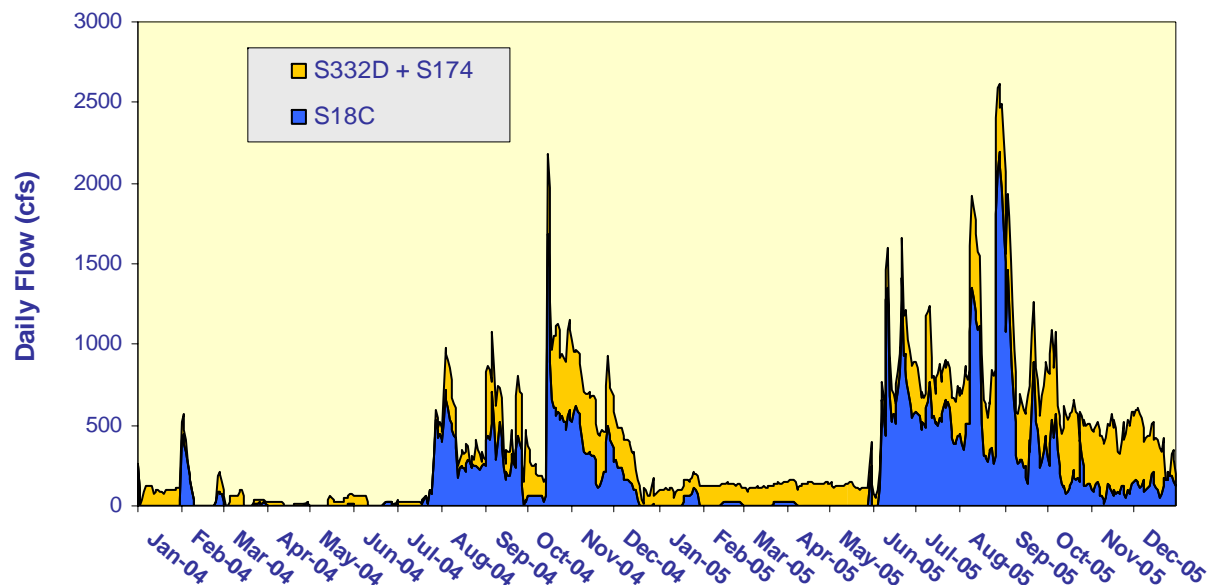
TP Concentration Compliance Tracking for October – December 2005

12-Month Period Ending On	Total Period Flow (Kac-ft)	Flow Weighted Mean Total Phosphorus (ppb)	Long Term Limit (Effective 12/31/06) (ppb)	Percent of Sampling Events Greater than 10 ppb (%)	
				Guideline	Observed
31-Oct-05	373.4	6.3	11.0	53.1	12.2
30-Nov-05	358.6	6.6	11.0	53.1	12.0
31-Dec-05	366.9	6.6	11.0	53.1	11.8

Taylor Slough and S18C

Daily Flows and Sampling Event FWMC

Daily flows into Everglades National Park through Taylor Slough and S18C.



Daily flows at Taylor Slough structures and S18C and the corresponding TP for individual sampling events.