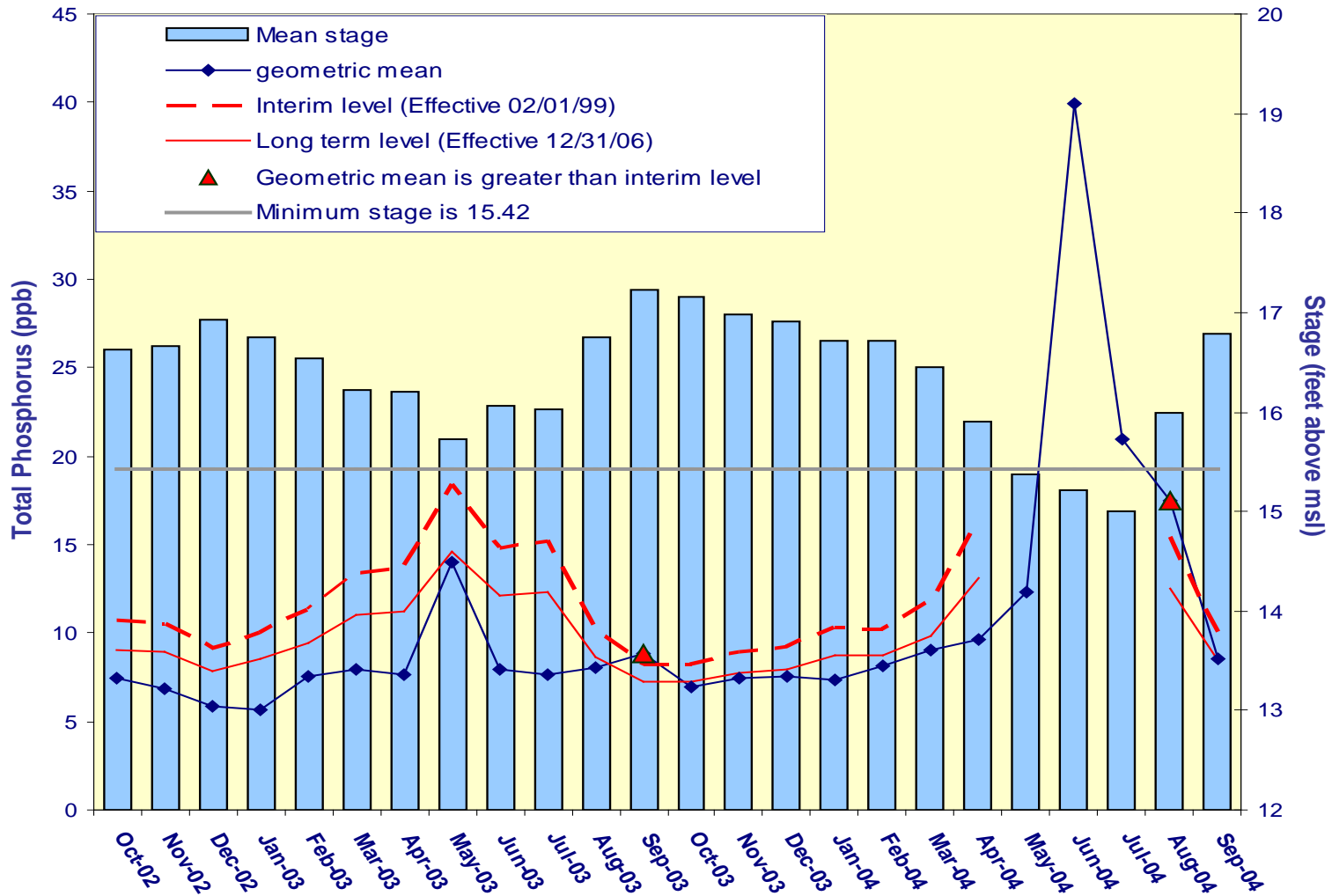


Settlement Agreement
July - September 2004 Report
Prepared for the
Technical Oversight Committee
February 24, 2005



A.R.M Loxahatchee National Wildlife Refuge Monthly Total Phosphorus Geometric Mean Concentrations



**Loxahatchee
National Wildlife
Refuge
Total Phosphorus
Compliance
Tracking**

Month - Year	Geometric Mean Concentration	Interim Level (ppb)	Long Term Level (ppb)	Average Stage	Number of TP Samples	Number of Stage Measurements
	(ppb)	Effective 2/1/99	Effective 12/31/06	(ft,NGVD)		
Oct-2002	7.5	10.7	9.0	16.64	12	3
Nov-2002	6.9	10.5	8.9	16.66	12	3
Dec-2002	5.9	9.2	7.9	16.93	14	3
Jan-2003	5.7	10.0	8.5	16.76	13	3
Feb-2003	7.5	11.3	9.5	16.54	11	3
Mar-2003	8.0	13.4	11.1	16.23	9	3
Apr-2003	7.6	13.7	11.2	16.20	12	3
May-2003	14.0	18.3	14.6	15.72	7	3
Jun-2003	7.9	14.8	12.1	16.06	11	3
Jul-2003	7.7	15.2	12.3	16.02	9	3
Aug-2003	8.0	10.1	8.6	16.74	14	3
Sep-2003	8.8	8.3	7.2	17.23	13	3
Oct-2003	7.0	8.3	7.2	17.15	14	3
Nov-2003	7.5	8.9	7.7	16.98	11	3
Dec-2003	7.6	9.3	8.0	16.91	14	3
Jan-2004	7.4	10.3	8.7	16.71	14	3
Feb-2004	8.2	10.3	8.7	16.71	14	3
Mar-2004	9.0	11.8	9.8	16.46	14	3
Apr-2004	9.6	16.3	13.1	15.91	9	3
May-2004	12.4	N/A	N/A	15.37	9	3
Jun-2004	40.0	N/A	N/A	15.22	2	3
Jul-2004	21.0	N/A	N/A	15.00	1	3
Aug-2004	17.5	15.4	12.5	16.00	12	3
Sep-2004	8.5	9.9	8.4	16.79	14	3

Refuge TP Compliance Tracking for July – December 2004

Month - Year	Geometric Mean Concentration	Interim Level (ppb)	Long Term Level (ppb)	Average Stage	Number of TP Samples	Number of Stage Measurements
	(ppb)	Effective 2/1/99	Effective 12/31/06	(ft,NGVD)		
Jul-2004	21.0	N/A	N/A	15.00	1	3
Aug-2004	17.5	15.4	12.5	16.00	12	3
Sep-2004	8.5	9.9	8.4	16.79	14	3
Oct-2004	8.9	10.0	8.5	16.76	13	3
Nov-2004	8.3	10.6	9.0	16.65	14	3
Dec-2004	10.4	12.1	10.1	16.41	13	3

Note: October through December 2004 values are preliminary data.
 Manual readings of staff gauge are used for September – November 2004 1-8C stage.

September 2004 Refuge Stages

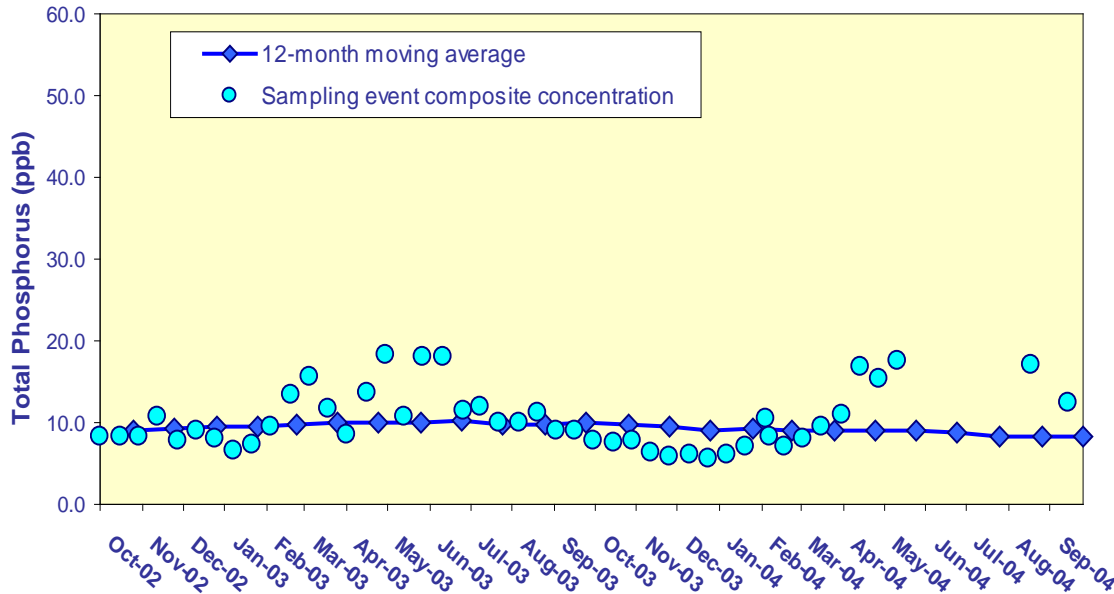
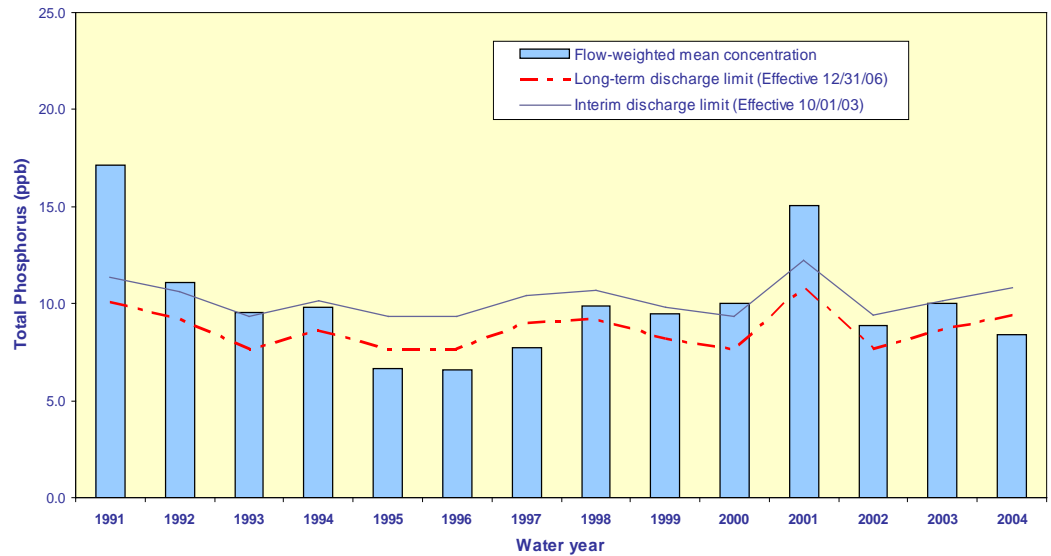
date	1-7	1-9	Substitute for 1-8C		
			1-8T	G94C Head	1-8C Staff Gauge
9/21/2004	16.99	16.53	16.61	16.62	16.75
9/23/2004	17.03	16.59	16.68	16.75	16.83

September 2004 Compliance Tracking

stages used	1-7 & 1-9	1-7 & 1-9 & 1-8T	1-7 & 1-9 & G94C_Head	1-7 & 1-9 & Staff Gauge
TP geomean	8.5			
interim limits	9.9	10.1	10.1	9.9
long term limits	8.4	8.6	8.6	8.4
average stages	16.79	16.74	16.75	16.79

Flow-weighted Mean Concentrations Inflows to Everglades National Park through Shark River Slough

12-month moving average at the end of each water year compared to the TP interim and long-term limits.



12-month moving average at the end of each month and the composite TP concentration for each sampling event.

Shark River Slough TP Concentration Compliance Tracking

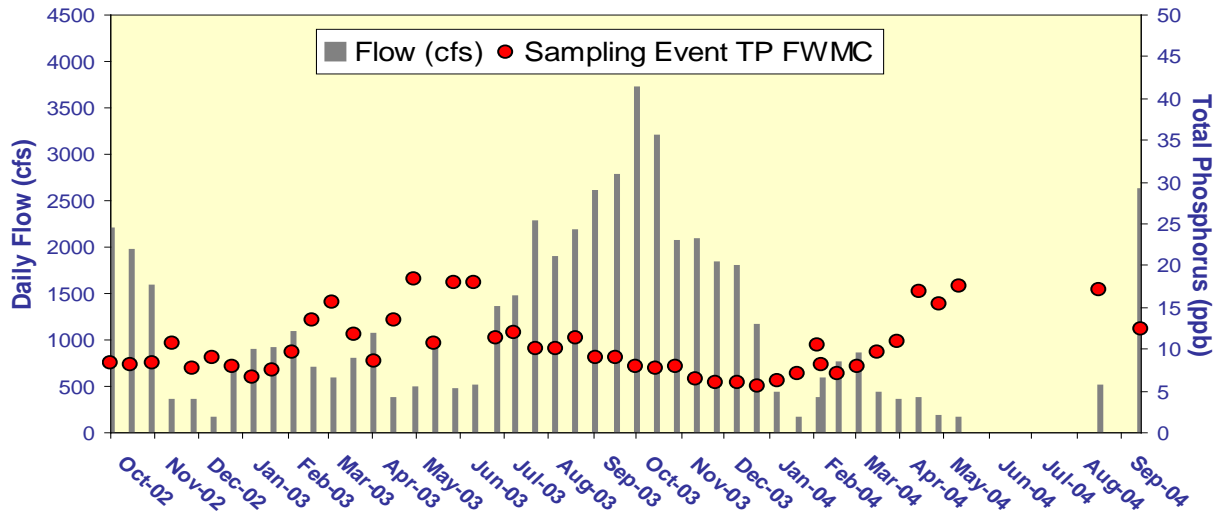
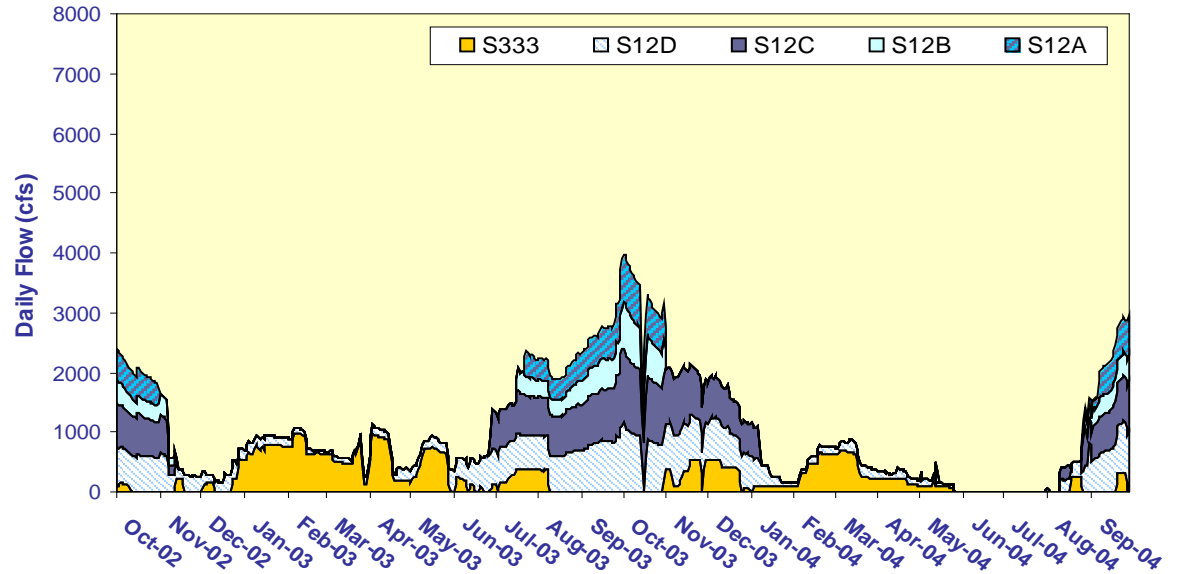
12-Month Period Ending On	Total Period Flow	Flow Weighted Mean Total Phosphorus	Interim Limit (ppb)	Long Term Limit (ppb)	Percent of Sampling Events Greater than 10 ppb	
			Effective	Effective	(%)	
	(Kac-ft)	(ppb)	10/1/2003	12/31/2006	Guideline	Observed
31-Oct-02	999.9	8.9	9.6	7.9	41.5	30.4
30-Nov-02	884.5	9.4	10.0	8.5	44.2	34.8
31-Dec-02	802.2	9.6	10.4	8.9	46.3	33.3
31-Jan-03	831.1	9.5	10.3	8.8	45.6	34.8
28-Feb-03	843.6	9.7	10.2	8.7	45.2	39.1
31-Mar-03	812.1	9.9	10.3	8.9	46.1	47.8
30-Apr-03	832.1	9.9	10.2	8.8	45.5	43.5
31-May-03	871.3	10.0	10.1	8.6	44.5	45.8
30-Jun-03	901.1	10.2	10.0	8.4	43.8	50.0
31-Jul-03	891.3	9.8	10.0	8.5	44.0	50.0
31-Aug-03	839.3	9.9	10.2	8.7	45.3	50.0
30-Sep-03	850.1	10.0	10.2	8.7	45.1	50.0
31-Oct-03	921.8	9.7	9.9	8.3	43.3	50.0
30-Nov-03	1001.5	9.5	9.6	7.9	41.4	46.2
31-Dec-03	1076.8	9.1	9.4	7.6	40.1	46.2
31-Jan-04	1049.0	9.2	9.4	7.7	40.4	46.2
29-Feb-04	1033.9	9.1	9.5	7.8	40.7	44.4
31-Mar-04	1036.7	8.9	9.4	7.7	40.7	37.0
30-Apr-04	1012.9	9.0	9.5	7.9	41.2	40.7
31-May-04	980.2	9.0	9.7	8.0	41.9	40.7
30-Jun-04	942.5	8.7	9.8	8.2	42.8	36.0
31-Jul-04	832.0	8.4	10.2	8.8	45.5	27.3
31-Aug-04	733.0	8.2	10.7	9.3	48.2	28.6
30-Sep-04	704.4	8.4	10.8	9.4	49.0	35.0

Shark River Slough TP Concentration Compliance Tracking for the Reporting Quarter (July – September 2004)

12-Month Period Ending On	Total Period Flow	Flow Weighted Mean Total Phosphorus	Interim Limit (ppb)	Long Term Limit (ppb)	Percent of Sampling Events Greater than 10 ppb	
			Effective	Effective	(%)	
	(Kac-ft)	(ppb)	10/1/2003	12/31/2006	Guideline	Observed
31-Jul-04	832.0	8.4	10.2	8.8	45.5	27.3
31-Aug-04	733.0	8.2	10.7	9.3	48.2	28.6
30-Sep-04	704.4	8.4	10.8	9.4	49.0	35.0

Shark River Slough – Daily Flows and Sampling Event FWMC

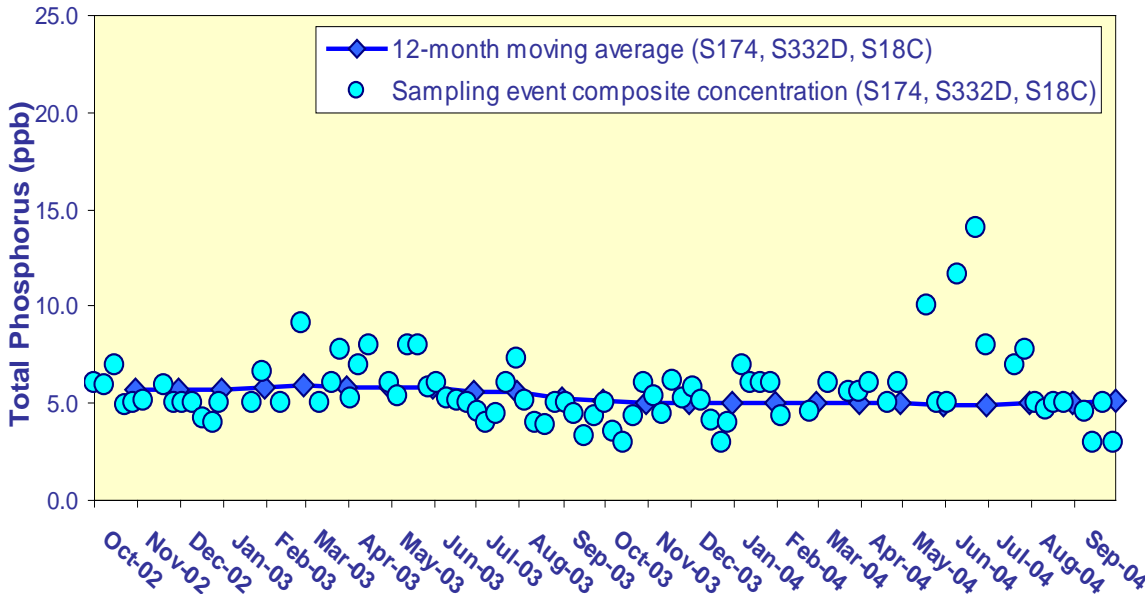
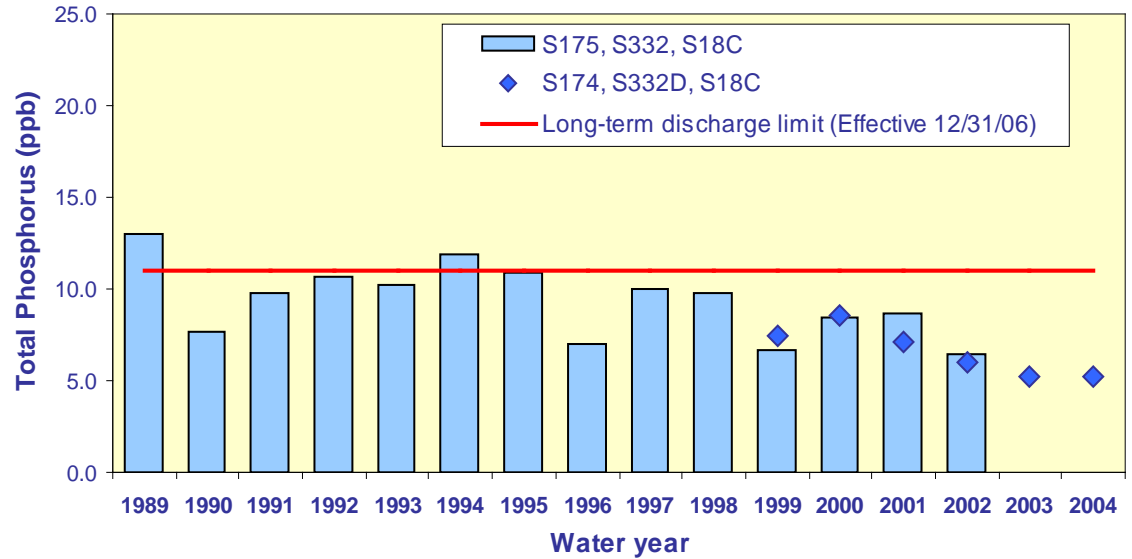
Daily flows into Shark River Slough by structure



Daily flow at Shark River Slough structures and the corresponding TP FWMCs for individual sampling events.

TP flow-weighted mean concentrations in inflows to the ENP through Taylor Slough and the Coastal Basins

The 12-month moving average FWMC at the end of each water year compared to the 11 ppb long-term total phosphorus limit.



The 12-month moving average FWMC at the end of each month and the composite TP concentration for each sampling event.

**Taylor Slough and the Coastal Basins
TP Concentration
Compliance Tracking**

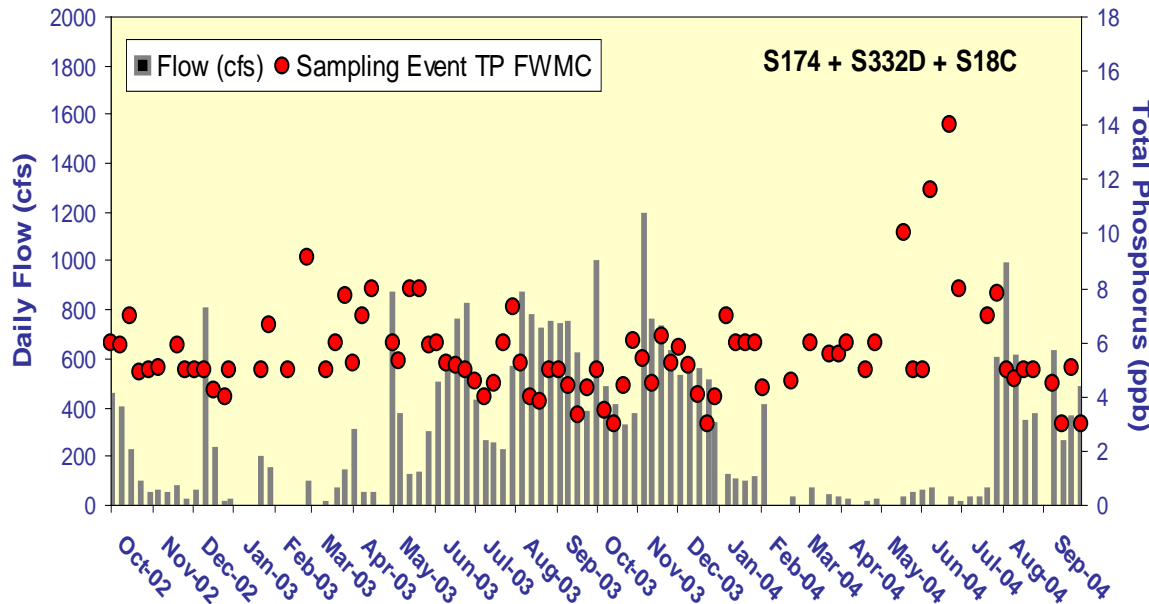
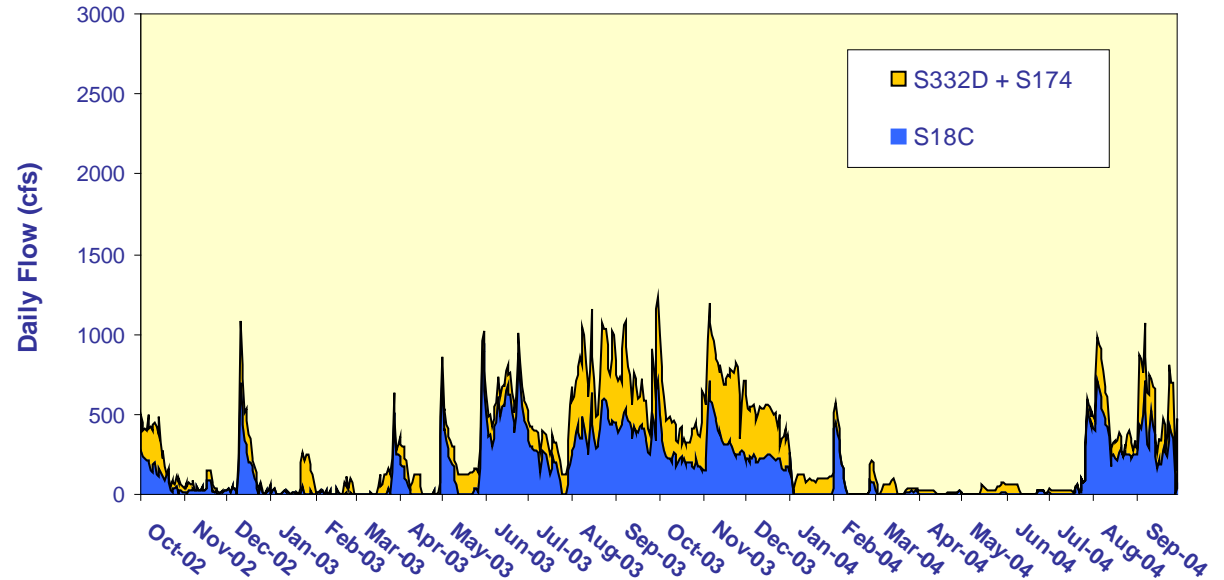
12-Month Period Ending On	Total Period Flow	Flow Weighted Mean Total Phosphorus	Limit (Effective 12/31/06)	Percent of Sampling Events Greater than 10 ppb	
			(ppb)	(%)	
	(Kac-ft)	(ppb)	Long Term	Guideline	Observed
31-Oct-02	316.0	5.7	11.0	53.1	4.5
30-Nov-02	271.6	5.8	11.0	53.1	4.8
31-Dec-02	249.8	5.7	11.0	53.1	4.7
31-Jan-03	234.2	5.8	11.0	53.1	5.0
28-Feb-03	229.9	5.9	11.0	53.1	5.0
31-Mar-03	230.5	5.9	11.0	53.1	4.9
30-Apr-03	231.5	5.8	11.0	53.1	4.8
31-May-03	244.2	5.8	11.0	53.1	0.0
30-Jun-03	249.8	5.6	11.0	53.1	0.0
31-Jul-03	209.0	5.6	11.0	53.1	0.0
31-Aug-03	216.1	5.3	11.0	53.1	0.0
30-Sep-03	221.9	5.2	11.0	53.1	0.0
31-Oct-03	233.8	5.0	11.0	53.1	0.0
30-Nov-03	276.6	5.1	11.0	53.1	0.0
31-Dec-03	293.9	5.0	11.0	53.1	0.0
31-Jan-04	295.9	5.1	11.0	53.1	0.0
29-Feb-04	301.4	5.0	11.0	53.1	0.0
31-Mar-04	297.9	5.0	11.0	53.1	0.0
30-Apr-04	292.3	5.0	11.0	53.1	0.0
31-May-04	274.8	4.9	11.0	53.1	2.2
30-Jun-04	238.0	4.9	11.0	53.1	6.7
31-Jul-04	224.3	5.0	11.0	53.1	11.4
31-Aug-04	202.7	5.1	11.0	53.1	11.4
30-Sep-04	192.6	5.2	11.0	53.1	11.4

Taylor Slough and the Coastal Basins TP Concentration Compliance Tracking For the Reporting Quarter (July – September 2004)

12-Month Period Ending On	Total Period Flow	Flow Weighted Mean Total Phosphorus	Limit (Effective 12/31/06)	Percent of Sampling Events Greater than 10 ppb	
			(ppb)	(%)	
	(Kac-ft)	(ppb)	Long Term	Guideline	Observed
31-Jul-04	224.3	5.0	11.0	53.1	11.4
31-Aug-04	202.7	5.1	11.0	53.1	11.4
30-Sep-04	192.6	5.2	11.0	53.1	11.4

Taylor Slough and S18C – Daily Flows and Sampling Event FWMC

Daily flows into Everglades National Park through Taylor Slough and S18C.



Daily flows at Taylor Slough structures and S18C and the corresponding TP for individual sampling events.